

THUNDERBALL — DENISON



Builder: DENISON

Year Built: 1988

Model: Motor Yacht

Price: PRICE ON APPLICATION

Location: Spain

LOA: 115' (35.05mm)

Beam: 21.33

Max Draft: 5' (1.52mm)

Cruise Speed: 27 Knots Kts. (31 MPH)

Max Speed: 38 Knots Kts. (44 MPH)

Our experienced yacht broker, Andrey Shestakov, will help you choose and buy a yacht that best suits your needs **THUNDERBALL — DENISON** from our catalogue. Presently, at **Shestakov Yacht Sales Inc.**, we have a wide variety of yachts available on our sale's list. We also work in close contact with all the big yacht manufacturers from all over the world.

If you would like to buy a yacht **THUNDERBALL — DENISON** or would like help answering any questions concerning purchasing, selling or chartering a yacht, please call **+1(954)274-4435**

TABLE OF CONTENTS

TABLE OF CONTENTS	2
SPECIFICATIONS	4
Overview	4
Basic Information	10
Dimensions	10
Speed, Capacities and Weight	11
Hull and Deck Information	11
Engine Information	11
PHOTOS	12
Full Beam Master Stateroom	16
Master Stateroom (Port Side)	16
VIP Stateroom (Forward)	16
Guest Stateroom	16
Guest Stateroom	16
Pilothouse	17
Engine Room	17
Layout	22
Line drawing 3 decks (1)	22
20140628_143628	22
20140628_145019	22
20140628_145045	23
P5050003	23
P5050004	23
P5050005	23
P5050007	23
P5050009	23
Passage Gibraltar 2018	24
PC170192	24

PC190222	24
PC190240	24
PC190241	24
CONTACTS	25
Contact details	25
Telephones	25
Office hours	25
Address	25

SPECIFICATIONS

Overview

BUY THIS LEGENDARY HIGH SPEED MTU-JET SUPERYACHT

AT JUST \$995,000: One of the fastest yachts in the world!

115' Denison 1988

The 'Legendry' THUNDERBALL.

"THUNDERBALL" set the benchmark of speed and innovative design among American Muscle boats.

Powered by 2 x MTU 16V-396-TB-94 Triple turbo engines delivering 3500HP each linked with ZF Gear boxes to ROLLS ROYCE KA-ME-WA Jet drives. She immediately set industry records for speed and endurance. She has proved herself as an exhilarating fast boat on the plane, achieving 50+ knots and a solid passage-maker in heavy seas when run for maximum cruising autonomy.

Originally, the ROLLS ROYCE propulsion and engine package alone was a \$2.4 million upgrade from the standard, which translates to a huge value/speed to a buyer in today's economy. Her shallow draft and vast salon space make her an ideal live aboard, Charter vessel or as originally conceived Fast Cruiser.

Commissioned from the renowned Denison Yard, Fort Lauderdale in 1987 by John Rosatti to successfully compete against his speed nemesis John Stallupi, still aficionados of fastcraft. She is still: **TheFastest Twin-Engine Motor Yacht over 100' built in the US in the 20th Century!** The innovative design concept has been mimicked by others but never bettered.

The current BritishOwner has had a long affinity for ROLLS ROYCE, which was his motivation to be part of the THUNDERBALL history. He has done the hardest work, which is bringing the powerful and innovative ROLLS ROYCE engineered MTU 396-TB-94 Series (3,500 HP x2) Diesels and the ROLLS ROYCE KA-ME-WA Jet Drives up to full working order and refining them for the modern cruising environment. She has recently had extensive engineering reports and assessments including a full sonic hull thickness testing following sand blast to bare metal below the waterline.

Thunderball has recently completed several extended offshore passages and has cruised the Mediterranean. The Owner has seen her potential achieving speeds approaching 40 knots. He and his wife have enjoyed spending summers on the "Costa Blanca" coastline and the beautiful "Balearic Islands", Spain.

The very attractive pricing allows the New Owner room to tackle the interior refit,

and tailor **The Fastest Twin-Engine Motor Yacht over 100' built in the US in the 20th Century** to their cruising needs.

I am privileged to be selected as the Exclusive Listing Agent for my favourite DENISON (Other than our family, of course!).

Location

Presently THUNDERBALL is berthed in Denia, Spain where I met the Owner and his Captain, John. (who also runs an experienced team of Refit Engineers, and would be keen to support the New Owner),

THUNDERBALL is ideally located either for transportation back to America or as a central base to explore the beautiful European, Mediterranean coastline. The Captain / Engineer has extensive knowledge of the boat, history, works completed and required to prepare THUNDERBALL for the approaching season.

Vessel

THUNDERBALL'S full beam interior provides vast interior accommodation on all 3 deck levels. Her style, lines and speed make her a stunning yacht. An exceptional 118' / 35mtr yacht.

Her full hull width accommodation achieves a vast **MAIN SALOON (32' / 10mtrs long x 21' / 6mtrs wide) and MASTER SUITE. Exceptionally large widow area gives unmatched space, views and light.**

All this translates to an ideal yacht for entertaining and exceptionally spacious living. During her successful years in BVI charter she frequently accommodated parties of 45 with a license to max 60 people.

Whether the boat is used as a Live Aboard, Meeting Venue, Charter Boat or for Family Holidays the space is unmatched on boats of this size.

Full Overview

Designer: J. Langlois

Builder: Denison

Engines: 2 x MTU 16V 396 TB94 Total 7000HP

Drives: 2 x Rolls Royce Ka-Me-Wa Water Jets

Fuel: Diesel

Cruising Speed: 27 knots

(Planes at 21Knots. Currently electronically restricted to 27Knots for maximum autonomy and engine longevity)

Max Speed: 50Knots

Dimensions

Length: 118' / 35Mtrs

Beam: 21.4' / 6.5Mtrs

Draft: 4.5' / 1.3Mtrs

Fuel Tanks: 5 total 10290 US Gal / 40,000Ltrs

Fresh Water: 2 total 1000 US Gal / 3900Ltrs

Holding: 1 total 220 US Gal / 850Ltrs

Launch Name: THUNDERBALL

Formerly known as: Texas Star Regazza

Engine & Drive

Twin diesel MTU 16V 396 TB94, 3480hp each, driving KaMeWa water jets, 71 series - W6 2002 - Last full Service 2018 by MTU Engineers.

Port: 6085 hrs Starboard: 7049 hrs

Both engines incorporate Hydraulic PTO"s via Centaflex couplings.

Rolls Royce Ka-Me-Wa Joy stick controls for water jets port & stbd.

Lower helm / Pilot house

Fly Bridge central console

Port wing controls

Starboard wing controls

MTU Engine gauges exhaust, gas, temp and A & B

MTU Deuta tachometers

MTU Alarm indicator lights

Trim tabs controls

Hydraulic controls for windlass and bow thruster at all stations

ZF gears model BW755 – serviced 2018

Raycor fuel filters - main engines and generators

Main engine exhaust and jackets new 2006

Fuel consumption: 280 gallons per hour at 36 knots, 65 gallons per hour at 13 knots

Electronics & Navigational Equipment

Full electronics refit 2013,

by Telmar Yachting, Fort Lauderdale (70,000\$ upgrade)

SIMRAD 19" NSO colour MFD x 3 (2013)

SIMRAD NSO Controllers and computers x 2 (2013)

SIMRAD AP50 Auto Pilot (2013) (requires calibration to compass)

SIMRAD TX06S 6kw 4' Oped array RAYDAR (2013)

SIMRAD TX10S 10Kw 5' Open array RAYDAR (2013)

SIMRAD MX535 AIS Transponder (2013)

Raytheon GYRO COMPASS Standard 20 (requires calibration to autopilot)

ICOM M 604A VHF x 2

ICOM SSB M804

ICOM hand held VHF x 8

FLIR forward night vision (2013)

Thrane and Thrane Sailor Sat Phone (Out of contract)

Rear Deck camera

Mechanical Equipment

Primary Hydraulic pump driven from Port generator via Clutch

AUXILIARY electric Hydraulic pump

2 x Maxwell Hydraulic Capstan winches rear deck

Maxwell 5000 Hydraulic Capstan and dual anchor windlass on forward deck

NavCon hydraulic trim tabs (Functioning but require position sensors)

Bespoke 40HP Hydraulic Bow thruster

2 x Variable Speed Engine room blowers (Stb untested and missing Baldor control)

2 x Oversized 300lb PLOW anchors w/200ft of chain

Stern Passerelle & boarding ladder- Manually operated

Marquipt sea stairs - port & starboard - Oversized

Marquipt sea crane for small boats - 2 Tons

Bollard cleats fore and aft

Stainless Steel swim ladder

2 x Cruisair chilled water air conditioning system. (Untested)

Air condenser units in all areas and ER

Installed new 1997 upgrades 2007 Rebuilt 2012 (Unchecked)

Village Marine Tech Water maker 800 GPD x 2

New 2007 Rebuilt 2012 Last operated 2016. Stored with Chemical preservative

Primary and secondary fresh water filters.

Microphor Heads and sewage system to Black tank.

6 x 12V Automatic bilge pumps located throughout the vessel

2 x 110V Electric bilge pumps which can draw from six locations (up to 100 GPM)

Electrical System

Shore Power Hook UP

Isolation transformers New 2016

Intelligent voltage activated TAP control New 2016 (requires 2 relays)

2 x Northern Lights 60Kva Generators

Both Generators Fully serviced June 2017

Starboard Genrator fully rebuilt 2016

Exhaust modified and rebuilt 2017

Port generator drives a clutchable Hydraulic PTO

1 x 12 Volt Mastervolt battery charger / Inverter 3000w

1 x 24 Volt Mastervolt battery charger

3 x 24V batteries banks, one for each engine, one for KaMeWa jets

2 x 12V battery bank for ship's service and generators (selectable)

2 x 12V bank of batteries for electronics (Dog House)

2 x Pro-Mariner battery chargers supporting electronics

Watersports

2 x 2007 Yamaha VX deluxe 3-person waverunners.

Safety

Fire extinguishers located throughout vessel (Test due June 2019)

Full Coast Guard safety equipment and life jackets

EPIRB (Unregistered)

Bell

Boat Hook

2 x 8 Person Avon liferaft (Test Due Sept 2016)

Orion Flairs (Unchecked)

Remarks

One of the most outstanding values in a high speed, quality built, proven integrity motor yacht. Ready for immediate cruising and/or redecorating to your personal taste and function. No other yacht can do what this yacht can do or can go where this yacht can go in this price range. Because of the waterjets, you can even beach her for a picnic on a calm day. Dreams can come true at half the price of a lower performing competition. Call for an appointment today.

Exclusions

Owners personal items and tools.

Disclaimer

The Company offers the details of this vessel in good faith but cannot guarantee or

warrant the accuracy of this information nor warrant the condition of the vessel. A buyer should instruct his agents, or his surveyors, to investigate such details as the buyer desires validated. This vessel is offered subject to prior sale, price change, or withdrawal without notice.

General Description

THUNDERBALL is a 115 Denison 1988 yacht located in the waters of PORT DENIA, Spain. She is powered by 2 x MTU 396 16V and Ka-Me-Wa Water Jets delivering 7000hp. Her shallow draught, speed and vast accommodation space give unprecedented flexibility of use.

Both engines running, serviced by MTU engineers, tested with reports available and ready to travel.

New HEMPLE bottom paint from bare aluminium with surveyor reports and A+ Rating. Audio-Gauged and endorsed 2017 at Varadero Port Denia.

She is ready for her new owners.

Basic Information

Category: Motor Yacht

Sub Category: Mega Yacht

Model Year: 1988

Year Built: 1988

Country: Spain

Dimensions

LOA: 115' (35.05mm)

Beam: 21.33

Max Draft: 5' (1.52mm)

Speed, Capacities and Weight

Cruise Speed: 27 Knots Kts. (31 MPH) **Max Speed:** 38 Knots Kts. (44 MPH)

Water Capacity: 1000 Gallons

Holding Tank: 220 Gal Gallons

Fuel Capacity: 10290 Gal Gallons

Hull and Deck Information

Hull Material: Aluminum

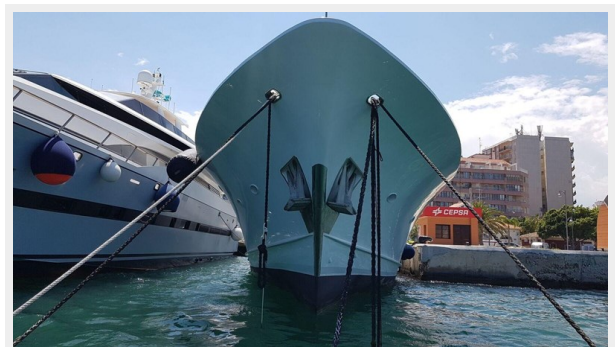
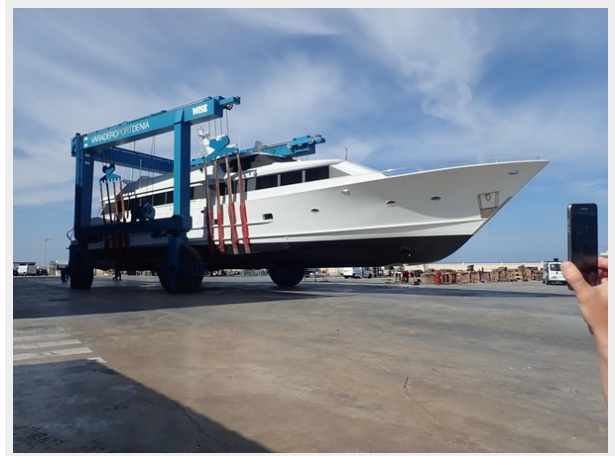
Engine Information

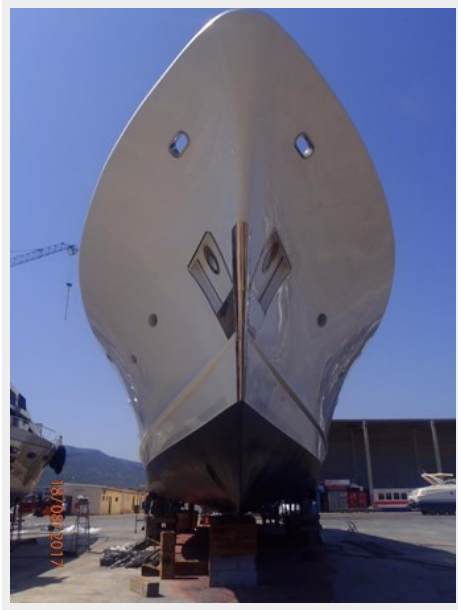
Engines: 2

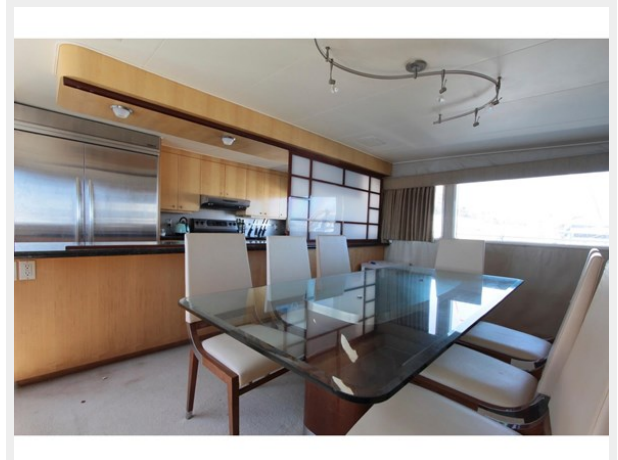
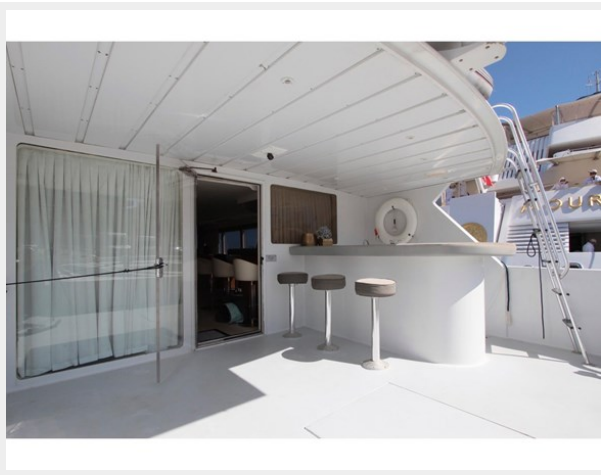
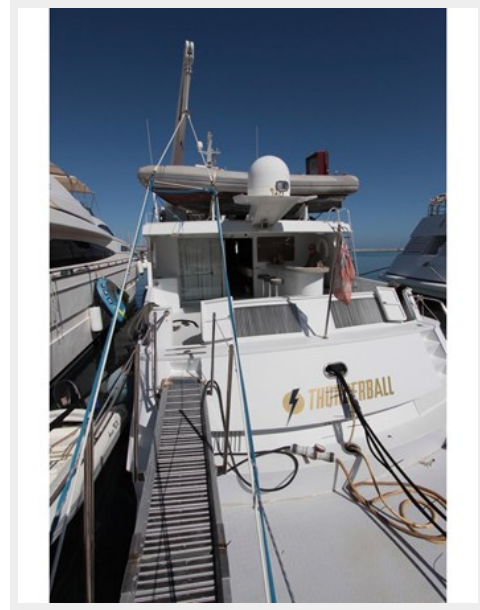
Manufacturer: MTU

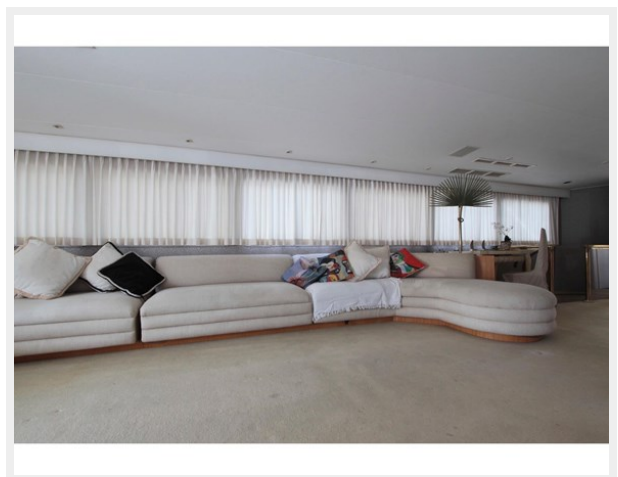
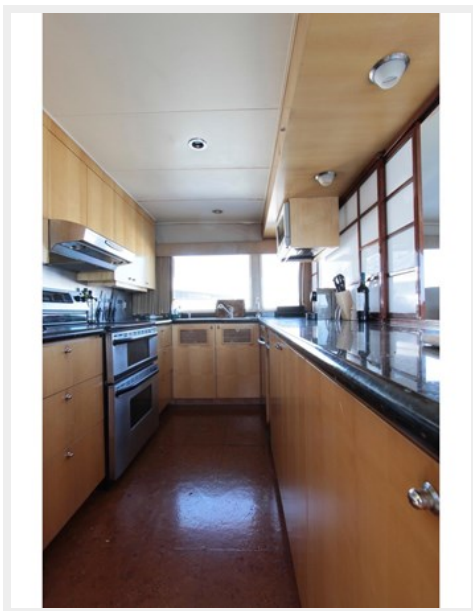
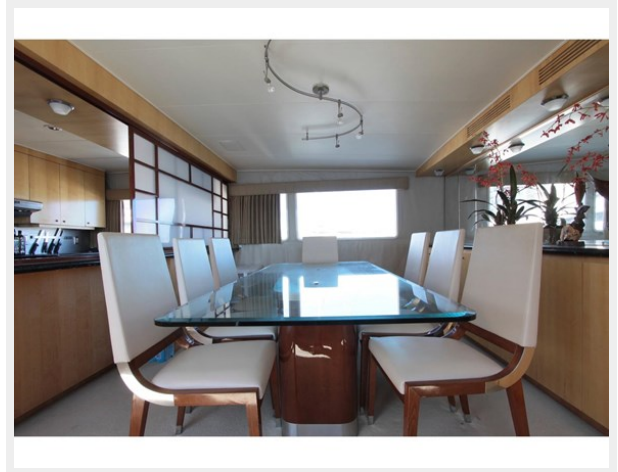
Fuel Type: Diesel

PHOTOS

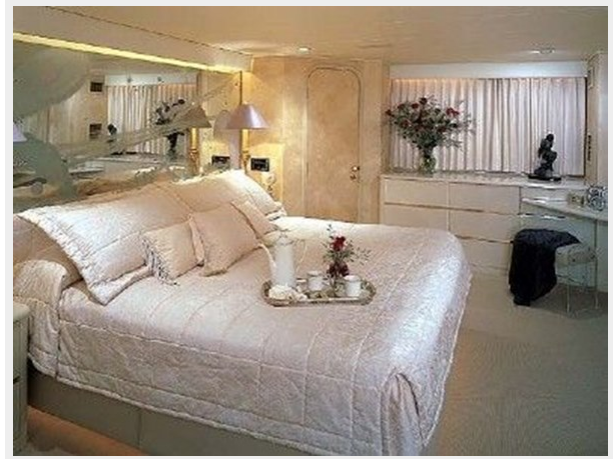








Full Beam Master Stateroom



Master Stateroom (Port Side)



VIP Stateroom (Forward)

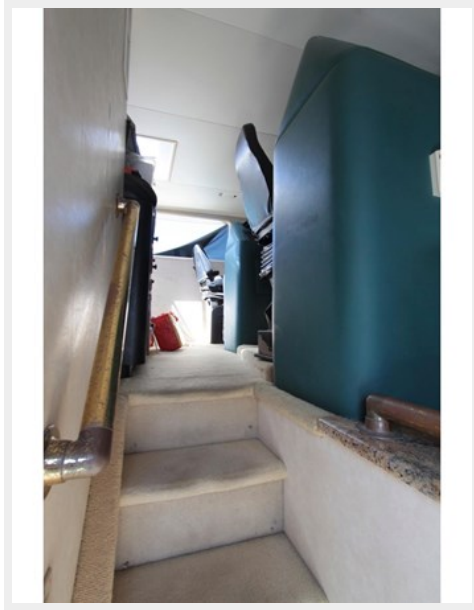


Guest Stateroom

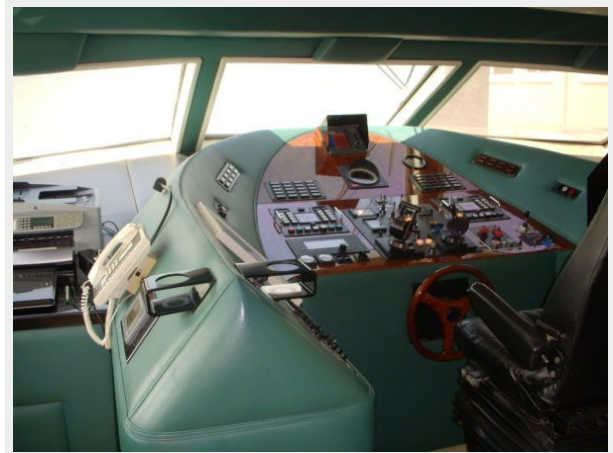


Guest Stateroom

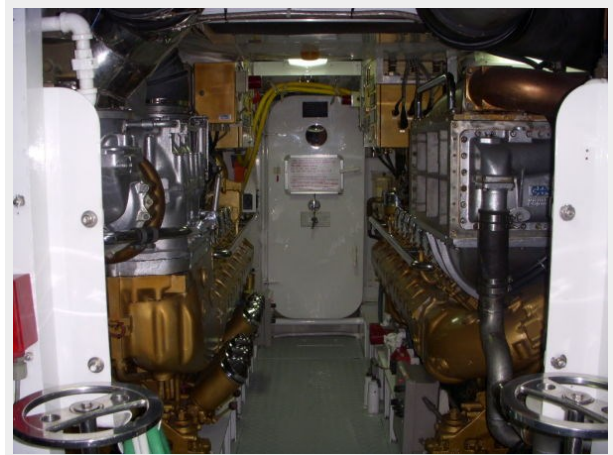


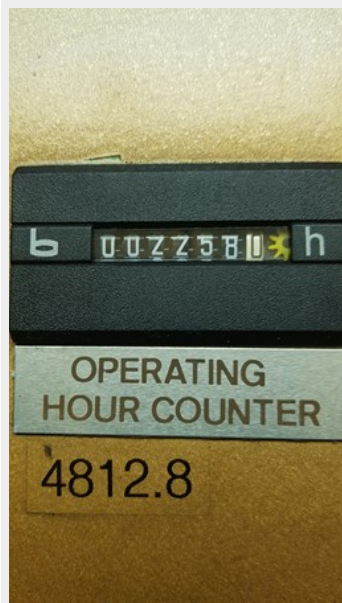


Pilothouse

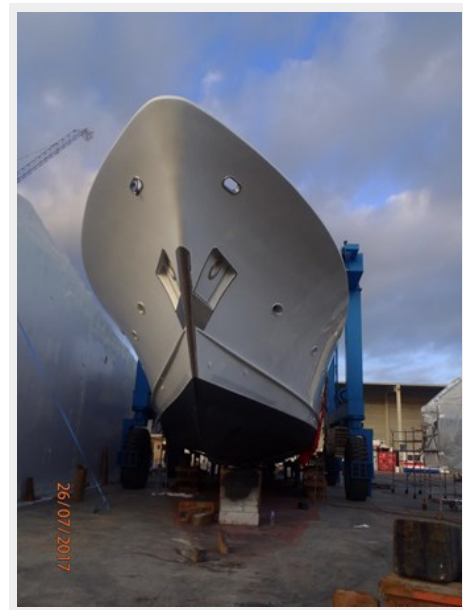


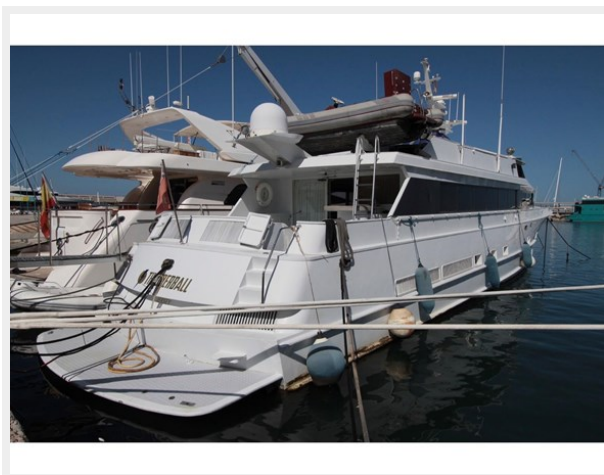
Engine Room

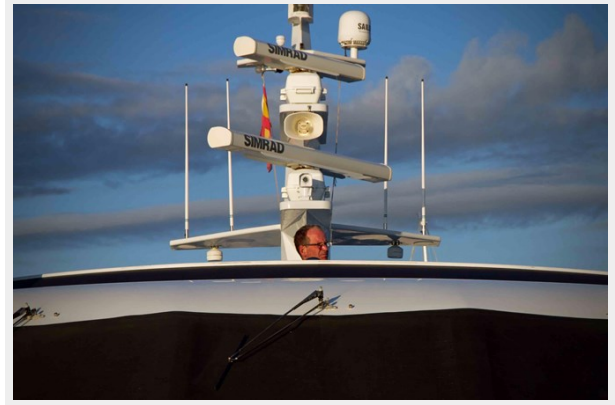




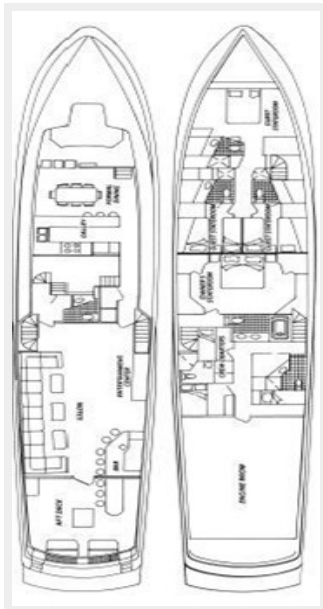




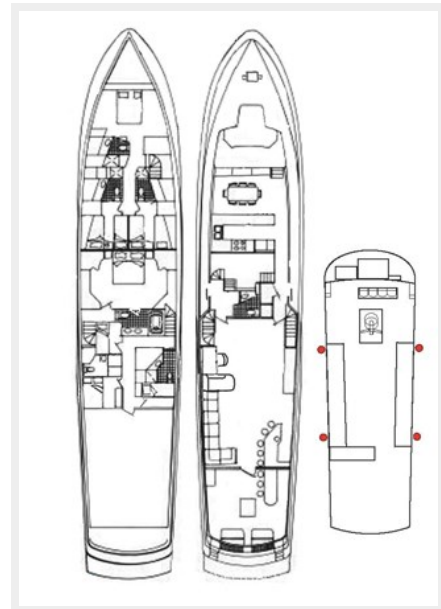




Layout



Line drawing 3 decks (1)

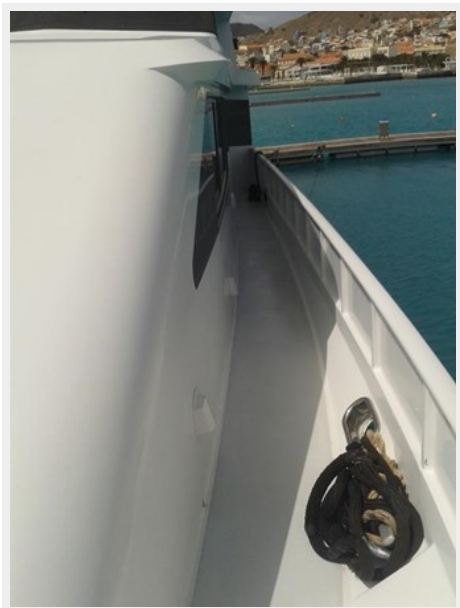


20140628_143628

20140628_145019



20140628_145045



P5050003



P5050004



P5050005



P5050007



P5050009



Passage Gibraltar 2018



PC170192



PC190222



PC190240



PC190241



CONTACTS

Andrey Shestakov, leading yacht broker of the sales department of Shestakov Yacht Sales Inc. Shestakov Yacht Sales Inc., the official representative of the Miami/Fort Lauderdale FL headquarters.

Contact details

Email: **andrey@shestakovyachtsales.com**

Web: shestakovyachtsales.com/en/

Telephones

USA: **+1(954)274-4435**

Office hours

Monday – Saturday: **9:00 - 21:00** EDT

Sunday: **closed**

Address



Harbour Towne Marina, 850 NE 3rd St, STE 213, Dania, FL 33004