

AZIMUT 60 — AZIMUT



Builder: [AZIMUT](#)

Year Built: 2013

Model: Motor Yacht

Price: PRICE ON APPLICATION

Location: Hong Kong

LOA: 60' 6" (18.44m)

Beam: 16' 0" (4.88m)

Min Draft: 4' 6" (1.37m)

Max Draft: 3' 0" (0.91m)

Cruise Speed: 23 Kts. (26 MPH)

Max Speed: 28 Kts. (32 MPH)

Our experienced yacht broker, Andrey Shestakov, will help you choose and buy a yacht that best suits your needs **Azimut 60 — AZIMUT** from our catalogue. Presently, at Shestakov Yacht Sales Inc., we have a wide variety of yachts available on our sale's list. We also work in close contact with all the big yacht manufacturers from all over the world.

If you would like to buy a yacht **Azimut 60 — AZIMUT** or would like help answering any questions concerning purchasing, selling or chartering a yacht, please call **+1(954)274-4435**

TABLE OF CONTENTS

TABLE OF CONTENTS	2
SPECIFICATIONS	4
Overview	4
Basic Information	4
Dimensions	4
Speed, Capacities and Weight	5
Accommodations	5
Hull and Deck Information	5
Engine Information	5
PHOTOS	6
Saloon	6
Main Deck Helm	6
Galley	6
Master Suite	7
Master Seatee	7
Master Ensuite Head	7
Master Ensuite Shower	7
VIP Foreward Suite	8
Guest Cabin	8
Guest Hallway	8
Engine Room	8
Seakeeper Gyro	8
Port Engine	9
Stbd Engine	9
azimut60_fly	12
azimut60_main	13
azimut60_lower	13
CONTACTS	14

Contact details	14
Telephones	14
Office hours	14
Address	14

SPECIFICATIONS

Overview

Accommodation for 6 guests in 3 cabins. Owners cabin at mid-ship with a double bed and ensuite bathroom, VIP cabins with twin bed in bow and guest cabin. A large well equipped galley, spacious saloon with sofas and separate dining area. Nice size cockpit. The fly bridge helm position, includes seating and sun beds with table and wet bar. The Azimut 60 is a practical, spacious family yacht with impressive cruising speeds and a good range. The large cockpit and saloon are matched by a flybridge with plenty of seating, which can easily convert to a panoramic sun lounging area. The light and airy interior makes for comfortable time at sea and in port.

Twin MAN R6 800hp (599hr)

Single Kohler 20kw gen set (1,580hr)

Seakeeper Gyro stabilizer

Last haul out May 2020

Basic Information

Category: Motor Yacht

Model Year: 2013

Year Built: 2013

Country: Hong Kong

Vessel Top: Hardtop

Fly Bridge: Yes

Cockpit: Yes

Dimensions

LOA: 60' 6" (18.44m)

Beam: 16' 0" (4.88m)

Min Draft: 4' 6" (1.37m)

Max Draft: 3' 0" (0.91m)

Speed, Capacities and Weight

Cruise Speed: 23 Kts. (26 MPH)

Max Speed: 28 Kts. (32 MPH)

Water Capacity: 166.42839276 Gallons

Fuel Capacity: 739.6817456 Gallons

Accommodations

Total Cabins: 3

Total Berths: 6

Sleeps: 6

Total Heads: 3

Crew Cabin: 1

Crew Berths: 1

Crew Sleeps: 1

Hull and Deck Information

Hull Material: GRP

Deck Material: Teak over Fiberglass

Hull Configuration: Modified V-Hull

Hull Color: white

Hull Finish: Stainless Steel

Engine Information

Engines: 2

Manufacturer: MAN

Model: D2876LE423

Engine Type: Inboard

Fuel Type: Diesel

PHOTOS

Saloon



Main Deck Helm



Galley





Master Suite



Master Seatee



Master Ensuite Head



Master Ensuite Shower



VIP Foreward Suite



Guest Cabin



Guest Hallway



Engine Room



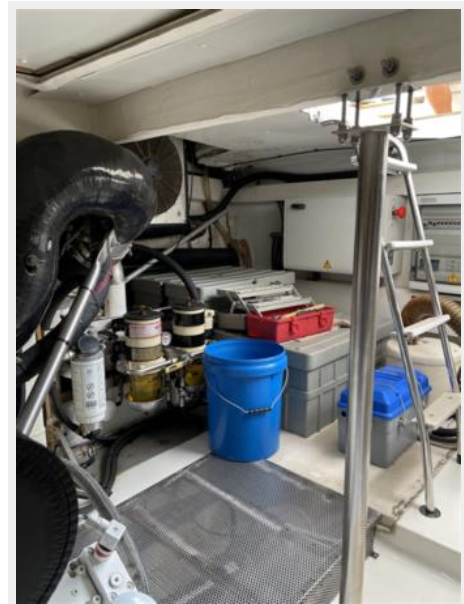
Seakeeper Gyro

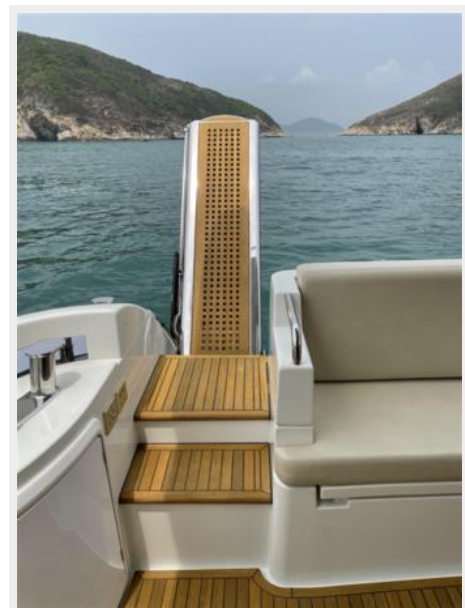


Port Engine



Stbd Engine

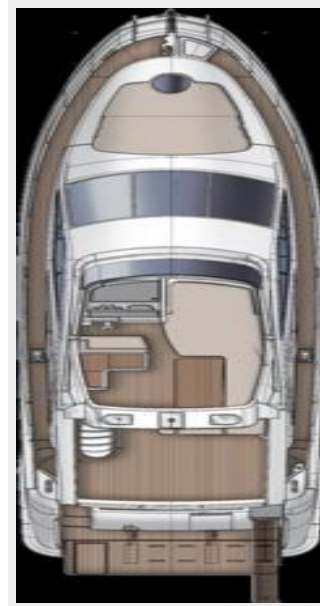








azimut60_fly



azimut60_main



azimut60_lower



CONTACTS

Andrey Shestakov, leading yacht broker of the sales department of Shestakov Yacht Sales Inc. Shestakov Yacht Sales Inc., the official representative of the Miami/Fort Lauderdale FL headquarters.

Contact details

Email: andrey@shestakovyachtsales.com

Web: shestakovyachtsales.com/en/

Telephones

USA: +1(954)274-4435

Office hours

Monday – Saturday: **9:00 - 21:00** EDT

Sunday: **closed**

Address



Harbour Towne Marina, 850 NE 3rd St,
STE 213, Dania, FL 33004