

ABSOLUT — SILVERTON



Builder: SILVERTON

Year Built: 2007

Model: SHELBY

Price: PRICE ON APPLICATION

Location: United States

LOA: 35' 0" (10.67m)

Beam: 13' 4" (4.06m)

Min Draft: 2' 11" (0.89m)

Max Draft: 2' 11" (0.89m)

Cruise Speed: 18 Kts. (21 MPH)

Max Speed: 27 Kts. (31 MPH)

Our experienced yacht broker, Andrey Shestakov, will help you choose and buy a yacht that best suits your needs **Absolut — SILVERTON** from our catalogue. Presently, at Shestakov Yacht Sales Inc., we have a wide variety of yachts available on our sale's list. We also work in close contact with all the big yacht manufacturers from all over the world.

If you would like to buy a yacht **Absolut — SILVERTON** or would like help answering any questions concerning purchasing, selling or chartering a yacht, please call **+1(954)274-4435**

TABLE OF CONTENTS

TABLE OF CONTENTS	2
SPECIFICATIONS	4
Overview	4
Basic Information	4
Dimensions	4
Speed, Capacities and Weight	4
Accommodations	5
Hull and Deck Information	5
Engine Information	5
DETAILED INFORMATION	6
Main Description	6
360 PICTURES	6
MANUFACTURER DESCRIPTION	6
DECK FEATURES	6
INTERIOR AMENITIES	7
Safety Equipment	7
ADDITION EQUIPMENT	7
Mechanical	7
Electrical Equipment	7
Galley	8
Heads	8
Disclaimer	8
Exclusions	8
Disclaimer	8
PHOTOS	9
3 2007 Silverton 35MY Aft Port Profile	9
2 2007 Silverton 35MY Aft Starboard Profile	9
5 2007 Silverton 35MY aft view	10

7 2007 Silverton 35MY Radar Arch	10
CONTACTS	18
Contact details	18
Telephones	18
Office hours	18
Address	18

SPECIFICATIONS

Overview

This FRESH WATER beauty has been professionally maintained since day 1, operated by a USCG/homeland security professional, and is ready for you to call her yours. Silverton is known for optimizing the interior space by creating a full beam salon with the walk over vs the walk around side decks. Her 6 foot 4 inches of headroom allow ample clearance, her molded fiberglass stairs make for ease of entry, and her sleek looks will make her the envy of the dock. Bottom Paint and Anodes done in 2014 Routine Engine and Generator Maintenance done April 2019 New Refrigerator/Freezer in 2017 New Canvas / Strataglass in 2014

Basic Information

Category: SHELBY

Sub Category: Aft Cabin

Model Year: 2007

Year Built: 2007

Country: United States

Dimensions

LOA: 35' 0" (10.67m)

Beam: 13' 4" (4.06m)

Min Draft: 2' 11" (0.89m)

Max Draft: 2' 11" (0.89m)

Clearance: 16' 0" (4.88m)

Speed, Capacities and Weight

Cruise Speed: 18 Kts. (21 MPH)

Max Speed: 27 Kts. (31 MPH)

Water Capacity: 94 Gallons

Holding Tank: 55 Gallons

Fuel Capacity: 286 Gallons

Accommodations

Total Cabins: 2

Total Berths: 2

Total Heads: 2

Hull and Deck Information

Hull Material: Fiberglass

Engine Information

Engines: 2

Manufacturer: Crusader

Model: 8.1 L

Engine Type: Inboard

Fuel Type: Gas/Petrol

DETAILED INFORMATION

Main Description

This FRESH WATER beauty has been professionally maintained since day 1, operated by a USCG/homeland security professional, and is ready for you to call her yours. Silverton is known for optimizing the interior space by creating a full beam salon with the walk over vs the walk around side decks. Her 6 foot 4 inches of headroom allow ample clearance, her molded fiberglass stairs make for ease of entry, and her sleek looks will make her the envy of the dock. Bottom Paint and Anodes done in 2014 Routine Engine and Generator Maintenance done April 2019 New Refrigerator/Freezer in 2017 New Canvas / Strataglass in 2014

360 PICTURES

Copy and Paste the link into your browser to view 360 degree views of each listed space. Generator Compartment - Engine Compartment - Aft Head - Aft Cabin - Salon 1 - Fwd Head - Fwd Cabin 1 - Fwd Cabin 2 -

MANUFACTURER DESCRIPTION

With her streamlined international flair, few boats of this class look as fast as our 35 Motor Yacht. And with a pair of 8.1-L Crusader engines driving her, that racy style is not deceiving. The interior design of the 35 Motor Yacht is equally accomplished. The large main cabin integrates the amenities of a salon, dinette, and generously equipped galley into one fluent space. Satin cherry hardwoods are reflected in horizontal surfaces, cabinetry, doors, and bulkheads. A split-stateroom plan ensures privacy. Both handsomely appointed staterooms onboard the 35 Motor Yacht feature a large double-berth and hanging locker. The master has an en-suite head with stall shower; a second head with split shower serves the guest stateroom and also a day head. The 35 Motor Yacht salon ultraleather sofa converts to a double-bed supplementing the stateroom's accommodations. The bridge of the 35 Motor Yacht offers an unobstructed view of pleasures ahead while Silverton's innovative SideWalk permits safe passage to the foredeck. The sheltered aft deck satisfies those who prefer to entertain out of reach of unfavorable weather.

DECK FEATURES

AM/FM Single CD Stereo/iPod - Flybridge Aft Deck Hardtop Aft Deck Weather Boards Anchor Roller w/Flange Bow Pulpit 1? Bow Rails 316L Stainless Steel Hardware Dockside Water Connection Electrical Storage Locker in Transom Flybridge Handrails - Stainless Steel Flybridge Storage in Seating Frameless Opening windows Molded-In Diamond Non-Skid Mooring, Quarter, & Spring Cleats SideWalk Molded Steps to Bridge Stainless Steel Steering

Wheel Swim Platform w/Ladder Tempered Safety Glass Transom Shower Transom Storage Wet Bar

INTERIOR AMENITIES

AM/FM Single CD Stereo - Salon Certified Marine Sanitation System Convertible Sofa Custom Blinds Designer Draperies Designer Bedspreads Designer Accent Pillows Entertainment Center Furniture Grade Cherry Cabinetry High Gloss Horizontal Cabinet Surfaces Innerspring Mattresses Overhead Hatches w/ Screens 100% Nylon Scotchgard Protected Carpeting Solid Cherry Passageway Doors, Cabinet and Drawer Face Frames Telephone/Cable TV hook ups 3 Hanging Lockers Window Screens

Safety Equipment

Anchor and Rode Anti-Fouling Bottom Paint Ball Valves on Underwater Thru-hulls Battery Safety Switches Battery Safety Trays Boat Hook Bonding System Carbon Monoxide Detectors Compass Dock Lines Dual Horns Engine Alarms Fenders w/Line USCG approved Fire Extinguishers USCG approved Fire Suppression System Flare Kit Floatation Devices Fog Bell Gasoline Fume/High Water Detector Life Vests Parallel Start Switch

ADDITION EQUIPMENT

3 Zone Air Conditioning Anchor Windlass w/ Chain Bow Thruster CD Player - Flybridge and Salon Aft Deck Strataglass. Enclosure Fly Bridge Strataglass Enclosure Raymarine E80 Chartplotter Raymarine Radar w/Color overlay to chartplotter Raymarine 215 DSC/VHF radio Exterior Carpet Generator 7.3 ECD Gas w/ Sound Shield Ice maker Interior Lighting w/Remote Internal Sea Strainers Par Quiet Flush Heds Radar Arch Remote Spotlight 23" Flat Panel HDTV w DVD Ultraleather Sofa and Dinette Fresh Water Washdown Bow and Transom

Mechanical

Acoustic and Thermal insulation Dripless Shaft Seals Dual Lever Throttle and Transmission Controls Engine Hour meter Engine Room Lighting Fresh Water Cooling Electric Fuel Gauge Flexible USCG Type 1 Fuel lines Aluminum Fuel Tanks 2/ Baffles Fuel/Water Separators Holding Tank w/Dockside and Overboard Discharge Hydraulic Steering Macerated Pump Manganese Bronze Rudders Manganese Bronze Struts Pressurized Water System Automatic Shower Sump Pump Stainless Steel Prop Shafts Trim Tabs Underwater Exhaust Vinylester Barrier Coat Water/Holding Tank Monitors

Electrical Equipment

AC/DC Converter Accessory Wiring on Bridge Deep Cycle Marine Batteries 12v and 120v Circuit Breakers Color Coded 12v Harnessed Wiring System 30amp Shore Power Connection w/Cord GFCI System Gloomed TV/FM antenna 12v interior and Courtesy Lighting COLREGS Navigaiton Lights Polarity Indicators High Quality Tinned Stranded Copper Wiring

Galley

Amtico Flooring Corian Countertops Microwave/Convection Oven 2 Burner Electric Range AC/DC Refrigerator/Freezer

Heads

Corian Countertops Designer Faucets Electric Heads Enclosed Stall Showers Exhaust Fans Medicine Cabinet GFCI Outlet

Disclaimer

The Company offers the details of this vessel in good faith but cannot guarantee or warrant the accuracy of this information nor warrant the condition of the vessel. A buyer should instruct his agents, or his surveyors, to investigate such details as the buyer desires validated. This vessel is offered subject to prior sale, price change, or withdrawal without notice.

Exclusions

Owner's personal belongings.

Disclaimer

The Company offers the details of this vessel or yacht in good faith but cannot guarantee or warrant the accuracy of this information nor warrant the condition of the vessel. A buyer should instruct his representatives, agents, or his surveyors, to investigate such details as the buyer desires validated. This vessel or yacht is offered subject to prior sale, price change, or withdrawal without notice.

PHOTOS



3 2007 Silverton 35MY Aft Port Profile



2 2007 Silverton 35MY Aft Starboard Profile



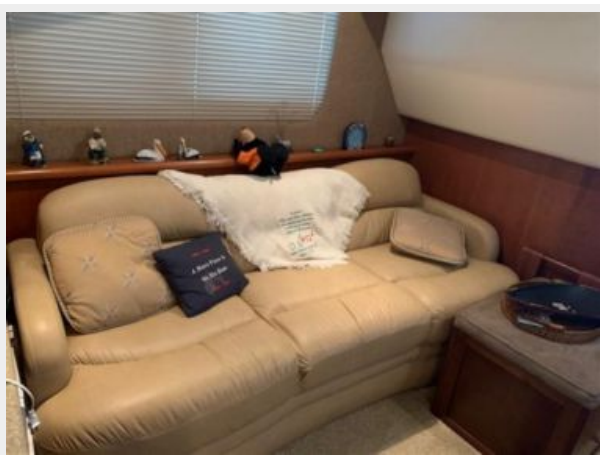
5 2007 Silverton 35MY aft view



7 2007 Silverton 35MY Radar Arch





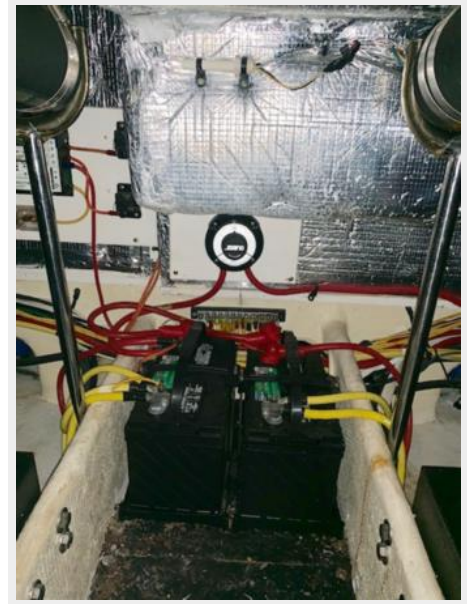












CONTACTS

Andrey Shestakov, leading yacht broker of the sales department of Shestakov Yacht Sales Inc. Shestakov Yacht Sales Inc., the official representative of the Miami/Fort Lauderdale FL headquarters.

Contact details

Email: **andrey@shestakovyachtsales.com**

Web: shestakovyachtsales.com/en/

Telephones

USA: +1(954)274-4435

Office hours

Monday – Saturday: **9:00 - 21:00** EDT

Sunday: **closed**

Address



Harbour Towne Marina, 850 NE 3rd St,
STE 213, Dania, FL 33004