

## ABSOLUT — SILVERTON



**Судостроитель:** SILVERTON

**Год постройки:** 2007

**Модель:** SHELBY

**Цена:** ЦЕНА ЯХТЫ ПО ЗАПРОСУ

**Местонахождение:** United States

**Длина общая:** 35' 0" (10.67m)

**Ширина:** 13' 4" (4.06m)

**Мин. осадка:** 2' 11" (0.89m)

**Макс. осадка:** 2' 11" (0.89m)

**Крейс. скорость:** 18 Kts. (21 MPH)

**Макс. скорость:** 27 Kts. (31 MPH)

Купить **Absolut — SILVERTON** а также выбрать подходящую вам яхту из нашего каталога яхт вам поможет опытный яхтенный брокер Андрей Шестаков. На сегодняшний день компания **Shestakov Yacht Sales Inc.** имеет большое количество яхт в собственном списке продаж, а также тесно сотрудничает со всеми крупными яхтенными производителями по всему миру.

Для того чтобы купить яхту **Absolut — SILVERTON** а также проконсультироваться по любому вопросу связанному с покупкой, продажей, чартером яхт позвоните по телефону **+7(918)465-66-44**.

# ОГЛАВЛЕНИЕ

ОГЛАВЛЕНИЕ	2
ХАРАКТЕРИСТИКИ	4
Обзор	4
Основная информация	4
Размеры	4
Скорость, вместимость и масса	4
Размещение	5
Корпус и палуба	5
Информация о двигателе	5
ПОДРОБНОЕ ОПИСАНИЕ	6
Main Description	6
360 PICTURES	6
MANUFACTURER DESCRIPTION	6
DECK FEATURES	6
INTERIOR AMENITIES	7
Safety Equipment	7
ADDITION EQUIPMENT	7
Mechanical	7
Electrical Equipment	7
Galley	8
Heads	8
Disclaimer	8
Исключения	8
Отказ от ответственности	8
ФОТОГРАФИИ	9
3 2007 Silverton 35MY Aft Port Profile	9
2 2007 Silverton 35MY Aft Starboard Profile	9
5 2007 Silverton 35MY aft view	10

---

7 2007 Silverton 35MY Radar Arch	10
КОНТАКТЫ	18
Контактная информация	18
Телефоны	18
Время работы	18
Адрес	18

# ХАРАКТЕРИСТИКИ

## Обзор

This FRESH WATER beauty has been professionally maintained since day 1, operated by a USCG/homeland security professional, and is ready for you to call her yours. Silverton is known for optimizing the interior space by creating a full beam salon with the walk over vs the walk around side decks. Her 6 foot 4 inches of headroom allow ample clearance, her molded fiberglass stairs make for ease of entry, and her sleek looks will make her the envy of the dock. Bottom Paint and Anodes done in 2014 Routine Engine and Generator Maintenance done April 2019 New Refrigerator/Freezer in 2017 New Canvas / Strataglass in 2014

## Основная информация

**Тип судна:** SHELBY

**Подкатегория:** Aft Cabin

**Модельный год:** 2007

**Год постройки:** 2007

**Страна:** United States

## Размеры

**Длина общая:** 35' 0" (10.67m)

**Ширина:** 13' 4" (4.06m)

**Мин. осадка:** 2' 11" (0.89m)

**Макс. осадка:** 2' 11" (0.89m)

**Трапы:** 16' 0" (4.88m)

## Скорость, вместимость и масса

**Крейс. скорость:** 18 Kts. (21 MPH)

**Макс. скорость:** 27 Kts. (31 MPH)

**Вместимость воды:** 94 Gallons

**Вместимость сточного бака:** 55 Gallons

**Объем топливного бака:** 286 Gallons

## Размещение

---

**Всего кают:** 2

**Всего коек:** 2

**Всего ком. состава:** 2

## Корпус и палуба

---

**Материал корпуса:** Fiberglass

## Информация о двигателе

---

**Двигатели:** 2

**Производитель:** Crusader

**Модель:** 8.1 L

**Тип двигателя:** Inboard

**Тип топлива:** Gas/Petrol

---

# ПОДРОБНОЕ ОПИСАНИЕ

---

## Main Description

---

This FRESH WATER beauty has been professionally maintained since day 1, operated by a USCG/homeland security professional, and is ready for you to call her yours. Silverton is known for optimizing the interior space by creating a full beam salon with the walk over vs the walk around side decks. Her 6 foot 4 inches of headroom allow ample clearance, her molded fiberglass stairs make for ease of entry, and her sleek looks will make her the envy of the dock. Bottom Paint and Anodes done in 2014 Routine Engine and Generator Maintenance done April 2019 New Refrigerator/Freezer in 2017 New Canvas / Strataglass in 2014

## 360 PICTURES

---

Copy and Paste the link into your browser to view 360 degree views of each listed space. Generator Compartment - Engine Compartment - Aft Head - Aft Cabin - Salon 1 - Fwd Head - Fwd Cabin 1 - Fwd Cabin 2 -

## MANUFACTURER DESCRIPTION

---

With her streamlined international flair, few boats of this class look as fast as our 35 Motor Yacht. And with a pair of 8.1-L Crusader engines driving her, that racy style is not deceiving. The interior design of the 35 Motor Yacht is equally accomplished. The large main cabin integrates the amenities of a salon, dinette, and generously equipped galley into one fluent space. Satin cherry hardwoods are reflected in horizontal surfaces, cabinetry, doors, and bulkheads. A split-stateroom plan ensures privacy. Both handsomely appointed staterooms onboard the 35 Motor Yacht feature a large double-berth and hanging locker. The master has an en-suite head with stall shower; a second head with split shower serves the guest stateroom and also a day head. The 35 Motor Yacht salon ultraleather sofa converts to a double-bed supplementing the stateroom's accommodations. The bridge of the 35 Motor Yacht offers an unobstructed view of pleasures ahead while Silverton's innovative SideWalk permits safe passage to the foredeck. The sheltered aft deck satisfies those who prefer to entertain out of reach of unfavorable weather.

## DECK FEATURES

---

AM/FM Single CD Stereo/iPod - Flybridge Aft Deck Hardtop Aft Deck Weather Boards Anchor Roller w/Flange Bow Pulpit 1? Bow Rails 316L Stainless Steel Hardware Dockside Water Connection Electrical Storage Locker in Transom Flybridge Handrails - Stainless Steel Flybridge Storage in Seating Frameless Opening windows Molded-In Diamond Non-Skid Mooring, Quarter, & Spring Cleats SideWalk Molded Steps to Bridge Stainless Steel Steering

Wheel Swim Platform w/Ladder Tempered Safety Glass Transom Shower Transom Storage Wet Bar

---

## INTERIOR AMENITIES

---

AM/FM Single CD Stereo - Salon Certified Marine Sanitation System Convertible Sofa Custom Blinds Designer Draperies Designer Bedspreads Designer Accent Pillows Entertainment Center Furniture Grade Cherry Cabinetry High Gloss Horizontal Cabinet Surfaces Innerspring Mattresses Overhead Hatches w/ Screens 100% Nylon Scotchgard Protected Carpeting Solid Cherry Passageway Doors, Cabinet and Drawer Face Frames Telephone/Cable TV hook ups 3 Hanging Lockers Window Screens

---

## Safety Equipment

---

Anchor and Rode Anti-Fouling Bottom Paint Ball Valves on Underwater Thru-hulls Battery Safety Switches Battery Safety Trays Boat Hook Bonding System Carbon Monoxide Detectors Compass Dock Lines Dual Horns Engine Alarms Fenders w/Line USCG approved Fire Extinguishers USCG approved Fire Suppression System Flare Kit Floatation Devices Fog Bell Gasoline Fume/High Water Detector Life Vests Parallel Start Switch

---

## ADDITION EQUIPMENT

---

3 Zone Air Conditioning Anchor Windlass w/ Chain Bow Thruster CD Player - Flybridge and Salon Aft Deck Strataglass. Enclosure Fly Bridge Strataglass Enclosure Raymarine E80 Chartplotter Raymarine Radar w/Color overlay to chartplotter Raymarine 215 DSC/VHF radio Exterior Carpet Generator 7.3 ECD Gas w/ Sound Shield Ice maker Interior Lighting w/Remote Internal Sea Strainers Par Quiet Flush Heds Radar Arch Remote Spotlight 23" Flat Panel HDTV w DVD Ultraleather Sofa and Dinette Fresh Water Washdown Bow and Transom

---

## Mechanical

---

Acoustic and Thermal insulation Dripless Shaft Seals Dual Lever Throttle and Transmission Controls Engine Hour meter Engine Room Lighting Fresh Water Cooling Electric Fuel Gauge Flexible USCG Type 1 Fuel lines Aluminum Fuel Tanks 2/ Baffles Fuel/Water Separators Holding Tank w/Dockside and Overboard Discharge Hydraulic Steering Macerated Pump Manganese Bronze Rudders Manganese Bronze Struts Pressurized Water System Automatic Shower Sump Pump Stainless Steel Prop Shafts Trim Tabs Underwater Exhaust Vinylester Barrier Coat Water/Holding Tank Monitors

---

## Electrical Equipment

---

AC/DC Converter Accessory Wiring on Bridge Deep Cycle Marine Batteries 12v and 120v Circuit Breakers Color Coded 12v Harnessed Wiring System 30amp Shore Power Connection w/Cord GFCI System Gloomed TV/FM antenna 12v interior and Courtesy Lighting COLREGS Navigaiton Lights Polarity Indicators High Quality Tinned Stranded Copper Wiring

## Galley

---

Amtico Flooring Corian Countertops Microwave/Convection Oven 2 Burner Electric Range AC/DC Refrigerator/Freezer

## Heads

---

Corian Countertops Designer Faucets Electric Heads Enclosed Stall Showers Exhaust Fans Medicine Cabinet GFCI Outlet

## Disclaimer

---

The Company offers the details of this vessel in good faith but cannot guarantee or warrant the accuracy of this information nor warrant the condition of the vessel. A buyer should instruct his agents, or his surveyors, to investigate such details as the buyer desires validated. This vessel is offered subject to prior sale, price change, or withdrawal without notice.

## Исключения

---

При продаже яхты исключаются личные вещи владельца.

## Отказ от ответственности

---

Компания предоставляет описание судна или яхты добросовестно, но не может гарантировать точность этой информации, а также не ручается за техническое состояние. Покупатель должен проинструктировать своих агентов или оценщиков исследовать представленную информацию более подробно, по собственному желанию. Продажа судна или яхты, изменение цены или снятие с продажи будет происходить без предварительного уведомления.



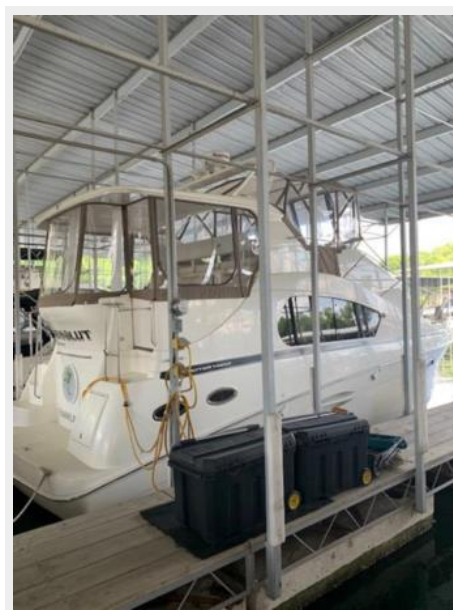
# ФОТОГРАФИИ



**3 2007 Silverton 35MY Aft Port Profile**



**2 2007 Silverton 35MY Aft Starboard Profile**



### 5 2007 Silverton 35MY aft view

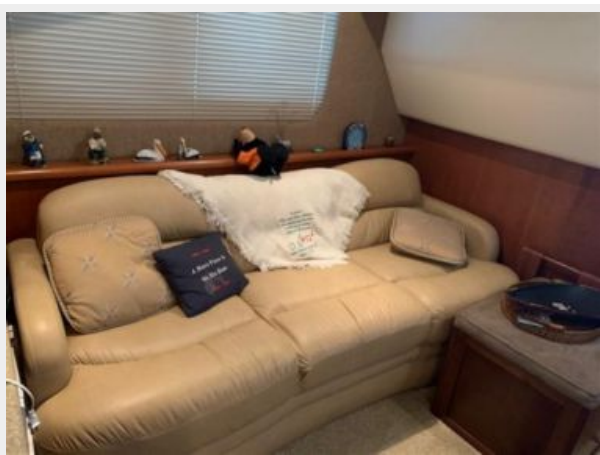


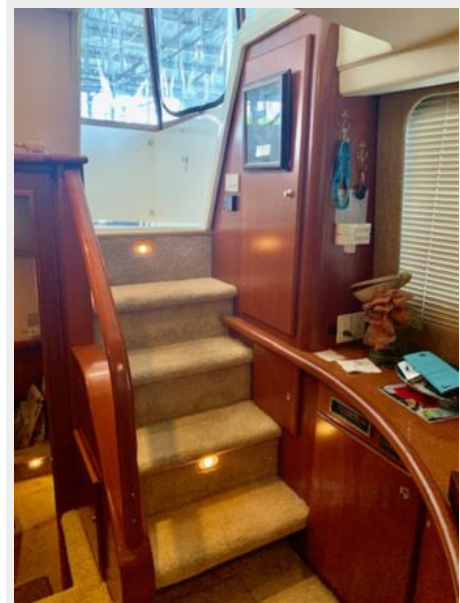
### 7 2007 Silverton 35MY Radar Arch













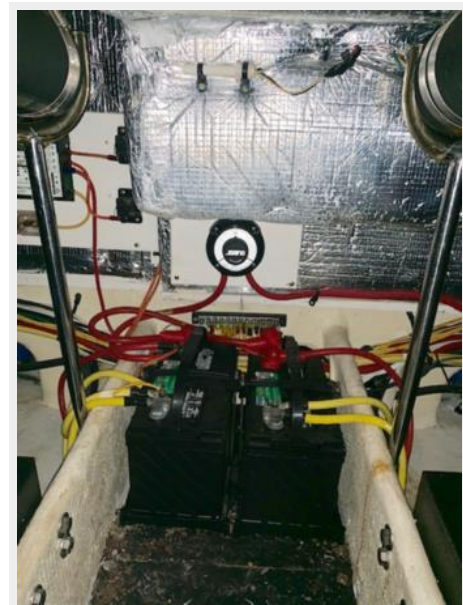












# КОНТАКТЫ

---

Андрей Шестаков (Andrey Shestakov) – ведущий яхтенный брокер отдела продаж яхт и судов компании Shestakov Yacht Sales Inc. Официальный представитель Shestakov Yacht Sales Inc. для русскоговорящих клиентов в центральном офисе компании в Майами/Форт Лодердейл/Флорида/США.

## Контактная информация

---

Email: [andrey@shestakovyachtsales.com](mailto:andrey@shestakovyachtsales.com)

Web: [shestakovyachtsales.com](http://shestakovyachtsales.com)

## Телефоны

---

Краснодарский край: **+7(918)465-66-44**

США, Майами, Флорида: **+1(954)274-4435**

## Время работы

---

Понедельник – Суббота: **9:00 - 21:00**  
EDT

Воскресенье: **Закрито**

## Адрес

---



Harbour Towne Marina, 850 NE 3rd St,  
STE 213, Dania, FL 33004