

ELENA MAE — OFFSHORE



Судостроитель: OFFSHORE

Год постройки: 1998

Модель: SHELBY

Цена: ЦЕНА ЯХТЫ ПО ЗАПРОСУ

Местонахождение: United States

Длина общая: 62' 0" (18.90m)

Ширина: 16' 10" (5.13m)

Макс. осадка: 5' 0" (1.52m)

Крейс. скорость: 15 Kts. (17 MPH)

Макс. скорость: 20 Kts. (23 MPH)

Купить Elena Mae — OFFSHORE а также выбрать подходящую вам яхту из нашего каталога яхт вам поможет опытный яхтенный брокер Андрей Шестаков. На сегодняшний день компания Shestakov Yacht Sales Inc. имеет большое количество яхт в собственном списке продаж, а также тесно сотрудничает со всеми крупными яхтенными производителями по всему миру.

Для того чтобы купить яхту Elena Mae — OFFSHORE а также проконсультироваться по любому вопросу связанному с покупкой, продажей, чартером яхт позвоните по телефону **+7(918)465-66-44**.

ОГЛАВЛЕНИЕ

ОГЛАВЛЕНИЕ	2
ХАРАКТЕРИСТИКИ	4
Обзор	4
Основная информация	4
Размеры	4
Скорость, вместимость и масса	4
Размещение	5
Корпус и палуба	5
Информация о двигателе	5
ПОДРОБНОЕ ОПИСАНИЕ	6
Accommodations	6
Main Salon	6
Galley	6
Pilothouse	6
Master Stateroom	7
Master Head	7
VIP Stateroom	7
Forward Head	8
Guest Stateroom #2	8
Flybridge / Upper Helm	8
Deck Equipment	8
Cockpit	8
Engine / Mechanical	9
Electrical	9
Additional	9
Exclusions	10
Исключения	10
Отказ от ответственности	10

ФОТОГРАФИИ	11
КОНТАКТЫ	16
Контактная информация	16
Телефоны	16
Время работы	16
Адрес	16

ХАРАКТЕРИСТИКИ

Обзор

The Offshore 62 the perfect yacht for a couple or a small family to do some extensive cruising. The 3 stateroom 2 head layout has a mid ship master with en-suite head and a separate stairwell which provides privacy to the owners. The salon and Pilothouse provides the ability to sleep four additional guests if necessary. The boat was designed by William Crealock and features a deep forefoot at entry and gradual lessening of dead rise going aft. This hull form provides a very smooth ride and the low center of gravity provides great stability. Elena Mae is priced very aggressively and will provide a great cruising platform for a couple or family.

Основная информация

Тип судна: SHELBY

Подкатегория: Pilothouse

Модельный год: 1999

Год постройки: 1998

Страна: United States

Регистрационный номер: 1079728

Верх: Bimini Top

Размеры

Длина общая: 62' 0" (18.90m)

Ширина: 16' 10" (5.13m)

Макс. осадка: 5' 0" (1.52m)

Трапы: 17' 6" (5.33m)

Скорость, вместимость и масса

Крейс. скорость: 15 Kts. (17 MPH)

Макс. скорость: 20 Kts. (23 MPH)

Водоизмещение: 65500 Pounds

Вместимость воды: 400 Gallons

Вместимость сточного бака: 85 Gallons

Объем топливного бака: 1000 Gallons

Размещение

Всего кают: 3

Всего ком. состава: 2

Корпус и палуба

Материал корпуса: Fiberglass

Отделка корпуса: Aluminum

Информация о двигателе

Двигатели: 2

Производитель: Caterpillar

Модель: 3406E

Тип двигателя: Inboard

Тип топлива: Diesel

ПОДРОБНОЕ ОПИСАНИЕ

Accommodations

"Elena Mae" features a large cockpit with easy access to the swim platform and a ladder to the aft flybridge deck. Forward through a sliding door is the main salon, with the galley forward to port and the private entrance to the master suite down a starboard stairway. Up a couple of steps past the galley is the pilothouse, with port and starboard side deck doors and an inside stairway to the flybridge. The separate VIP stateroom and guest cabin lie forward down a stairway to starboard. The guest cabin is to port, with the VIP suite forward and head starboard.

Main Salon

The main salon is open and airy with opening side and aft windows and a sliding door aft. It has a c-shaped settee to port with chair and entertainment center strb. The beautiful teak joinery work was complemented in 2010 with all new decorating, including new sculptured carpet, custom settee fabrics, window shades and valences. It has flush rheostat controlled overhead lighting and new side lighting. • C-shaped settee with storage under • Teak fold-out hi-lo table seats 8 • Marine Aire digital AC control • Sliding aft door with integral scene (OR SCREEN?) • Teak corner cabinet • KVH TracVision satellite TV system • Envision 32" flat panel HDTV • Cinema Station DVD player

Galley

Located just forward of the salon, it is well designed for convenience and features ample storage in teak drawers and cabinets, with additional storage under the steps to pilothouse. It has Corian countertops and teak and holly sole. There is a bar/cabinet to starboard and floor access to the engine room.

• Jenn-Air double refrigerator/freezer (23 cu. Ft.) • Jenn-Air oven/broiler • Regency VSA 4-burner cooktop • GE Spacesaver II microwave • Miele dishwasher • InSinkErator disposal • Broan trash compactor • Large stainless-steel sink with pull-out faucet • Single filtered water faucet • (6) Cabinets with rollouts • (5) Drawers • Bar cabinet to starboard with 3 cabinets

Pilothouse

The pilothouse has fine teak joinery work and teak and holly sole. It features a fully equipped helm station with chart table and storage, (2) helms chairs, port and starboard sliding side deck doors plus overhead hatch (screen and shade), L-shaped settee and large teak hi-lo dinette table, and strb. side bar/cabinet with Sub-Zero refrigerator. All settee and helm chair fabrics, and shades have been updated in 2010. It should be noted that the side windows were also updated

to fixed glass windows in 2010 to reflect the later model design change.

- Caterpillar engine monitoring system• Datamarine Link wind speed/direction, speed/log, and multi-instrument• Lowrance X65 depth sounder• ICOM IC-M127 VHF• Simrad Robertson AP20 autopilot• Garmin GPS MAP 5215 touch screen chart plotter• Furuno 48-mile radar• Furuno 1933C NavNet chart plotter• Bennett trim tab controls• Glendinning engine synchronizers• Wesmar bow thruster joystick• Wesmar stabilizer control• Vessel systems warning monitor• C-phone intercom system• ACR remote spotlight control• Windlass control• Electrical and genset panels• Emergency bilge pump controls• Ritchie Powerdamp compass• Weems and Plath clock and barometer• FCI R.O. watermaker control• TankWatch II tank level monitor• Fireboy engine shut-down system• Pioneer FH 404 CD tuner• Raymarine NAV 398 GPS/Loran• Interphase Twinscope sonar• Heart Link 2000 monitor• Bose Acoustimass 3-speaker system• (2) Marine Air digital AC controls

Master Stateroom

The master has a private entry from the main salon allowing for total separation from the forward staterooms. It also features a large ensuite head with stall shower. It has a king centerline berth, exceptional storage in drawers, cabinets, and extensive hanging lockers. It is finished in fine teak joinery work and has all new custom bedding, sculptured carpeting and wall covering. There are (2) opening ports to port and an emergency hatch overhead leading to the pilothouse. The laundry is in the companionway just outside this stateroom. • Centerline king berth with 4-drawers storage under• Built-in teak vanity• (3) Large hanging lockers• Large mirror• Flush overhead lighting• Nightstands with cabinets and drawers• Samsung 19" flat panel HDTV• Marine Air digital AC control• Datamarine Link multi-instrument• Whirlpool full-size washer and dryer in companionway

Master Head

The ensuite master head has dual access and can be used as a day head as required.

- VacuFlush toilet• Corian counters• Brass and chrome single lever faucet• Built-in teak cabinets and medicine chest• Teak and holly sole• Separate stall shower with seat and bi-fold glass door• Opening ports in head and stall shower

VIP Stateroom

This spacious stateroom features a centerline queen berth, (2) hanging lockers, along with ample drawers and cabinets for storage. It has new sculptured carpet, custom bedspread and pillow shams, and custom wall coverings.

- Marineair digital AC control• Centerline queen berth with 4 drawers under• (2) Large hanging

lockers• Dynex flat panel HDTV

Forward Head

This head has dual access and functions as ensuite head for VIP stateroom and also can be used by the other guest cabin. • Overhead hatch • VacuFlush toilet • Corian counter • Brass and chrome faucet • Teak and holly sole • (3) cabinet • (1) drawer • Stall shower w/glass bi-fold door and seat

Guest Stateroom #2

This cabin has over/under single berths with new custom bedspreads, sculptured carpet, wall coverings and countertops. There is an overhead hatch and an opening port. • Hanging locker • (3) drawers • (5) cabinets • Large mirror • Solid teak pocket door • Opening port • Overhead hatch

Flybridge / Upper Helm

The expansive flybridge has a midship seating area with wraparound settee, helm chairs (new fabrics 2010), and two tables. Aft is the dinghy storage with davit and plenty of space for lounging. The helm is protected by a Bimini and all antennas are mounted on a classic yacht mast. The flybridge can be accessed from the pilothouse and the cockpit. • Caterpillar engine monitoring system • Garmin GPS map 5212 touchscreen chart plotter (2010) • Furuno 1722C chart plotter/radar (24 mi.) • Interphase Twinscope sonar • Ritchie Powerdamp compass • ACR remote spotlight control • Horizon Spectrum VHF • Wesmar bow thruster joystick • Glendinning engine synchronizers • Datamarine Link wind speed/direction • Datamarine Link multi • Bennett trim tab control • C-phone intercom • S.S. destroyer wheel • Bimini top (2009) • Wrap-around settee (storage under) • (2) teak trimmed hi-lo tables • (2) helm chairs • Wet bar with cabinets • U-Line icemaker • Large Frigibar Freezer/refrigerator - recent rebuild • Yacht mast for all antennas and deck floodlights • Heavy S.S. safety rail (safety netting) • MarQuipt low profile davit

Deck Equipment

This vessel has wide side decks and a wide flat foredeck for safe movement. There is also a comfortable built-in deck seat with storage under (contains shore power and deck wash outlets). • Integral bow pulpit w/S.S. double anchor roller • Maxwell electric windlass (w/deck switches) • (2) Delta anchor (88# and 55#) • Heavy S.S. bow rail • Windshield sunscreen • (3) two speed windshield wipers • Side deck boarding gates • (2) Heavy side deck spring line cleats/hausers • Heavy side deck hand rails

Cockpit

The large cockpit has teak floors and varnished teak coamings. There are (2) flood lights, (4) overhead lights, and deck level courtesy lights. There is a wide transom door for access to the integral swim platform with swim ladder. • Lower aft helm with S.S. wheel, engine controls and bow thruster joystick • Wet bar with cabinets (houses Brownie's dive compressor) • Ladder to flybridge • (2) large hatches (port and strb. storage) • Large lazarette hatch (huge storage area) • Transom door • Concealed deck shower and salt and freshwater deck wash • Dock water receptacle • S.S. swim platform rails

Engine / Mechanical

There are (3) ways to access the engine room. There is a floor hatch in the galley, a convenient large hatch outside at the rear of the main salon, and also through the large lazarette hatch. • 3406E Caterpillar diesels • ZF IRM-350-1 transmissions (2.077-1) • Dripless packing • Wesmar stabilizers • Wesmar bow thruster (dual prop 4-blade) • FCI watermaker (1500 gal./day) • (5) 12000 BTU AC/Heat unit • (2) dual 75/1000 Racor fuel filters • Dual fuel transfer manifolds with site gauges • Hynautics hydraulic steering system • Fireboy automatic fire suppression system • Reverso automatic oil change system • Fuel transfer pump • Teel 110v. water pump • Headhunter Mark V 110V water pump • Headhunter Excalibur 12V water pump • Saltwater pump • (5) Rule automatic bilge pumps • (2) Rule 8000 emergency bilge pumps • Spur prop shaft line cutters

Electrical

• (2) 21KW Phasor gensets (2,211 hrs.) All new back ends. • Charles C-charger (40amp.) • Charles C-charger (50amp.) • Charles C-charger (20amp.) • Heart 2500-watt inverter/charger • Heart link 2000 battery monitor • Dual 50amp. shore power receptacles (foredeck and transom) • (2) 50amp. shore power cords • (7) Guest and (1) Blue Seas selector switches • Batteries (1) Ready Power V31, (1) Deka 24M6, (4) Powermate 8D, (16) 6V8G • AC/DC control panels and genset control in pilothouse

Additional

• Novurania 430DL RIB w/50hp Yamaha 4-stroke outboard • Covers for all seating, helm and coaming areas • Hull was sandblasted, barrier coated, and bottom painted in 2010 • Shafts and props were checked and tuned as required in 2010 • Watermaker • Dive compressor • (2) Outriggers • Camera System • Electric grill with 220 service • Anchors with chain (length?) • Tilt down mast • Racor filters • Stabilizers • Rear helm station

NEW OR UPGRADED: • Custom stainless-steel rack for kayaks • New tender engine 2017 • Redecorated 2013 • New engine and thruster batteries • Both generators rebuilt over the past 2 years • New stereo system with amplifier • New refrigerator • New air conditioning units (Doug to provide) Replaced salon 2016 and replaced pilothouse 2017 • New Ghost security system

Exclusions

• Kayak• Surfboard• Fishing equipment • Charts and Books• The Dolphin fish• The tray and decorative plate in the salon• V-berth bedding• Master bedroom coverlet, pillow sham covers• 2 brown leather pillows on twin beds• All tools

Anything not affixed to the boat excluding tender, life jackets, bedding/mattress, sheets, pillows, etc., unless mutually agreed upon by Buyer and Seller.

Исключения

При продаже яхты исключаются личные вещи владельца.

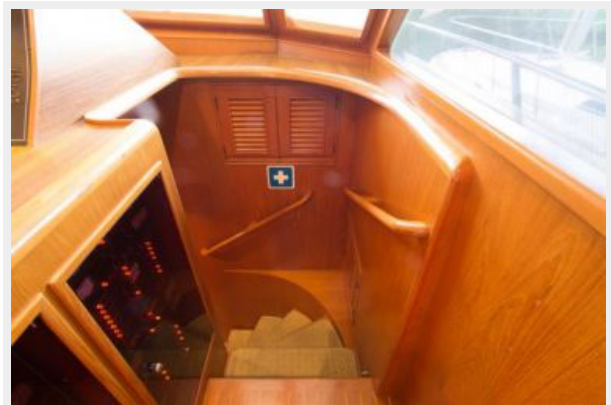
Отказ от ответственности

Компания предоставляет описание судна или яхты добросовестно, но не может гарантировать точность этой информации, а также не ручается за техническое состояние. Покупатель должен проинструктировать своих агентов или оценщиков исследовать представленную информацию более подробно, по собственному желанию. Продажа судна или яхты, изменение цены или снятие с продажи будет происходить без предварительного уведомления.

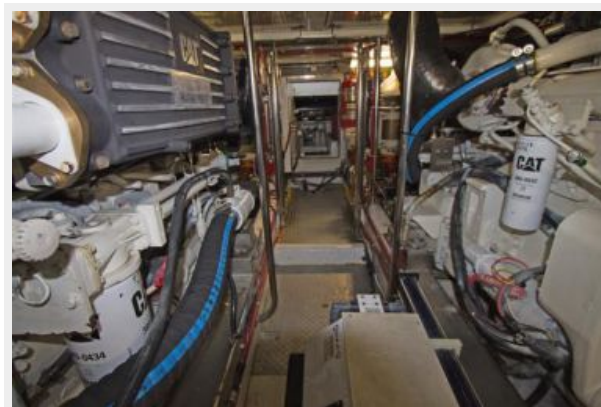
ФОТОГРАФИИ











КОНТАКТЫ

Андрей Шестаков (Andrey Shestakov) – ведущий яхтенный брокер отдела продаж яхт и судов компании Shestakov Yacht Sales Inc. Официальный представитель Shestakov Yacht Sales Inc. для русскоговорящих клиентов в центральном офисе компании в Майами/Форт Лодердейл/Флорида/США.

Контактная информация

Email: andrey@shestakovyachtsales.com

Web: shestakovyachtsales.com

Телефоны

Краснодарский край: **+7(918)465-66-44**

США, Майами, Флорида: **+1(954)274-4435**

Время работы

Понедельник – Суббота: **9:00 - 21:00**
EDT

Воскресенье: **Закрето**

Адрес



Harbour Towne Marina, 850 NE 3rd St,
STE 213, Dania, FL 33004