

## **SHEENA — OCEAN ALEXANDER**



**Builder:** OCEAN ALEXANDER

**Year Built:** 1991

**Model:** SHELBY

**Price:** PRICE ON APPLICATION

**Location:** United States

**LOA:** 54' 0" (16.46m)

**Beam:** 15' 5" (4.70m)

**Min Draft:** 4' 6" (1.37m)

**Max Draft:** 4' 6" (1.37m)

**Cruise Speed:** 9 Kts. (10 MPH)

**Max Speed:** 22 Kts. (25 MPH)

Our experienced yacht broker, Andrey Shestakov, will help you choose and buy a yacht that best suits your needs **Sheena — OCEAN ALEXANDER** from our catalogue. Presently, at Shestakov Yacht Sales Inc., we have a wide variety of yachts available on our sale's list. We also work in close contact with all the big yacht manufacturers from all over the world.

If you would like to buy a yacht **Sheena — OCEAN ALEXANDER** or would like help answering any questions concerning purchasing, selling or chartering a yacht, please call **+1(954)274-4435**

---

# TABLE OF CONTENTS

---

TABLE OF CONTENTS	2
SPECIFICATIONS	3
Overview	3
Basic Information	3
Dimensions	3
Speed, Capacities and Weight	3
Accommodations	3
Hull and Deck Information	4
Engine Information	4
DETAILED INFORMATION	5
Main Description	5
Accommodations	5
Galley	5
MASTER STATRROOM	5
Electronics	6
Mechanical	6
Electrical Equipment	6
Disclaimer	6
Exclusions	7
Disclaimer	7
PHOTOS	8
CONTACTS	20
Contact details	20
Telephones	20
Office hours	20
Address	20

---

# SPECIFICATIONS

---

## Overview

---

Sheena is a 1991 54' Ocean Alexander raised pilothouse motoryacht. She offers twin Caterpillar 3208 425 HP main engines, Westerbeke 15 kW generator and a Northern Lights 5 kW generator, four 120 watt solar panels, hydraulic bow and stern thrusters, 2 inverters, watermaker and a three stateroom two head layout. Sheena is Great Loop capable.

## Basic Information

---

**Category:** SHELBY

**Sub Category:** Pilothouse

**Model Year:** 1991

**Year Built:** 1991

**Country:** United States

## Dimensions

---

**LOA:** 54' 0" (16.46m)

**Beam:** 15' 5" (4.70m)

**Min Draft:** 4' 6" (1.37m)

**Max Draft:** 4' 6" (1.37m)

**Clearance:** 19' 0" (5.79m)

## Speed, Capacities and Weight

---

**Cruise Speed:** 9 Kts. (10 MPH)

**Max Speed:** 22 Kts. (25 MPH)

**Displacement:** 44000 Pounds

**Water Capacity:** 300 Gallons

**Holding Tank:** 40 Gallons

**Fuel Capacity:** 600 Gallons

## Accommodations

---

**Total Cabins:** 3

**Total Heads:** 2

---

## Hull and Deck Information

---

**Hull Material:** Fiberglass

## Engine Information

---

**Engines:** 2

**Manufacturer:** Caterpillar

**Model:** 3208

**Engine Type:** Inboard

**Fuel Type:** Diesel

---

# DETAILED INFORMATION

---

## Main Description

---

Sheena is a 1991 54' Ocean Alexander raised pilothouse motoryacht. She offers twin Caterpillar 3208 425 HP main engines, Westerbeke 15 kW generator and a Northern Lights 5 kW generator, four 120 watt solar panels, hydraulic bow and stern thrusters, 2 inverters, watermaker and a three stateroom two head layout. Sheena is Great Loop capable.

## Accommodations

---

Entering from the swim platform through transom door into the cock pit you have access to the sidedecks with molded fiberglass steps. The aft bulkhead affords ample natural light into salon with double sliding doors. The salon has a very open and airy feel with the expansive windows on port and starboard covered with wood blinds. The interior is completely carpeted with upgraded bound carpeting throughout the vessel. The U-shape galley is forward and offers ample counter and storage space and all the amenities of the kitchen at home including dishwasher and garbage disposal. Continuing forward on starboard up three steps to pilothouse with starboard access to sidedeck; plenty of room for laying out charts and ample U shaped seating for dining. Continuing forward and down on starboard to sleeping compartments with master stateroom forward and guest cabins on port and starboard aft. The guest head is located and accessed from the companionway. Both heads have Vacu-Flush head systems. The stacked washer dryer is accessed from the starboard stateroom. Returning to the pilothouse and up steps to covered flybridge with ample seating and easy access to navigational gear. On aft deck there is ample room for the 12' sailing dinghy and davit.

## Galley

---

- Corian Countertops
- Frigidaire 18 cu ft 2 door refrigerator
- Frigidaire 4 Element Glass cooktop
- Whirlpool Microwave
- Frigidaire Convection Oven
- Broan Trash Compactor
- Magic Chef Dishwasher
- U-Line Ice Maker
- Double galley Sink with Disposal

## MASTER STATRROOM

---

- Walk around bed

- Ensuite with Jacuzzi tub and vacu-flush head
- 24" Samsung TV

---

## Electronics

---

- Navigation Computer Lenovo W520 Windows 10 with Nobeltec TimeZero Navigator 3.3.0.38 Software and Samsung 17" Monitor. Charts up to date.
- Interphase Twin Scope Depth Sounder
- Furuno #1940 Radar
- Simrad AP28 AutoPilot
- (3) GlobalSat GPS inputs for computer
- Alarm Systems
  - Temperature
  - High Water
  - Smoke
  - Engine room Fire
- Epirb - ARC model RLB37
- Samsung 28" TV with DVD Player

---

## Mechanical

---

- Bruce 66 lb Anchor with 250' of 5/16 galvanized Chain
- Maxwell Nilsso VWC3500 Windlass
- Raw Water Washdown
- Fresh water Washdown
- Watermaker -Village Marine 16 GPH
- Thrusters Bow and Stern - Hydraulic Powered
- (3) Air Conditioners Cruisair 16,000 BTU
- (1) Air Conditioner Cruisair 24,000 BTU
- Marquipt 6 Step Sea Stairs Mounted Port or Starboard

---

## Electrical Equipment

---

Generator 1 Northern Lights 5KW (2800 hrs) Generator 2 Westerbeke 15 KW (2650 hrs) 400 watt solar charging ( 4 x 100 watt panels on foredeck with MPPT controller) Batteries 4 x size 8D AGM 260 amp hours each Dedicated generator start battery Group 31 SLA 950 CCA Battery charger Pro Mariner 1260P 60 amp Inverters ? 2 x Xantrex Prowatt SW 1,000 Shore power 50 amp 220 volt with bow or stern inlet and 50 ft cord LED lighting throughout

---

## Disclaimer

---

---

The Company offers the details of this vessel in good faith but cannot guarantee or warrant the accuracy of this information nor warrant the condition of the vessel. A buyer should instruct his agents, or his surveyors, to investigate such details as the buyer desires validated. This vessel is offered subject to prior sale, price change, or withdrawal without notice.

## **Exclusions**

---

Owner's personal belongings.

## **Disclaimer**

---

The Company offers the details of this vessel or yacht in good faith but cannot guarantee or warrant the accuracy of this information nor warrant the condition of the vessel. A buyer should instruct his representatives, agents, or his surveyors, to investigate such details as the buyer desires validated. This vessel or yacht is offered subject to prior sale, price change, or withdrawal without notice.

# PHOTOS



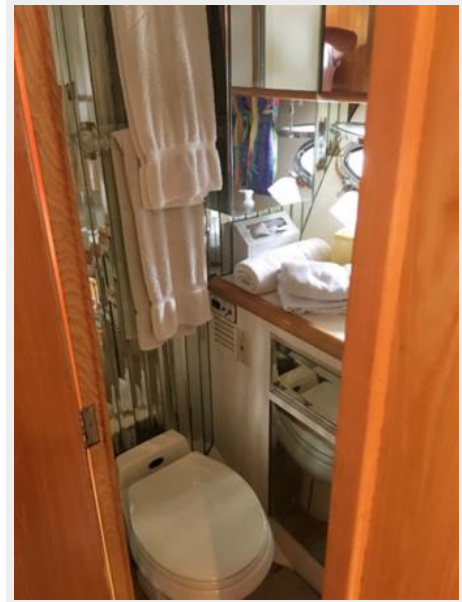




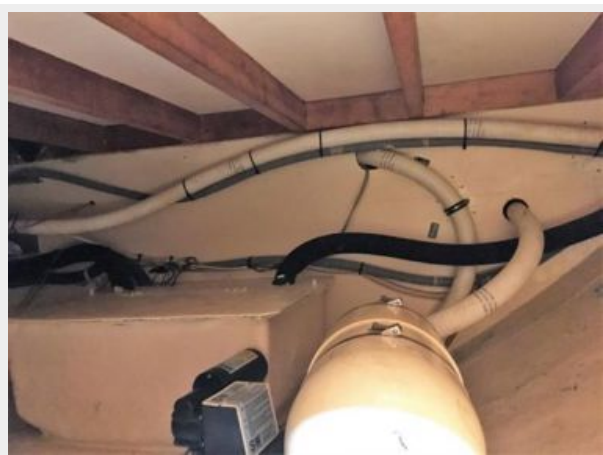


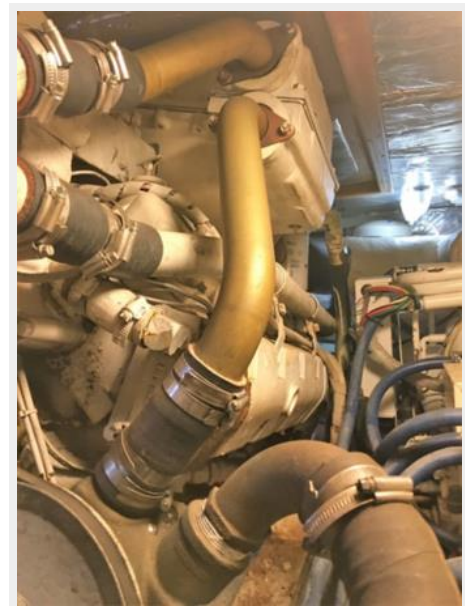
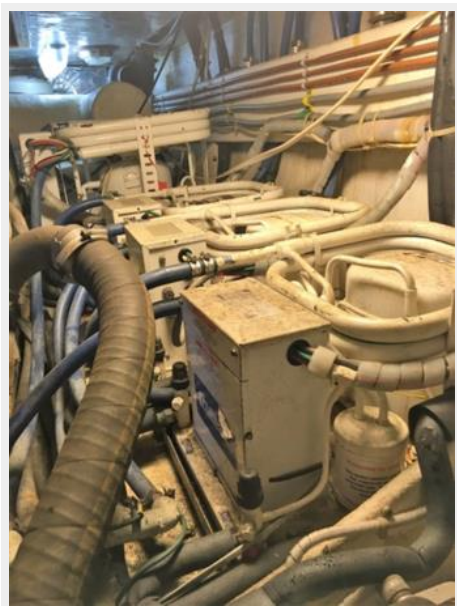




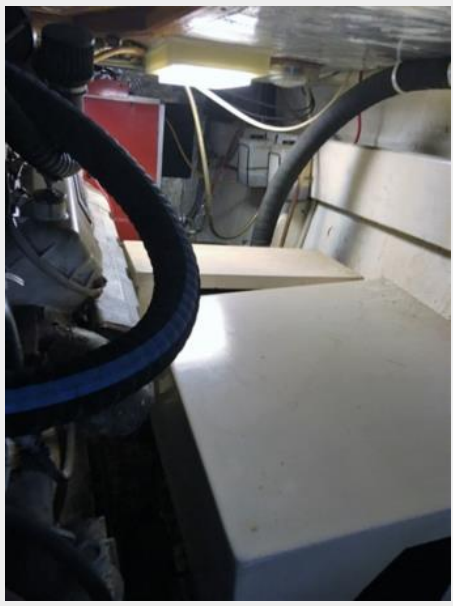
















---

# CONTACTS

---

Andrey Shestakov, leading yacht broker of the sales department of Shestakov Yacht Sales Inc. Shestakov Yacht Sales Inc., the official representative of the Miami/Fort Lauderdale FL headquarters.

---

## Contact details

---

Email: [andrey@shestakovyachtsales.com](mailto:andrey@shestakovyachtsales.com)

Web: [shestakovyachtsales.com/en/](http://shestakovyachtsales.com/en/)

---

## Telephones

---

USA: +1(954)274-4435

---

## Office hours

---

Monday – Saturday: **9:00 - 21:00** EDT

Sunday: **closed**

---

## Address

---



Harbour Towne Marina, 850 NE 3rd St,  
STE 213, Dania, FL 33004