

LA BELVA — SUNSEEKER



Builder: SUNSEEKER

Year Built: 2003

Model: Motor Yacht

Price: PRICE ON APPLICATION

Location: Mexico

LOA: 75' 7" (23.04m)

Beam: 17' 10" (5.44m)

Max Draft: 4' 11" (1.50m)

Cruise Speed: 27 Kts. (31 MPH)

Max Speed: 33 Kts. (38 MPH)

Our experienced yacht broker, Andrey Shestakov, will help you choose and buy a yacht that best suits your needs **LA BELVA — SUNSEEKER** from our catalogue. Presently, at Shestakov Yacht Sales Inc., we have a wide variety of yachts available on our sale's list. We also work in close contact with all the big yacht manufacturers from all over the world.

If you would like to buy a yacht **LA BELVA — SUNSEEKER** or would like help answering any questions concerning purchasing, selling or chartering a yacht, please call **+1(954)274-4435**

TABLE OF CONTENTS

TABLE OF CONTENTS	2
SPECIFICATIONS	5
Overview	5
Basic Information	5
Dimensions	5
Speed, Capacities and Weight	5
Accommodations	6
Hull and Deck Information	6
Engine Information	6
PHOTOS	7
Portside Bow	7
Portside Stern	7
Starboard Bow	7
View from above	7
Flybridge to bow	7
Flybridge Helm	7
Flybridge Helm	8
Flybridge Radar / TV Arch	8
Flybridge Seating	8
Flybridge Seating	8
Flybridge Seating / Lounge	8
Stern - Swim Platform	8
Aft Deck to starboard	9
Aft Deck to port	9
Aft Deck Battery Switch and Fire Extinguisher	9
Aft Deck Fridge	9
Interior Maindeck Midship	9
Saloon Staircase	9

Stairs to Flybridge	10
Interior Maindeck Midship	10
Saloon Dining Settees	10
Forward Seating	10
Forward Seating	10
Saloon Settee	10
Forward Seating	11
Forward Settee	11
Forward Settee to starboard	11
Helm Station	11
Helm Station	11
Saloon TV and Galley	11
Galley	12
Galley	12
Galley	12
Galley Window, Double Sinks	12
Galley below counter storage	12
Galley Storage	12
Galley Open Drawer	13
Galley Open Drawer	13
Cabin Details Light Switches	13
Galley Open Drawer	13
Spiral Stairs below to Staterooms	14
Light Switches	14
Master Stateroom	14
Master Stateroom TV	14
Master Head	14
Guest Stateroom	14
Guest Stateroom	15

Guest Stateroom TV	15
Guest Stateroom Windows	15
Guest Head	15
Guest Bath / Shower	15
Crew Berths	15
Crew Head	16
Engine Room Ladder Access	16
Engine Room Crew Access	16
Engine Room	16
Engine Room	17
Engine Room	17
Engine Room	17
Engine Room	17
Engine Room	17
Engine Room	18
Engine Room	18
Engine Room	18
Engine Room	18
Engine Room	18
Engine Room	19
At Anchor	19
Portside View	19
CONTACTS	20
Contact details	20
Telephones	20
Office hours	20
Address	20

SPECIFICATIONS

Overview

Voted one of the top five Best Designed Superyachts in the world, the spacious Sunseeker Manhattan 74 offers a choice of layouts to suit individual requirements, together with impressive performance. With advanced drive systems and shaft-drive engines, she can achieve an impressive 35 knots, and has a wide cruising range. A distinctive feature of the Manhattan 74 is the large lower-level saloon, complemented by an upper dining area, with seating for eight, served by a comprehensively equipped galley and bar. Accommodation includes a full-width ensuite master stateroom, as well as a further guest stateroom and two guest cabins, as well as an additional crew cabin aft.

Basic Information

Category: Motor Yacht

Sub Category: Flybridge

Model Year: 2003

Year Built: 2003

Country: Mexico

Fly Bridge: Yes

Cockpit: Yes

Dimensions

LOA: 75' 7" (23.04m)

LWL: 58' 5" (17.81m)

Beam: 17' 10" (5.44m)

Max Draft: 4' 11" (1.50m)

Clearance: 16' 5" (5.00m)

Speed, Capacities and Weight

Cruise Speed: 27 Kts. (31 MPH)

Max Speed: 33 Kts. (38 MPH)

Displacement: 81600 Pounds

Water Capacity: 290 Gallons

Fuel Capacity: 1321 Gallons

Accommodations

Total Cabins: 4

Total Heads: 4

Crew Cabin: 1

Crew Heads: 1

Hull and Deck Information

Hull Material: Fiberglass

Engine Information

Engines: 2

Manufacturer: MAN

Engine Type: Inboard

Fuel Type: Diesel

PHOTOS

Portside Bow



Portside Stern



Starboard Bow



View from above



Flybridge to bow



Flybridge Helm



Flybridge Helm



Flybridge Radar / TV Arch



Flybridge Seating



Flybridge Seating



Flybridge Seating / Lounge



Stern - Swim Platform



Aft Deck to starboard



Aft Deck to port



Aft Deck Fridge



Aft Deck Battery Switch and Fire Extinguisher



Interior Maindeck Midship



Saloon Staircase



Stairs to Flybridge



Interior Maindeck Midship



Saloon Dining Settees



Forward Seating



Forward Seating



Saloon Settee



Forward Seating



Forward Settee



Forward Settee to starboard



Helm Station



Helm Station



Saloon TV and Galley



Galley



Galley



Galley



Galley Window, Double Sinks



Galley below counter storage



Galley Storage



Galley Open Drawer



Galley Open Drawer



Galley Open Drawer



Cabin Details Light Switches



Spiral Stairs below to Staterooms

Light Switches



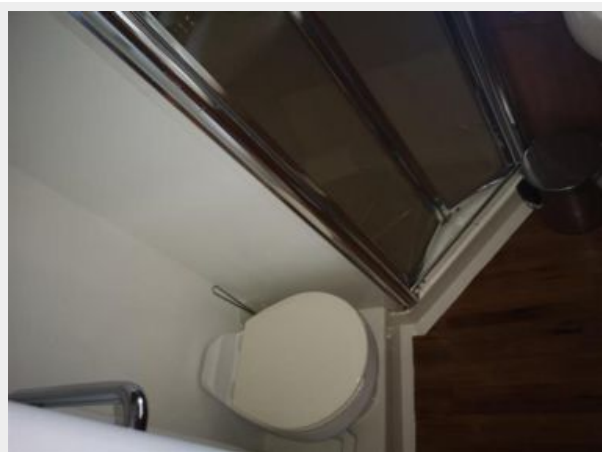
Master Stateroom



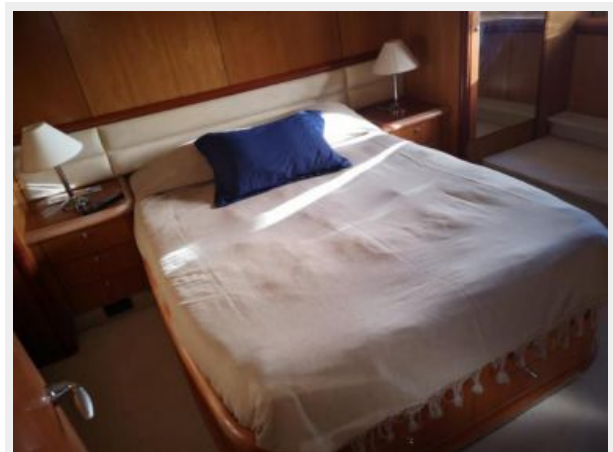
Master Stateroom TV



Master Head



Guest Stateroom



Guest Stateroom



Guest Stateroom TV



Guest Stateroom Windows



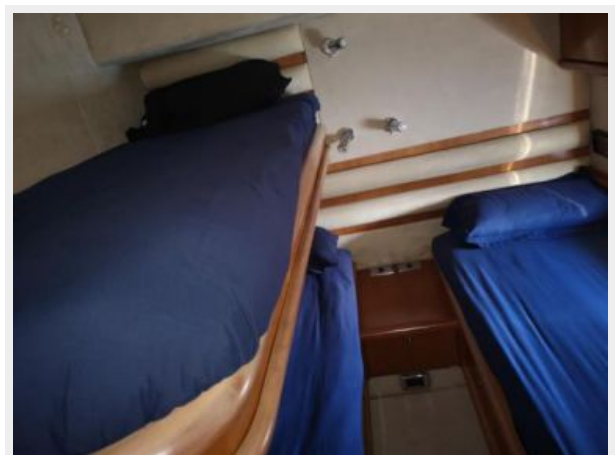
Guest Head



Guest Bath / Shower



Crew Berths



Crew Head



Engine Room Ladder Access



Engine Room Crew Access



Engine Room



Engine Room



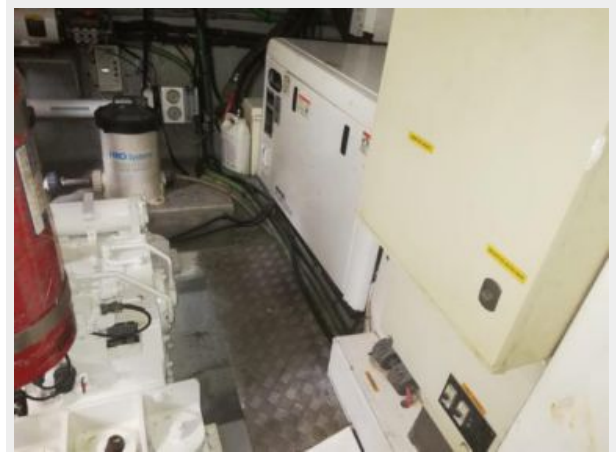
Engine Room



Engine Room



Engine Room



Engine Room



Engine Room



Engine Room

Engine Room



Engine Room



At Anchor



Portside View



CONTACTS

Andrey Shestakov, leading yacht broker of the sales department of Shestakov Yacht Sales Inc. Shestakov Yacht Sales Inc., the official representative of the Miami/Fort Lauderdale FL headquarters.

Contact details

Email: andrey@shestakovyachtsales.com

Web: shestakovyachtsales.com/en/

Telephones

USA: +1(954)274-4435

Office hours

Monday – Saturday: **9:00 - 21:00** EDT

Sunday: **closed**

Address



Harbour Towne Marina, 850 NE 3rd St,
STE 213, Dania, FL 33004