

SPIRIT OF THE EAST — AEGEAN YACHTS



Судостроитель: [AEGEAN YACHTS](#)

Год постройки: 2006

Модель: Крейсерский кеч

Цена: ЦЕНА ЯХТЫ ПО ЗАПРОСУ

Местонахождение: United States

Длина общая: 100' 0" (30.48m)

Ширина: 21' 0" (6.40m)

Макс. осадка: 10' 11" (3.33m)

Купить **Spirit of the East — AEGEAN YACHTS** а также выбрать подходящую вам яхту из нашего каталога яхт вам поможет опытный яхтенный брокер Андрей Шестаков. На сегодняшний день компания **Shestakov Yacht Sales Inc.** имеет большое количество яхт в собственном списке продаж, а также тесно сотрудничает со всеми крупными яхтенными производителями по всему миру.

Для того чтобы купить яхту **Spirit of the East — AEGEAN YACHTS** а также проконсультироваться по любому вопросу связанному с покупкой, продажей, чартером яхт позвоните по телефону **+7(918)465-66-44**.

ОГЛАВЛЕНИЕ

ОГЛАВЛЕНИЕ	2
ХАРАКТЕРИСТИКИ	5
Обзор	5
Основная информация	5
Размеры	5
Скорость, вместимость и масса	6
Размещение	6
Корпус и палуба	6
Информация о двигателе	6
ПОДРОБНОЕ ОПИСАНИЕ	7
Layout	7
Flybridge Electronics	7
Lower Helm Electronics	8
Electronics Systems	8
Deck Equipment	8
Sails and Rigging	8
Engine And Mechanical	8
Main Salon	9
Master Cabin	9
Head	9
Galley	9
Crew Cabins	9
Upgrades	9
Exclusions	10
Disclaimer	10
Исключения	10
Отказ от ответственности	10
ФОТОГРАФИИ	11

IMG_3030	14
IMG_3031	14
IMG_3033	15
IMG_3032	15
IMG_3036	15
IMG_3035	15
IMG_3037	16
IMG_3038	16
IMG_3039	16
IMG_3040	16
IMG_3041	16
IMG_3042	16
IMG_3044	17
IMG_3043	17
IMG_3045	17
IMG_3046	17
IMG_3047	18
IMG_3048	18
IMG_3049	18
IMG_3050	18
IMG_3052	19
IMG_3051	19
IMG_3053	19
IMG_3054	19
IMG_3056	20
IMG_3057	20
IMG_3058	20
IMG_3059	20
IMG_3060	20

IMG_3061	20
IMG_3062	21
IMG_3063	21
IMG_3064	21
IMG_3065	21
IMG_3066	21
IMG_3067	21
IMG_3068	22
IMG_3069	22
IMG_3070	22
IMG_3071	22
IMG_3073	22
IMG_3074	22
IMG_3075	23
IMG_3076	23
IMG_3077	23
КОНТАКТЫ	24
Контактная информация	24
Телефоны	24
Время работы	24
Адрес	24

ХАРАКТЕРИСТИКИ

Обзор

This Custom Ketch sailboat was designed by the Famous Naval Architect Stuart M. Roy, this fabulous 30.5 meter (100ft) LOA, 100 tonne, steel yacht was completed and launched at Aegean Yacht Services of Bodrum, Turkey in the spring of 2006. She completed her first full charter season in 2007. She has a beautifully smooth hull and a superb interior finish, as well as many innovative features.

The yacht has a charter certificate for Category 0 (unlimited) usage for 10-12 charter guests plus full crew.

“Spirit of the East” has the ability to make fast passages under sail or power. The yacht has a long slim hull with a tight turn of the bilge to enhance the transverse stability and sail carrying power without requiring excessively deep draft. The powerful ketch rig features high-tech sails and running rigging controlled by Harken hydraulic winches and head-sail furling systems for ease of operation.

With guest accommodation in suites, comfortable lounging cockpit areas, a luxury finish down below, stunning chestnut joinery and full air-conditioning, this yacht has proven to be very popular with charter guests. After completing 10 years of very successful chartering in the Med and Caribbean "THE SPIRIT OF THE EAST" is now ready to enter her next phase of yachting pleasure with a new owner.

Основная информация

Тип судна: Крейсерский кеч

Модельный год: 2006

Год постройки: 2006

Страна: United States

Размеры

Длина общая: 100' 0" (30.48m)

Ширина: 21' 0" (6.40m)

Макс. осадка: 10' 11" (3.33m)

Скорость, вместимость и масса

Водоизмещение: 198000 Pounds

Вместимость воды: 597 Gallons

Объем топливного бака: 1099 Gallons

Размещение

Всего кают: 5

Всего ком. состава: 5

Корпус и палуба

Материал корпуса: Fiberglass

Информация о двигателе

Двигатели: 1

ПОДРОБНОЕ ОПИСАНИЕ

Layout

Starting on the main deck, Aft, there are Stainless railings with seats built in port and stbd. Stainless steel davits are located at the stern for tender launch and retrieval. Just forward is the outside helm station with controls and a dash panel with nav gear. There is an arch above with mainsheet traveler located on top. Hydraulic genoa sheet winches are located just aft of helm station on each side. Forward of the helm is a large cockpit table with fold down wings and upholstered seating on both sides for 10. A large canvas awning on a stainless frame is located above. Decks are of beautiful Burmese teak. Moving forward, there is a large upholstered sunpad located amidships just forward of the lower helm station windshield. Seven opening hatches are located on the main deck for plenty of fresh air. Up at the bow, there is a large open deck space for foldable chairs, along with a hatch leading into the separate crew cabin for the chef and extra stew. All the way forward is the anchor windlass and walk out bow pulpit with stainless surrounding railings. Headsail and staysail are on Harken hydraulic roller furler's for ease of handling. Mainsail and mizzen are raised with assistance of a hydraulic winch. Moving down the companionway, into the raised pilot house area, to stbd and aft down three stairs is the fully equipped galley, with access to the engine room and captains and crews cabin. The main salon area is adorned in light chestnut hardwood and veneers, with champagne novasuede upholstery, and white tongue and groove ceiling panels. Soles are finished with Aikona rubber composite faux teak and holly. To stbd is a stand up bar with a white upholstered dining area forward, and to port is storage cabinetry and a pop up plasma TV and another white upholstered settee. The mizzen mast is wrapped in a chestnut box in the center of the salon with a decorative clock, barometer and thermometer mounted facing aft. Forward to port again is a chart table followed by the interior lower helm station with full instrumentation and joystick steering. Large windows surround the pilot house for great visibility and natural light. Moving below to the forward guest area, there are two queen cabins with ensuite heads, and two twin cabins with ensuite heads. All guest cabins are nicely done in light chestnut wood with air conditioning, and opening portholes for fresh air. Upholstered headboards are above the berths with reading lights for bedtime reading. The full beam master cabin is located aft of the main salon with a centerline King berth. The vessel name is written on the bulkhead above in decorative stainless steel lettering. Storage cabinets and desk top are located to stbd, and hanging locker and settee to port. The ensuite head offers his and hers sinks set in a marble countertop, with a large power shower, and vacuflush toilet.

Flybridge Electronics

- Vion Electric Barometer - Garmin Handheld GPS12 - JRC Radio Telephone JSB196GM - Raymarine E120 Chartplotter - Raymarine Fishfinder - Raymarine 48 Mile Radar - JRC GMDSS NCT-196N/NBDP Modem - Raymarine 240 VHF w/External Speaker - 16W Megaphone - Raymarine ST7001 Autopilotw/Joystick - Furuno Navtex NX-300

Lower Helm Electronics

- Raymarine ST290 Wind Display - Raymarine ST7001 Autopilotw/Joystick - Raymarine ST290 Graphic Display - Raymarine E80 Chartplotter - Raymarine Fish Finder - Raymarine 48 Mile Radar - Chipset Charts West,Central,East Med - Plastimo Compass Offshore 135 - Raymarine 240 VHF w/External Speaker

Electronics Systems

- 12v And 24v Low Battery Alarm - 12v Batt w/Charger for GDMSS Radio - 2 12v Batts for instruments & Lights - Hot Water Heater • 220v Shore Cord (50 Cycle) • Illzmar 3 Phase Isolation Transformer (Input 408v or 208v) - Kohler 31KW Generator (50 Cycle) - Kohler 11KW Generator (50 Cycle) - Climma Reverse Cycle AC Units - 2 Cristec 24v Auto Battery Chargers - Studer inverter AJ2400 2.4KW - Engine Room Camera to Bridge and Helm Displays - 12v Rechargeable Jump Start - 24v Engine Batt Bank (4 120AH Batts) - 2 12v Batts& 5amp Charger(Generator) - 24v House Batt Bank (4 120AH Batts)

Deck Equipment

- Running Lights - Stainless Stantions and Life Lines - Dock Lines And Fenders - Harken Hydraulic Winches - Cockpit Awning - German Lloyds Oversized Rigging - Cockpit Table - Radar Arch - Data Hydraulic Steering - Sun Pad - Cockpit Table - Radar Arch - Hydraulic Steering - Harken Hydraulic Roller Furlers - Passarelle - Pentex Sails - Danish Bluewave Turnbuckles

Sails and Rigging

-Staysail Ketch Rigged -Aluminum Masts and Booms -Harken Cars And Tracks -Dyneema Halyards and sheets -German Lloyds Rigging -UK Halsey DCP Pentax Tri Radial Cut Fully Battened Main and Mizzen -Slab Reefing -Blue Wave Terminals -Antal Clutches and Deck Equipment -Harken Hydraulic Winches and Furlers

Engine And Mechanical

- Caterpillar 3126B 320HP Diesel - Halyard Water Seperator For Main & Gens w/Alarm - Technicomar Watermaker 35GPH - Bruntons 4 Blade Variable Pitch Prop - Dripless Shaft Seal - Gloria Fire System - lead & High Density Foam Insulation - Side Power Hydraulic Bow Thruster - New Polyethylene Water Tanks - ZF W325 2.47:1 Transmission - Gianneschi Macerator & Fresh Water Pumps

Main Salon

- Retractable Plasma TV - Wet Bar - Dining Table w/chairs - Aikona Nonslip Composite Soles
- Novasuede Upholstered Settee

Master Cabin

- King Size Bed - Full Beam Cabin - Desk Top - Settee - 6 Portlights - Escape Hatch -
Hanging Closet - Ensuite Head

Head

- Marble Counter Tops - Twin Sink Basins - Vacuflush Head - Hot and Cold Pressure Water -
Shower Stall

Galley

- Microwave - Washer Dryer - Refrigerator/Freezer - Chest Freezer - Siemens Oven and
Cooktop - Bar Refrigerator - Dish Washer - Ice Maker - Coffee Maker - Stainless Electric BBQ
- Chilled Water Dispenser

Crew Cabins

Raymarine ST60 Graphic Display

Upgrades

-2010 Rebuilt Standing Rigging - 2010 Rewired All Electrical and Installed Isolation
Transformer - 2010 Installed Emergency Engine Driven Bilge Pump - 2010 Welded Seams In
Both Masts -2011 Installed Engine Driven Electric Generator -2011 Installed New External Air
Ventilation System Throughout Boat - 2011 Installed Additional Air Conditioner and Ice Maker In
Main Salon -2011 Refit Crews Quarters 2011 Faired Bottom and Repainted Adding Extra Knot Of
Speed -2013 Replaced All batteries And Chargers - 2013 Changed All Internal And External
Lights To LED s2 - 2013 Serviced All Nav Lights and Radio's - 2013 Updated All Navigational
Charts 2013 Serviced All Hydraulic Pumps - 2013 Serviced and Replaced All Water and AC
Pumps As Necessary - 2013 Serviced Water Makers, and Installed New Membranes - 2013
Cleaned All Water And Fuel Tanks - 2013 Inspected Standing Rigging. Replaced As necessary
and Tuned - 2013 Replaced All Running Rigging - 2013 Serviced and Re-Bedded All Winches
- 2013 All Sails were Cleaned - 2013 Repainted All Bilges and Lockers - 2013 Repainted
Hull 2013 Sanded Teak Decks 2 - 2013 Sanded All Exterior Woodwork and Applied 5 Coats Of
Varnish - 2013 Installed new Aft Deck Cover and Complete New Winter Cover

Exclusions

Owners Personal Effects

Disclaimer

The Company offers the details of this vessel in good faith but cannot guarantee or warrant the accuracy of this information nor warrant the condition of the vessel. A buyer should instruct his agents, or his surveyors, to investigate such details as the buyer desires validated. This vessel is offered subject to prior sale, price change, or withdrawal without notice.

Исключения

При продаже яхты исключаются личные вещи владельца.

Отказ от ответственности

Компания предоставляет описание судна или яхты добросовестно, но не может гарантировать точность этой информации, а также не ручается за техническое состояние. Покупатель должен проинструктировать своих агентов или оценщиков исследовать представленную информацию более подробно, по собственному желанию. Продажа судна или яхты, изменение цены или снятие с продажи будет происходить без предварительного уведомления.

ФОТОГРАФИИ









IMG_3030



IMG_3031



IMG_3032



IMG_3033



IMG_3036



IMG_3035



IMG_3037



IMG_3038



IMG_3039



IMG_3040



IMG_3041



IMG_3042



IMG_3043



IMG_3044



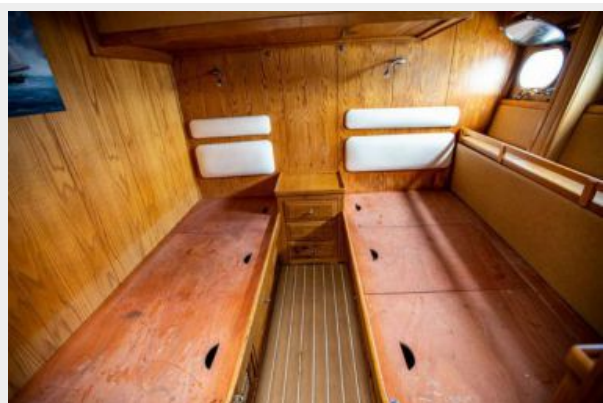
IMG_3045



IMG_3046



IMG_3047



IMG_3048



IMG_3049



IMG_3050



IMG_3051



IMG_3052



IMG_3053



IMG_3054



IMG_3056



IMG_3057



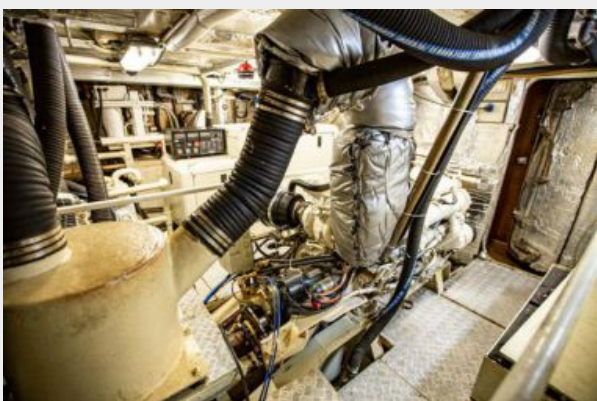
IMG_3058



IMG_3059



IMG_3060



IMG_3061



IMG_3062



IMG_3063



IMG_3064



IMG_3065



IMG_3066



IMG_3067



IMG_3068



IMG_3069



IMG_3070



IMG_3071



IMG_3073



IMG_3074



IMG_3075



IMG_3076



IMG_3077



КОНТАКТЫ

Андрей Шестаков (Andrey Shestakov) – ведущий яхтенный брокер отдела продаж яхт и судов компании Shestakov Yacht Sales Inc. Официальный представитель Shestakov Yacht Sales Inc. для русскоговорящих клиентов в центральном офисе компании в Майами/Форт Лодердейл/Флорида/США.

Контактная информация

Email: andrey@shestakovyachtsales.com

Web: shestakovyachtsales.com

Телефоны

Краснодарский край: **+7(918)465-66-44**

США, Майами, Флорида: **+1(954)274-4435**

Время работы

Понедельник – Суббота: **9:00 - 21:00**
EDT

Воскресенье: **Закрито**

Адрес



Harbour Towne Marina, 850 NE 3rd St,
STE 213, Dania, FL 33004