

MIKHAIL S. VORONTSOV — BALK SHIPYARD



Builder: BALK SHIPYARD

Year Built: 2013

Model: Motorsailor

Price: PRICE ON APPLICATION

Location: France

LOA: 211' 9" (64.52m)

Beam: 34' 6" (10.50m)

Min Draft: 15' 6" (4.70m)

Cruise Speed: 12 Kts. (14 MPH)

Max Speed: 14 Kts. (16 MPH)

Our experienced yacht broker, Andrey Shestakov, will help you choose and buy a yacht that best suits your needs **MIKHAIL S. VORONTSOV — BALK SHIPYARD** from our catalogue. Presently, at Shestakov Yacht Sales Inc., we have a wide variety of yachts available on our sale's list. We also work in close contact with all the big yacht manufacturers from all over the world.

If you would like to buy a yacht **MIKHAIL S. VORONTSOV — BALK SHIPYARD** or would like help answering any questions concerning purchasing, selling or chartering a yacht, please call **+1(954)274-4435**

TABLE OF CONTENTS

TABLE OF CONTENTS	2
SPECIFICATIONS	5
Overview	5
Basic Information	5
Dimensions	5
Speed, Capacities and Weight	6
Accommodations	6
Hull and Deck Information	6
Engine Information	6
DETAILED INFORMATION	7
Accommodations	7
Exclusions	7
Disclaimer	8
PHOTOS	9
Grand Saloon Fwd STBD	9
Grand Saloon	9
Dinning	9
Grand Saloon Aft STBD	9
Down to Cabin Level	9
Master	9
Master	10
Owner's with Tub	10
Massage Room - Owner's Suite	10
Owner's with Shower	10
Sauna - Owner's Suite	10
Owner's Saloon - Owner's Suite Deck Level	10
Owner's Saloon - Owner's Suite Deck Level	11
Owners's Table and Seating	11

Compaionway forward	11
Compaionway aft	11
MISTRAL - STBD Fwd	11
MISTRAL - STBD Fwd	11
PONENTE - Port FWD	12
PONENTE - Port FWD	12
SIROCCO - Port Aft	12
SIROCCO - Port Aft	12
LEVANTE - STBD Aft	12
LEVANTE - STBD Aft	12
Galley	13
Galley	13
Double Wine Chiller	13
Pantry	13
Down to wine cellar and provisions	14
Refrigeration, Freezers and dry stores	14
Large Seating and Tables	14
Large seating and serving stations	14
STBD deck	14
Boarding Med style stairs	15
Tender 2	15
Port Side Deck and Seating	15
Tender 2	15
Starboard Boarding	16
Aft deck and mats	16
Aft Helm	16
At Anchor	16
Anchored	16
Toys	16

GA	17
CONTACTS	18
Contact details	18
Telephones	18
Office hours	18
Address	18

SPECIFICATIONS

Overview

M/S MIKHAIL S. VORONTSOV (“MSV”) now available with sincerity.

Style, Class and a Roaring 20’s Mystique sets MSV in a class of her own. Consider her uniqueness, then understand she was commissioned in 2013 by a Dutch yard well-known for excellence since 1798, Balk Shipyards, Netherlands.

Private Owner’s Suite: Located on two deck levels, you’ll find an eloquent Master w/2 full EnSite facilities, Massage Room, Sauna and Dressing Room. Up the personal stairway to the rich opulence of the large Owner’s Private Saloon, followed by large alfresco table and seating.

5 Staterooms sleeping 10, 12 w/Pullmans. 6 Crew cabins, sleeping 10 or 12.

Ship’s Systems are all top tier quality and installed by Dutch craftsman. She has been lightly used and always well maintained.

Power: Twin MTU 8V2000m72 engines provide a **range** of over 2900NM.

Sails include over 1500m² of Doyle Vectran Techpanel sails all handled by Bamar furlers and Rondal Sail Control System. The booms are custom built carbon fiber w/wood skin.

Side Boarding via Cramm Ocean Bay hydraulic Med style stairs and landing. **Stern boarding** with Multiplex passarelle.

Basic Information

Category: Motorsailor

Sub Category: Schooner

Model Year: 2013

Year Built: 2013

Refit Year: 2019

Country: France

Dimensions

LOA: 211' 9" (64.52m)

LWL: 129' 9" (39.54m)

Beam: 34' 6" (10.50m)

Min Draft: 15' 6" (4.70m)

Speed, Capacities and Weight

Cruise Speed: 12 Kts. (14 MPH)

Cruise Speed Range: 2950

Max Speed: 14 Kts. (16 MPH)

Displacement: 1261044.13864 Pounds

Gross Tonnage: 490 Pounds

Water Capacity: 2219.0452368 Gallons

Holding Tank: 1822.7871588 Gallons

Fuel Capacity: 8361.0454458 Gallons

Fuel Consumption: 79.2516156 Gallons

Accommodations

Total Cabins: 5

Total Berths: 9

Sleeps: 12

Total Heads: 6

Captain Cabin: True

Crew Cabin: 6

Crew Berths: 6

Crew Sleeps: 12

Hull and Deck Information

Hull Material: Cold Molded Mahogany

Deck Material: Teak

Hull Configuration: Long Keel

Hull Color: White

Hull Designer: Dykstra Naval Architects

Exterior Designer: Ken Freivokh Design

Interior Designer: Ken Freivokh Design

Engine Information

Engines: 2

Manufacturer: MTU

Model: 8V2000M72 722kW each

DETAILED INFORMATION

Accommodations

M/S MIKHAIL S. VORONTSOV (“MSV”) now available with sincerity.

Style, Class and a Roaring 20’s Mystique sets MSV in a class of her own. Consider her uniqueness, then understand she was commissioned in 2013 by a Dutch yard well-known for excellence since 1798, Balk Shipyards, Netherlands.

Private Owner’s Suite: Located on two deck levels, you’ll find an eloquent Master w/2 full EnSite facilities, Massage Room, Sauna and Dressing Room. Up the personal stairway to the rich opulence of the large Owner’s Private Saloon, followed by large alfresco table and seating.

5 Staterooms sleeping 10, 12 w/Pullmans. 6 Crew cabins, sleeping 10 or 12.

Ship’s Systems are all top tier quality and installed by Dutch craftsman. She has been lightly used and always well maintained.

Power: Twin MTU 8V2000m72 engines provide a **range** of over 2900NM.

Sails include over 1500m2 of Doyle Vectran Techpanel sails all handled by Bamar furlers and Rondal Sail Control System. The booms are custom built carbon fiber w/wood skin.

Side Boarding via Cramm Ocean Bay hydraulic Med style stairs and landing. **Stern boarding** with Multiplex passarelle.

Exclusions

Owner's personal belongings.

Disclaimer

The Company offers the details of this vessel or yacht in good faith but cannot guarantee or warrant the accuracy of this information nor warrant the condition of the vessel. A buyer should instruct his representatives, agents, or his surveyors, to investigate such details as the buyer desires validated. This vessel or yacht is offered subject to prior sale, price change, or withdrawal without notice.

PHOTOS

Grand Saloon



Grand Saloon Fwd STBD



Dinning



Grand Saloon Aft STBD



Down to Cabin Level



Master



Master



Owner's with Tub



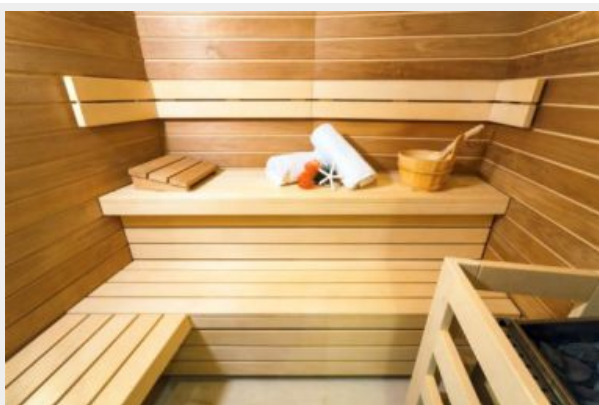
Massage Room - Owner's Suite



Owner's with Shower



Sauna - Owner's Suite



Owner's Saloon - Owner's Suite Deck Level



Owner's Saloon - Owner's Suite Deck Level



Owners's Table and Seating



Companionway forward



Companionway aft



MISTRAL - STBD Fwd



MISTRAL - STBD Fwd



PONENTE - Port FWD



PONENTE - Port FWD



SIROCCO - Port Aft



SIROCCO - Port Aft



LEVANTE - STBD Aft



LEVANTE - STBD Aft



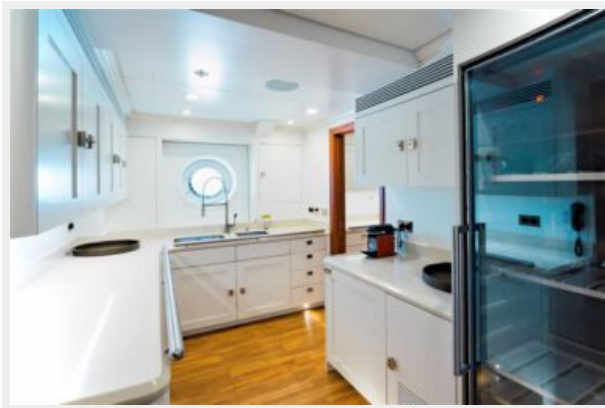
Galley



Galley



Pantry

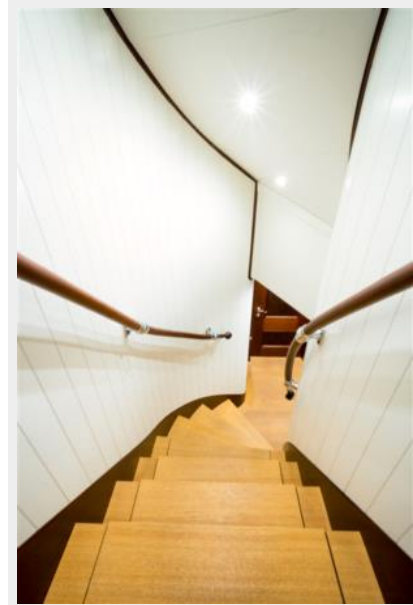


Double Wine Chiller



Down to wine cellar and provisions

Refrigeration, Freezers and dry stores



Large Seating and Tables



Large seating and serving stations



STBD deck



Boarding Med style stairs



Tender 2



Port Side Deck and Seating

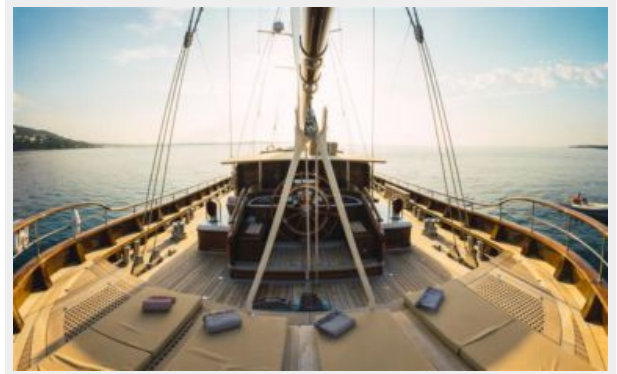
Tender 2



Starboard Boarding



Aft deck and mats



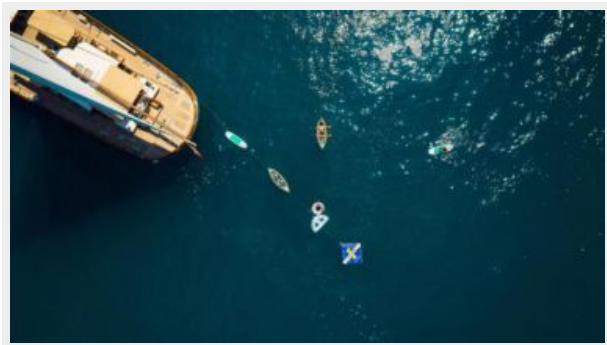
Aft Helm



At Anchor



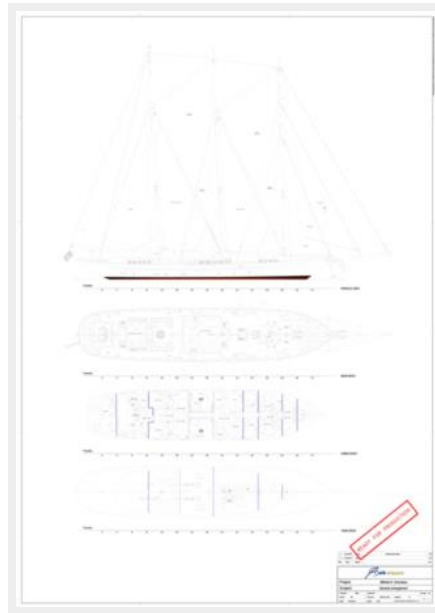
Toys



Anchored



GA



CONTACTS

Andrey Shestakov, leading yacht broker of the sales department of Shestakov Yacht Sales Inc. Shestakov Yacht Sales Inc., the official representative of the Miami/Fort Lauderdale FL headquarters.

Contact details

Email: andrey@shestakovyachtsales.com

Web: shestakovyachtsales.com/en/

Telephones

USA: +1(954)274-4435

Office hours

Monday – Saturday: **9:00 - 21:00** EDT

Sunday: **closed**

Address



Harbour Towne Marina, 850 NE 3rd St,
STE 213, Dania, FL 33004