

## INFINITY — CNB



**Судостроитель:** CNB

**Год постройки:** 2008

**Модель:** Sloop

**Цена:** **ЦЕНА ЯХТЫ ПО ЗАПРОСУ**

**Местонахождение:** Italy

**Длина общая:** 95' 2" (29.00m)

**Ширина:** 23' 0" (7.00m)

**Макс. осадка:** 11' 6" (3.50m)

**Крейс. скорость:** 9.5 Kts. (11 MPH)

**Макс. скорость:** 12 Kts. (14 MPH)

Купить **Infinity — CNB** а также выбрать подходящую вам яхту из нашего каталога яхт вам поможет опытный яхтенный брокер Андрей Шестаков. На сегодняшний день компания **Shestakov Yacht Sales Inc.** имеет большое количество яхт в собственном списке продаж, а также тесно сотрудничает со всеми крупными яхтенными производителями по всему миру.

Для того чтобы купить яхту **Infinity — CNB** а также проконсультироваться по любому вопросу связанному с покупкой, продажей, чартером яхт позвоните по телефону **+7(918)465-66-44**.

# ОГЛАВЛЕНИЕ

ОГЛАВЛЕНИЕ	2
ХАРАКТЕРИСТИКИ	4
Обзор	4
Основная информация	4
Размеры	5
Скорость, вместимость и масса	5
Размещение	5
Корпус и палуба	5
Информация о двигателе	6
ПОДРОБНОЕ ОПИСАНИЕ	7
Detailed Description	7
Исключения	16
Отказ от ответственности	17
ФОТОГРАФИИ	18
salon	18
salon-dining	18
salon-from-cockpit	18
salon-from-starboard	18
salon-from-starboard-to-aft	18
salon-starboard-seats	18
master-cabin	19
master-cabin-sofa	19
master-bathroom	19
guest-bathroom	19
twin-cabin	19
double-cabin1	19
double-cabin2	20
charts-table	20

---

galley	20
cockpit-coffee-table-side	20
cockpit-dining	20
cockpit-dining-side	20
cockpit-from-starboard	21
cockpit-to-aftdeck	21
cockpit-to-stern	21
cruising-from-cockpit	21
cruising-from-aft	21
cruising-from-wheel	21
aftdeck	22
bow	22
cruising-from-bow	22
DJI_0713	22
DJI_0734	22
DJI_0732	22
DJI_0743	23
DJI_0749	23
GA1	23
<b>КОНТАКТЫ</b>	<b>24</b>
Контактная информация	24
Телефоны	24
Время работы	24
Адрес	24

---

# ХАРАКТЕРИСТИКИ

---

## Обзор

---

No sea is too big for this custom built aluminium 95' CNB sloop. INFINITY has successfully cruised the Pacific, Caribbean, Newfoundland & Labrador, Northern Europe, the Mediterranean as well as the Arctic, and is a genuine bluewater cruising yacht with an excellent pedigree.

INFINITY is now being offered for sale after having performed a major refit which was part of a plan to prepare her for another circumnavigation, but which has now been cancelled owing to a change in the current Owner's plans. As a result she now presents in better-than-new condition, with amongst others a complete new set of sails (July 2019), brand-new generators, the application of a full paintjob (Awlgrip) as well as a full new teak deck, servicing of all major equipment and a detailed interior refurbishment. More details of the full refit are to be found elsewhere in this specification.

INFINITY is an extremely well performing cruising sailing yacht with stunning Philippe Briand lines and -naval architecture. Her 4 cabin layout offers a great deal of flexibility which makes her attractive for charter as well as family use. She is offered as a commercial registered/fully MCA compliant yacht by her current Owner so it is a case of a new Buyer simply taking the keys and sailing away on a new adventure.

Open to all serious offers, INFINITY is conveniently located in Sanremo just a stone's throw distance over the Italian border from Monaco.

---

## Основная информация

---

**Тип судна:** Sloop

**Подкатегория:** Sloop

**Модельный год:** 2008

**Год постройки:** 2008

**Год обновления:** 2019

**Страна:** Italy

## Размеры

---

**Длина общая:** 95' 2" (29.00m)

**Длина по ватерлинии:** 82' 6" (25.14m)

**Ширина:** 23' 0" (7.00m)

**Макс. осадка:** 11' 6" (3.50m)

## Скорость, вместимость и масса

---

**Крейс. скорость:** 9.5 Kts. (11 MPH)

**Крейсерская скорость поворота:** 1800 Kts.

**Дальность на крейсерской скорости:** 2900

**Макс. скорость:** 12 Kts. (14 MPH)

**Макс. скорость поворота:** 2600 Kts.

**Водоизмещение:** 176369.8096 Pounds

**Чистый вес:** 88 Pounds

**Вместимость воды:** 1849.204364 Gallons

**Объем топливного бака:** 1452.946286 Gallons

## Размещение

---

**Всего кают:** 4

**Всего коек:** 5

**Спальные места:** 8

**Всего ком. состава:** 4

**Койки экипажа:** 3

**Спальных мест экипажа:** 4

**Комм. состав экипажа:** 1

## Корпус и палуба

---

**Материал корпуса:** Aluminum

**Материал палубы:** Teak

**Дизайнер экстерьера:** Philippe Briand

**Дизайнер интерьера:** Vripack

## Информация о двигателе

---

**Двигатели:** 1

**Производитель:** Cummins

**Модель:** 6СТА 8.3М3

**Тип двигателя:** Inboard

**Тип топлива:** Diesel

# ПОДРОБНОЕ ОПИСАНИЕ

## Detailed Description

### MAIN CHARACTERISTICS

<b>TYPE</b>	Sailing Yacht
<b>RIG</b>	Sloop
<b>BUILDER</b>	CNB, France
<b>NAVAL ARCHITECT</b>	Philippe Briand
<b>EXTERIOR DESIGN</b>	Philippe Briand
<b>INTERIOR DESIGN</b>	Vripack-Yachting International Sophie Campion
<b>YEAR</b>	2008
<b>REFIT</b>	2012, 2018-19
<b>CLASSIFICATION</b>	Bureau Veritas and LY2, Built to MCA, Privately Registered Commercially Registered
<b>CONSTRUCTION</b>	Aluminium hull & superstructure, Teak decks
<b>CREW</b>	3-4
<b>FLAG</b>	Marshall Islands
<b>ENGINES</b>	1 x Cummin 6 cylinder CTA 8.3M3 350hp
<b>GT</b>	88
<b>NT</b>	26
<b>DISPLACEMENT</b>	80 MT
<b>DIMENSIONS</b>	
<b>LOA</b>	<b>29.00m/ 95'14"</b>
<b>LWL</b>	<b>25.14 m / 82'6"</b>

---

<b>BEAM</b>	<b>7.00m/ 22'97"</b>
<b>DRAFT</b>	<b>3.50m/ 11'48"</b>
<b>SPEED &amp; RANGE UNDER POWER</b>	
<b>MAXIMUM SPEED</b>	12 knots (under power) (2,600 rpm)
<b>CRUISING SPEED</b>	9.5 knots (under power) (1,800 rpm)
<b>FUEL CONSUMPTION</b>	18 L/h @ cruising speed including 1 genset
<b>RANGE</b>	2,900 nm

## CAPACITIES

<b>ACCOMMODATION</b>	8 x Guests in 4 cabins 3 x Double; 1 x Twin
<b>CREW</b>	3/4 x Crew in 2 cabins
<b>FUEL</b>	5,500 litres/1,453 US gallons
<b>FRESH WATER</b>	7,000 litres/1,849 US gallons
<b>GREY WATER</b>	400 litres / 106 US gallons
<b>BLACK WATER</b>	100 litres / 26 US gallons

## ACCOMMODATION

<b>GUEST ACCOMODATION</b>	1 x Master cabin 2 x Double cabins 1 x Twin cabin
<b>CREW ACCOMODATION</b>	1 x Captain's cabin (Double) 1 x Twin cabin

## MECHANICAL EQUIPMENT

<b>ENGINES</b>	1 x Cummin 6CTA 8.3M3 - 350 hp
----------------	--------------------------------



---

<b>ENGINE HOURS</b>	4,352 h
<b>GEARBOX</b>	Twin Disc 2,88:1
<b>PROPULSION</b>	Single screw
<b>PROPELLERS</b>	Bruntons 4 blade folding propeller
<b>RUDDER ANGLE</b>	30° to port / 30° to Starboard
<b>STEERING SYSTEM</b>	Hydraulic LECOMBLE & SCHMITT
<b>BOWTHRUSTER</b>	MaxPower R450/34-38hp retractable
<b>GENERATORS</b>	1 x Onan 27kW, 220V 50Hz (new 2019, PTO for hydraulic power) 1 x Onan 17.5kW, 220V 50Hz (new 2018, PTO for Hydraulic power added in 2019)
<b>GENERATOR HOURS</b>	260h / 1440h
<b>ELECTRICITY</b>	24V or 220V AC 50 Hz single phase
<b>SHORE POWER</b>	ASEA shore converter and Victron shore converter
<b>BATTERIES</b>	House bank 2000Ah-24V Buffer bank 115Ah-24V Emergency radio 115Ah-24V
<b>TYPE</b>	Mastervolt 2V elements
<b>MAIN ENGINE START</b>	200Ah-24V
<b>GENERATOR START</b>	Same as main engine
<b>CHARGERS</b>	3 x Mastervolt MASS 24/100 chargers
<b>CONVERTERS</b>	2x Mastervolt MASS SINE WAVE 5000W
<b>EMERGENCY</b>	1x Mastervolt MASS SINE WAVE 5000W
<b>AIR CONDITIONING</b>	95,000 BTU Frigomar unit – A/C throughout vessel
<b>WATER MAKER</b>	Sea Recovery 1200 producing 190l/h
<b>WATER SYSTEM</b>	2 x Freshwater pump Gianneschi

---

<b>TOILET SYSTEM</b>	Tecma silent flush toilets (freshwater supplied)
<b>SEWAGE SYSTEM</b>	Hamman Super Mini
<b>FUEL SEPARATOR</b>	Raccor filters
<b>SAILS &amp; RIGGING</b>	
<b>SAILS</b>	All sails are NEW in July 2019  Full spare set available at Doyle - Palma ready to be shipped world wide
<b>MAIN SAIL</b>	In-boom fully battened mainsail (Doyle)
<b>SPINNAKER</b>	Carbon spinnaker pole (stowed flush to front of mast)
<b>GENOA</b>	1 x 135% Genoa (Doyle)
<b>STAYSAIL</b>	1 x Self-tacking staysail (Doyle)
<b>INNER STAY</b>	Removable inner stay
<b>JIB</b>	Storm Jib (North)
<b>MPS</b>	1 x Asymetric MPS with snuffers & socks
<b>TRISAIL</b>	1 x Trisail (North)  Trisail mast track
<b>SPARS</b>	Upgraded carbon Hall Spar mast (tapered 80Gpa modulus)  White painted spars with hi-gloss finish
<b>RIG</b>	Sloop
<b>BOOM</b>	Hallspar carbon fibre boom with hydraulic in-boom furling mainsail  Manual mast step jack kit
<b>MAST</b>	Length 34.3m  Carbon 7/8th fractional, four spreaders mast with

discontinuous rod rigging

## **RIGGING**

Mechanical backstay lock Navtec rod rigging

## **RUNNING RIGGING**

1 x Half-length genoa halyard

2:1 Running backstays

2 x Spinnaker halyards (1 x 2:1 purchase)

1 x Half-length staysail halyard

2:1 Purchase main halyard

## **FURLING GEAR**

2 x Reckmann hydraulic RF 90 furlers

Hydraulic tensioner to staysail furler

## **WINCHES**

All blocks, tracks and winches by Harken

2 x Hydraulic Genoa winches

1 x Hydraulic mainsheet winch

1 x Hydraulic staysail sheet winch

2 x Hydraulic runners/MPS sheet/mooring line winches

2 x Hydraulic pit halyard winches

2 x Manual pit winches

1 x Four-guy / tack line winch

## **OTHER**

1 x Jib halyard and 1 x storm jib halyard

2 x Spreader lights enclosed in lower spreads

additional spotlights fitted

2 x Courtesy flag halyards

1 x boom preventer

## **NAVIGATION EQUIPMENT**

### **GYRO COMPASS**

Fluxgate Halcyon 2000 compass gyro compass

### **AUTOMATIC PILOT**

B&G type II autopilot PC at Navigation station

---

	Back-up Simrad AP70 autopilot
<b>ECHO SOUNDER</b>	2 x B&G (main and back-up)
<b>RADAR</b>	1 x Simrad 4kW X-Band / 1 x B&G 4kW X-Band
<b>AIS</b>	AIS transmitter
<b>GPS</b>	MX marine 420 high speed 12ch GPS
<b>CHART PLOTTER</b>	Transas 4000 / Simrad GD60 / B&G Vulcan 12R
<b>NAVTEX</b>	Navtex system
<b>LOG</b>	B&G Hydra pack 3000 (speed, log and depth)
<b>DISPLAY</b>	B&G multi-function displays in owner & skipper's cabin
<b>REMOTE CONTROL</b>	B&G remote wireless remote control
<b>COMPUTER</b>	Communication computer
<b>WIND INSTRUMENTS</b>	B&G
<b>SEARCHLIGHTS</b>	Handheld
<b>CAMERA(S)</b>	Spreaders and masthead
<b>MISCELLANEOUS</b>	Electronic barometer

## **COMMUNICATION EQUIPMENT**

<b>SATCOM</b>	KVH Tracvision M7 (TV) KVH Mini – VSAT broadband V7 (data and voice)
<b>VOICE &amp; DATA</b>	Iridium (voice and data) WIFI system 4G with PEPWAVE Livewire for internet source selection
<b>VHF</b>	Icom M603 VHF package VHF handset in cockpit

---

	Hand held Icom VHF ICM 1V + 220V battery charger
<b>SSB</b>	Icom M801 SSB radio
<b>INTERCOM</b>	Panasonic: PABX 6 stations (telephone/intercom)

## DECK EQUIPMENT

<b>ANCHOR WINDLASSES</b>	Lofran Hercules 3500W windlass
<b>ANCHORS</b>	CQR 81kg main anchor (120m of 16mm chain) 1 x 60kg kedge anchor
<b>SIDE BOARDING GANGWAY</b>	Carbon fibre folding gangway (topping lift controlled) 4m x 0.42m with removable stanchion guardrails
<b>AWNINGS</b>	Hard top and aft deck sun awning
<b>COVERS</b>	Tenders and helm stations (new 2019)

## ENTERTAINMENT EQUIPMENT

- TV in each cabin including Salon with 1 x Denon amplifier and 4 x Bower & Wilkins speakers
- Satellite receivers
- IPTV
- Audio system for outside with 6 x speakers and 1 x Denon amplifier
- Apple AirPlay for salon and outside

## GALLEY & LAUNDRY EQUIPMENT

### GALLEY

- Bosch electric ventilation hood
- Bosch microwave oven
- Miele electric oven (2019)

- Electrolux induction cooktop (2019)

## REFRIGERATION

- 2 x Double door stainless steel fridge and freezer chests
- Large internal sliding wire drawers
- Dedicated drinks fridge in the saloon
- U-Line 95 ice-maker in the saloon
- Waeco cockpit fridge within cockpit table

## LAUNDRY

- Miele washing machine and tumble dryer in lazarette

## SECURITY & SAFETY EQUIPMENT

### SAFETY & SECURITY

All MCA code equipment

- 3 x 10 person Zodiac life rafts
- 2 x EPIRB
- 4 x PLBS
- Class compliant flair kits
- 2 x Rope launchers
- Solas compliant grab bag
- 12 x Worm climate abandonment suits
- Hand held survival water maker
- SART
- 2 x GMDSS VHF's

## FIRE FIGHTING

- 24v Giannetti & Ramacotti ACB 131 pump in engine room
- Fire / bilge pump main engine driven
- Supplies the fire circuit running from the lazarette to the forepeak
- 2 x 15m fire hoses, 2 x connections (bow & stern)
- 12 x portable fire extinguishers throughout the yacht

- Smoke & heat detectors in cabins, galley and engine room
- FM200 gas full flood system for the engine room
- Dedicated engine room extractor (3,400 m3/h)

## TENDERS & WATERSPORTS EQUIPMENT

### TENDERS

- Novurania 40HP Yamaha (2019)

### WATER SPORTS

- 2 x Inflatable paddleboards
- Wake board

### DIVING

- Bauer diver compressor

## COMMENTS

No sea is too big for this custom built aluminium 95' CNB sloop. INFINITY has successfully cruised the Pacific, Caribbean, Newfoundland & Labrador, Northern Europe, the Mediterranean as well as the Arctic, and is a genuine bluewater cruising yacht with an excellent pedigree.

INFINITY is now being offered for sale after having performed a major refit which was part of a plan to prepare her for another circumnavigation, but which has now been cancelled owing to a change in the current Owner's plans. As a result she now presents in better-than-new condition, with amongst others a complete new set of sails (July 2019), brand-new generators, the application of a full paintjob (Awlgrip) as well as a full new teak deck, servicing of all major equipment and a detailed interior refurbishment. More details of the full refit are to be found elsewhere in this specification.

INFINITY is an extremely well performing cruising sailing yacht with stunning Philippe Briand lines and - naval architecture. Her 4 cabin layout offers a great deal of flexibility which makes her attractive for charter as well as family use. She is currently offered in BV class as a privately

registered vessel, however has been built to comply with MCA. It really is a case of a new Buyer simply taking the keys and sailing away on a new adventure.

Open to all serious offers, INFINITY is conveniently located in Sanremo just a stone's throw distance over the Italian border from Monaco.

## REFIT NOTES

### IN WINTER 2018 / 2019

- Full re-spray hull and deck (Awlgrip)
- Replacement complete teak deck
- Mast un-stepped, inspected, serviced, re-spayed, re-stepped
- New generators
- Addition of a back-up PTO on the auxiliary generator
- New engine and full service of Tender
- Addition of a complete back-up B&G navigation system (handsfree chart plotter, wind sensor, depth sensor, speed sensor, GPS, repeaters).
- Addition of a back-up autopilot Simrad AP70
- Respray of all interior varnish from high gloss to matt
- Replace all mattresses
- New sails installed in July 2019 (Main sail, genoa, jib)
- All winches inspected and serviced
- Windlass serviced and motor replaced
- All deck lockers blasted and recoated with epoxy paint
- All deck hatches windows replaced with hardened glass
- All interior leather renewed
- All exterior deck cousins and covers renewed
- Full service of the main-engine
- Propeller shaft pulled, bearing and seal replaced
- Service of propeller
- Class survey passed
- Commercial compliant survey passed July 2019
- All LSA serviced / renewed 2019

## Исключения

При продаже яхты исключаются личные вещи владельца.



## Отказ от ответственности

---

Компания предоставляет описание судна или яхты добросовестно, но не может гарантировать точность этой информации, а также не ручается за техническое состояние. Покупатель должен проинструктировать своих агентов или оценщиков исследовать представленную информацию более подробно, по собственному желанию. Продажа судна или яхты, изменение цены или снятие с продажи будет происходить без предварительного уведомления.

# ФОТОГРАФИИ

salon



salon-dining



salon-from-cockpit



salon-from-starboard



salon-from-starboard-to-aft



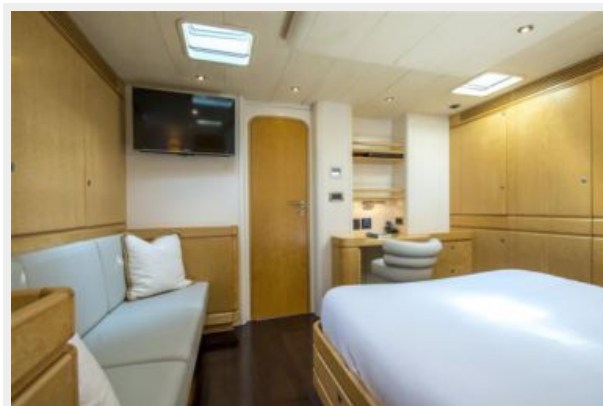
salon-starboard-seats



**master-cabin**



**master-cabin-sofa**



**master-bathroom**



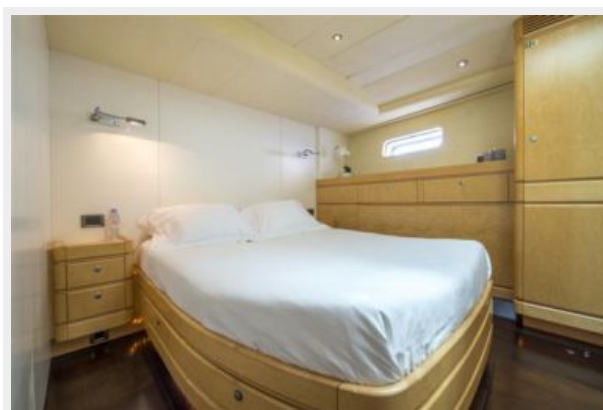
**guest-bathroom**



**twin-cabin**



**double-cabin1**



**double-cabin2**



**charts-table**



**galley**



**cockpit-coffee-table-side**



**cockpit-dining**



**cockpit-dining-side**



**cockpit-from-starboard**



**cockpit-to-aftdeck**



**cockpit-to-stern**



**cruising-from-cockpit**



**cruising-from-aft**



**cruising-from-wheel**



**aftdeck**



**bow**



**cruising-from-bow**



**DJI\_0713**



**DJI\_0734**



**DJI\_0732**



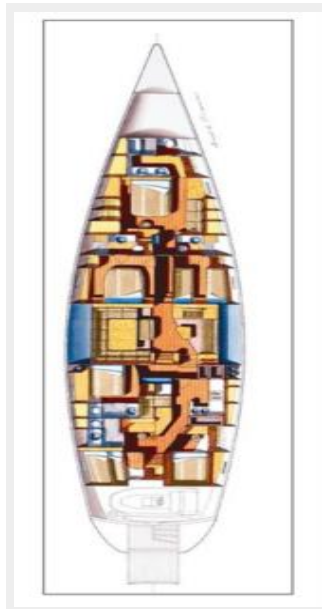
DJI\_0743



DJI\_0749



GA1



# КОНТАКТЫ

---

Андрей Шестаков (Andrey Shestakov) – ведущий яхтенный брокер отдела продаж яхт и судов компании Shestakov Yacht Sales Inc. Официальный представитель Shestakov Yacht Sales Inc. для русскоговорящих клиентов в центральном офисе компании в Майами/Форт Лодердейл/Флорида/США.

## Контактная информация

---

Email: [andrey@shestakovyachtsales.com](mailto:andrey@shestakovyachtsales.com)

Web: [shestakovyachtsales.com](http://shestakovyachtsales.com)

## Телефоны

---

Краснодарский край: **+7(918)465-66-44**

США, Майами, Флорида: **+1(954)274-4435**

## Время работы

---

Понедельник – Суббота: **9:00 - 21:00**  
EDT

Воскресенье: **Закрето**

## Адрес

---



Harbour Towne Marina, 850 NE 3rd St,  
STE 213, Dania, FL 33004