

CLEAR EYES — PAX NAVI / OZHAN MOBILYA



Судостроитель:

Pax Navi / Ozhan Mobilya

Год постройки: 2010

Модель: Крейсерский кеч

Цена: **ЦЕНА ЯХТЫ ПО ЗАПРОСУ**

Местонахождение: Turkey

Длина общая: 144' 0" (43.89m)

Ширина: 30' 0" (9.14m)

Макс. осадка: 13' 0" (3.96m)

Крейс. скорость: 10 Kts. (12 MPH)

Макс. скорость: 13 Kts. (15 MPH)

Купить **CLEAR EYES — Pax Navi / Ozhan Mobilya** а также выбрать подходящую вам яхту из нашего каталога яхт вам поможет опытный яхтенный брокер Андрей Шестаков. На сегодняшний день компания **Shestakov Yacht Sales Inc.** имеет большое количество яхт в собственном списке продаж, а также тесно сотрудничает со всеми крупными яхтенными производителями по всему миру.

Для того чтобы купить яхту **CLEAR EYES — Pax Navi / Ozhan Mobilya** а также проконсультироваться по любому вопросу связанному с покупкой, продажей, чартером яхт позвоните по телефону **+7(918)465-66-44**.

ОГЛАВЛЕНИЕ

ОГЛАВЛЕНИЕ	2
ХАРАКТЕРИСТИКИ	3
Обзор	3
Основная информация	3
Размеры	4
Скорость, вместимость и масса	4
Размещение	4
Корпус и палуба	4
Информация о двигателе	5
ПОДРОБНОЕ ОПИСАНИЕ	6
Overview	6
2019-2020 Winter Maintenance/10 Year ABS Details	6
Specifications	10
Исключения	15
Отказ от ответственности	15
ФОТОГРАФИИ	16
КОНТАКТЫ	25
Контактная информация	25
Телефоны	25
Время работы	25
Адрес	25

ХАРАКТЕРИСТИКИ

Обзор

10 Year ABS Class Survey Completed + Full Repaint of the Hull in 2020.

The spacious interior of CLEAR EYES accommodates 10 guests in five staterooms. The full beam master is situated back aft and encompasses a king size bed, seating areas and a marble en suite bathroom. Forward of the master are two twin staterooms with single beds, these staterooms are tastefully decorated and very spacious, each with TV / entertainment system and internet. Midships is the versatile VIP stateroom, there is the option of one full beam VIP with queen size bed, large lounging area and his and hers bathrooms or using the partition wall to create two doubles both with queen sized beds and en suites. The main saloon is divided into four sections. Seating to port and a dining table set for eight to starboard take up the aft area. All freestanding furniture is Swiss and gold painted, and bright, daring upholstery in deep pinks, greens and oranges abounds, contrasting with a light brown deck head and moquette. The aft deck offers a huge sunbathing area with an integrated spa pool, alfresco dining and a little bar around the captain's helm station. The top deck is exclusively for sunbathing and relaxing. The front deck carries toys like Seabobs and jet skis, and has two very intimate crescent-shaped seats.

CLEAR EYES is a classic Bodrum Gulet design as a fast cruising ketch. Her hull & superstructure are steel with the superstructure covered with varnished African mahogany. She is an extremely comfortable yacht when underway much in part due to her large volume coming in at 277 gross tons.

CLEAR EYES benefits from the original owner & captain since new to assure seamless maintenance program since her launch. This winter season she will be completing her ABS 10 year class survey.

Timeless design and elegant interior decor.

Excellent value when comparing price per gross ton.

Основная информация

Тип судна: Крейсерский кеч

Модельный год: 2010

Год постройки: 2010

Год обновления: 2020

Вид обновления: ABS 10 Year Class Survey & Paint

Страна: Turkey

Размеры

Длина общая: 144' 0" (43.89m)

Длина по ватерлинии: 118' 0" (35.97m)

Ширина: 30' 0" (9.14m)

Макс. осадка: 13' 0" (3.96m)

Трапы: 147' 8" (45.01m)

Скорость, вместимость и масса

Крейс. скорость: 10 Kts. (12 MPH)

Дальность на крейсерской скорости:
3510

Макс. скорость: 13 Kts. (15 MPH)

Водоизмещение: 700849.530898 Pounds

Чистый вес: 277 Pounds

Вместимость воды: 1595.59919408
Gallons

Объем топливного бака: 6834.13098524
Gallons

Размещение

Всего кают: 5

Спальные места: 12

Всего ком. состава: 6

Каюта капитана: Да

Каюты экипажа: 5

Спальных мест экипажа: 8

Корпус и палуба

Материал корпуса: Steel

Материал палубы: Teak and Steel

Цвет корпуса: White

Дизайнер корпуса: PAX NAVI YACHTS

Дизайнер экстерьера: Erkin Yagci

Дизайнер интерьера: Erkin Yagci

Информация о двигателе

Двигатели: 2

Производитель: CAT

Модель: C18

Тип двигателя: Inboard

Тип топлива: Diesel

ПОДРОБНОЕ ОПИСАНИЕ

Overview

CLEAR EYES is a classic Bodrum Gulet design as a fast cruising ketch. Her hull & superstructure are steel with the superstructure covered with varnished African mahogany. She is an extremely comfortable yacht when underway much in part due to her large volume coming in at 277 gross tons.

CLEAR EYES sleeps 12 guests in 5 staterooms a spacious master cabin back aft, two twin cabins, and 2 large VIPs + crew accommodations for 8 with private entrance.

CLEAR EYES benefits from the original owner & captain since new to assure seamless maintenance program since her launch.

Timeless design and elegant interior decor.

Excellent value when comparing price per gross ton.

This past off season CLEAR EYES had her hull repainted & completed her 10 Year ABS Class Survey. Further details of the exact work completed is available upon request.

She shows in new condition.

2019-2020 Winter Maintenance/10 Year ABS Details

Deck Section

Antifouling

Deck varnish

Interior varnish touchups

Mast and booms paint touchups

Deck crains touch up

Paserelle uninstall and repair the broken piece and maintenance

Sails repairs install wash

Tender No 3 annual service

Tender No 3 Jel coat-Sandblasting-Tube Repair-Paint

Jet Ski annual service

SuperJet annual service

Inox works

Anchor plate polish

Expending materials

Various upholstery works

Teak works on deck

Life-saving and fire fighting appliances maintenance and certification

Dauids maintenance And Battery change

Neccecery sika works

Nautical publications and chart updates

Water Sports Equipment Renewal

New Flags x15

Lazy Bags Renewal or Repair

Necessary Lighting Items

Galley All Pipes renewal

Anode Plates

Port Baggages

Port Alongside Foot Rail Repair

Foil Coating for vernish

Side ladder Paint Touchup And Teac Repair

Crains-Front Seats-Hatches Rust Off And Paint

Crain Usage For Winter Works

Navigation Lamps

Fender Covers

New Moving Camera

Camera New joystick

Anchor Lighting

Skaflex Jobs After Film Covering

Inox Works 3

Engineering Section

Main engines annual maintenance (Cooler, heat exchanger, turbo, injectors, circulation pump, seawater, gearbox cooler, and filter)

Yanmar maintenance (Cooler, fuel pump, hydraulic pump, turbo)

Generators overhaul (pump, injectors, circulation pump, coolers, alternator)

Watermakers maintenance (replacement if necessary)

Air con system All Change

All electrical motors maintenance such as rudder motors, freshwater pumps

Fridges maint.(evac clean, drier replace, gas checks) New Water pump x2

Evac / Hamann system maintenance

Piping works and checks

Tank & bilge sensors maintenance

Water tanks scrapping and paint

Fuel Tanks Cleaning

Replacing Batteries 2V 1000amp

Chargers For Battery x4

Invertors 2 unit x 8kw

Circuits/Electric Fuses

Generator Wedges

Windlass steering and brakes maintenance

Galley Tank/ Pipes/ Electrical Valf

Emergency Fire pump maintenance

Hydraulic Tank x2 For Crains

David Power Circuit

Water Maker Maintenance Section 2

Interior Section

Bilge paint

Saloon carpet and cabin ceiling replacement and necessary wash

Galley and laundry and bar equipment

Crew Bedrooms Maintenance

Galley Fan Maintenance And Cleaning

Carpenter Works

Table Clothes And Accessories

Bed Covers And Towels And Needed Bed

Wash And Dry Machine Maintenance

Parquet Installation For Bar-Crew Cabins- Crew Hall

Closet Covers x9 Varnish

Iron Table And Cover

Additional Section

Emergency Fire Dampers for Abs Request

Cabin Lighting Dimmer set replay parts

Port Crain Maintenance and Necessary parts

Stbd Crain Maintenance and Necessary parts

Hydraulic Steering System Maintenance and Necessary Parts

Small Items Needed To Be Paint

Alfa Laval Fuel Separator Maintenance

Cabin Bathroom Panels Maintenance

Internet System Renewal

Main Engine Exhaust Covers Renewal

Fender Covers Leader & Cotton Renewal RENEWAL

Deck Winches Maintenance

Small Items Needed to be Paint 2

Main Tender Tube Replacement and Gelcoat Repair Antifouling WINDLASS REPAIR

Lighting and Electrical Equipment

All Hydraulic Control Units Maintenance

Main Valves Maintenance and Sandblasting

Shaft and Propeller Uninstallation for ABS 10 Year Survey Request

Tool Bench Renewal for Engine Room

Piping Works and Checks 2

Main Tender Engine Service- All Hydraulic and Fuel pipe Change

Yanmar Engine Starter and Charge Dynamo Maintenance for ABS Request

Main Engines Starter and Charge Dynamo Maintenance for ABS Request

Specifications

- Number of Guests 10
- Number of Cabins 5
- Cabin Configuration 3 Double, 2 Twin
- Bed Configuration 1 King, 2 Queen, 4 Single
- Engines Main engines: 2 x 670 hp CAT C18
- Generators: 2 x tri-phase 50-Hz generators
- Cruising Speed: 10 knots
- Fuel Consumption: 150 Litres/Hr
- Fuel capacity: 25.870Ltr
- Water capacity: 6040Ltr
- Fuel consumption: 100L/hour/ engine at cruising speed of 10 kts and 1400 RPM
- Speed: Depending upon the wind speed and the apparent angle of the wind. 13,5 kts maximum at 2100 RPM. 9 kts cruising
- Range: Maximum range of 3510 nautical miles @ 1500 RPM with 2 engines at 10 kn.
NOTE: 10% reserve calculated.

- Engines: 2 x CAT 671 HP each @ 2100 RPM.
- Engine hours: 5398 hrs Stb, 5440 hrs Port
- Transmissions: Twindisc 3:48/1
- Propellers: 2 x five blade propeller
- Bow thruster: 1x100hp 240 hp Yanmar engine for independent hydraulic system 130 hrs
- Steering: Hydraulic via double cylinder system from Data

Generators & Electricity

- Generators: 2 x 69KW CAT
- Generator hours: 13011 hrs port, 13068 hrs Stb
- Electricity: Onboard A.C. power is 380V 50 Cycles with the following Additional voltages: 220V single phase 50 Hz, 24V AC/DC Emergency and Electronics and for Navigation 12/24 volt.
- Shore power: Three Phase 380V
- Batteries: For main engine and generator starting, emergency, lighting, Electronics, (Separate system for navigation equipments and VHF system, 24 Volt service circuit. Batteries are charged via Vctron Energy battery chargers (Combi) Air conditioning: Frigomar 4x78000 BTU Central System **Other Machinery** Refrigeration: Frigomar, 10 big size, 4 small size refrigerator. 2x700lt freezer, 4x1600lt fridge, 2x 500 bottles wine cooling
- Watermakers: 2x Sea Recovery Aquawhisper 1800-2 (2x500lt per hour) 4190 and 3971 hrs
- Hot water heaters: 2x300lt G&R stainless steel
- Bilge Water treatment: Separ Nelson Bilge Boy
- Toilets: Vacuum Type Evac
- Waste water treatment: Hamann Mini L Frame 5322lt/day
- Diving gear: Drager 3 tubes
- 2 Furling (Reckmann)
- Bow thruster (American Bowthruster)
- 2x Lewmar Captive Winches
- 9x Self tailing Lewmar Winches
- Opacmare Boarding Ladder
- Opacmare Pasarelle
- Opacmare Deck Crane x 2
- Windlass x 2 (Data)
- Rudder (Data)
- Monitoring system
- Sat phone, Fax & TV
- Kahlenberg Horn with two automatic control panel (M-511CD Whistle Control)
- Passerelle, davits, windlass have remote control.
- Jacuzzi on the aft deck
- Kärcher high pressure cleaner
- Extensive Tool Box & work bench
- Hp Printer, scanner, Fax, Copy

- PC and PC Network
- Internet connection via satellite and GSM
- Multimedia Network System
- Air Horn - Kahlenberg T2
- Search Lights -2x Sunshin
- Underwater Lights-14x Cantalupi
- Apple TV in the saloon

Rigger

- Formula Marine

Mast material

- Aluminum

Mast heights over deck

- 40m Main, 32m Mizzen

Sails

- UK-Halsey

Asymmetric balloon

- 712sqm

Genoa sail

- 296sqm

Stay sail

- 157sqm

Main sail

- 227sqm
- Mizzen sail:
- 130sqm
- Total sailarea:
- 810sqm
- Deck hardware:
- 2x Lewmar Hydraulic Captive Winches
- 4 x Lewmar hydraulic mast winches
- 3 x Lewmar hydraulic, 1x Lewmar manual Mizzen Winches
- 2 x Lewmar hydraulic capstans

- 2 x Reckmann furling winches
- Holmatro Boom Vang
- Holmatro Backstay Cylinders
- Nitronic 50 Rod Standing Rigging
- Hydra-Net-Radial Cut (spectra) Off Shore Cruising Sails

General

The basic concept of Clear Eyes is derived from the mega yacht standards of today's owners and charterers. One basic criterion is the separation of the guest and owner area from the crew - not only for the accommodation but especially for the non-sailing operation of the yacht. This is a unique point of Clear Eyes which will be appreciated of course by the owner and his guests but from the crew, too. A second unique feature is the enormous volume provided due to the hull shape of a long keeler. Also motor yacht enthusiastic visitors will appreciate the space available on Clear Eyes compared to other sailing yachts.

Owner and Guest

Guest approach Clear Eyes either on the aft gangway or through the starboard bathing ladder. Both accesses are fully retractable into the hull of the yacht. The guests will step into the ship through the saloon door and will find a spacious central saloon accommodating a dining area, living area, pantry for the service and a separated helm station for the captain. The saloon itself is spacious and a silk varnish of mahogany sets the tone of the timeless and luxury crafted woodwork. The colors of the saloon are determined by the loose furniture. On starboard a unique golden dining table for ten welcomes the guest and on port side a beautiful seating arrangement with colorful silk fabrics invites to relax. Even from the low seating point of the couch arrangement the guests will enjoy full visibility of the sea and not only the horizon. The pantry and the helm station are separated through the building furniture and it is note worthy that all furniture are not pre-manufactured but inbuilt work is the craftsmen standard of the yacht.

Guest and owner are accommodated in five cabins – three in the aft and two located mid-ship. A highlight of CLEAR EYES is the possibility to arrange two locations for a master arrangement or both at the same time. The classic and romantic one is located in the aft of the yacht; the second possibility is the combination of two guest rooms into one very sizable master arrangement at mid-ship. The two guest cabins in the aft are twin-bed arrangements, the mid-ship cabins are double beds whereas one can be re-arranged as a couch to be used in a possible master arrangement opening the sliding door to the attached second guest room. All cabins have an individual style of fabrics pleasing the eye of the connoisseur who will find that the onyx and marble of the bathroom matches the colors of the cabin. All cabins have sizable bathrooms – three of them are equipped with a double-shower arrangement. The master arrangement enjoys a his and her bathroom and the showers are throughout the ship equipped with modern LED light effects during showering. A marvelous experience to start or to end a relaxing day!

All cabins are equipped with state-of-the-art TV, entertainment, communication and internet equipment. Wireless is the standard and guests are welcomed to bring their I-Pod. Guests can

choose films from the huge server library of the yacht – all can enjoy watching their dia shows of the photographs taken during the day or just follow the route of the ship. The TV of the main saloon allows operating the mast camera to check out beaches miles away.

Deck Area

CLEAR EYES provides three deck areas: the aft deck provides a huge lay-down area with an integrated whirlpool and the area is organized to be serviced from all sides.

The al fresco dining arrangement allows comfortable seating for all guests and the dining table consist of three pieces which allow an easy configuration of two separate tables for better use during sailing. The fly bridge and helm station of the captain are surrounded by a bar arrangement allowing to watch the captain and enjoy a drink at the same time. All three areas of the aft deck are protected by a sun tent which can easily be secured for sailing.

The sleek design lines of CLEAR EYES allow a full visibility from the aft deck over the main deck. This deck provides a huge sunbathing area and can also be partly protected through a tent arrangement fixed to the main boom.

The front deck carries the toys and tenders of CLEAR EYES whereas the top front part provides two intimate seating arrangements where guests can enjoy the elements of wind and water or just the sunset. All deck equipment like gangway, davits, bathing ladder, cranes and captive winches are completely integrated in the superstructure clad with mahogany and teak.

CLEAR EYES carries an impressive set of tenders and toys for the pleasure of the guests. Beside the standard crew tender CLEAR EYES carries a 6.5 m guest tender powered by a 250 hp Mercury, a 250 hp Sea-doo Jet Ski, Yamaha Stand Up Jet Ski and 5 hp Sea bob x 2 for diving up to 40 meters extend the flexibility of the guests. A variety of water skis and towing toys up to a trampoline are available for the kids on board.

- Tender 250 hp Mercury Verado
- Tender 3.5m AB with new 30hp outboard
- Yamaha superjet
- 1 x Jetski Seadoo RXP 300hp, 2 seater
- 2 x Sea Bob 5hp (diving up to 40 meters)
- Laser Dinghy Pico Plus
- 1 x KT Surfing Drifter Pro 5.5
- 2 x pairs of adult waterskis
- 1 x Monoski
- 3 x wakeboards
- 1 x Knee board
- 1 x Paddleboard
- 1 x Trampoline
- 1 x inflatable kayak
- 1 x inflatable Viper
- 1 x Human inflatable ball

- Snorkelling gear
- Jacuzzi (shallow)

Crew

The crew of eight has its own department with two entrances – one from the belly aisle of the yacht and one from the front deck. The crew sleeps in four cabins with two bathrooms for the crew and the captain with his own en suite. One of the crew cabins could be extended with an extra bed for three. The crew department is at the same time hosting the laundry and ironing equipment. The crew department gives also access to one of the storage areas in the bilge for the diving equipment and another bilge compartment stores the big balloon sail which is directly hoisted from the storage area to the main mast.

Not only the crew department but also the crews' working area is completely separated from the guests - a feature which is only seen on very large sailing yachts or on big motor yachts. The solution of this arrangement is provided by the hull shape of a long keeler which allows a third deck level used as a belly aisle and storage area underneath the front guest cabins. The aisle connects the crew department with the galley and crew mess. At the same time the aisle is used as a massive refrigeration, freezer and wine cellar compartment allowing independence of several weeks underway.

The crew itself enjoys a very comfortable crew mess seating six crew members opposite the yachts galley which is build to the highest industrial standards for professional chefs. The lower deck arrangement features several sliding doors to assure no fumes or noises reach the main deck and its guests. Even so it is the crews' operation area including a highly sophisticated engine room every guest touring around will be amazed to which standards the yacht is built.

Исключения

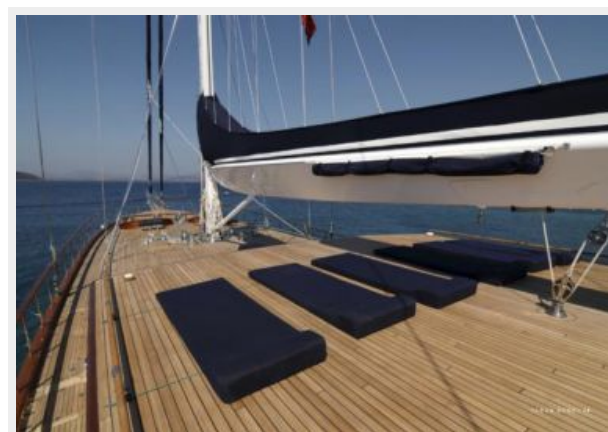
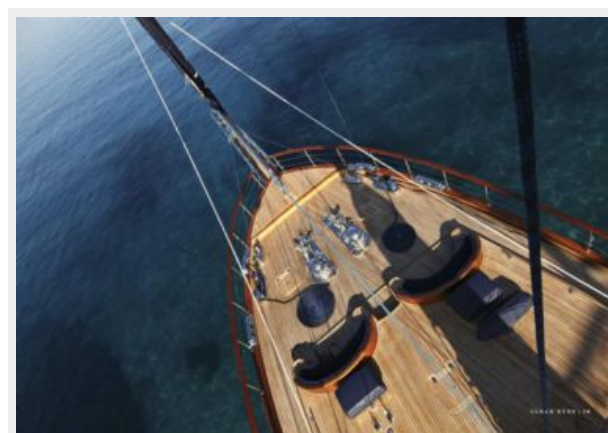
При продаже яхты исключаются личные вещи владельца.

Отказ от ответственности

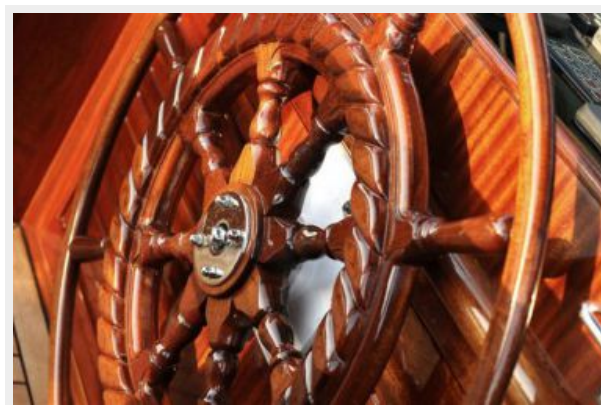
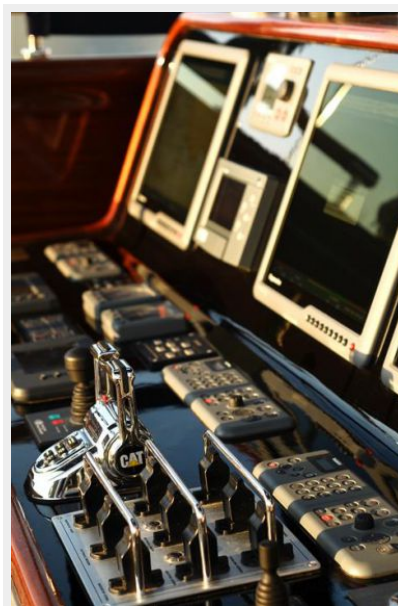
Компания предоставляет описание судна или яхты добросовестно, но не может гарантировать точность этой информации, а также не ручается за техническое состояние. Покупатель должен проинструктировать своих агентов или оценщиков исследовать представленную информацию более подробно, по собственному желанию. Продажа судна или яхты, изменение цены или снятие с продажи будет происходить без предварительного уведомления.

ФОТОГРАФИИ





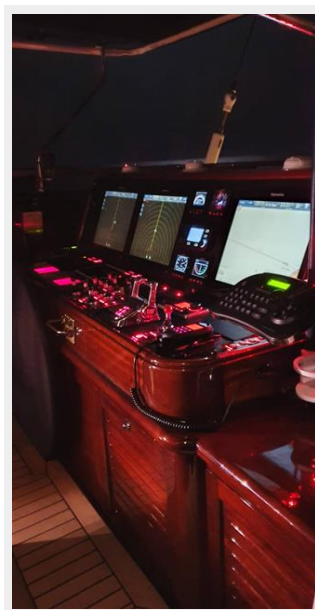














КОНТАКТЫ

Андрей Шестаков (Andrey Shestakov) – ведущий яхтенный брокер отдела продаж яхт и судов компании Shestakov Yacht Sales Inc. Официальный представитель Shestakov Yacht Sales Inc. для русскоговорящих клиентов в центральном офисе компании в Майами/Форт Лодердейл/Флорида/США.

Контактная информация

Email: andrey@shestakovyachtsales.com

Web: shestakovyachtsales.com

Телефоны

Краснодарский край: **+7(918)465-66-44**

США, Майами, Флорида: **+1(954)274-4435**

Время работы

Понедельник – Суббота: **9:00 - 21:00**
EDT

Воскресенье: **Закрето**

Адрес



Harbour Towne Marina, 850 NE 3rd St,
STE 213, Dania, FL 33004