

NAN SEA D — MAINSHIP



Builder: MAINSHIP

Year Built: 2004

Model: Trawler

Price: PRICE ON APPLICATION

Location: United States

LOA: 40' 0" (12.19m)

Beam: 14' 2" (4.32m)

Min Draft: 3' 8" (1.12m)

Max Draft: 3' 8" (1.12m)

Cruise Speed: 8 Kts. (9 MPH)

Max Speed: 15 Kts. (17 MPH)

Our experienced yacht broker, Andrey Shestakov, will help you choose and buy a yacht that best suits your needs **Nan Sea D — MAINSHIP** from our catalogue. Presently, at Shestakov Yacht Sales Inc., we have a wide variety of yachts available on our sale's list. We also work in close contact with all the big yacht manufacturers from all over the world.

If you would like to buy a yacht **Nan Sea D — MAINSHIP** or would like help answering any questions concerning purchasing, selling or chartering a yacht, please call **+1(954)274-4435**

TABLE OF CONTENTS

TABLE OF CONTENTS	2
SPECIFICATIONS	4
Overview	4
Basic Information	4
Dimensions	4
Speed, Capacities and Weight	4
Accommodations	5
Hull and Deck Information	5
Engine Information	5
DETAILED INFORMATION	6
Main Description	6
MAINSHIP 400 WALKTHROUGH	6
MAINSHIP 400 ACCOMODATIONS	6
MAINSHIP 400 SALON AND DINING	6
MAINSHIP 400 GALLEY	7
MAINSHIP 400 MASTER STATEROOM	7
MAINSHIP 400 GUEST STATEROOM	7
MAINSHIP 400 HEAD	7
MAINSHIP 400 FLYBRIDGE	7
MAINSHIP 400 AUDIO/VISUAL EQUIPMENT	8
MAINSHIP 400 ELECTRONICS	8
MAINSHIP 400 ELECTRICAL SYSTEM	8
MAINSHIP 400 ENGINE/MECHANICAL EQUIPMENT	8
MAINSHIP 400 DECK EQUIPMENT	8
MAINSHIP 400 TENDER	8
MAINSHIP 400 SAFETY AND FIRE EQUIPMENT	8
MAINSHIP 400 EXCLUSIONS	8
Disclaimer	9

Exclusions	9
Disclaimer	9
PHOTOS	10
CONTACTS	19
Contact details	19
Telephones	19
Office hours	19
Address	19

SPECIFICATIONS

Overview

!!!!Price Reduction!!!!Nan Sea D is a single owner, highly desirable and hard to find single Caterpillar 3126 **Diesel** engine with only 603 hours. She has a full keel protecting the shaft, prop and rudder. She has a spacious fly bridge accessed by a molded stairway. Her 360 walk around deck makes for safe convenient line handling docking and going through locks. The fly bridge includes a full Eisenglass enclosure with sink storage on open aft deck, two tables and plenty of seating for entertaining. She is a perfect cruising and Great Loop boat offering comfort, fuel friendly trawler speed and the option to go fast. She is fully equipped to include bow thruster, 8kw Kohler diesel generator. The dinghy is a 9' AB RIB w/9.9 Merc 4 stroke outboard secured by Sea Wise system on the swim platform for simple launching.

Basic Information

Category: Trawler

Model Year: 2004

Year Built: 2004

Country: United States

Dimensions

LOA: 40' 0" (12.19m)

Beam: 14' 2" (4.32m)

Min Draft: 3' 8" (1.12m)

Max Draft: 3' 8" (1.12m)

Clearance: 14' 0" (4.27m)

Speed, Capacities and Weight

Cruise Speed: 8 Kts. (9 MPH)

Max Speed: 15 Kts. (17 MPH)

Water Capacity: 130 Gallons

Holding Tank: 47 Gallons

Fuel Capacity: 300 Gallons

Accommodations

Total Cabins: 2

Total Heads: 1

Hull and Deck Information

Hull Material: Fiberglass

Engine Information

Engines: 1

Manufacturer: Caterpillar

Model: 3126

Engine Type: Inboard

Fuel Type: Diesel

DETAILED INFORMATION

Main Description

Nan Sea D is a single owner, highly desirable and hard to find single Caterpillar 3126 **Diesel** engine with only 603 hours. She has a full keel protecting the shaft, prop and rudder. She has a spacious fly bridge accessed by a molded stairway. Her 360 walk around deck makes for safe convenient line handling docking and going through locks. The fly bridge includes a full Eisenglass enclosure with sink storage on open aft deck, two tables and plenty of seating for entertaining. She is a perfect cruising and Great Loop boat offering comfort, fuel friendly trawler speed and the option to go fast. She is fully equipped to include bow thruster, 8kw Kohler diesel generator. The dinghy is a 9' AB RIB w/9.9 Merc 4 stroke outboard secured by Sea Wise system on the swim platform for simple launching. More pictures to follow soon.

MAINSHIP 400 WALKTHROUGH

Entering into the aft cockpit, molded fiberglass stairs lead to the spacious flybridge offering centerline helm and generous seating for guests. From the aft cockpit enter the salon/galley area through double hinged tempered glass doors with screens. The galley is to starboard with refrigerator/freezer, electric stove with oven, double sink and storage above and below the solid surface fiddled countertop. The salon is to port with a free-standing sofa and dinette forward. The helm is starboard with an adjacent sliding door for quick efficient access to the walkaround deck. A few steps down and forward, the guest stateroom with two single berths is to port. These steps lift to reveal a Splendide 2000s combination Washer/Dryer. The head with large separate stall shower is starboard with access from the companionway and the master stateroom via separate doors. The master stateroom is in the bow with a centerline berth and storage cabinetry.

MAINSHIP 400 ACCOMODATIONS

Nan Sea D offers a master stateroom forward with centerline queen berth and direct access to the head. Two single berths are located in the port side guest stateroom.

MAINSHIP 400 SALON AND DINING

Entering from the aft cockpit, the salon is to port with the dinette forward of the salon seating area. Port side leatherette upholstered sofa (6'6") Port side cherry dinette table (48"x 27") with bench seating and chairs Large sliding/screened windows port and starboard Opening center windshield Hinged double tempered glass doors (with screen) create full opening from aft cockpit to salon/galley Starboard door at helm (with screen) leads to the generous walkaround deck Valances Venetian blinds Engine room access through teak and holly sole Head room in salon is 6'6" Paste this link into your browser for a 360 view of the salon and galley:

MAINSHIP 400 GALLEY

The galley is located to starboard just forward of the aft cockpit. A 6 cu ft ac/dc Nova Kool refrigerator/freezer Three burner Princess electric cooktop and oven Built in GE Turntable Microwave Oven Black and Decker SpaceMaker Coffee Maker in it's own recessed nook. Stainless steel double sink L-shaped, fiddled Corian counter top Cherry cabinets and drawers

MAINSHIP 400 MASTER STATEROOM

The master stateroom is located in the bow. Centerline queen berth Drawers below berth Cherry cabinetry port and starboard with hanging lockers Opening/screened port lights port and starboard Opening shaded/screened Bomar hatch over head Newly carpeted sole Head room is 6'1" Paste this link into your browser for a 360 view of the master stateroom:

MAINSHIP 400 GUEST STATEROOM

The guest stateroom is located to port, down a few steps from the helm. Two single berths with storage beneath Opening/screened portlight Overhead Bomar hatch with screen/shade Hanging locker Cherry cabinetry Carpeted sole Head room ranges from 6' to 6'4" Paste this link into your browser for a 360 view of the guest stateroom:

MAINSHIP 400 HEAD

Starboard head can be accessed from companionway and master stateroom. Stainless steel sink in solid surface topped vanity with storage Stall shower enclosed with glass door Vacu-Flush toilet Opening portlight Head room 6'1" Head room in shower 6'3" Paste this link into your browser for a 360 view of the head:

MAINSHIP 400 FLYBRIDGE

The spacious flybridge is accessed by molded in stairs from the aft cockpit. Height adjustable center helm seat Port and starboard front facing seating with storage space under cushions Long port and starboard center facing seating with storage space under cushions Centerline folding table Round table located on the aft portion of the flybridge Folding Bimini top with full eisenglass enclosure. Courtesy lights on stairs Electronics located at flybridge helm: Furuno NavNet C-Map NT Simrad AP 22 auto pilot ACR searchlight remote control Furuno RD30 NEMA data display Windlass control Icom VHF marine radio CD player Side Power bow thruster control Rudder angle indicator Gauge to monitor fuel/oil pressure/engine temperature/battery Indicator lights for forward/mid/aft bilge pumps and generator Danforth compass Paste this link into your browser for a 360 view of the flybridge:

MAINSHIP 400 AUDIO/VISUAL EQUIPMENT

Sole television JBL MR-145 AM/FM/CD Player with aux input Bose sound system

MAINSHIP 400 ELECTRONICS

Furuno radar Furuno NavNet C-Map NT chart plotter Simrad AP22 auto pilot (flybridge and lower helm) ACR searchlight remote control (flybridge and lower helms) Status light display for bilge pumps and generator (flybridge and lower helm) Windlass control (flybridge and lower helm) Furuno RD30 NEMA data display (flybridge and lower helm)

MAINSHIP 400 ELECTRICAL SYSTEM

Kohler 8kw diesel generator with 146.4 hours indicated Xantrex Prosine 3.0 inverter/charger 50 amp shore power service 50 amp shore power cord Aft and forward shore power inlets

MAINSHIP 400 ENGINE/MECHANICAL EQUIPMENT

Caterpillar 3126 385 hp diesel engine Side Power bow thruster (controls at flybridge and lower helm) Marine Air 16k btu reverse cycle air conditioning system with stainless steel condensate collection pan) Mechanical transmission and engine controls Trim Master trim tabs Advanced Marine Tech oil change system Splendide 2000S vented washer/dryer located under companionway stairs

MAINSHIP 400 DECK EQUIPMENT

Self storing swim ladder Paste the link into your browser for a 360 view of the foredeck:

MAINSHIP 400 TENDER

AB RIB inflatable - 9'6" Mercury 9.9 outboard engine Sea Wise davit system stores tender aft of swim platform Paste this link into your browser for a 360 view of the tender and aft cockpit:

MAINSHIP 400 SAFETY AND FIRE EQUIPMENT

Sea Fire automatic fire suppression system in engine room Kidde fire extinguishers located in aft cockpit and at starboard helm door Carbon Monoxide detector in galley

MAINSHIP 400 EXCLUSIONS

Owner's personal belongings.

Disclaimer

The Company offers the details of this vessel in good faith but cannot guarantee or warrant the accuracy of this information nor warrant the condition of the vessel. A buyer should instruct his agents, or his surveyors, to investigate such details as the buyer desires validated. This vessel is offered subject to prior sale, price change, or withdrawal without notice.

Exclusions

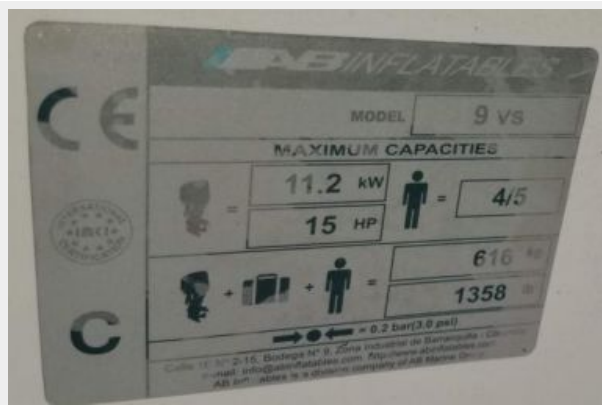
Owner's personal belongings.

Disclaimer

The Company offers the details of this vessel or yacht in good faith but cannot guarantee or warrant the accuracy of this information nor warrant the condition of the vessel. A buyer should instruct his representatives, agents, or his surveyors, to investigate such details as the buyer desires validated. This vessel or yacht is offered subject to prior sale, price change, or withdrawal without notice.

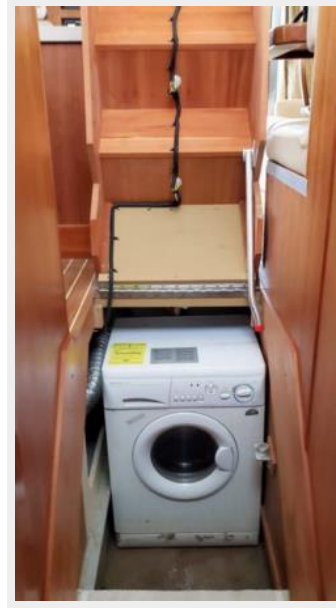
PHOTOS



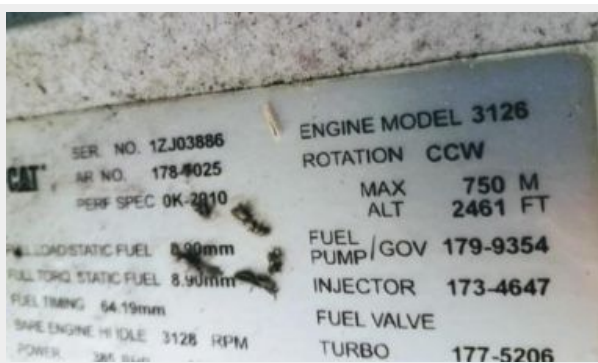
















CONTACTS

Andrey Shestakov, leading yacht broker of the sales department of Shestakov Yacht Sales Inc. Shestakov Yacht Sales Inc., the official representative of the Miami/Fort Lauderdale FL headquarters.

Contact details

Email: **andrey@shestakovyachtsales.com**

Web: shestakovyachtsales.com/en/

Telephones

USA: +1(954)274-4435

Office hours

Monday – Saturday: **9:00 - 21:00** EDT

Sunday: **closed**

Address



Harbour Towne Marina, 850 NE 3rd St,
STE 213, Dania, FL 33004