

DOUBLE D — MAINSHIP



Судостроитель: MAINSHIP

Год постройки: 2004

Модель: Моторная яхта

Цена: **ЦЕНА ЯХТЫ ПО ЗАПРОСУ**

Местонахождение: United States

Длина общая: 41' 4" (12.60m)

Ширина: 14' 2" (4.32m)

Макс. осадка: 3' 8" (1.12m)

Крейс. скорость: 13 Kts. (15 MPH)

Макс. скорость: 20 Kts. (23 MPH)

Купить **Double D — MAINSHIP** а также выбрать подходящую вам яхту из нашего каталога яхт вам поможет опытный яхтенный брокер Андрей Шестаков. На сегодняшний день компания **Shestakov Yacht Sales Inc.** имеет большое количество яхт в собственном списке продаж, а также тесно сотрудничает со всеми крупными яхтенными производителями по всему миру.

Для того чтобы купить яхту **Double D — MAINSHIP** а также проконсультироваться по любому вопросу связанному с покупкой, продажей, чартером яхт позвоните по телефону **+7(918)465-66-44**.

ОГЛАВЛЕНИЕ

ОГЛАВЛЕНИЕ	2
ХАРАКТЕРИСТИКИ	5
Обзор	5
Основная информация	5
Размеры	5
Скорость, вместимость и масса	5
Размещение	6
Корпус и палуба	6
Информация о двигателе	6
ПОДРОБНОЕ ОПИСАНИЕ	7
Galley	7
Salon	7
Master Stateroom	8
Port Guest Stateroom	8
Head	9
Fly Bridge	9
Deck	10
Electronics	11
Electrical	12
Engine / Mechanical	12
Disclaimer	14
Исключения	14
Отказ от ответственности	14
ФОТОГРАФИИ	15
Starboard	15
Forward View	15
Aft View	15
Profile - Port	15

Port	15
Cockpit looking to Starboard	15
Port Settee	16
Port Aft Tv	16
Salon Looking Aft	16
Dining Area	16
Dining Looking to Port	16
Galley	16
Galley	17
Galley from Pilothouse	17
Pilothouse from Salon	17
Pilothouse	17
Lower Helm	17
Lower Helm	17
Companion Way	18
Master Stateroom	18
Portside Guest Stateroom / Salon Looking Aft	18
Portside Guest Stateroom	18
Head	18
Companion Way to Salon	18
Salon Headliner	19
Salon Sole Looking Aft	19
Salon Sole Looking Forward	19
Engine Access	19
Upper Aft Deck	19
Cockpit looking Aft	19
Custom Dinghy and Storage	20
Upper Aft Deck Looking Aft	20
Custom Sun Shade	20

Custom Sun Shade	20
Summer Galley (Grill, Sink, Refrigerator)	20
Flybridge Looking Aft	20
Flybridge Seating Area	21
Flybridge Looking Forward	21
Custom Davit with Covered Mercury Marine Dinghy	21
Flybridge Helm	21
КОНТАКТЫ	22
Контактная информация	22
Телефоны	22
Время работы	22
Адрес	22

ХАРАКТЕРИСТИКИ

Обзор

A BEAUTIFUL and PROFESSIONALLY-MAINTAINED 2004 400 Mainship with numerous upgrades and custom additions, such as an easy to install/remove sun shade and custom davit with 2014 Mercury Marine Dinghy with Tohatsu 6hp outboard motor, "Double D" is a sleek and stylish approach to an American Classic Trawler. Powered by twin 240HP Yanmar Diesel Engines and an easy to use NEW and UPGRADED bow thruster side power joystick controller! She is beautiful, strong and SUPER economical, perfect for any cruising couple or even a family of 4 to cruise into their next adventure, or even complete the "Great Loop." The 400 Mainship Trawler has been well known as the top candidate for many "loopers."

Основная информация

Тип судна: Моторная яхта

Подкатегория: Моторная яхта

Модельный год: 2004

Год постройки: 2004

Страна: United States

Размеры

Длина общая: 41' 4" (12.60m)

Ширина: 14' 2" (4.32m)

Макс. осадка: 3' 8" (1.12m)

Трапы: 19' 2" (5.84m)

Скорость, вместимость и масса

Крейс. скорость: 13 Kts. (15 MPH)

Макс. скорость: 20 Kts. (23 MPH)

Вместимость воды: 130 Gallons

Вместимость сточного бака: 44 Gallons

Объем топливного бака: 300 Gallons

Размещение

Всего кают: 2

Всего ком. состава: 1

Корпус и палуба

Материал корпуса: Fiberglass

Информация о двигателе

Двигатели: 2

Производитель: Yanmar

Модель: 4LHA STP

Тип двигателя: Inboard

Тип топлива: Diesel

ПОДРОБНОЕ ОПИСАНИЕ

Galley

The starboard side galley is well equipped for your cruising and entertaining needs. The open layout of this galley with the forward settee dining table leaves ample space while the large opening windows radiate the space with natural light, ventilation and near 360 degree unobstructed views. She is set up to go somewhere beautiful and enjoy the views from all locations aboard.

- Corian countertop.
- **NEW** 2017 Nova Kool AC/DC Refrigerator/Freezer.
- Dual Stainless-Steel sink and faucet.
- GE turntable microwave oven.
- Princess 3 burner electric range and oven w/ storage drawer underneath.
- Dish and cup locker with framed glass door.
- Under counter storage cabinets.
- Overhead storage cabinets.
- Additional cabinet space installed.
- 6 storage drawers.
- LARGE sliding window.
- Trash bin compartment with convenient drop through on counter.

Salon

When entering the salon, you will notice the impeccable maintenance of this boat. The beautiful Teak and Maple flooring gives this space a stylish and refined look. There is an ultra-leather sofa with built-in storage underneath on the port side of this bright and inviting room. Forward is a high gloss table with two chairs and an upholstered and very comfortable cushioned bench seat for dining, games, entertaining or computer work.

- Teak and Maple flooring.
- Ultra-leather sofa with large storage area underneath.
- All aluminum framed glass swing-out double doors and opening windows for air-flow and reduced maintenance.

- Interior lighting with 4 overheads lights.
- Port and Starboard mini-blinds with upholstered valences.
- Aft bulkhead curtain.
- Full Lower Helm station with electronics package and courtesy lighting.
- Opening center windshield.
- Sliding side windows.
- Dual Zone air conditioning with reverse cycle heat (NEW AC in 2017).
- **UPGRADED AND NEW** Sony Blu-ray entertainment system.
- **UPGRADED AND NEW** 32" Insignia Flat Panel TV with wired switch for air and cable.

Master Stateroom

The master stateroom has a comfortable centerline Island Queen berth with 2 drawers at the foot of the berth and additional storage below. A centerline skylight opening hatch allows natural light to illuminate the stateroom as well as natural air. A pair of reading lamps strategically placed overhead for ample light perfect for day or nighttime reading. A full cedar lined hanging closet is on the starboard side and a half height cedar locker on the port side. Two opening screened portholes provide additional air flow and light.

- Center lined Island Queen berth.
- Storage drawers under berth.
- 2 Cedar lined hanging lockers.
- Reading lights.
- Opening Stainless steel portholes with screens.
- Opening skylight hatch with sunshade.
- TV with wired switch for air or cable.
- In-suite head with day head access from companion way.

Port Guest Stateroom

A few steps down from the salon on the portside is the guest stateroom. Queen berth or a

convertible Double berth make this a lovely room for two kids or a couple. Four cabinet doors are above the berth and ample storage below the berth. Outboard you will find a cedar lined hanging locker with auto light, reading light and CO detector. A skylight opening hatch allows natural light to fill the space and opening portholes provide plenty of natural air flow.

- Queen bed with convertible 2 single berth configuration (filler mattress between).
- Cedar lined hanging locker.
- Opening Stainless steel porthole with screen.
- Opening skylight hatch.

Head

The single head is a fiberglass finish with a molded tub and shower combo. The Jabsco toilet is positioned forward and outboard. The sink has storage below and a top loading hamper. Stainless steel opening porthole provide fresh air in the head and the ac vents keep it comfortable.

- Molded FRP head compartment.
- Corian countertop.
- Spacious stall shower with tub.
- Vanity and mirror.
- Opening Stainless steel porthole with screen.
- Jabsco toilet.

Fly Bridge

The captain is positioned forward and center on the flybridge with complete visibility of the water and ground tackle. The open floor plan allows the captain to be part of the on-deck entertaining and makes for easy boat maneuvering and handling due to the excellent visibility. Beautifully upholstered lounge seating and fold up table make the space perfect for enjoying company, snacks, games, or a beautiful sunset dinner at anchor. The summer galley is equipped with a grill, wet bar, ice maker, table and custom easy to install/remove and stow sun shade for hot summer days.

- Bimini top with custom designed removable extension, easy to launch and stow.
- Upper helm with full electronics package (radar, depth finder, speed, autopilot, **NEW**)

Garmin GPS, and **NEW** Fusion Stereo System with JBL speakers).

- Spacious lounge seating.
- Hinged folding radar mast for reduced air draft and low bridges.
- Folding table with two folding chairs.
- Summer Galley with grill, stainless steel sink, wet bar, ice maker, table and custom shade.
- Propane tank storage cabinet, port side outboard.
- Stainless steel safety rails.

Deck

The open aft deck has a transom gate leading to the swim platform that has a recently upgraded custom designed davit with a 2014 Mercury Marine dingy with Tohatsu 6 HP outboard. The open aft cockpit area is perfect for a few deck chairs with flexible seating arrangement.

- Stainless steel Sampson post.
- Textilene windshield and pilot door covers.
- Cockpit storage.
- Aluminum framed salon doors and windows for reduced maintenance.
- Custom made sunbrella window covers for all windows, hatches, and starboard door.
- Cable TV and telephone connections.
- 50 AMP Shore power connection.
- Stainless steel bow rails.
- Bow pulpit with two anchors and dual rollers. (**UPGRADED** Ultra 316 stainless steel anchor).
- 2 Anchor locker compartments.
- Stainless steel 12" cleats located bow, mid-ship, and stern.
- Courtesy lights.
- Dockside water connections.
- Molded swim platform with ladder.
- Custom designed, light weight and easy to launch and retrieve davit system with Mercury Marine dingy (2014) with Tohatsu 6hp outboard motor. Designed and installed to allow

access through transom door to swim platform, and to ladder with dinghy attached to davit system.

- Custom made Sunbrella dinghy cover.
- Hot & Cold aft deck freshwater shower.
- Aft deck transom storage compartment.
- Dual electric horns.
- Molded steps to flybridge.
- International navigation lights.
- 3 Bomar hatches.
- Molded non-skid decks.
- Deep, wide, and covered walk-around on both port and starboard sides.

Electronics

Lower Helm Station

- Garmin 5208 GPSmap.
- Danforth global balance compass.
- Windlass control switch.
- Fusion stereo system controller with 2 speakers.
- Trimaster Trim tab control system.
- Faria engine displays.
- Side power bow thruster control.

Upper Helm Station

- **NEW** Garmin 7612 GPS.
- **NEW** easy to use Joystick control bow thruster (installed 2018).
- Remote Windlass control switch on Pilothouse.
- Raymarine RL70CRC Plus radar/GPS chartplotter.
- Raymarine 4kw, 48 nm Radome radar.

- Raymarine ST60 Tri-data, depth, speed, and distance log.
- Raymarine ST6001 autopilot.
- VHF radio.
- Trimaster trim tab control system.
- Faria engine displays.
- Danforth global balance compass.
- Fusion stereo system with 4 JBL speakers.

Electrical

- Kohler 9 KW diesel generator with sound shield.
- AC/DC Inverter 50 AMP.
- Bow and Stern connections.
- 50 AMP shore power cord.
- Central bonding system.
- **NEW 2019** 12 volt two bank (house and engine) battery system.
- **NEW 2019** 12 volt generator start battery.
- Battery parallel switch.
- 4 Percko battery cutoff switches.
- 1240p, 40-amp digital battery charger.
- AC/DC circuit breakers.
- GFCI 100v outlet.
- 3 Electric bilge pumps.
- Water heater.

Engine / Mechanical

- Twin Yanmar 4LHA STP, 240hp diesel engines with 1100 hours.

- **NEW** Engine intake water hoses (2019).
- **NEW** Mixing elbows (2019).
- **NEW** Batteries (2018).
- ZF 63A transmissions with 2.5:1 reduction gears.
- Sidepower 12V electric bow thruster with Joystick controller on flybridge.
- Sea Fire 1301 halon automatic fire extinguishing system in engine room & lazarette.
- Teleflex hydraulic steering.
- Teleflex mechanical engine controls.
- Lewmar electric anchor windlass.
- Bronze struts and rudders.
- **NEW** AC units with zone reverse cycle (2018).
- 2 Fuel filters.
- Oil change system.
- Internal seawater strainer.
- Dripless shaft seals.
- Hydraulic trim tabs.
- Tank monitor.
- Overboard discharge with macerator.
- Hot and cold pressure water.
- Easy access to engine room via salon hatch.
- **NEW** CO2 Detectors 2019.
- **NEW** Carbon Monoxide alarms 2018.
- Stainless steel shafts.
- Macerator pump.
- Hot water heater.
- Water tank monitor.

- High water alarm with 4000gph Emergency Bilge Pump.
- All engine motor mounts serviced by Yanmar dealer including replacing the rubber isolation compression mounts 2019.

Disclaimer

The Company offers the details of this vessel in good faith but cannot guarantee or warrant the accuracy of this information nor warrant the condition of the vessel. A buyer should instruct his agents, or his surveyors, to investigate such details as the buyer desires validated. This vessel is offered subject to prior sale, price change, or withdrawal without notice.

Исключения

При продаже яхты исключаются личные вещи владельца.

Отказ от ответственности

Компания предоставляет описание судна или яхты добросовестно, но не может гарантировать точность этой информации, а также не ручается за техническое состояние. Покупатель должен проинструктировать своих агентов или оценщиков исследовать представленную информацию более подробно, по собственному желанию. Продажа судна или яхты, изменение цены или снятие с продажи будет происходить без предварительного уведомления.

ФОТОГРАФИИ

Starboard



Forward View



Aft View



Profile - Port



Port



Cockpit looking to Starboard



Port Settee



Port Aft Tv



Salon Looking Aft



Dining Area



Dining Looking to Port



Galley



Galley



Galley from Pilothouse



Pilothouse from Salon



Pilothouse



Lower Helm



Lower Helm



Companion Way



Master Stateroom



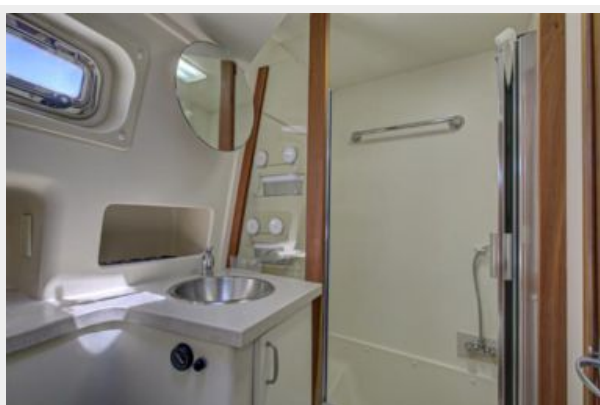
Portside Guest Stateroom / Salon Looking Aft



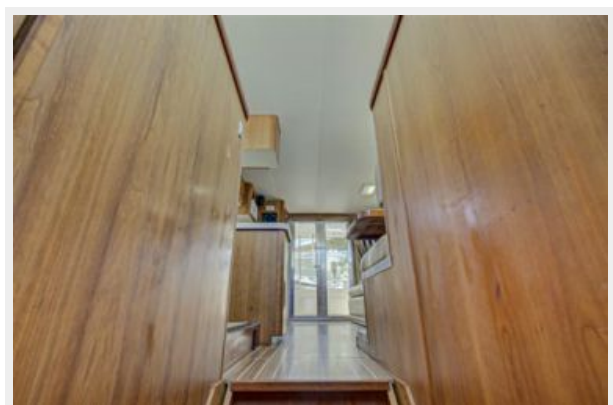
Portside Guest Stateroom



Head



Companion Way to Salon



Salon Headliner



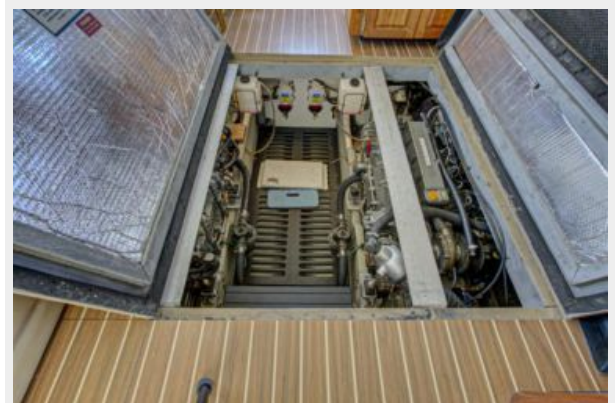
Salon Sole Looking Aft



Salon Sole Looking Forward



Engine Access



Upper Aft Deck



Cockpit looking Aft



Custom Dinghy and Storage



Upper Aft Deck Looking Aft



Custom Sun Shade



Custom Sun Shade



Summer Galley (Grill, Sink, Refrigerator)



Flybridge Looking Aft



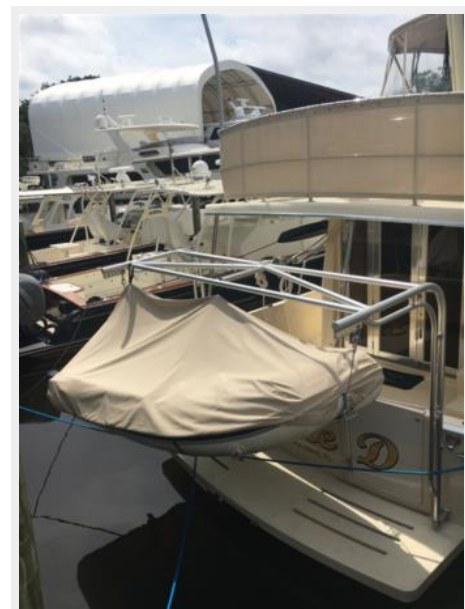
Flybridge Seating Area



Flybridge Looking Forward



Custom Davit with Covered Mercury Marine Dinghy



Flybridge Helm



КОНТАКТЫ

Андрей Шестаков (Andrey Shestakov) – ведущий яхтенный брокер отдела продаж яхт и судов компании Shestakov Yacht Sales Inc. Официальный представитель Shestakov Yacht Sales Inc. для русскоговорящих клиентов в центральном офисе компании в Майами/Форт Лодердейл/Флорида/США.

Контактная информация

Email: andrey@shestakovyachtsales.com

Web: shestakovyachtsales.com

Телефоны

Краснодарский край: **+7(918)465-66-44**

США, Майами, Флорида: **+1(954)274-4435**

Время работы

Понедельник – Суббота: **9:00 - 21:00**
EDT

Воскресенье: **Закрито**

Адрес



Harbour Towne Marina, 850 NE 3rd St,
STE 213, Dania, FL 33004