

## LIQUIDITY — PLATINUM



**Builder:** [Platinum](#)

**Year Built:** 2009

**Model:** Motor Yacht

**Price:** PRICE ON APPLICATION

**Location:** St. Maarten

**LOA:** 120' 0" (36.58m)

**Beam:** 24' 0" (7.32m)

**Max Draft:** 6' 8" (2.03m)

**Cruise Speed:** 12 Kts. (14 MPH)

**Max Speed:** 17 Kts. (20 MPH)

Our experienced yacht broker, Andrey Shestakov, will help you choose and buy a yacht that best suits your needs **LIQUIDITY — Platinum** from our catalogue. Presently, at Shestakov Yacht Sales Inc., we have a wide variety of yachts available on our sale's list. We also work in close contact with all the big yacht manufacturers from all over the world.

If you would like to buy a yacht **LIQUIDITY — Platinum** or would like help answering any questions concerning purchasing, selling or chartering a yacht, please call **+1(954)274-4435**

# TABLE OF CONTENTS

TABLE OF CONTENTS	2
SPECIFICATIONS	6
Basic Information	6
Dimensions	6
Speed, Capacities and Weight	6
Accommodations	6
Hull and Deck Information	6
Engine Information	7
DETAILED INFORMATION	8
Description	8
EXTERIOR	8
INTERIOR	9
FOREDECK EQUIPMENT	9
AFT DECK	9
BELOW WATERLINE	9
MACHINERY ROOM	10
SALON	10
GALLEY	10
MASTER STATEROOM - FWD LOWER DECK	11
VIP STATEROOM / MASTER LOUNGE	11
GUEST STATEROOM - FWD PORT SIDE	11
GUEST STATEROOM - AFT PORT SIDE	11
PILOTHOUSE & NAVIGATION	11
FLYBRIDGE	12
Remarks	12
Exclusions	12
Disclaimer	13
PHOTOS	14

Jacuzzi - Cover On	14
Jacuzzi - Cover Off	14
Bow	14
Bow	14
Walkaround Deck	14
Bow	14
Pilothouse	15
Pilothouse	15
Pilothouse	15
Main Salon Looking Aft	15
Main Salon	15
Main Salon Stand-Up Wet Bar	15
Skylounge Dining	16
Skylounge Dining	16
Skylounge	16
Master Stateroom	16
Master Stateroom	16
Master Stateroom	16
Master Bath	17
Master Lounge	17
Master Lounge	17
Master Lounge	17
Master Lounge	17
Guest Stateroom - Fwd.	17
Guest Bath - Fwd.	18
Guest Stateroom - Fwd.	18
Guest Stateroom - Fwd.	18
Guest Stateroom - Fwd.	18
Guest Bath	18

Hallway to Guest Cabins	18
Stairs to VIP/Master Lounge	19
Galley	19
Galley	19
Galley	19
Galley Dining	19
Galley Dining	19
Laundry	20
Crew Quarters	20
Crew Quarters	20
Crew Bath	20
Engine Room	20
Engine Room	20
Engine Room	21
Engine Room	21
Engine Room	21
Engine Room	21
Engine Room	21
Engine Room	21
Engine Room	21
Engine Room	22
Engine Room	22
Engine Room	22
Engine Room	22
Engine Room	22
Engine Room	22
Engine Room	22
CONTACTS	23
Contact details	23
Telephones	23
Office hours	23

---

Address

23

---

---

# SPECIFICATIONS

---

## Basic Information

---

**Category:** Motor Yacht

**Model Year:** 2009

**Year Built:** 2009

**Country:** St. Maarten

**Fly Bridge:** Yes

**Cockpit:** Yes

## Dimensions

---

**LOA:** 120' 0" (36.58m)

**Beam:** 24' 0" (7.32m)

**Max Draft:** 6' 8" (2.03m)

## Speed, Capacities and Weight

---

**Cruise Speed:** 12 Kts. (14 MPH)

**Max Speed:** 17 Kts. (20 MPH)

**Displacement:** 134000 Pounds

**Fuel Capacity:** 2800 Gallons

## Accommodations

---

**Total Cabins:** 5

**Total Heads:** 9

## Hull and Deck Information

---

**Hull Material:** Fiberglass

**Hull Finish:** Stainless Steel

---

## Engine Information

---

**Engines:** 2

**Manufacturer:** Caterpillar

**Model:** C-18 Acert

**Engine Type:** Inboard

**Fuel Type:** Diesel

---

# DETAILED INFORMATION

---

## Description

---

LIQUIDITY was rebuilt as new and relaunched in 2010. She has a very high quality interior joinery with a spacious layout for entertaining families and large groups. The aft cockpit gives excellent access to all water sports including fishing and diving.

This yacht offers tremendous value and competes with yachts for quality, accommodations and layout at over twice the price. Schedule an appointment and see for yourself.

- "LIQUIDITY" ex "Spirit of 2010"
- Hull constructed 1985 by Palmer Yard, Vancouver BC and Rebuild 2009. Superstructure and Relaunched 2009 by Platinum Marine
- Interior cabins and community areas have received new furnishings and entertainment electronics.
- Hull constructed composite AIREX Cored Reinforced Fiberglass
- Tri-Deck, Pilothouse, Flybridge, Flush Main Deck, Huge Cockpit and Swim Platform
- 5-Cabin Layout w/ 3 Crew Quarters
- Huge aft deck, cockpit and foredeck are laid teak.
- 25,000 Watts to Custom Subwoofers, 54 Speakers, 12 Flat Panel Screens, Networked and Syncs to Underwater Light System
- 2 Jet Ski's and 17' Zodiac w/ 60hp Outboard
- Foredeck Jacuzzi and Sun Pad
- Naiad Bow and Stern Thrusters
- Naiad Stabilizers
- Bulbous Bow to Reduce Fuel Consumption and Increase Speed

## EXTERIOR

---

- Open FlyBridge with Full Electronics and Controls, Overhead Mast Incorporating SAT Communications, Horn, Navigation Lights
- Exiting Aft and Down to the Boat Deck w Circular Settee, P/S Life Rafts, P/S Jet Skis 300hp each, 17' Zodiac w 60hp OB, Davit Hoist
- Forward is Pilothouse entered by P/S Sliding Doors and Aft is Formal Dining Room
- P&S Sliding Doors lead to Portuguese Walkway in front of Pilot House
- Foredeck w/ Watertight Hatch to Chain Locker, Dual Windlass, Escape Hatch from Forward Stateroom
- 900 Gallon Jacuzzi Tub on Foredeck w/ Sun Pad. Sun Pad Removes and Mounts to Bow Railing when Jacuzzi in use.
- (7) Rod holders
- Side Decks are Full Walk-Around behind Bulwarks



---

## INTERIOR

---

- VIP / Master Stateroom Forward w/ Ensuite Head w/ Steam / Shower and Full Entertainment Electronics
- Moving up and Aft is the VIP / Master Lounge on Main Deck
- Moving down Stairway from Salon are Six Staterooms w/ Head and Shower Ensuite and Full Entertainment Electronics
- Aft of the Staterooms is Utility Closet and Stand Up Freezer
- Entering a Watertight Door on the Swim Platform is Crew Quarters to Port and Head and Shower to Starboard
- Electrical Panels in Passageway to Machinery Door

---

## FOREDECK EQUIPMENT

---

- Two Maxwell Windlass
- Laid Teak in Windlass Area
- Two Chain Stoppers
- Two Fulford 180kg Anchors
- Two 300' Anchor Chain Ropes
- Watertight Door to Chain Locker
- Jacuzzi (900 gallon) w Sun Pad, Removable Sun Pad Mounts on Bow

---

## AFT DECK

---

- Located above Cockpit
- Wet Bar to Port, w/ Sink and Refrigeration
- Two Settees w/ Tables
- Rod Holders
- Teak Aft Deck Cockpit leading to Swim Platform
- Teak Swim Platform w/ SS Removable Rails
- Salt and Fresh Water Wash Down
- Watertight Door to Crew Quarters and Machinery Room
- Lazarette Hatch to Steering Rams and Rudder Glands

---

## BELOW WATERLINE

---

- Bulbous Bow to Reduce Fuel Consumption
- Bulbous Bow to Increase Speed
- Naiad Stabilizers
- Naiad Bow and Stern Thrusters

---

## MACHINERY ROOM

---

- Access from Aft Cockpit Watertight Door
- Caterpillar C18 ACERT (Two)
- 1,000 Horsepower
- Hours P & S 4,500
  
- ZF 550A Transmissions
- Cruise Speed 10-12 kts WOT 16 kts
  
- (2) Northern Lights Generators 60kw & 45kw
  
- Port 5,709 Hours 45Kw
- Starboard 6,917 Hours 65Kw
- Back up 16Kw
- Naiad Stabilizers
- Naiad Bow & Stern Thrusters
- Sea Chests Strainers
- Racor 1000 Fuel Filters
- Magna Battery Charger
- Sea Recovery 1800 Watermaker
- New Chillers for Air Conditioning
- Underwater Lights Multi-Color
- Three Fuel Tanks Aluminum 2,800 Gallons Total

---

## SALON

---

- Day Head Aft
- Windows P/S
- Full Levolor Shades
- 60" Flat Screen
- Full Bar Forward w/ Bar Stools
- Settee in Center
- Two Large Sofas
- Ottomans

---

## GALLEY

---

- Country Kitchen
- Dishwasher
- Viking 5-Burner Stove
- Two GE Profile Ovens
- Two GE Profile Refrigerators / Freezers

- LG Microwave
- Viking Ice Maker
- Center Island Bar
- SS Sinks w/ Disposer
- Teak and Holly Sole

---

## **MASTER STATEROOM - FWD LOWER DECK**

---

- Access from Media Room
- Island Queen
- New Carpet
- Flat Screen
- Large Head and Vanity w/ Stall Steam Shower

---

## **VIP STATEROOM / MASTER LOUNGE**

---

- Media Room w/ Full Entertainment Electronics and 67" Flat Screen
- Two Sofas, New Carpeting
- Ships Sound System
- 25,000 Watts Sound System
- Custom Sub-Woofers, 54 Speakers, 12 Flat Screens, Networked to Multi-color Underwater Lights and Camera

---

## **GUEST STATEROOM - FWD PORT SIDE**

---

- Queen Island Berths
- Head and Vanity w/ Stall Shower
- Flat Screens and Entertainment Electronics

---

## **GUEST STATEROOM - AFT PORT SIDE**

---

- Over & Under Bunks
- Head and Vanity w/ Stall Shower
- Flat Screens and Entertainment Electronics

---

## **PILOTHOUSE & NAVIGATION**

---

- Located Upper Deck
- Danforth Constellation Compass

- Navigation Systems Furuno Nav Net
- GPS Furuno & Raymarine
- Chart Plotter Furuno
- Video Sounder Furuno
- Radar 2 Furuno
- VHF Two ICOM M602
- Auto Pilot Raymarine ST8002
- Speed / Depth Raymarine ST60
- Engine Controls Kobelt
- Stabilizer Controls
- Bow and Stern Thruster Control
- Pompanette Helm Chair

---

## FLYBRIDGE

---

- Located Upper Deck
- Danforth Constellation Compass
- Navigation Systems Furuno Nav Net
- GPS Furuno & Raymarine
- Chart Plotter Furuno
- Video Sounder Furuno
- Radar 2 Furuno
- VHF ICOM M602
- Auto Pilot Raymarine ST8002
- Speed / Depth Raymarine ST60
- Engine Controls Kobelt
- Stabilizer Controls
- Bow and Stern Thruster Control

---

## Remarks

---

LIQUIDITY was rebuilt as new and relaunched in 2010. She has a very high quality interior joinery with a spacious layout for entertaining families and large groups. The aft cockpit gives excellent access to all water sports including fishing and diving.

This yacht offers tremendous value and competes with yachts for quality, accommodations and layout at over twice the price.

Schedule an appointment and see for yourself.

---

## Exclusions

---

Owner's personal belongings.

## Disclaimer

---

The Company offers the details of this vessel or yacht in good faith but cannot guarantee or warrant the accuracy of this information nor warrant the condition of the vessel. A buyer should instruct his representatives, agents, or his surveyors, to investigate such details as the buyer desires validated. This vessel or yacht is offered subject to prior sale, price change, or withdrawal without notice.

# PHOTOS

**Jacuzzi - Cover On**



**Jacuzzi - Cover Off**



**Bow**



**Bow**



**Bow**



**Walkaround Deck**



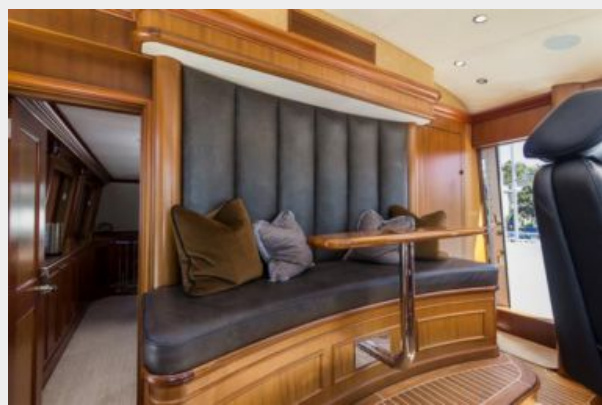
**Pilothouse**



**Pilothouse**



**Pilothouse**



**Main Salon Looking Aft**



**Main Salon**



**Main Salon Stand-Up Wet Bar**





**Skylounge Dining**



**Skylounge Dining**



**Skylounge**



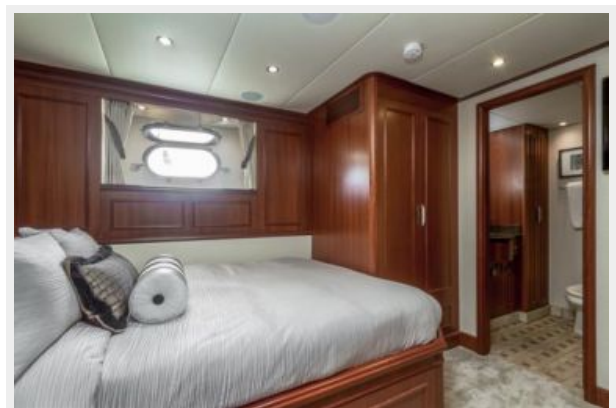
**Master Stateroom**



**Master Stateroom**



**Master Stateroom**





**Master Bath**



**Master Lounge**



**Master Lounge**



**Master Lounge**



**Master Lounge**



**Guest Stateroom - Fwd.**



**Guest Stateroom - Fwd.**



**Guest Bath - Fwd.**



**Guest Stateroom - Fwd.**



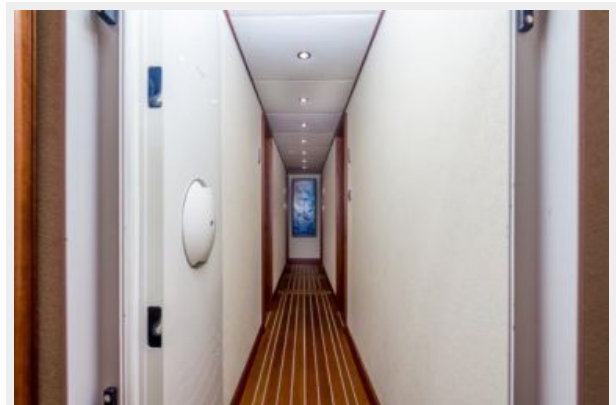
**Guest Stateroom - Fwd.**



**Guest Bath**



**Hallway to Guest Cabins**





### Stairs to VIP/Master Lounge



### Galley



### Galley



### Galley



### Galley Dining



### Galley Dining



**Laundry**



**Crew Quarters**



**Crew Quarters**



**Crew Bath**



**Engine Room**



**Engine Room**





**Engine Room**



**Engine Room**



**Engine Room**



**Engine Room**



**Engine Room**



**Engine Room**



**Engine Room**



**Engine Room**



**Engine Room**



**Engine Room**



**Engine Room**



**Engine Room**



# CONTACTS

---

Andrey Shestakov, leading yacht broker of the sales department of Shestakov Yacht Sales Inc. Shestakov Yacht Sales Inc., the official representative of the Miami/Fort Lauderdale FL headquarters.

## Contact details

---

Email: [andrey@shestakovyachtsales.com](mailto:andrey@shestakovyachtsales.com)

Web: [shestakovyachtsales.com/en/](http://shestakovyachtsales.com/en/)

## Telephones

---

USA: +1(954)274-4435

## Office hours

---

Monday – Saturday: **9:00 - 21:00** EDT

Sunday: **closed**

## Address

---



Harbour Towne Marina, 850 NE 3rd St,  
STE 213, Dania, FL 33004