

LIQUIDITY — PLATINUM



Судостроитель: [Platinum](#)

Год постройки: 2009

Модель: Моторная яхта

Цена: ЦЕНА ЯХТЫ ПО ЗАПРОСУ

Местонахождение: St. Maarten

Длина общая: 120' 0" (36.58m)

Ширина: 24' 0" (7.32m)

Макс. осадка: 6' 8" (2.03m)

Крейс. скорость: 12 Kts. (14 MPH)

Макс. скорость: 17 Kts. (20 MPH)

Купить LIQUIDITY — Platinum а также выбрать подходящую вам яхту из нашего каталога яхт вам поможет опытный яхтенный брокер Андрей Шестаков. На сегодняшний день компания Shestakov Yacht Sales Inc. имеет большое количество яхт в собственном списке продаж, а также тесно сотрудничает со всеми крупными яхтенными производителями по всему миру.

Для того чтобы купить яхту LIQUIDITY — Platinum а также проконсультироваться по любому вопросу связанному с покупкой, продажей, чартером яхт позвоните по телефону **+7(918)465-66-44**.

ОГЛАВЛЕНИЕ

ОГЛАВЛЕНИЕ	2
ХАРАКТЕРИСТИКИ	6
Основная информация	6
Размеры	6
Скорость, вместимость и масса	6
Размещение	6
Корпус и палуба	6
Информация о двигателе	7
ПОДРОБНОЕ ОПИСАНИЕ	8
Description	8
EXTERIOR	8
INTERIOR	9
FOREDECK EQUIPMENT	9
AFT DECK	9
BELOW WATERLINE	9
MACHINERY ROOM	10
SALON	10
GALLEY	10
MASTER STATEROOM - FWD LOWER DECK	11
VIP STATEROOM / MASTER LOUNGE	11
GUEST STATEROOM - FWD PORT SIDE	11
GUEST STATEROOM - AFT PORT SIDE	11
PILOTHOUSE & NAVIGATION	11
FLYBRIDGE	12
Remarks	12
Исключения	12
Отказ от ответственности	13
ФОТОГРАФИИ	14

Jacuzzi - Cover On	14
Jacuzzi - Cover Off	14
Bow	14
Bow	14
Walkaround Deck	14
Bow	14
Pilothouse	15
Pilothouse	15
Pilothouse	15
Main Salon Looking Aft	15
Main Salon	15
Main Salon Stand-Up Wet Bar	15
Skylounge Dining	16
Skylounge Dining	16
Skylounge	16
Master Stateroom	16
Master Stateroom	16
Master Stateroom	16
Master Bath	17
Master Lounge	17
Master Lounge	17
Master Lounge	17
Master Lounge	17
Guest Stateroom - Fwd.	17
Guest Bath - Fwd.	18
Guest Stateroom - Fwd.	18
Guest Stateroom - Fwd.	18
Guest Stateroom - Fwd.	18
Guest Bath	18

Hallway to Guest Cabins	18
Stairs to VIP/Master Lounge	19
Galley	19
Galley	19
Galley	19
Galley Dining	19
Galley Dining	19
Laundry	20
Crew Quarters	20
Crew Quarters	20
Crew Bath	20
Engine Room	20
Engine Room	20
Engine Room	21
Engine Room	21
Engine Room	21
Engine Room	21
Engine Room	21
Engine Room	21
Engine Room	21
Engine Room	21
Engine Room	22
Engine Room	22
Engine Room	22
Engine Room	22
Engine Room	22
Engine Room	22
Engine Room	22
Engine Room	22
Engine Room	22
КОНТАКТЫ	23
Контактная информация	23
Телефоны	23
Время работы	23

Адрес

23

ХАРАКТЕРИСТИКИ

Основная информация

Тип судна: Моторная яхта

Модельный год: 2009

Год постройки: 2009

Страна: St. Maarten

Открытая палуба мостика: Да

Кубрик: Да

Размеры

Длина общая: 120' 0" (36.58m)

Ширина: 24' 0" (7.32m)

Макс. осадка: 6' 8" (2.03m)

Скорость, вместимость и масса

Крейс. скорость: 12 Kts. (14 MPH)

Макс. скорость: 17 Kts. (20 MPH)

Водоизмещение: 134000 Pounds

Объем топливного бака: 2800 Gallons

Размещение

Всего кают: 5

Всего ком. состава: 9

Корпус и палуба

Материал корпуса: Fiberglass

Отделка корпуса: Stainless Steel

Информация о двигателе

Двигатели: 2

Производитель: Caterpillar

Модель: C-18 Acert

Тип двигателя: Inboard

Тип топлива: Diesel

ПОДРОБНОЕ ОПИСАНИЕ

Description

LIQUIDITY was rebuilt as new and relaunched in 2010. She has a very high quality interior joinery with a spacious layout for entertaining families and large groups. The aft cockpit gives excellent access to all water sports including fishing and diving.

This yacht offers tremendous value and competes with yachts for quality, accommodations and layout at over twice the price. Schedule an appointment and see for yourself.

- "LIQUIDITY" ex "Spirit of 2010"
- Hull constructed 1985 by Palmer Yard, Vancouver BC and Rebuild 2009. Superstructure and Relaunched 2009 by Platinum Marine
- Interior cabins and community areas have received new furnishings and entertainment electronics.
- Hull constructed composite AIREX Cored Reinforced Fiberglass
- Tri-Deck, Pilothouse, Flybridge, Flush Main Deck, Huge Cockpit and Swim Platform
- 5-Cabin Layout w/ 3 Crew Quarters
- Huge aft deck, cockpit and foredeck are laid teak.
- 25,000 Watts to Custom Subwoofers, 54 Speakers, 12 Flat Panel Screens, Networked and Syncs to Underwater Light System
- 2 Jet Ski's and 17' Zodiac w/ 60hp Outboard
- Foredeck Jacuzzi and Sun Pad
- Naiad Bow and Stern Thrusters
- Naiad Stabilizers
- Bulbous Bow to Reduce Fuel Consumption and Increase Speed

EXTERIOR

- Open FlyBridge with Full Electronics and Controls, Overhead Mast Incorporating SAT Communications, Horn, Navigation Lights
- Exiting Aft and Down to the Boat Deck w Circular Settee, P/S Life Rafts, P/S Jet Skis 300hp each, 17' Zodiac w 60hp OB, Davit Hoist
- Forward is Pilothouse entered by P/S Sliding Doors and Aft is Formal Dining Room
- P&S Sliding Doors lead to Portuguese Walkway in front of Pilot House
- Foredeck w/ Watertight Hatch to Chain Locker, Dual Windlass, Escape Hatch from Forward Stateroom
- 900 Gallon Jacuzzi Tub on Foredeck w/ Sun Pad. Sun Pad Removes and Mounts to Bow Railing when Jacuzzi in use.
- (7) Rod holders
- Side Decks are Full Walk-Around behind Bulwarks

INTERIOR

- VIP / Master Stateroom Forward w/ Ensuite Head w/ Steam / Shower and Full Entertainment Electronics
- Moving up and Aft is the VIP / Master Lounge on Main Deck
- Moving down Stairway from Salon are Six Staterooms w/ Head and Shower Ensuite and Full Entertainment Electronics
- Aft of the Staterooms is Utility Closet and Stand Up Freezer
- Entering a Watertight Door on the Swim Platform is Crew Quarters to Port and Head and Shower to Starboard
- Electrical Panels in Passageway to Machinery Door

FOREDECK EQUIPMENT

- Two Maxwell Windlass
- Laid Teak in Windlass Area
- Two Chain Stoppers
- Two Fulford 180kg Anchors
- Two 300' Anchor Chain Ropes
- Watertight Door to Chain Locker
- Jacuzzi (900 gallon) w Sun Pad, Removable Sun Pad Mounts on Bow

AFT DECK

- Located above Cockpit
- Wet Bar to Port, w/ Sink and Refrigeration
- Two Settees w/ Tables
- Rod Holders
- Teak Aft Deck Cockpit leading to Swim Platform
- Teak Swim Platform w/ SS Removable Rails
- Salt and Fresh Water Wash Down
- Watertight Door to Crew Quarters and Machinery Room
- Lazarette Hatch to Steering Rams and Rudder Glands

BELOW WATERLINE

- Bulbous Bow to Reduce Fuel Consumption
- Bulbous Bow to Increase Speed
- Naiad Stabilizers
- Naiad Bow and Stern Thrusters

MACHINERY ROOM

- Access from Aft Cockpit Watertight Door
- Caterpillar C18 ACERT (Two)
- 1,000 Horsepower
- Hours P & S 4,500

- ZF 550A Transmissions
- Cruise Speed 10-12 kts WOT 16 kts

- (2) Northern Lights Generators 60kw & 45kw

- Port 5,709 Hours 45Kw
- Starboard 6,917 Hours 65Kw
- Back up 16Kw
- Naiad Stabilizers
- Naiad Bow & Stern Thrusters
- Sea Chests Strainers
- Racor 1000 Fuel Filters
- Magna Battery Charger
- Sea Recovery 1800 Watermaker
- New Chillers for Air Conditioning
- Underwater Lights Multi-Color
- Three Fuel Tanks Aluminum 2,800 Gallons Total

SALON

- Day Head Aft
- Windows P/S
- Full Levolor Shades
- 60" Flat Screen
- Full Bar Forward w/ Bar Stools
- Settee in Center
- Two Large Sofas
- Ottomans

GALLEY

- Country Kitchen
- Dishwasher
- Viking 5-Burner Stove
- Two GE Profile Ovens
- Two GE Profile Refrigerators / Freezers

- LG Microwave
- Viking Ice Maker
- Center Island Bar
- SS Sinks w/ Disposer
- Teak and Holly Sole

MASTER STATEROOM - FWD LOWER DECK

- Access from Media Room
- Island Queen
- New Carpet
- Flat Screen
- Large Head and Vanity w/ Stall Steam Shower

VIP STATEROOM / MASTER LOUNGE

- Media Room w/ Full Entertainment Electronics and 67" Flat Screen
- Two Sofas, New Carpeting
- Ships Sound System
- 25,000 Watts Sound System
- Custom Sub-Woofers, 54 Speakers, 12 Flat Screens, Networked to Multi-color Underwater Lights and Camera

GUEST STATEROOM - FWD PORT SIDE

- Queen Island Berths
- Head and Vanity w/ Stall Shower
- Flat Screens and Entertainment Electronics

GUEST STATEROOM - AFT PORT SIDE

- Over & Under Bunks
- Head and Vanity w/ Stall Shower
- Flat Screens and Entertainment Electronics

PILOTHOUSE & NAVIGATION

- Located Upper Deck
- Danforth Constellation Compass

- Navigation Systems Furuno Nav Net
- GPS Furuno & Raymarine
- Chart Plotter Furuno
- Video Sounder Furuno
- Radar 2 Furuno
- VHF Two ICOM M602
- Auto Pilot Raymarine ST8002
- Speed / Depth Raymarine ST60
- Engine Controls Kobelt
- Stabilizer Controls
- Bow and Stern Thruster Control
- Pompanette Helm Chair

FLYBRIDGE

- Located Upper Deck
- Danforth Constellation Compass
- Navigation Systems Furuno Nav Net
- GPS Furuno & Raymarine
- Chart Plotter Furuno
- Video Sounder Furuno
- Radar 2 Furuno
- VHF ICOM M602
- Auto Pilot Raymarine ST8002
- Speed / Depth Raymarine ST60
- Engine Controls Kobelt
- Stabilizer Controls
- Bow and Stern Thruster Control

Remarks

LIQUIDITY was rebuilt as new and relaunched in 2010. She has a very high quality interior joinery with a spacious layout for entertaining families and large groups. The aft cockpit gives excellent access to all water sports including fishing and diving.

This yacht offers tremendous value and competes with yachts for quality, accommodations and layout at over twice the price.

Schedule an appointment and see for yourself.

Исключения

При продаже яхты исключаются личные вещи владельца.

Отказ от ответственности

Компания предоставляет описание судна или яхты добросовестно, но не может гарантировать точность этой информации, а также не ручается за техническое состояние. Покупатель должен проинструктировать своих агентов или оценщиков исследовать представленную информацию более подробно, по собственному желанию. Продажа судна или яхты, изменение цены или снятие с продажи будет происходить без предварительного уведомления.

ФОТОГРАФИИ

Jacuzzi - Cover On



Jacuzzi - Cover Off



Bow



Bow



Bow



Walkaround Deck



Pilothouse



Pilothouse



Pilothouse



Main Salon Looking Aft



Main Salon



Main Salon Stand-Up Wet Bar



Skylounge Dining



Skylounge Dining



Skylounge



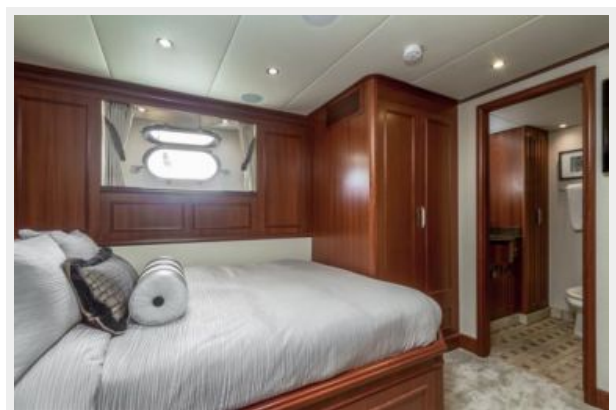
Master Stateroom



Master Stateroom



Master Stateroom



Master Bath



Master Lounge



Master Lounge



Master Lounge



Master Lounge



Guest Stateroom - Fwd.



Guest Stateroom - Fwd.



Guest Bath - Fwd.



Guest Stateroom - Fwd.



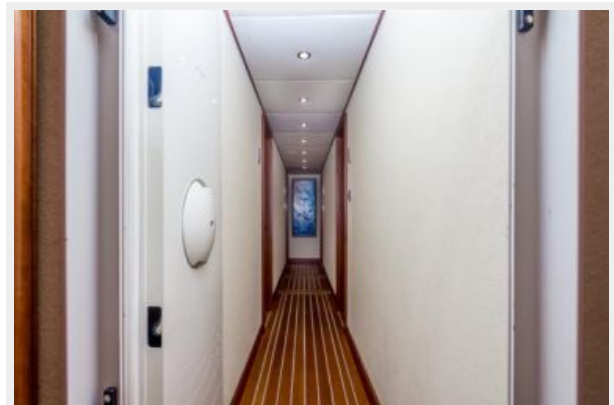
Guest Stateroom - Fwd.



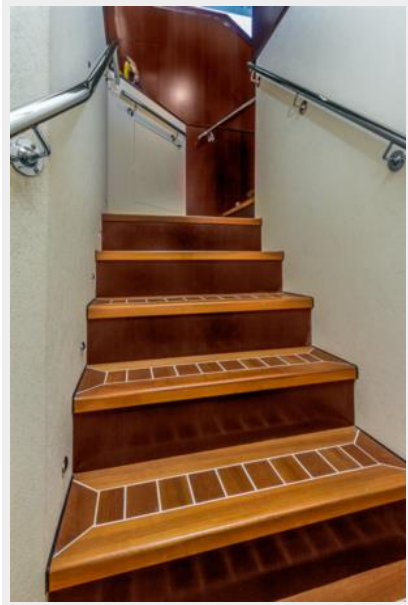
Guest Bath



Hallway to Guest Cabins



Stairs to VIP/Master Lounge



Galley



Galley



Galley



Galley Dining



Galley Dining



Laundry



Crew Quarters



Crew Quarters



Crew Bath



Engine Room



Engine Room



Engine Room



Engine Room



Engine Room



Engine Room



Engine Room



Engine Room



Engine Room



Engine Room



Engine Room



Engine Room



Engine Room



Engine Room



КОНТАКТЫ

Андрей Шестаков (Andrey Shestakov) – ведущий яхтенный брокер отдела продаж яхт и судов компании Shestakov Yacht Sales Inc. Официальный представитель Shestakov Yacht Sales Inc. для русскоговорящих клиентов в центральном офисе компании в Майами/Форт Лодердейл/Флорида/США.

Контактная информация

Email: andrey@shestakovyachtsales.com

Web: shestakovyachtsales.com

Телефоны

Краснодарский край: **+7(918)465-66-44**

США, Майами, Флорида: **+1(954)274-4435**

Время работы

Понедельник – Суббота: **9:00 - 21:00**
EDT

Воскресенье: **Закрыто**

Адрес



Harbour Towne Marina, 850 NE 3rd St,
STE 213, Dania, FL 33004