

GET N CLOSE — C & C YACHTS



Builder: C & C Yachts

Year Built: 1979

Model: Cruising Sailboat

Price: PRICE ON APPLICATION

Location: United States

LOA: 36' 0" (10.97m)

Beam: 11' 6" (3.51m)

Min Draft: 5' 11" (1.80m)

Our experienced yacht broker, Andrey Shestakov, will help you choose and buy a yacht that best suits your needs **Get n Close — C & C Yachts** from our catalogue. Presently, at Shestakov Yacht Sales Inc., we have a wide variety of yachts available on our sale's list. We also work in close contact with all the big yacht manufacturers from all over the world.

If you would like to buy a yacht **Get n Close — C & C Yachts** or would like help answering any questions concerning purchasing, selling or chartering a yacht, please call **+1(954)274-4435**

TABLE OF CONTENTS

TABLE OF CONTENTS	2
SPECIFICATIONS	4
Overview	4
Basic Information	4
Dimensions	4
Speed, Capacities and Weight	5
Accommodations	5
Hull and Deck Information	5
Engine Information	5
DETAILED INFORMATION	6
Overview	6
Exclusions	7
Disclaimer	7
PHOTOS	8
062	8
063	8
064	8
065	8
066	8
067	8
068	9
069	9
070	9
071	9
072	9
073	9
074	10
075	10

077	10
076	10
079	11
078	11
080	11
081	11
082	12
083	12
084	12
085	12
086	12
GetnClose8	12
CONTACTS	13
Contact details	13
Telephones	13
Office hours	13
Address	13

SPECIFICATIONS

Overview

- Manufacturer: C&C Yachts, Inc., Niagara on the Lake, Ontario, CA
- Length Overall: 35' 8"
- Length at waterline: 27' 8"
- Beam: 11' 6"
- Sail area (100% fore triangle): 600 ft²
- Displacement: 12,000 lbs
- Ballast: lead fin keel 5,900 lbs
- Mast Clearance: 51' 6"
- Draft: 5' 11"
- Water Capacity: 2@19 gal each
- Holding tank: 24 gal
- Engine: Yanmar diesel 3QM30H (3 cyl, 30 hp), raw water cooled, overhauled 2010
- Propeller: Flex-o-fold 2 bladed folding prop, 2010
- Cutlass bearing: replaced 2010
- Dripless stuffing box
- Fuel tank: 20 gal

Basic Information

Category: Cruising Sailboat

Model Year: 1979

Year Built: 1979

Country: United States

Dimensions

LOA: 36' 0" (10.97m)

LWL: 27' 8" (8.43m)

Beam: 11' 6" (3.51m)

Min Draft: 5' 11" (1.80m)

Clearance: 51' 6" (15.70m)

Speed, Capacities and Weight

Displacement: 12000 Pounds

Water Capacity: 38 Gallons

Holding Tank: 24 Gallons

Fuel Capacity: 20 Gallons

Accommodations

Total Cabins: 1

Hull and Deck Information

Hull Material: Fiberglass

Engine Information

Engines: 1

Manufacturer: Yanmar

Model: 3QM30H

Engine Type: Inboard

Fuel Type: Diesel

DETAILED INFORMATION

Overview

Accommodation, furnishings, layout

- Double berth port side, single berth starboard settee
- Quarter berth starboard side under cockpit
- Large V-berth with hanging locker and drawers, open shelves both sides, fans; separated from main cabin by bulkhead door.
- Salon has fixed table with folding leafs each side
- Hanging locker starboard side opposite Head
- Navigation table with Lowrance GPS/Chartplotter and Standard Horizon info repeater, compass, electrical panel; hinged top with cabinet below
- Head located port side, with door, mirror, pressurized hot and cold water, sink, shower, wall cabinet.
- Galley has stainless steel sink with pressurized hot and cold water, manual floor pump for cold water, icebox with “Seafrost” freezer which provides refrigeration, HilleRange 3 burner gimbed propane stove with oven.
- Deck pressurized deck wash down system
- Cockpit water sprayer

Electrical and Navigation Equipment

- Two deep cycle marine house batteries (Group 31) and one engine starting battery (Group 24);
- Inverter: Stat Power, 600 watts with one outlet in galley;
- Shore power: two receptacles, one for house circuits and battery charger, one for water heater (not installed);
- Battery charger: “Guest Intelligent Charging System”;
- Battery management system: Link 10
- Sailing instruments: Standard Horizon “150” Wind, Depth, Speed
- VHF radio: ICOM IC-M402
- Chartplotter at helm: Lowrance Global Map 3500C color chartplotter
- Chartplotter at Nav table: Lowrance Global Map1600 B&W
- Autopilot: Raymarine ST4000+ with remote control unit at helmsman position
- Compass: Ritchie
- AM/FM radio

Sails, Rigging and Other Equipment

- Main sail: two, unknown age
- Headsail: 135 Dacron with Sunbrella sun cover; Bierig Sailmaker, 2016
- Spinnakers: one symmetric (2005), one asymmetric (2006); little use on either
- Roller furling unit: Harken
- Spinnaker pole, aluminum
- Standing rigging: Navtec SS rod
- Mast: keel stepped, aluminum, double spreader
- Boom with Garhauer boom vang
- Jib sheet lead block tracks adjustable under load
- Mainsheet: cabin top mounted traveler
- Winches: 7 "Bariant": self-tailing for jib sheets, non-self-tailing for spinnaker sheets, self-tailing for mainsheet on cabin top, 2 non-self-tailing on cabin top for halyards;
- Line control: deck organizers & rope clutches
- Bilge pumps: two electrical pumps in bilge controlled by float switch; two hand operated bilge pumps (one from cockpit, one from inside cabin)
- High water alarm
- Danforth-type anchor with rode
- Bimini top
- Steel cradle for winter storage

Exclusions

Owner's personal belongings.

Disclaimer

The Company offers the details of this vessel or yacht in good faith but cannot guarantee or warrant the accuracy of this information nor warrant the condition of the vessel. A buyer should instruct his representatives, agents, or his surveyors, to investigate such details as the buyer desires validated. This vessel or yacht is offered subject to prior sale, price change, or withdrawal without notice.

PHOTOS

062



063



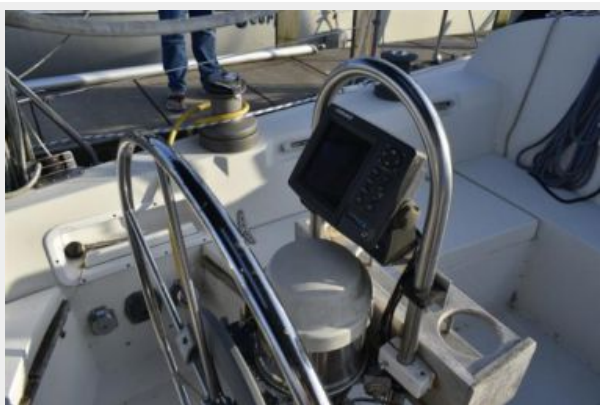
064



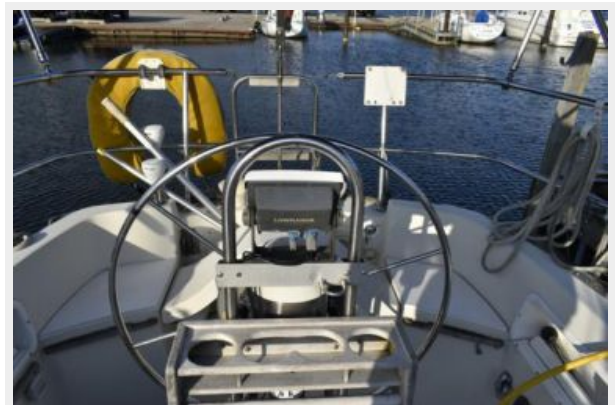
065



066



067



068



069



070



071



072



073



074



075



077



076



078



079



080



081



082



083



084



085



086



GetnClose8



CONTACTS

Andrey Shestakov, leading yacht broker of the sales department of Shestakov Yacht Sales Inc. Shestakov Yacht Sales Inc., the official representative of the Miami/Fort Lauderdale FL headquarters.

Contact details

Email: andrey@shestakovyachtsales.com

Web: shestakovyachtsales.com/en/

Telephones

USA: +1(954)274-4435

Office hours

Monday – Saturday: **9:00 - 21:00** EDT

Sunday: **closed**

Address



Harbour Towne Marina, 850 NE 3rd St,
STE 213, Dania, FL 33004