

# 80 SUNREEF POWER HULL #11 — SUNREEF



**Builder:** [SUNREEF](#)

**Year Built:** 2022

**Model:** Catamaran

**Price:** PRICE ON APPLICATION

**Location:** Poland

**LOA:** 80' 0" (24.38m)

**Beam:** 39' 4" (11.99m)

**Min Draft:** 0' 0" (0.00m)

**Max Draft:** 5' 7" (1.70m)

**Cruise Speed:** 12.5 Kts. (14 MPH)

**Max Speed:** 24 Kts. (28 MPH)

Our experienced yacht broker, Andrey Shestakov, will help you choose and buy a yacht that best suits your needs 80 Sunreef Power Hull #11 — SUNREEF from our catalogue. Presently, at Shestakov Yacht Sales Inc., we have a wide variety of yachts available on our sale's list. We also work in close contact with all the big yacht manufacturers from all over the world.

If you would like to buy a yacht 80 Sunreef Power Hull #11 — SUNREEF or would like help answering any questions concerning purchasing, selling or chartering a yacht, please call **+1(954)274-4435**

---

# TABLE OF CONTENTS

---

TABLE OF CONTENTS	2
SPECIFICATIONS	3
Overview	3
Basic Information	3
Dimensions	3
Speed, Capacities and Weight	3
Accommodations	4
Hull and Deck Information	4
Engine Information	4
DETAILED INFORMATION	5
Overview	5
Proposed Options List for Hull #11	5
Fuel Curve and Speed/Range	17
Exclusions	18
Disclaimer	18
PHOTOS	20
Screen Shot 2020-06-03 at 11.04.04 AM	27
CONTACTS	28
Contact details	28
Telephones	28
Office hours	28
Address	28

# SPECIFICATIONS

## Overview

Hull #11 of the popular 80 Sunreef Power is available with 2022 delivery.

The technical details outlined in this brochure include the preferred upgraded 1200hp MAN engines (\$525,000 option), preferred layout suggested by the shipyard which is 4 guests cabins sleeping 8 + 2 separates crew accommodations sleeping 3

## Basic Information

<b>Category:</b> Catamaran	<b>Model Year:</b> 2022
<b>Year Built:</b> 2022	<b>Country:</b> Poland
<b>Vessel Top:</b> Hardtop	<b>Fly Bridge:</b> Yes
<b>Cockpit:</b> Yes	

## Dimensions

<b>LOA:</b> 80' 0" (24.38m)	<b>LWL:</b> 0' 0" (0.00m)
<b>LOD:</b> 0' 0" (0.00m)	<b>Beam:</b> 39' 4" (11.99m)
<b>Min Draft:</b> 0' 0" (0.00m)	<b>Max Draft:</b> 5' 7" (1.70m)
<b>Clearance:</b> 0' 0" (0.00m)	<b>MFG Length:</b> 0' 0" (0.00m)

## Speed, Capacities and Weight

<b>Cruise Speed:</b> 12.5 Kts. (14 MPH)	<b>Cruise Speed Range:</b> 3500
<b>Max Speed:</b> 24 Kts. (28 MPH)	<b>Water Capacity:</b> 422.6752832 Gallons
<b>Fuel Capacity:</b> 2641.72052 Gallons	

---

## Accommodations

---

**Total Cabins:** 4

**Sleeps:** 8

**Total Heads:** 5

**Crew Cabin:** 2

**Crew Sleeps:** 3

**Crew Heads:** 2

---

## Hull and Deck Information

---

**Hull Material:** GRP

---

## Engine Information

---

**Engines:** 2

**Manufacturer:** MAN

**Engine Type:** Inboard

**Fuel Type:** Diesel

# DETAILED INFORMATION

## Overview

Hull #11 is available with a 2022 giving her excellent retail value when considering her pricing and looking at what ARIA, the 2019 Hull #1 recently sold.

Final delivery dates are will be determined once contracts are finalized.

The technical details outlined in this listing include almost every major option available but a client can still add or remove specific options at this stage of construction.

The general arrangement layout shown in this brochure is the preferred layout suggested by both Sunreef & myself after spending significant amount of time on ARIA and seeing what can be improved upon. This can also be changed by the client but is time sensitive.

## Proposed Options List for Hull #11

MODEL  
VERSION

Sunreef 80Y Galley  
down (fully open saloon,  
maser cabin down, VIP  
cabin, 2x guest cabin,  
crew cabin)

FEATURES  
INCLUDED

Standard

Hulls, deck, flybridge and all structural bulkheads constructed of E-glass sandwich laminate with reinforcement by infusion process. Hull outer osmosis protection in vinylester resin

Navigation station on flybridge and in saloon

Hydraulic aft platform for tender up to 800kg

1 - GENERAL  
OPTIONS

1.2

Hydraulic aft platform

2 -	upgrade to 1200kg	
MECHANICS		
Standard		<p>2 engines John Deere 6135AFM85 (575hp) with propellers</p> <p>Stainless steel shafts</p> <p>2 fuel tanks of 5000L each</p> <p>Engine speed controls on flybridge and in saloon</p> <p>Engine room sound insulation</p>
Options		
	2.3	2 engines 1200hp (MAN) with pair of propellers instead of 575hp John Deere
	2.4	Extension of fuel tanks to 2x 8000L (from 2x 5000L)
	2.5	2 electric pumps for changing the oil
	2.6	Antivibration system (thrust bearing with CV joint)
	2.7	Bow thrusters (2 pcs)
	2.8	JMS System (needs option bow thrusters)
	2.9	Proportional thrusters (needs option 2.7)
	2.10	Trolling valves on gearboxes
	2.11	Water sensors for fuel filters
	2.12	Fuel polishing system, one unit
	2.13	Rope cutters on the propeller shafts

### 3 - DECK GEAR

## Standard

Manual gangway  
 Flush hatches on deck for forepeaks  
 1 swim ladder on the skirt  
 2 aft capstans for mooring  
 Garage for water toys

## Options

- 3.1 Composite hard top  
 bimini on the flybridge  
 with windows and  
 integrated lights
- 3.2 Bimini windshield -  
 transparent canvas only  
 for the front
- 3.3 Bimini windshield -  
 transparent canvas for 3  
 more sides
- 3.4 Rigid wave breaking  
 window on flybridge
- 3.5 Upgrade to hydraulic  
 gangway
- 3.6 Shower head on the  
 cockpit ceiling with  
 mixing valve
- 3.7 Covers set (navigation  
 station, flybridge tables)
- 3.8 Jetski launching system  
 for garage
- 3.9 6x retractable Stainless  
 Steel Seasmark B400x  
 Cleats instead of  
 standard one

4 -  
 ELECTRICAL  
 SYSTEMS

## Standard

AC-230V 50Hz 1ph: main switchboard  
 with panel extension (semi-automatic  
 change over shore-generators), 2  
 chargers (24V/100A), inverter

(220V/50Hz/5000W), 2x shore power inlet 63A, 3x socket (230 V) in cabins, 4 sockets in saloon, 4 in dining area, 4 in galley  
 DC-24V: main switchboard, house batteries (24V/800Ah), starting batteries, DC distribution, wiring  
 Generator 19KVA  
 Additional Inverter 120V/60Hz/3000W + 10 sockets

## Options

- 4.1 Upgrade DC-24V: main switchboard, upgrade to 1200Ah from 800Ah
- 4.2 Additional Inverter 230V/50Hz/5000W
- 4.3 Additional Charger Skylla 24V/100A
- 4.4 Additional Charger for engine starting batteries, one on each side
- 4.5 2x alternator 24V/110A
- 4.6 50/60Hz shore connection kit ASEA frequency converter
- 4.7 Additional Generator 19KVA
- 4.8 Additional Generator 27KVA
- 4.9 Generator upgrade from 19KVA to 27KVA
- 4.10 Upgrade to 2 parallel working gensets 2x 20,5KVA 50Hz 230V
- 4.11 Upgrade to 2 parallel working gensets 2x 28KVA 50Hz 230V

## 5 - LIGHTS

### Standard

Lights with LED lamps



Domotic system for lights, controls, and D/C system, including dimmers for ceiling lights (Domotic system function):Control:- Lighting with dimming- Navigation lights- Control of valves and pumps of black waterMeasurement:- Tank level monitoring with alarm: fresh water, black water, fuel- Battery and Victron charger monitoring with alarm: starter/ main batteries bank/ emergency batteries (if installed)- Measurement of temperature in the engine room

Lights in the engine rooms

Exterior lighting package, upgrade from standard (underlighting of fixed furniture on flybridge and cockpit - LED stripe in white; cockpit ceiling two LED stripes surrounding in white; LED white stripes instead of spot lights on skirts)

## Options

- 5.1 Underwater lights LED, one color to be chosen along with localization: white or blue (price per unit)
- 5.2 Underwater lights LED RGBW, localization to be chosen (price per unit)

## 6 - NAVIGATION & ELECTRONICS

### Standard

Compass (size 135mm)

Chronometer and barometer

Navigation pack Raymarine: 2x Axiom PRO 9', Radar RD418HD 18" 4kW 456mm digital radome radar, evolution autopilot, AIS700, depth, speed & temp sensor, wind sensor, GPS, Ray90 VHF with dual station, searchlight + control

unit, fog horn

## Options

- Upgrade RAYMARINE:  
2x Axiom XL 16", Radar  
RD424HD 24" 4kW  
608mm digital radome  
radar, evolution
- 6.2 autopilot, AIS700, depth,  
speed & temp sensor, ,  
wind sensor, GPS,  
Ray90 VHF with dual  
station, searchlight +  
control unit, fog horn
- 6.3 Wireless autopilot  
controller
- 6.4 Satellite Communication  
System Fleet One  
Cobham Sailor  
(including 3 years  
unlimited satellite data  
(speed 150 Kb/s) when  
out of GSM range and  
GSM data 3 and 4G  
(5GB/month high speed  
then unlimited 80Kb/s) in  
145 country including  
caribbean and 1000 Min  
voice via satellite
- 6.5 Upgrade of option 6.4  
with 1TB Data Pack  
GSM 3 and 4G High  
speed (To be used  
within 24 Months)
- 6.6 Satellite Communication  
System Inmarsat Fleet  
Xpress (Antenna  
Cobham Sailor 60GX  
and Cobham Sailor  
Fleetbroadband 250)  
This pack allows to have  
unlimited monthly data

- 6.7 subscription worldwide  
by satellite with  
possibility of streaming  
on a very low cost  
4G/LTE Wifi antenna  
worldwide
- 6.8 Satellite TV antenna  
KVH TV6
- 6.9 External cameras with  
color and night vision- 2  
pcs

## 7- PLUMBING

### Standard

Fresh water: 2x 800L with level indicators, pressurized pump, 2 water heaters of 100L each

Black water: 1x 500L tank with pump discharge system, electric pump

4 electrical bilge pumps

2 manual bilge pump

Hand shower on deck

1 pressurized fresh water outlet on cockpit (female quick-coupling snap connector)

Electric toilets 24V in bathrooms with fresh water flush

### Options

- 7.1 Watermaker 95l/h - 24V
- 7.2 Watermaker 280l/h –  
230V
- 7.3 1 grey water tank 800L  
with electric pumps of  
additional extraction and  
piping installation (max  
two grey water tanks  
possible)
- 7.4 Upgrade black water  
tanks to 2x 500L
- 7.5 Fresh water inlet  
(connection between the

- 7.6 boat's water network and  
the shore water supply)  
Fresh water outlet for  
washing the deck
- 7.7 Retractable hose (5mb)  
with shower head in  
chain locker for chain  
wash
- 7.8 Additional Bilge pump in  
both forepeaks

## 8 - COMFORT ON BOARD

### Standard

Electric blinds (plisse) in saloon  
Manual roman blinds in cabins  
Curtains and backdrop for entrance  
door  
Air conditioning installation in the  
saloon, galley and cabins: 70 000  
BTU/h  
Galley appliances package (Bosch  
or/and Siemens): refrigerator with  
freezer, dishwasher, electric oven,  
electric stove cooker hood  
Washer&dryer (one item) (Bosch or  
Siemens)  
Sunpad area on aft flybridge  
Stainless steel sliding entrance door  
Pantograph electric door to front deck

### Options

- 8.1 Generalities
- 8.1.1 Electrically recessed  
blinds (plisse) in cabins
- 8.2 Electrical  
appliance
- 8.2.2 Upgrade Air  
Conditioning to 170 000  
BTU/h  
Galley appliances

	8.2.3	upgrade to Miele Washing machine and dryer as separate units	
	8.2.4	Miele, upgrade from standard	
	8.2.5	Wine cooler in the saloon	
8.3	Leisure items		
	8.3.1	Widescreen LED TV 43” with installation (saloon)	
	8.3.2	Widescreen LED TV 55” with installation (saloon)	
	8.3.3	Lifting system up/down (if possible depend on layout)	
	8.3.4	Lifting system for TV under ceiling with swivel (TV up to 55”)	
	8.3.5	Hi-Fi Pack 1: for saloon or/and outdoor	
	8.3.5.1		Yamaha Home Cinema Receiver 7.2 + 5x ceiling speakers + 1x active subwoofer
	8.3.5.2		2 waterproof speakers in the cockpit and 4 in the flybridge
	8.3.5.3		4 waterproof speakers on front deck
	8.3.6	Hi-Fi Pack 2: (price per cabin)	
	8.3.6.1		Yamaha Power Network Receiver +2x premium speakers
	8.3.7	LED TV 32” (price per cabin/unit)	
	8.3.8	Terrestrial TV antenna	
	8.3.9	Safe (price per unit)	
	8.3.10	Electric diving compressor 100L/min 90-330bar	
	8.3.11	Diving bottles holder	

- 8.3.12 Multifunctional full-size rest-lounge with foldable backrest
- 8.3.13 Front deck cushions
- 8.3.14 Jacuzzi on the flybridge
- 8.3.15 Waterfall for jacuzzi (requires biminib 3.1, option 3.2 and option 8.3.14)
- 8.3.16 Bar module in cockpit
  - 8.3.16.1 Sink with retractable faucet for the bar module
  - 8.3.16.2 Ice maker for the bar module
  - 8.3.16.3 Low fridge for the bar module
- 8.3.17 Bar module on flybridge
  - 8.3.17.1 Sink with retractable faucet for the bar module
  - 8.3.17.2 Ice maker for the bar module
  - 8.3.17.3 Low fridge for the bar module
  - 8.3.17.4 Electric Stainless Steel BBQ

## 9 - FINISHING

### Standard

Design fee (1 day with interior design + 3 renders - saloon, owner's cabin and owner's head

Interior wall and ceiling panels, sofas, headboards and beds in skai (artificial leather) or easy-clean fabrics\*

Wooden furniture panels category A with mat polyurethan lacquer\*

Vinyl floor in saloon and cabins

Decorative rug/carpet in saloon

Hull and deck in white gelcoat

\*according to individual design

### Options

- 9.1 Wood finished with mat polyester lacquer
- 9.2 Wood finished with gloss polyester lacquer

- 9.3 Upgrade wood from category A to category B
- 9.4 Upgrade wood from category A to category C
- 9.5 Interior upholstered wall and ceiling panels in easy-clean fabrics instead of skai
- 9.6 Interior sofas and cushions in natural leather instead of skai
- 9.7 Wooden floor (plywood + natural veneer) in saloon
- 9.8 Wooden floor (plywood + natural veneer) in cabins
- 9.9 Glued carpets in cabins
- 9.10 Cockpit and skirts covered with teak
- 9.11 Deck covered with teak
- 9.12 Flybridge covered with teak
- 9.13 Hydraulic platform covered with teak
- 9.14 Side of hulls painted in colored gelcoat (light colors)
- 9.15 Side of hulls with high gloss lacquer (color to be decided by customer)
- 9.16 Side of hulls with metalized lacquer (color to be decided by customer)
- 9.17 Fitted forepeak (need option 7.8):
- 9.17.1 Standard: bed with composite painted wall
- 9.17.2 Comfort: bed and bathroom with composite painted wall

De luxe: bed and bathroom with premium finish

9.17.3

9.18 Air condition for forepeak (need air condition installation)

## 10 - SAFETY EQUIPMENT

Standard

Manual fire extinguishing system in the engine rooms

Options

10.1 Complete rescue equipment with life-rafts for 12 persons

10.2 Adaptation to commercial requirements, MCA cat 0 (Red Ensign)

10.3 Adaptation to commercial requirements, Malta Commercial Code 2015 – Sea area 2 (Maltese flags)

10.4 Automatic fire extinguishing system in the engine rooms (included in commercial adaptation)

10.5 Gas detection system + alarm (included in MCA)

10.6 EPIRB (included in option MCA)

10.7 Satellite tracking system (excluding fees)

## 11 - MOORINGS & TOOLS

Standard

Windlass 3000W 24V



Anchor CQR 81kg + 80m galvanized chain (diameter 14mm)  
 Additional anchor 20kg + 20m galvanized chain (diameter 10mm)

## Options

- |      |  |
|------|--|
| 11.1 | 50m tow line   |
| 11.2 | Windlass upgrade to 3500W, anchor CQR 90kg + 100m galvanized chain (diameter 14mm) |
| 11.4 | Mooring set (8x fender, 4x mooring rope)   |

## 12 - STEERING SYSTEM

Bronze rudders  
 Steering wheel  
 Hydraulic steering system  
 2 emergency tillers

## 13 - LAUNCHING

- |      |  |
|------|--|
|      | Launching, name and hailing port inscriptions, Polish export fees                              |
| 13.1 | Antifouling (with Epoxy primer)  |
| 13.2 | Sunreef representative on board for 3 days, till Kiel Channel (incl. crew return travel cost)* |

OPTIONS:  
 day head on the cockpit

## Fuel Curve and Speed/Range

Hull #8 is available with upgraded propulsion package (MAN V8-1200hp engines).

This gives her the flexibility of a high top speed of 24 knots and to me the more important feature

being her low fuel consumption and impressive range at economical speeds.

Listed below is a detailed charter showing her speed, fuel burn and ranges at all levels of engine performance.

% rpm	Speed (kn)	Engine Power (kW)	Engine (rpm)	Fuel Burn (L/h)	Range (Nm)	Yacht Autonomy (L/nm)
100%	21.5	882	2300	230	639	21.4
96%	20.5	882	2200	200	701	19.5
91%	19.5	882	2100	180	741	18.5
87%	19.0	845	2000	158	823	16.6
83%	18.5	805	1900	135	937	14.6
78%	18.2	755	1800	120	1037	13.2
74%	17.7	710	1700	105	1153	11.9
70%	17.4	675	1600	86	1384	9.9
65%	17.0	625	1500	73	1593	8.6
61%	16.6	585	1400	60	1892	7.2
57%	16.1	540	1300	50	2202	6.2
52%	15.7	504	1200	43	2497	5.5
48%	14.4	435	1100	35	2814	4.9
43%	13.3	285	1000	32	2843	4.8

## Exclusions

Owner's personal belongings.

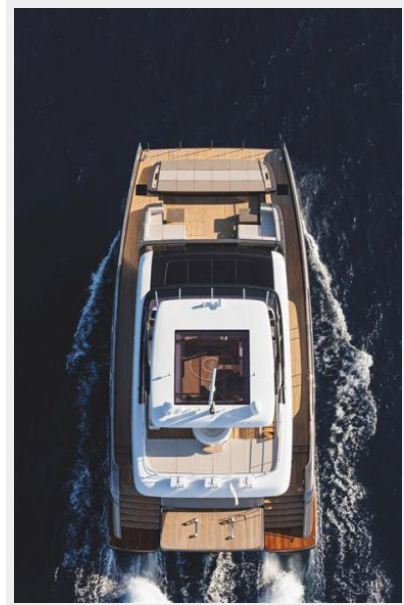
## Disclaimer

The Company offers the details of this vessel or yacht in good faith but cannot guarantee or warrant the accuracy of this information nor warrant the condition of the vessel. A buyer should

instruct his representatives, agents, or his surveyors, to investigate such details as the buyer desires validated. This vessel or yacht is offered subject to prior sale, price change, or withdrawal without notice.

# PHOTOS



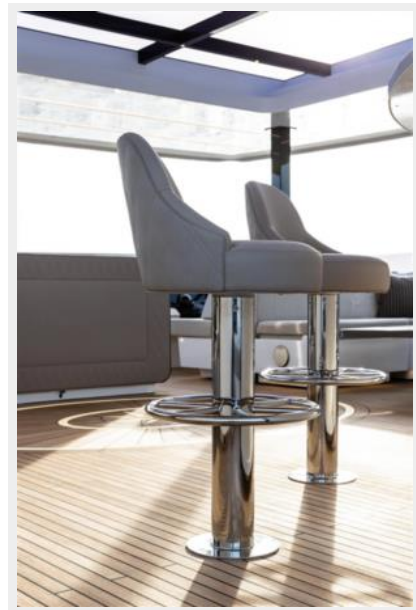


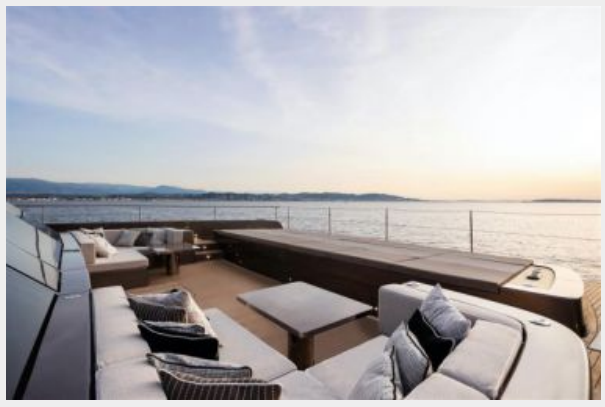






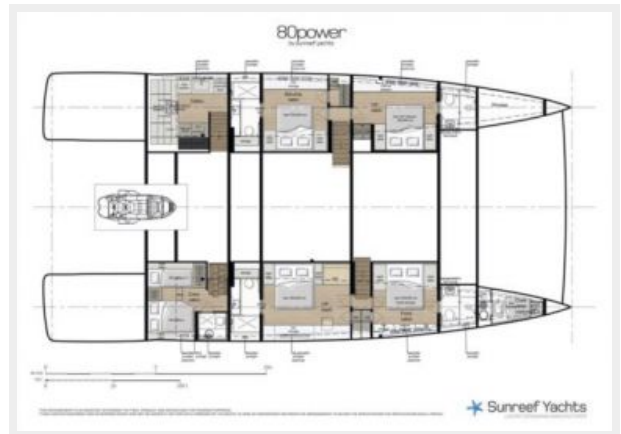








Screen Shot 2020-06-03 at 11.04.04 AM



# CONTACTS

---

Andrey Shestakov, leading yacht broker of the sales department of Shestakov Yacht Sales Inc. Shestakov Yacht Sales Inc., the official representative of the Miami/Fort Lauderdale FL headquarters.

## Contact details

---

Email: [andrey@shestakovyachtsales.com](mailto:andrey@shestakovyachtsales.com)

Web: [shestakovyachtsales.com/en/](http://shestakovyachtsales.com/en/)

## Telephones

---

USA: +1(954)274-4435

## Office hours

---

Monday – Saturday: **9:00 - 21:00** EDT

Sunday: **closed**

## Address

---



Harbour Towne Marina, 850 NE 3rd St,  
STE 213, Dania, FL 33004