

BELEZA — CHEOY LEE



Builder: CHEOY LEE

Year Built: 1983

Model: Motorsailer

Price: PRICE ON APPLICATION

Location: United States

LOA: 63' 0" (19.20m)

Beam: 18' 6" (5.64m)

Max Draft: 6' 6" (1.98m)

Cruise Speed: 9 Kts. (10 MPH)

Max Speed: 12 Kts. (14 MPH)

Our experienced yacht broker, Andrey Shestakov, will help you choose and buy a yacht that best suits your needs **Beleza — CHEOY LEE** from our catalogue. Presently, at Shestakov Yacht Sales Inc., we have a wide variety of yachts available on our sale's list. We also work in close contact with all the big yacht manufacturers from all over the world.

If you would like to buy a yacht **Beleza — CHEOY LEE** or would like help answering any questions concerning purchasing, selling or chartering a yacht, please call **+1(954)274-4435**

TABLE OF CONTENTS

TABLE OF CONTENTS	2
SPECIFICATIONS	7
Overview	7
Basic Information	7
Dimensions	7
Speed, Capacities and Weight	7
Accommodations	7
Hull and Deck Information	8
Engine Information	8
DETAILED INFORMATION	9
Accommodations	9
Galley	11
Electronics and Navigation	12
Electrical Equipment	12
Deck Equipment	13
Sails and Rigging	14
Mechanical Equipment	14
Upgrades	15
Remarks	17
Exclusions	17
Exclusions	17
Disclaimer	17
PHOTOS	18
P1060573	18
P1060577	18
P1060580	18
P1060585	18
P1060588	18

P1060599	18
P1060600	19
P1060602	19
P1060603	19
P1060604	19
P1060608	19
P1060610	19
P1060614	20
P1060616	20
P1060620	20
P1060622	20
P1060626	20
P1060625	20
P1060630	21
P1060627	21
P1060631	21
P1060633	21
P1060634	22
P1060637	22
P1060638	22
P1060639	22
P1060640	23
P1060641	23
P1060642	23
P1060643	23
P1060647	23
P1060645	23
P1060648	24
P1060650	24

P1060651	24
P1060652	24
P1060653	24
P1060655	24
P1060657	25
P1060658	25
P1060659	25
P1060660	25
P1060665	25
P1060667	25
P1060668	26
P1060669	26
P1060670	26
P1060671	26
P1060673	26
P1060674	26
P1060682	27
P1060683	27
P1060685	27
P1060688	27
P1060690	27
P1060691	27
P1060695	28
P1060694	28
P1060696	28
P1060697	28
P1060699	28
P1060701	28
P1060704	29

P1060702	29
P1060707	29
P1060709	29
P1060710	30
P1060712	30
P1060714	30
P1060713	30
P1060715	31
P1060717	31
P1060718	31
P1060719	31
P1060724	31
P1060725	31
P1060726	32
P1060728	32
P1060729	32
P1060730	32
P1060732	33
P1060733	33
P1060734	33
P1060735	33
P1060736	33
P1060737	33
P1060739	34
P1060738	34
P1060740	34
P1060742	34
CONTACTS	35
Contact details	35

Telephones	35
Office hours	35
Address	35

SPECIFICATIONS

Overview

Only nine of these rare, unique, passage makers were ever built and fewer have had such a high degree of maintenance and continual upgrades. This outstanding example won't last long and can be bought at a fraction of what a new build would cost today. You won't be disappointed.

Basic Information

Category: Motorsailor

Sub Category: Motorsailor

Model Year: 1983

Year Built: 1983

Country: United States

Dimensions

LOA: 63' 0" (19.20m)

Beam: 18' 6" (5.64m)

Max Draft: 6' 6" (1.98m)

Speed, Capacities and Weight

Cruise Speed: 9 Kts. (10 MPH)

Cruise Speed Range: 1800

Max Speed: 12 Kts. (14 MPH)

Displacement: 98500 Pounds

Water Capacity: 475 Gallons

Fuel Capacity: 2800 Gallons

Accommodations

Total Cabins: 4

Total Heads: 4

Hull and Deck Information

Hull Material: Fiberglass

Engine Information

Engines: 2

Manufacturer: Caterpillar

Model: 3208

Engine Type: Inboard

Fuel Type: Diesel

DETAILED INFORMATION

Accommodations

Cheoy Lee has had a tradition of excellence since their humble beginnings in 1870. Originally a commercial boat builder and repair of steam powercraft vessels, the original Lo Family moved from their Shanghai location to the British colony of Hong Kong in 1936. They eventually evolved from power cargo craft into the production of teak sailing and motor yachts in the 1950s. As exports increased to the USA market they pioneered in the development, testing, and use of fiberglass construction. By the mid 60s 90% of Cheoy Lee's production was pleasure craft. Eventually Cheoy Lee became a forerunner in the use of GRP/foam sandwich construction. In the mid 70s they produced the largest GRP motorsailor of its time at 130'. Now the fourth and fifth generations of the Lo Family are still producing sophisticated vessels of steel, aluminum, and fiberglass.

Following the success of the 43' and 52' trawler long range motorsailor, Cheoy Lee Shipyards Ltd. created the ultimate long range motorsailor, the Cheoy Lee 63'. As her name implies, she is truly a world class cruising vessel and there was no other vessel produced like her. The naval architects Seaton-Neville were commissioned to create this exceptional motorsailor. The parameters around which the architects designed the 63' were an impressive performer with speed and agility under both sail and power, luxurious accommodations for long range passage-making and graceful styling.

Beleza has benefited from the last three incredibly knowledgeable owners who treated the vessel with an open checkbook policy. This vessel has had three major refits allowing her to present herself today as if she just rolled out of the production shop.

In 2011 the vessel went into the Hunter service yard for a total makeover. The interior was gutted and rebuilt in Brazilian mahogany and red cedar. The exterior was painted and all the sails were replaced. All salon and pilothouse window frames were replaced.

After several years sailing the Carribean and South Florida, the vessel was sold in January 2015. The vessel went back into the yard in South Florida. All the electronics were replaced, all rigging was inspected and replaced or upgraded. A second new Northern Lights 9 kw generator was installed. The single combo washer was replaced with a separate washer and dryer. A second freezer was installed in the laundry room. Additional 2015 upgrades included two new Garmin chart plotter/radar/sounder units, new Garmin autopilot, Garmin speed/distance log, engine room camera, and a new 8 person Revere life raft was installed.

The same owner made a passage with the vessel up to the Chicago area where the vessel has enjoyed fresh water for the last 5 years and annual haul out for winter storage. Each year the vessel was hauled the mast and booms were removed for storage and a fresh coat of bottom paint was applied.

In 2018 during winter storage a new Side Power bow thruster was installed with a dedicated

battery and charging system. The hull bottom was blasted and received 2 coats of epoxy, 7 coats of Interlux primer, and finished with semi ablated interlux micron paint. The generator and engine batteries were replaced. The mast and boom were also painted. All head hoses were inspected along with replacing the Master Stateroom and Forward Stateroom heads. There is also a new complete head in a box. All interior and exterior lights were upgraded to LEDs. Other upgrades included a new KVH Sat TV system, new portable ice maker, and toaster oven.

During the 2019 haul out and winter storage, the vessel benefited from another major retrofit.

The entire hull was stripped and painted with Awl Grip and new boot stripe. The finish was professionally sprayed by members of the Burger Yard. As always the bottom was re-coated. A few other items of the extensive list includes a new 16000 BTU air conditioner for the forward cabins, new 4 stroke outboard for the tender, new overhead cooling insulation in the Galley and Salon, and upgrades on the soft goods throughout the vessel. There was a new custom removable enclosure fabricated for the aft deck seating area.

Sitting majestically dock side, this ocean voyager at first glance presents herself as almost new. The highly waxed cabin house, gleaming chrome, and the glistening varnish accents are a tribute to an owner who maintains this craft with an open checkbook policy. The stainless steel rails that encircle the deck provide safety underway and the convenient midship and aft deck gates allow for easy boarding. The wide teak decks insure safe footing all around. The windows around the cabin deck and pilothouse provide great visibility and ample light below. When going to the forward deck you will see a very capable Lowfrans windlass securing the two massive naval stock anchors. A rigid hull inflatable with a new Honda 4 stroke makes easy access to any island you are anchored off of. The raised aft helm deck provides an unobstructed 360 degree view for the captain and crew. The large u-shaped aft deck settee makes an excellent place for an afternoon lunch, dining under the stars, or just a lazy day of reading.

When entering the roomy pilothouse you will encounter a well laid out command center. The portside helm provides great viewing through all the large cabin windows. The forward windshield has two wipers and a vented center window.

All the varnished teak wood gives a warm rich feeling. The electronics are all within arms reach and a large counter top next to the helm provides plenty of space for charting your voyage. Aft is a large bench seat with storage below. Several cabinets provide storage along with access to the ships DC distribution panel. The overhead is finished in white panels with teak accent strips and recessed upgraded LED lighting. Other highlights include a Boston Quartz Ships clock, chart locker, vessel angle indicator, brass reading lights, and a new manufactured wood sole.

From the Pilothouse going down 4 steps brings you into the huge salon & galley area. An all new overhead consisting of white panels and teak trim reflect plenty of light around the salon. Forward to port is a huge L shaped settee with storage below. Across to port is another huge L shaped settee with a large teak table top with storage below. The entire cabin sole has been redone in a manufactured wood finish. Other features include curtains all around, book & CD racks, clock & barometer, overhead hand rails, accent lights, and two deck hatches. The galley

is located port side aft of the salon. The u shaped galley boasts new gas stove top, stainless double sink, microwave, refrigerator, and abundant storage.

Forward of the salon down 4 steps is the forward companionway area. This area gives access to the 3 forward cabins and 3 heads. The first cabin to port is your VIP cabin with double berth. This cabin features teak wall coverings, flat screen TV, 2 port lights, deck hatch, reading lights, hanging locker, abundant storage, and enclosed electric head with hand shower faucet. Across to starboard is the 2nd Guest Cabin with a double berth below and a single berth above. This cabin also features deck hatch, hanging locker, flat screen TV, and reading lights. Aft of that cabin is the Day Head with electric toilet and separate stall shower. All the way forward is the 3rd Guest Cabin with over under single berths. As with all the cabins, there are teak wall coverings throughout, lots of storage, deck hatch, two port lights and access to the chain locker. The 3rd Guest Head has a manual toilet so there is always an operational head without any power needed.

The aft companionway provides access to the laundry/work room, engine room, and Master Stateroom. The Work Room includes the clothes washer and dryer, deep freezer, sink, tool box, work counter, A/C distribution panel and storage shelves. An access door to the well lit engine room makes maintenance easy. The dependable 3208 CATs are easily accessed along with all machinery, electrical, fuel and plumbing.

The Master Stateroom all the way aft has a raised island queen berth. There are two huge hanging lockers at the front of the cabin. A vanity with mirrors makes preparing for an evening out easy. The large enclosed head has a shower stall large enough for the entire crew. Appointments include large deck hatch, teak wall coverings, new cabin sole, flat screen TV, 4 port holes and accent lighting.

Galley

- New four burner LPG stove top (2019)
- New overhead ceiling insulation (2019)
- New toaster oven (2018)
- New Splendid clothes washer and dryer (2015)
- New overhead LED lights (2018)
- New galley sole (2015)
- Double stainless steel sink
- LG refrigerator/freezer
- New portable ice maker (2018)
- New 2nd freezer in laundry room (2015)
- Frigidaire microwave oven
- 7 cabinets
- 4 drawers
- (3) 120 v outlets
- Plate and coffee mug rack

- Dome accent lights with LEDs
- Towel rack
- Trash bin
- Filtered water dispenser

Electronics and Navigation

- New forward sonar transducer (2019)
- New XM satellite radio (2019)
- New wind speed and direction sensor (2019)
- New Garmin 12" GPS map, chart plotter, radar, bottom sounder - Pilothouse (2015)
- New Garmin 12" GPS map, chart plotter, radar, bottom sounder - Bridge Helm (2015)
- New Garmin wind and direction gauge - Pilothouse (2015)
- New Garmin speed, distance log - Upper Helm (2015)
- Emergency remote Garmin GPS Map 421 with bracket at Upper and Lower helm
- Autopilot hand held remote on tether
- New ICOM VHF - Upper Helm (2019)
- New Raytheon VHF - Pilothouse (2015)
- 6" Plastimo compass - Upper Helm
- 6" Plastimo compass - Pilothouse
- (2) new 8" stereo speakers - Aft Deck (2019)
- New AM/FM/CD player - Pilothouse (2018)
- New flat screen TVs - Salon, Master, and Guest Staterooms
- New AIS system (2018)
- New CD player - Salon (2019)
- New WiFi booster (2019)
- New KVH Satellite TV (2017)
- Long range antenna (2017)

Electrical Equipment

- New Northern Lights 9 kw generator (Replaced 2015) with 1064 hrs
- Northern Lights 16 kw generator with 12,350 hrs
- (2) 50 amp shore power receptacles
- Heart interphase 3000 watt inverter
- (5) battery switches
- Battery isolators
- DC distribution Pilothouse
- Main AC DC distribution panel Laundry Room
- New generator battery (2018)
- New engine starting batteries (2018)
- New LED lights throughout vessel

Deck Equipment

- New cap rail canvas (2019)
- New aft deck Eisenglass and sunscreen enclosure (2019)
- New aft deck dinghy davits (2019)
- New Honda 4 stroke outboard (2019)
- New Fortress backup anchor (2019)
- Lofrans double capstan windlass with vertical line winch rebuilt (2018)
- Revere 8 man ocean life raft with hydrostatic release replaced (2015)
- (2) Lebroc helm chairs replaced (2015)
- 12' Rigid hull tender 2010 with new 2019 Honda 4 stroke
- (2) large bow hawse pipes
- (2) huge naval style anchors with thru hull deployment
- (2) heavy duty anchor locking bars
- (2) new 300' lengths of anchor chair (2019)
- (2) 15" bow cleats
- Caprail varnished (2018 and 2019)
- Teak decks
- (3) large forward Bomar hatches
- Stainless steel bow and side deck hand rails with stainless steel safety cable
- Small forward deck hatch
- (7) new Bomar hatch covers with new bug screens (2019)
- (4) Midship 15" cleats
- (4) midship hawse pipes
- (2) deck storage lockers below mast
- (2) large Bomar hatches
- Midship raised helm deck
- New LED flood lights for both deck mast (2018 and 2019)
- Dual trumpet air horns
- Pilothouse window sun screens
- Varnished teak accents around deck house
- Port and starboard teak handrails midship
- Upper helm Bimini top with clear view section for mast observation
- Stainless steel ships steering wheel with grip leather wrap
- Stainless steel stair and raised helm deck hand rails
- Aft deck teak table with stainless pedestals
- Aft deck u-shaped seating for 6 with storage and cushions
- Lazzarette deck hatch to steering equipment
- Removable swim boarding ladder
- Horseshoe life ring aft deck
- Man overboard marker pole aft deck
- (2) Midship and 2 aft deck boarding gates
- All window and frames in pilothouse and Salon replaced (2011)
- Aft deck Bomar hatch to MS

- Aft deck LPG locker for two tanks
- Aft deck light prisms
- Transom teak flag burgee pole
- Aft deck fresh water wash down hose
- (3) aft deck storage lockers with varnished louver doors
- Teak pilothouse door with tempered glass vent window
- Varnished toe rail with stainless steel rub rail insert
- New emergency man overboard ladder (2019)

Sails and Rigging

- Midship and aft hood boom and mast painted Awlgrip (2019)
- Barient #23 winch on mast
- Barient #27 winch on mast
- (2) Pro roller furlings
- Meissner 30 sts winch
- New Lemar winch (2019)
- Trident line tender
- (2) Barient #27 electric winches aft mast 2 speed
- (2) Barient #36 electric winches aft 2 speed
- JIB
- Staysail
- Main sail
- New Whisker Pole (2019)
- New Halyards (2019)

Mechanical Equipment

- New steering couplings (2019)
- New air conditioning raw water pump (2019)
- New 6,000 BTU air conditioner - Forward Bow and Starboard Cabins (2019)
- New engine and generator impellers and zincs (2019)
- New port engine alternator (2019)
- (3) new shower sumps (2019)
- New Side Power bow thruster with hand held remote (2018)
- New electric head port forward (2018)
- New Master Stateroom Electric Head (2018)
- New in-the-box complete electric head (2018)
- New engine room camera (2015)
- Port and starboard shaft packing glands serviced (2018)
- New Pilothouse and Upper Helm instrumentation and sending units (2019)
- New fuel and water gauges and senders (2019)

- New Bilge blowers (2019)
- (3) auto bilge pumps
- Engine alarm
- Vac U Flush head system and Electrosan units
- (4) Marine reverse cycle air conditioning units
- Morse clutch and throttle controls
- Dual Racor Fuel Filters with vacuum gauges for each engine
- Racor fuel filter for each generator
- Emergency engine driven bilge pump
- Aqua Whisper water maker
- Heat and acoustical insulation
- High water alarm
- Huge spare parts inventory

Upgrades

2019:

- Hull painted with Awlgrip
- Boot stripe painted
- Bottom painted again
- New steering couplings
- New air conditioning raw
- Water pump
- New 16,000 BTU air conditioning - Forward Cabins
- New engine and generator
- Impellers and zincs
- Port engine new alternator
- (3) new shower sumps
- New cooling insulation - Pilothouse and Salon
- New LPG stove top
- New forward sonar transducer
- New cap rail canvas
- New aft deck Eisenglass and sunscreen enclosure
- New Master Stateroom queen mattress
- New 2 speed Lewmar winch - Upper Helm
- New dinghy davits
- New Honda 4 Stroke outboard
- New XM satellite radio
- New holding tank transfer
- New emergency man overboard ladder
- New mast head LED light
- New wind and speed indicator

- New Fortress backup anchor
- New Salon cushion covers
- (2) new 300' length anchor chain
- Port and starboard shaft logs repacked
- New ICOM VHF with GPS identifier replaced - Bridge
- New instrument gauges and sending units - Upper and Lower Helms
- New fuel and water gauge and senders
- New aft deck stereo speakers
- New CD player, Salon
- New Wisker pole
- New Halyards
- Cap rail refinished
- Huge spare parts inventory
- New WiFi booster (2019)
- New display chalks
- (7) new Bomar hatch covers
- New Salon window curtains
- New Bomar hatch bug screens

2018:

- New Side Power bow thruster with hand held remote
- Mast and boom painted
- Hull bottom blasted epoxy painted with Interlux 7 coats primer, 2 coats epoxy, semi ablated Interlux micron
- New generator batteries
- New engine starting batteries
- New toaster oven
- New LED interior lights
- New LED deck flood lights
- New portable ice maker
- New electric head port forward
- New Master Stateroom head
- New in-the-box complete head
- New KVH SAT TV antenna (2017)
- Anchor windlass rebuilt
- New AIS system

2015

- New Northern Lights 9 kw
- New Engine Room camera
- New Splendide clothes washer and dryer
- New freezer in Laundry Room
- (2) new Garmin chart plotters, sounders, radars

- New 8 man Revere life raft with hydrostatic release replaced
- New water heater

Remarks

Only a handful of these rare, unique, passage makers were ever built and fewer have had such a high degree of maintenance and continual upgrades. This outstanding example won't last long and can be bought at a fraction of what a new build would cost today. You won't be disappointed.

Exclusions

- Personal effects
- Tools
- Dive gear
- Painting in the Salon

Exclusions

Owner's personal belongings.

Disclaimer

The Company offers the details of this vessel or yacht in good faith but cannot guarantee or warrant the accuracy of this information nor warrant the condition of the vessel. A buyer should instruct his representatives, agents, or his surveyors, to investigate such details as the buyer desires validated. This vessel or yacht is offered subject to prior sale, price change, or withdrawal without notice.

PHOTOS

P1060573



P1060577



P1060580



P1060585



P1060588



P1060599



P1060600



P1060602



P1060603



P1060604



P1060608



P1060610



P1060614



P1060616



P1060620



P1060622



P1060626



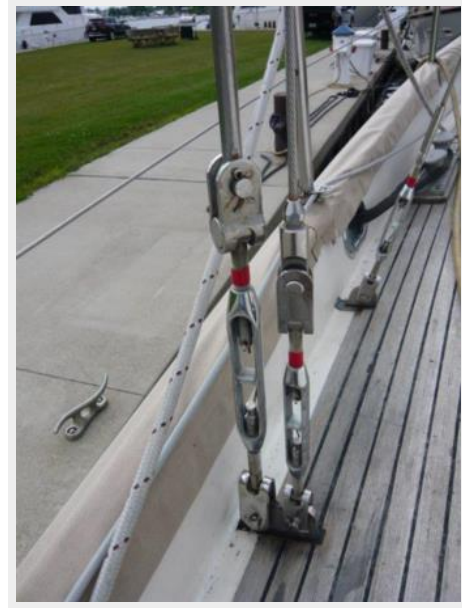
P1060625



P1060627



P1060630



P1060631



P1060633



P1060634



P1060637



P1060638



P1060639



P1060640



P1060641



P1060642



P1060643



P1060647



P1060645



P1060648



P1060650



P1060651



P1060652



P1060653



P1060655



P1060657



P1060658



P1060659



P1060660



P1060665



P1060667



P1060668



P1060669



P1060670



P1060671



P1060673



P1060674



P1060682



P1060683



P1060685



P1060688



P1060690



P1060691



P1060694



P1060695



P1060696



P1060697



P1060699



P1060701



P1060702



P1060704



P1060707



P1060709



P1060710



P1060712



P1060714

P1060713



P1060715



P1060717



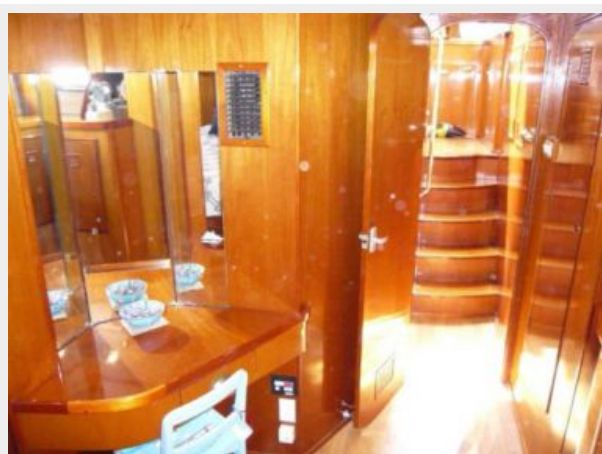
P1060718



P1060719



P1060724



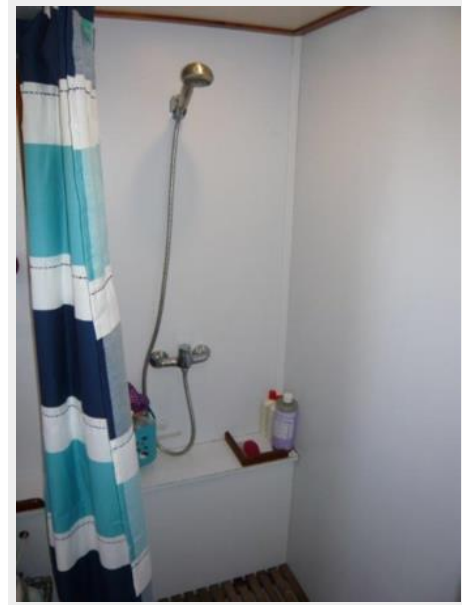
P1060725



P1060726



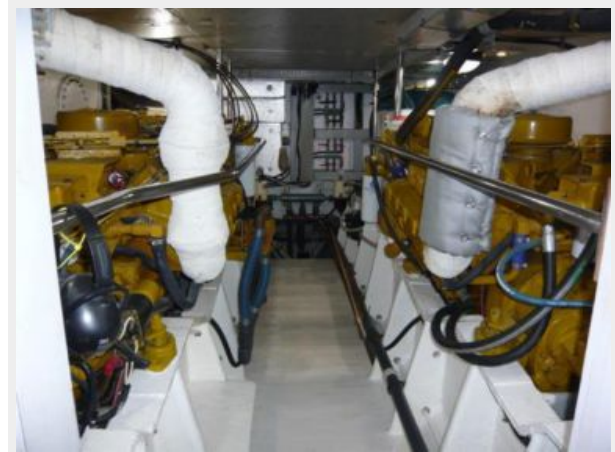
P1060728



P1060729



P1060730



P1060732



P1060733



P1060734



P1060735



P1060736



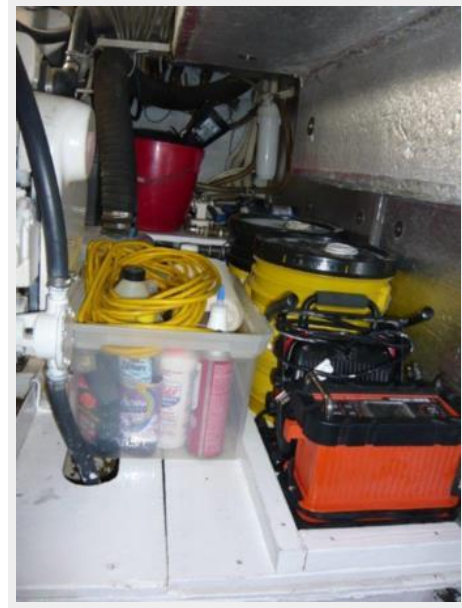
P1060737



P1060738



P1060739



P1060740



P1060742



CONTACTS

Andrey Shestakov, leading yacht broker of the sales department of Shestakov Yacht Sales Inc. Shestakov Yacht Sales Inc., the official representative of the Miami/Fort Lauderdale FL headquarters.

Contact details

Email: andrey@shestakovyachtsales.com

Web: shestakovyachtsales.com/en/

Telephones

USA: +1(954)274-4435

Office hours

Monday – Saturday: **9:00 - 21:00** EDT

Sunday: **closed**

Address



Harbour Towne Marina, 850 NE 3rd St,
STE 213, Dania, FL 33004