

PETUNIA — CAL



Builder: CAL

Year Built: 1984

Model: Sloop

Price: PRICE ON APPLICATION

Location: United States

LOA: 44' 0" (13.41m)

Beam: 13' 5" (4.09m)

Max Draft: 5' 10" (1.78m)

Cruise Speed: 8 Kts. (9 MPH)

Max Speed: 10 Kts. (12 MPH)

Our experienced yacht broker, Andrey Shestakov, will help you choose and buy a yacht that best suits your needs **Petunia — CAL** from our catalogue. Presently, at **Shestakov Yacht Sales Inc.**, we have a wide variety of yachts available on our **sale's list**. We also work in close contact with all the big **yacht manufacturers** from all over the world.

If you would like to buy a yacht **Petunia — CAL** or would like help answering any questions concerning purchasing, selling or chartering a yacht, please call **+1(954)274-4435**

TABLE OF CONTENTS

TABLE OF CONTENTS	2
SPECIFICATIONS	5
Overview	5
Basic Information	5
Dimensions	5
Speed, Capacities and Weight	5
Accommodations	6
Hull and Deck Information	6
Engine Information	6
DETAILED INFORMATION	7
MAIN DESCRIPTION	7
44' CAL HULL AND DECKS	7
44' CAL ON DECK AND COCKPIT	7
44' CAL SAILS AND RIGGING	7
44' CAL ANCHORING	8
44' CAL ELECTRONICS	8
44' CAL ENGINE AND MECHANICAL	8
44' CAL ELECTRICAL	8
44' CAL GALLEY	8
44' CAL ACCOMODATIONS	9
44' CAL SAFETY EQUIPMENT	9
DISCLAIMER	9
Exclusions	9
Disclaimer	9
PHOTOS	10
1	10
2	10
petunia_4_edited	10

petunia_5_edited	10
petunia_7_edited	11
petunia_6_edited	11
petunia_8_edited	11
petunia_9_edited	11
petunia_10_edited	11
petunia_11_edited	11
petunia_12_edited	12
petunia_13_edited	12
petunia_15_edited	12
petunia_14_edited	12
petunia_16_edited	13
petunia_17_edited	13
petunia_18_edited	13
petunia_19_edited	13
petunia_21_edited	14
petunia_20_edited	14
petunia_22_edited	14
petunia_23_edited	14
petunia_24_edited	15
petunia_25_edited	15
petunia_27_edited	15
petunia_26_edited	15
petunia_29_edited	16
petunia_28_edited	16
petunia_30_edited	16
petunia_31_edited	16
petunia_40_edited	17
petunia_41_edited	17

CONTACTS	18
Contact details	18
Telephones	18
Office hours	18
Address	18

SPECIFICATIONS

Overview

This beautiful blue water boat is ready to go! Equipped with all necessary safety features and comfortable living spaces, this boat is a true liveaboard. Forward private stateroom with large V Berth and owner's private aft cabin with double sized berth, both contain Handcraft Mattresses. Easy access to all machinery, 19' LCD TV, stereo with cabin and cockpit speakers, and plenty of storage drawers, lockers and hanging lockers throughout the boat. Owners have taken meticulously good care of this vessel and she shows it. Clean and equipped with all the electronics necessary to travel anywhere. Loaded with plenty of sails and 860 feet of sail area, "Petunia" will move quickly at 8-10 knots. If you are looking for an adventure, this boat will take you on one!

Basic Information

Category: Sloop

Model Year: 1984

Year Built: 1984

Country: United States

Dimensions

LOA: 44' 0" (13.41m)

LWL: 38' 1" (11.61m)

Beam: 13' 5" (4.09m)

Max Draft: 5' 10" (1.78m)

Speed, Capacities and Weight

Cruise Speed: 8 Kts. (9 MPH)

Max Speed: 10 Kts. (12 MPH)

Displacement: 25300 Pounds

Water Capacity: 200 Gallons

Holding Tank: 35 Gallons

Fuel Capacity: 80 Gallons

Accommodations

Total Cabins: 2

Total Berths: 4

Total Heads: 2

Hull and Deck Information

Hull Material: Fiberglass

Engine Information

Engines: 1

Manufacturer: westerbeke

Model: 58

Engine Type: Inboard

Fuel Type: Diesel

DETAILED INFORMATION

MAIN DESCRIPTION

This beautiful blue water boat is ready to go! Equipped with all necessary safety features and comfortable living spaces, this boat is a true liveaboard. Forward private stateroom with large V Berth and owner's private aft cabin with double sized berth, both contain Handcraft Mattresses. Easy access to all machinery, 19' LCD TV, stereo with cabin and cockpit speakers, and plenty of storage drawers, lockers and hanging lockers throughout the boat. Owners have taken meticulously good care of this vessel and she shows it. Clean and equipped with all the electronics necessary to travel anywhere. Loaded with plenty of sails and 860 feet of sail area, "Petunia" will move quickly at 8-10 knots. If you are looking for an adventure, this boat will take you on one!

44' CAL HULL AND DECKS

Bottom sealed with epoxy resin in 07', then sprayed with Interlux Interprotect 2000/2001. Bottom Paint in 2018 with sprayed Trinidad SR. 6 Hatches and 9 opening ports sealed with Awlgrip. Non-opening ports are 1/2" Lexan. Topsides are Awlgrip finished. Teak is sealed with epoxy and finished with Awlgrip. Deck is Awlgrip finished.

44' CAL ON DECK AND COCKPIT

Deck is painted with Awlgrip. (07) Teak is sealed with epoxy and finished with Awlgrip All Deck Hardware was removed, re-polished and re-bedded in 07' House is painted with Awlgrip 07' New 1/2" Lexan House Non-Opening Ports Stainless Arch at Transom Sovereign Stainless Barbeque Monitor Self Steering Vane Cockpit Shower 48" Elk Hyde Stainless Destroyer Wheel Kato Stainless Davits Kato Stainless Out Board Motor Lift Sunbrella Bimini Sunbrella Dodger over hatch only Bridge Deck with Cushions Cockpit Cushions Awnings Stainless Stanchions Stainless Lifelines Replaced in 07' E-90 Raymarine Chartplotter mounted in Nav Pod at Helm Raymarine Wind, Speed and Depth Mounted in Nav Pod at Helm

44' CAL SAILS AND RIGGING

Doyle full batten main with 2 reefs and spectra lazy jacks Doyle 120% genoa with Harken roller furling Doyle cruising spinnaker with ATN sock Nylon reacher with ProFurl continuous line furler. Storm jib (orange) with hanks for removable forestay (running backstays with Lewmar blocks) Storm trysail Like new 316 Stainless Dyform rigging (07) Mast, boom and spreaders finished in Awlgrip (07) Harken mast track and cars Harken mainsheet traveler track, cars and blocks Harken genoa blocks and cars Separate external track for trysail Forespar line control whisker pole Navtec integral backstay adjuster Running Backstays for use when using the Stays'

44' CAL ANCHORING

Polished Stainless Steel Horizontal Lighthouse Windlass
60 lb. polished stainless Ultra Anchor with 200' 5/16" HT galvanized chain
Fortress FX-37 anchor with 300' 3/4" 8-plait nylon rode and 30' 5/16" HT galv. chain
Shurflo Anchor Washdown
70 lb. Genuine Luke Storm anchor (secured in locker)
QuickLine 200' flat rope with polished Stainless Steel Reel Mounted on Stern
Fiorintino Para Anchor

44' CAL ELECTRONICS

Raymarine C90W MFD Chart Plotter at helm
Raymarine ST60+ depth, wind, speed at helm
Raymarine C120W MFD Chart Plotter at nav station
Raymarine ST60+ graphic repeater at nav station
Raymarine HD Digital 48-mile radar
Raymarine ST70 autopilot controller and remote
Raymarine Smartpilot SPX autopilot course computer
Raymarine Type 2 linear drive unit
Raymarine GPS 125
Raymarine LifeTag system (4 tags)
Raymarine AIS 650 Class B
Raymarine 218 DSC VHF with remote mic
COM M710 SSB/ham with PTC-II Pro (Pactor3), backstay antenna and AT-130 tuner
Edgeport serial/USB converter
Link 2000 battery monitor
Digital Yacht wireless NMEA router interfaced to NMEA network
Rogue Wave WiFi unit with Netgear router
Garmin GPS 76 for external antenna (for PC connection as backup)
Iridium 9555 satellite phone (active until early December, 2015) with cradle and external antenna
Weems and Plath electronic barometer
Spare Linear Drive Auto Pilot

44' CAL ENGINE AND MECHANICAL

Westerbeke 58 diesel engine Max-Prop feathering propeller and Spurs line cutter
Westerbeke 7.6kW diesel genset Built in oil change pump
Extensive spare parts
Wesmar 12-volt 5hp bow thruster
Racor filters for engine and genset
Water Maker - Spectra Ventura Tropical 200 (12-volts)
Glacier Bay SpiderCoil Refrigeration/Freezer units with Eutectic Cold Plates
(2) Marine Air Reverse Cycle Air Units with Digital Controls

44' CAL ELECTRICAL

100A Balmar alternator with external regulator on engine
Spare 75A Balmar alternator
(2) 120W solar panels mounted on stainless stern arch
(2) 4D Deka gel house batteries
(2) Group 31 Deka gel starting batteries
(2) Mastervolt 50A battery chargers
Westerbeke 7.6KW GenSet

44' CAL GALLEY

U-shaped Galley portside with U-shaped dinette starboard
Force 10 3 burner stove/oven
12 volt
Glacier Bay SpiderCoil refrigeration/freezer
Microwave

44' CAL ACCOMODATIONS

The Cal 44 has a large forward private stateroom with large V berth, with a HandCraft mattress, 3 storage lockers, bureau drawers, and hanging locker. Aft there is an ensuite head with vanity, wash basin, and Lavac marine toilet to starboard. To Port there is a separate stall shower with a sit down bench (now used for a watermaker) A louvered sliding teak door separates this cabin from the main salon. Moving aft is the raised deck salon with settee to port with U-shaped settee/dinette opposite to starboard; the dinette can be converted to a double berth. There is Ultra Suede upholstery in excellent condition. The engine and generator spaces are located beneath the cabin sole for easy access and proper weight distribution. There is a 19" Flat Screen LCD TV with external antenna, Boss stereo with cabin and cockpit speakers, and XM radio (inactive) with external antenna. Lavac Toilets(9) Opening Ports(6) Overhead Hatches(2) Dorade Vents(2) Nicro Stainless Solar Vents Sandvik Stainless Plumbing Fixtures Perko Chrome and Brass Interior Lighting Excellent Solid Teak Joinery and Cabinetry

44' CAL SAFETY EQUIPMENT

Switlik SAR 6-person MOM 8-A man overboard module EPIRB Automatic Halon fire extinguisher in machinery bay 3 Halon hand held fire extinguishers with pressure gauges Xintex control/detectors (2 sensors) 3700gph bilge pump and high water alarm Whale Gusher 30 manual bilge pump at helm Mast safety pulpits Emergency tiller Dacron jack lines for side decks and cockpit Removable hand rail for bridge deck Cabin lockers and bilge access can be secured

DISCLAIMER

The Company offers the details of this vessel in good faith but cannot guarantee or warrant the accuracy of this information nor warrant the condition of the vessel. A buyer should instruct his agents, or his surveyors, to investigate such details as the buyer desires validated. This vessel is offered subject to prior sale, price change, or withdrawal without notice.

Exclusions

Owner's personal belongings.

Disclaimer

The Company offers the details of this vessel or yacht in good faith but cannot guarantee or warrant the accuracy of this information nor warrant the condition of the vessel. A buyer should instruct his representatives, agents, or his surveyors, to investigate such details as the buyer desires validated. This vessel or yacht is offered subject to prior sale, price change, or withdrawal without notice.

PHOTOS

1



2



petunia_4_edited



petunia_5_edited



petunia_6_edited



petunia_7_edited



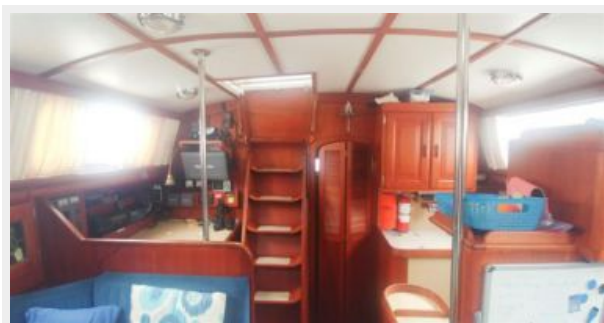
petunia_8_edited



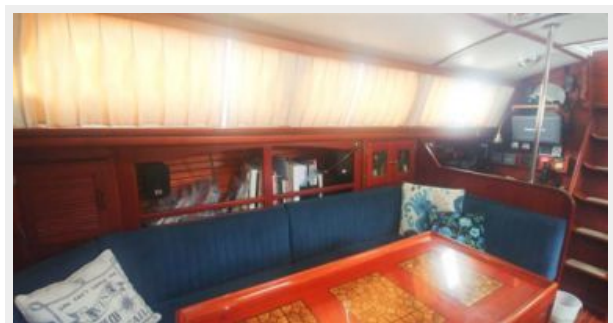
petunia_9_edited



petunia_10_edited



petunia_11_edited



petunia_12_edited



petunia_13_edited



petunia_14_edited



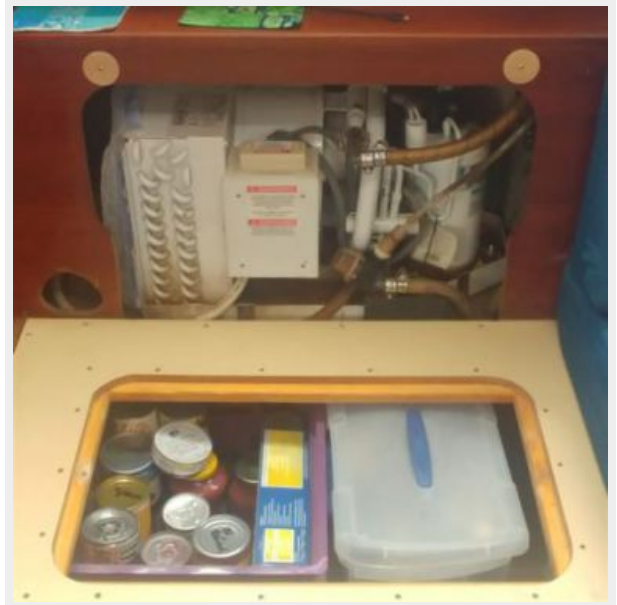
petunia_15_edited



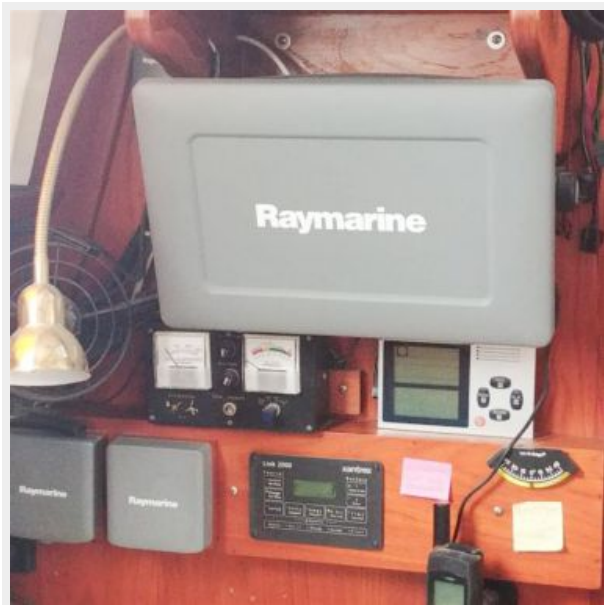
petunia_16_edited



petunia_17_edited



petunia_18_edited



petunia_19_edited



petunia_20_edited



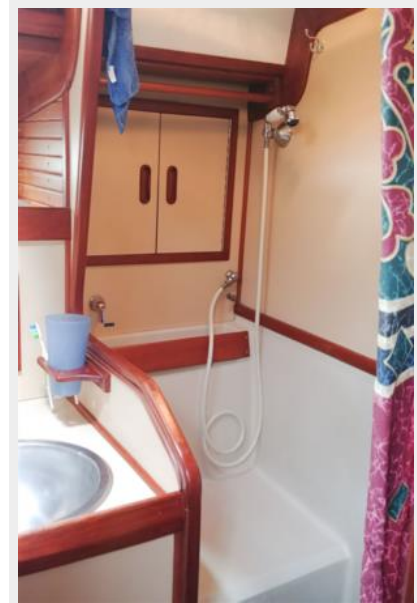
petunia_21_edited



petunia_22_edited



petunia_23_edited



petunia_24_edited



petunia_25_edited



petunia_27_edited



petunia_26_edited



petunia_28_edited



petunia_29_edited



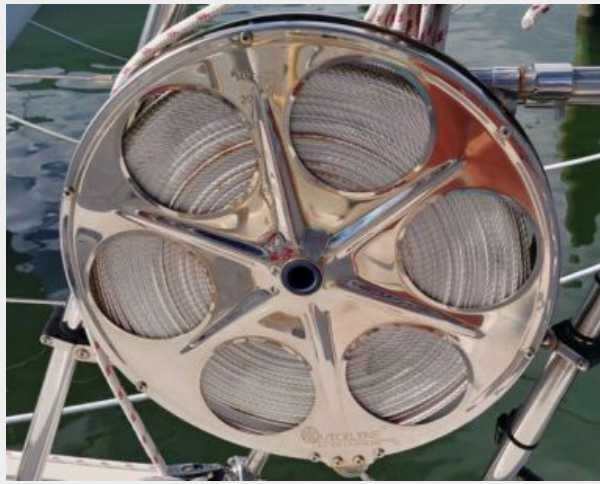
petunia_30_edited



petunia_31_edited



petunia_40_edited



petunia_41_edited



CONTACTS

Andrey Shestakov, leading yacht broker of the sales department of Shestakov Yacht Sales Inc. Shestakov Yacht Sales Inc., the official representative of the Miami/Fort Lauderdale FL headquarters.

Contact details

Email: andrey@shestakovyachtsales.com

Web: shestakovyachtsales.com/en/

Telephones

USA: +1(954)274-4435

Office hours

Monday – Saturday: **9:00 - 21:00** EDT

Sunday: **closed**

Address



Harbour Towne Marina, 850 NE 3rd St,
STE 213, Dania, FL 33004