

CAPT N CAMILLE



Year Built: 2005

Model: Cruising Yacht

Price: PRICE ON APPLICATION

LOA: 37' (11.28mm)

Beam: 13

Max Draft: 3' (0.91mm)

Our experienced yacht broker, Andrey Shestakov, will help you choose and buy a yacht that best suits your needs **Capt N Camille** — n/a from our catalogue. Presently, at Shestakov Yacht Sales Inc., we have a wide variety of yachts available on our sale's list. We also work in close contact with all the big yacht manufacturers from all over the world.

If you would like to buy a yacht **Capt N Camille** — n/a or would like help answering any questions concerning purchasing, selling or chartering a yacht, please call **+1(954)274-4435**

TABLE OF CONTENTS

TABLE OF CONTENTS	2
SPECIFICATIONS	3
Overview	3
Basic Information	3
Dimensions	3
Speed, Capacities and Weight	3
Accommodations	4
Hull and Deck Information	4
PHOTOS	5
CONTACTS	16
Contact details	16
Telephones	16
Office hours	16
Address	16

SPECIFICATIONS

Overview

This 2005 37' Cruisers Yachts 370 Express is a blend of exciting performance and luxury. Cruisers Yachts has combined contemporary styling and spacious interior with this model. This 370 is equipped with a bulkhead separating the master forward stateroom. This vessel is in PRISTINE condition and ready for its next home. If you are in the market for a super clean twin engine diesel 40' express look no further. Spacious aft settee with good headroom. A single stateroom layout that boast a roomier salon and comfortable settee with generous headroom. The settee folds out and converts into a double birth, should you decide to bring guests along. Comfortable U-shaped sofa for any meal of the day. One of the trademarks of Cruisers Yachts is their attention to detail. This is apparent in the salon, where the handsomely appointed interior is finished in cherry wood and supple tan leather upholstery. You'll feel right at home in this galley. To port, is the L-shaped galley, complete with a fridge, sink, cook top, microwave and a TV with VCR. The granite style counter top and cherry wood cabinets add a classy European look to the cabin. An exciting blend of performance and luxury, Cruisers Yachts 370 Express exhibits world class manufacturing with contemporary styling. With a reputation for innovation and attention to detail, Must See!

Basic Information

Category: Cruising Yacht

Sub Category: Express

Model Year: 2005

Year Built: 2005

Dimensions

LOA: 37' (11.28mm)

Beam: 13

Max Draft: 3' (0.91mm)

Speed, Capacities and Weight

Water Capacity: 70 Gallons

Holding Tank: 55 Gal Gallons

Fuel Capacity: 300 Gal Gallons

Accommodations

Total Cabins: 1

Total Berths: 6

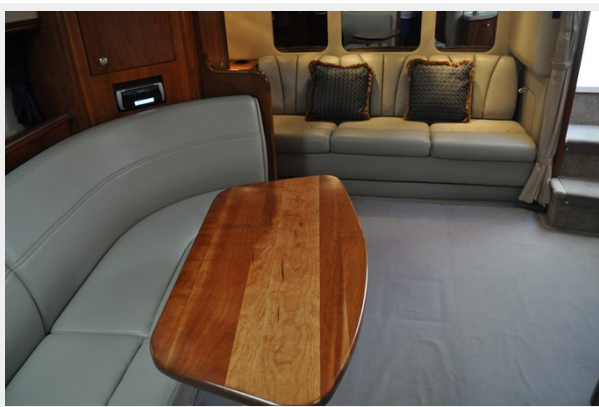
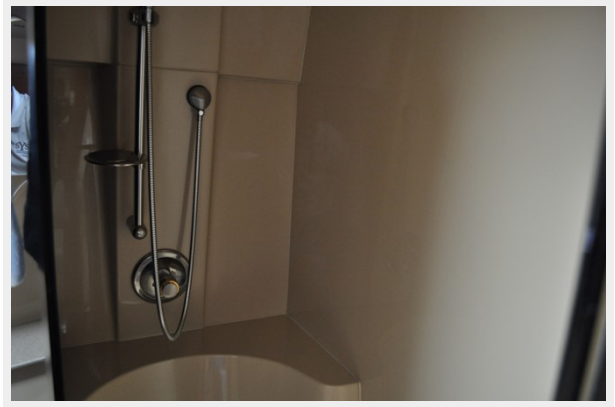
Total Heads: 2

Hull and Deck Information

Hull Material: Fiberglass

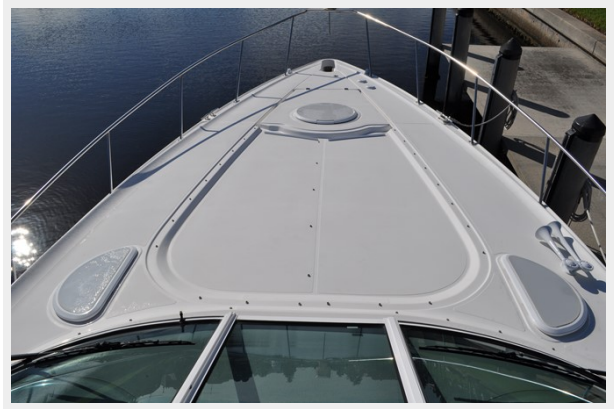
PHOTOS







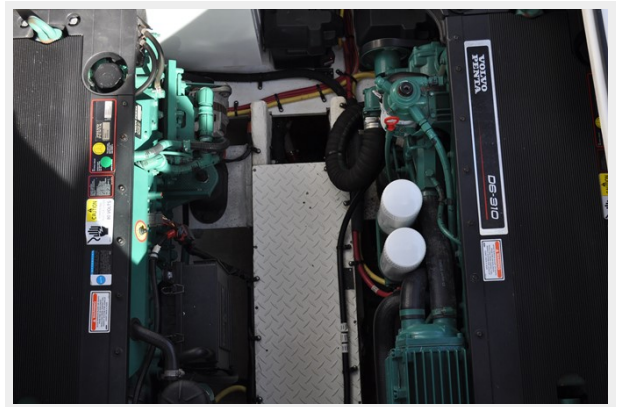
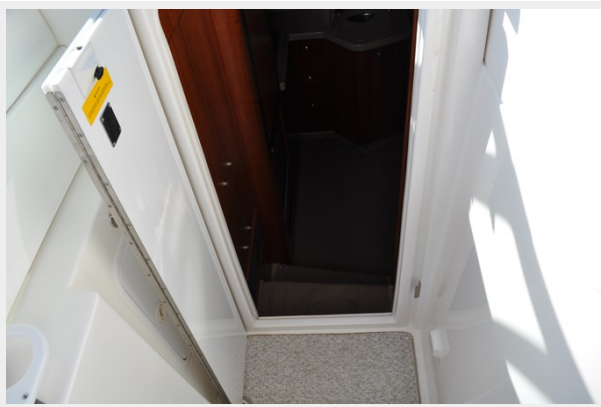


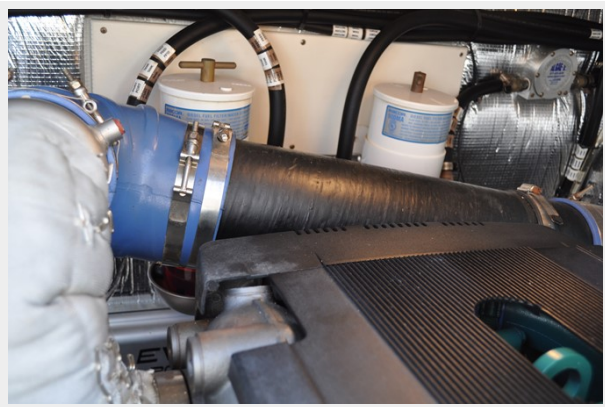
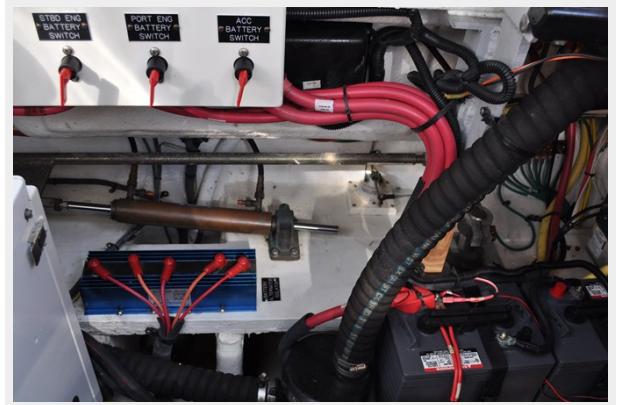
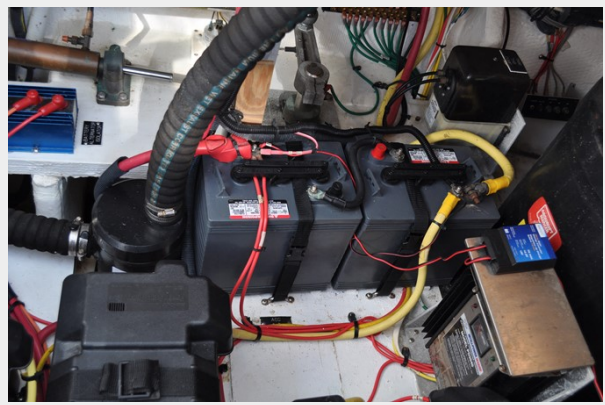
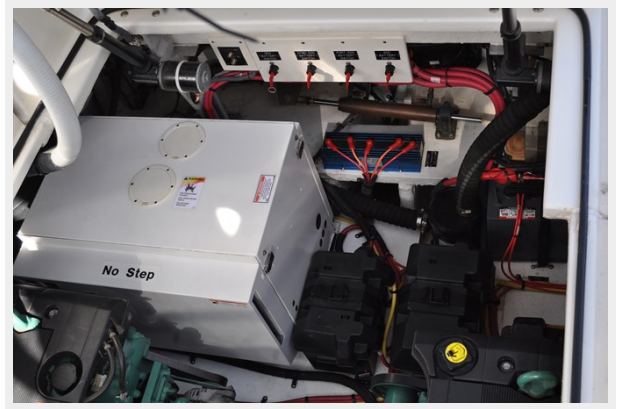
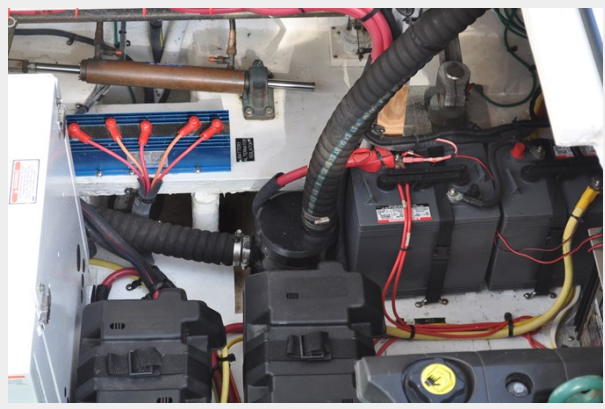














CONTACTS

Andrey Shestakov, leading yacht broker of the sales department of Shestakov Yacht Sales Inc. Shestakov Yacht Sales Inc., the official representative of the Miami/Fort Lauderdale FL headquarters.

Contact details

Email: andrey@shestakovyachtsales.com

Web: shestakovyachtsales.com/en/

Telephones

USA: +1(954)274-4435

Office hours

Monday – Saturday: **9:00 - 21:00** EDT

Sunday: **closed**

Address



Harbour Towne Marina, 850 NE 3rd St,
STE 213, Dania, FL 33004