

PHOTON — HUNTER



Builder: HUNTER

Year Built: 2008

Model: Sloop

Price: PRICE ON APPLICATION

Location: United States

LOA: 33' 6" (10.21m)

Beam: 11' 5" (3.48m)

Min Draft: 4' 6" (1.37m)

Our experienced yacht broker, Andrey Shestakov, will help you choose and buy a yacht that best suits your needs **Photon — HUNTER** from our catalogue. Presently, at Shestakov Yacht Sales Inc., we have a wide variety of yachts available on our sale's list. We also work in close contact with all the big yacht manufacturers from all over the world.

If you would like to buy a yacht **Photon — HUNTER** or would like help answering any questions concerning purchasing, selling or chartering a yacht, please call **+1(954)274-4435**

TABLE OF CONTENTS

TABLE OF CONTENTS	2
SPECIFICATIONS	5
Overview	5
Basic Information	5
Dimensions	5
Speed, Capacities and Weight	5
Accommodations	6
Hull and Deck Information	6
Engine Information	6
DETAILED INFORMATION	7
Accommodations	7
Galley	7
Sails and Rigging	8
Electronics and Navigation	8
Mechanical	8
Electrical	9
Deck and Hull	9
Disclaimer	10
Exclusions	10
Disclaimer	10
PHOTOS	11
DSCF6940	11
DSCF6964	11
DSCF6959	11
DSCF6960	11
DSCF6958	11
DSCF6978	11
DSCF6967	12

DSCF6972	12
DSCF6984	12
DSCF6969	12
DSCF6991	13
DSCF6977	13
DSCF6975	13
DSCF6993	13
DSCF6989	14
DSCF6912	14
DSCF6950	14
DSCF6933	14
DSCF6930	14
DSCF6944	14
DSCF6952	15
DSCF6922	15
DSCF6918	15
DSCF6927	15
DSCF6919	16
DSCF6986	16
DSCF6994	16
DSCF6995	16
DSCF6915	17
DSCF6924	17
DSCF6925	17
CONTACTS	18
Contact details	18
Telephones	18
Office hours	18
Address	18

SPECIFICATIONS

Overview

- **NEW LISTING!**
- **You will have fun sailing this lively vessel and enjoy extended cruising to your favorite islands and anchorages!**
- **Surprisingly spacious interior, makes a great liveaboard**
- **Transferable slip in Harbortown Marina, Fort Pierce**
- **Very clean and well maintained!**
- **Factory upgrade 29hp Yanmar and only has 650 hours!**
- **Updated with many custom features for extended cruising... solar panels, upgraded electric windlass and Rochna anchor, dodger and bimini, 2017 Isotherm refrigerator and additional fresh water tank to total 100 gals**
- **4'6" shoal draft wing keel and 47' bridge clearance!**
- **In mast furling main and roller furling genoa with lines leading to cockpit and traveler mounted on Hunter arch for ease of handling**
- **Plenty of room for friends and family in the shaded cockpit and 2 corner seats**
- **Spacious interior 2 stateroom/1 head layout**

Basic Information

Category: Sloop

Model Year: 2008

Year Built: 2008

Country: United States

Dimensions

LOA: 33' 6" (10.21m)

LWL: 29' 5" (8.97m)

LOD: 0' 0" (0.00m)

Beam: 11' 5" (3.48m)

Min Draft: 4' 6" (1.37m)

MFG Length: 33' 0" (10.06m)

Speed, Capacities and Weight

Displacement: 10400 Pounds

Accommodations

Total Cabins: 2

Total Heads: 1

Hull and Deck Information

Hull Material: Fiberglass

Engine Information

Engines: 1

Manufacturer: Yanmar

DETAILED INFORMATION

Accommodations

You will have plenty of room for family and guests in this two private cabins and single head layout. The salon offers expansive seating, a drop-down table and a navigation station. The aft master stateroom features a spacious double berth and abundant storage, while the forward cabin offers privacy for another couple. The U-shaped galley is to port. Numerous ports and skylights offer abundant natural light and the opening hatches, ports and 12V fans provide good ventilation.

- Cherrywood finish
- Bench settee and Nav desk to starboard
- U shaped settee to port with dining table
- 32" Samsung smart TV with soundbar and speakers (2018)
- (6) LED reading lights
- 2 Lewmar hatches with screens
- 4 fixed ports
- pleated shades
- 2 skylights w/ UV shade
- 2 opening ports w/ port visors
- (4) Caframo 12V fans (2018)
- Jabsco manual head (2015)
- New hoses for galley, vanity drain and sanitation (2018)
- New vanity sink faucet (2018)
- Numerous storage lockers and provisioning space

Galley

- Generous U shaped galley
- Corian counters and teak fiddles
- NEW 2016 Isotherm Top loading cold plate refrigeration 5.3 cu ft
- NEW 2017 Isotherm Front loading refrigeration with smart controller
- Force 10 propane 2 burner stove/oven
- LPG control
- Microwave oven
- Deep SS sink
- Moen galley faucet (2018)
- Drinking water filter (2018)
- Hot and cold pressure water system
- Water tanks increased to hold 100 total gals
- Deep bin storage

- Generous cabinet storage
- Dish storage in cabinet with dish drainer

Sails and Rigging

- Aluminum mast and boom
- B & R rig
- In mast furling mainsail
- UK Mainsail
- Roller furling unit
- UK Jib - serviced by Sailcare (2018)
- SS arch w/overhead traveller
- Lines led aft thru line cleats
- Lewmar winches - serviced (2018)
- Running lights
- LED steaming and LED anchor light (2018)
- Working Sail Area : 625.00 sq ft
- US Sailing Basic Cruising manual

Electronics and Navigation

- Raymarine RC435 color GPS/chartplotter, USA charts
- ST6002 Autopilot
- Raymarine ST60+ speed and depth
- Compass
- ICOM VHF at nav station
- VHF Ram mic at helm
- Kenwood Stereo/CD player (2018)
- New Speakers in salon and cockpit (2018)
- Ubiquiti wifi range extender and router 12V (2018)
- USB ports in forward cabin (2018)
- Flatscreen HDTV mounted on bulkhead

Mechanical

- Factory upgrade **29hp Yanmar, 650 hours**
- Racor fuel filter
- 25 gal fuel capacity
- Halon system in engine compartment
- Freshwater flush system for engine
- New strainers for head and engine intake (2018)

- Raw water intake and bronze seacock (2015)
- Raw water pump (2015)
- Re-packed stuffing box (2015)
- Replaced prop shaft log (2015)
- 3 bladed Prop re-pitched (2015)
- **Additional bladder tank added for freshwater total capacity 100 gallons**
- Fresh water tank sending unit (2018)
- New freshwater pump (2018)
- New hoses for galley, vanity and sanitation (2018)
- Jabsco head (2015)
- New bilge pump (2018)
- Equipment manuals

Electrical

- (2) Kyocera solar panels
- Blue Sky controller
- Pro link Battery charger
- Xantrex monitor
- (3) 12V batteries
- Dual 12V battery switch
- AC/DC electric panel
- New Eel Shore power cord (2018)
- Multiple AC outlets in cabin
- (2) Solar vents (2018)

Deck and Hull

- Entertainment-ready cockpit with drop-leaf table, built-in seating for friends and family and **(2) corner stern seats** are the favorite perch on the boat!
- **Upgraded Electric Windlass with gypsy**
- **Rochna anchor** w/30' 3/8" chain and 9/16" rode
- Anchor locker
- Danforth anchor, rail mounted
- SS anchor roller
- Anchor locker
- Dodger and bimini
- Outboard hoist
- Walk thru transom
- Removable helm seat
- Folding steering wheel
- Instruments mounted on Navpod on binacle

- Cockpit table and SS grab bar
- LED cockpit light (2018)
- Cockpit locker storage
- (2) blue flip chairs
- Magma BBQ grill
- Propane tank in vented locker
- 3 Lifejackets
- Lifesling
- Flares
- (4) Amerex Fire extinguishers
- CO2 and smoke detector
- Boat hook
- Docklines and fenders
- Kevlar reinforced hull forward of the external lead keel
- Fresh bottom paint 12/2018 InterluxMicron CSC Red

Disclaimer

The Company offers the details of this vessel in good faith but cannot guarantee or warrant the accuracy of this information nor warrant the condition of the vessel. A buyer should instruct his agents, or his surveyors, to investigate such details as the buyer desires validated. This vessel is offered subject to prior sale, price change, or withdrawal without notice.

Exclusions

Owner's personal belongings.

Disclaimer

The Company offers the details of this vessel or yacht in good faith but cannot guarantee or warrant the accuracy of this information nor warrant the condition of the vessel. A buyer should instruct his representatives, agents, or his surveyors, to investigate such details as the buyer desires validated. This vessel or yacht is offered subject to prior sale, price change, or withdrawal without notice.

PHOTOS

DSCF6940



DSCF6964



DSCF6959



DSCF6960



DSCF6958



DSCF6978



DSCF6967



DSCF6972



DSCF6984



DSCF6969



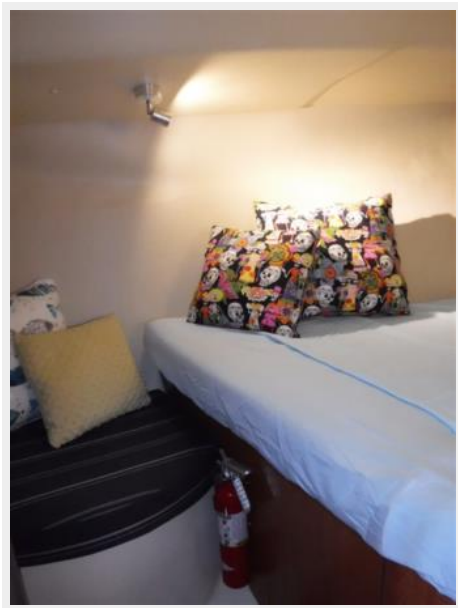
DSCF6991



DSCF6977



DSCF6975



DSCF6993



DSCF6989



DSCF6912



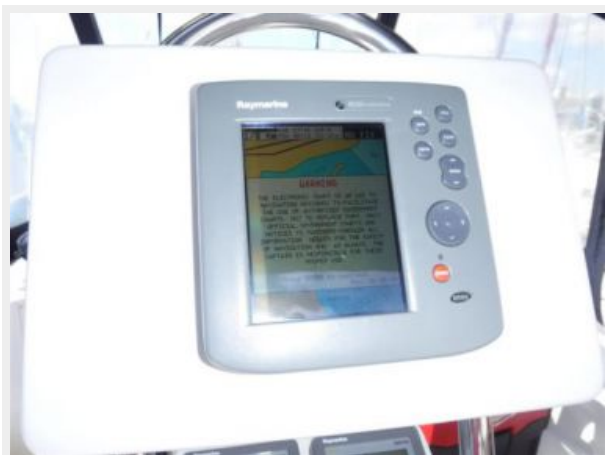
DSCF6950



DSCF6933



DSCF6930



DSCF6944



DSCF6952



DSCF6922



DSCF6918



DSCF6927



DSCF6919



DSCF6986



DSCF6994



DSCF6995



DSCF6915



DSCF6924



DSCF6925



CONTACTS

Andrey Shestakov, leading yacht broker of the sales department of Shestakov Yacht Sales Inc. Shestakov Yacht Sales Inc., the official representative of the Miami/Fort Lauderdale FL headquarters.

Contact details

Email: andrey@shestakovyachtsales.com

Web: shestakovyachtsales.com/en/

Telephones

USA: +1(954)274-4435

Office hours

Monday – Saturday: **9:00 - 21:00** EDT

Sunday: **closed**

Address



Harbour Towne Marina, 850 NE 3rd St,
STE 213, Dania, FL 33004