

## NO NAME — PURSUIT



**Судостроитель:** PURSUIT

**Год постройки:** 2015

**Модель:** Крейсер

**Цена:** **ЦЕНА ЯХТЫ ПО ЗАПРОСУ**

**Местонахождение:** United States

**Длина общая:** 34' 0" (10.36m)

**Ширина:** 12' 0" (3.66m)

**Мин. осадка:** 1' 11" (0.58m)

**Макс. осадка:** 2' 11" (0.89m)

**Крейс. скорость:** 29 Kts. (33 MPH)

**Макс. скорость:** 45 Kts. (52 MPH)

Купить No Name — PURSUIT а также выбрать подходящую вам яхту из нашего каталога яхт вам поможет опытный яхтенный брокер Андрей Шестаков. На сегодняшний день компания Shestakov Yacht Sales Inc. имеет большое количество яхт в собственном списке продаж, а также тесно сотрудничает со всеми крупными яхтенными производителями по всему миру.

Для того чтобы купить яхту No Name — PURSUIT а также проконсультироваться по любому вопросу связанному с покупкой, продажей, чартером яхт позвоните по телефону **+7(918)465-66-44**.

# ОГЛАВЛЕНИЕ

ОГЛАВЛЕНИЕ	2
ХАРАКТЕРИСТИКИ	5
Обзор	5
Основная информация	5
Размеры	5
Скорость, вместимость и масса	5
Размещение	5
Корпус и палуба	6
Информация о двигателе	6
ПОДРОБНОЕ ОПИСАНИЕ	7
Manufacturer Provided Description	7
Standard Equipment	7
Options and Upgrades	9
Disclaimer	9
Исключения	9
Отказ от ответственности	9
ФОТОГРАФИИ	10
8-9-19A	10
8-9-19B	10
8-9-19C	10
8-9-19D	10
8-9-19E	10
8-9-19G	10
8-9-19I	11
8-9-19J	11
8-9-19K	11
8-9-19N	11
8-9-19O	11

---

Ocean Pro (1)	11
Ocean Pro (2)	12
Ocean Pro (3)	12
Ocean Pro (4)	12
Ocean Pro (5)	12
Ocean Pro (6)	12
Ocean Pro (7)	12
Ocean Pro (8)	13
Ocean Pro (9)	13
Ocean Pro (10)	13
Ocean Pro (12)	13
Ocean Pro (13)	13
Ocean Pro (17)	13
Ocean Pro (18)	14
Ocean Pro (19)	14
Ocean Pro (20)	14
Ocean Pro (21)	14
Ocean Pro (23)	14
Ocean Pro (24)	14
Ocean Pro (25)	15
Ocean Pro (26)	15
Ocean Pro (27)	15
Ocean Pro (28)	15
Ocean Pro (29)	15
Ocean Pro (30)	15
Ocean Pro (31)	16
Ocean Pro (33)	16
Ocean Pro (35)	16
Ocean Pro (36)	16

---

---

Ocean Pro (37)	16
Ocean Pro (38)	16
Ocean Pro (40)	17
Ocean Pro (41)	17
Ocean Pro (43)	17
Ocean Pro (45)	17
Ocean Pro (48)	17
Ocean Pro (49)	17
Ocean Pro (50)	18
Ocean Pro (51)	18
Ocean Pro (52)	18
Ocean Pro (53)	18
Ocean Pro (54)	18
Ocean Pro (55)	18
<b>КОНТАКТЫ</b>	<b>19</b>
Контактная информация	19
Телефоны	19
Время работы	19
Адрес	19

# ХАРАКТЕРИСТИКИ

## Обзор

This 2015 34' Pursuit OS 345 is new to the market and is designed to safely and comfortably take on blue water fishing or cruising. She is professionally maintained, has low hours, and is in prime turn-key condition. Her options include twin Yamaha F350's w/ warranties until 5/29/21, diesel genset, cabin and cockpit air, bow thruster, Simrad electronics w/autopilot, and open array radar. Check out our full list of upgrades in the description section of our Full Specs.

## Основная информация

Тип судна: Крейсер

Модельный год: 2015

Год постройки: 2015

Страна: United States

## Размеры

Длина общая: 34' 0" (10.36m)

Ширина: 12' 0" (3.66m)

Мин. осадка: 1' 11" (0.58m)

Макс. осадка: 2' 11" (0.89m)

Длина привального бруса: 34' 5"  
(10.49m)

## Скорость, вместимость и масса

Крейс. скорость: 29 Kts. (33 MPH)

Макс. скорость: 45 Kts. (52 MPH)

Водоизмещение: 15950 Pounds

Вместимость воды: 50 Gallons

Вместимость сточного бака: 18 Gallons

Объем топливного бака: 340 Gallons

## Размещение

Всего ком. состава: 1

## Корпус и палуба

---

**Материал корпуса:** Fiberglass

## Информация о двигателе

---

**Двигатели:** 2

**Производитель:** Yamaha

**Модель:** F350 4S

**Тип двигателя:** Outboard

**Тип топлива:** Gas/Petrol

# ПОДРОБНОЕ ОПИСАНИЕ

## Manufacturer Provided Description

When tasked with designing a replacement model for the 335 Offshore - the best selling model in Pursuit's history - our engineers had a tall order to fill. Fortunately, our staff is full of over-achievers and the OS 345 was born. Slightly longer and wider than her predecessor, this model features an expansive cockpit for fish fighting and a large cabin for cruising and overnighting in comfort. The OS 345's hull has been specifically designed for twin Yamaha 350 hp 4-stroke engines, which provide optimal performance with minimal horsepower. Standard bow thrusters will give any captain the confidence to dock in close quarters, wind or strong currents. The express design includes an open helm with optional bridge deck cooling with air conditioning and an aft canvas enclosure so you can escape the elements without escaping the view. This layout also affords quick access from the helm to the cockpit when you have more screaming reels than anglers. The cockpit includes ample seating and an electric grill for entertaining and a host of fishing features including a recirculating livewell, a comprehensive rigging station with locking tackle drawers, insulated fish boxes and enough elbow room that you're not running into each other. In the cabin, we've developed an innovative circular seating arrangement forward for dining and socializing. The mid-cabin berth includes a comfortable settee. The head compartment includes a separate area for showering to minimize clean up after a nice hot shower. The galley features stainless steel appliances and Corian countertops like those found in fine custom homes - that's appropriate since you'll probably want to live aboard the OS 345.

## Standard Equipment

HULL, DECK & COCKPIT Pursuit® Protection Plan: 5-year hull/deck structural warranty 5-year blister-free warranty 2-year limited warranty Aft-tilting fiberglass helm with integrated footrest, storage bin and stainless steel handrail Infused fiberglass windshield with tempered safety glass and forward electrically actuated ventilating center window Custom non-skid deck, cockpit surface and gunwale boards Self-draining cockpit with scupper drains One-piece welded, 316L stainless steel forward grab rail High density PVC rubrail with stainless steel insert Reinforced infused FRP one-piece stringer grid with bilge water management Molded-in fiberglass bow pulpit with 316L stainless steel bow roller and 10" mooring cleat, skid plate and chain binder Anchor windlass with switch at helm and remote switch at anchor locker with overboard drain and raw water washdown 17" x 17" fwd hatch with adjuster and sunshade slide screen Acrylic transom door with heavy duty stainless steel hardware Six (6) 316L stainless steel 10" mooring cleats Full cockpit breathable coaming bolsters with dry-fast foam Four (4) opening stainless steel portlights with screens Port and starboard pantographic windshield wipers with fresh water washer system Custom Captain's helm seat with foldup armrests and flip-up bolster Custom molded cockpit entertainment center with fiberglass sink, folding hot and cold water faucet, Corian® cutting board and two aft storage drawers Kenyon 240 v cockpit grill with fiberglass cover Stbd. side 38 quart refrigerator/freezer with thermostat and drain Portside bridge-deck "L" shaped lounge with padded backrest with molded in footrest Hideaway pull out aft facing

seatAcrylic sliding companionway door with lock/keeper and sliding screenInterior and exterior  
 hardtop overhead handrailsWhite powder coated aluminum support frames Hardtop with sprdr  
 lights, six (6) LED courtesy lights, eight (8) frame mounted rod holders, four (4) recessed  
 speakers, two (2) 17 x 17 hatches, canvas storage pouches for PFD's and three-piece drop  
 curtainForward facing aft fold-down seatSeven (7) Drink holdersPort and stbd 18" stainless steel  
 transom grabrailsDockside fresh water inlet with pressure regulatorCockpit freshwater shower  
 (hot and cold)Comfort & InteriorSolid Teak floorFiberglass interior headlinerStainless steel stairs  
 entry steps with teak treadsPort-side hanging locker, cedar lined with lightOverhead dinette lights  
 (3), fwd. LED accent reading lights (2) and V-berth overhead LED accent lights (2)Polk stereo  
 with bluetooth streaming, JL audio speakers (6), subwoofer and JL audio amplifier110 v outlet,  
 GFI protectedTeak table with inlay and electric adjustable pedestalDinette seating area with  
 storage underneathV-berth with 5" foam cushions and upholstered backrestMid-berth with 6"  
 inner spring mattress, storage underneath and two (2) overhead LED lightsMid-berth setteeMid-  
 berth privacy curtain19" flat screen TV (12 v) with DVD playerTV antennaDockside TV inlet6  
 gallon 240 v stainless steel water heaterGalleyComplete Corian® galley top with storage  
 cabinets overhead and drawers under sink areaFiberglass sink with pressurized hot/cold mixing  
 valve faucetKenyon 2-burner glass cooktop with pop up pan holders • 110 v microwave3.8 cu. ft.  
 stainless steel refrigeratorStorage cabinet for plates, cups and utensilsHeadVacu-Flush head  
 with 18 gallon holding tankFiberglass head/shower with sump pump and molded-in fiberglass  
 shower seatBi-fold acrylic shower doorFull size linen closetDesigner sink with pressurized  
 hot/cold faucetCorian® vanity top with vanity mirrorTowel rackFramed head door with full length  
 mirror110 v outlet, GFI protectedFISHINGFour (4) stainless steel rod holders in gunwaleLighted  
 Oceana blue 45 gallon circulating livewell with bottom drain plugTwo (2) in-deck, insulated fish  
 boxes, 40 gallon each with pump and overboard dischargeAluminum reinforcement plates and  
 wiring for downrigger installation; aft gunwale, port sideRaw water wash down with cockpit and  
 anchor locker hose outletsThree (3) cabin rod holdersUnder gunwale poly rod racksStbd side  
 tackle centerStainless steel cockpit toe railsINSTRUMENTATION, EQUIPMENT &  
 SAFETY Pursuit custom master circuit breaker switch panel for 12 v and110 vYamaha® fuel  
 management systemBoarding ladder, 316L stainless steel telescoping with fiberglass hatch50  
 amp 240 v/ 60 Hz dockside power with 25' cordOne (1) 20 amp battery charger for engine  
 starting batteriesOne (1) 40 amp battery charger for house, electronics, and bow thruster  
 batteriesFive (5) battery system with batteries, trays, and switchesLewmar® bow thruster240 v  
 A/C with reverse-cycle heat 16,000 BTUPanda® 8.0 KW diesel generatorOne 25 gallon diesel  
 fuel tankTeleflex power assisted dual cylinder hydraulic steering with tilt sport helm; 16" Edson  
 comfort grip stainless steel steering wheelRitchie® Navigator compassCabin and mid-berth CO  
 detectorsIndependent windshield / wiper washer controlsPursuit custom master 12-volt and  
 240/120-volt interior MDP swich panelOne (1) 12 KVA isolation transformerFresh water tank - 50  
 gallonsFuel tanks - Total 340 gallons with fuel selector valves and on/off valves for eachFour (4)  
 12V receptacle; 2 helm, 2 cabinThree (3) fire extinguishersLED cockpit courtesy lights (7)Dual  
 drop-in electric horns on front of hardtopThree (3) bilge pumps; 2 - 1500, 1- 1100  
 forwardRecessed Lenco® electronic trim tabs with indicatorCertification/standard compliance:  
 ABYC, USCG, CE, Transport Canada



---

## Options and Upgrades

---

Engine warranties until 5/29/21 Yamaha security system 2 Simrad Nss 12 EVO2 displays w/GPS/chart plotter/fish finder Simrad 6kw Open array radar Simrad auto pilot Simrad VHF radio Helm ACCashmere Helm/foot rest color Scarlet/Scarlet boot stripe Enticement interior package Transom rod holders Upgraded white stamoid marlon canvas 50' shore power cord Engine covers Outriggers Under water lights Spot light Fresh white hull color All new batteries 2019

---

## Disclaimer

---

The Company offers the details of this vessel in good faith but cannot guarantee or warrant the accuracy of this information nor warrant the condition of the vessel. A buyer should instruct his agents, or his surveyors, to investigate such details as the buyer desires validated. This vessel is offered subject to prior sale, price change, or withdrawal without notice.

---

## Исключения

---

При продаже яхты исключаются личные вещи владельца.

---

## Отказ от ответственности

---

Компания предоставляет описание судна или яхты добросовестно, но не может гарантировать точность этой информации, а также не ручается за техническое состояние. Покупатель должен проинструктировать своих агентов или оценщиков исследовать представленную информацию более подробно, по собственному желанию. Продажа судна или яхты, изменение цены или снятие с продажи будет происходить без предварительного уведомления.

# ФОТОГРАФИИ

8-9-19A



8-9-19B



8-9-19C



8-9-19D



8-9-19E



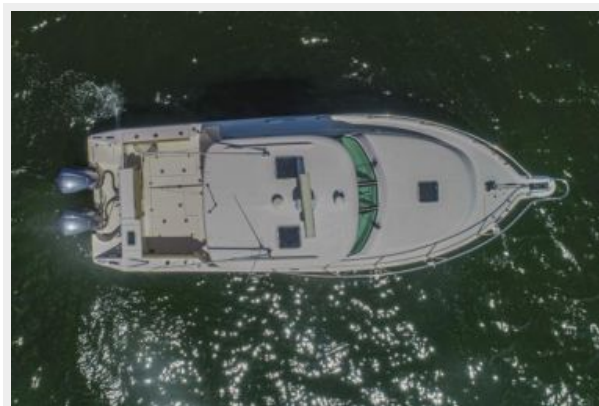
8-9-19G



8-9-19I



8-9-19J



8-9-19K



8-9-19N



8-9-19O



Ocean Pro (1)



Ocean Pro (2)



Ocean Pro (3)



Ocean Pro (4)



Ocean Pro (5)



Ocean Pro (6)



Ocean Pro (7)



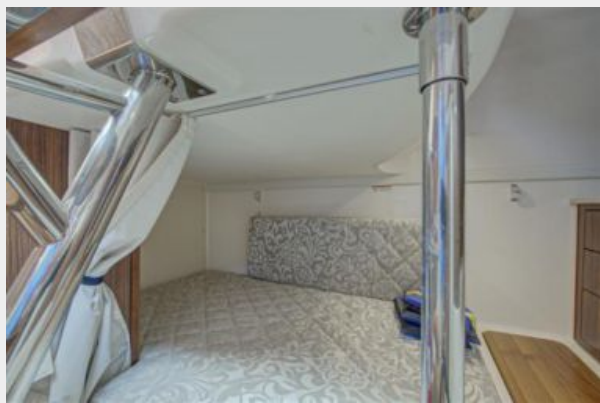
**Ocean Pro (8)**



**Ocean Pro (9)**



**Ocean Pro (10)**



**Ocean Pro (12)**



**Ocean Pro (13)**



**Ocean Pro (17)**



Ocean Pro (18)



Ocean Pro (19)



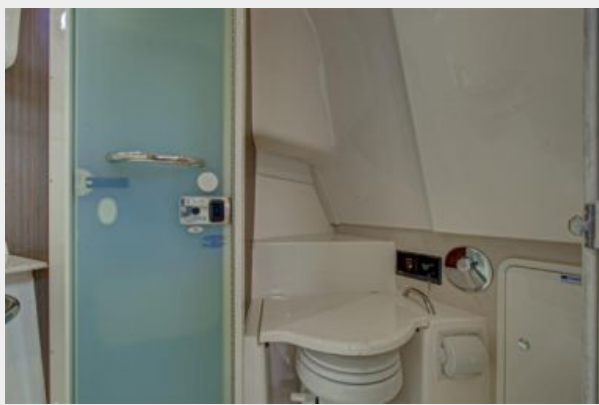
Ocean Pro (20)



Ocean Pro (21)



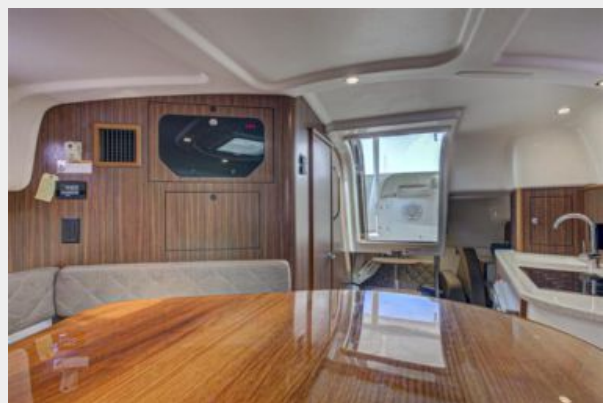
Ocean Pro (23)



Ocean Pro (24)



**Ocean Pro (25)**



**Ocean Pro (26)**



**Ocean Pro (27)**



**Ocean Pro (28)**



**Ocean Pro (29)**



**Ocean Pro (30)**



**Ocean Pro (31)**



**Ocean Pro (33)**



**Ocean Pro (35)**



**Ocean Pro (36)**



**Ocean Pro (37)**



**Ocean Pro (38)**





**Ocean Pro (40)**



**Ocean Pro (41)**



**Ocean Pro (43)**



**Ocean Pro (45)**



**Ocean Pro (48)**



**Ocean Pro (49)**



Ocean Pro (50)



Ocean Pro (51)



Ocean Pro (52)



Ocean Pro (53)



Ocean Pro (54)



Ocean Pro (55)



# КОНТАКТЫ

---

Андрей Шестаков (Andrey Shestakov) – ведущий яхтенный брокер отдела продаж яхт и судов компании Shestakov Yacht Sales Inc. Официальный представитель Shestakov Yacht Sales Inc. для русскоговорящих клиентов в центральном офисе компании в Майами/Форт Лодердейл/Флорида/США.

## Контактная информация

---

Email: [andrey@shestakovyachtsales.com](mailto:andrey@shestakovyachtsales.com)

Web: [shestakovyachtsales.com](http://shestakovyachtsales.com)

## Телефоны

---

Краснодарский край: **+7(918)465-66-44**

США, Майами, Флорида: **+1(954)274-4435**

## Время работы

---

Понедельник – Суббота: **9:00 - 21:00**  
EDT

Воскресенье: **Закрито**

## Адрес

---



Harbour Towne Marina, 850 NE 3rd St,  
STE 213, Dania, FL 33004