

TIME OUT — SANLORENZO



Судостроитель: SANLORENZO

Год постройки: 2019

Модель: Моторная яхта

Цена: ЦЕНА ЯХТЫ ПО ЗАПРОСУ

Местонахождение: United States

Длина общая: 106' 0" (32.31m)

Ширина: 23' 1" (7.04m)

Макс. осадка: 6' 4" (1.93m)

Крейс. скорость: 23 Kts. (26 MPH)

Макс. скорость: 28 Kts. (32 MPH)

Купить **TIME OUT — SANLORENZO** а также выбрать подходящую вам яхту из нашего **каталога яхт** вам поможет опытный яхтенный брокер Андрей Шестаков. На сегодняшний день компания **Shestakov Yacht Sales Inc.** имеет большое количество яхт в **собственном списке продаж**, а также тесно сотрудничает со всеми крупными **яхтенными производителями** по всему миру.

Для того чтобы купить яхту **TIME OUT — SANLORENZO** а также проконсультироваться по любому вопросу связанному с покупкой, продажей, чартером яхт позвоните по телефону **+7(918)465-66-44**.

ОГЛАВЛЕНИЕ

ОГЛАВЛЕНИЕ	2
ХАРАКТЕРИСТИКИ	6
Обзор	6
Основная информация	6
Размеры	6
Скорость, вместимость и масса	6
Размещение	6
Корпус и палуба	7
Информация о двигателе	7
ПОДРОБНОЕ ОПИСАНИЕ	8
America's Edition	8
Walkthrough	9
Salon	10
Dining Area	10
Day Head	10
Master Stateroom	10
Master Bath	10
VIP Stateroom	10
VIP Bath	11
Guest Staterooms	11
Guest Baths	11
Crew Quarters	11
Galley	11
Wheelhouse	11
Navigation and Communication Equipment	12
Engine Room	12
Control Room	12
Main Machinery	12

Electrical Systems	13
Tender Garage	13
Broker's Comments	13
Исключения	13
Отказ от ответственности	13
ФОТОГРАФИИ	15
Salon	15
Salon	15
Side Deck Open Window	15
Dining area	15
Dining Area	15
Galley	15
Master Stateroom Entryway	16
Master Stateroom	16
Beach Club	16
Master Stateroom	16
Master Stateroom	16
Master Stateroom	16
Master Bath	17
VIP Stateroom	17
VIP Stateroom	17
VIP Bath	17
Guest Stateroom	17
Guest Stateroom	17
Guest Bath	18
Twin Stateroom	18
Twin Stateroom	18
Stairway	18
Pilothouse	18

Helm	18
Flybridge	19
Sun Deck	19
Flybridge	19
Flybridge	19
Flybridge	19
Flybridge Bar	19
Upper Deck Helm	20
Upper Deck Helm	20
Sun Deck	20
Foredeck	20
Aft Deck	20
Aft Deck	20
Engine Room	21
Boat Garage	21
Engine Room	21
Control Room	21
Crew Quarters	21
Crew Cabin	21
Crew Bath	22
Stern	22
Aerial Upper Deck	22
Port Profile Running	22
Beach Club	22
Port Profile	22
Starboard Bow Profile	23
Starboard Profile	23
LAYOUT	23
КОНТАКТЫ	24

Контактная информация	24
Телефоны	24
Время работы	24
Адрес	24

ХАРАКТЕРИСТИКИ

Обзор

TIME OUT is a new 2019 106' Sanlorenzo built by a very experienced yachtsman. She is offered for sale as the owners have found themselves in new business dealings that do not allow time for the boat. This untimely event has made for an excellent opportunity for a buyer to purchase a like-new Sanlorenzo 106' with all warranties and no waiting. TIME OUT had many upgrades throughout her build and is furnished with the best of furnishings possible with a décor that is embraced by all who have seen her.

Основная информация

Тип судна: Моторная яхта

Модельный год: 2019

Год постройки: 2019

Страна: United States

Размеры

Длина общая: 106' 0" (32.31m)

Ширина: 23' 1" (7.04m)

Макс. осадка: 6' 4" (1.93m)

Скорость, вместимость и масса

Крейс. скорость: 23 Kts. (26 MPH)

Макс. скорость: 28 Kts. (32 MPH)

Чистый вес: 199 Pounds

Вместимость воды: 739 Gallons

Вместимость сточного бака: 369 Gallons **Объем топливного бака:** 3275 Gallons

Размещение

Всего кают: 5

Спальные места: 10

Корпус и палуба

Материал корпуса: Fiberglass

Комплектация корпуса: Planing

Информация о двигателе

Двигатели: 2

Производитель: MTU

Модель: 16V2000 M96

Тип двигателя: Inboard

Тип топлива: Diesel

ПОДРОБНОЕ ОПИСАНИЕ

America's Edition

ELECTRICAL SYSTEM• Electrical system: 127/220V• Shore power connections: Two (2) 220V AC 100A Three-phase 60Hz• Generators: Two (2) 55kW• Fail-safe galvanic isolator for dry dock• Battery charger: 12V/25A for generator batteries• Aft Glendenning Cablemasters with 30m (98') cable: Two (2) CM8• GFCI distributed in the technical room, bathroom, galley and exterior utilizing waterproof boxes in the engine room and lazarette Isolation transformers (upgraded below)• Double gang 110V 60Hz USA/EU sockets• One (1) 24V master switch dedicated to navigation electronics at pilothouse **ENGINE ROOM EQUIPMENT**• Double Racor filters for generators• Ball valve thru-hull fittings (engine cooling exhausts remain as gate valves) Engine oil change system with manual pump (upgraded below)• Overboard venting for dryer, in lieu of self-contained ventilation Watermaker: Sea Recovery 1800 gallons/day (includes predisposition) Additional fresh water purification system with active carbons• Additional grey water pump installed in by-pass• Additional black water pump installed in by-pass• Installation of FM200 fire system equipment (USCG approved) **AIR CONDITIONING SYSTEM**• Tropicalized air conditioning system (twin chillers) with chilled water piping insulation upgrade: 240,000 BTU Air conditioning condensation draining overboard • Ozone treatment for air conditioning system **MANEUVERING CONTROLS** • MTU Blue Line controls **NAVIGATION ELECTRONICS**• VHF with US channels• Additional electrical conduits between the engine room, pilothouse, flybridge helm station and hardtop **COMPLEMENTS FOR THE EXTERIOR**• Three (3) freshwater outlets: Flybridge, aft and bow• Spotlight• Lateral gangway: Marquipt Sea Stair in stainless steel with teak steps• Stainless steel protection around exhaust plenums and forward bow cap rail area• Prop speed antifouling system on shafts, propellers, intruder, bow and stern thruster propellers, swim platform lift brackets, rudders and supports, trim tabs • Disappearing stern shower• Stainless steel column shower on flybridge Teak flybridge deck • Aft flybridge awning: Sail-cover sun shade system with SeaSmart removable stanchions• Bow seating area awning: Sail-cover sun shade system with SeaSmart removable carbon fiber stanchions Manual hi-low table for bow seating area; convertible to a sunbed with included cushion filler panel• Two (2) electric hi-low tables for the aft deck; convertible to make one large table• Custom teak cabinet on the flybridge to house the Kenyon Texan BBQ (see Appliance Options)• Paola Lenti furnishings and exterior decor• Six (6) Underwater lights• Launching/recovery system for jet ski/wave runner in the garage **COMPLEMENTS FOR THE INTERIOR**• Salon terrace with electrohydraulic opening system• Additional set of enlarged hull side windows: 2 x port and 2 x starboard (total of 8 including standard windows• Lower deck floating staircase in floating steel• Indirect LED lighting behind curtains in master, VIP, and guest staterooms• VIP and guest stateroom TVs mounting behind a mirror panel• Hard latch system: Slides or positive catches on all galley/bar appliances and other drawer units • Master and VIP berths hinging up for additional under bed storage **APPLIANCES**• 2 x Washing machine: Asko• 2 x Dryer: Asko• Cooktop (30"): Miele• Microwave: Sharp• Oven (30"): Miele• Ventilation fan: Miele• Sink/food waste disposal: Insinkerator Compact 3/4 HP• Dishwasher (24"): Miele• Galley upright refrigerator/freezer: Sub-Zero with drawer units • Wine cooler (24"): Sub-Zero• Salon bar refrigerator: Frigonautica• Salon

bar ice maker: Scotsman• Flybridge bar refrigerator: Frigonautica• Flybridge bar ice maker: Indel Webasto, clear-cube CERTIFICATES & DOCUMENTATION HIN plate• Hauling diagrams • List of Options and Upgrades ELECTRICAL SYSTEM• Frequency convertor: ASEA (220V/110V - 50Hz/60Hz) with seamless transfer, including deletion of isolation transformers ENGINE ROOM EQUIPMENT• Electric pump in lieu of manual pump for engine oil change system (not including dirty oil storage tank) THRUSTERS & STABILIZERS• ABT Hydraulic stern thruster ALARMS & SECURITY• Five (5) Camera CCTV IP system: Two (2) fixed cameras in the cockpit and three (3) fixed cameras in the engine room. Includes DVR, one (1) monitor and monitoring on the crew mess TV.

Walkthrough

When one arrives to the aft deck of TIME OUT one will find a spacious deck area with an aft built-in settee plus two tables that come together to make one with additional seating for dining when needed. One can go down the steps from either side of the settee to reach the large stern/swim platform. This is a perfect area for watersports and makes for a safe and convenient place to get on and off the tender. From the swim platform one will have access to a garage area that is equipped to store a tender and jet ski and misc. water toys and dive equipment. From the aft deck, one will go through a doorway to enter the main salon or through a door just to port that allows quick access to the bridge deck. When entering the main salon on TIME OUT one will find a spacious open layout with a large L-shaped settee to starboard, a comfortable chair just aft and a custom coffee table within. The TV for the main salon is in a pop-up built-in on port just aft of the double door that open to the balcony. The large double door mentioned gives access to the port side deck and the custom balcony, perfect for watching the sunset or simply relaxing with a book. Forward is the dining area is a beautiful dining table for 8. The forward bulkhead is a gorgeous back lite white Carrera marble with a carved design, which is ideal for the space. Forward of the dining area to port one will find a day head inboard. Continuing forward one will pass the stairway that goes below to the guest accommodations. Forward of the stairway one will find the on-deck master with ensuite. The master is large, bright and airy with ample storage and hanging locker. There are three-sided windows which offers light, air and a wonderful view. Headed aft from the master one will reach the four guest staterooms from the stairway below. Down the stairs one will land in the guest foyer. Going aft from the guest foyer one will find two identical queen berth cabins with ensuite, ample storage and hanging. Going forward from the guest foyer one will find two additional cabins, one to port with a queen berth that can split to make twins and one to starboard with a twin cabin, both with ensuite, ample storage and hanging. The master and all guest cabins are well-appointed with beautiful stonework and décor as well as state-of-the-art entertainment. Back in the main salon one will go forward to starboard to find the formal entry foyer. Here one will go up to the pilot house where one will find a spacious area with settee, captain's chair and state-of-the-art navigation and communication equipment. From the formal foyer forward, one will find a galley with all the latest equipment. Continuing through the galley one will reach the crew quarters for 5. One can reach the open bridge deck from the pilot house or from the aft deck stairs. Once on the bridge deck one will find a large spacious area with high quality furniture including a large settee, chairs and

tables as well as three loungers. Forward on the starboard side one will find a covered dining area for 10 and a bar to port with 2 stools. Within the bar one will find a fridge, icemaker and storage. TIME OUT is a great example of a beautiful Italian yacht with a gorgeous interior and all the amenities one could need.

Salon

- Bar with fridge, bottle storage and glass holders
- Large settee to starboard
- Coffee table
- TV with hi-low mechanism to port
- Staved wood/timber flooring
- Large windows with sliding glass door to port forward

Dining Area

- Fixed table to accommodate 8-10 guests with chairs
- Storage cupboards
- Staved/wood timber flooring
- Beautiful full marble accent wall forward

Day Head

- Washbasin
- Storage cupboard
- Mirror
- Extractor fan
- Wood flooring

Master Stateroom

The master stateroom is located on the main deck forward and is full beam with large private entryway, closet and ensuite head.

- Kind walkaround berth
- Large front and side windows
- Sofa and TV storage cabinet with hi-low mechanism
- Wardrobe with hanging bar and shelves
- Air treatment unit
- Safe

Master Bath

- Private water closet
- Double bowl washbasin with marble top
- Wall cupboard with mirror
- Marble flooring
- Air-conditioning duct from cabin

VIP Stateroom

- The two VIP cabins include the following:
- Queen bed with four drawers and mattress
- 2 x Nightstands with drawers
- 2 x Big portholes (one of each openable) in stainless steel
- Storage cupboard
- Wall cupboard with hanging bars starboard and port side
- Ceiling lights and reading lights
- Electric blinds
- Audio/video equipment

VIP Bath

• Water closet separated from rest of bathroom • Washbasin marble top • Wall cupboard • Mirror • Shower with handset and shower head and shower door • Air conditioning ducted in from the cabins • Air extractor above the shower • Open able porthole in stainless steel

Guest Staterooms

• The two guest cabins include the following: • Twin beds with two drawers and mattresses • Nightstands and drawers • 2 x Open able portholes in stainless steel and tempered glass • Wall cupboard • Ceiling lights and reading lights • Curtains and soft furnishings • Flooring in carpet • Audio/visual equipment

Guest Baths

• Private water closet • Washbasin marble top • Wall cupboard • Mirror • Shower with handset and shower head and shower door • Air conditioning ducted in from the cabins • Air extractor above the shower • Open able porthole in stainless steel

Crew Quarters

• Captain's quarters with queen berth, closet and ensuite head • 2 x Crew cabins with over/under bunks with ensuite heads • Lounge with kitchenette • Settee with table for dining • Double washer and dryers located in crew area

Galley

• From the galley it is possible to enter the crew mess and laundry room as well as the foyer stairwell on the starboard side • Electric cooktop • Integrated extraction hood • Dishwasher • Conventional oven • Microwave oven • Wall fridge/freezer • Storage cupboards and storages

Wheelhouse

• Raised pilothouse including: • Leather covered dashboard with navigation instruments • Leather covered Pilot's seat electrically adjusting • Small sofa • Area for nautical charts • Storage cabinet • Stairs to access flybridge • Stairs leading down to the starboard side foyer • Bow thruster controls • Rudder angel controls and indicator • Electrical control panel for repeat alarms and controls already on the touchscreen • Touch screen monitor 15" to monitor and control the main onboard systems including: 230V/400V tri-phase and 24V electrical circuits, horn commands, trim tabs, navigation lights, windscreen wiper, E/pump rudder, E/pump fuel transfer, anchor windlass, E/firefighting pump, alarm for high level water in bilge and controls for automatic bilge pumps,

tank level indicators, external and corridor lights• Intercom connected to the engine room• Synoptic alarms and bilge pumps• Manual controls for windscreen wipers, horn, steering wheel E/hydraulic pump and autopilot• Ceiling lights and courtesy lights on stairs• Timber flooring

Navigation and Communication Equipment

• Full Garmin electronics package • Garmin GPSMAP 8622 with charts• Garmin CPSMAP 7616• 5 x Garmin GPSMAP 7610 - 10" multi-touch widescreen displays• Garmin AIS 600• Garmin VHF radio• FLIR thermal camera• Additional electrical conduits between the engine room, pilothouse, flybridge helm station and hard top

Engine Room

• Daily fuel tanks in metal transversally positioned, laminated entirely to the plating, forming the structural bulkhead• Exhaust pipes for main engine, on silent blocks• Handrail in stainless steel between the engines• Extractors and ventilators with fire dump• Metal bench to support pumps and machinery on both starboard and portside• Main engine starting batteries• Battery cut-off and charging switchboard for main engine starting batteries• Flooring on aluminum supports and aluminum powder varnished flooring• Vales, controls and pumps easily accessible for inspectionAft Area:• 2 x Electric gensets• Generator exhaust discharge fitted with mufflers and separators• Metal bench to support pumps and machinery on both starboard and portside• Air conditioning compressors and pumps• Watermaker: Sea Recovery 1800 gallons/day (includes predisposition)• Electric switchboard for shore connections• Service batteries• Control panel and pumps for hydraulic system• Watertight door in metal for escape exist from the engine room cockpit• Walls and ceiling finished in white metal panels• Flooring on aluminum support and aluminum powder varnished flooring• Valves, control and pumps to be easily accessible for inspection

Control Room

• From the cockpit you can access the technical area via a watertight door and an aluminum stairwell. The control room hosts the following:• Main electrical switchboard• Isolation transformer• Battery charges and inverters• Electro-pump bilge system-firefighting system with manifold suction and controlled vales• Boilers with recirculation pump• Air conditioning fan coils• Natural ventilation and forced air extraction• Firefighting system FM200 (USCG approved)• Cylinders and activation system of the firefighting FM200 system of the engine room• Emergency steering system control panel• Watertight door in white varnished metal for accessing to the engine room

Main Machinery

• Main engines: 2 x MTU 16V2000 M96, 2434hp • Engine hours: Port 260 hours; Starboard 260 hours • Double fuel Racor filters for generators • Ball valve thru-hull fittings (engine cooling exhausts remain as gate valves) • Engine oil change system with manual pump • Overboard venting for dryer, in lieu of self-contained ventilation • Additional freshwater purification system with active carbons • Additional grey water pump installed in by-pass • Additional black water pump installed in by-pass • Maneuvering controls: MTU blue line controls • Air-conditioning system: • Tropicalized air conditioning system (twin chillers) with chilled water piping insulation upgrade: 24,000 BTU • Air conditioning condensation draining overboard

Electrical Systems

• Electrical system: 127/220V • Shore power connections: 2 x 220V AC 100A three-phase 60Hz • Generators: 2 x 55kW • Fail-safe galvanic isolator for dry dock • Battery charger: 12V/25A for generator batteries • Aft Glendenning Cablemasters: 2 x CM8 • GFCI distributed in technical room, bathroom, galley and exterior utilizing waterproof boxes in engine room and lazarette • Isolation transformer (not installed in case of optional frequency converter) • Double gang 110V 60Hz USA/EU sockets • 1 x 24V Master switch dedicated to navigation electronics at pilothouse

Tender Garage

• Weathertight area, designed to stow tender and jet ski including: • Garage transom door “weathertight” with electro-hydraulic opening • Electro-hydraulic system for haulage and launching of the tender (maximum length of tender 4.5m) • Fire-fighting system • Fuel vapor detection system • Natural ventilation and forced air extraction fan • Freshwater connection • Ceiling lights • Aluminum hatch covered for emergency access

Broker's Comments

TIME OUT is a new 2019 106' Sanlorenzo built by a very experienced yachtsman. She is offered for sale as the owners have found themselves in new business dealings that do not allow time for the boat. This untimely event has made for an excellent opportunity for a buyer to purchase a like-new Sanlorenzo 106' with all warranties and no waiting. TIME OUT had many upgrades throughout her build and is furnished with the best of furnishings possible with a décor that is embraced by all who have seen her.

Исключения

При продаже яхты исключаются личные вещи владельца.

Отказ от ответственности

Компания предоставляет описание судна или яхты добросовестно, но не может гарантировать точность этой информации, а также не ручается за техническое состояние. Покупатель должен проинструктировать своих агентов или оценщиков исследовать представленную информацию более подробно, по собственному желанию. Продажа судна или яхты, изменение цены или снятие с продажи будет происходить без предварительного уведомления.

ФОТОГРАФИИ

Salon



Salon



Side Deck Open Window



Dining area



Dining Area



Galley



Master Stateroom Entryway



Master Stateroom



Beach Club



Master Stateroom



Master Stateroom



Master Stateroom



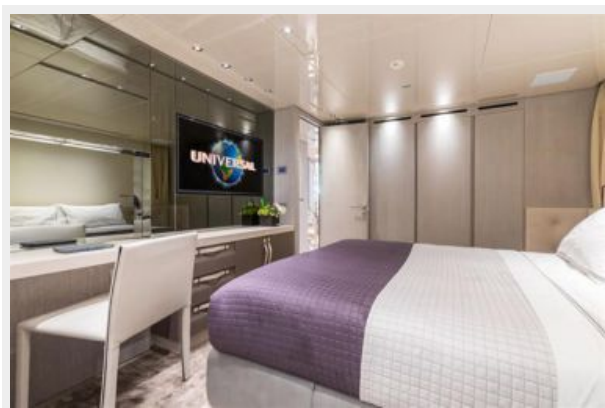
Master Bath



VIP Stateroom



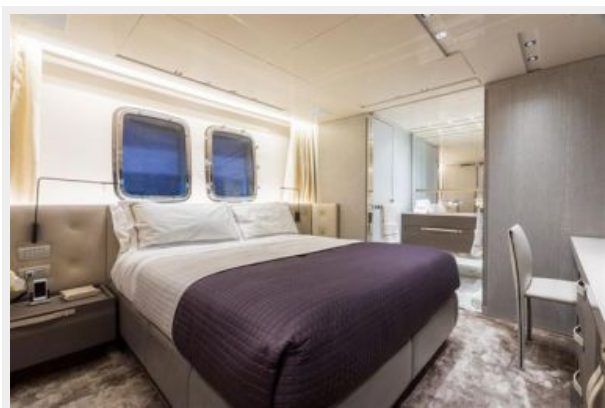
VIP Stateroom



VIP Bath



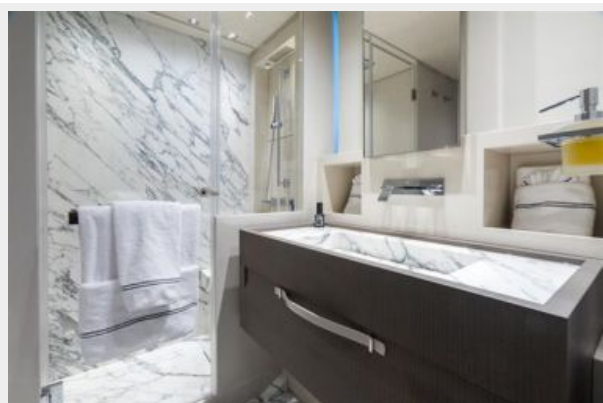
Guest Stateroom



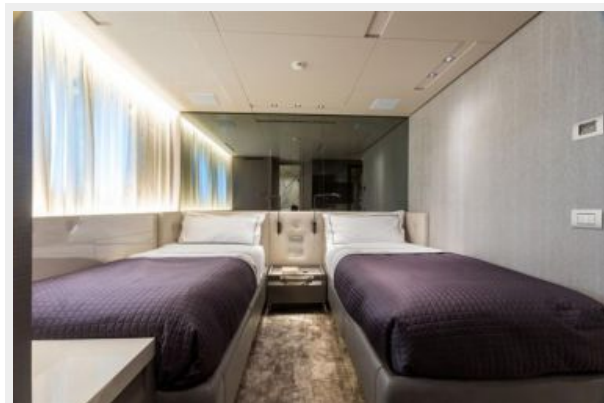
Guest Stateroom



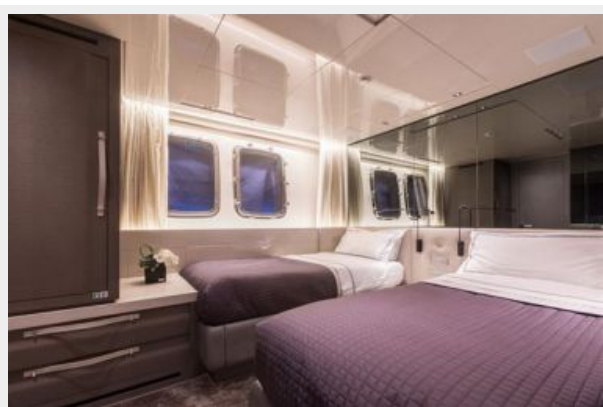
Guest Bath



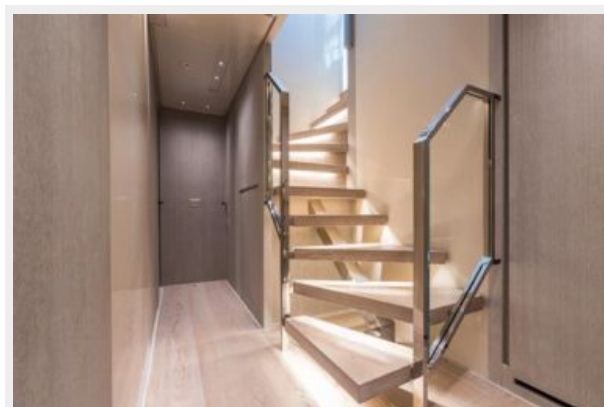
Twin Stateroom



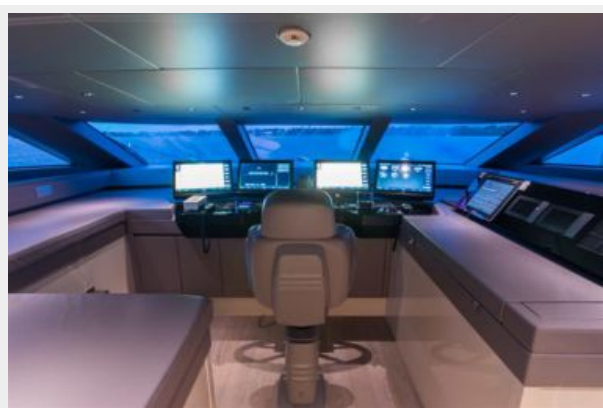
Twin Stateroom



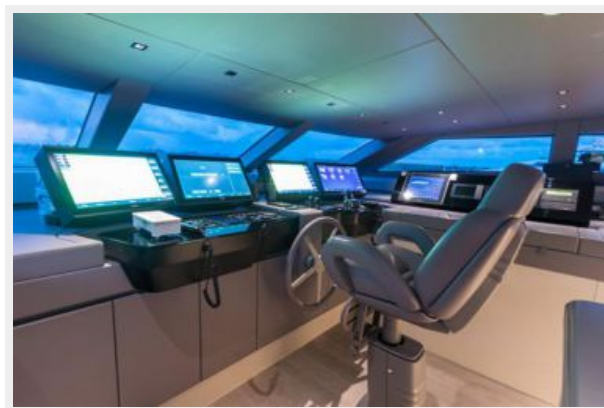
Stairway



Pilothouse



Helm



Flybridge



Sun Deck



Flybridge



Flybridge



Flybridge



Flybridge Bar



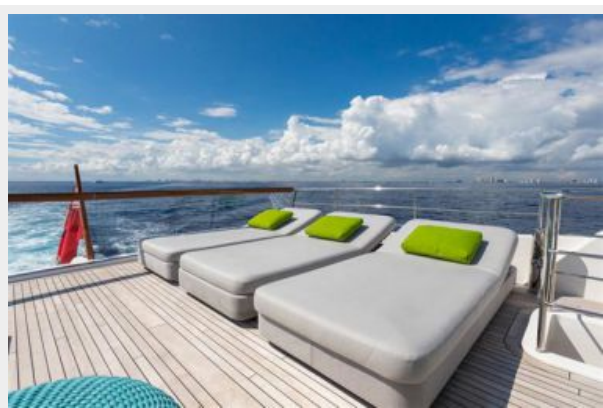
Upper Deck Helm



Upper Deck Helm



Sun Deck



Foredeck



Aft Deck



Aft Deck



Boat Garage



Engine Room



Engine Room



Control Room



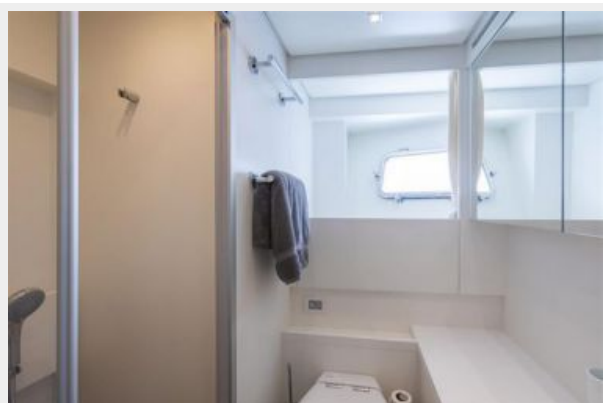
Crew Quarters



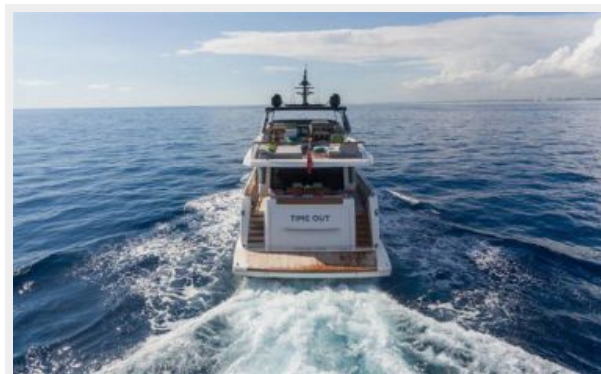
Crew Cabin



Crew Bath



Stern



Port Profile Running



Aerial Upper Deck



Beach Club



Port Profile



Starboard Bow Profile



Starboard Profile



LAYOUT



КОНТАКТЫ

Андрей Шестаков (Andrey Shestakov) – ведущий яхтенный брокер отдела продаж яхт и судов компании Shestakov Yacht Sales Inc. Официальный представитель Shestakov Yacht Sales Inc. для русскоговорящих клиентов в центральном офисе компании в Майами/Форт Лодердейл/Флорида/США.

Контактная информация

Email: andrey@shestakovyachtsales.com

Web: shestakovyachtsales.com

Телефоны

Краснодарский край: **+7(918)465-66-44**

США, Майами, Флорида: **+1(954)274-4435**

Время работы

Понедельник – Суббота: **9:00 - 21:00**
EDT

Воскресенье: **Закрето**

Адрес



Harbour Towne Marina, 850 NE 3rd St,
STE 213, Dania, FL 33004