

CHECKED OUT — WESTPORT



Судостроитель: WESTPORT

Год постройки: 2007

Модель: Моторная яхта

Цена: **ЦЕНА ЯХТЫ ПО ЗАПРОСУ**

Местонахождение: United States

Длина общая: 112' 0" (34.14m)

Ширина: 21' 9" (6.63m)

Мин. осадка: 5' 5" (1.65m)

Крейс. скорость: 20 Kts. (23 MPH)

Макс. скорость: 26 Kts. (30 MPH)

Купить **CHECKED OUT — WESTPORT** а также выбрать подходящую вам яхту из нашего каталога яхт вам поможет опытный яхтенный брокер Андрей Шестаков. На сегодняшний день компания **Shestakov Yacht Sales Inc.** имеет большое количество яхт в собственном списке продаж, а также тесно сотрудничает со всеми крупными яхтенными производителями по всему миру.

Для того чтобы купить яхту **CHECKED OUT — WESTPORT** а также проконсультироваться по любому вопросу связанному с покупкой, продажей, чартером яхт позвоните по телефону **+7(918)465-66-44**.

ОГЛАВЛЕНИЕ

ОГЛАВЛЕНИЕ	2
ХАРАКТЕРИСТИКИ	4
Основная информация	4
Размеры	4
Скорость, вместимость и масса	4
Размещение	4
Корпус и палуба	5
Информация о двигателе	5
ПОДРОБНОЕ ОПИСАНИЕ	6
Main Salon & Dining Area	6
Galley	6
Master Stateroom	7
VIP Guest Stateroom, Forward	7
Twin Guest Stateroom, Port	8
Twin Guest Stateroom, Stbd	8
Pilothouse Electronics & Equipment	9
Flybridge Electronics	10
Flybridge Equipment	10
Deck Equipment	11
Aft Deck & Swim Platform	12
Crew Quarters	13
Lazarette / Utility Room	14
Engine Room, Mechanical & Electrical Equipment	14
Fuel Burn	15
Exclusions	15
Исключения	15
Отказ от ответственности	16
ФОТОГРАФИИ	17

Main Salon / Dining	17
Dining Area	17
Day Head	18
Galley	18
Pilothouse	18
Pilothouse Helm	18
Lower Companionway	18
Master Stateroom	19
Master His / Her Bath	19
VIP Guest Stateroom	19
VIP Guest Bath	19
Twin Guest Stateroom	19
Twin Guest Bath	20
Twin Guest Stateroom	20
Guest Bath	20
Flybridge	20
Bridge Bar	21
Flybridge Jacuzzi	21
Bridge Deck	21
Forward Deck	21
Aft Deck	21
Swim Platform	22
DJI_0060	22
КОНТАКТЫ	24
Контактная информация	24
Телефоны	24
Время работы	24
Адрес	24

ХАРАКТЕРИСТИКИ

Основная информация

Тип судна: Моторная яхта

Подкатегория: Raised Pilothouse

Модельный год: 2007

Год постройки: 2007

Страна: United States

Верх: Hardtop

Открытая палуба мостика: Да

Размеры

Длина общая: 112' 0" (34.14m)

Ширина: 21' 9" (6.63m)

Мин. осадка: 5' 5" (1.65m)

Скорость, вместимость и масса

Крейс. скорость: 20 Kts. (23 MPH)

Макс. скорость: 26 Kts. (30 MPH)

Вместимость воды: 1025 Gallons

Вместимость сточного бака: 600 Gallons

Объем топливного бака: 5500 Gallons

Размещение

Всего кают: 4

Спальные места: 8

Всего ком. состава: 5

Каюта капитана: Да

Каюты экипажа: 3

Корпус и палуба

Материал корпуса: Fiberglass

Дизайнер корпуса: Westport

Дизайнер экстерьера: Westport

Информация о двигателе

Двигатели: 2

Производитель: MTU

Модель: 16V-2000

Тип двигателя: Inboard

Тип топлива: Diesel

ПОДРОБНОЕ ОПИСАНИЕ

Main Salon & Dining Area

- Neutral creme carpeting throughout ('19)
- New vinyl headliner ('19)
- New LED lighting throughout ('19)
- Custom wood valances w/ indirect rope lighting
- Overhead stereo speakers
- L-shaped sectional sofa, port
- Samsung 60" TV
- Upholstered ottoman/table
- (2) Upholstered occasional chairs
- (8) Fixed windows, port & stbd, w/ custom pleated drop shades
- Wet bar w/ granite top, glass storage, U-line refrigerator w/ icemaker

Dining Area:

- New headliner ('19)
- New carpeting ('19)
- Custom dining table with burle inlay
- (8) Upholstered armless dining chairs
- Architectural recess w/ overhead lighting
- Built-in buffets, port & stbd, w/lofted storage for china, crystal & flatware
- (2) Sconces

Galley

- KitchenAid side-by-side refrigerator/freezer
- (2) Asko D3251 dishwashers
- Dacor Ceran 5-burner electric cook top
- Dacor self-cleaning convection oven
- (2) Asko D3251 dishwashers
- GE Profile microwave
- U-line icemaker
- Work island w/ granite top & storage below
- Broan trash compactor
- Dual Kohler stainless sink w/ Ghrohe faucet
- Insinkerator garbage disposal
- Raised dinette w/ U-shaped seating w/ storage below
- Granite top table
- Peko laminated plank sole
- New headliner ('19)

- Recessed overhead lights
- (2) Recessed overhead speakers
- Granite countertops
- Built-in storage lockers, forward
- (4) Recessed lights in soffit, at forward cabinetry
- Custom wood valances w/ indirect rope lighting
- Panasonic LCD TV
- Marine Air A/C control
- U-line icemaker
- Work island w/ granite top & storage below

Master Stateroom

- King-size berth w/storage below
- (2) Built-in nightstands
- Built-in dresser drawers w/burle wood top
- New carpeting ('19)
- New headliner ('19)
- Overhead stereo speakers
- Recessed overhead lights
- Portholes in recessed areas w/ drop shades
- Walk-in cedar-lined hanging locker, starboard aft
- Upholstered settee, port
- Marine A/C control

Master His & Her Bath:

- Granite vanity tops w/sinks & custom fixtures
- Royal Flush toilet by Headhunter
- Linen locker
- Mirrored medicine locker
- Mirrored panel on forward bulkhead
- Marble shower, centerline w/ seamless glass enclosure
- Custom wall coverings
- (2) Fixed shower heads

VIP Guest Stateroom, Forward

- Island queen berth, centerline forward, w/drawer & storage beneath
- Overhead escape hatch w/ interior cover with rope lighting
- Recessed overhead lights
- (2) Recessed overhead stereo speakers
- Wall-mounted reading lights

- Recessed bookcases, port and starboard forward at berth
- Mirrored bulkhead, forward
- Custom fluted moldings at soffit w/indirect rope lighting
- Walk-in cedar closet, aft, with overhead light
- Full-length mirror on door to hanging locker
- Samsung LED television
- Denon A/V receiver
- Samsung Blu Ray player
- New carpeted ('19)
- New headliner ('19)VIP Head:
 - Marble tiled sole
 - Overhead lights
 - Royal Flush head by Headhunter
 - Vanity w/marble counter & backsplash, sink w/custom fixtures
 - Mirror over vanity
 - Stall shower w/ glass door, overhead light, hand-held shower head

Twin Guest Stateroom, Port

- Twin berths which convert to kings
- (2) Nightstands w/ 3-drawers
- (2) Recessed overhead stereo speakers
- (3) Recessed overhead light fixtures in aft soffit
- Indirect lighting above valances
- Fabric-covered walls w/ wood panels below
- Mirrored panel on aft bulkhead
- Single berth, port and starboard
- (2) Nightstands w/ 3-drawers
- Marine Air A/C control
- (2) Reading lamps at head of berth, port and starboard
- (2) Portholes in recessed area behind drop shades
- Panasonic LCD TV
- Denon A/V receiver
- Cedar-lined hanging locker w/overhead light
- Full-length mirror on locker door
- Five-drawer dresser, forward

Twin Guest Stateroom, Stbd

- Single berths, inboard and outboard w/ indirect rope lighting
- Mirrored panel at head of each berth

- Nightstand w/burl wood counter and three drawers
- Marine Air conditioning control
- Bulkhead-mounted reading lamps at each berth
- (2) Portholes in recessed area behind drop shades
- Panasonic LCD TV
- Denon A/V receiver
- Cedar-lined hanging locker
- Full-length mirror on hanging locker door
- New carpeting ('19)
- New headliner ('19)
- Recessed overhead lights
- (2) Recessed overhead stereo speakers
- Indirect lighting above valances
- Fabric-covered walls with wood panels below
- Access to private bath

Pilothouse Electronics & Equipment

- (2) Furuno Black Box 96-mile radars
- Simrad AP50 autopilot
- Garmin 7212 GPS
- Naiad MultiSea II digital stabilizer control
- Bow thruster control
- Furuno 1200L color video sounder
- (2) MTU engine displays
- New Garmin ('19)
- Jastram rudder angle indicator
- Jastram helm order indicator
- Ritchie compass
- (2) MTU engine displays
- MTU single-lever engine controls
- Engine start and stop switches
- Aft Navigation station with;
- Furuno GP-150 GPS,
- Furuno FS-1503 SSB radio
- View Sonic monitor
- Jog steering control
- (2) Icom M602 VHF radios
- Elbex EXS145 CCTV monitor
- Northern Lights generator remote start/stops, emergency engine controls
- (2) PCs w/switch control & Nobeltec charting software
- (6) NEC LCD monitors for radars, sounder, CCTV, Westport systems monitor, chart plotter
- Worldwide SAT/TV/InternetPilothouse Equipment:

- (2) Stidd pedestal mounted helm chairs
- Teak steering wheel
- Exalto wiper/washer switches
- Sentry dry chemical fire extinguisher
- Updated iPad Crestron system
- Carlisle & Finch searchlight control
- Electrical panel locker, starboard of helm
- (2) Marine Air A/C control panels
- Pilothouse 12v DC panel
- Pilothouse 24v DC panel
- (2) DC voltmeters
- Pilothouse 120v AC panel
- (2) DC ammeters
- Panasonic Hybrid phone
- Curved bench seating
- Dual pedestal-mounted table
- Mirrored panels on aft bulkhead
- Steps to bridge, aft port w/ courtesy lights
- Stairway to foyer w/ courtesy lights and handrail

Flybridge Electronics

- Garmin Plotter
- Simrad AP50 autopilot
- (2) Electronic engine displays
- MTU electronic engine controls
- B&G Hydra 2000 speed/depth/wind indicator
- Bow thruster control
- Nauticomp monitors
- Icom IC-M602 VHF
- Jastram rudder order indicator
- Jastram rudder angle indicator
- Stainless steel steering wheel
- Engine start and stop buttons
- Wing station, port & stb, w/MTU single-lever engine controls, Jog control, thruster control, engine start/stop switches & rudder angle indicator

Flybridge Equipment

- Westport hardtop
- EZ2CY forward glass enclosure
- Teak decks

- Stidd double helm chair w/ foot rest & dual pedestals
- Stidd companion chair w/foot rest
- Helm station cover
- Custom removable windscreen on bridge
- L-shaped bench seating w/cushions, starboard
- (2) Granite top oval tables w/stainless pedestal
- Wet bar w/granite top, sink, custom cabinet w/ Fire Magic BBQ grill, Linx refrigerator, Scotsman icemaker & storage lockers, to port
- (4) Teak & stainless bar stools
- Outdoor stereo speakers
- Sliding door to pilothouse, port forward
- Deck courtesy lights
- Carlisle & Finch searchlight control

Boat Deck, Aft:

- Nautical Structures HCC-2000EX hydraulic davit w/telescopic boom extension
- L-shaped bench seating w/cushions & covers, stbd
- Oval granite top table, stbd
- Jacuzzi w/upholstered cushions (doubles as large sunpad when closed)
- (2) Zodiac 8-person life rafts
- Stairwell to aft deck, starboard
- Non-skid deck
- Stern light
- Stern flagstaff
- McMurdo EPIRB
- Stainless steel safety guard rails

Deck Equipment

- Non-skid fiberglass deck
- Boarding gates, port & stbd
- Side deck entry sliding doors, port & stbd
- Marquipt lightweight composite boarding ladder
- Manual passerelle boarding ladder, recessed alcove, stbd
- Marquipt dive ladder
- (3) Pilothouse windshield wipers
- Stainless steel rails, port & stbd, on bulwark
- Boarding gates, port & stbd
- Side deck entry sliding doors, port & stbd
- Deck courtesy lights, port & stbd
- (4) Spring cleats, port & stbd
- CCTV security cameras, port & stbd side decks

- Overhead recessed lights at side deck doors

Foredeck:

- Non-skid fiberglass deck
- Stainless steel bow rail & stanchions w/flagstaff
- (2) Maxwell 4500 hydraulic anchor windlasses w/ capstan & wildcats
- Anchor chain wash down, port & stbd
- Bow cleats, port & stbd
- Watertight hatch to chain locker
- Circular bow seating area w/cushions
- Escape hatch
- Outdoor stereo speakers
- Bosun's locker w/ storage
- Freshwater washdown, port at bow seat
- (2) 300-lb stockless anchors
- Anchor chains, 300' port & 400' starboard

Aft Deck & Swim Platform

- Teak decks
- Aft bench seating w/ cushions
- Custom high gloss table w/ double stainless pedestals
- (4) Teak adjustable chairs w/ cushions
- Built-in wet bar w/granite top, sink, Grohe faucet, Hoshizaki icemaker, Whirlpool refrigerator & storage locker
- (3) Teak high back bar chairs w/cushions
- Overhead recessed lights
- Bulwark storage lockers, port & stbd outboard
- Entrance to crew area, stbd
- Staircase w/ teak steps to bridge w/sliding companionway hatch & stainless handrails, stbd
- Double glass sliding doors to salon
- Custom built-in TV in weatherproof enclosure
- CCTV security camera
- Dual stairs w/ teak steps from aft deck, port and starboard

Swim Platform:

- Teak replaced on swim platform & stairs ('17)
- Rocket launcher fishing station & rod holders
- (3) Courtesy lights in each stairwell
- Stainless steel handrails on transom, port & stbd stairwells
- Maxwell 2200 electric warping winches, port & stbd, w/ deck switches
- Stern cleats, port & stbd

- Freshwater washdown
- Dockside water connection
- Locker centerline w/ gas hose pneumatic pump
- Locker w/ (2) 100-amp shore power cords on retractable reels
- Cablemaster control switches
- (4) Stainless steel rails at stern
- Watertight door at transom to crew companionway
- Locker w/ freshwater shower, dockside phone/cable TV inlet
- (4) Underwater lights

Crew Quarters

Captain's Cabin, Port:

- Carpeted sole
- Vinyl headliner w/recessed lights, one emergency light
- (2) Overhead stereo speakers
- Cedar-lined hanging locker w/light & mirror
- Kidde dry chemical fire extinguisher
- Double berth w/ storage
- Reading light
- Porthole w/ pleated drop shade
- Marine Air A/C controls
- Smoke alarm
- Carbon monoxide alarm
- Samsung LCD TV
- Samsung DVD player
- Desk w/ drawers
- Raymarine ST60 display
- Entrance via crew companionway
- Carpeted sole
- Vinyl headliner with four recessed lights
- Twin berths
- Reading light at each berth
- Samsung TV at each berth
- Carbon monoxide monitor
- Smoke alarm

Crew Quarters, Stbd:

- Entrance via crew companionway
- Carpeted sole
- Vinyl headliner w/ (4) recessed lights
- Twin berths

- Reading lights
- Samsung TV at each berth
- Carbon monoxide monitor
- Smoke alarm
- Crew Lounge:
- Entrance via aft deck & transom
- (8) Steps down from aft deck
- Sub-Zero refrigerator
- Miele washer/dryer
- Sharp microwave
- Dinette
- Toshiba TV
- Counter w/ sink
- GE freezer

Lazarette / Utility Room

- (2) Glendenning 100-amp shore power cords w/cable retriever
- Shore power main inlet breakers
- (2) Isolation transformers
- Entrance to rudder compartment via watertight access hatch
- Dry chemical fire extinguisher
- Folding manual deployed passerelle

Engine Room, Mechanical & Electrical Equipment

- (2) Sea Recovery AquaWhisper 1200 GPD watermakers
- (3) Marine Air chilled water A/C system w/ 5-ton compressors
- Northern Lights 65KW Generators in sound shields
- Naiad stabilizer system
- Stabilizer fin units, port and starboard
- Dual pump pressure gauges to stabilizer system
- Hydraulic bow thruster reservoir, stbd aft
- (2) MTU electronic engine displays
- Engine ignition and start switches
- (2) 110v bilge pumps to five-compartment manifold
- Dual Sea Pro fuel filters to engines
- Fuel transfer pump w/ Fill Rite monitor
- Fuel supply, transfer & priming valves at forward bulkhead
- (8) AGM batteries in covered boxes
- (2) Engine fuel priming pumps
- Oil change pump w/ quick disconnect hoses & fittings
- Battery cut-off switches for main engines

- (2) Maxwell capstan breakers
- (3) Marine Air chilled water A/C system w/ 5-ton compressors
- (2) Headhunter Mach 5 freshwater pressure pumps
- Headhunter Stingray freshwater pressure pump
- Hydraulic steering reservoir, stbd
- (2) MTU electronic engine displays
- Engine ignition and start switches
- Freshwater valves, starboard outboard under sole
- Hydraulic bow thruster reservoir, stbd aft
- (2) Waste discharge pumps under port generator
- Fiberglass mufflers to each generator
- 12v Battery at each generator w/ cut-off switch
- Variable speed/direction blower, port and stbd
- Newmar 24v battery charger to 24v ship's service bank
- Newmar 24v battery charger to 12v ship's service bank
- Newmar 24v battery charger to main engine start bank
- Newmar 12v battery charger to generator start batteries
- Bow thruster & anchor windlass hydraulic system PTO off stbd generator
- Headhunter Tidal Wave type II waste treatment system
- Headhunter Stingray saltwater supply pump
- Work bench & vise
- Craftsman 8-drawer tool chest
- Closed-circuit television camera

Fuel Burn

RPM'S	KNOTS	MILES	Usable Fuel	GPH	GPM
1200	12 Knots	2870	5000 Gal	24	1.7
1500	15 Knots	1730	5000 Gal	50	2.9
1800	18 Knots	1200	5000 Gal	86	4.2
2100	22 Knots	960	5000 Gal	132	5.2
2400	26 Knots	676	5000 Gal	192	7.4

Exclusions

- The name, "CHECKED OUT" is registered and does not convey with the sale of the vessel

Исключения

При продаже яхты исключаются личные вещи владельца.

Отказ от ответственности

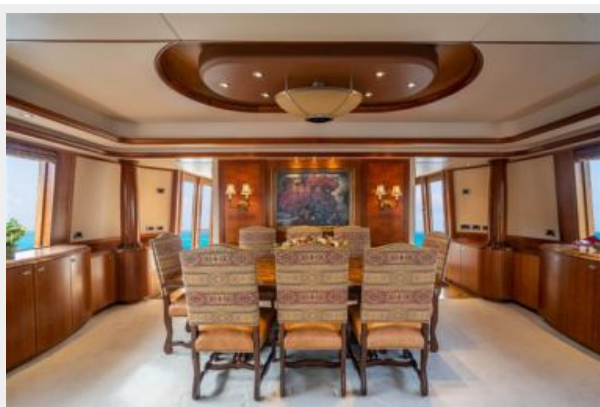
Компания предоставляет описание судна или яхты добросовестно, но не может гарантировать точность этой информации, а также не ручается за техническое состояние. Покупатель должен проинструктировать своих агентов или оценщиков исследовать представленную информацию более подробно, по собственному желанию. Продажа судна или яхты, изменение цены или снятие с продажи будет происходить без предварительного уведомления.

ФОТОГРАФИИ

Main Salon / Dining



Dining Area



Day Head



Galley



Pilothouse



Pilothouse Helm



Lower Companionway



Master Stateroom



Master His / Her Bath



VIP Guest Stateroom



VIP Guest Bath



Twin Guest Stateroom



Twin Guest Bath



Twin Guest Stateroom



Guest Bath



Flybridge



Bridge Bar



Flybridge Jacuzzi



Bridge Deck



Forward Deck



Aft Deck





Swim Platform



DJI_0060





КОНТАКТЫ

Андрей Шестаков (Andrey Shestakov) – ведущий яхтенный брокер отдела продаж яхт и судов компании Shestakov Yacht Sales Inc. Официальный представитель Shestakov Yacht Sales Inc. для русскоговорящих клиентов в центральном офисе компании в Майами/Форт Лодердейл/Флорида/США.

Контактная информация

Email: andrey@shestakovyachtsales.com

Web: shestakovyachtsales.com

Телефоны

Краснодарский край: **+7(918)465-66-44**

США, Майами, Флорида: **+1(954)274-4435**

Время работы

Понедельник – Суббота: **9:00 - 21:00**
EDT

Воскресенье: **Закрето**

Адрес



Harbour Towne Marina, 850 NE 3rd St,
STE 213, Dania, FL 33004