

TRUE LOVE — HUNTER



Builder: HUNTER

LOA: 30' 0" (9.14m)

Year Built: 2002

Beam: 10' 9" (3.28m)

Model: Cruising Sailboat

Price: PRICE ON APPLICATION

Location: United States

Our experienced yacht broker, Andrey Shestakov, will help you choose and buy a yacht that best suits your needs **True Love — HUNTER** from our catalogue. Presently, at Shestakov Yacht Sales Inc., we have a wide variety of yachts available on our sale's list. We also work in close contact with all the big yacht manufacturers from all over the world.

If you would like to buy a yacht **True Love — HUNTER** or would like help answering any questions concerning purchasing, selling or chartering a yacht, please call **+1(954)274-4435**

TABLE OF CONTENTS

TABLE OF CONTENTS	2
SPECIFICATIONS	4
Overview	4
Basic Information	4
Dimensions	4
Speed, Capacities and Weight	4
Accommodations	4
Hull and Deck Information	4
Engine Information	5
DETAILED INFORMATION	6
Overview	6
Exclusions	7
Disclaimer	8
PHOTOS	9
2	9
4	9
5	9
6	9
7	9
8	9
9	10
10	10
11	10
12	10
13	10
14	10
15	11
16	11

18	11
17	11
19	11
20	11
22	12
21	12
23	12
CONTACTS	13
Contact details	13
Telephones	13
Office hours	13
Address	13

SPECIFICATIONS

Overview

“True Love” is a one-owner freshwater boat that has lived and sailed in Buffalo NY since RCR sold it new in 2002. She is a lot of boat in a 30-footer, with maximized interior cabin space and a large entertainment sized cockpit. The furling main and jib make it very easy to sail, within minutes of leaving the dock! This Hunter has zero exterior wood and the design is simply low maintenance. Buy it now and be ready for spring 2020!

Basic Information

Category: Cruising Sailboat

Model Year: 2002

Year Built: 2002

Country: United States

Dimensions

LOA: 30' 0" (9.14m)

LWL: 29' 11" (9.12m)

Beam: 10' 9" (3.28m)

Speed, Capacities and Weight

Displacement: 7150 Pounds

Water Capacity: 40 Gallons

Fuel Capacity: 20 Gallons

Accommodations

Total Cabins: 1

Hull and Deck Information

Hull Material: Fiberglass

Engine Information

Engines: 1

Manufacturer: Yanmar

Model: 2GM

Engine Type: Inboard

Fuel Type: Diesel

DETAILED INFORMATION

Overview

Features:

- In-Mast Furling Mainsail
- Solid Boom Vang
- Mainsheet Traveler on Stainless Arch
- Raytheon ST 60 Knotmeter/Log
- Raytheon ST 60 Depth
- Stereo with Speakers mounted
- Raytheon VHF
- 30 Amp Battery Charger
- Microwave Oven
- 12V Refrigeration
- Lewmar Portlights
- Corian Countertops
- Shoal Keel
- Wheel Console with guard, compass, table
- Transom Swim Platform with Ladder
- Genoa Furler with 110% jib
- Hot & Cold Pressure Water with Shower
- Two Burner Propane Stove
- 8 Opening Ports with Hatches and Screens
- Two Batteries
- 110V Shore Power with Cord
- Stainless Handrails
- Blue Interior Fabric Cushions
- Two Biminis with Adjustable Framing, Navy Blue
- Cockpit Cushions
- Steel Cradle
- VC 17 Bottom Paint
- Docklines and Fenders

Interior Accommodations:

The Hunter 306 features a large vee berth forward, spacious salon with convertible dinette, comfortable nav station to starboard and an L-shaped galley to port. Aft of the companionway is a double athwart berth to starboard and a large combined head/shower is behind the nav station.

Galley

The galley is equipped with a Force 10 2-burner propane stove top, icebox and SS sink with hot/cold water and includes stocked galley ware and dishes.

Exterior

The rig is the Hunter standard B&R system with in-mast furling and a 110% head sail on a Furlex furler. The mainsheet and traveler are mounted over the cockpit on the Hunter signature SS arch. Lines are all lead aft to the cockpit to 6 line stoppers and 3 Lewmar winches. Two separate line stoppers for the jib sheets are available to allow use of the winches on different lines.

The walk-thru transom features a hot/cold shower at the swim platform with fold-down ladder.

The navy blue Sunbrella bimini was added by Custom Covers & Canvas

There are perch seats mounted on each side of the stern rail, which everyone loves.

Overview:

The Hunter 306 has a lot of interior volume and is very comfortable above and below. The large cockpit is great for entertaining. The 10-foot 9-inch beam boasts a spacious salon, as well as two private staterooms, one forward and one aft, a large head, a full-size galley, and even a nav station for charting the course. Eight opening hatches and ports provide plenty of light and the headroom is fantastic. The large beam also gives the captain and crew plenty of room in the cockpit. Deep, angled coamings make any passage a safe and comfortable one. The cockpit table with folding leaves makes entertaining easy. Two integral stern rail seats provide guests the best seats in the house. Standard features include Edson's rack and pinion steering, Lewmar self-tailing winches, a Furlex headsail furling, the B&R backstay-less rig which Hunter is known for, and a Yanmar 18-horsepower inboard diesel.

Exclusions

Owner's personal belongings.

Disclaimer

The Company offers the details of this vessel or yacht in good faith but cannot guarantee or warrant the accuracy of this information nor warrant the condition of the vessel. A buyer should instruct his representatives, agents, or his surveyors, to investigate such details as the buyer desires validated. This vessel or yacht is offered subject to prior sale, price change, or withdrawal without notice.

PHOTOS

2



4



5



6



7



8



9



10



11



12



13



14



15



16



17



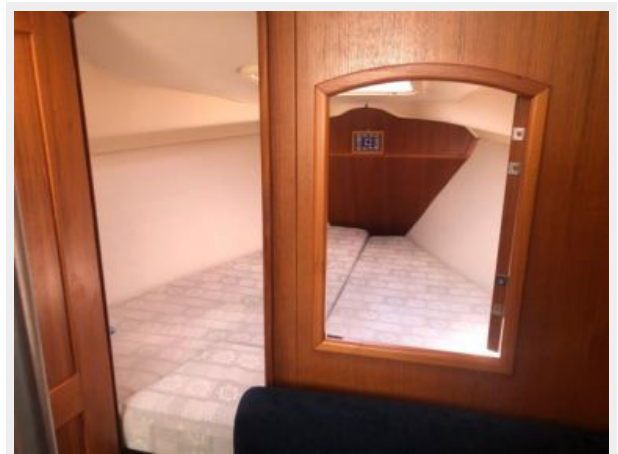
18



19



20



21



22



23



CONTACTS

Andrey Shestakov, leading yacht broker of the sales department of Shestakov Yacht Sales Inc. Shestakov Yacht Sales Inc., the official representative of the Miami/Fort Lauderdale FL headquarters.

Contact details

Email: andrey@shestakovyachtsales.com

Web: shestakovyachtsales.com/en/

Telephones

USA: +1(954)274-4435

Office hours

Monday – Saturday: **9:00 - 21:00** EDT

Sunday: **closed**

Address



Harbour Towne Marina, 850 NE 3rd St,
STE 213, Dania, FL 33004