

VANQUISH — WEST BAY



Builder: WEST BAY

Year Built: 2003

Model: Motor Yacht

Price: PRICE ON APPLICATION

Location: United States

LOA: 95' 0" (28.96m)

Beam: 20' 0" (6.10m)

Max Draft: 5' 4" (1.63m)

Cruise Speed: 18 Kts. (21 MPH)

Max Speed: 24 Kts. (28 MPH)

Our experienced yacht broker, Andrey Shestakov, will help you choose and buy a yacht that best suits your needs **VANQUISH — WEST BAY** from our catalogue. Presently, at Shestakov Yacht Sales Inc., we have a wide variety of yachts available on our sale's list. We also work in close contact with all the big yacht manufacturers from all over the world.

If you would like to buy a yacht **VANQUISH — WEST BAY** or would like help answering any questions concerning purchasing, selling or chartering a yacht, please call **+1(954)274-4435**

TABLE OF CONTENTS

TABLE OF CONTENTS	2
SPECIFICATIONS	5
Overview	5
Basic Information	5
Dimensions	5
Speed, Capacities and Weight	5
Accommodations	6
Hull and Deck Information	6
Engine Information	6
DETAILED INFORMATION	7
Overview	7
Construction	7
Tankage	7
Interior Arrangement	7
Main Deck	8
Pilothouse	9
Crew Quarters	9
Deck Arrangement and Equipment	9
Cockpit	10
Boat Deck	11
Ground Tackle	11
Davit and Tender	11
Engine Room	12
Communication, Navigation, and Electronics	12
Safety and Security Equipment	13
Exclusions	13
Disclaimer	13
PHOTOS	14

Salon	14
Salon	14
Salon	14
Salon	14
Salon	14
Dining Area	14
Dining Area	15
Dining Area	15
Stairway to Upper Deck	15
Galley	15
Galley	15
Galley	15
Master Stateroom	16
Master Stateroom	16
Master Stateroom	16
Master Stateroom	16
Master Stateroom	16
Master Bath	16
Master Bath	17
VIP Stateroom	17
VIP Bath	17
VIP Stateroom	17
VIP Bath	18
VIP Bath	18
Twin Stateroom	18
Pilothouse	18
Helm	18
Pilothouse	18
Pilothouse Seating	19

Cockpit	19
Aft Deck	19
CONTACTS	20
Contact details	20
Telephones	20
Office hours	20
Address	20

SPECIFICATIONS

Overview

Located in a Foreign Trade Zone in Fort Lauderdale, FL - call for an appointment!

VANQUISH was originally built as an 87-foot West Bay Sonship designed and built by the West Bay Sonship Company of Delta, British Columbia, Canada in 2003. She has been extended with a well-executed fiberglass cockpit, swim step and hull extension to a reported 97 feet. From visual inspection, it appears to be well designed and well executed in keeping with the quality of the original build. VANQUISH has a raked bow, flush decks, cockpit extension with integral swim platform, and raised pilothouse. She is twin diesel engine powered. She is finished in an all-white color with dark blue boot stripe and silver check stripe. She has a teak grate insert on the swim step. There is teak overlay decking on the cockpit deck and aft deck. The cockpit covering boards are finished in natural teak. There is a molded nonskid foredeck, side decks, and boat deck.

Basic Information

Category: Motor Yacht

Model Year: 2003

Year Built: 2003

Country: United States

Dimensions

LOA: 95' 0" (28.96m)

Beam: 20' 0" (6.10m)

Max Draft: 5' 4" (1.63m)

Speed, Capacities and Weight

Cruise Speed: 18 Kts. (21 MPH)

Max Speed: 24 Kts. (28 MPH)

Gross Tonnage: 123 Pounds

Water Capacity: 600 Gallons

Holding Tank: 200 Gallons

Fuel Capacity: 2750 Gallons

Accommodations

Total Cabins: 3

Sleeps: 6

Crew Cabin: 2

Crew Sleeps: 3

Hull and Deck Information

Hull Material: Fiberglass

Deck Material: Teak

Hull Configuration: Semi-Displacement

Hull Color: White

Hull Designer: West Bay

Exterior Designer: Jack Sarin

Engine Information

Engines: 2

Manufacturer: Caterpillar

Model: 3412

Engine Type: Inboard

Fuel Type: Diesel

DETAILED INFORMATION

Overview

Located in a FTZ (Free Trade Zone) in Fort Lauderdale, FL.

VANQUISH was originally built as an 87-foot West Bay Sonship designed and built by the West Bay Sonship Company of Delta, British Columbia, Canada in 2003. She has been extended with a well-executed fiberglass cockpit, swim step and hull extension to a reported 97 feet. From visual inspection, it appears to be well designed and well executed in keeping with the quality of the original build. VANQUISH has a raked bow, flush decks, cockpit extension with integral swim platform, and raised pilothouse. She is twin diesel engine powered. She is finished in an all-white color with dark blue boot stripe and silver check stripe. She has a teak grate insert on the swim step. There is teak overlay decking on the cockpit deck and aft deck. The cockpit covering boards are finished in natural teak. There is a molded nonskid foredeck, side decks, and boat deck.

Construction

She is of all hand laid up fiberglass construction. The decks and bulkheads have a core material. She has four watertight bulkheads. The hull topsides have a 1" Divinacell core. The bottom has a 1 3/8" core. She has four main longitudinals, which start in the transom, taper into the bow, and act as engine beds in the engine room. The extension has been built in accordance with original West Bay Sonship standards. The design is well executed. It flows seamlessly and compliments the original design.

Tankage

She carries 2,750 gallons of diesel fuel in (3) separate welded aluminum tanks across the forward bulkhead of the engine room. The centerline (day tank) contains 650 gallons. Each wing tank contains 1,050 gallons. She carries 600 gallons of potable water in a single polyethylene tank beneath the owner's accommodations. She has a single black water tank forward centerline of 200 gallons and individual gray water automatic sump pump-outs.

Interior Arrangement

The lower guest accommodations are accessed by a curved carpeted companionway with courtesy lights and varnished handrails to starboard from the main deck and galley. There is a center guest passageway. Forward in the passageway is a VIP stateroom with queen-size berth extending aft from the mirrored forward bulkhead. In the overhead are hinged opening hatches with privacy and mosquito screens letting into the foredeck. Entertainment in this cabin is

provided by the following: • Samsung Flat Screen TV • DirecTV Receiver • Samsung Blu-ray 3D player • Marantz AV Model NR1402 Surround Sound Receiver • Crestron Multifunction Remote • Apple TV This cabin is furnished with wood built-in cabinetry and a cedar-lined hanging locker. Aft to starboard is a private head with toilet, vanity sink, and stall shower. The head is finished with simulated wood soles, vinyl wall coverings, mirrored overheads, and wood cabinetry and built-ins. The vanity top is solid surface. Directly aft of the VIP cabin to port is a shared head with toilet, vanity sink, stall shower, and opening portlight. This head is likewise finished in simulated wood flooring, solid surface countertop, mirrored overheads, and vinyl wall coverings. There is wood cabinetry and built-ins. Leading aft down a set of carpeted treads with courtesy lights and grab rail is the after passageway. Located to starboard is a laundry center with GE stacked washer/dryer unit. To port is a guest stateroom with twin lower berths and opening portlight. There is a cedar-lined hanging locker. Entertainment, in this stateroom, is provided by a Samsung flat-screen television, a DVD player, and DirecTV receiver. Directly aft from the guest accommodations passageway is the full-beam master with king-size berth extending forward from the mirrored after bulkhead. There are stainless steel opening portlights behind shoji screens port and starboard. Forward to starboard is a private head with toilet, dual vanity sink, and tub shower. This space is finished with simulated wood flooring, solid surface countertops, vinyl wall coverings, wood cabinetry and built-ins and mirrored overheads. There is a linen locker provided. Port and starboard in the master stateroom are built-in cabinetry and dressers. Aft are cedar-lined hanging lockers. To port is a vanity desk area and bulkhead mounted Samsung flat-screen television. Additionally, the entertainment electronics include a Samsung Blu-ray player DVD player, Marantz AV tuner model NR1602, Apple TV, and DirecTV satellite receiver. On the starboard side, hanging locker is a Trident personal safe.

Main Deck

All the way forward on the main deck is the galley and country kitchen arrangement with polished stone countertops. There are laminate wood floors, vinyl wall coverings, and vinyl overheads. Forward is a 5-panel windshield with fixed windows port and starboard. To starboard is a glass panel door with opening upper window section leading out to the starboard side deck. Forward is a built-in bar area with four fixed pedestal mount swivel stools. Aft is the galley area with the following gear and equipment: • GE Convection Microwave Oven • Miele 4-burner ceramic cooktop • Miele under-counter Convection • Stainless Steel under-mount sink with macerator • KitchenAid stainless steel dishwasher • KitchenAid under counter trash • Sub Zero model #642 side-by-side refrigerator freezer with icemaker Opposite the galley to starboard is a service bar area with Whirlpool bin type icemaker and a U-Line glass front wine refrigerator. Between is a Sub-Zero drawer type beverage refrigerator. Directly aft of the galley is a semi-formal dining area with fixed windows port and starboard. Aft is a dry storage cabinet and open pass-through to the salon. Forward port and starboard is built-in cabinetry. To starboard is the main AC and DC circuit breaker panels. Aft is a set of steps down to the salon. Adjacent to starboard is a curved ladder leading up to the pilothouse station. The main salon area is furnished with an L-shaped settee to port, two leather storage ottomans, and a lounge chair. Port and starboard are large fixed windows, Aft is a double-hinged lockable glass-paneled door and fixed windows leading

out to the aft deck. Entertainment in the salon area is provided by a Samsung flat-screen television on an electric lift. The buffet top to starboard is finished in polished stone. The entertainment cabinet houses the following: • Samsung Blu-ray player • DirecTV • Marantz Model SR6006 AV Surround Sound • Crestron System Switcher • Dacal Blu-ray system multi-disc player

Pilothouse

The pilothouse is up the stairway from the Main Salon. This area is furnished with a fully instrumented helm on centerline with a polished stainless-steel wheel. There is a 6-panel windshield and fixed windows port and starboard. At the helm is a pedestal mount Stidd adjustable helm chair. Aft is an elevated L-shaped built-in settee with solid surface pedestal mount table. To starboard is a day head with toilet, vanity sink, and fixed window. Aft to starboard of centerline is a glass panel lockable hinged door and large fixed window out to the boat deck. The upper deck pilothouse is finished with simulated wood flooring, vinyl wall coverings, vinyl overheads, wood cabinetry, and built-in accents.

Crew Quarters

The crew and lazarette area is accessed by a quick-acting dogged and gasketed hinged lockable door from the cockpit or by a quick-acting dogged and gasketed hatch in the overhead from the aft deck. Forward from the crew accommodations passageway is a dogged and gasketed latching hinged door with viewing port leading to the engine room. Adjacent is the DC circuit breaker panel, fire alarm pull, and battery disconnect selector switches. Opposite to starboard is the main shore power input station.

Port and starboard from the crew passageway are crew cabins. The port cabin features upper and lower berths, a stainless steel framed opening portlight, built-in cabinetry, and cedar-lined hanging locker. Entertainment is provided by a Sharp flat screen bulkhead mounted television. Aft is a private head with toilet, vanity sink, stall shower, and opening portlight.

The starboard cabin features a single lower berth, stainless steel framed opening portlight, built-in cabinetry, and hanging locker. Forward is a private head with toilet, vanity sink, and stall shower. Located in this cabin is a GE laundry center with stacked washer/dryer. The crew area is finished with simulated wood soles, vinyl wall coverings, wood built-in cabinetry and accents, and vinyl overheads. The crew accommodations are fully furnished and air-conditioned throughout.

Deck Arrangement and Equipment

The molded nonskid decks of the foredeck and side decks are protected by low boxed bulwarks on top of which is fitted a polished stainless-steel handrail. In the bow is an integral anchor pulpit

with bow rail. There are Poly-Planar stereo speakers and bolted polished stainless-steel cleats. Centerline in the deck is a hinged hatch providing access to the chain locker and forepeak area. On the raised forward, trunk cabin is a large sun pad and two Lewmar aluminum-framed dark smoked Plexiglas dogged and gasketed hinged hatches into the lower accommodations. Painted nonskid treads lead up the forward housetop to the unprotected bridge top and wings. There is a polished stainless-steel handrail around the perimeter. In the rails port and starboard are boarding gates and tide ride mounts. At the aft end of each side deck are large scupper drains with removable stainless-steel grates. In the port side deck is a single diesel fuel fill. The starboard side deck is a waste pump-out fitting, potable water fill, diesel fill, and clean lube oil fill. In the starboard house side is a built-in fender storage locker. Directly aft of this locker is sliding gasketed door leading to the main accommodations. The side decks are partially protected by the housetop overhang. LED courtesy lights are fitted inside the bulwarks. The side decks extend aft to the teak overlay aft deck. The aft deck is partially protected overhead by the boat deck overhang. There are waist-high boxed bulwarks with varnished teak caps. Forward to starboard of centerline is a varnished teak double hinged glass panel lockable door leading to the main salon. To starboard is a stainless-steel ladder with composite treads leading to a sliding hatch and the boat deck. Port and starboard built into the back of the house are hinged out backing/wing stations. To port is a built-in cabinet with solid surface top, under counter storage, and a U-Line beverage refrigerator. A Sunbrite all-weather television on overhead mount is mounted to the overhead. Centerline in the deck is a quick-acting dogged and gasketed hinged teak overlay hatch leading to the crew accommodations. Port and starboard in the bulwarks are polished stainless-steel fairleads to bolted polished stainless-steel cleats. Directly aft of the cleats are bulwark lockers each housing man overboard throw rings. Centerline aft is a pedestal mount varnished teak table and a built-in bench seating area with cushion and cover. In the overhead are stereo speakers, flush-mounted lights, and a closed-circuit television camera dome. Port and starboard are stainless steel framed clear polycarbonate hinged gates to teak overlay treads, deck level lights, and stainless-steel handrails down to the cockpit.

Cockpit

The teak overlay decks of the cockpit are protected by a waist-high bulwark with natural finish teak covering boards. In the covering boards are rod holders. Below are polished stainless-steel fairleads to bolted polished stainless-steel cleats in the transom corners. There are waterways to scupper drains with removable stainless-steel grates. Port and starboard aft built into the bulwarks are storage lockers and shore power inlets. In the deck are quick acting dogged and gasketed hinged hatches providing access to storage areas and the lazarette. There is a refrigerated deck box and an insulated fish kill box taking ice from the Eskimo icemaker. Centerline on deck is an offset pedestal Blue Water Chairs varnished teak fighting chair with rocket launcher back and full cover. Forward on centerline is a quick-acting dogged and gasketed hinged lockable door providing access to the crew accommodations and engine room. Port and starboard are polished stainless-steel rocket launcher fishing rod storage. To starboard is a wet bar area with stainless steel sink, undercounter storage, and a tuna tube live well system. To port is a top loading live well with glass panel front. Centerline in the transom is a

two-part opening hinged gate providing access to the open teak grate insert integral swim platform. Port and starboard are stainless steel pop-up cleats. Inside the cockpit center door is a hatch housing a telephone-type swim shower. A second telephone-type swim shower is located at the starboard transom walk-down. The molded nonskid decks of the boat deck are protected by a low boxed bulwark and removable polished stainless-steel hoop style handrails. Forward is partially protected by the bridge top overhang. In the overhang are flush mounted lights and a kerf for a fly extension. Off the overhang are a pair of boat deck floodlights. To starboard is a varnished teak glass panel lockable, hinged door leading to the pilothouse. Adjacent to the door is a wet bar area with stainless steel sink, under counter storage, and a U-Line under counter beverage refrigerator. To starboard is a potable water washdown faucet.

Boat Deck

To starboard on the boat deck is a sliding hatch leading to a ladder down to the aft deck. There are removable chocks fitted athwartships and secured with proper fore and aft tie-downs is a fiberglass hard-bottom inflatable. There is also provision for the storage of various water-toys such as a three-person sit down personal watercraft. Forward stowed athwartships is the boat deck davit. There is a category GPIRB mounted adjacent to the davit. Aft to starboard is an upholstered stool and pedestal mount with backing station. The boat deck is cleared by scupper drains with removable stainless-steel grates. Mounted on the bridge sides are Rupp dual spreader anodized aluminum outriggers and fiberglass whip antennas. On the bridge wings are polished stainless-steel grab rails and the port and starboard steaming lights.

Ground Tackle

VANQUISH carries an approximate 170-lb. galvanized steel plow type anchor in a stainless-steel chute and rollers and integrated fiberglass pulpit. The anchor is swivel shackled to 400' of G40 galvanized steel anchor chain. A Muir hydraulic anchor windlass with vertical capstan and gypsy handles the ground tackle. Windlass control is by tethered remote on the foredeck or by remote pushbutton at the helm station.

Davit and Tender

VANQUISH carries athwartships on proper chocks with tie-downs and covers. Small boats are launched and recovered over the port side by a port side forward-mounted athwartships, stowed, Steelhead Marine hydraulic davit from the boat deck. It is a model SM2000C and has a boom extension and full power operation with tethered remote for slewing, luff, and hoist. It is fitted with an Amsteel Dyneema hoist in a single part makeup on a linear winch system. • 2013/2014 16-foot AB inflatables model #NAUTILUS 15 DLX, hull identification #COXTM26015F314 rated for 75-hp, 6-persons, 2,022 lbs powered by a 2014 Evinrude E-Tech 75-hp gasoline outboard engine model #E75DSLAF, serial #05428448

Engine Room

The engine room is accessed by a dogged and gasketed hinged latching door with a viewing port in the centerline aft bulkhead. The engine room is insulated behind high-pressure laminate panels. It is lit with overhead spotlighting and fluorescent fixtures. The decks are coin dot rubber overlaid panels over composite deck plates supported by the painted aluminum framework. The engine room is monitored by a closed-circuit television camera, rate of rise heat detector, and bilge alarm. It is protected by an FM200 automatic/manual fixed fire suppression system. Ventilation is provided by two AC electric ducted axial flow ventilation fans. • Twin Caterpillar C-30 model 3412E freshwater cooled turbocharged marine diesel engines each rated for 1400-hp at 2300 RPM. • Engine hours: Port 3182 hrs; Starboard 3204 hrs (Oct 2019) • ZF Marine reversing gears close-coupled to the main engines with 2.448:1 final drive ratio • 2 x Northern Lights Generators 33-kW; 6,324hrs & 20-kW 1,928hrs (Oct 2019) • Sea Recovery Aqua Whisper 1,200-gallon per day rated reverse osmosis type desalinization plant • Oil-X-Change oil change system for the main engines, generators, and reversing gears • Clean lube oil and dirty lube oil storage tanks • 2 x Welded aluminum fuel oil tanks with sight glasses and crossover lines port and starboard showing a capacity of 1,050 gallons and the center tank at 650 gallons • Tides Dripless Shaft Seals • Nutone Central Vacuum System • SeaStar Hydraulic Steering • 3 x CruisAir raw water-cooled air-conditioning compressors 2 x 16,000 Btu and 1 x 24,000 Btu RPM SOG

FUEL 1000	10 kts	20gph	1200	11.9 kts	31gph	1400	13.0kts	49gph	1600
15.1kts	65gph	1800	17.8kts	86gph	2000	21kts	113gph	2100	22.6kts
135gph	2200	23.9kts	142gph						

Communication, Navigation, and Electronics

VANQUISH is a single station yacht with her main navigation electronics, communication, and monitoring equipment being in the raised pilothouse. In addition, there are backing stations on the aft deck and boat deck. Pilothouse • KVH Tracphone • 2 x ICOM Model IC-M127 VHF Radios • 2 x Furuno model RD30 multifunction navigation displays • Furuno NavNet System with Radar • 2 x ACR Remote Searchlight Controls • 2 x Simrad Model OP40 Navigation System Controllers • 2 x Simrad Radars • Ritchie Powerdamp Magnetic Compass • Kobelt Main Engine Controls • 2 x Flat Screen Multifunction Navigation Displays • 2 x Caterpillar MPD Electronic Engine Displays • Bowthruster Joystick Controls • Muir Remote Windlass Controls • Wesmar Stabilizer System Control • C – Nav Display • Bilge High-Level Alarm Panel • Main Engine Exhaust Over Temperature Alarm Panel • Tank Tender Pneumatic Tank Monitoring System for Fuel and Water Tanks • Simrad Model IS20 Multifunction Analog Digital Wind Instrument • Simrad Model AP20 Autopilot Control • Watermaker system remote operating panel • Generator Remote Start/Stop and Gauge Panels • Black Water Pump Control • Fire Alarm Panel • AC Power Source Status Panels • Xantrex Inverter Display Port and Starboard Aft Deck Wing Stations • Furuno Navnet C-Map NT display • Kobelt Main Engine Controls • Main Engine Start/Stop Control • Bow Thruster Joystick Controls Boat Deck Station • Simrad Model RI35 Rudder Angle Indicator • Flat Panel Multifunction Display • Kobelt Main Engine • Simrad Model S35 Jog Lever Steering • Wesmar Bow Thruster Control • Raymarine Hailer VHF Speaker

Safety and Security Equipment

• 11 x 2-lb. dry chemical portable fire extinguishers • 2 x 1-kg dry chemical portable fire extinguisher • FM 200 Engine Room Fixed Fire Suppression System 80 Lbs. automatic/manual with shutdown relays • Category I GPIRB • 2 x Inflatable Lifejackets • 15 x Adult USCG Approved PFDs • 2 x Child USCG approved personal flotation devices • Infant USCG Approved PFD • 2 x Man Overboard Throw Rings • Zodiac 8-person life raft on hydrostatic release • Fire Blanket • 4 x Automatic/manual submersible bilge pumps with run indication • Bilge Alarm Monitoring Panel • 10 x Emergency egress single-use smoke hoods • Fire Detection System for the engine Room and Crew Area • Crew Cabin Carbon Monoxide Detector • Emergency Light • Flare Kit • First Aid Kit • Trauma Kit • Medical Oxygen • AED Defibrillator • Ditch Bag with First aid kit, wet suits, flare kit and radar reflector • 2 x Remote searchlights • Ship's Horn • Handheld Remote Searchlight • NVTI Infrared Camera • Full set of required navigation anchor lights • Engine room closed-circuit television camera • Aft Deck CCTV • AIS Transponder • 2 x Radar Systems • Excellent Electronics, Navigation and Communications • Excellent Ground Tackle • Main Engine Electronic Monitoring System with Alarms • Main engine exhaust alarm monitoring alarm system • Secondary Means of Escape from all Lower Accommodation Areas

Exclusions

Owner's personal belongings.

Disclaimer

The Company offers the details of this vessel or yacht in good faith but cannot guarantee or warrant the accuracy of this information nor warrant the condition of the vessel. A buyer should instruct his representatives, agents, or his surveyors, to investigate such details as the buyer desires validated. This vessel or yacht is offered subject to prior sale, price change, or withdrawal without notice.

PHOTOS

Salon



Salon



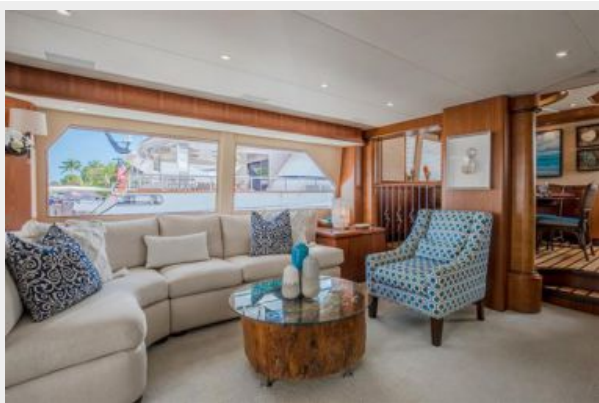
Salon



Salon



Salon



Dining Area



Dining Area



Dining Area



Stairway to Upper Deck



Galley



Galley



Galley



Master Stateroom



Master Stateroom



Master Stateroom



Master Stateroom



Master Stateroom



Master Bath



Master Bath



VIP Stateroom



VIP Bath



VIP Stateroom



VIP Bath



VIP Bath



Twin Stateroom



Pilothouse



Helm



Pilothouse



Pilothouse Seating



Cockpit



Aft Deck



CONTACTS

Andrey Shestakov, leading yacht broker of the sales department of Shestakov Yacht Sales Inc. Shestakov Yacht Sales Inc., the official representative of the Miami/Fort Lauderdale FL headquarters.

Contact details

Email: andrey@shestakovyachtsales.com

Web: shestakovyachtsales.com/en/

Telephones

USA: +1(954)274-4435

Office hours

Monday – Saturday: **9:00 - 21:00** EDT

Sunday: **closed**

Address



Harbour Towne Marina, 850 NE 3rd St,
STE 213, Dania, FL 33004