

J&B — CABO



Builder: CABO

Year Built: 2002

Model: Sport Fisherman

Price: PRICE ON APPLICATION

Location: United States

LOA: 31' 0" (9.45m)

Beam: 12' 5" (3.78m)

Max Draft: 3' 2" (0.97m)

Cruise Speed: 24 Kts. (28 MPH)

Max Speed: 28 Kts. (32 MPH)

Our experienced yacht broker, Andrey Shestakov, will help you choose and buy a yacht that best suits your needs J&B — CABO from our catalogue. Presently, at Shestakov Yacht Sales Inc., we have a wide variety of yachts available on our sale's list. We also work in close contact with all the big yacht manufacturers from all over the world.

If you would like to buy a yacht J&B — CABO or would like help answering any questions concerning purchasing, selling or chartering a yacht, please call +1(954)274-4435

TABLE OF CONTENTS

TABLE OF CONTENTS	2
SPECIFICATIONS	6
Overview	6
Basic Information	6
Dimensions	6
Speed, Capacities and Weight	6
Accommodations	7
Hull and Deck Information	7
Engine Information	7
DETAILED INFORMATION	8
Powerboat Guide Says	8
Electronics & Helm	8
Cabin & Accommodations	8
Cockpit, Deck and Fishing Equipment	9
Exclusions	10
Disclaimer	10
PHOTOS	11
2	11
3	11
4	11
5	11
6	11
7	11
8	12
9	12
10	12
11	12
12	12

13	12
14	13
15	13
16	13
17	13
18	14
19	14
20	14
21	14
22	14
23	14
24	15
25	15
26	15
27	15
28	15
29	15
30	16
31	16
32	16
33	16
34	16
35	16
36	17
37	17
38	17
39	17
40	17
41	17

42	18
43	18
44	18
45	18
46	18
47	18
48	19
49	19
50	19
51	19
52	19
53	19
54	20
55	20
57	20
56	20
58	20
59	20
60	21
61	21
62	21
63	21
64	21
65	21
66	22
67	22
68	22
69	22
70	22

71	22
72	23
73	23
74	23
75	23
76	23
77	23
78	24
79	24
80	24
81	24
82	24
83	24
84	25
85	25
86	25
87	25
88	25
89	25
90	26
CONTACTS	27
Contact details	27
Telephones	27
Office hours	27
Address	27

SPECIFICATIONS

Overview

Original Owner! Offshore Express from a top quality builder. Powered by twin 3126 Caterpillar 385hp direct drive diesel inboards (2480 hrs), Northern Lights diesel powered generator (replaced in 2016, 220 hrs), Marlin Tower with upper control station and buggy top. Lee single spreader outriggers, Helm Heat/Air Conditioning system, 2016 Garmin 5212 color 12" MFD with 72 mile open array radar, Furuno color fish finder with Surface Temp, Autopilot, Ample helm seating, Fish ready cockpit, Clean comfortable and surprisingly large cabin. Galley with new refrigerator (new in '18), Flat panel TV, stereo, sleeping for 4. Enclosed head and shower. 24 kt cruise, 29 kt top speed. New 4 sided helm enclosure too.

Basic Information

Category: Sport Fisherman

Sub Category: Express

Model Year: 2002

Year Built: 2002

Country: United States

Dimensions

LOA: 31' 0" (9.45m)

LOD: 31' 2" (9.50m)

Beam: 12' 5" (3.78m)

Max Draft: 3' 2" (0.97m)

Speed, Capacities and Weight

Cruise Speed: 24 Kts. (28 MPH)

Max Speed: 28 Kts. (32 MPH)

Displacement: 15000 Pounds

Water Capacity: 50 Gallons

Holding Tank: 20 Gallons

Fuel Capacity: 370 Gallons

Accommodations

Total Cabins: 1

Total Berths: 2

Total Heads: 1

Hull and Deck Information

Hull Material: Fiberglass

Hull Configuration: Deep Vee

Hull Color: White

Engine Information

Engines: 2

Manufacturer: Caterpillar

Model: 3126

Engine Type: Inboard

Fuel Type: Diesel

DETAILED INFORMATION

Powerboat Guide Says

This long range open fisherman is proof that beauty can be more than skin deep. Upscale cabin is spacious for a 31 footer with berths for four. Full galley, teak & holly sole, enclosed head with shower. Cockpit amenities include bait prep center, transom fishbox/livewell, in deck fishbox, fresh and raw water washdown, transom door with gate. Helmdeck raises hydraulically for engine access. Well known for excellent electrical wiring and attention to detail.

Electronics & Helm

- Garmin 5212 color MFD with CPS Chartplotter RECENT UPGRADE
- Garmin open array 72 mile radar antenna, with Radar/Chartplotter overlay RECENT UPGRADE
- Guest remote spotlight
- Ritchie magnetic compass
- Simrad AP22 autopilot
- Furuno FVC-582L color fishfinder with Sea Surface temp
- Horizon Spectrum VHF Radio with DSC
- Horizon RAM Mic (connection at tower helm station)
- B&G speed/temp/depth quad gauge (one at each helm station)
- Hynautic shift and throttle controls (one at each helm station)
- Hynautic steering (one at each helm stations)
- Cabo: Vessel Alarm System
- Hydraulic trim tabs
- Overhead hardtop lighting
- Anchor windlass with helm and foredeck controls
- Electric windshield vent
- Windshield Wipers
- Polycarbonate helm enclosure (front and sides) RECENT UPGRADE
- Strataglass rear helm enclosure RECENT UPGRADE

Cabin & Accommodations

- Northern Lights diesel powered generator. 8.3kw (220 hrs) RECENT UPGRADE
- Lockable cabin door
- Reverse cycle Heating/Air Conditioning system just for the lower cabin (Heating/Air Conditioning with digital controller)
- Beautiful teak & holly cabin floor
- Surprisingly room cabin with excellent headroom

- Stbd side sofa, converts into an upper/lower bunk sleeper
- Sony Marine Stereo with Helm and Cabin speakers
- Element 17" Flat Panel HDTV RECENT UPGRADE
- Forward dinette with teak table located in the V-berth
- V-Berth converts into a full 2 person sleeper
- Horizontal rod storage lockers with teak doors, located along both sides of V-Berth
- Overhead deck hatch
- Port side galley with Corian counters
- Kenyon single burner electric stove
- Multi function Microwave Oven
- Deep Stainless Steel sink with faucet
- Dometic under counter Refrigerator/Freezer ac/dc (new 2018) RECENT UPGRADE
- Lower galley storage behind mirrored sliding doors
- Upper galley storage cabinets behind teak doors
- 110 volt convenience outlet
- Enclosed head with sink (pullout shower head)
- Electric flushing toilet with holding tank, overboard discharge or deck pumpout
- Holding Tank monitor
- Shower curtain
- Vertical rod storage for 3 rods

Cockpit, Deck and Fishing Equipment

- Stbd Side transom door and gate
- Deep/Safe cockpit depth
- Transom Fishbox/ also plumbed as a livewell
- In-Deck fish box
- Pedestal mounted 4 rod launcher, with Gimbal for fighting fish
- Custom slant back cockpit weather cover
- 30 amp shore power connection
- Fresh and Raw water washdown
- Port side Bait Prep center
- Stbd side built-in cooler with stainless drain
- Lee single spreader outriggers
- Aluminum tower frame with rear legs
- Marlin tower with seat and backrest
- Buggy top
- Complete tower control station
- Under gunwhale storage for gaff and mop/brushes
- Side deck access along both sides of house with handrail along hardtop
- Aluminum Bow railing
- Powdercoated aluminum windshield frame
- Foredeck hatch

- Built-in anchor pulpit, QCR style plow anchor
- Lewmar Anchor Windlass with foot pedal and helm controls
- Day engine access hatch in helm deck floor
- Entire helm deck raises Hydraulically for complete engine access
- Engine room lighting
- Built in Battery charger

Exclusions

Owner's personal belongings.

Disclaimer

The Company offers the details of this vessel or yacht in good faith but cannot guarantee or warrant the accuracy of this information nor warrant the condition of the vessel. A buyer should instruct his representatives, agents, or his surveyors, to investigate such details as the buyer desires validated. This vessel or yacht is offered subject to prior sale, price change, or withdrawal without notice.

PHOTOS

2



3



4



5



6



7



8



9



10



11



12



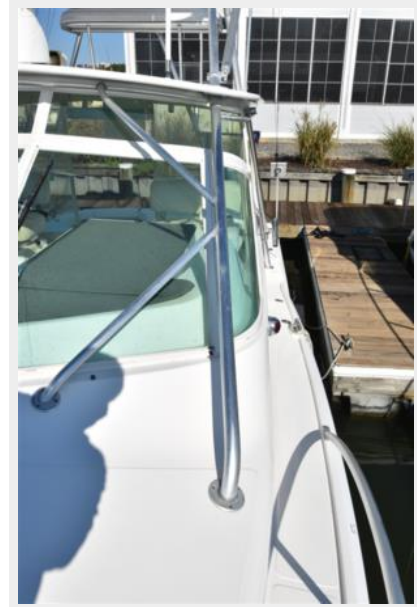
13



14



15



16



17



18



19



20



21



22



23



24



25



26



27



28



29



30



31



32



33



34



35



36



37



38



39



40



41



42



43



44



45



46



47



48



49



50



51



52



53



54



55



56



57



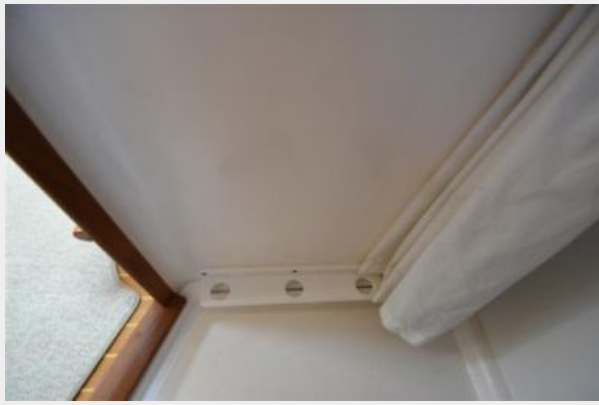
58



59



60



61



62



63



64



65



66



67



68



69



70



71



72



73



74



75



76



77



78



79



80



81



82



83



84



85



86



87



88



89



90



CONTACTS

Andrey Shestakov, leading yacht broker of the sales department of Shestakov Yacht Sales Inc. Shestakov Yacht Sales Inc., the official representative of the Miami/Fort Lauderdale FL headquarters.

Contact details

Email: andrey@shestakovyachtsales.com

Web: shestakovyachtsales.com/en/

Telephones

USA: +1(954)274-4435

Office hours

Monday – Saturday: **9:00 - 21:00** EDT

Sunday: **closed**

Address



Harbour Towne Marina, 850 NE 3rd St,
STE 213, Dania, FL 33004