

STALKER — OCEAN YACHTS



Builder: [Ocean Yachts](#)

Year Built: 1995

Model: Sport Fisherman

Price: PRICE ON APPLICATION

Location: United States

LOA: 53' 0" (16.15m)

Beam: 16' 4" (4.98m)

Max Draft: 4' 0" (1.22m)

Cruise Speed: 25 Kts. (29 MPH)

Max Speed: 33 Kts. (38 MPH)

Our experienced yacht broker, Andrey Shestakov, will help you choose and buy a yacht that best suits your needs **Stalker — Ocean Yachts** from our catalogue. Presently, at Shestakov Yacht Sales Inc., we have a wide variety of yachts available on our sale's list. We also work in close contact with all the big yacht manufacturers from all over the world.

If you would like to buy a yacht **Stalker — Ocean Yachts** or would like help answering any questions concerning purchasing, selling or chartering a yacht, please call **+1(954)274-4435**

TABLE OF CONTENTS

TABLE OF CONTENTS	2
SPECIFICATIONS	5
Overview	5
Basic Information	5
Dimensions	5
Speed, Capacities and Weight	5
Accommodations	5
Hull and Deck Information	6
Engine Information	6
DETAILED INFORMATION	7
Upgrades	7
Cockpit	7
Electrical	7
Accommodations	8
Exclusions	8
Disclaimer	8
PHOTOS	9
2	9
3	9
4	9
5	9
6	10
7	10
9	10
8	10
10	11
11	11
12	11

13	11
14	11
15	11
16	12
17	12
18	12
19	12
21	12
20	12
22	13
23	13
25	13
24	13
26	14
27	14
28	14
29	14
30	15
32	15
33	15
31	15
34	16
35	16
36	16
37	16
39	17
38	17
41	17
40	17

42	18
43	18
44	18
45	18
46	18
47	18
48	19
49	19
CONTACTS	20
Contact details	20
Telephones	20
Office hours	20
Address	20

SPECIFICATIONS

Overview

Stalker is a very nice example of Ocean Yachts popular 53 SS. She has the preferred Master forward - 3 stateroom layout. Powered by 820 HP MAN's she is rigged and ready for her next adventure. Check out the list of UPGRADES. She is clean and well maintained with 3 years of perfect oil samples.

Basic Information

Category: Sport Fisherman

Sub Category: Convertible

Model Year: 1995

Year Built: 1995

Country: United States

Dimensions

LOA: 53' 0" (16.15m)

Beam: 16' 4" (4.98m)

Max Draft: 4' 0" (1.22m)

Speed, Capacities and Weight

Cruise Speed: 25 Kts. (29 MPH)

Max Speed: 33 Kts. (38 MPH)

Displacement: 52000 Pounds

Water Capacity: 200 Gallons

Holding Tank: 20 Gallons

Fuel Capacity: 860 Gallons

Accommodations

Total Cabins: 3

Total Heads: 2

Hull and Deck Information

Hull Material: Fiberglass

Hull Configuration: Deep Vee

Engine Information

Engines: 2

Manufacturer: MAN

Model: D2840LF401

Engine Type: Inboard

Fuel Type: Diesel

DETAILED INFORMATION

Upgrades

- Complete New Paint Topside with Alexseal
- Garmin Eletronics 2X 7612
- Garmin Digital Depth
- Simrad AP28 Auto Pilot
- Icom IC-M506 Vhf Radios x 2
- New EZ2CY Front Curtains
- New Strata Glass Side Curtains
- New Coaming Pads in Cockpit
- 50 inch flatscreen in salon
- Tracvision Sat TV

Cockpit

- TEAK COCKPIT
- REFRIGERATED FISH BOX
- TACKLE DRAWERS
- FIGHTING CHAIR
- COCKPIT CONTROLS
- TRANSOM DOOR
- RUPP TRIPLE SPREADER OUTRIGGERS
- FRESHWATER WASHDOWN
- COCKPIT LIGHTING
- TEAK COVERING BOARDS
- BAIT FREEZER
- 6 ROD HOLDERS
- NEW COCKPIT COAMING PADS
- SALTWATER WASH DOWN

Electrical

- 110 V, 220 V AC electrical system
- 12 V DC electrical system
- (2) Battery banks
- Electrical bonding system
- 12.5kW Onan generator
- Battery Charger
- Battery Condition Gauge

- Battery Parallel Switch
- 220 V, 50 amp EB2023 dockside electrical cable
- AC/DC lighting system
- Master electrical panel with circuit breakers
- Voltae meter
- Cable and telephone inlet

Accommodations

THE VERY TASTEFUL INTERIOR FEATURES TEAK WOOD APPOINTMENTS, BERBER CARPETING, CORIAN COUNTERTOPS, AND LUXURIOUS FURNISHINGS. THE INTERIOR LAYOUT FEATURES THE EXPANDED ANGLED MASTER FORWARD WITH PRIVATE HEAD, GUEST STATEROOM TO PORT WITH A QUEEN SIZE BERTH.

- CEDAR LINED CLOSETS
- TV IN GUEST STATEROOM
- HANGING LOCKERS
- TV IN MASTER STATEROOM
- AMPLE STORAGE CABINETS
- MASTER VANITY AREA

Exclusions

Owner's personal belongings.

Disclaimer

The Company offers the details of this vessel or yacht in good faith but cannot guarantee or warrant the accuracy of this information nor warrant the condition of the vessel. A buyer should instruct his representatives, agents, or his surveyors, to investigate such details as the buyer desires validated. This vessel or yacht is offered subject to prior sale, price change, or withdrawal without notice.

PHOTOS

2



3



4



5



6



7



9



8



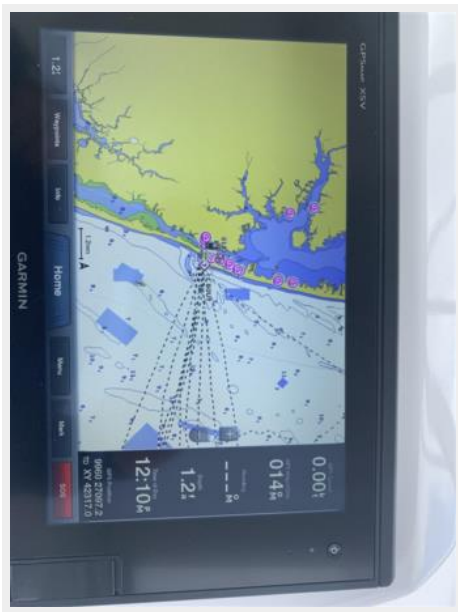
10



11



12



13



14



15



16



17



18



19



20



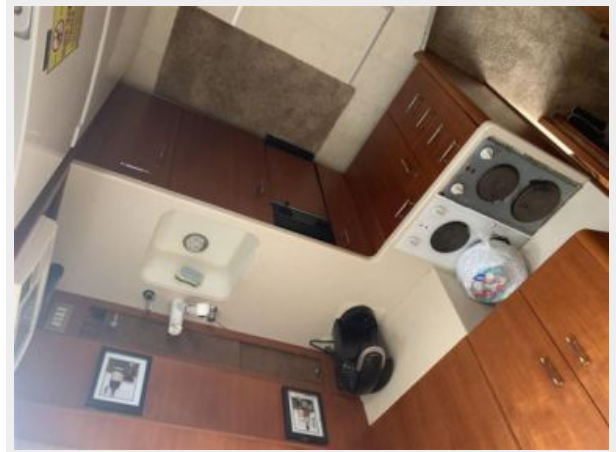
21



22



23



24



25



26



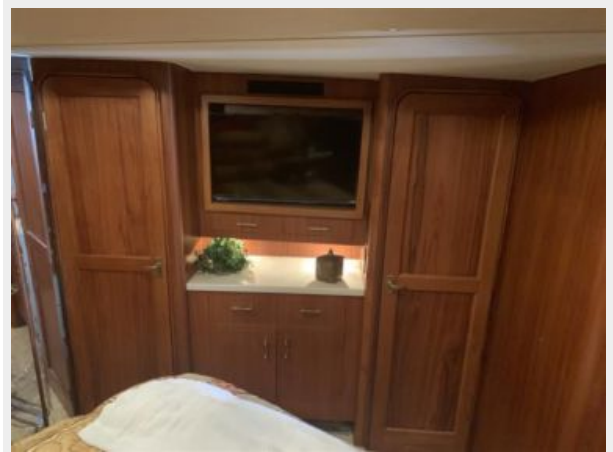
27



28



29



30



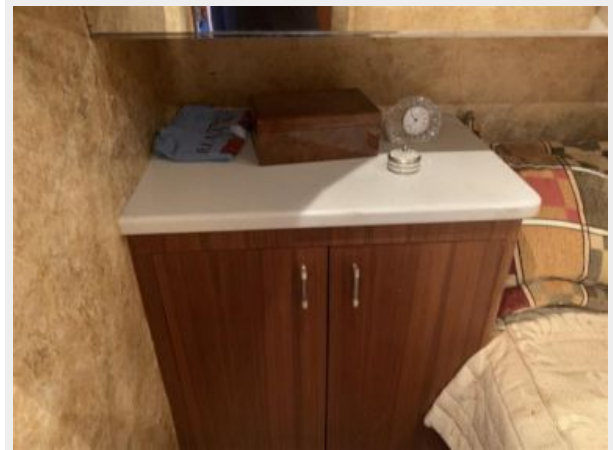
32



33



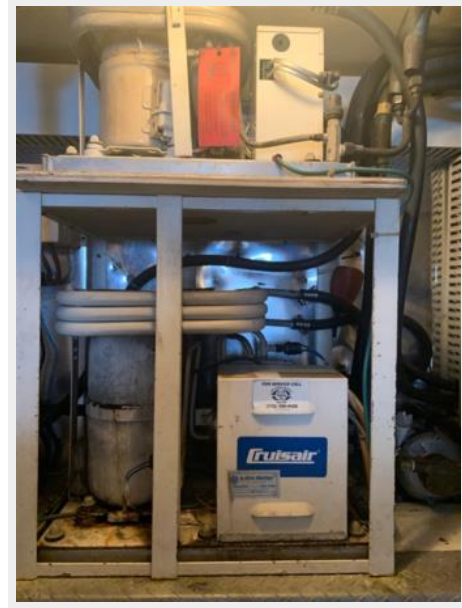
31



34



35



36



37



38



39



40



41



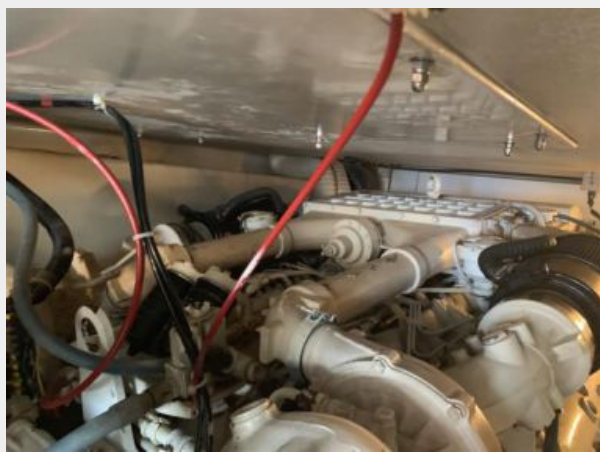
42



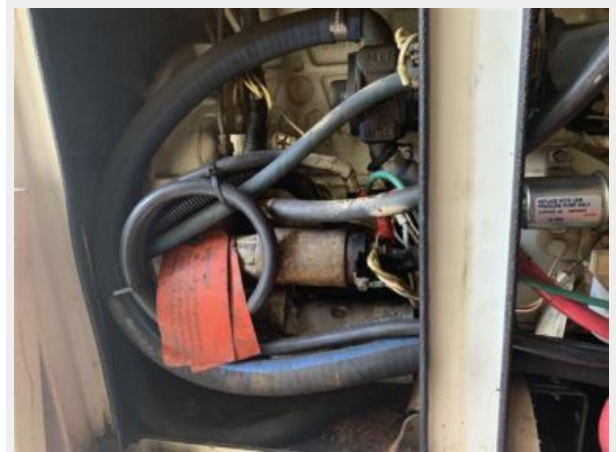
43



44



45



46



47



48



49



CONTACTS

Andrey Shestakov, leading yacht broker of the sales department of Shestakov Yacht Sales Inc. Shestakov Yacht Sales Inc., the official representative of the Miami/Fort Lauderdale FL headquarters.

Contact details

Email: andrey@shestakovyachtsales.com

Web: shestakovyachtsales.com/en/

Telephones

USA: +1(954)274-4435

Office hours

Monday – Saturday: **9:00 - 21:00** EDT

Sunday: **closed**

Address



Harbour Towne Marina, 850 NE 3rd St,
STE 213, Dania, FL 33004