

## ON CALL 2 — ISLAND PACKET YACHTS



**Builder:** ISLAND PACKET YACHTS

**Year Built:** 2004

**Model:** Cruising Sailboat

**Price:** PRICE ON APPLICATION

**Location:** United States

**LOA:** 37' 0" (11.28m)

**Beam:** 13' 1" (3.99m)

**Max Draft:** 4' 3" (1.30m)

Our experienced yacht broker, Andrey Shestakov, will help you choose and buy a yacht that best suits your needs **On Call 2 — ISLAND PACKET YACHTS** from our catalogue. Presently, at Shestakov Yacht Sales Inc., we have a wide variety of yachts available on our sale's list. We also work in close contact with all the big yacht manufacturers from all over the world.

If you would like to buy a yacht **On Call 2 — ISLAND PACKET YACHTS** or would like help answering any questions concerning purchasing, selling or chartering a yacht, please call **+1(954)274-4435**

---

# TABLE OF CONTENTS

---

TABLE OF CONTENTS	2
SPECIFICATIONS	5
Overview	5
Basic Information	5
Dimensions	5
Speed, Capacities and Weight	5
Accommodations	6
Hull and Deck Information	6
Engine Information	6
DETAILED INFORMATION	7
Overview	7
Exclusions	11
Disclaimer	11
PHOTOS	12
photo 02	12
photo 03	12
photo 04	12
photo 05	12
photo 06	13
photo 07	13
photo 08	13
photo 09	13
photo 10	13
photo 11	13
photo 12	14
photo 13	14
photo 14	14
photo 15	14

---

photo 16	14
photo 17	14
photo 18	15
photo 19	15
photo 20	15
photo 21	15
photo 23	15
photo 22	15
photo 24	16
photo 25	16
photo 26	16
photo 27	16
photo 28	16
photo 29	16
photo 30	17
photo 31	17
photo 32	17
photo 33	17
photo 34	17
photo 35	17
photo 36	18
photo 37	18
photo 38	18
photo 39	18
Photo 40	18
photo 41	18
photo 43	19
photo 42	19
photo 44	19

---

---

photo 45	19
photo 47	20
photo 46	20
photo 48	20
photo 49	20
photo 50	20
photo 51	20
photo 52	21
photo 53	21
photo 54	21
photo 55	21
photo 57	21
photo 56	21
photo 58	22
photo 60	22
photo 61	22
photo 62	22
photo 63	23
photo 64	23
photo 65	23
CONTACTS	24
Contact details	24
Telephones	24
Office hours	24
Address	24

---

# SPECIFICATIONS

---

## Overview

---

### Salespersons Remarks:

One of Island Packet's best designs, the 370 is the result of 25 years of design evolution. It combines innovative and proven design philosophies with all the exemplary construction qualities that have made Island Packet yachts respected and admired around the world. Along with the superior seakeeping, safety, unrivaled comfort, and ease of use that have become foundations of the Island Packet concept, the 370 delivers a host of features in a beautiful design that is the benchmarks for the cruising sailor.

The Island Packet 370 is an excellent blue water cruiser with a large comfortable cockpit, wide side decks, built in stern swim step and platform, bow sprit, and broad anchor platform, all designed to provide maximum confidence and safety on deck. On Call 2 is exceedingly well-equipped and maintained and can satisfy a broad range of sailor's demands.

## Basic Information

---

**Category:** Cruising Sailboat

**Model Year:** 2004

**Year Built:** 2004

**Country:** United States

## Dimensions

---

**LOA:** 37' 0" (11.28m)

**LWL:** 31' 0" (9.45m)

**Beam:** 13' 1" (3.99m)

**Max Draft:** 4' 3" (1.30m)

**Clearance:** 54' 3" (16.54m)

## Speed, Capacities and Weight

---

**Displacement:** 21000 Pounds

**Water Capacity:** 170 Gallons

**Holding Tank:** 60 Gallons

**Fuel Capacity:** 75 Gallons

---

## Accommodations

---

**Total Cabins:** 2

---

## Hull and Deck Information

---

**Hull Material:** Fiberglass

---

## Engine Information

---

**Engines:** 1

**Manufacturer:** Yanmar

**Model:** 4JH3BE

**Engine Type:** Inboard

**Fuel Type:** Diesel

---

# DETAILED INFORMATION

---

## Overview

---

### Vessel Overview

On Call 2 came equipped with the Accommodations Plus package from Island Packet that includes Corian countertops, beveled flooring, varnished interior, Ocean Aiar hatch screens and shades, hot and cold cockpit shower and upgraded interior lighting. She also has the upgraded windlass from the factory, Blue fabric cushions, weather resistant cockpit cushions, Stainless Steel wheel and a beautiful custom teak cockpit table.

### Vessel Walkthrough

The interior of the Island Packet 370 is modern, spacious and light, all the while incorporating the unbelievable storage for which Island Packet Yachts are known.

Starting forward is the private owner's cabin featuring an island berth with huge storage beneath, hanging locker and cabinets with shelves. There is private access to the head, which is next aft to port. There is a sink, marine toilet with fiberglass holding tank, vanity and separate stall shower. To starboard of the head is another hanging locker.

The main salon is next aft and features facing settees port and starboard with the port settee converting to a double bunk. The large bulkhead mounted table is Island Packet's signature and really opens this area and gives you a very spacious feeling.

To starboard of the companionway is the "U" shaped galley with wide Corian countertops and integral sea rails, Force 10 LPG stove with oven and broiler, large refrigerated ice box, dish and cutlery storage areas and a flip-up counter extension.

To port of the companionway is the aft cabin and navigation area. One of the more notable

features of the 370 is the versatility of the aft cabin. The nav area can cleverly be used as a vanity or desk, and the entire area can be closed off for more privacy by means of a hinged paneled in the forward bulkhead.

All in all, the functional and elegant interior of On Call 2 can't be beat.

### **"Accommodations Plus" Package**

- Blue Fabric Upholstery in Main Salon
- 11 Opening Stainless-Steel Ports with Screens
- 6 Deck Hatches
- 3 Dorade ventilators with Screens
- Screens for All Ports and Hatches
- Courtesy Lights Upon Entering
- Satin Varnished Interior
- Recessed Lighting with Dimmer
- Chrome plated Brass Cabin Side Lights
- **Factory Add-on's**
- 16K Reverse Cycle Heat and Air
- Custom Companionway Doors with Screen

### **Galley**

- The "U" shaped galley provides plenty of counter space for food prep and good storage. The non skid flooring offers additional safety while cooking and the opening overhead hatch and opening port provide good ventilation.
- Double Bowl Stainless Steel Sink
- Microwave Oven
- Upgraded Frigoboat Keel Cooled Single Access Refrigerator with Freezer
- Corian Countertops
- Gimballed Force 10 Three Burner Stove with Oven
- Designated Pull Out Trash Bin

### **Navigation & Electric Equipment**



- Garmin Knot, Depth, Wind Speed/ Direction, over Companionway
- ICOM VHF at Nav Station with Ram Mic at Helm
  
- Ritchie Compass with Custom Island Packet Nav Grid
- Garmin GPSmap 7612 Chartplotter/ GPS Display at Nav Station
- AIS Receiver and Transmitter
- Multi-function Samsung Tablet at Nav Station
- Bad Boy Unleashed HP, Wireless Hot Spot
- Garmin Radar, Phantom 18/24
- Miccus, Bluetooth Range Extender
- Fusion Radio MS-AV755, with Interior and Cockpit Speakers
- Xantrex Freedom X, 2KW Pure Sinewave Power Inverter
- Sirius Radio & Weather Receiver

## Electrical System

Island Packet uses only U.L. approved marine, pretinned, 600V, color coded wiring throughout. There are numerous 12V interior lamps including overhead, recessed and cabin side lamps with switches. There are courtesy lamps with rocker switches at companionway, dome lights in cockpit lockers, forepeak, ice box, engine room and bilge.

- 5 Lifeline AGM Group 27 House Batteries 2018
- 1 Lifeline AGM Group 27 Engine Start Battery 2018
- Delux Electric Panels w/ Battery Switches
- Circuit Breakers for DC and AC Systems and Gauges
- 30 AMP Dockside System with 50" Cable
- Extra 30 AMP Dockside Connection w/ Breaker for Dockside Heat and Air
- Charles 5000 Series 40 AMP Charger plus secondary Charles 40 AMP Charger
- Electrical DC Bonding System for Rig and Underwater Metals

## Sails & Rigging

The high aspect sail plan coupled with the convenience of all major control lines led aft to the cockpit delivers spirited, safe and easy cruising for solo sailors or family outings. Roller furling on the main, jib and staysail make her easily handled in all conditions and the patented Hoyt Boom

maximizes performance of the staysail.

- Roller Furling Main, Jib and Staysail
- Boom Vang
- Spare Main Halyard
- Color Coded Running Rigging
- Keel Stepped Mast
- Primary Winches- Lewmar Ocean Series 44 CST 2 Speed
- Secondary Winches – Lewmar #8
- Cabintop Winches - Lewmar Ocean Series 30 CST
- Mast Winches (3) Lewmar #8
- Main Sheet Traveler w/ 4:1 Control System Led To Cockpit
- Mid Boom Sheeting
- Twin Backstays
- **Staysail Package:** Harken roller furling system; Hoyt Boom, Lewmar winches
- **Cruising Spinnaker Package:** Asymmetrical Spinnaker with Dousing Sock

## Deck Equipment

Island Packet has always put safety first and I think it is most apparent in the deck design. A few things like recessed foredecks, uncluttered side decks, full length cabin top handrails, Sea Safe anchor rollers on the bow, harness pad eyes and broad step transom keep boating safe and fun.

- Electric Windlass
- 35#CQR with 200 Ft Chain
- Secondary Anchor with Chain and Rode
- Stainless Steel Dorades with Guards
- Dock Lines, Fenders and Coast Guard Gear
- Dodger, Bimini and Connecting Panel with Aft and Side Grab Rails
- Stainless Steel Wheel
- Stern Rail Seats
- Cockpit Cushions
- Hot and Cold Cockpit Shower

## Engine & Mechanical Equipment

- 56 HP Yanmar 4JH3BE Diesel
- Three Blade Prop
- Single Lever Engine Control
- Manual Bilge Pump
- Ultimate Magnetic Reed Float Switch Electric Bilge Pump
- Whitlock "Premier XL" Rack and Pinion Steering System
- Racor Fuel Filter
- 6 Gallon Hot Water Heater
- Electric Shower and Ice Box Drain Pumps
- 16K BTU Reverse Cycle Heat and Air
- Seagull Water Filter on Cold Water Supply for Galley and Head
- Personal Effects, Tools, Mercury Outboard Motor and Bicycle and Not Included

## Exclusions

---

Owner's personal belongings.

## Disclaimer

---

The Company offers the details of this vessel or yacht in good faith but cannot guarantee or warrant the accuracy of this information nor warrant the condition of the vessel. A buyer should instruct his representatives, agents, or his surveyors, to investigate such details as the buyer desires validated. This vessel or yacht is offered subject to prior sale, price change, or withdrawal without notice.

# PHOTOS

photo 02



photo 03



photo 04



photo 05



photo 06



photo 07



photo 08



photo 09



photo 10



photo 11



photo 12

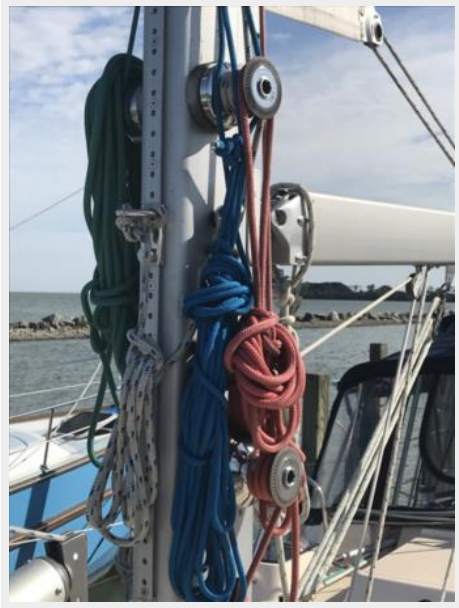


photo 13



photo 14



photo 15



photo 16



photo 17



photo 18



photo 19



photo 20



photo 21



photo 22



photo 23



photo 24



photo 25



photo 26



photo 27



photo 28



photo 29





photo 30



photo 31



photo 32



photo 33

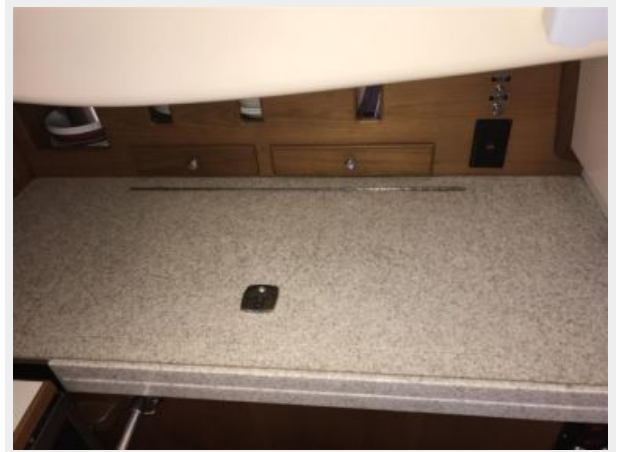


photo 34



photo 35



photo 36



photo 37



photo 38



photo 39



Photo 40

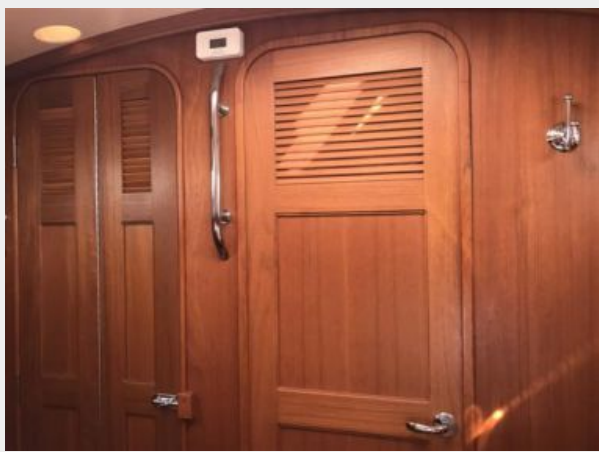


photo 41



photo 42



photo 43



photo 44



photo 45



photo 46



photo 47



photo 48



photo 49



photo 50



photo 51



photo 52



photo 53



photo 54



photo 55



photo 56



photo 57

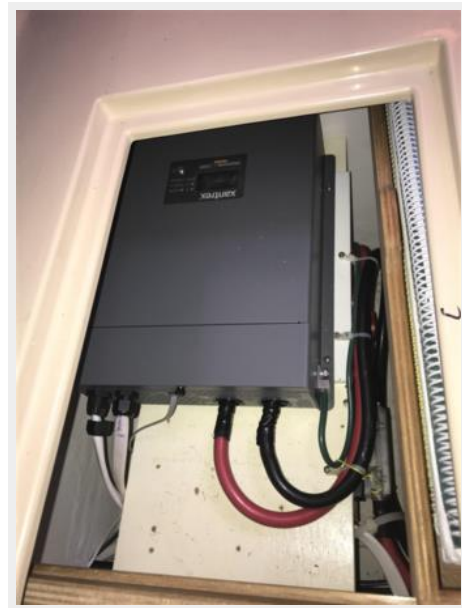


photo 58



photo 60



photo 61



photo 62



photo 63



photo 64



photo 65



# CONTACTS

---

Andrey Shestakov, leading yacht broker of the sales department of Shestakov Yacht Sales Inc. Shestakov Yacht Sales Inc., the official representative of the Miami/Fort Lauderdale FL headquarters.

## Contact details

---

Email: [andrey@shestakovyachtsales.com](mailto:andrey@shestakovyachtsales.com)

Web: [shestakovyachtsales.com/en/](http://shestakovyachtsales.com/en/)

## Telephones

---

USA: +1(954)274-4435

## Office hours

---

Monday – Saturday: **9:00 - 21:00** EDT

Sunday: **closed**

## Address

---



Harbour Towne Marina, 850 NE 3rd St,  
STE 213, Dania, FL 33004