

# **SAGE —** **ADMIRAL - THE ITALIAN SEA GROUP**



**Builder:** Admiral - The Italian Sea Group

**Year Built:** 2017

**Model:** Motor Yacht

**Price:** PRICE ON APPLICATION

**Location:** Italy

**LOA:** 130' 3" (39.70m)

**Beam:** 26' 3" (8.00m)

**Max Draft:** 6' 3" (1.90m)

**Cruise Speed:** 12 Kts. (14 MPH)

**Max Speed:** 19 Kts. (22 MPH)

Our experienced yacht broker, Andrey Shestakov, will help you choose and buy a yacht that best suits your needs **SAGE — Admiral - The Italian Sea Group** from our catalogue. Presently, at Shestakov Yacht Sales Inc., we have a wide variety of yachts available on our sale's list. We also work in close contact with all the big yacht manufacturers from all over the world.

If you would like to buy a yacht **SAGE — Admiral - The Italian Sea Group** or would like help answering any questions concerning purchasing, selling or chartering a yacht, please call **+1(954)274-4435**

# TABLE OF CONTENTS

TABLE OF CONTENTS	2
SPECIFICATIONS	6
Overview	6
Basic Information	6
Dimensions	6
Speed, Capacities and Weight	6
Accommodations	7
Hull and Deck Information	7
Engine Information	7
DETAILED INFORMATION	8
Overview	8
Vessel Walkthrough	8
Accommodations	9
Main Machinery	9
Auxiliary Equipment	10
Entertainment and A/V Equipment	10
Communication and Navigation Equipment	10
Galley and Laundry Equipment	11
Crew Accommodations	12
Security, Safety and Firefighting Equipment	13
Tender	13
Exclusions	13
Disclaimer	13
PHOTOS	14
Main Salon	14
Main Salon	14
Main Salon	14
Main Salon	14

Dining Area	14
Dining Area	14
Day Head	15
Master Stateroom	15
Master Stateroom	15
Master Stateroom	15
Master En Suite	15
Master En Suite	15
Second Master Stateroom	16
Second Master Stateroom	16
Second Master Stateroom En Suite	16
VIP Stateroom	16
Twin Stateroom	16
Twin Stateroom	16
Aft Deck	17
Aft Deck	17
Sundeck Lounge	17
Sundeck Lounge	17
Sundeck Lounge	17
Sundeck Aft	17
Sundeck Aft	18
Sundeck Dining Area	18
Sundeck Dining Area	18
Sundeck	18
Sundeck	18
Sundeck Entertainment Area	18
Stairs to Sundeck	19
Bridge	19
Bridge	19

Galley	19
Galley	19
Pantry	19
Crew Mess	20
Captain's Quarter	20
Laundry	20
Crew Hallway	20
Foredeck Seating Area	20
Foredeck	20
Foredeck	21
Beach Club	21
Tender Garage	21
Williams 505 Diesel Jet Tender	21
Engine Control Room	21
Engine Room	21
Engine Room	22
Port Running	22
Bow Running	22
Bow Running	22
Port Running	22
Aerial	22
Aerial Running	23
Port Profile	23
SAGE 40m Admiral General Arrangement	23
M/Y SAGE Consumption Table	23
CONTACTS	24
Contact details	24
Telephones	24
Office hours	24

Address

24

---

# SPECIFICATIONS

## Overview

The 40m Admiral Yacht SAGE was delivered in July 2017 in Carrara, Italy. She is the best of the 40m raised pilot house Impero’s built to date. The minimalistic interior design by Gian Marco Campanino and exterior features by Admiral were carefully curated by the owner and GMC design, with a unique Ethereal Blue hull color inspired by the summertime Italian Riviera skies. After 2 years of solely private use, and found in turn-key condition, SAGE is ready to be delivered to her new owner.

## Basic Information

Category: Motor Yacht	Model Year: 2017
Year Built: 2017	Country: Italy

## Dimensions

LOA: 130' 3" (39.70m)	LWL: 123' 9" (37.70m)
Beam: 26' 3" (8.00m)	Max Draft: 6' 3" (1.90m)

## Speed, Capacities and Weight

Cruise Speed: 12 Kts. (14 MPH)	Cruise Speed Range: 2074
Max Speed: 19 Kts. (22 MPH)	Gross Tonnage: 299 Pounds
Water Capacity: 2113.376416 Gallons	Holding Tank: 1320.86026 Gallons
Fuel Capacity: 8717.677716 Gallons	

## Accommodations

Total Cabins: 5	Sleeps: 12
Total Heads: 7	Crew Cabin: 4
Crew Berths: 7	Crew Sleeps: 7
Crew Heads: 4	

## Hull and Deck Information

Hull Material: Aluminum	Hull Configuration: Monohull
Hull Color: Ethereal Blue	Hull Designer: Admiral
Interior Designer: Gian Marco Campanino	

## Engine Information

Engines: 2	Manufacturer: CAT
Model: C32	Engine Type: Inboard
Fuel Type: Diesel	

---

# DETAILED INFORMATION

---

## Overview

---

\*Not available for sale to US residents while in US waters.

The 40m Admiral Yacht SAGE was delivered in July 2017 in Carrara, Italy. She is the best of the 40m raised pilothouse Impero's built to date. The minimalistic interior design by Gian Marco Campanino and exterior features by Admiral were carefully curated by the owner and GMC design, with a unique Ethereal Blue hull color inspired by the summertime Italian Riviera skies. After 2 years of solely private use, and found in turn-key condition, SAGE is ready to be delivered to her new owner.

## Vessel Walkthrough

---

Step aboard the unique Admiral Yacht SAGE either via beach club or starboard side boarding staircase leading up to the large aft deck lounge area with comfortable seating options. As you move forward, double automatic electric doors lead you to the minimalistic main salon with one port side sumptuous L-shaped Minotti sofa and one straight sumptuous Minotti sofa on starboard side accompanied by a large lounge chair. Dividing the main salon from the formal dining area is a console for tableware with a rise and fall television and starboard side cupboard for glassware. On either side of the formal dining table with seating for up to 10 guests are sliding glass doors allowing unobstructed views and a cool sea breeze while you dine, accompanied by a port side day head.

A starboard side hallway leads you directly to the full-beam Owner's Suite which is minimally yet tastefully decorated and accompanied by a full-beam master en-suite head with rain shower and upgraded Carrara marble. On either side of the master stateroom, vast windows allow ample natural light as the ebony woods complement the light soft goods. On port side, you will find a large chaise lounge, while on starboard side there are a large desk and spacious storage dresser.

Head aft through the hallway which leads you to access the carpeted staircase down to the four below deck staterooms. Below deck aft you will find the full-beam 2nd Owner's Stateroom with desk area, storage and wood sliding doors leading to a large ensuite head with upgraded Carrara marble. On both port and starboard are convertible twin staterooms with ensuite heads, and each with a pullman bed. Forward, you will find the VIP stateroom with large storage closet, desk, and ensuite head, as well as an additional pullman bed.



Heading back up the under-lit stairs, turn to port side to enter through an electric sliding door to the service pantry equipped with wine cooler, icemaker, dishwasher and sink before reaching the large fully equipped galley. A staircase leads down to the crew mess which has accommodations for 7 crew in 4 cabins including a private double berth captain's cabin, as well as the laundry room with double washers and dryers.

Back up the staircase, one can access the bridge which is equipped with fully up to date LCD monitors and navigational equipment. The bridge features a Besenzoni captain's chair surrounded by additional seating. Up a small set of stairs there is access to the beautiful, spacious sun deck which boasts a large alfresco dining area for up to 10 guests as well as several lounging areas. Forward from the alfresco dining, you can overlook the bow which features large, comfortable seating areas and sun pads with optional sun awnings.

The exterior relaxation area on the sundeck allows you to enjoy 360-degree views featuring sun pads with storage space underneath, 4 large chairs, and 2 large coffee tables with a cohesive minimalistic design. All the way aft are additional sun pads and lounge areas which are covered by removable sun awnings. Dividing the dining area from the exterior relaxation area is a console equipped with fridge, ice maker and storage as well a 75" rise and fall television.

Leading down the stairs there is access to the beach club with port side day head. This then leads to the tender garage equipped with ample storage and 3 refrigerators with an opening starboard side door before reaching the engine control room and the engine room.

---

## Accommodations

---

- On deck master stateroom with ensuite
- 4 x Below deck staterooms
- 2nd Owner's stateroom with ensuite
- 1 x VIP stateroom with ensuite (with pullman)
- 2 x Convertible twin configuration staterooms with ensuites (both with pullmans)
- Upgraded Carrara marble in all ensuites

---

## Main Machinery

---

- 2 x CAT C32 ACERT 1417kW Engines, 1115 hours
- 2 x Kohler 3 Phase Generators 70kW, 3600 hours

- 2 x Fin Zero speed Stabilisers CMC Electric

\*Full build specs are available upon request.

## Auxiliary Equipment

---

- Eekles Frequency Converter
- 2 x Selmar watermakers (300 liters per hour)
- OPEM steering system
- Selmar water softener system
- Selmar sewage treatment system Blue Sea Plus Model 4000
- 2 x 800 AHU air conditioning guest, one crew
- Hydromar garage crane to launch tender
- Hydromar aft main gangway with 2 remote controls
- 8 x Underwater lights
- Besenzoni side boarding ladder (starboard side aft)

## Entertainment and A/V Equipment

---

- Apple TV in each guest cabin
- Domoteque (audio, blinds, and lights controlled by iPad on the main deck and sun deck)
- Party Mode
- 2 x 65" TVs in Owner Cabin
- 1 x 48" TV in VIP Cabin
- 2 x 42" TVs in Guest Cabins

## Communication and Navigation Equipment

---

### Bridge

- 1 x VHF DSC Class A (Repeated crew Mess)
- 1 x SSB Mf/HF DSC Class A
- 1 x Inmarsat C System

### Other Communication

- 1 x Dock WIFI system
- 1 x Cell phone system (available for use in USA)

## CCTV

- 5 x Fixed cameras
- 3 x PTZ cameras in (2 x on top of mast; 1 x in engine room)
- 1 x FLIR camera on top of mast
- 1 x MATRIX Switch

## Navigation Equipment

- 4 x 19" LCD Monitors
- 1 x 19" LCD (CCTV) monitor
- 2 x Radar 6KW 96nm
- 1 x 5'7" DGPS display colored LCD display
- 1 x 4'3" GPS display colored
- 2 x 4'3" Multifunction data colored LCD display
- 1 x Chartplotter system
- 1 x GYRO compass
- 1 x Magnetic compass
- 1 x Autopilot system
- 1 x 4'5" Echo Sounder system display
- 1 x 4'5" Speed Log system display
- 1 x 4'5" AIS system display

## Galley and Laundry Equipment

---

### Main Galley

- Miele 1.5 size induction Hob
- Miele 1.5 size oven
- Ninci Extractor hood
- Ninci Sink macerator
- Miele dishwasher
- Double stainless-steel sink with macerator
- 1 x Miele fridge/freezer
- 1 x Miele full-size fridge

### Pantry

- Liebherr Grand Cru wine chiller

- 2 x Vitrefrigo Chiller drawer
- Miele full-size dishwasher
- Stainless-steel double sink with macerator
- Isotherm icemaker

### Laundry Equipment

- 2 x Miele washing machines
- 2 x Miele dryers

### Garage

- 2 x Custom refrigerators
- 1 x Custom freezer

## Crew Accommodations

---

### Captain's Cabin

- Ensuite
- Music controlled by iPad and lighting
- 40" TV
- Apple TV

### Crew Cabins

- 3 x Cabins with 2 x berths in each
- All ensembles
- 19" TV in each cabin
- Apple TV in each cabin
- Engineer cabin CCTV monitoring

### Crew Quarters

- Miele microwave
- 2 x Vitrefrigo chiller drawers
- 37" Samsung TV

- 15" CCTV Monitor
- Furuno wind speed repeater
- Autoprime fire alarm system
- Furuno VHF radio

---

## Security, Safety and Firefighting Equipment

---

- 4 x 10-man Rafts ARIMAR deep Sea
- 2 x Life jackets in each cabin plus 8 extra
- 1 x EPIRB 406 Mhz
- 1 x SART 9 Ghz
- 1 x Navtex System (Monochrome 4'5" display)
- 1 x BNWAS Watch alarm system (crew mess)
- 38 x Fire extinguishers
- Smoke detectors as per RINA
- Heat Detectors as per RINA
- Flares as per RINA

---

## Tender

---

- Williams 505 Diesel Jet

---

## Exclusions

---

Owner's personal belongings.

---

## Disclaimer

---

The Company offers the details of this vessel or yacht in good faith but cannot guarantee or warrant the accuracy of this information nor warrant the condition of the vessel. A buyer should instruct his representatives, agents, or his surveyors, to investigate such details as the buyer desires validated. This vessel or yacht is offered subject to prior sale, price change, or withdrawal without notice.

# PHOTOS

**Main Salon**



**Main Salon**



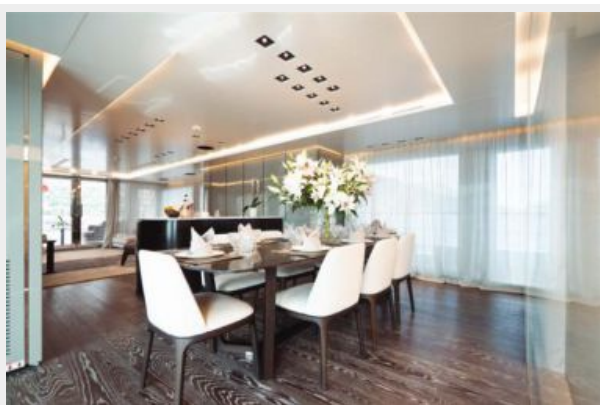
**Main Salon**



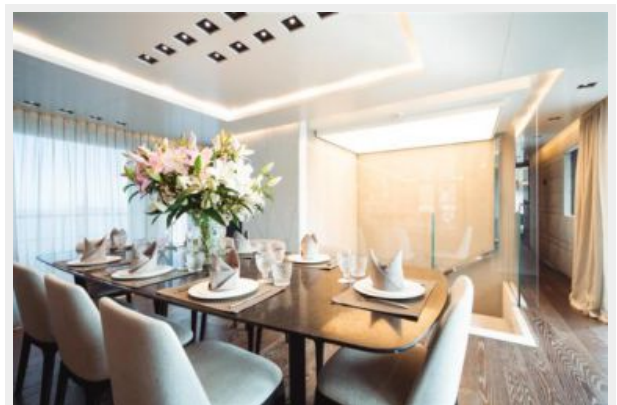
**Main Salon**



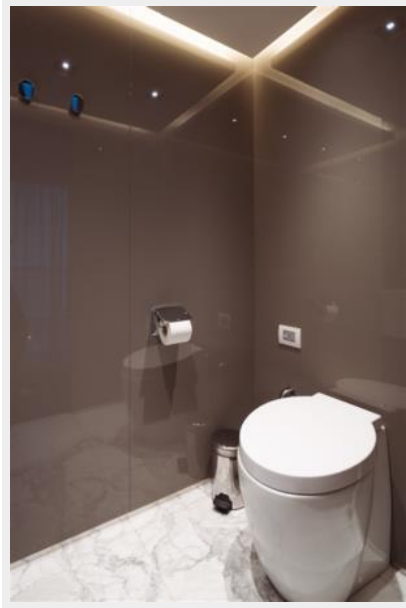
**Dining Area**



**Dining Area**



**Day Head**



**Master Stateroom**



**Master Stateroom**



**Master Stateroom**



**Master En Suite**

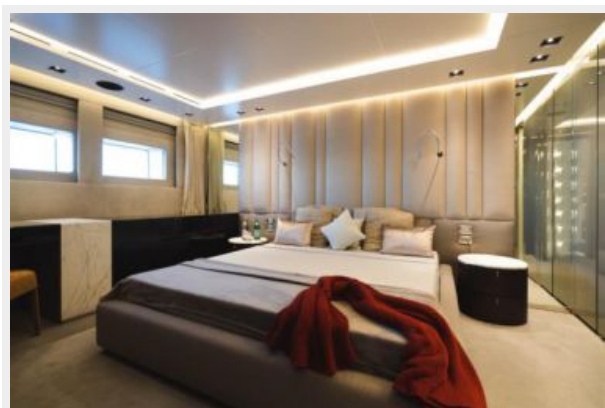


**Master En Suite**





**Second Master Stateroom**



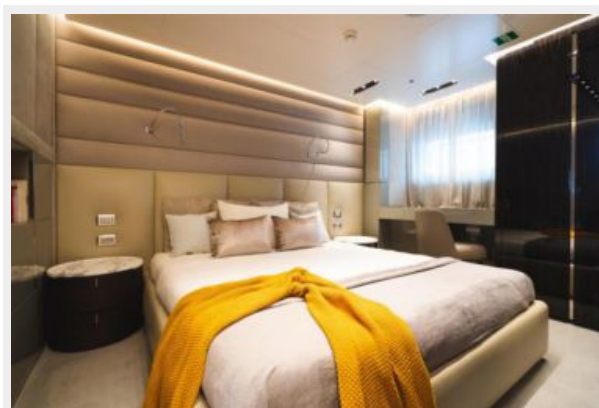
**Second Master Stateroom**



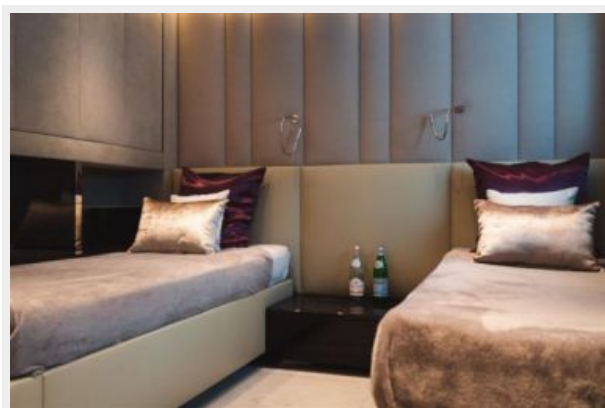
**Second Master Stateroom En Suite**



**VIP Stateroom**



**Twin Stateroom**



**Twin Stateroom**





**Aft Deck**



**Aft Deck**



**Sundeck Lounge**



**Sundeck Lounge**



**Sundeck Lounge**



**Sundeck Aft**



**Sundeck Aft**



**Sundeck Dining Area**



**Sundeck Dining Area**



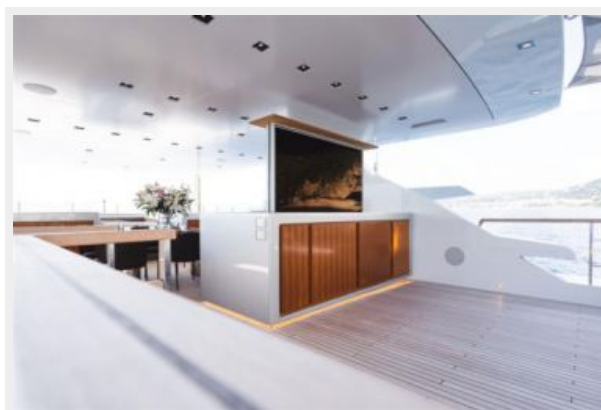
**Sundeck**



**Sundeck**

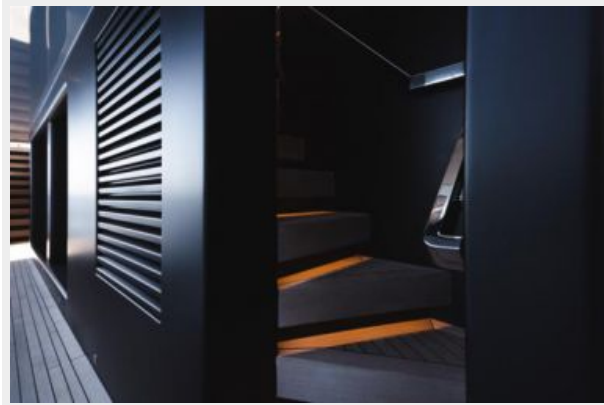


**Sundeck Entertainment Area**





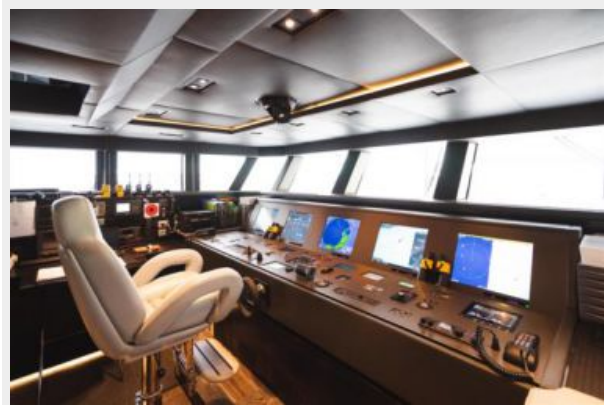
**Stairs to Sundeck**



**Bridge**



**Bridge**



**Galley**



**Galley**



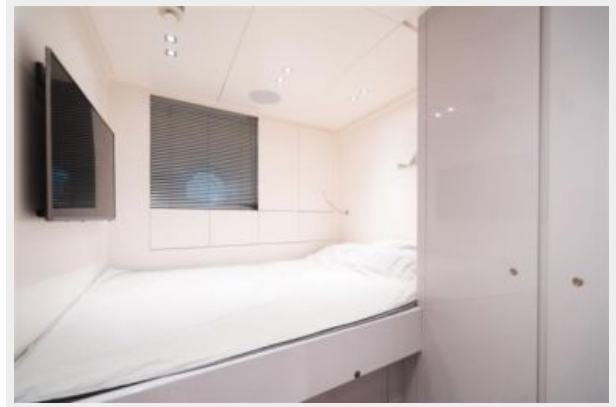
**Pantry**



**Crew Mess**



**Captain's Quarter**



**Laundry**



**Crew Hallway**



**Foredeck Seating Area**



**Foredeck**



**Foredeck**



**Beach Club**



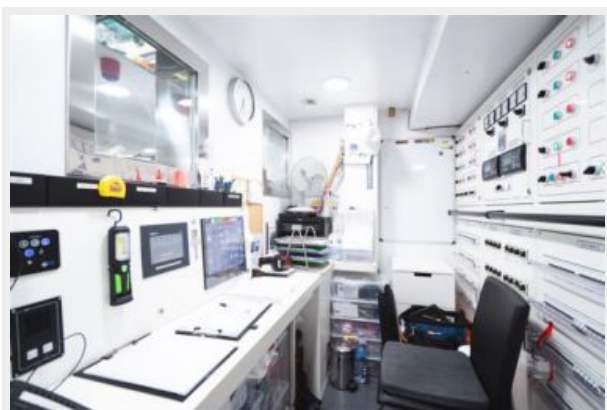
**Tender Garage**



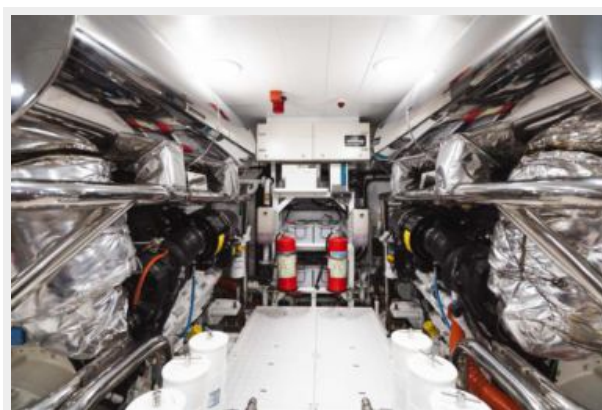
**Williams 505 Diesel Jet Tender**



**Engine Control Room**



**Engine Room**





**Engine Room**



**Port Running**



**Bow Running**



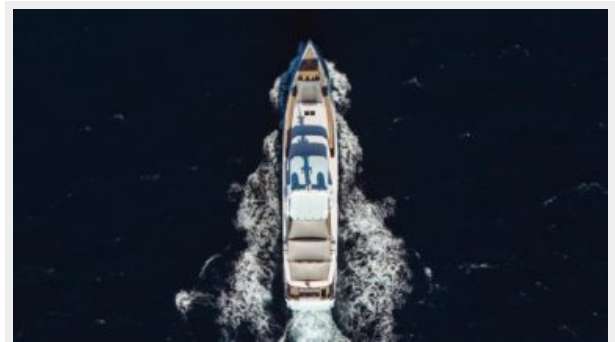
**Bow Running**



**Port Running**



**Aerial**



Aerial Running



Port Profile



SAGE 40m Admiral General Arrangement

M/Y SAGE Consumption Table

M/Y SAGE								
FUEL BURN TABLE								
LOAD	FUEL CON	APPARENT	SEA/NE 01 ENG	SEA/NE 2 ENG	SEA/NE 3 ENG	TOTAL CONSUM	RANGE Miles	Range Hours/Days
15%	5 Knot	680	7	14	15	36	1688	47,4
35%	6 Knot	790	10	20	15	45	1645	39,2
55%	7 Knot	870	15	30	15	60	1518	30,3
75%	8 Knot	950	20	40	15	75	1400	25
95%	8,5 Knot	1074	22	44	15	81	1273	23,3
100%	9 Knot	1080	30	60	15	105	1103	18,3
21%	10 Knot	1240	45	126	15	186	1040	9,75
24%	11 Knot	1410	64	168	15	247	1000	7,5
28%	12 Knot	1480	86	176	15	276	1016	7,2
44%	13 Knot	1627	128	256	15	399	1060	5
55%	14 Knot	2035	180	320	15	515	1178	4,1
68%	15 Knot	2440	192	384	15	591	1214	3,4
77%	16 Knot	2850	225	450	15	690	1113	2,9
85%	17 Knot	3070	240	480	15	735	1103	2,7
90%	17,3 Knot	3145	250	500	15	765	1091	2,6
96%	18 Knot	3550	280	560	15	855	1037	2,4
100%	19 Knot	3700	290	580	15	885	1049	2,3
ECONOMICAL SPEED (FUEL-RANGE)								
ECONOMICAL SPEED (RANGE-DAYS)								



# CONTACTS

---

Andrey Shestakov, leading yacht broker of the sales department of Shestakov Yacht Sales Inc. Shestakov Yacht Sales Inc., the official representative of the Miami/Fort Lauderdale FL headquarters.

## Contact details

---

Email: **andrey@shestakovyachtsales.com**

Web: [shestakovyachtsales.com/en/](http://shestakovyachtsales.com/en/)

## Telephones

---

USA: **+1(954)274-4435**

## Office hours

---

Monday – Saturday: **9:00 - 21:00 EDT**

Sunday: **closed**

## Address

---



Harbour Towne Marina, 850 NE 3rd St,  
STE 213, Dania, FL 33004