

# JOYME — PHILIP ZEPTER YACHTS



**Builder:** PHILIP ZEPTER YACHTS

**Year Built:** 2011

**Model:** Motor Yacht

**Price:** PRICE ON APPLICATION

**LOA:** 163' 9" (49.9mm)

**Beam:** 29.88

**Max Draft:** 8' 5" (2.55mm)

**Cruise Speed:** 13 Knots Kts. (15 MPH)

**Max Speed:** 15 Knots Kts. (17 MPH)

Our experienced yacht broker, Andrey Shestakov, will help you choose and buy a yacht that best suits your needs **joyMe — PHILIP ZEPTER YACHTS** from **our catalogue**. Presently, at **Shestakov Yacht Sales Inc.**, we have a wide variety of yachts available on **our sale's list**. We also work in close contact with all the big **yacht manufacturers** from all over the world.

If you would like to buy a yacht **joyMe — PHILIP ZEPTER YACHTS** or would like help answering any questions concerning purchasing, selling or chartering a yacht, please call **+1(954)274-4435**

# TABLE OF CONTENTS

---

TABLE OF CONTENTS	2
SPECIFICATIONS	3
Overview	3
Basic Information	3
Dimensions	3
Speed, Capacities and Weight	4
Accommodations	4
Hull and Deck Information	4
Engine Information	4
PHOTOS	5
JOYME - New Exterior 01 - Vickers Studio	5
JOYME - New Interior 01 - Vickers Studio	5
JOYME - New Interior 02 - Vickers Studio	5
CONTACTS	8
Contact details	8
Telephones	8
Office hours	8
Address	8

# SPECIFICATIONS

---

## Overview

---

Stylish JOYME has six generously-sized cabins including a master suite, a VIP suite on the bridge deck and four double guests cabins all on the main deck. Each of the cabins is tailored around an individual theme, fusing pop art with bright colours and contemporary furnishings. Spacious and versatile, JOYME can accommodate up to 12 guests onboard overnight. On the upper deck, the owner's apartment has two staterooms with a large ensuite bathroom and a comfortable salon. The apartment also opens onto a private terrace with a lounge area overlooking the ocean. JOYME's guest accommodation is situated on the main deck and made up of two double cabins plus two twin cabins. Both twin cabins can be converted to doubles as required. All the staterooms are equipped with an entertainment system and have ensuite bathroom facilities. JOYME also has accommodation for a 12-person crew onboard. A stunning blend of style and sophistication, JOYME's spectacular interior was created by Marjana Radovic from Standby Studio. White walls are paired with contemporary furnishings for dramatic effect while over-sized windows fill the space with light. On the main deck, an open-plan salon and bar area are designed for socialising while the formal dining room is ideal for entertaining. On the upper deck, a fabulous sky lounge offers comfortable seating plus a full entertainment system. The lower deck is dedicated to relaxation with a fully-equipped gym and spa featuring a sauna and hammam. With her sleek lines and distinctive exterior profile, JOYME is one of the most instantly recognisable yachts on the water. Built in steel and aluminium with teak decks, she has vast outdoor living spaces with multiple lounge and dining areas. Her huge aft deck is ideal for al fresco meals with a large dining table and built-in ergonomic seating. The sun deck is set up as the ultimate outdoor playground with a lounge and bar area plus a 3.5m spa pool overlooking the ocean.

## Basic Information

---

**Category:** Motor Yacht

**Model Year:** 2011

**Year Built:** 2011

**Refit Type:** 10 Years Class Survey

## Dimensions

---

**LOA:** 163' 9" (49.9mm)

**LWL:** 145' 9" (44.42mm)

**Beam:** 29.88

**Max Draft:** 8' 5" (2.55mm)

---

## Speed, Capacities and Weight

---

**Cruise Speed:** 13 Knots Kts. (15 MPH) **Cruise Speed Range:** 3000

**Max Speed:** 15 Knots Kts. (17 MPH) **Gross Tonnage:** 620 Pounds

**Water Capacity:** 48000 Gallons **Fuel Capacity:** 60000 Gal Gallons

---

## Accommodations

---

**Total Cabins:** 6

**Sleeps:** 12

**Total Heads:** 6

**Crew Cabin:** 12

---

## Hull and Deck Information

---

**Hull Material:** Steel

**Deck Material:** Teak

**Hull Designer:** Srdjan Djakovic

**Exterior Designer:** Philip Zepter Yachts

**Interior Designer:** Marjana Radovic

---

## Engine Information

---

**Engines:** 2

**Manufacturer:** Cummins

**Fuel Type:** Diesel

# PHOTOS

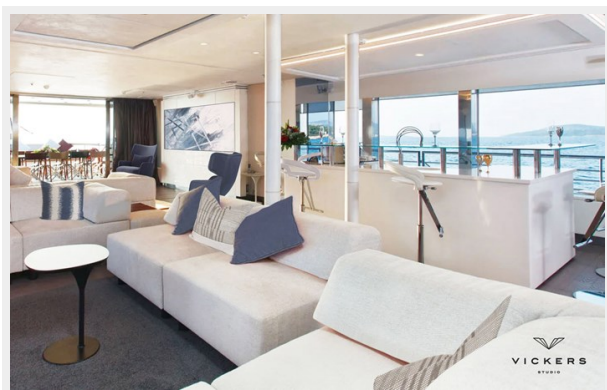
**JOYME - New Exterior 01 - Vickers Studio**

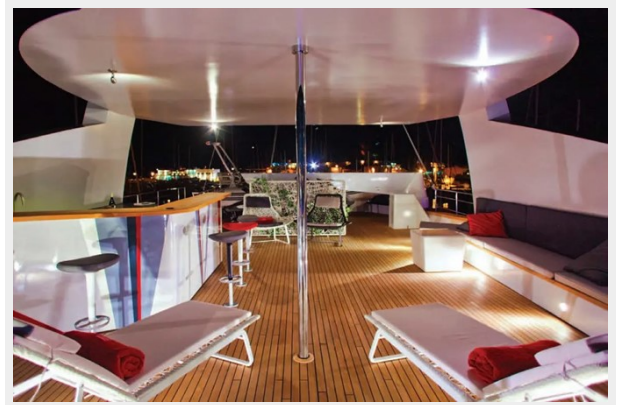
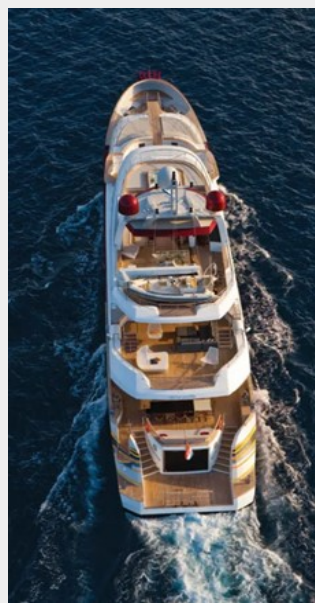


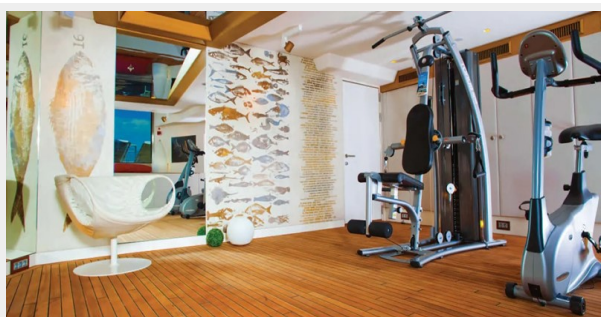
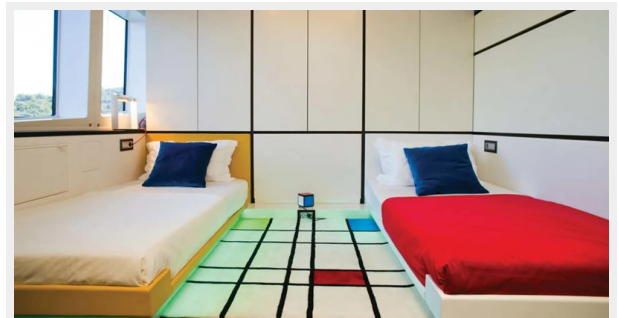
**JOYME - New Interior 01 - Vickers Studio**



**JOYME - New Interior 02 - Vickers Studio**







# CONTACTS

---

Andrey Shestakov, leading yacht broker of the sales department of Shestakov Yacht Sales Inc. Shestakov Yacht Sales Inc., the official representative of the Miami/Fort Lauderdale FL headquarters.

## Contact details

---

Email: **andrey@shestakovyachtsales.com**

Web: [shestakovyachtsales.com/en/](https://shestakovyachtsales.com/en/)

## Telephones

---

USA: **+1(954)274-4435**

## Office hours

---

Monday – Saturday: **9:00 - 21:00** EDT

Sunday: **closed**

## Address

---



Harbour Towne Marina, 850 NE 3rd St, STE 213, Dania, FL 33004