

## LA DOLCE VITA — CAL



**Builder:** CAL

**Year Built:** 1983

**Model:** Sloop

**Price:** PRICE ON APPLICATION

**Location:** United States

**LOA:** 35' 0" (10.67m)

**Beam:** 11' 2" (3.40m)

**Min Draft:** 5' 0" (1.52m)

**Max Draft:** 5' 0" (1.52m)

Our experienced yacht broker, Andrey Shestakov, will help you choose and buy a yacht that best suits your needs **La Dolce Vita — CAL** from our catalogue. Presently, at Shestakov Yacht Sales Inc., we have a wide variety of yachts available on our sale's list. We also work in close contact with all the big yacht manufacturers from all over the world.

If you would like to buy a yacht **La Dolce Vita — CAL** or would like help answering any questions concerning purchasing, selling or chartering a yacht, please call **+1(954)274-4435**

# TABLE OF CONTENTS

TABLE OF CONTENTS	2
SPECIFICATIONS	5
Overview	5
Basic Information	5
Dimensions	5
Speed, Capacities and Weight	6
Accommodations	6
Hull and Deck Information	6
Engine Information	6
DETAILED INFORMATION	7
VESSEL WALKTHROUGH	7
GALLEY	7
Rigging	7
ENGINE NOTES	7
Exclusions	8
Disclaimer	8
PHOTOS	9
1983 Cal 35 MK II Sloop	9
Cal 35 Galley	9
main salon	9
port top deck	9
fixed port lights	9
aft cockpit	9
1983 Cal 35 MK II Sloop	10
1983 Cal 35 MK II Sloop bow	10
1983 Cal 35 MK II Sloop port bow	10
1983 Cal 35 MK II Sloop	10
Cal 35 aft cockpit sloop	10

Cal 35 aft cockpit	10
fix port lights	11
Cal 35 aft cockpit looking forward	11
LDV	11
main salon	11
Full galley	11
Propane oven	11
two-burner propane stove	12
double stainless sink	12
plenty of galley storage	12
port view of main salon	12
port settee	12
starboard view of main salon	12
starboard L-shaped settee	13
salon bulkhead port	13
salon looking forward to v-berth	13
salon bulkhead starboard	13
Spacious v-berth	13
stowage in v-berth	13
hanging locker and stowage	14
view aft from v-berth	14
marine head, shower and sink	14
marine head	14
view aft from main salon	14
engine bay access	14
electrical panel	15
Atomic 40 diesel	15
Atomic 40 Diesel engine	15
Atomic 40 Diesel engine	15

Main salon skylight	15
Fixed port lights	15
opening port lights	16
Navigation station	16
VHF and stereo	16
battery charger	16
1983 Cal 35 MK II sloop	16
View of top deck looking forward	16
roller furling jib and anchor locker	17
Harken roller furling jib	17
Barient winches	17
Non skid top deck paint	17
top deck looking aft	17
top deck view aft	17
1983 Cal 35 MK II Bow and anchor	18
Cal 35 Stern with Bimini	18
View of Cal 35 cockpit	18
Cal 35 MK II cockpit	18
New Suzuki outboard & inflatable dinghy	18
New canvas Bimini top and mainsail cover	18
Magma stainless grill	19
Aft swim ladder	19
1983 Cal 35 MK II starboard bow	19
1983 Cal 35 MK II port bow	19
<b>CONTACTS</b>	<b>20</b>
Contact details	20
Telephones	20
Office hours	20
Address	20

---

# SPECIFICATIONS

---

## Overview

---

1983 CAL 35 Mk II Sloop Cruiser with new dinghy & new Suzuki outboard. This CAL 35 Mk II layout includes sleeping accommodations for six in two cabins. All cushions are 5" foam and the sole is teak and holly. Portable AC brings comfort inside. Navigation and electronics include an Echomap 44DV GPS plotter and Standard Horizon VHF. New AGM batteries were installed in 2019. Steel fuel tanks are in good condition, PVS water tanks in good condition. Inspected in 2016 when H2O systems were replumbed. NEW Dinghy, NEW Suzuki DF2.5 outboard, and Magma BBQ grill included. Last bottom job done January 2018. Per the seller, all systems work as they should and LED lights, the standing rigging and roller furling were installed in 2018. Water, fuel, and electrical systems were overhauled with the hull in 2016. Very clean interior with no noted odors, leaks, tears, or issues of any kind.

\*\*\*Call, text, or email Michael Harris at 843-868-1212 for more information or to schedule a showing.\*\*\*

Offers Encouraged!

---

## Basic Information

---

**Category:** Sloop

**Sub Category:** Aft Cockpit

**Model Year:** 1983

**Year Built:** 1983

**Country:** United States

**Vessel Top:** Open W/Bimini Top

---

## Dimensions

---

**LOA:** 35' 0" (10.67m)

**Beam:** 11' 2" (3.40m)

**Min Draft:** 5' 0" (1.52m)

**Max Draft:** 5' 0" (1.52m)

**Clearance:** 54' 0" (16.46m)

---

## Speed, Capacities and Weight

---

**Gross Tonnage:** 16 Pounds

**Water Capacity:** 60 Gallons

**Holding Tank:** 25 Gallons

**Fuel Capacity:** 30 Gallons

---

## Accommodations

---

**Total Cabins:** 1

**Total Berths:** 4

**Sleeps:** 6

**Total Heads:** 1

---

## Hull and Deck Information

---

**Hull Material:** Fiberglass

**Deck Material:** Fiberglass

**Hull Color:** white

**Hull Finish:** Polyethylene

---

## Engine Information

---

**Engines:** 1

**Manufacturer:** Atomic

**Model:** 40

**Engine Type:** Inboard

**Fuel Type:** Diesel

---

# DETAILED INFORMATION

---

## VESSEL WALKTHROUGH

---

The forward cabin v-berth includes a hanging locker and four drawer bureau with large storage shelf. Amidships starboard is a large head with separate shower stall, loads of storage space in outboard lockers, a marine toilet and vanity with sink. Directly across from the door to the head is a large hanging locker. Moving aft there is a full-length settee to starboard that slides open to a double bed and a single settee to port. Aft of the port settee is a functional galley with plenty of storage. Across from the galley is a sit-down navigation station with a lift-top table and three long drawers underneath. Outboard shelving provides additional space for books and electronics. A large quarter berth which provides the seating for the nav station is the aft-most feature of the Cal 35's interior. Additional features: anchor light, lightning ground, cockpit cushions, emergency tiller, ensign and staff, horseshoe life ring, spreader lights, sail covers, and swim ladder.

## GALLEY

---

- Icebox 8-cubic feet
- Two burner propane stove with oven
- Pressurized water system
- Stainless steel double sink
- Hot water provided by a model 300 Woltar propane instant and continuous water heater.
- Five storage lockers, including a trash bin under the sinks provide ample space for provisions and cooking gear.

## Rigging

---

- Equipped for cruising
- aluminum spar stepped on keel
- stainless wire standing rigging replaced 2018
- Harken roller furling installed 2018
- 6 Barent winches manual boom vang
- 3 dacron Hood sails - main with 2 sets of reef points, jib
- #1 genoa; mainsheet traveler
- 130% roller furling genoa and a 110% working jib

## ENGINE NOTES

---

- Universal 40 Atomic Diesel 32 HP
- Manual CO2 fire extinguishing system

- Cockpit controls
- Edson manual steering
- Acoustical and thermal insulation
- 2 automatic and manual bilge pump
- Electrical head/macerator.
- Engine Details: Fresh water cooling system; fuel filters; engine alarm; raw water sea strainer.

---

## Exclusions

---

Owner's personal belongings.

---

## Disclaimer

---

The Company offers the details of this vessel or yacht in good faith but cannot guarantee or warrant the accuracy of this information nor warrant the condition of the vessel. A buyer should instruct his representatives, agents, or his surveyors, to investigate such details as the buyer desires validated. This vessel or yacht is offered subject to prior sale, price change, or withdrawal without notice.



# PHOTOS

**1983 Cal 35 MK II Sloop**



**Cal 35 Galley**



**main salon**



**port top deck**



**fixed port lights**



**aft cockpit**



**1983 Cal 35 MK II Sloop**



**1983 Cal 35 MK II Sloop bow**



**1983 Cal 35 MK II Sloop port bow**



**1983 Cal 35 MK II Sloop**



**Cal 35 aft cockpit sloop**



**Cal 35 aft cockpit**



**fix port lights**



**Cal 35 aft cockpit looking forward**



**LDV**



**main salon**



**Full galley**



**Propane oven**



**two-burner propane stove**



**double stainless sink**



**plenty of galley storage**



**port view of main salon**



**port settee**



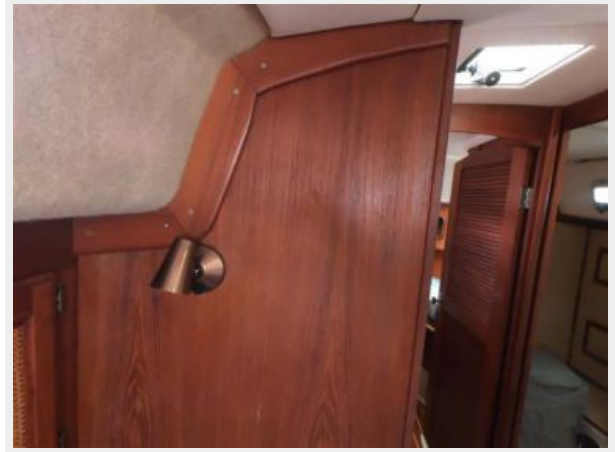
**starboard view of main salon**



**starboard L-shaped settee**



**salon bulkhead port**



**salon looking forward to v-berth**



**salon bulkhead starboard**



**Spacious v-berth**



**stowage in v-berth**



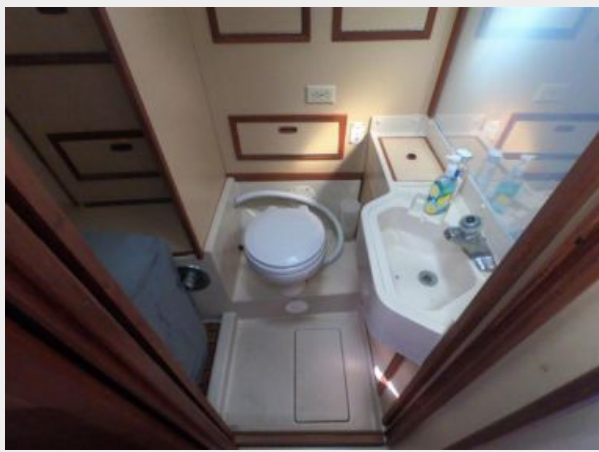
**hanging locker and stowage**



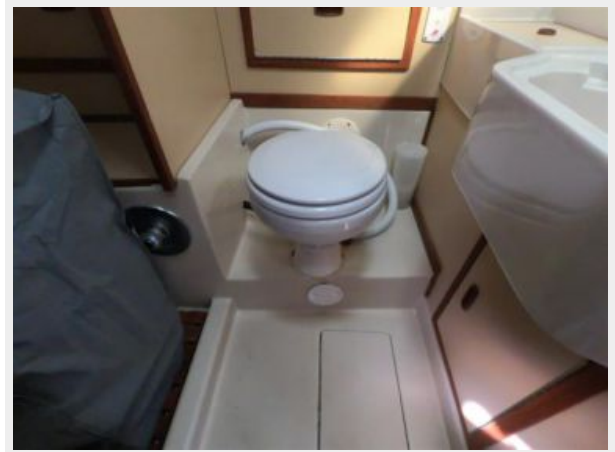
**view aft from v-berth**



**marine head, shower and sink**



**marine head**



**view aft from main salon**



**engine bay access**



**electrical panel**



**Atomic 40 diesel**



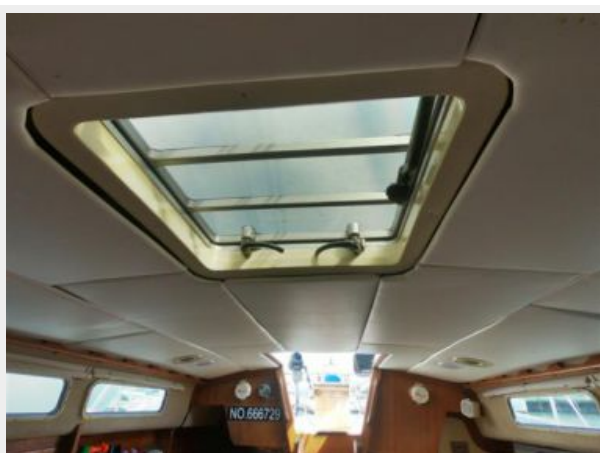
**Atomic 40 Diesel engine**



**Atomic 40 Diesel engine**



**Main salon skylight**



**Fixed port lights**



**opening port lights**



**Navigation station**



**VHF and stereo**



**battery charger**



**1983 Cal 35 MK II sloop**



**View of top deck looking forward**





**roller furling jib and anchor locker**



**Harken roller furling jib**



**Barient winches**



**Non skid top deck paint**



**top deck looking aft**



**top deck view aft**



**1983 Cal 35 MK II Bow and anchor**



**Cal 35 Stern with Bimini**



**View of Cal 35 cockpit**



**Cal 35 MK II cockpit**



**New canvas Bimini top and mainsail cover**



**New Suzuki outboard & inflatable dinghy**



**Magma stainless grill**



**Aft swim ladder**



**1983 Cal 35 MK II starboard bow**



**1983 Cal 35 MK II port bow**



# CONTACTS

---

Andrey Shestakov, leading yacht broker of the sales department of Shestakov Yacht Sales Inc. Shestakov Yacht Sales Inc., the official representative of the Miami/Fort Lauderdale FL headquarters.

## Contact details

---

Email: [andrey@shestakovyachtsales.com](mailto:andrey@shestakovyachtsales.com)

Web: [shestakovyachtsales.com/en/](http://shestakovyachtsales.com/en/)

## Telephones

---

USA: +1(954)274-4435

## Office hours

---

Monday – Saturday: **9:00 - 21:00** EDT

Sunday: **closed**

## Address

---



Harbour Towne Marina, 850 NE 3rd St,  
STE 213, Dania, FL 33004