

AURORA — BAVARIA



Builder: BAVARIA

Year Built: 2004

Model: Cruising Sailboat

Price: PRICE ON APPLICATION

Location: United States

LOA: 36' 0" (10.97m)

Beam: 11' 10" (3.61m)

Max Draft: 6' 6" (1.98m)

Our experienced yacht broker, Andrey Shestakov, will help you choose and buy a yacht that best suits your needs **Aurora — BAVARIA** from our catalogue. Presently, at Shestakov Yacht Sales Inc., we have a wide variety of yachts available on our sale's list. We also work in close contact with all the big yacht manufacturers from all over the world.

If you would like to buy a yacht **Aurora — BAVARIA** or would like help answering any questions concerning purchasing, selling or chartering a yacht, please call **+1(954)274-4435**

TABLE OF CONTENTS

TABLE OF CONTENTS	2
SPECIFICATIONS	5
Overview	5
Basic Information	5
Dimensions	5
Speed, Capacities and Weight	5
Accommodations	5
Hull and Deck Information	6
Engine Information	6
DETAILED INFORMATION	7
MAIN DESCRIPTION	7
36' BAVARIA VESSEL WALKTHROUGH	7
36' BAVARIA ACCOMMODATIONS	7
36' BAVARIA SALON	7
36' BAVARIA GALLEY	7
36' BAVARIA DINING	7
36' BAVARIA FORWARD STATEROOM	8
36' BAVARIA AFT STATEROOMS	8
36' BAVARIA COCKPIT	8
36' BAVARIA AUDIO/VIDEO EQUIPMENT	8
36' BAVARIA ELECTRONICS	8
36' BAVARIA ELECTRICAL SYSTEM	8
36' BAVARIA ENGINE/MECHANICAL EQUIPMENT	8
36' BAVARIA DECK EQUIPMENT	9
36' BAVARIA SAILS/RIGGING	9
36' BAVARIA SAFETY AND FIRE PROTECTION	9
36' BAVARIA EXCLUSIONS	9
DISCLAIMER	9

Exclusions	9
Disclaimer	9
PHOTOS	11
38	11
39	11
2	11
1	11
26	11
27	11
21	12
7	12
13	12
22	12
15	12
6 (2)	12
29	13
17	13
31	13
19	13
30	14
11	14
37	14
25	14
10	14
14	14
24	15
6	15
28	15
12	15

4	15
18	15
16	16
32	16
5	16
33	16
35	16
23	16
9	17
8	17
34	17
36	17
3	17
20	17
CONTACTS	18
Contact details	18
Telephones	18
Office hours	18
Address	18

SPECIFICATIONS

Overview

Aurora is a 2004 36' Bavaria 3 cabin model in very nice condition. She is well-equipped and well-maintained. She offers a 29 hp Volvo Penta auxiliary with Sail Drive, Heart Interface 2000 watt inverter, Ocean Breeze 16,500 BTU air conditioning/heating system, Lofrens Cayman 88 anchor windlass, Harken roller furler, fully battened Mainsail with stack pack, running/standing rigging replaced in 2017, fully equipped galley and African Mahogany interior. Her sellers have moved ashore to pursue other hobbies, so Aurora is priced to sell.

Basic Information

Category: Cruising Sailboat

Sub Category: Sloop

Model Year: 2004

Year Built: 2004

Country: United States

Dimensions

LOA: 36' 0" (10.97m)

Beam: 11' 10" (3.61m)

Max Draft: 6' 6" (1.98m)

Clearance: 50' 6" (15.39m)

Speed, Capacities and Weight

Displacement: 12000 Pounds

Water Capacity: 80 Gallons

Holding Tank: 15 Gallons

Fuel Capacity: 40 Gallons

Accommodations

Total Cabins: 3

Total Berths: 5

Total Heads: 1

Hull and Deck Information

Hull Material: Fiberglass

Engine Information

Engines: 1

Manufacturer: Volvo Penta

Model: MD2030-D B1

Engine Type: Sail Drive

Fuel Type: Diesel

DETAILED INFORMATION

MAIN DESCRIPTION

Aurora is a 2004 36' Bavaria 3 cabin model in very nice condition. She is well-equipped and well-maintained. She offers a 29 hp Volvo Penta auxiliary with Sail Drive, Heart Interface 2000 watt inverter, Ocean Breeze 16,500 BTU air conditioning/heating system, Lofrens Cayman 88 anchor windlass, Harken roller furler, fully battened Mainsail with stack pack, running/standing rigging replaced in 2017, fully equipped galley and African Mahogany interior. Her sellers have moved ashore to pursue other hobbies, so Aurora is priced to sell.

36' BAVARIA VESSEL WALKTHROUGH

From the swimplatform, you can walk through the open transom into the cockpit and find benchseating with storage on either side. Walk forward and step down into the salon, where you will find a stateroom aft on each side, galley port aft, benchseat/berth/storage to port and to starboard, nav station starboard aft, head port forward and another stateroom forward. The head room in the forward stateroom and head is 5'9", 6'1" in the salon, 5'11" in the galley and 6' in each aft stateroom. The forward stateroom berth is 6'9" long, the salon port berth is 5'9" long, the salon starboard berth is 6'1" long and the aft staterooms berths are 6'9" long.

36' BAVARIA ACCOMMODATIONS

Aurora offers a stateroom forward with a v-berth and two staterooms aft with a double size berth each. The salon has a single benchseat/berth on each side forward. The head is port forward.

36' BAVARIA SALON

The salon offers a benchseat/berth with storage on each side forward, centerline folding teak table, teak & holly sole, storage cabinets, 4 portlights, overhead hatch with shade and a fan. To view a 360 degree photo of the salon, copy and paste the link below into your browser:

36' BAVARIA GALLEY

The galley is located port aft in the salon.- Bavaria Yachts 2-burner propane cooktop and oven- WestBend microwave oven- Waeco Coolmatic cold-plate refrigeration- Double stainless steel sinks- Storage cabinets and drawers- Formica countertop- Magma stainless steel BBQ grill in the cockpit

36' BAVARIA DINING

Dining space is available at the salon fold-up teak table and the cockpit fold up table.

36' BAVARIA FORWARD STATEROOM

The forward stateroom offers a v-berth, fan, overhead hatch with shade, storage cabinets, hanging locker, benchseat with storage starboard aft and direct access to the head.

36' BAVARIA AFT STATEROOMS

Both aft staterooms offer a double size berth, fan, 2 portlights, hanging locker, storage cabinet and shelf.

36' BAVARIA COCKPIT

The cockpit offers a sealed teak deck, dodger, bimini, benchseat with storage each side, walk-thru transom aft, folding lift up table and helm.

36' BAVARIA AUDIO/VIDEO EQUIPMENT

- JVC KD-S730 stereo/CD player

36' BAVARIA ELECTRONICS

- Raymarine Radar- Garmin GPS 152 chart plotter at the nav station- Icom IC-M422 VHF at the nav station with remote mic for the cockpit- Plastimo clock and barometer at the nav station- Raymarine autopilot in the cockpit (2017)- Raymarine C120 multi-function display in the cockpit with Navionics electronic charts- Raymarine ST60 wind, speed and depth displays in the cockpit- Plastimo Olympic 135 magnetic compass in the cockpit

36' BAVARIA ELECTRICAL SYSTEM

- Heart Interface 2000 watt inverter- Deka 904D battery (8/2017)- Duracell SLI4DA battery- Sure Power Industries multi battery isolator- Xantrex inverter/charger and battery monitor panel at the nav station- 30 amp shore cord and connection

36' BAVARIA ENGINE/MECHANICAL EQUIPMENT

- Volvo Penta MD2030-DB1 29 hp auxiliary with approximately 1197 hours- Volvo Penta S255A gearbox- Sail Drive with 3-blade folding propeller- Lewmar steering system- Ocean Breeze

reverse cycle air conditioning/heating system (16,500 BTU unit)- 15 gallon water heater- Jabsco manual head

36' BAVARIA DECK EQUIPMENT

- Lofrens Cayman 88 anchor windlass with remote control- Delta anchor- Stainless steel rails fore and aft and stainless steel stanchions with double lifelines and netting on each side- Non-skid decks and sealed teak deck in the cockpit- Outboard bracket- Stainless steel swim ladder- Hot/cold fresh water shower on the swimplatform- Custom winter cover

36' BAVARIA SAILS/RIGGING

- Selden spars- Double spreader mast- Fully battened Mainsail with lazyjacks and Doyle stack pack- Harken roller furler and Jib (2017)- Stormsail and anchor sail- Adjustable backstay- Running and standing rigging replaced in 2017- Rutgerson traveler- 2 X Harken self-tailing 16 winches- 2 X Harken self-tailing 40 winches- All lines lead aft to the cockpit for easy sail handling

36' BAVARIA SAFETY AND FIRE PROTECTION

- Class A Ocean EC conformity rating- Fire extinguishers- Xintex S-1 propane fume detector- First Alert smoke detector

36' BAVARIA EXCLUSIONS

- Sellers' personal belongings

DISCLAIMER

The Company offers the details of this vessel in good faith but cannot guarantee or warrant the accuracy of this information nor warrant the condition of the vessel. A buyer should instruct his agents, or his surveyors, to investigate such details as the buyer desires validated. This vessel is offered subject to prior sale, price change, or withdrawal without notice.

Exclusions

Owner's personal belongings.

Disclaimer

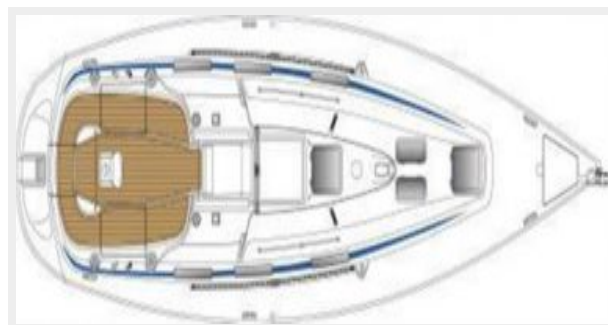
The Company offers the details of this vessel or yacht in good faith but cannot guarantee or warrant the accuracy of this information nor warrant the condition of the vessel. A buyer should instruct his representatives, agents, or his surveyors, to investigate such details as the buyer desires validated. This vessel or yacht is offered subject to prior sale, price change, or withdrawal without notice.

PHOTOS

38



39



2



1



26



27



21



7



13



22



15



6 (2)



17



29



31



19



30



11



37



25



10



14



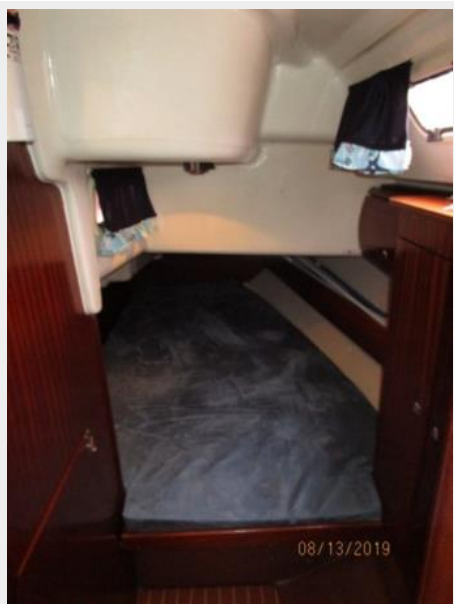
24



6



28



12



4



18



16



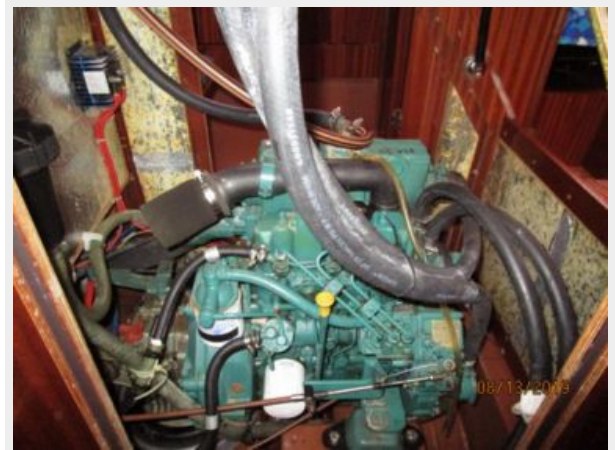
32



5



33



35



23



9



8



36



34



3



20



CONTACTS

Andrey Shestakov, leading yacht broker of the sales department of Shestakov Yacht Sales Inc. Shestakov Yacht Sales Inc., the official representative of the Miami/Fort Lauderdale FL headquarters.

Contact details

Email: andrey@shestakovyachtsales.com

Web: shestakovyachtsales.com/en/

Telephones

USA: +1(954)274-4435

Office hours

Monday – Saturday: **9:00 - 21:00** EDT

Sunday: **closed**

Address



Harbour Towne Marina, 850 NE 3rd St,
STE 213, Dania, FL 33004