

PLEXI VII — HATTERAS



Судостроитель: HATTERAS

Год постройки: 2006

Модель: Cruising Yacht

Цена: ЦЕНА ЯХТЫ ПО ЗАПРОСУ

Местонахождение: United States

Длина общая: 64' 0" (19.51m)

Ширина: 18' 3" (5.56m)

Макс. осадка: 4' 8" (1.42m)

Крейс. скорость: 26 Kts. (30 MPH)

Макс. скорость: 30 Kts. (35 MPH)

Купить **PLEXI VII — HATTERAS** а также выбрать подходящую вам яхту из нашего каталога яхт вам поможет опытный яхтенный брокер Андрей Шестаков. На сегодняшний день компания **Shestakov Yacht Sales Inc.** имеет большое количество яхт в собственном списке продаж, а также тесно сотрудничает со всеми крупными яхтенными производителями по всему миру.

Для того чтобы купить яхту **PLEXI VII — HATTERAS** а также проконсультироваться по любому вопросу связанному с покупкой, продажей, чартером яхт позвоните по телефону **+7(918)465-66-44**.

ОГЛАВЛЕНИЕ

ОГЛАВЛЕНИЕ	2
ХАРАКТЕРИСТИКИ	8
Обзор	8
Основная информация	10
Размеры	10
Скорость, вместимость и масса	10
Размещение	10
Корпус и палуба	11
Информация о двигателе	11
ПОДРОБНОЕ ОПИСАНИЕ	12
Vessel Details	12
Salon	14
Galley	15
Pilothouse	16
Master Stateroom	16
Master Head	17
Guest Stateroom Port	18
Guest Head	19
VIP Stateroom	20
VIP Head	21
Aft Deck	21
Lazarette	22
Flybridge	22
Electronics and Navigation Equipment	23
Electrical System	24
Engine and Mechanical Equipment	25
Hull and Deck Features	27
Исключения	28

Отказ от ответственности	28
ФОТОГРАФИИ	29
64 Hatt Profile 2	29
64 Hatt Port Profile 11	29
64 Hatt Strb Profile 1	29
64 Hatt Bow Profile 2	29
64 Hatt Bow Profile 5	29
64 Hatt Port Profile 4	29
64 Hatt Bow Profile 10	30
DSC_5991	30
DSC_5912	30
DSC_5913	30
DSC_5915	30
DSC_5916	30
DSC_5917	31
DSC_5918	31
DSC_5919	31
DSC_5920	31
DSC_5921	31
DSC_5922	31
DSC_5924	32
DSC_5925	32
DSC_5926	32
DSC_5927	32
DSC_5928	32
DSC_5929	32
64 Hatt Dinette 25	33
DSC_5930	33
64 Hatt Dinette 26	33

DSC_5928	33
64 Hatt Galley 24	33
DSC_5931	33
64 Hatt Galley 23	34
64 Hatt Galley 22	34
DSC_5932	34
DSC_5933	34
DSC_5934	34
DSC_5935	34
DSC_5936	35
DSC_5937	35
64 Hatt Washer-Dry 45	35
DSC_5938	35
DSC_5939	35
DSC_5940	35
DSC_5941	36
DSC_5942	36
DSC_5943	36
DSC_5944	36
DSC_5945	36
DSC_5946	36
DSC_5947	37
DSC_5948	37
DSC_5949	37
DSC_5950	37
DSC_5951	37
DSC_5952	37
DSC_5953	38
DSC_5954	38

DSC_5955	38
DSC_5956	38
DSC_5957	38
DSC_5958	38
DSC_5959	39
DSC_5960	39
DSC_5961	39
DSC_5962	39
DSC_5963	39
DSC_5964	39
DSC_5965	40
DSC_5966	40
DSC_5967	40
DSC_5968	40
DSC_5969	40
DSC_5970	40
DSC_5971	41
DSC_5972	41
DSC_5973	41
DSC_5974	41
64 Hatt Bridge 46	41
64 Hatt Bridge 47	41
64 Hatt Bridge 51	42
DSC_5976	42
DSC_5977	42
DSC_5979	42
DSC_5982	42
DSC_5983	42
DSC_5978	43

DSC_5981	43
DSC_5992	43
DSC_5988	43
DSC_5989	43
DSC_5989	43
DSC_5990	44
64 Hatt Aft Deck 12	44
DSC_5993	44
DSC_5994	44
DSC_5995	44
DSC_5996	44
DSC_5997	45
DSC_5998	45
DSC_5999	45
DSC_6000	45
DSC_6002	45
DSC_6003	45
64 Hatt Laz 67	46
DSC_6004	46
64 Hatt Laz 68	46
64 Hatt Laz 73	46
64 Hatt Laz69	46
DSC_5986	46
64 Hatt Ladder 84	47
64 Hatt Ladder 85	47
64 Hatt Bow face Aft 62	47
64 Hatt Bow 61	47
64 Hatt Port Bow Profile 3	48
КОНТАКТЫ	49

Контактная информация	49
Телефоны	49
Время работы	49
Адрес	49

ХАРАКТЕРИСТИКИ

Обзор

This is a very well maintained, extensively equipped and updated 2006 Hatteras 64 Motoryacht. This vessel has the upgraded engine package with MTU Common Rail 10V-2000 M93 @ 1500hp each. It is also the only 64 Hatteras on the market with Trac Zero Speed Stabilizers which were installed in 2017. The combination of the upgraded power package and the stabilizers provide superior performance and unsurpassed ride quality in its class. The main engines have just over 1200 hours and were just serviced in June of 2019 at which time PLEXI VII also received fresh bottom paint and an exterior detail in September 2019.

There are upgraded Garmin electronics at both helms (2016) and there is a bow and stern thruster with a Yacht Controller for precise handling around the dock.

The interior is in excellent condition with newer sofa, carpet, mattresses and bedding. A new wine cooler and refrigerator in the salon provide convenient access to refreshments. There is a 42 inch flat screen TV, LED lighting, a large custom sofa with storage beneath the seats and beautiful high gloss Cherry wood bulkheads. The fully equipped galley features under the counter Sub Zero refrigerator/freezer drawers, Microwave/Convection oven, under the counter conventional oven and a dishwasher. The galley also features granite counter tops and Amtico flooring. The large dinette seating is located to port of the galley. The stairway leading to the lower stateroom accommodations is located forward of the galley on the starboard side. There is abundant storage located in the bulkheads of the stairway. Below, the master stateroom is located aft and is full beam with a king size bed, hanging lockers port and starboard and a private head with shower. There is a 20 inch TV and nightstands with drawers. Moving forward there is a separate washer and dryer located in the companionway. The guest stateroom is located to port and has two separate single berths, air conditioner thermostat controls and private access to the day head. The VIP berth is located all the way forward and features a Queen size bed and a private head with shower.

There is an interior stairway which leads from the salon to the fly bridge which features two Pompanette Platinum Series helm chairs. The helm has two Garmin 7616 MFDs, Simrad Auto Pilot and ICOM VHF. There is a four sided enclosure and air conditioning along with a sink, electric grill and ice maker. There is ample built in seating on the port side and a table and chairs. Aft of the enclosure is the davit for an optional dingy and more entertainment area. The owner has added custom stainless railing around this area to make it a more secure and usable area for entertaining.

PLEXI VII is ready to cruise with a recently serviced water maker and two 21.5 KW generators. The large, well designed engine room is clean and organized and there is a large lazarette with ample storage and work space which is air conditioned. There are two bunks located in this area as well.

Below is a partial list of upgrades and updates featured on PLEXI VII:

- * Trac Zero Speed Stabilizers (03-17)
- * Engines Serviced (06-19)
- * Bottom Painted (06-19)
- * Exterior Detail (09-19)
- * New Trim Tab Control Box/Actuator (06-19)
- * Rebuilt Watermaker Pump (09-18)
- * New Wine Cooler (08-18)
- * Installed underwater lights (07-18)
- * New Mach 5 FW Pump (06-19)
- * New Air Conditioning Pumps (2) (03-18)
- * Custom Aft Bridge Railings Install (12-17)
- * New Stern Thruster (electric) (12-17)
- * New port AGM batteries (11-17)
- * New Whisperwall installed lower companionway (10-17)
- * New Salon Sofa (03-17)
- * New Garmin 7600 series Chartplotter and Radar (2016)
- * Interior LED lighting installed (2016)
- * New upholstery on bridge, aft deck, bow and dinette areas (2016)
- * New Seagrass flooring on bridge and aft deck (2016)
- * Custom cushion on flybridge forward of helm (2016)
- * Main deck windows resealed (2016)
- * New batteries (2016)
- * New interior carpets (2015)
- * New mattresses (2015)

The above list is not all inclusive but illustrates the ongoing maintenance and attention that

PLEXI VII receives from her owner.

Основная информация

Тип судна: Cruising Yacht

Подкатегория: Cabin Cruiser

Модельный год: 2006

Год постройки: 2006

Страна: United States

**Номер регистрации в береговой
охране:** 1180964

Открытая палуба мостика: Да

Размеры

Длина общая: 64' 0" (19.51m)

Ширина: 18' 3" (5.56m)

Макс. осадка: 4' 8" (1.42m)

Скорость, вместимость и масса

Крейс. скорость: 26 Kts. (30 MPH)

Макс. скорость: 30 Kts. (35 MPH)

Водоизмещение: 116000 Pounds

Вместимость воды: 265 Gallons

Вместимость сточного бака: 95 Gallons

Объем топливного бака: 1515 Gallons

Размещение

Всего кают: 3

Всего ком. состава: 3

Корпус и палуба

Материал корпуса: Fiberglass

Материал палубы: Fiberglass

Комплектация корпуса: Planing

Цвет корпуса: White

Отделка корпуса: Fiberglass

Информация о двигателе

Двигатели: 2

Производитель: MTU

Модель: V10-2000 M93

Тип двигателя: Inboard

Тип топлива: Diesel

ПОДРОБНОЕ ОПИСАНИЕ

Vessel Details

This is a very well maintained, extensively equipped and updated 2006 Hatteras 64 Motoryacht. This vessel has the upgraded engine package with MTU Common Rail 10V-2000 M93 @ 1500hp each. It is also the only 64 Hatteras on the market with Trac Zero Speed Stabilizers which were installed in 2017. The combination of the upgraded power package and the stabilizers provide superior performance and unsurpassed ride quality in its class. The main engines have just over 1200 hours and were just serviced in June of 2019 at which time PLEXI VII also received fresh bottom paint and an exterior detail.

There are upgraded Garmin electronics at both helms (2016) and there is a bow and stern thruster with a Yacht Controller for precise handling around the dock.

The interior is in excellent condition with newer sofa, carpet, mattresses and bedding. A new wine cooler and refrigerator in the salon provide convenient access to refreshments. There is a 42 inch flat screen TV, LED lighting, a large custom sofa with storage beneath the seats and beautiful high gloss Cherry wood bulkheads. The fully equipped galley features under the counter Sub Zero refrigerator/freezer drawers, Microwave/Convection oven, under the counter conventional oven and a dishwasher. The galley also features granite counter tops and Amtico flooring. The large dinette seating is located to port of the galley. The stairway leading to the lower stateroom accommodations is located forward of the galley on the starboard side. There is abundant storage located in the bulkheads of the stairway. Below, the master stateroom is located aft and is full beam with a king size bed, hanging lockers port and starboard and a private head with shower. There is a 20 inch TV and nightstands with drawers. Moving forward there is a separate washer and dryer located in the companionway. The guest stateroom is located to port and has two separate single berths, air conditioner thermostat controls and private access to the day head. The VIP berth is located all the way forward and features a Queen size bed and a private head with shower.

There is an interior stairway which leads from the salon to the fly bridge which features two Pompanette Platinum Series helm chairs. The helm has two Garmin 7616 MFDs, Simrad Auto Pilot and ICOM VHF. There is a four sided enclosure and air conditioning along with a sink, electric grill and ice maker. There is ample built in seating on the port side and a table and chairs. Aft of the enclosure is the davit for an optional dingy and more entertainment area. The owner has added custom stainless railing around this area to make it a more secure and usable area for entertaining.

PLEXI VII is ready to cruise with a recently serviced water maker and two 21.5 KW generators. The large, well designed engine room is clean and organized and there is a large lazarette with ample storage and work space which is air conditioned. There are two bunks located in this area as well.

Below is a partial list of upgrades and updates featured on PLEXI VII:

- * Trac Zero Speed Stabilizers (03-17)
- * Engines Serviced (06-19)
- * Bottom Painted (06-19)
- * Exterior Detail (09-19)
- * New Trim Tab Control Box/Actuator (06-19)
- * Rebuilt Watermaker Pump (09-18)
- * New Wine Cooler (08-18)
- * Installed underwater lights (07-18)
- * New Mach 5 FW Pump (06-19)
- * New Air Conditioning Pumps (2) (03-18)
- * Custom Aft Bridge Railings Install (12-17)
- * New Stern Thruster (electric) (12-17)
- * New port AGM batteries (11-17)
- * New Whisperwall installed lower companionway (10-17)
- * New Salon Sofa (03-17)
- * New Garmin 7600 series Chartplotter and Radar (2016)
- * Interior LED lighting installed (2016)
- * New upholstery on bridge, aft deck, bow and dinette areas (2016)
- * New Seagrass flooring on bridge and aft deck (2016)
- * Custom cushion on flybridge forward of helm (2016)
- * Main deck windows resealed (2016)
- * New batteries (2016)
- * New interior carpets (2015)
- * New mattresses (2015)

The above list is not all inclusive but illustrates the ongoing maintenance and attention that

PLEXI VII receives from her owner.

ASKING \$1,249,000

Salon

- * Two club chairs NEW (2016)
- * Custom sofa with storage NEW (March 2017)
- * Carpeting
- * Whisper Wall headliner REPLACED (2015)
- * Wine/Beverage glass storage cabinet
- * Fluted wood valances and duette blinds
- * Welded and polished stainless steel three panel door to aft deck
- * Fixed frameless windows with tinted safety glass REBEDDED ON EXTERIOR (August 2016)
- * AC duplex outlets
- * Throw pillows
- * DC low level lighting behind salon valances, port and starboard
- * Steps to galley and pilothouse
- * Finished high-gloss Cherry wood bulkheads
- * Entertainment center with flat screen TV, omni-directional antenna, AM/FM surround sound receiver, DVD/CD player and master distribution center
- * Polk stereo speakers
- * Main Electrical Distribution Panel behind cabinet
- * Telephone outlet
- * LED Overhead Lights UPGRADE (2016)
- * AC disbursed through valances
- * Smoke detector
- * HVAC compartment controlled

- * Custom teak and bird's eye maple cocktail table w/storage inside UPGRADE
- * 42" flat screen TV UPGRADE
- * Refrigerator NEW (2018)
- * Wine Chiller NEW (2018)
- * A/V Receiver, Yamaha RXV485 NEW (2018)
- * Satellite TV

Galley

- * High-gloss cherry cabinetry
- * Amtico flooring
- * Whisper Wall headliner REPLACED (2015)
- * Pantograph door to starboard deck with lock
- * Full size conventional oven, Whirlpool UPGRADE
- * Steps to lower companionway
- * Upper level cabinets inboard
- * HVAC compartment controlled
- * Storage locker
- * Granite countertops with sink UPGRADE
- * U-shaped lounge with storage underneath
- * AC distribution panels
- * AC four-burner ceramic cooktop KitchenAid
- * Sub-zero under counter refrigerator and freezer drawers
- * Microwave convection oven, Sharp Carousel
- * Garbage disposal
- * Storage drawers
- * Water level gauge

- * Smoke detector
- * Dishwasher, Fisher/Paykel UPGRADE

Pilothouse

- * Amtico flooring
- * Whisper Wall headliner REPLACED (2015)
- * High-gloss Cherry wood trimmed console with all necessary dimmable switches and instruments
- * Hydraulic power assisted steering
- * Compass with dimmable light
- * Steps to flybridge
- * Intermittent electric windshield wipers/washers with controls
- * Windshield cover for privacy
- * Integrated controls with emergency back-up and engine synchronization
- * Electric fuel gauges
- * AC distribution panel
- * AC switching panel
- * DC electronics panel
- * AC duplex outlets
- * Carbon monoxide detector
- * Polk stereo system
- * Electric defogger
- * Smoke detector

Master Stateroom

- * King berth with upholstered headboard

- * Memory Foam custom mattress with custom bedding and throw pillows (New Mattress May 2016)
- * Upholstered berth base with low level DC lighting (Re-Upholstered May 2016)
- * Carpeting
- * High-gloss Cherry wood cabinets, bulkheads and dressers
- * A/C disbursed through decorative fluted valances
- * Private access to head
- * Full length mirror
- * Carbon monoxide detector
- * 20" LCD TV Sharp
- * Port light, port and starboard
- * Twin cedar-lined lockers with automatic lights
- * Nightstands with drawers
- * Two dressers with drawers, port and starboard
- * AM/FM audio access with local DVD/CD changer with one-touch master universal remote
- * Boston Acoustics loudspeakers
- * AC and DC light fixtures
- * LED dimmable lights UPGRADE (2016)
- * Telephone outlets
- * HVAC compartment controller

Master Head

- * Amtico flooring
- * Mirrored Ceiling UPGRADE
- * Custom wall covering
- * Solid surface countertop with backsplash, sidesplash and sink

- * Baseboards
- * NEW Tile Shower, just re-designed UPGRADE (Feb 2017)
- * Storage cabinet with mirror
- * High-gloss Cherry wood base cabinet with storage
- * Towel bar
- * Freshwater toilet, Headhunter
- * AC air freshener blower
- * LED light fixtures UPGRADE (2016)
- * AC duplex outlet
- * A/C vent
- * DC low level lights under toe kicks

Guest Stateroom Port

- * Memory Foam side by side twin berths with storage under outward berth
- * Whisper Wall headliner
- * Memory foam mattresses, custom bedding and throw pillows (New Mattresses May 2016)
- * High-gloss Cherry cabinetry
- * AC disbursed through fluted valances
- * Cedar-lined hanging locker with door and automatic light
- * Carpeting
- * Nightstand with drawers
- * Fabric headboards
- * Full length mirror
- * NEW whisperwall in companionway (2017)
- * Separate washer/dryer in companionway Whirlpool Thin Twin
- * Aft bulkhead mirror

- * Smoke detector
- * Carbon monoxide detector
- * LED dimmable lights UPGRADE (2016)
- * AC and DC light fixtures
- * AC duplex outlets
- * HVAC compartment controlled
- * 20" LCD TV UPGRADE
- * Private entry to guest head

Guest Head

- * Amtico flooring
- * Custom wall covering
- * Mirrored ceiling UPGRADE
- * Solid surface countertop with sink, backsplash, sidesplash
- * Stall shower with seat and sliding door
- * Automatic sump pump
- * Towel bar
- * High-gloss Cherry cabinetry with storage
- * Storage cabinet with mirror
- * Plexiglas mirror around upper cabinet
- * Freshwater toilet
- * AC air freshener blower
- * LED light fixtures UPGRADE (2016)
- * AC duplex outlet
- * A/C vent
- * DC low level lights under toe kicks

- * Plexi glass mirrored ceiling UPGRADE
- * Dual entry from companionway or guest stateroom

VIP Stateroom

- * Queen sized berth with memory foam mattress and custom bedding (New Mattress 2016) May
- * Carpeting
- * Whisper Wall headliner
- * Custom wall covering
- * Mirrored forward bulkhead
- * Rope storage locker with divider
- * Screened overhead hatch with privacy door
- * LED light fixtures UPGRADE (2016)
- * AC dimmable lights
- * AC duplex outlets
- * DC low level lights under berth
- * HVAC compartment controlled
- * Private access to head
- * High-gloss Cherry cabinetry
- * Upholstered berth base
- * Full length mirror
- * Nightstands, port and starboard
- * Cedar-lined hanging locker with door and automatic light port and starboard
- * Large cedar lined storage area below sleeping berth
- * Audio system control, LCD keypad and Boston loudspeakers
- * Overhead storage cabinets, port and starboard

- * Carbon monoxide detector
- * AC dispersed through fluted wood valances
- * 20" LCD TV UPGRADE

VIP Head

- * Amtico flooring
- * Custom wall covering
- * Mirrored Ceiling UPGRADE
- * Solid surface countertop with sink, backsplash, sidesplash
- * Stall shower with seat and sliding door
- * Automatic sump pump
- * Towel bar
- * High-gloss Cherry cabinetry with storage
- * Storage cabinet with mirror
- * Plexiglas mirror around upper cabinet
- * Freshwater toilet
- * AC air freshener blower
- * LED light fixtures UPGRADE (2016)
- * AC duplex outlet
- * A/C vent
- * DC low level lights under toe kicks

Aft Deck

- * Fiberglass stairwell from aft deck to bridge with storage below
- * Fiberglass access steps with gate to swim platform
- * Fusion stereo with volume control

- * Teak aft deck table
- * Access hatch to utility and engine compartment
- * AC duplex outlet
- * AC lighting in hardtop
- * Hardtop
- * Stainless steel three panel doors to salon
- * Molded bench seating with foam cushions and cover REUPHOLSTERED (2016)
- * "Sea Grass" Floor Covering UPGRADE (2016)
- * Mini drop out clutch and throttle wing controls, port side UPGRADE
- * Welded stainless steel handrails to side decks
- * Two deck chairs
- * Weather covers for bench seating and table

Lazarette

- * Access through deck hatch in floor of aft deck
- * Access to Engine Room
- * Twin Bunks, Sleepable
- * Independent A/C Unit with Controls
- * HUGE Storage Space

Flybridge

- * Molded fiberglass bridge
- * 282 square foot flybridge including 100 sq foot boat deck
- * Stainless steel grab rails
- * Tinted acrylic windshield
- * 4 Sided Isenglass Enclosure with roll-up cutouts throughout UPGRADE

- * Control station with all necessary switches and dimmable lighted instruments
- * Painted aluminum radar arch with masthead light and anchor light
- * Compass with dimmable light
- * Fusion stereo with volume control
- * Refrigerator, storage and molded countertop
- * Electric Grill, Gaggenau, UPGRADE
- * L-shaped lounge with polyfoam cushions, covers and storage below port with access to boat deck REUPHOLSTERED (2016)
- * DC low level lights
- * Hinged door to pilothouse
- * Stairs from pilothouse to bridge
- * Single lever clutch and throttle controls with engine synchronization
- * Hydraulic power assisted steering
- * Neutral interlock switches allowing engine to start in neutral only
- * Flybridge Air Conditioning UPGRADE
- * Two Pompanette Platinum Series helm chairs with covers, footrests and cup holders UPGRADE
- * Flybridge sink UPGRADE
- * "Sea Grass" floor covering UPGRADE (2016)
- * Custom pad for area forward of helm UPGRADE
- * Table and two deck chairs located in L seating area, port side
- * Custom stainless railings added to aft bridge deck for increased safety NEW UPGRADE (2017)
- * Davit TECH 1100 Low profile
- * Liferaft Revere Offshore Commander in canister (certification not current)

Electronics and Navigation Equipment

PILOTHOUSE (LOWER STATION)* 2x Garmin 7612 12" Chartplotters UPGRADE (2016)

* Garmin HD Open Array Radar UPGRADE (2016)

* ICOM VHF Radio

* Furuno RD30 Multi-Function Display

* Simrad AP25 Autopilot

* (2) MTU Electronic Engine Displays

* Hatteras Premium Ships Monitoring System

* MTU Single Lever Electronic Controls

* ACR Searchlight w/Remote Control

* American Bow Thruster Control, Hydraulic

FLYBRIDGE (UPPER HELM)

* 2x Garmin 7616 16" Chartplotters UPGRADE (2016)

* Garmin HD Open Array Radar UPGRADE (2016)

* ICOM VHF Radio ICM 604

* Furuno RD30 Multi-Function Display

* Simrad AP25 Autopilot

* (2) MTU Electronic Engine Displays

* Hatteras Premium Ships Monitoring System

* MTU Single Lever Electronic Controls

* American Bow Thruster Control, Hydraulic

* Vetus Stern Thruster Control, Electric UPGRADE NEW (2017)

* Yacht Controller Remote Docking Control Also Included UPGRADE

* Lenco trim tab controls

* ACR Searchlight control

Electrical System

- * 230V 30 gallon electric water heater
- * Boat cable, tin-coated with insulation
- * Gel/lead acid compatible 240 volt automatic programmable battery charger
- * LED light fixtures UPGRADE (2016)
- * Battery control panel with fuses and isolation switches
- * DC electronics panels with magnetic circuit breakers
- * Systems monitor with programmable logic controller read-out, visual and audible signals for exhaust temperature, alternator, battery voltage, high bilge water, fire warning in engine compartment, fire extinguisher discharge in engine room, AC power loss, smoke detectors, and holding tank 3/4 full monitor
- * Telephone/CATV inlet
- * Telephone and CATV shoreline cord
- * TV omnidirectional antenna
- * Two 24V heavy duty marine batteries mounted in fire retardant fiberglass boxes
- * Automatic battery paralleling system with switch at control console
- * Two 240v 50 amp transformer connected retractable shore cords with over current protection port sport deck
- * AC distribution panels with magnetic circuit breakers
- * AC switching panel with source selector switches, digital volt meter, ammeter, frequency meters, generator start/stop controls, voltage boost tap switch and interlock, selector breakers
- * Navigation lights
- * Ground fault protection on AC receptacles and lighting circuits
- * AC with reverse cycle heating with AC compressors individually controlled by SMX control in each compartment

Engine and Mechanical Equipment

- * Twin MTU 10V2000 M93 1500 hp Common Rail Engines with electrically controlled marine gears, neutral interlocks, exhaust silencers, engine hour meters, alternators, fuel filters and seawater strainers UPGRADE (Port 1220hrs/Strb 1229hrs)

- * Engine Service completed June 2019 UPGRADE
- * Jefferson electric 15kw shore power isolation boost transformers UPGRADE
- * Quick Oil Change system UPGRADE
- * Watermakers INC. 750gpd watermaker, UPGRADE Pump rebuilt Sept 2018
- * Air Conditioner Pumps (2) NEW March 2018
- * FM200 fixed fire extinguishing system for engine compartment with automatic and remote manual controls plus audible and visual discharge signals
- * Fiberglass air intake system for engine room and engine combustion air with baffling and filters
- * Polyethylene water lines
- * AC compressed air system with line and regulator
- * Dockside water inlet with pressure regulating valve and quick disconnect
- * Pressurized 230V AC freshwater pump with central charcoal filter
- * Fiberglass water tanks constructed with bronze fittings
- * Sewage holding tank with 24V DC sewage pump
- * Electric fuel priming pumps, 24V DC engines
- * AC compressors and pumps
- * Discharge sea chests
- * 1" stainless steel steering tie bar with pivoting self aligning ball joint connection
- * Pick up sea chests
- * Painted engine room and bilges with runner deck mat
- * Water manifold with centralized shut-off valve for sinks and showers
- * Pultruded fiberglass rudder shelf with stainless steel tie bar
- * AC fluorescent lights
- * DC lights
- * DC exhaust blower

- * Freshwater fill hose for engines and generator
- * 24V DC bilge and sump pumps
- * Bronze chrome ball valve through-bolted in solid fiberglass on all underwater through-hull fittings, with electrical bonding throughout
- * UL Marine listed fuel filter/water separator, generator
- * Sealed shower sump, one each
- * AC distribution panel
- * DC distribution panels
- * Digital monitoring for main engines in battery panel
- * Start and stop switches and hour meters
- * (2) 21.5 kw freshwater cooled ONAN generators with shock mounts, sound enclosure seawater strainer, remote start, fuel/water separator, hours meter and water lift muffler
UPGRADE
- * Generator hours PORT- 1548 Starboard- 934
- * NEW generator water pump June 2019
- * Electric fuel transfer system with filtration and dry tank protection for pump

Hull and Deck Features

- * Stainless steel hardware
- * Four polished stainless steel spring line cleats
- * Bow and stern stainless cleats
- * Stainless steel rails on bow
- * Stainless steel trim tabs
- * Deck plates for fuel and water fills and waste pump out
- * Heavy duty bronze engine couplings
- * Engine and generator exhaust exits through hull side near transom
- * Fiberglass stringers

- * Dual prop bow thruster
- * Walk around side decks
- * Black fenders - Large inflatable TaylorMade UPGRADE
- * Alloy 22 high-strength prop shafts
- * Windlass 1700lb with 25 feet of stainless steel chain
- * Zincs on rudder and shafts
- * Dual air horns
- * Fog bell
- * Portable dry chem fire extinguisher
- * Sunpad on bow deck REUPHOLSTERED (2016)
- * Underwater lights in transom UPGRADE
- * Hand held shower in cockpit UPGRADE
- * Fresh water washdown on fore deck UPGRADE
- * Sea ladder with storage brackets UPGRADE
- * Sea Stairs with storage brackets UPGRADE
- * Bottom Painted June 2019 UPGRADE
- * Exterior Detailed Sept 2019 UPGRADE

Исключения

При продаже яхты исключаются личные вещи владельца.

Отказ от ответственности

Компания предоставляет описание судна или яхты добросовестно, но не может гарантировать точность этой информации, а также не ручается за техническое состояние. Покупатель должен проинструктировать своих агентов или оценщиков исследовать представленную информацию более подробно, по собственному желанию. Продажа судна или яхты, изменение цены или снятие с продажи будет происходить без предварительного уведомления.

ФОТОГРАФИИ

64 Hatt Port Profile 11



64 Hatt Profile 2



64 Hatt Strb Profile 1



64 Hatt Bow Profile 2



64 Hatt Bow Profile 5



64 Hatt Port Profile 4



64 Hatt Bow Profile 10



DSC_5991



DSC_5912



DSC_5913



DSC_5915



DSC_5916



DSC_5917



DSC_5918



DSC_5919



DSC_5920



DSC_5921



DSC_5922



DSC_5924



DSC_5925



DSC_5926



DSC_5927



DSC_5928



DSC_5929



64 Hatt Dinette 25

DSC_5930



64 Hatt Dinette 26



DSC_5928



64 Hatt Galley 24



DSC_5931



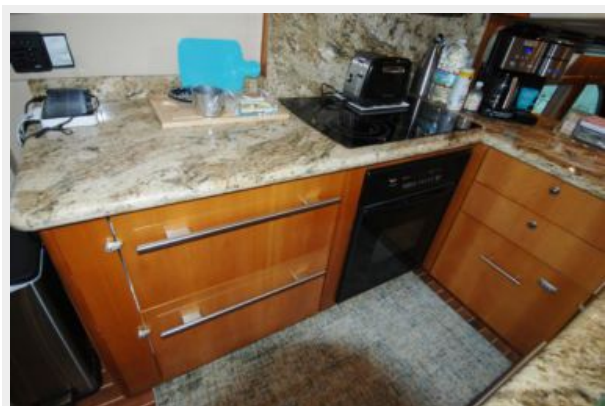
64 Hatt Galley 22



64 Hatt Galley 23



DSC_5932



DSC_5933



DSC_5934



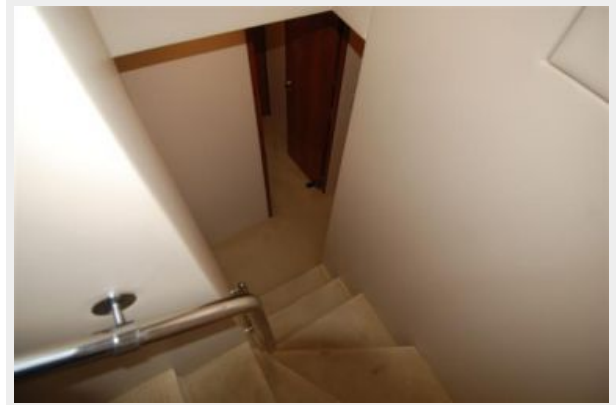
DSC_5935



DSC_5936



DSC_5937



64 Hatt Washer-Dry 45



DSC_5938



DSC_5939



DSC_5940



DSC_5941



DSC_5942



DSC_5943



DSC_5944



DSC_5945



DSC_5946



DSC_5947



DSC_5948



DSC_5949



DSC_5950



DSC_5951



DSC_5952



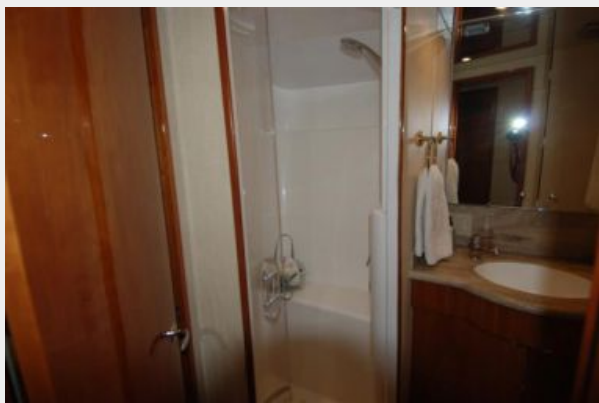
DSC_5953



DSC_5954



DSC_5955



DSC_5956



DSC_5957



DSC_5958



DSC_5959



DSC_5960



DSC_5961



DSC_5962



DSC_5963



DSC_5964



DSC_5965



DSC_5966



DSC_5967



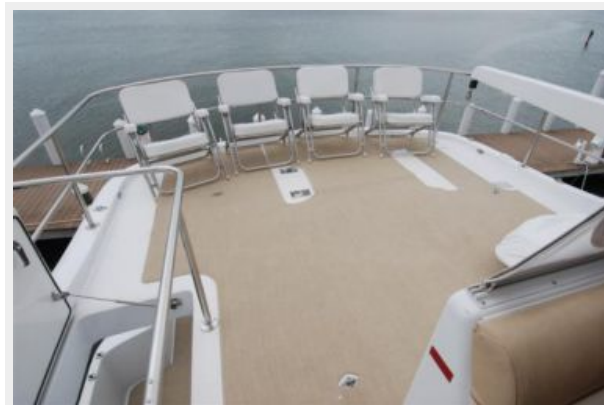
DSC_5968



DSC_5969



DSC_5970



DSC_5971



DSC_5972



DSC_5973



DSC_5974



64 Hatt Bridge 46



64 Hatt Bridge 47



64 Hatt Bridge 51



DSC_5976



DSC_5977



DSC_5979



DSC_5982



DSC_5983



DSC_5978



DSC_5981



DSC_5992



DSC_5988



DSC_5989



DSC_5989



DSC_5990



64 Hatt Aft Deck 12



DSC_5993



DSC_5994



DSC_5995



DSC_5996



DSC_5997



DSC_5998



DSC_5999



DSC_6000



DSC_6002



DSC_6003



DSC_6004



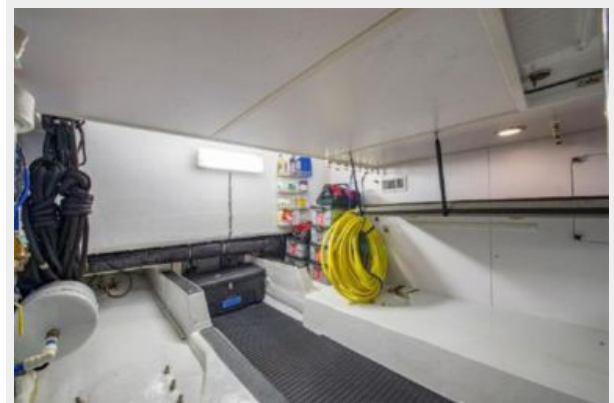
64 Hatt Laz 67



64 Hatt Laz 68



64 Hatt Laz 73



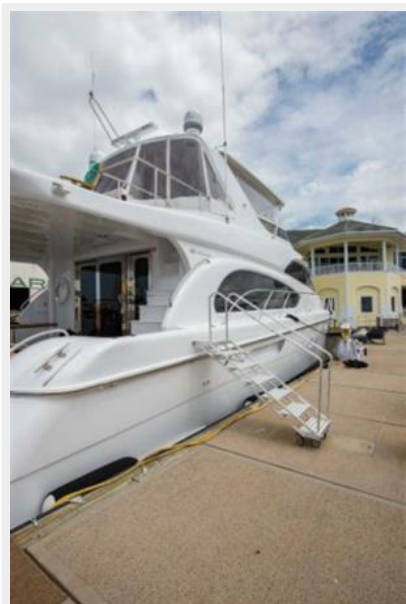
64 Hatt Laz69



DSC_5986



64 Hatt Ladder 84



64 Hatt Ladder 85



64 Hatt Bow face Aft 62



64 Hatt Bow 61



64 Hatt Port Bow Profile 3



КОНТАКТЫ

Андрей Шестаков (Andrey Shestakov) – ведущий яхтенный брокер отдела продаж яхт и судов компании Shestakov Yacht Sales Inc. Официальный представитель Shestakov Yacht Sales Inc. для русскоговорящих клиентов в центральном офисе компании в Майами/Форт Лодердейл/Флорида/США.

Контактная информация

Email: andrey@shestakovyachtsales.com

Web: shestakovyachtsales.com

Телефоны

Краснодарский край: **+7(918)465-66-44**

США, Майами, Флорида: **+1(954)274-4435**

Время работы

Понедельник – Суббота: **9:00 - 21:00**
EDT

Воскресенье: **Закрето**

Адрес



Harbour Towne Marina, 850 NE 3rd St,
STE 213, Dania, FL 33004