

## LADY BULL — HORIZON



**Builder:** HORIZON

**Year Built:** 2001

**Model:** Motor Yacht

**Price:** PRICE ON APPLICATION

**Location:** United States

**LOA:** 82' 0" (24.99m)

**Beam:** 20' 0" (6.10m)

**Max Draft:** 6' 8" (2.03m)

**Cruise Speed:** 15 Kts. (17 MPH)

**Max Speed:** 20 Kts. (23 MPH)

Our experienced yacht broker, Andrey Shestakov, will help you choose and buy a yacht that best suits your needs **LADY BULL — HORIZON** from our catalogue. Presently, at Shestakov Yacht Sales Inc., we have a wide variety of yachts available on our sale's list. We also work in close contact with all the big yacht manufacturers from all over the world.

If you would like to buy a yacht **LADY BULL — HORIZON** or would like help answering any questions concerning purchasing, selling or chartering a yacht, please call **+1(954)274-4435**

# TABLE OF CONTENTS

TABLE OF CONTENTS	2
SPECIFICATIONS	7
Overview	7
Basic Information	7
Dimensions	7
Speed, Capacities and Weight	7
Accommodations	8
Hull and Deck Information	8
Engine Information	8
DETAILED INFORMATION	9
Salon	9
Galley / Country Kitchen	9
Master Stateroom	10
VIP Stateroom	11
Twin Guest Stateroom	11
Companionway	12
Crew Quarters	12
Captain's Cabin	12
Flybridge	12
Crew Cabin	13
Bridge Electronics	13
Aft Deck	14
Swim Platform	14
Construction Details and Deck Equipment	14
Engine / Mechanical Equipment	15
Lazarette	17
Electric System	17
Utility Room	17

Upgrades / Improvements	17
Comments	18
Disclaimer	18
Exclusions	19
Disclaimer	19
PHOTOS	20
Salon Looking Forward	20
Salon Port Forward	20
Salon Looking Forward	20
Salon Desk	20
Salon Looking Aft	20
Salon Looking Aft	20
Salon Looking Starboard TV Up	21
Salon Stbd Dish Storage	21
Salon Stbd. Side Wine Cooler and Wine Storage	21
Salon Stbd. Printer and Stereo Equipment	21
Port Side Salon Wet Bar and Refrigerator and Bottle Storage	21
Wet Bar	21
Salon TV Up	22
Galley and Dinette Looking Forward	22
Dinette	22
Galley	22
Galley	22
Galley	22
Stairs to Flybridge	23
Galley	23
Galley Dinette	23
Day Head	23
Down to Staterooms	23

Forward Stairwell	23
Twin Stateroom	24
Twin Stateroom	24
Twin Head	24
Twin Shower	24
Twin Stateroom	24
Forward VIP Stateroom	24
Forward VIP	25
Forward VIP	25
VIP	25
VIP Head	25
VIP Shower	25
Master Stateroom	25
Master Stateroom	26
Master Stateroom	26
Master Stateroom	26
Master Stateroom	26
Master Stateroom	26
Port Head Master	26
His and Hers Heads	27
Master Shower between His and Hers	27
His Head	27
Down to Crew Aft	27
Twin Crew Berths	27
Crew	28
Crew Area	28
Crew Head	28
Crew Double or 4th Stateroom	28
Crew	28

Crew Area Aft	28
Crew Aft Looking Stbd.	29
Crew Area Looking Port	29
Enclosed Air Conditioned Flybridge	29
Helm with Solid Window	29
Helm	29
Flybridge Looking Aft	29
Flybridge Seating	30
Flybridge Seating	30
Port Side Flybridge Refrigerator and Ice maker	30
Flybridge	30
Boat Deck with SS Grill	30
Grill	30
Tender	31
Davit	31
Aft Deck	31
Aft Deck Freezer	31
Aft Deck Freezer Door Open	31
Aft Deck Freezer Door Closed	32
Port Walkway	32
Sun Pad with Three Position Backs	32
Dual Anchors and Windless	32
Bow Seating	32
Aft Deck Remote Controls	33
Engine Room Looking Forward	33
Engine Room	33
Engine Room	33
Lighted Fuel Sight Gauge Port and Stbd.	34
Clear Plexi Covers Both Generators	34

Layout	34
Engine Room Aft	34
CONTACTS	35
Contact details	35
Telephones	35
Office hours	35
Address	35

# SPECIFICATIONS

---

## Overview

---

Custom built with impeccable lineage, "**LADY BULL's**" interior/exterior composition, use of quality materials, incomparable joinery workmanship, thoughtful and functional layout, superior electronics and AV packages, exclusive top choice fabrics, accessories, and soft goods will appeal to the discriminating yachtsman. High gloss cherry wood cabinetry is featured throughout the yacht. There are protective, Sunbrella color-coordinated carpet runners throughout. The full walk-around main deck provides easy access for guests and crew.

## Basic Information

---

**Category:** Motor Yacht

**Sub Category:** Flybridge

**Model Year:** 2001

**Year Built:** 2001

**Refit Year:** 2017

**Country:** United States

**Fly Bridge:** Yes

## Dimensions

---

**LOA:** 82' 0" (24.99m)

**Beam:** 20' 0" (6.10m)

**Max Draft:** 6' 8" (2.03m)

## Speed, Capacities and Weight

---

**Cruise Speed:** 15 Kts. (17 MPH)

**Cruise Speed Range:** 450

**Max Speed:** 20 Kts. (23 MPH)

**Gross Tonnage:** 116 Pounds

**Water Capacity:** 420 Gallons

**Holding Tank:** 200 Gallons

**Fuel Capacity:** 2250 Gallons

## Accommodations

Total Cabins: 3	Sleeps: 6
Total Heads: 5	Captain Cabin: True
Crew Cabin: 2	Crew Berths: 3

## Hull and Deck Information

Hull Material: Fiberglass	Deck Material: Teak and Fiberglass
Hull Configuration: Modified V-Hull	Hull Designer: Horizon

## Engine Information

Engines: 2	Manufacturer: Caterpillar
Model: 3412E	Engine Type: Inboard
Fuel Type: Diesel	



---

## DETAILED INFORMATION

---

### Salon

---

Entering the Main Salon from the 9-ft. aft deck, through the Trend sliding glass door, the 17-ft. long Salon is sophisticated, stylish, open, airy and extremely well arranged. The forward bulkhead is mirrored. Beneath this mirror, continuing along the port side of the Salon, is a custom-designed radius corner built-in, 10-ft. sofa with storage beneath. This sofa has a small, incorporated end table with two opening drawers on each end. A 4-ft. dual pedestal cherry wood coffee table and one leather, swivel-reclining chair complete the space.

Aft of the sofa are built-in cherry wood cabinets housing a granite topped wet bar with stainless sink, a liquor cabinet below and built-in refrigerator.

The entire length of the Salon on the starboard side is an integrated cherry cabinet that is essential to the room without overpowering it. Beginning forward on the bulkhead is one 16-bottle U-Line wine cooler and built-in wine storage drawers for 48 bottles. Just aft in the lower section is floored stowage in two cabinets for tableware and stemware. This is followed by another section of the cabinet housing a printer and the audio/visual equipment. A custom-built desk with two drawers and pull-out keyboard undershelf completes the space.

There is a 42" Samsung Smart TV with sound bar on an auto-electric high/low lift. The entertainment center encompasses one cabinet aft with components consisting of the following:

- DirecTV receiver
- Denon AV Receiver
- Sony DVD player
- RTI Universal Remote Control

The staircase leading to the lower accommodations and Engine Room is to port. The Salon appointments are all of cherry wood cabinetry which is consistent throughout the yacht. All port and starboard windows have adjustable, soft shade window blinds. The aft Salon door has a full-length curtain and screen door.

The two-tiered relief "crown molding" trimmed in hard cherry with radius curves, surrounds the space. There are 5 stereo speakers and 9 LED lights. The ambiance is further enhanced by large side windows and assorted combinations of upgraded LED lighting; overhead and around the perimeter. Overhead is a Horizon trademark Starlite fixture trimmed in cherry wood and encompassing the room with diffused lighting with the use of six LED recessed lights. Indirect lighting is installed under valances and under sofas.

### Galley / Country Kitchen

---

The Galley is up two steps from the Salon and features a large, country kitchen-style with black

Galaxy granite countertops, top-of-the-line appliances, and teak and holly sole. A U-shaped dining area with seating for 8 faces the Galley. Port and starboard are watertight, aircraft style, side entry doors.

All granite, wrap-around countertops in the Galley are over 4 opening drawers. There are 6 large, overhead cabinets plus the following:

- Pull-out pantry drawer
- 3 x cabinets for pot/pans storage
- Double stainless-steel sink by Blanco
- Sub-Zero refrigerator with 2 freezer drawers below
- GE Profile 4-burner cooktop
- Bosch Self-Cleaning oven
- GE Profile Performance Triton tri-clean dishwasher
- Broan trash compactor
- 15" Samsung TV w/DirecTV receiver
- (8) Overhead cupboards supply an abundance of storage
- (7) Overhead LED lights showcase the teak and holly floor
- Additional storage beneath and forward of the dining settee

The Country Kitchen is forward of the Galley. The 15-ft. U-shaped leather dining settee sits atop a 10-inch raised platform at deck level. The cherry wood table is 30" x 60" and surrounded by tempered glass windows which allow vista views while cruising or stationary, and offering comfortable seating for eight. Six LED overhead lights illuminate the space. Teak window treatments and a three-section windshield, wit custom blinds, create a bright and cheery area. The port and starboard aircraft-style doors access the deck.

A Day Head is to starboard with black Galaxy granite floor with gold inlay, granite vanity top, stainless steel sink, Grohe faucets, 2 opening cabinets, 2 drawers, 2 overhead lights, towel rack, teak blinds, black Dometic toilet and independent air conditioning. Aft of the Day Head is an eight-step staircase to the Bridge Deck.

The ship's main AC and DC electrical panels are on the starboard side, just forward of the Day Head, and is extremely accessible for ease of operation or service.

A seven-step staircase wit banister leads down the starboard side to the owner and guest accommodations, which are carpeted and include the protective Sunbrella coordinated runners.

---

## Master Stateroom

---

The focal point in the Master Stateroom is the king-sized centerline bed with storage beneath and side access.

Up-lit port and starboard sconces are affixed on a mirror behind the bed which enhance the upholstered headboard. Featured are luxury bed coverings and pillow shams. There are two

cherry nightstands with two drawers bordering the bed. The ceiling above the bed is finished in cherry wood framed mirrors and recessed lighting. There is ample storage plus drawers beneath the berth. A vanity with mirrored makeup area is flanked by 4 opening drawers and storage cabinets, positioned on the starboard side, as well as a walk-in closet with built-in drawer storage. A similar, but smaller, closet is to port offering ample storage space.

At the forward bulkhead is the entertainment center featuring a flush mounted 27" Sony flat screen TV, DirecTV receiver, Harmon Kardon receiver and Sony DVD player.

A sitting area with settee and storage stand with 3 drawers is to port. Four opening port lites, two port and two starboard, are also featured in the Master Stateroom.

Fully aft are the His and Hers heads centered by a large shower with dual Grohe shower heads, a built-in seat and soap/shampoo racks. The shower floor is black granite with gold inlay accents. Each head, which are mirror images, feature granite topped vanities with 2 drawers and 2 cabinets topped by a full-width mirror, 4 side-opening cabinets, black Dometic toilet, towel bars and accessories, opening port lite and 2 overhead lights.

## VIP Stateroom

---

All the way forward is the well-appointed VIP Stateroom with centerline queen bed with bed covering and coordinating shams/pillows. A beveled mirror is inset and positioned on the forward bulkhead and is a stunning backdrop for the crescent-shaped padded headboard. Tasteful up-lit sconces border the berth. Full cherry wood interior paneling highlights a solid cherry wood soffit. To port, forward, is a small cabinet housing the Glendinning Cablemaster. Port and starboard cabinets with shelves contain stereo speakers. Equipment and general storage is beneath the queen berth with dual access from above or via underneath drawers. The entertainment center houses a 24" Samsung TV, DirecTV receiver, above 4 drawers. There is a spacious ensuite head with large shower, granite topped vanity, Grohe fixtures and Dometic toilet.

There is also a 4-ft. granite topped cabinet with 2 cabinet doors on the inboard side of the room.

## Twin Guest Stateroom

---

Commencing aft of the VIP to the port side is a twin berth stateroom outfitted with cherry wood paneling, an upholstered valance/mirror headboard combination, a 2-drawer nightstand between the berths, 2 drawers beneath the berths, a large cedar-lined hanging locker and two opening port lites.

The audio/visual equipment consists of a Samsung 15" TV, DirecTV receiver and Niles flush mounted stereo speakers. Also included are 5 overhead LED lights.

The large ensuite Head showcases a granite topped vanity with storage below, shower, Grohe

fixtures, an opening mirrored medicine cabinet, opening port lites, black Dometic toilet and separate air conditioner.

---

## Companionway

---

Next aft, in the companionway, is a 5-shelf utility closet housing the guest laundry, with GE Spacemaker Laundry Center. The companionway provides entry to all three staterooms.

---

## Crew Quarters

---

The aft section of the boat is entered via a portside staircase situated in the port aft section of the Salon. Perelli floors underscore the lower companionway. A head with spacious stall shower can be found on the starboard side and features a granite vanity with porcelain sink and Grohe faucets, a double door medicine cabinet and opening port lite. The black tile with inlaid gold flooring continues into the shower stall with Grohe fixtures and seat.

---

## Captain's Cabin

---

The Captain's Cabin (or alternate guest cabin) features a double berth. Other notable features include a vanity with 4 drawers, hanging locker, 6 opening storage cupboards with shelves, 2 opening port lites, 5 overhead LED lights, Samsung 24" TV with DirecTV receiver, stereo speakers and controls and rope lighting. There are independent air conditioning controls for the Captain's Cabin and Crew Cabin.

---

## Flybridge

---

The Flybridge is accessed by an interior 8-step stairway or a nine-step curved exterior staircase from the aft deck. The bridge enjoys an upgraded, custom fiberglass hardtop and is fully enclosed through use of EZ2CY covers with two opening panels and an opening aft section. The Flybridge is fully air-conditioned with ample capacity. The forward windshield is custom glass with wiper.

On the starboard side of the Flybridge is a large, U-shaped couch with decorative cushions with stowage beneath, bordering a hi-lo Corian topped table on a double pedestal.

There is a Samsung 24" TV and DirecTV receiver on the port side and a custom cabinet with matching Corian top. There is a built-in Scotsman icemaker and two Viking two-drawer refrigerators.

The aft Flybridge contains a Nautical Structures E-Z 1500 hydraulic davit. The 2001 14' Rendova received new tubes in 2018. The aft Flybridge/sundeck area features four chairs with two cocktail tables and one umbrella. There is also a custom storage cabinet with stainless steel

gas grill.

The Flybridge features the following additional equipment:

- Non-skid decks
- Custom built windshield with variable speed control windshield wiper
- Textiline windshield cover set
- Instrument console with cover
- Stainless steel framed glass sliding hatch opens to steps leading to the Galley
- Oversized drains with strainers on each corner of the bridge deck with internal overboard drains
- Flagstaff on back of bridge
- (2) Stidd 500XL helms seats with canvas covers
- Destroyer steering wheel
- Fusion AM/FM/Bluetooth Stereo

---

## Crew Cabin

To port is the Crew Cabin boasting under/over berths, cherry wood paneling, a 3-drawer vanity with tray table, hanging locker, stowage cabinet above the lower berth and 2-drawer stowage beneath the lower berth. The top berth may be hinged down, revamping the room for single occupancy or creating a couch for sitting room/study. There are two opening port lites, 4 recessed overhead lights, Samsung 15" TV with DirecTV receiver, stereo speakers and controls, and accent rope lighting.

---

## Bridge Electronics

- (1) Naiad MultiSEA II Stabilizer control panel
- (1) IRIS MCC-516 Multi-camera controller
- (1) 3-tank Tank Tender Gauge
- (1) FLIR camera controller model N-625XP NTSC, with infrared and night vision
- (1) High bilge water alarm panel with alarm test button
- (1) Exalto wiper control panel
- (1) American Bow Thruster bow & stern control lever panel
- (1) Bennett Trim tab control panel
- (1) Furuno hailer/auto fog signal unit
- (1) Danforth compass
- (2) Spotlight control panels
- (2) ICOM Command MIC VHF radios
- (5) Garmin GHC 20 multi-function displays
- (3) Garmin Model 8215 15" glass helm touch screen displays, black box to display radar, any of 3 types of sonar, charts, weather, cameras, Caterpillar read outs and Fusion A/V control

- (2) Garmin radars, 72-mile and 48-mile, making radar system redundant
- (1) Garmin WIFI network that allows 2 of the Garmin 8215 displays to be displayed/controlled via iPhones or iPads
- (2) Caterpillar LCD engine gauge displays
- Sirius Weather

---

## Aft Deck

There are six entrances aboard “LADY BULL”; you may enter forward from port or starboard wing gates on the walk-around decks, or from port and starboard gates located at the expansive aft deck, or via port and starboard steps from the swim platform. The aft deck covered area is 13-ft. x 19-ft. and has plenty of walkaround room, even with an 8-ft. long cherry wood table (recently refinished) that easily accommodates 8-10 guests, supported by an aft bench seat (with storage beneath) and 4 free-standing wooden, ladderback chairs with canvas covers. There is also a complete canvas cover for the bench seat and cushions which were recently updated.

On the starboard side is a molded-in cabinet housing a chest freezer. To port side is the 9-step staircase allowing easy access to the flybridge with a stainless steel and framed glass sliding hatch for aft deck weather protection. Above the freezer is a custom, drop-down Samsung 24” TV and DirecTV receiver.

Above the freezer is a cabinet housing the stereo volume control, double 110V outlet, and the switches for the underwater transom lights with timer, (8) dimmable aft deck overhead LED lights, (10) dimmable side deck overhead LED lights and the staircase safety lights. There are two port and starboard Maxwell 2200 electric controlled warping winches along with two 18” stainless steel cleats and hawse eyes. There is a 6” teak cap rail with a very substantial 2” stainless steel rail completely around the main deck, fiberglass rub rail with stainless steel cap on low aft hull sides and stainless steel handrails on sides of the aft deck stairs. A Textiline sunshade spans the Flybridge to the aft rail.

---

## Swim Platform

This deck has a 7-ft. in-deck storage locker, (3) 2” stainless steel removable hoop rails and (2) 18” mooring cleats. This swim platform also contains a concealed swimming ladder in folding storage well under the deck. Built-in shower with hot/cold water above the platform and (2) zinc anodes on the transom. There are (2) bulkhead mounted cabinets, one for dry storage and the other with fresh and water faucets and shower attachments.

The aircraft-style watertight door on centerline of the Euro-transom affords entry to the lazarette, crew area and Engine Room.

---

## Construction Details and Deck Equipment

- One-piece hull lamination with V-shaped keel
- Solid fiberglass hull
- High density foam cored construction above water line
- Stringers with high density foam coring
- Deck and superstructure foam cored reinforced for strength
- Interior structural components all properly bonded to hull
- Strong collision bulkhead structure for extra safety
- High bulwark with flush mounted deck lights; (4) bulwark side doors for boarding
- (2) Stainless steel rollers and chain stopper for anchor chain
- (2) Vertical hydraulic Maxwell VWC3500 anchor winches
- (2) Stainless steel 175 lb. (80 kg) anchors – Ultra
- (2) High tensile 250-ft. anchor chains
- (2) 18" cleats and hawse eyes
- (4) Midship cleats
- Freshwater anchor chain wash down
- Heavy duty stainless steel 2" handrail
- 2" stainless flagpole on bow rail
- Forward deck storage locker for fenders and lines
- Forward deck seat
- Sunbathing cushion on forward deck with drink holders (updated cushions 2017)
- Heavy duty 316# stainless cleats and fairlead with rollers
- 100' amp service – fore and aft
- Stainless steel port holes
- Stainless steel storm covers on all port lights
- Dockside freshwater inlet
- (1) Marquipt boarding ladder
- (2) Marquipt boarding stairs
- Sunbrella canvas covers for bridge, helm seats, aft deck seat, windshield and sun pad
- Forward cushion and seat
- Sunbrella exterior cushions
- (3) Underwater LED lights-white
- Stern docking lights

---

## Engine / Mechanical Equipment

---

- Twin 3412E Caterpillar 1400 HP diesel engines with reduction gears
- Main Engine hours: Port: 3530 Stbd.: 3590 (September 2019)
- Additional aft deck controls (engine gear, thruster) wired remote
- CAT Vision System monitor system
- Mathers engine controls replacing standard Hynautic controls
- Naiad 254 Stabilizers – upgraded 7 sq. ft. fins and MultiSEA flybridge control
- (2) High volume AC freshwater pressure pumps – redundant
- Upgraded 5-blade propellers + spare set

- Engine block heaters, lightning protection system
- Mathers chrome plated control head
- FCI Aquamiser + 1200 GPD water maker w/auto freshwater flush
- Upgraded house water pumps with anti-siphon back flush
- Walker Fuelseps for mains and generators
- Walker Airseps
- Hydraulic stern thruster
- Hydraulic bow thruster
- (6) Racor 1000 fuel filters/water separator – each engine
- Racor filters on generator(s)
- Trident hump house for engine exhaust
- Sea strainers
- Stainless steel shafts
- Main and intermediate bronze struts with backing plates
- Shaft and rudder packing glands with maintenance free tide strong seals
- Exhaust system for engines with mufflers
- Stainless steel emergency tiller
- Engine alarm system for low oil and high-water temperature
- (4) Engine compartments blowers – (2) AC and (2) DC
- Engine Room de-mister filters
- Fireboy automatic/manual fire extinguishers
- Air conditioning – (3) chillers (1 x 5-ton chiller and 2 x 4-ton chillers w/soft starts and electronic control (2 chillers replaced in 2018)
- Freshwater hose to filling engine and generator expansion tanks
- Aluminum fuel tanks with sight and electric gauges
- (5) Electric Rule bilge pumps
- Highwater bilge alarm
- Bilges exhaust ventilation
- Sump pumps for showers
- 200 gallon holding tank with macerator pump
- “Y” valve for holding tank dockside pump out
- Holding tank level indicator
- Marine grade lines for freshwater system
- (2) Raritan 20-gallon water heaters
- Closed circuit TV monitoring system with 8 cameras
- Heavy duty Engine Room door
- Spacious Engine Room
- Double sound and heat insulated material with foam and lead combination
- Stainless steel overhead grabrail on each side of engines
- AC florescent and DC dome lights – LED
- Main engine mounts – upgraded and replaced 2016
- Custom exhaust diverter strakes under hull



---

## Lazarette

---

The lazarette allows access to the rudder post, 20 gal. Raritan hot water heater, Power Converter Center, water pressure accumulator tank, Hynautic power steering system, aft Glendinning Cablemaster, Acme transformer and underwater lighting system.

---

## Electric System

---

- (2) Northern Lights 32 kW (60 Hz) generators with sound shields (custom clear panel with LED lighting)
- Racor fuel filters and Walker Fuelseps
- Generator hours: Port: 4765 Stbd. 4468
- (4) 8 D batteries for gensets
- Fiberglass water/exhaust separator for gensets
- 110- or 220-volt electrical supply from generator or shore power
- (2) Glendinning shore power Cable Masters 50 amp with 75-ft. cable each
- Shore power connection, 50 amp to isolation transformer
- ACME ISO boost for shore power supply
- Select switch for AC power supply
- Color-coded wiring for easy identification
- Magnum 4 kW inverter/120-amp battery charger
- (2) Pro Mariner battery chargers
- Guest battery vapor proof battery switch
- (4) Engine start up batteries
- (8) 200 AH gel cell batteries for ship's service power
- All batteries enclosed with boxes and covers

---

## Utility Room

---

Next aft is the large utility area housing the crew mess with a stainless sink and back-up GE Spacemaker Laundry Center (washer/dryer). There is also a Sub-Zero refrigerator and Sub-Zero freezer behind cabinet doors. There is an ample amount of storage space.

---

## Upgrades / Improvements

---

- Replacement of all navigational electronics with high-end equipment
- Installation of FLIR infrared and night vision camera system
- Upgraded water maker
- Upgraded stabilizer system – 7 sq. ft. fins
- Installation of CCTV system with multiple cameras
- Head vacuum system overhauled
- All A/C air handlers replaced or rebuilt (2014)

- All windows re-caulked
- KVH Satellite system with HD7 Tri-America LMB and DirecTV
- KVH Mini-SAT
- New anchors installed
- Stern cleats
- Custom refrigerator cabinet on Flybridge – (2) Viking 2-drawer refrigerator and Scotsman 80 lb./day icemaker
- Custom desk in Salon
- New tabletop – bridge
- Custom wine storage drawers added in Salon
- Recent EZ2CY glass and canvas wrap-around to new windshield, enclosed Flybridge
- V-KOOL on forward Galley windows and custom shades
- New main engine mounts (2016)
- Expanded custom WIFI ship's network with 3 access points:
- Cradle Point 4G cellular router with 2 external antennae
- Ericsson 3G cellular router
- Wave WIFI Rogue WIFI booster
- Kerio Firewall/Router/VPN
- Flybridge (Aft Sundeck) custom storage cabinet with stainless steel gas grill
- New tubes on dinghy 2018
- Backrest added to sun lounge on Foredeck
- Forward hot water replaced 2019
- Bottom painted and props reconditioned July 2019
- Head exchanges done 2018

---

## Comments

Originally built for an extremely avid boater “**LADY BULL**” is very well laid out for either an owner/operator or someone with full-time crew. She has benefited from three owners who have done nothing but care for her. She has been painted and received all new electronics in the last couple of years. Her current owner, after building her, selling her, and having a few boats in between, decided to purchase her again as she fit all the parameters as to what they were looking for. “**LADY BULL**” will not disappoint!

---

## Disclaimer

Specifications are provided for informational purposes only. Data was obtained from sources believed reliable but is not guaranteed by owner or brokers. Buyer assumes responsibility to verify all speeds, capacities, consumption's and other measurements contained herein and otherwise provided and agrees to instruct his agents to confirm such details prior to purchase. Vessel is subject to prior sale, price and inventory changes and withdrawal from market without notice.

## Exclusions

---

Owner's personal belongings.

## Disclaimer

---

The Company offers the details of this vessel or yacht in good faith but cannot guarantee or warrant the accuracy of this information nor warrant the condition of the vessel. A buyer should instruct his representatives, agents, or his surveyors, to investigate such details as the buyer desires validated. This vessel or yacht is offered subject to prior sale, price change, or withdrawal without notice.

# PHOTOS

## Salon Looking Forward



## Salon Port Forward



## Salon Looking Forward



## Salon Desk



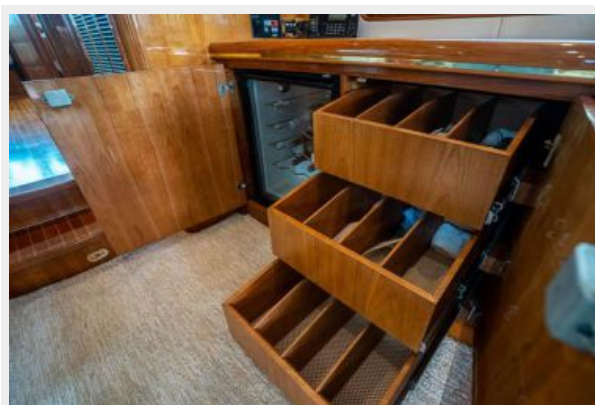
## Salon Looking Aft



## Salon Looking Aft





**Salon Looking Starboard TV Up****Salon Stbd Dish Storage****Salon Stbd. Printer and Stereo Equipment****Salon Stbd. Side Wine Cooler and Wine Storage****Port Side Salon Wet Bar and Refrigerator and Bottle Storage****Wet Bar**

**Salon TV Up****Galley and Dinette Looking Forward****Dinette****Galley****Galley****Galley**



**Galley****Stairs to Flybridge****Galley Dinette****Day Head****Down to Staterooms****Forward Stairwell**

**Twin Stateroom**



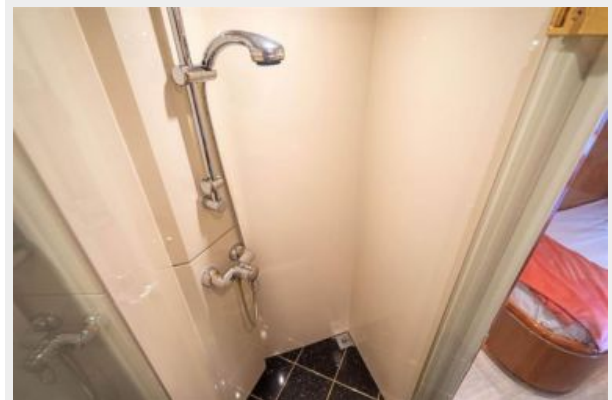
**Twin Stateroom**



**Twin Head**



**Twin Shower**



**Twin Stateroom**



**Forward VIP Stateroom**





**Forward VIP**



**Forward VIP**



**VIP**



**VIP Head**



**VIP Shower**



**Master Stateroom**



**Master Stateroom**



**Master Stateroom**



**Master Stateroom**



**Master Stateroom**



**Master Stateroom**



**Port Head Master**





**His and Hers Heads**



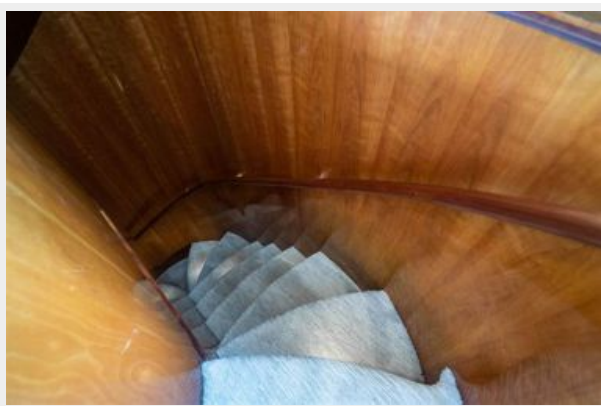
**Master Shower between His and Hers**



**His Head**

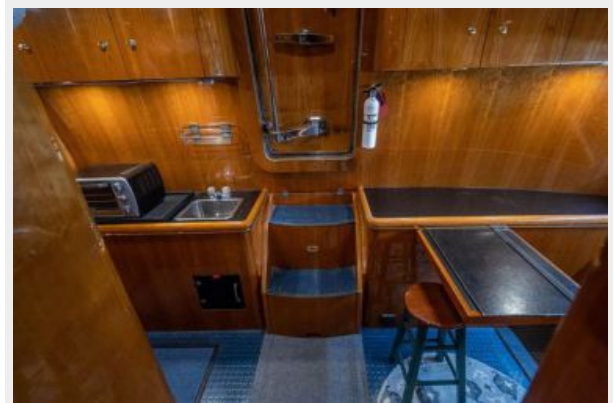


**Down to Crew Aft**



**Twin Crew Berths**



**Crew****Crew Area****Crew Head****Crew Double or 4th Stateroom****Crew****Crew Area Aft**



**Crew Aft Looking Stbd.****Crew Area Looking Port****Enclosed Air Conditioned Flybridge****Helm with Solid Window****Helm****Flybridge Looking Aft**

**Flybridge Seating****Flybridge Seating****Port Side Flybridge Refrigerator and Ice maker****Flybridge****Boat Deck with SS Grill****Grill**



**Tender****Davit****Aft Deck****Aft Deck Freezer****Aft Deck Freezer Door Open**

**Aft Deck Freezer Door Closed****Port Walkway****Sun Pad with Three Position Backs****Dual Anchors and Windless****Bow Seating**



### Aft Deck Remote Controls



### Engine Room Looking Forward



### Engine Room



### Engine Room



## Lighted Fuel Sight Gauge Port and Stbd.

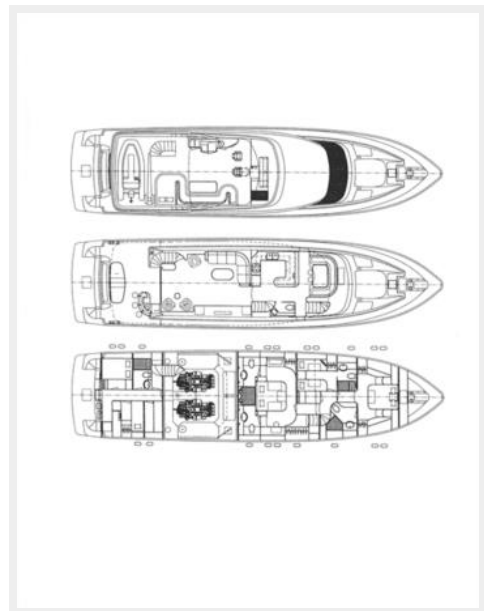


## Clear Plexi Covers Both Generators



## Layout

### Engine Room Aft



# CONTACTS

---

Andrey Shestakov, leading yacht broker of the sales department of Shestakov Yacht Sales Inc. Shestakov Yacht Sales Inc., the official representative of the Miami/Fort Lauderdale FL headquarters.

## Contact details

---

Email:  
**andrey@shestakovyachtsales.com**

Web: [shestakovyachtsales.com/en/](http://shestakovyachtsales.com/en/)

## Telephones

---

USA: **+1(954)274-4435**

## Office hours

---

Monday – Saturday: **9:00 - 21:00 EDT**

Sunday: **closed**

## Address

---



Harbour Towne Marina, 850 NE 3rd St,  
STE 213, Dania, FL 33004