

SCHOONER RUTH — CUSTOM



Builder: CUSTOM

Year Built: 2014

Model: Schooner

Price: PRICE ON APPLICATION

Location: United States

LOA: 100' 0" (30.48m)

Beam: 18' 10" (5.74m)

Max Draft: 11' 6" (3.51m)

Our experienced yacht broker, Andrey Shestakov, will help you choose and buy a yacht that best suits your needs **Schooner Ruth — CUSTOM** from our catalogue. Presently, at Shestakov Yacht Sales Inc., we have a wide variety of yachts available on our sale's list. We also work in close contact with all the big yacht manufacturers from all over the world.

If you would like to buy a yacht **Schooner Ruth — CUSTOM** or would like help answering any questions concerning purchasing, selling or chartering a yacht, please call **+1(954)274-4435**

TABLE OF CONTENTS

TABLE OF CONTENTS	2
SPECIFICATIONS	4
Overview	4
Basic Information	4
Dimensions	4
Speed, Capacities and Weight	4
Accommodations	4
Hull and Deck Information	4
Engine Information	5
DETAILED INFORMATION	6
Full Description	6
Equipment List	6
Disclaimer	7
Exclusions	7
Disclaimer	8
PHOTOS	9
SR3	9
SR1	9
SR2	9
Schooner Ruth - Main Pic	9
Schooner Ruth GA	10
Schooner_Ruth061034	10
Schooner_Ruth061051	10
Schooner_Ruth061038	10
Schooner_Ruth061050	10
Schooner_Ruth061043	10
clas18-0321	11
Schooner_Ruth061049	11

CONTACTS	12
Contact details	12
Telephones	12
Office hours	12
Address	12

SPECIFICATIONS

Overview

This 100' Custom Grand Banks Schooner for Sale was launched in 2014. SCHOONER RUTH is a true testament to the people of Barbados and to her owner.

Basic Information

Category: Schooner

Sub Category: Cruising Ketch

Model Year: 2014

Year Built: 2014

Country: United States

Dimensions

LOA: 100' 0" (30.48m)

LWL: 75' 10" (23.11m)

Beam: 18' 10" (5.74m)

Max Draft: 11' 6" (3.51m)

Speed, Capacities and Weight

Water Capacity: 1557 Gallons

Holding Tank: 35 Gallons

Fuel Capacity: 1180 Gallons

Accommodations

Total Cabins: 5

Total Heads: 3

Hull and Deck Information

Hull Material: Steel

Engine Information

Engines: 2

Manufacturer: Luger

DETAILED INFORMATION

Full Description

This 100' Custom Grand Banks Schooner for Sale was launched in 2014. SCHOONER RUTH is a true testament to the people of Barbados and to her owner. She is a 100' LOA steel Tom Colvin Design traditional Grand Banks Inter Island gaff topsail Schooner - a 15 year labor of love that is very well documented in the videos on this listing. The videos depict the emotion which being near this beautiful vessel evokes. Never before has she been available for sale and the opportunity to own a timeless vessel as well as the opportunity to be part of Barbados' history is now at hand. This is a preliminary listing. Click on the videos to really understand what SCHOONER RUTH means to Barbados and its people.

Equipment List

Main Engine - LUGGER Northern Lights L1066H 275HP + TwinDisc 2.8:1 GearBox +/-10 lph@8.5kts - 527 hours +/-Generator - Northern Lights M844LW3 20/16kW - 606 hours +/-Solar Panels - 3000watts +/- SOLBIAN Teflon Walkable 50watt(7), 112watt(13), 125watt(5), 137watt(4)VICTRON Solar Electronics Phoenix Inverter 24VDC/3000watt (2)Phoenix Inverter 24VDC/2000 watt (1)Phoenix Charger C24/1200 (2)Centaur Charger 24/60 (3)Centaur Charger 12/30 (1)Blue Power Charger IP20 12/7 (1)Blue Power Charger IP20 24/8 (1)Orion Converter 24/12-25 (3)Colour Control GX (1)Battery Monitor BMV 702 (2)Solar Chargers (29) Genasun 24VDC MPPT Solar Boost Max 8amp 24VDCBatteries - ROLLS-Surette L16 S550 428aH (24) Solar System, Engine 8D 1400CCA, GenSet Hankook 1000CCA, Emergency Hankook 1000CCA(2)Isolation Transformers (2)Galley Refrigeration CondensersNorthern Lights Technicold 3/4 HP & 1.5HP + Technicold Cold PlatesGalley Stove - Dickinson Mediterranean Propane Tanks 22lb(3)Deck Pump 2" LOADSTAR Marine Diesel Trash Electric Start/Manual Start 12,500gph/210gpmJABSCO PTO Pump 2" 502270-2111 12VDC ClutchEDSON - 2" Deck Bronze Hand Diaphragm Pumps (2) 1800gph/30gpmJabsco 1" 110v HandHeld Pump 500gph/83gpmBilge /Fire System Deck Manifold - 2" Sch160 Mains - BFG Marine Deck Remote Mechanical Valve Controls arrangementAC - DC Electric Panels - Rocker, Battery & Rotary Switches ULcertifiedLighting - LEDFire Extinguishers Powder (9)Smoke Detectors (7) FireBoy XintexER CO Detector (1) FireBoy XintexPropane Detector (2) Galley FireBoy XintexVHF Solas Station AIS B & GVHF Spare Station AISVHF Handheld Solas (2)EPIRBsART Imarsat SatPhone2 / Redport Optimiser WiFi RedPort ExtenderNavigation - iPad Pro2018-12.9" w NavionicsPaper Charts Imray Full Set Eastern CaribbeanDepth Wind Speed B&G TritonViking 12 Man Solas (2)Zodiac 10 Man (1)PFDs Solas Spinlock (10)NavLights -PERKO Series 1127-1130Climbing Gear - 2 sets new Singing-RockAnchor Windlass Electric 230/3 VFD IDEAL/Schaefer Windlass H7 Twin Gypsy & CapstanAnchors -ROCNA 150Kg (1) 50 fathoms 1/2" G43 chainCQR-75Kg (1)- 25 fathoms 5/8" G3 chainNORDIC "Fisherman" 150 Kg (2)Winches - HUTTON Australian 2 speed 60s (8) , 2 speed 80s - 12V electric main and schooner sheets (2)Mooring Line 600 ft 2" Nylon new on spoolRunning - New England 3 strand Spun Dacron & Double BraidWood Blocks - Arthur Dauphinee Lunenburg, N.S.Steering Gear -

Bronze Fisherman # 7 Lunenburg Foundry, N.S. W emergency tiller armTender - West Marine
 3.5m Hypalon 15 HP Mercury 4 stroke on davitsTender - 3.5m Fibreglass Dinghy 4 HP Yamaha
 4 stroke Main Engine - LUGGER Northern Lights L1066H 275HP + TwinDisc 2.8:1 GearBox +/-
 10 lph@8.5kts - 527 hours +/-Generator - Northern Lights M844LW3 20/16kW - 606 hours +/-
 Solar Panels - 3000watts +/- SOLBIAN Teflon Walkable 50watt(7), 112watt(13), 125watt(5),
 137watt(4)VICTRON Solar Electronics Phoenix Inverter 24VDC/3000watt (2)Phoenix Inverter
 24VDC/2000 watt (1)Phoenix Charger C24/1200 (2)Centaur Charger 24/60 (3)Centaur Charger
 12/30 (1)Blue Power Charger IP20 12/7 (1)Blue Power Charger IP20 24/8 (1)Orion Converter
 24/12-25 (3)Colour Control GX (1)Battery Monitor BMV 702 (2)Solar Chargers (29) Genasun
 24VDC MPPT Solar Boost Max 8amp 24VDCBatteries - ROLLS-Surette L16 S550 428aH (24)
 Solar System, Engine 8D 1400CCA, GenSet Hankook 1000CCA,Emergency Hankook
 1000CCA(2)Isolation Transformers (2)Galley Refrigeration CondensersNorthern Lights
 Technicold 3/4 HP & 1.5HP + Technicold Cold PlatesGalley Stove - Dickinson Mediterranean
 Propane Tanks 22lb(3)Deck Pump 2" LOADSTAR Marine Diesel Trash Electric Start/Manual
 Start 12,500gph/210gpmJABSCO PTO Pump 2" 502270-2111 12VDC ClutchEDSON - 2" Deck
 Bronze Hand Diaphragm Pumps (2) 1800gph/30gpmJabsco 1" 110v HandHeld Pump
 500gph/83gpmBilge /Fire System Deck Manifold - 2" Sch160 Mains - BFG Marine Deck Remote
 Mechanical Valve Controls arrangementAC - DC Electric Panels - Rocker, Battery & Rotary
 Switches ULcertifiedLighting - LEDFire Extinguishers Powder (9)Smoke Detectors (7) FireBoy
 XintexER CO Detector (1) FireBoy XintexPropane Detector (2) Galley FireBoy XintexVHF Solas
 Station AIS B & GVHF Spare Station AISVHF Handheld Solas (2)EPIRBSART Imarsat
 SatPhone2 / Redport Optimiser WiFi RedPort ExtenderNavigation - iPad Pro2018-12.9" w
 NavionicsPaper Charts Imray Full Set Eastern CaribbeanDepth Wind Speed B&G TritonViking
 12 Man Solas (2)Zodiac 10 Man (1)PFDs Solas Spinlock (10)NavLights -PERKO Series 1127-
 1130Climbing Gear - 2 sets new Singing-RockAnchor Windlass Electric 230/3 VFD
 IDEAL/Schaefer Windlass H7 Twin Gypsy & CapstanAnchors -ROCNA 150Kg (1) 50 fathoms
 1/2" G43 chainCQR-75Kg (1)- 25 fathoms 5/8" G3 chainNORDIC "Fisherman" 150 Kg
 (2)Winches - HUTTON Australian 2 speed 60s (8) , 2 speed 80s - 12V electric main and
 schooner sheets (2)Mooring Line 600 ft 2" Nylon new on spoolRunning - New England 3 strand
 Spun Dacron & Double BraidWood Blocks - Arthur Dauphinee Lunenburg, N.S.Steering Gear -
 Bronze Fisherman # 7 Lunenburg Foundry, N.S. W emergency tiller armTender - West Marine
 3.5m Hypalon 15 HP Mercury 4 stroke on davitsTender - 3.5m Fibreglass Dinghy 4 HP Yamaha
 4 stroke

Disclaimer

The company offers the details of this vessel in good faith but cannot guarantee or warrant the accuracy of this information nor warrant the condition of the vessel. A buyer should instruct his agents, or his surveyors, to investigate such details as the buyer desires validated. This vessel is offered subject to prior sale, price change or withdrawal without notice.

Exclusions

Owner's personal belongings.

Disclaimer

The Company offers the details of this vessel or yacht in good faith but cannot guarantee or warrant the accuracy of this information nor warrant the condition of the vessel. A buyer should instruct his representatives, agents, or his surveyors, to investigate such details as the buyer desires validated. This vessel or yacht is offered subject to prior sale, price change, or withdrawal without notice.

PHOTOS

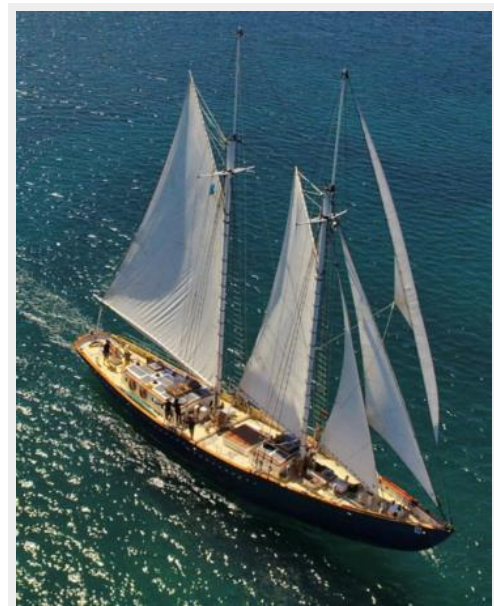
SR3



SR1



SR2



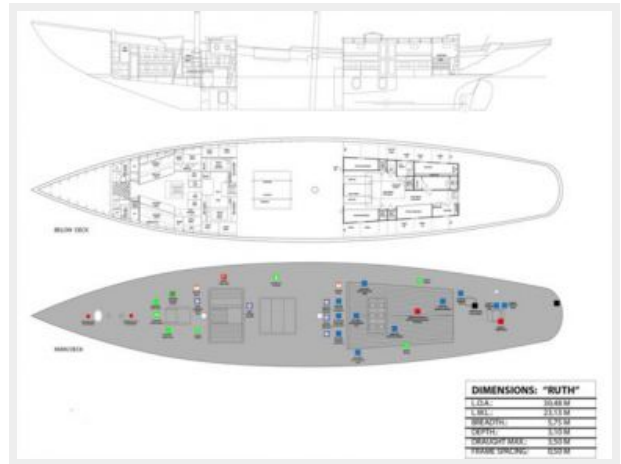
Schooner Ruth - Main Pic



Schooner_Ruth061034



Schooner Ruth GA



Schooner_Ruth061051



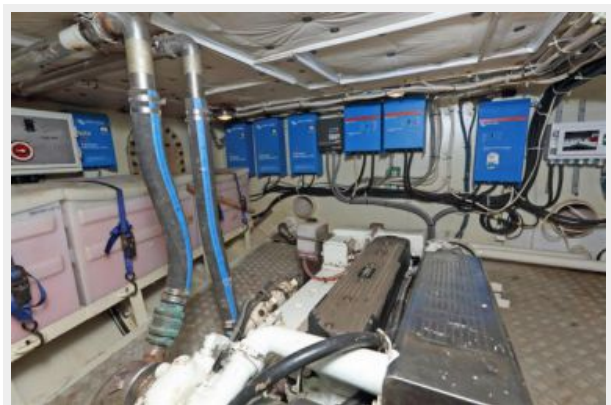
Schooner_Ruth061038



Schooner_Ruth061050

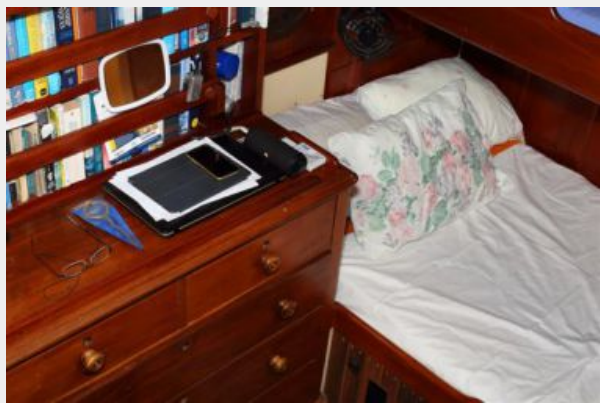


Schooner_Ruth061043



clas18-0321

Schooner_Ruth061049



CONTACTS

Andrey Shestakov, leading yacht broker of the sales department of Shestakov Yacht Sales Inc. Shestakov Yacht Sales Inc., the official representative of the Miami/Fort Lauderdale FL headquarters.

Contact details

Email: **andrey@shestakovyachtsales.com**

Web: shestakovyachtsales.com/en/

Telephones

USA: +1(954)274-4435

Office hours

Monday – Saturday: **9:00 - 21:00** EDT

Sunday: **closed**

Address



Harbour Towne Marina, 850 NE 3rd St,
STE 213, Dania, FL 33004