

REBEL — TRINITY



Судостроитель: TRINITY

Год постройки: 2005

Модель: Моторная яхта

Цена: ЦЕНА ЯХТЫ ПО ЗАПРОСУ

Местонахождение: United States

Длина общая: 157' 6" (48.01m)

Ширина: 28' 2" (8.59m)

Макс. осадка: 8' 0" (2.44m)

Крейс. скорость: 15 Kts. (17 MPH)

Макс. скорость: 19 Kts. (22 MPH)

Купить **REBEL — TRINITY** а также выбрать подходящую вам яхту из нашего каталога яхт вам поможет опытный яхтенный брокер Андрей Шестаков. На сегодняшний день компания **Shestakov Yacht Sales Inc.** имеет большое количество яхт в собственном списке продаж, а также тесно сотрудничает со всеми крупными яхтенными производителями по всему миру.

Для того чтобы купить яхту **REBEL — TRINITY** а также проконсультироваться по любому вопросу связанному с покупкой, продажей, чартером яхт позвоните по телефону **+7(918)465-66-44**.

ОГЛАВЛЕНИЕ

ОГЛАВЛЕНИЕ	2
ХАРАКТЕРИСТИКИ	5
Обзор	5
Основная информация	5
Размеры	5
Скорость, вместимость и масса	6
Размещение	6
Корпус и палуба	6
Информация о двигателе	6
ПОДРОБНОЕ ОПИСАНИЕ	7
Accommodations	7
Main Salon	7
Formal Dining Area	8
Galley Equipment	8
Master Stateroom, On-Deck	8
(4) Guest Staterooms, Below	9
Crew Quarters & Laundry Center	10
Pilothouse Equipment / Captain's Cabin	10
Electronics, Navigation & Communication Equipment	11
Skylounge Equipment	11
Upper Aft Deck	12
Flybridge / Sun Deck Equipment	12
Tender & Toys	13
Deck Equipment	13
Aft Deck / Swim Platform	14
Electrical Equipment	15
Engine Room & Mechanical Equipment	15
Exclusions	16

Исключения	16
Отказ от ответственности	17
ФОТОГРАФИИ	18
Main Salon	18
Main Salon Bar Aft	19
Formal Dining	19
Main Deck Companionway	19
Galley	19
Pilothouse	20
Skylounge	20
On-Deck Master Stateroom	21
Master Bath	22
Queen Guest Stateroom	22
Guest Bath	22
Queen Guest Stateroom	23
Guest Bath	23
Queen Guest Stateroom	23
Guest Bath	23
Twin Guest Stateroom	24
Upper Aft Deck	24
Portugese Deck	24
Upper Aft Deck	25
Flybridge Deck	25
Bridge Deck, Aft	26
Bridge Deck, Aft	26
Tenders	26
Main Deck Aft	26
Aft Deck	26
Aft Swim Platform	27

Stern	27
Crew Lounge	27
Lazarette	27
Engine Room	28
Rebel Profile	28
Rebel General Arrangement	28
LAYOUT	29
КОНТАКТЫ	30
Контактная информация	30
Телефоны	30
Время работы	30
Адрес	30

ХАРАКТЕРИСТИКИ

Обзор

Refit in 2015, REBEL's interior design exudes an understated, welcoming ambiance with the open plan salon and formal dining area on the main deck. The skylounge on the bridge deck level is full-width; each level offers large windows and sliding glass doors to the aft deck. REBEL accommodates ten guests in five beautiful en-suite staterooms. The expansive exterior decks offer alfresco dining, lounging areas and three fully equipped bars. The latest in audio/ visual entertainment ensures the enjoyment of movies and music throughout the exterior and interior. MAJOR \$1M PRICE REDUCTION!

Основная информация

Тип судна: Моторная яхта

Подкатегория: Tri-Deck

Модельный год: 2005

Год постройки: 2005

Год обновления: 2015

Вид обновления: Engine room & interior refit - '18 new stern paint

Страна: United States

Верх: Enclosed P.H. W/Sundeck

Открытая палуба мостика: Да

Размеры

Длина общая: 157' 6" (48.01m)

Длина палубы: 157' 1" (47.88m)

Ширина: 28' 2" (8.59m)

Макс. осадка: 8' 0" (2.44m)

Скорость, вместимость и масса

Крейс. скорость: 15 Kts. (17 MPH)

Макс. скорость: 19 Kts. (22 MPH)

Дальность на макс. скорости: 2100 Kts. **Чистый вес:** 465 Pounds

Вместимость воды: 2700 Gallons

Вместимость сточного бака: 1100 Gallons

Объем топливного бака: 16700 Gallons

Размещение

Всего кают: 5

Спальные места: 10

Каюта капитана: Да

Каюты экипажа: 9

Корпус и палуба

Материал корпуса: Aluminum

Материал палубы: Teak over Aluminum

Дизайнер корпуса: Trinity Yachts

Дизайнер экстерьера: Stefano Righini

Дизайнер интерьера: Lindsey Howery

Информация о двигателе

Двигатели: 2

Производитель: Caterpillar

Модель: 3512B's

Тип двигателя: Inboard

Тип топлива: Diesel

ПОДРОБНОЕ ОПИСАНИЕ

Accommodations

Opening either port or starboard hinged swing door from main deck and you will enter a full width foyer with completely unobstructed walk through access to either side of the vessel. Centerline in the foyer is a mahogany banister with spiral stairs leading into guest accommodations with four staterooms.

Moving forward on starboard side you pass a stew closet, spiral staircase to skylounge and the on-deck day head. Continuing forward into the on-deck master suite with an office, stewardess service station with Sub-Zero drawer refrigerators, a marble top bar, and service storage cabinetry. The full beam master has six oversized oval windows, king size centerline bed, his and hers baths with pass through shower and jet tub arrangement, an abundance of large drawer storage, and dual walk in closets cedar-lined closets.

Main Salon

Entering the main salon from the aft deck through double sliding glass doors, you are greeted with a full service L-shaped, marble top bar. The interior features custom mahogany joinery with cherry accents and burle inlays throughout. Nine large windows, port and starboard, allow an abundance of natural light into this area. Forward is an entertainment center with a 58" HDTV on an electric hi/lo lift along with comfortable yet elegant seating areas for guests.

- Mahogany joinery with high gloss cherry inserts throughout
- Full service bar w/ sliding window access to aft deck
- Stainless steel framed double door entry from aft deck
- (2) Custom upholstered sofa's
- (2) Custom upholstered armless chairs
- Custom marble cocktail table
- Crestron lighting system upgrade ('15)
- Marantz / RTI Audio Visual equipment ('15)
- Centerline entertainment center
- (9) Large windows in salon, port & stbd
- Hunter Douglas pleated blinds & privacy shades
- Bar w/stainless sink, GE refrigerator, Scotsman icemaker, Crystal storage lockers, storage drawers & lofted storage cabinets
- (5) Overhead speakers
- Main Deck Foyer:
 - Marble floors ('15)
 - Full beam width and dual entryways either side to exterior main deck
 - On-deck day head w/marble vanity, oval window & privacy shade
 - Stairwell down to lower guest accommodations

Formal Dining Area

Moving through the salon forward into the formal dining area featuring a quartz dining table with high gloss cherry trim and seating for up to (10) guests. Marble top buffets are on either side of the dining table with ample storage below. Total privacy can be attained by four frosted sliding doors on either side.

- Completely private dining area w/ concealed frosted glass sliding doors
- Custom cherry w/quartz inlay dining table
- (10) Custom upholstered armless dining chairs w/cherry trim rail
- Dual buffet cabinets w/ marble top, each side of table
- Creston lighting system upgrade ('15)
- Custom oval soffit w/ LED lighting
- (2) Custom light fixtures
- (8) Double door storage cabinets
- (4) Windows with Hunter Douglas blackout shades

Galley Equipment

- (2) DelField stainless refrigerators
- DelField stainless freezer
- (2) Rational convection/steam ovens ('17)
- (2) Wolf 6-induction burners range ('17)
- Miele stainless dishwasher
- Kitchen Aid stainless dishwasher
- (2) Double basin stainless sinks
- (2) Dry storage pantry's
- Stainless drink refrigerator
- Stainless trash compactor
- Panasonic microwave
- Scotsman icemaker
- Stainless backsplashes & granite countertops ('16)
- Samsung 23" TV
- Hinged privacy door w/frosted glass
- (3) Oval windows w/ blinds
- Fixed fire suppression system
- Commercial extraction system
- Crestron lighting system upgrade ('15)
- Increased BTU air handler ('17)
- Amtico flooring throughout

Master Stateroom, On-Deck

Opening either port or starboard hinged swing door from main deck and you will enter a full width foyer with completely unobstructed walk through access to either side of the vessel. Centerline in the foyer is stainless and mahogany banister with spiral stairs leading into guest accommodations. Moving forward on starboard side you pass a stew closet, spiral stair case to sky lounge foyer, foul weather gear locker and the on deck day head. Continue forward into the master office where a stewardess service station is complete with two Sub-Zero drawer refrigerators, a marble top bar, and service storage cabinetry. The full beam master has six oversized oval windows, king size centerline bed, his and hers baths with pass through shower (his) and jet tub arrangement (hers), an abundance of large drawer storage, and dual walk in cedar lined closets.

- Custom upholstered suede King-size berth
 - Custom upholstered suede bolstered bulkhead behind berth
 - (2) Built-in nightstands w/marble top
 - Built-in dressers, port & stbd w/ marble top
 - Built-in radius vanity w/ bench seat, port
 - Upholstered settee w/cabinets on each side, starboard
 - High gloss white paneling w/ silk inserts throughout
 - Lucite desk w/ lamp, chair in entryway companionway
 - Built-in entertainment center w/ TV, cabinets & book shelves
 - Oversized walk-in cedar-lined closet
 - Lockable secondary closet
 - (2) Sub-Zero drawer refrigerators
 - Burg-Watcher safe
 - (4) Crestron light control panels
- His & Her Bath:
- Marble vanities, dual decorative sinks, custom fixtures
 - Oversized marble shower
 - Round marble Jacuzzi tub
 - (2) Heads & bidet on her side

(4) Guest Staterooms, Below

Down the spiral staircase from the main deck foyer you enter the lower guest accommodation companionway with marble flooring and mahogany joinery throughout. The layout consists of one twin stateroom forward starboard a king stateroom port forward and two identical king staterooms located aft. Centerline is a service station with two Sub-Zero drawer type refrigerators, followed by an interior storage closet. All four cabins feature the same amenities just in a slightly different layout. Each are complete with mahogany joinery throughout with burl inlays, entertainment center, two oval shaped port holes with sliding Shoji screens, ample drawer storage and cedar-lined closet storage, ensuite head, and dual night stands with mahogany tops.

- New marble throughout ('16)
- Granite tops in all guest baths

- Marble flooring in all guest baths
- Marantz / RTI AV equipment ('15)
- Walk-in cedar-lined closets
- Crestron lighting system upgrade ('15)
- Sliding Shoji screen panels

Crew Quarters & Laundry Center

Down stairwell from the galley you will enter the laundry center and crew quarters. There are (3) cabins with (2) over/under bunks and ensuite bath in each cabin. The first officer's cabin is slightly larger than the two cabins forward. The crew mess has a large L shaped settee to port and equipped with Corian countertops and ample shelving and cabinetry storage.

- Corian countertops
- Crew mess table
- Shelving and storage cabinetry
- Single basin sink
- Siemens ships alarm panel display
- Samsung 50" HDTV
- CCTV system on 32" HDTV
- Medical storage locker
- Sub Zero refrigerator
- Hoshizaki dishwasher
- GE Microwave
- (4) Bilge access hatches
- Laundry Center:
- Overhead storage cabinetry
- Corian counter top
- Fold-down folding table
- (2) Miele washers
- (2) Miele dryers
- Sink

Pilothouse Equipment / Captain's Cabin

Entering the pilothouse from the starboard side companionway, you are met with a full 180-degree panoramic visibility with nine large windows. Two entry doors on either side accessing the observation deck with Portuguese bridge.

Inside the pilothouse is a large crescent shaped settee, complete helm station with all navigational and ship's monitoring equipment, GMDSS station, a captain's office and on-deck captain's cabin.

- (2) Wing station fold-out controls, port & stbd, outside bridge

- GMDSS Station w/ current certification
- Stidd adjustable helm chair
- Custom cherry & stainless steering ship's wheel
- Chart table and chart drawers
- Crestron lighting system upgrade ('15)
- Upholstered leather settee w/ stainless foot rest
- Large chart table & chart drawers
- Windshield wiper control panel
- Kahlenberg horn control
- (2) ACR spotlight controls
- Custom oval soffit w/ LED lighting
- Teak & holley flooring

Electronics, Navigation & Communication Equipment

- (2) Furuno 96-mile X-Band Radars w/ ARPA
- Furuno BNWAS system display & audible sounder
- (2) Furuno Navigator GP-150 GPS
- Furuno RD-30 display
- (2) VEI 23" monitors
- (3) VEI 18" monitors
- Sperry Marine NaviPilot 4000 autopilot
- Sperry Marine Gyro compass
- Quantum bow thruster control
- Quantum zero speed stabilizer controls
- Furuno FCV 1200L depth sounder
- (2) SeaTel Direct TV system ('15)
- VSAT satellite systems ('15)
- RexRoth engine control binnacle
- Transas & Nobeltec navigation software
- (2) Caterpillar digital engine displays
- (2) Engine start/stop switches w/ separate emergency stops
- Sperry Marine rudder order indicator
- Sperry Marine rudder angle indicator
- EMI Steering pump alarm panel
- (2) B&G 20/20 displays
- Furuno VHF FM8500
- Icom 602 VHF
- Elbex CCTV security system

Skylounge Equipment

The full beam skylounge features a full service mahogany bar equipped with refrigerated wine storage, custom lofted storage cabinets for glassware and built-in entertainment center with large TV. The six oversized windows provide an exceptional view and features Hunter Douglas shades and blackout blinds for privacy. Aft, through the automatic double sliding doors in the upper aft deck. Dual marble top buffets are on either side complimented by custom teak dining furnishings and lounging chairs. Access to both the upper sundeck and main aft deck is provided by spiraling teak step stairs with stainless grab rails.

- Mahogany cabinetry w/ marble countertops (replaced '15)
- Low-profile leather sofa
- Cocktail table & end tables w/ decorative table lamps
- (2) Leather barrel chairs
- Custom overhead soffit w/ LED lighting
- On-deck day head w/ marble vanity, custom wallcovering & head
- Crestron lighting system upgrade ('15)
- Built-in entertainment center w/bookshelves, cabinets & Samsung 50" HDTV, Marantz / RTI AV equipment ('15)
- Custom Hunter Douglas blinds w/ blackout shades
- Custom mahogany bar w/ marble top, mirrored backsplash, sink;
- Fisher Paykel drawer style dishwasher
- Kitchen Aid trash compactor
- Scotsman icemaker & GE refrigerator
- (3) High back bar stools
- (3) Crystal glassware storage cabinets
- (8) Lofted & hidden storage cabinets

Upper Aft Deck

- Automatic sliding doors from skylounge
- Teak decks
- Storage cabinets, port & stbd w/ marble tops (new '16)
- Triconfort teak dining table w / (6) teak chairs w/ stainless base
- Teak settee w/ cushions & teak tables
- (4) Teak chaise lounge chairs & ottomans w/cushions
- (2) Spiraling stairs w/ teak steps & stainless hand rails
- High gloss white overhead panels
- (4) Outdoor speakers
- (14) Bezel over head lights
- Emergency fire station with fire pump control

Flybridge / Sun Deck Equipment

Up to the sun deck via spiral teak stairs with stainless steel hand rail you are immediately met with a full service L-shaped marble top bar with four fixed stainless steel bar stools. This area is generously shaded open arrangement allowing versatility with 11-piece custom teak outdoor furniture and expandable area.

The bar and lounging area is complimented by an air conditioned day head with basin sink and oversized mirror. Nautical structures 3500LB crane provides lifting capabilities for up to a 20' tender and jet skis.

- Bar w/ mable top & stainless footrest (new '15)
- (2) Perlick refrigerators
- Hoshizacki icemaker
- Thermal Engineering gas grill
- Single basin sink
- (2) GFCI Protected outlets
- (6) Storage cabinets
- (4) Stainless fixed pedestal bar stools
- Non-skid paint ('15)
- Nautical Structures 3500lb crane (rebuilt 2/19)
- Lexan and stainless framed forward windshield
- (4) Storage lockers for deck gear
- (3) Removable sail cloth sun shades forward
- (6) Polk speaker sound system
- Lorex security camera
- Teak furnishing 11-piece set w/sunlounge chairs, settee & tables
- (8) Stainless bezel overhead lights
- 58" HDTV w/ Skyvoo weather enclosure
- Round jacuzzi tub located forward w/steps (portable)

Tender & Toys

- 17' Zodiac Pro RIB center console tender w/ 115HP O/B
- (2) Sea Doo RXP waverunners
- Sea Doo RXP X 300 waverunner
- Yamaha Super Jet stand-up jetski
- (3) Paddle boards
- (2) Sea Kayaks
- (3) Sea Bobs

Deck Equipment

- Muir hydraulic anchor windlass/capstans (rebuilt '17)

- Nautical Structures 1100 hydraulic crane on bow (rebuilt '16)
- Stockless anchors
- Anchor locker access hatch
- (2) Oversized boson lockers
- Jet ski cradles on foredeck
- Nautical Structures 3500 davit, on sundeck
- Observation deck forward of pilothouse w/ Portuguese bridge
- Custom oversized sunpads on forward deck, port & starboard
- (2) Marquipt ladders
- Custom swim ladder
- White/Blue underwater lights
- Outdoor shower
- Security Equipment:
- Dahau CCTV camera system ('16)
- Dahau adjustable cameras
- Touchscreen monitors in pilothouse/crew
- (6) Ship's safes
- Safety Equipment:
- (3) Life rafts w/ HSR
- (4) Life rings w/ HSR
- EPIRB, float free w/ HSR
- Class A MedAire medical kit
- Standard flares
- Fire Fighting Equipment:
- Fire/head/smoke detectors throughout
- Fixed FM200 fire system in galley/engine room
- Portable CO2 throughout
- Fire extinguishers throughout
- (3) Fire Fighting bunker gear sets
- (3) Firefighting seawater stations & crash pump
- Fixed CO2 fire suppression system (engine room)

Aft Deck / Swim Platform

- Marquipt hydraulic passerelle, stbd
- High gloss varnished cherry stained cap rails
- High gloss overhead panels and HVAC outlets
- Boarding gates, port & starboard
- Breakfast bar w/marble top
- Built-in bench seating w/ cushions
- High gloss slid-able teak table for (10)
- (6) Teak & stainless dining chairs w/ cushions
- Starboard side secondary engine room entrance
- (4) 16,000 BTU air handler units

- (2) Muir hydraulic capstans
- (4) Stainless commercial sized cleats
- (2) Side glass weather shields
- (15) Stainless bezel overhead lights
- (4) Outdoor overhead speakers
- (3) Lorex security cameras
- (7) Deck storage lockers
- Fixed fire suppression release station
- Teak decks
- Dual stairs w/ teak steps down to swim platform
- Aft Swim Platform:
- Aft underwater lights ('15)
- New transom paint – Rybovich '18
- Oversized teak sole swim platform & step
- Dual 100A shore power connections
- Hot and cold shower
- Dockside freshwater connection to Spot Zero
- (2) Stainless commercial sized cleats
- Watertight door to lazarette/engine room

Electrical Equipment

- Twin Kilo-Pak 99KW Generators, Overhauled at 16K hours Total Gen hours: (Port: 25,100 / Stbd: 24,900)
- Custom sound shields & (2) sets of analog gauges for Gens
- 120/208v, 3-Phase electrical system
- Asea shore power system
- (2) Batteries CCA1000, 24v DC for ea main engine (new '19)
- (2) Batteries 24v CCA 800 for ea generator (new '19)
- (2) Matervolt battery chargers for main engines & gens

Engine Room & Mechancial Equipment

- (2) Caterpillar 3512B's w/ stainless and chrome package
- Caterpillar 6000 hour engine service performed
- (2) Reintjes 3.048:1 reduction gear boxes
- Redundant hydraulic PTO's for central hydraulic system (port new '19)
- (3) Racor 1000MA fuel filter for each main engine ('15)
- (2) Racor 100MA fuel filter per generator ('15)
- (2) Tides shaft seal arrangements
- Ships systems 15" monitoring panel
- (3) Domestic system 15-ton A/C chillers (replaced '17)
- Headhunter Tidal Wave sewage treatment & grey water system

- Custom fabricated black water vent flushing system ('17)
- Headhunter tank display / control panel for black and grey systems
- EMI steering control / alarm panel
- (2) Resilient mounted air compressors
- Hankison compressed air system dryer
- (2) Spot Zero 2100 GPD watermakers w/ touch panel displays ('17)
- Modified dockside filling / SpotZero system on swim step ('17)
- Quantum zero speed stabilizer power pack w/ (2) 3-phase hydraulic pumps (rams '18)
- Quantum heat exchanger (new '19)
- (2) AC powered fuel transfer pumps
- Alfa Laval fuel centrifuge with cycle automation
- Oil water separator per ABS
- (2) Hot water heaters
- Auxiliary motor control panel
- Removable diamond plate decking system (powder coated '15)
- Delta T Ventilation system
- CO2 Fixed fire suppression system as per ABS
- Redundant bilge / fire systems as per ABS
- Emergency steering / back up propulsion control center per ABS
- Oil change system for mains, gearboxes and generators
- Clean lube oil tank: 149 gallons / Dirty Oil tank: 119 gallonsLazarette / Engine Control Room:
- Aft access from swim step
- Aft engine room access
- Engineers cabin w/ double berth & ensuite head
- Engineers desk and computer
- Steering flat access hatch
- Storage cabinets and bilge accesses
- (2) Woodward EGCP-2 generator control panels
- Power management center & ships distribution switchboard
- Snap-On 53" tool box w/ work bench & fixed vise
- DelField refrigerator / freezer unit
- Cornelius commercial icemaker
- Miele washer & dryer
- Fixed firefighting station w/ hose & pump control

Exclusions

- All owner & crew's personal items
- Ship's Bell

Исключения

При продаже яхты исключаются личные вещи владельца.

Отказ от ответственности

Компания предоставляет описание судна или яхты добросовестно, но не может гарантировать точность этой информации, а также не ручается за техническое состояние. Покупатель должен проинструктировать своих агентов или оценщиков исследовать представленную информацию более подробно, по собственному желанию. Продажа судна или яхты, изменение цены или снятие с продажи будет происходить без предварительного уведомления.

ФОТОГРАФИИ



Main Salon



Main Salon Bar Aft



Formal Dining



Main Deck Companionway



Galley





Pilothouse



Skylounge





On-Deck Master Stateroom



Master Bath



Queen Guest Stateroom



Guest Bath



Queen Guest Stateroom



Guest Bath



Queen Guest Stateroom



Guest Bath



Twin Guest Stateroom



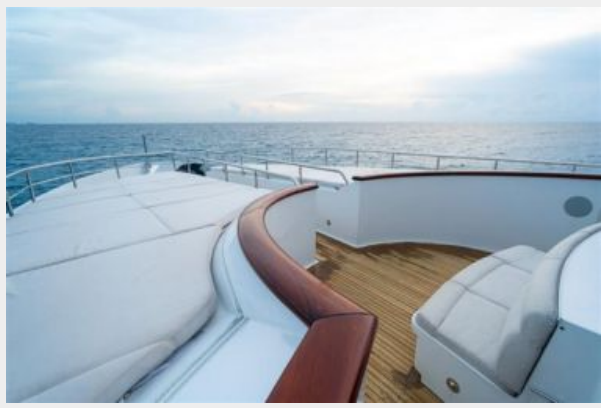
Upper Aft Deck



Portugese Deck



Upper Aft Deck



Flybridge Deck



Bridge Deck, Aft



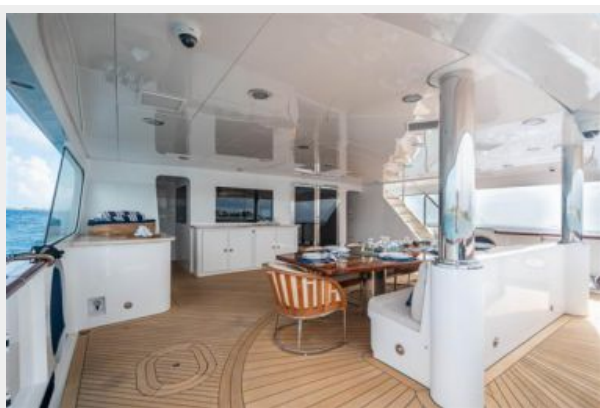
Bridge Deck, Aft



Tenders



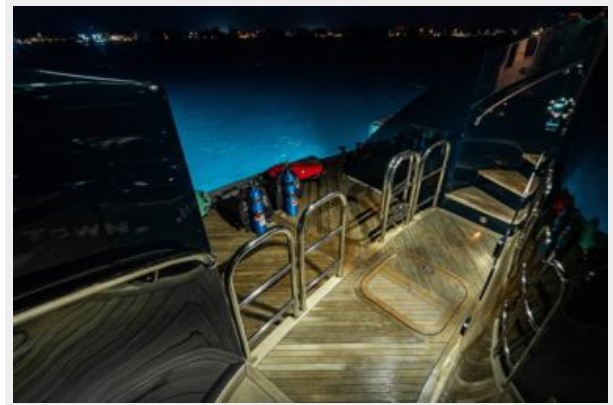
Main Deck Aft



Aft Deck



Aft Swim Platform



Stern



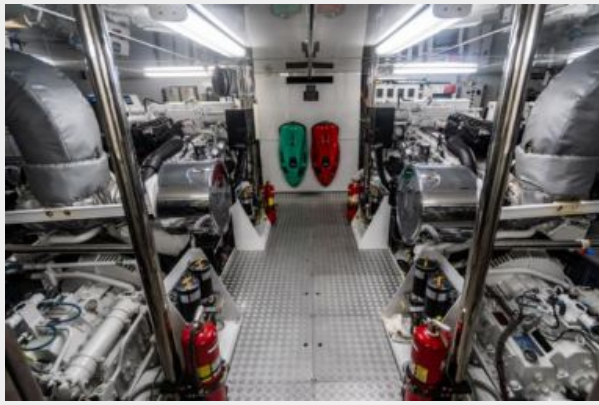
Crew Lounge



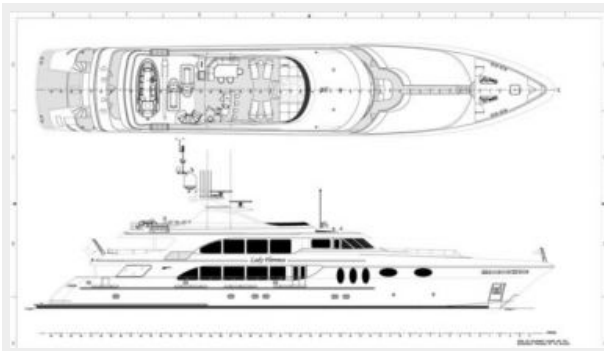
Lazarette



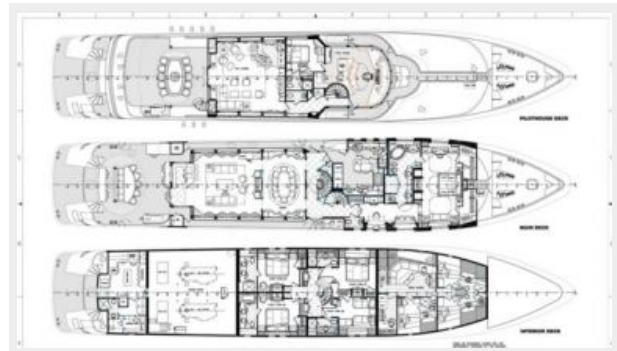
Engine Room



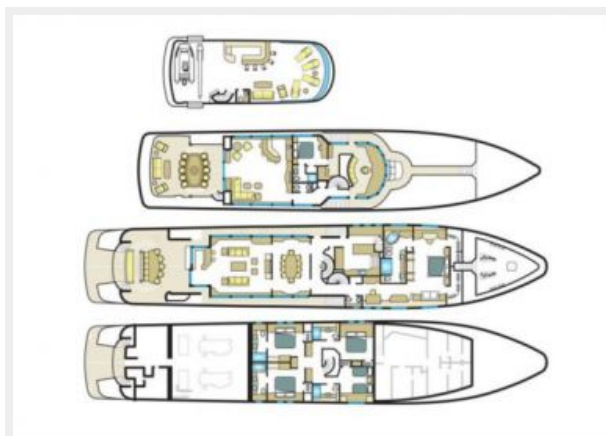
Rebel Profile



Rebel General Arrangement



LAYOUT



КОНТАКТЫ

Андрей Шестаков (Andrey Shestakov) – ведущий яхтенный брокер отдела продаж яхт и судов компании Shestakov Yacht Sales Inc. Официальный представитель Shestakov Yacht Sales Inc. для русскоговорящих клиентов в центральном офисе компании в Майами/Форт Лодердейл/Флорида/США.

Контактная информация

Email: **andrey@shestakovyachtsales.com**

Web: shestakovyachtsales.com

Телефоны

Краснодарский край: **+7(918)465-66-44**

США, Майами, Флорида: **+1(954)274-4435**

Время работы

Понедельник – Суббота: **9:00 - 21:00**
EDT

Воскресенье: **Закрито**

Адрес



Harbour Towne Marina, 850 NE 3rd St,
STE 213, Dania, FL 33004