

GT TIME — IRWIN YACHTS



Судостроитель: IRWIN YACHTS

Год постройки: 1989

Модель: Крейсерская яхта

Цена: **ЦЕНА ЯХТЫ ПО ЗАПРОСУ**

Местонахождение: United States

Длина общая: 43' 0" (13.11m)

Ширина: 13' 5" (4.09m)

Макс. осадка: 5' 4" (1.63m)

Крейс. скорость: 7 Kts. (8 MPH)

Макс. скорость: 8 Kts. (9 MPH)

Купить **GT TIME — IRWIN YACHTS** а также выбрать подходящую вам яхту из нашего каталога яхт вам поможет опытный яхтенный брокер Андрей Шестаков. На сегодняшний день компания **Shestakov Yacht Sales Inc.** имеет большое количество яхт в собственном списке продаж, а также тесно сотрудничает со всеми крупными яхтенными производителями по всему миру.

Для того чтобы купить яхту **GT TIME — IRWIN YACHTS** а также проконсультироваться по любому вопросу связанному с покупкой, продажей, чартером яхт позвоните по телефону **+7(918)465-66-44**.

ОГЛАВЛЕНИЕ

ОГЛАВЛЕНИЕ	2
ХАРАКТЕРИСТИКИ	5
Обзор	5
Основная информация	5
Размеры	5
Скорость, вместимость и масса	5
Размещение	6
Корпус и палуба	6
Информация о двигателе	6
ПОДРОБНОЕ ОПИСАНИЕ	7
Overview	7
Исключения	11
Отказ от ответственности	11
ФОТОГРАФИИ	12
004	12
022	12
010	12
021	12
023	13
009	13
057	13
028	13
019	13
025	13
013	14
053	14
020	14
058	14

054	14
007	14
017	15
059	15
039	15
018	15
044	15
008	15
048	16
029	16
060	16
046	16
040	16
005	16
036	17
024	17
042	17
050	17
027	17
032	17
026	18
035	18
034	18
045	18
006	18
012	18
038	19
041	19
033	19

052	19
011	19
002	19
055	20
016	20
014	20
051	20
003	20
043	20
030	21
037	21
015	21
031	21
056	21
047	21
049	22
КОНТАКТЫ	23
Контактная информация	23
Телефоны	23
Время работы	23
Адрес	23

ХАРАКТЕРИСТИКИ

Обзор

Broker's Comments:

This boat is a rare find and unique among other similar Irwin 43 boats. The owners purchased this boat with the intention of retirement and extended cruising both in the Great Lakes and the Caribbean. The professional refit was extensive and the boat is ready to go anywhere.

The photos and videos speak to the attention to detail and quality of the refit. The interior is light and airy with new ports and glass which is crystal clear. The leather upholstery is custom and imported from Scotland.

Energy management for long distance cruising and a desalination system make exotic ports a possibility.

Основная информация

Тип судна: Крейсерская яхта

Модельный год: 1989

Год постройки: 1989

Страна: United States

Размеры

Длина общая: 43' 0" (13.11m)

Длина по ватерлинии: 35' 6" (10.82m)

Ширина: 13' 5" (4.09m)

Макс. осадка: 5' 4" (1.63m)

Трапы: 58' 0" (17.68m)

Скорость, вместимость и масса

Крейс. скорость: 7 Kts. (8 MPH)

Макс. скорость: 8 Kts. (9 MPH)

Водоизмещение: 26000 Pounds

Вместимость воды: 180 Gallons

Вместимость сточного бака: 37 Gallons Объем топливного бака: 105 Gallons

Размещение

Всего кают: 2

Всего ком. состава: 2

Корпус и палуба

Материал корпуса: Fiberglass

Информация о двигателе

Двигатели: 1

Производитель: Yanmar

Модель: 4JH-HTE

Тип двигателя: Inboard

Тип топлива: Diesel

ПОДРОБНОЕ ОПИСАНИЕ

Overview

Accommodations

The boat has a center cockpit with sloop rig and wing keel. The mast is keel stepped. Her interior offers teak and holly sole, teak bulkheads and trim. Layout has owner's stateroom aft with private head and separate shower; navigation station and hanging wet locker in passageway, galley aft to starboard, L-shaped dinette with settee opposite. Guest V-berth is forward with head, separate shower stall and hanging locker. Both private heads have separate shower stalls, adjustable shower heads and Raritan toilets (manual flush pumps replaced in 2017). Each head also has Corian sinks and counter tops, single lever faucets, angled vanity mirrors and extra lights. The master stateroom also includes a separate sit down vanity station with mirrors and lights. Abundant locker storage is available throughout the boat.

Air conditioning - 2 units 1 forward and 1 aft by Flagship Marine with electronic digital controls. 16,000 btu forward and 9,000 btu aft (Both New 2018)

15 opening stainless steel port lights with screens by Newfound Metals (All new 2007). 6 tinted tempered glass fixed ports, 7 opening Lewmar Ocean series hatches with covers and built-in screens (New 2007).

Imported leather interior fabric

Stereo receiver CD Player 4 interior speakers and 2 cockpit speakers (Radio new 2008) (Cockpit speakers 2018)

Salon

The main salon has an L shaped settee with custom teak drop-leaf table to port and a settee to starboard. There is a large amount of storage space behind and beneath the port and starboard settees. Four lockers (all enclosed with louvered doors) are located above and behind the settees. At the aft end of the port settee is an end table with built-in liquor locker and TV. At the forward end of the starboard settee, there is a counter with a top opening locker. There is an opening port forward on the centerline and the seat cushions are all imported leather over thick custom foam.

A large number of cabin lights are provided so that each bunk and settee has a surplus of available illumination. All ceiling lights were replaced when the headliner was replaced in 2007.

Teak overhead handrails.

Forward Guest Cabin and Head

The V-berth with insert to convert to a large sleeping area. There is storage under the berth in six lockers, and a large hanging locker. The V-berth is finished in varnished teak, and a shelf runs fore and aft on both port and starboard sides. The cabin is well ventilated with two opening stainless steel ports and a large Lewmar hatch overhead. There are two doors, one a private door leading to the forward head and the other one to the main salon. The forward head is fitted with a vanity with a Corian sink and counter top, head, several lockers, and a separate stall shower with teak grate. The head has an opening stainless steel port and new overhead Lewmar hatch.

Owners Cabin and Head

The aft owner's stateroom is large, light, airy and very comfortable. On the centerline there is a queen size bed, with access from both sides. Above the head of the berth there is an opening port and wide shelf running athwartship. There are shelves, drawers, lockers and opening ports both port and starboard of the berth, and drawers at the foot of the bed. On the port side there is a substantial hanging locker. There are two overhead Lewmar hatches on the centerline, the aft one being over the bed and large enough to provide alternate egress in case of emergency. Opposite the foot of the bed is a vanity with large mirror and swing out swiveling seat. The ensuite aft head has a Corian sink and counter top. The a stall shower with teak grating drains to a dedicated sump and overboard pump. There are also two opening side ports.

Galley

The galley, located aft of the main salon to starboard, has excellent counter space, a stainless steel sink, a three burner propane stove with oven and a microwave oven. There is a vertical large refrigerator with separate freezer as well as a separate chest type deep freeze with SeaFrost cold plates and compressor. There are several lockers and four drawers for an abundant stowage of food, silver, and crockery within easy reach of the chef. In addition to the hot and cold pressurized water system there is a foot operated sea water pump.

The oven and stove are supplied by 2 10lb LPG tanks controlled by an electric LPG valve.

Electronics

Moving aft from the main cabin on the port side, is the navigation station it is complete with two large hinged desk tops with stowage under. The electrical panel is located at the forward end of the station. There is an Icon VHF Marine Transceiver and a remote autopilot control. There is also an opening port and ample bookshelf space above. At the aft end there is a good sized hanging locker.

At the helm is a Raytheon E-80 Chartplotter, Raymarine AutoPilot, Raytheon 24 Mile RADAR, wind speed, depth, speed ST-60+ instruments all mounted in navpod housings.

The helm is also equipped with a folding 32" wheel and a Richie compass (new 2018)

Electrical

NorPro 9kw generator 110V AC System with two 50 foot shore power cords, 110V outlets and USB charging ports in all cabins. 12 volt house bank batteries, separate 12 volt starting battery and a separate 24 volt system for the anchor windless, bow thruster, and water maker. Separate IOTA charges dedicated for each bank. A 345 Watt solar panel was installed in 2018 along with a Victron BMV-712 Smart Battery Monitor that includes a Bluetooth link to your smart phone to monitor battery condition.

The master switch and centralized breakers are on a custom black finished panel at the nav station. Also on the panel is power available and reverse polarity indicators.

Sails and Rigging

- Standing rigging 2009
- Sloop rig
- Keel stepped mast
- Mainsail and 140% Genoa
- UV cover for Genoa
- PROFURL Genoa Roller Furler
- Hydraulic boom vang
- Adjustable topping lift
- Spreader flag halyard

Masthead light, spreader lights, steaming light and running lights (All new in 2009) Mast and Boom stripped to bare metal primed and painted 2007 Two (2) Bariert #32 two speed self-tailing genoa sheet winches Two (2) Bariert #18 Main Halyard and Jib Halyard in mast winches Two (2) Harken #16 single speed self-tailing winches. Genoa furling line (2019). Outboard genoa track. Grounded rigging.

Hull and Deck

- One piece molded hull and keel
- Shoal Draft Wing Keel 4'11"
- New Bow-Thruster 2007 24-voltage Max-Power
- Ball Valves on all thru hulls below waterline (All new in 2010)
- One piece molded deck (Deck non-skid repainted 2008)
- New Teak Bow pulpit 2008
- Welded aluminum bowsprit with stainless bobstay
- Double anchor rollers and polished chafe-plate
- Stainless Steel bow pulpit, stern rail, vinyl coated double lifelines.
- Stanchions and 3 boarding gates (all re-bedded 2019)
- Teak Toe Rail (refinished 2019)
- Teak Drip Moldings, teak grab rails and teak bow sprit platform (2019)
- Maxwell Anchor Windlass w/integrated deck operation foot switches
- Dinghy Davits and 6 to 1 purchase hoist system
- 2 Stainless steel Swim Ladders

Cockpit and Canvas

- 4 cockpit storage lockers
- Pedestal steering (Edson console) guard
- 32" folding destroyer wheel with steering brake teak drink rack and teak cockpit table on pedestal
- Tinted Plexiglas companionway hatch and louvered teak drop boards.
- Full cockpit canvas with roll-up windows

Safety Equipment and Inflatable Dinghy

- Basic safety equipment including flares, life jackets, first aid kit and life ring
- Man Overboard system New case 2019
- One Force 9 Halon size one fire extinguisher
- 3 Walter Kidde fire extinguishers
- Man Overboard pole
- AB Dinghy on stern davits
- Johnson OMC Outboard 9.9 hp
- 2 Oars

Engine & Mechanical Equipment

66 HP YANMAR TURBO, 4JH-HTE 4 cylinder, freshwater cooled, straight drive diesel auxiliary motor with bronze prop shaft, zinc anode, stainless steel strut

- 3 blade feathering MAXPROP
- 9KW NorPro 9NY Generator
- Engine sound insulation
- Automatic Halon fire extinguisher system (Fireboy Halon 1301 System)
- Sea Water Intake Strainer
- Approximately 104 gallon fuel capacity
- Electric and Manual Bilge Pumps
- Manual Sea Water foot pump in galley
- Approximately 37 gallon holding tank capacity (2 tanks)

Water System

- Approximately 160 Gallon water capacity
- Spectra Ventura 200T - 20 GPH 24 volt water maker (New never run).
- Hot water heater - 6 Gallon Raritan A/C Hot Water Heater with engine heat exchanger.
- Pressure hot and cold water system with 12V water pump

Mooring Gear and Ground Tackle

- 4 Fenders
- Docklines
- Primary Anchor: stainless steel 45 lb plow with 200 feet of chain

- Secondary Anchor: CQR 45 lbs with 40 feet chain and 150 feet of rode
- Backup Anchor Fortress with 150 feet rode

Remarks and New Features

Unique IRWIN 43 MKIII fully equipped with NorPro 9KW generator, two air conditioning units (new 2018), custom leather upholstery and all new interior foam throughout. Awlgrip paint and nonskid

- (2008 still shines like new). 15 new s/s port lights and 7 Lewmar
- Ocean series hatches as well as new canvas in 2016. ST-60+ Wind /
- Depth / Speed (2008) along with 24mi Radar and Ratheon E-80 display all in NavPod cases on custom 1-1/4 inch Pedestal guard.
- The entire headliner was replaced in all cabins. Bow thruster.

General Maintenance and Care:

This vessel has been undergoing a refit for the past several years in preparation for the owner's retirement and an extended cruise. No expense has been spared. The vessel has been stored inside on a custom steel cradle for the winters since 2004 the exterior teak stripped and varnished in 2019. All life line stanchions were removed and re-bedded in 2019.

Exclusions

Owners personal items

Исключения

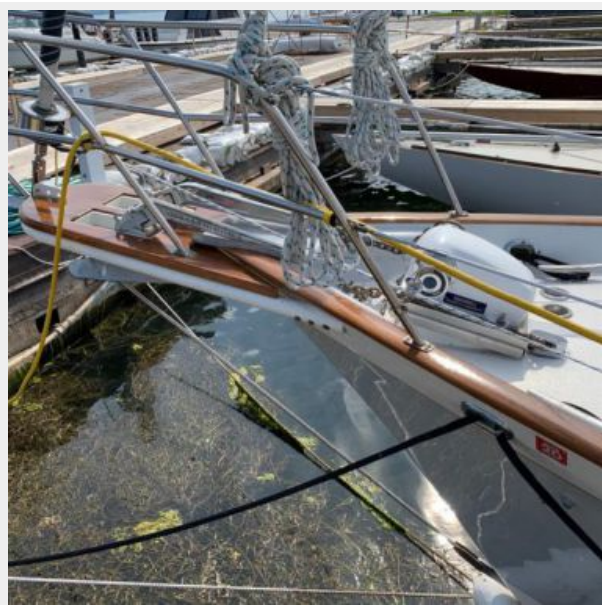
При продаже яхты исключаются личные вещи владельца.

Отказ от ответственности

Компания предоставляет описание судна или яхты добросовестно, но не может гарантировать точность этой информации, а также не ручается за техническое состояние. Покупатель должен проинструктировать своих агентов или оценщиков исследовать представленную информацию более подробно, по собственному желанию. Продажа судна или яхты, изменение цены или снятие с продажи будет происходить без предварительного уведомления.

ФОТОГРАФИИ

004



022



010



021



023



009



057



028



019



025



013



053



020



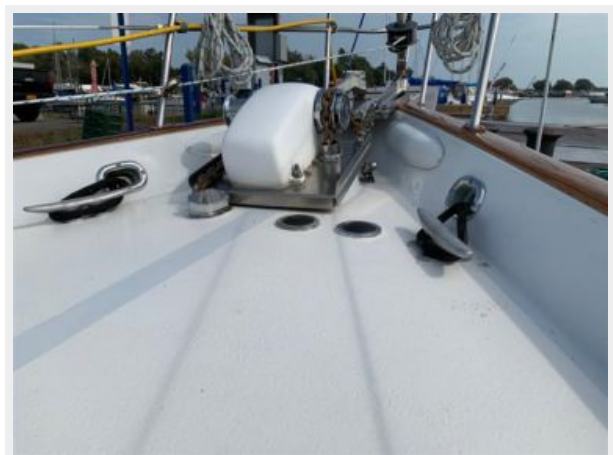
058



054



007



017



059



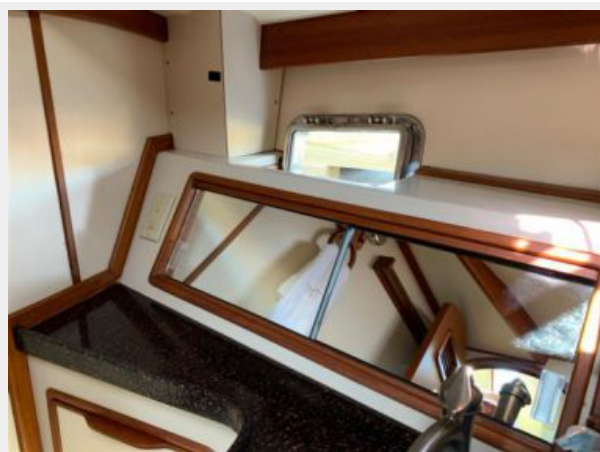
039



018



044



008



048



029



060



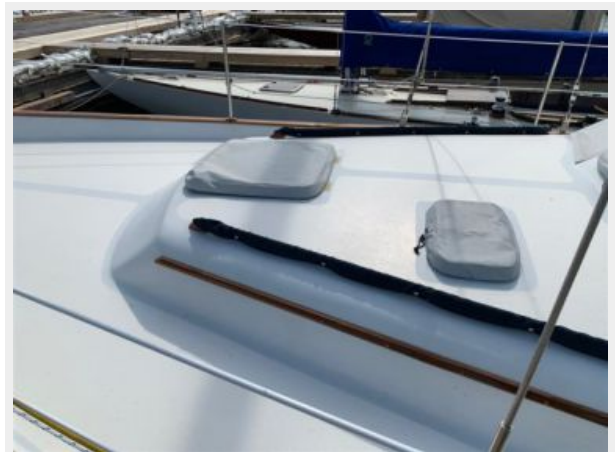
046



040



005



036



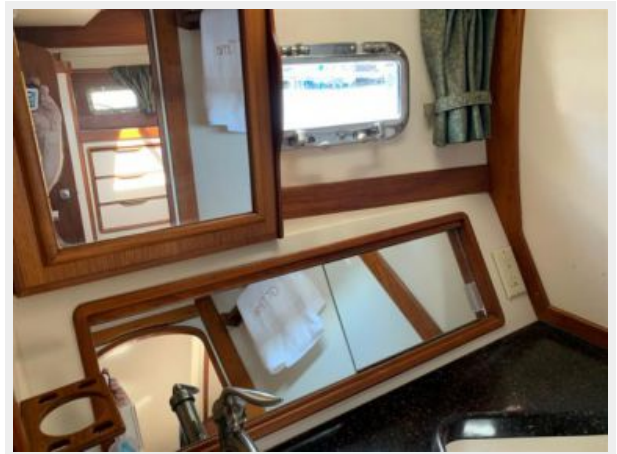
024



042



050



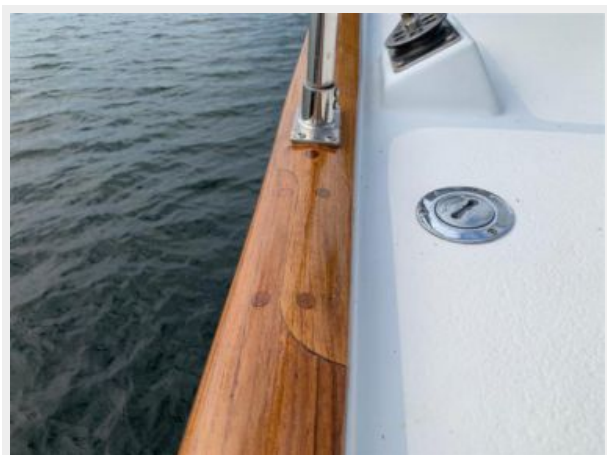
027



032



026



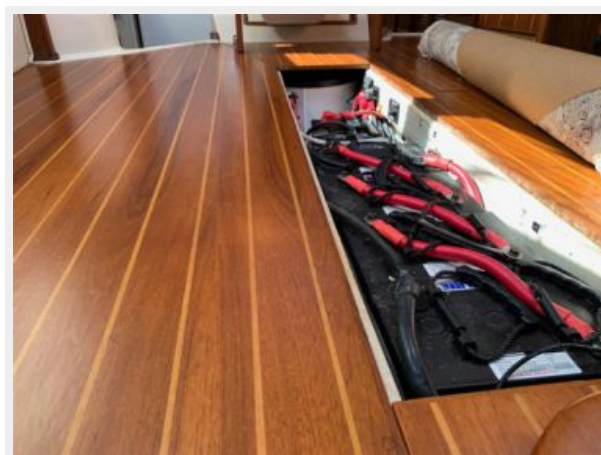
035



034



045



006



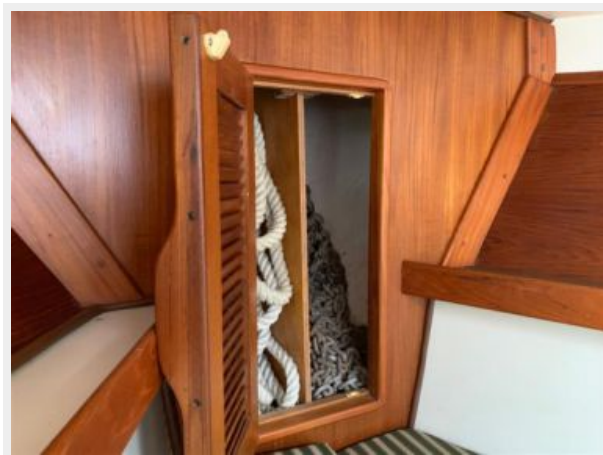
012



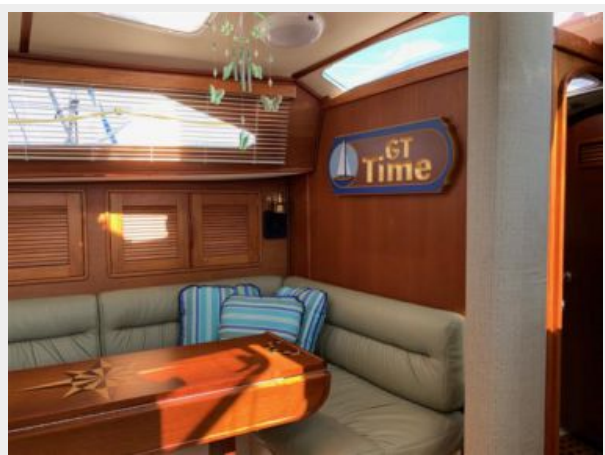
038



041



033



052



011



002



055



016



014



051



003



043



030



037



015



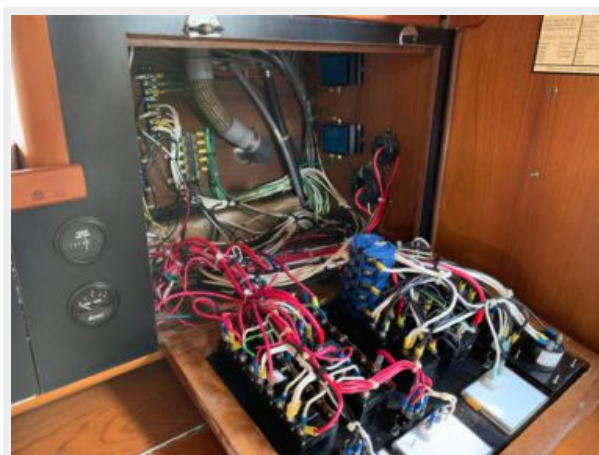
031



056



047



049



КОНТАКТЫ

Андрей Шестаков (Andrey Shestakov) – ведущий яхтенный брокер отдела продаж яхт и судов компании Shestakov Yacht Sales Inc. Официальный представитель Shestakov Yacht Sales Inc. для русскоговорящих клиентов в центральном офисе компании в Майами/Форт Лодердейл/Флорида/США.

Контактная информация

Email: andrey@shestakovyachtsales.com

Web: shestakovyachtsales.com

Телефоны

Краснодарский край: **+7(918)465-66-44**

США, Майами, Флорида: **+1(954)274-4435**

Время работы

Понедельник – Суббота: **9:00 - 21:00**
EDT

Воскресенье: **Закрито**

Адрес



Harbour Towne Marina, 850 NE 3rd St,
STE 213, Dania, FL 33004