

NATALIE J — BENETEAU



Builder: BENETEAU

Year Built: 2007

Model: Racing Sailboat

Price: PRICE ON APPLICATION

Location: United States

LOA: 36' 0" (10.97m)

Beam: 11' 4" (3.45m)

Cruise Speed: 7.8 Kts. (9 MPH)

Max Speed: 8.2 Kts. (9 MPH)

Our experienced yacht broker, Andrey Shestakov, will help you choose and buy a yacht that best suits your needs **Natalie J — BENETEAU** from our catalogue. Presently, at Shestakov Yacht Sales Inc., we have a wide variety of yachts available on our sale's list. We also work in close contact with all the big yacht manufacturers from all over the world.

If you would like to buy a yacht **Natalie J — BENETEAU** or would like help answering any questions concerning purchasing, selling or chartering a yacht, please call **+1(954)274-4435**

TABLE OF CONTENTS

TABLE OF CONTENTS	2
SPECIFICATIONS	4
Overview	4
Basic Information	4
Dimensions	4
Speed, Capacities and Weight	5
Accommodations	5
Hull and Deck Information	5
Engine Information	5
DETAILED INFORMATION	6
Overview	6
Exclusions	11
Disclaimer	11
PHOTOS	12
photo 03	12
photo 02	12
photo 33	12
photo 04	12
photo 16	12
photo 18	12
photo 21	13
photo 28	13
photo 31	13
photo 27	13
photo 22	13
photo 30	13
photo 23	14
photo 15	14

photo 26	14
photo 05	14
photo 34	14
photo 06	14
photo 10	15
photo 09	15
photo 07	15
photo 17	15
photo 12	15
photo 24	15
photo 19	16
photo 20	16
photo 25	16
photo 11	16
photo 32	16
photo 08	16
photo 14	17
CONTACTS	18
Contact details	18
Telephones	18
Office hours	18
Address	18

SPECIFICATIONS

Overview

The First 36.7 was named Boat of the Year by Sailing World and one of the 10 Best Boats by SAIL Magazine, - the First 36.7 by Farr Yacht Design is a competitive One Design and mixed fleet racer and is outfitted with some of the finest available equipment. The First 36.7 is the perfect choice for racers who want optimum performance along with the value and comfort of a cruiser.

Natalie J, is a 2007 First 36.7 that has been very well cared for. A fresh-water only boat, the owner has spared no expense in outfitting this boat. The hull, keel and structures have been professionally templated and faired to Farr Yacht Designs drawings. Her interior has blond Alpi Wood with Durasuede covered cushions.

She is equipped with the newer, upgraded pedestal set-up at the helm with a 54" double-spoked wheel, updated Volvo sail-drive engine, and many other features. All rigging has been upgraded to optimized to class standards and all of the racing modifications have been done. Carbon Fiber Spinnaker Pole and a full complement of Quantum Carbon/Kevlar Sails used for only 2 weekend regattas. Natalie J is clearly one of the best equipped First 36.7 on the market today.

Basic Information

Category: Racing Sailboat

Model Year: 2007

Year Built: 2007

Country: United States

Dimensions

LOA: 36' 0" (10.97m)

LWL: 30' 3" (9.22m)

Beam: 11' 4" (3.45m)

Speed, Capacities and Weight

Cruise Speed: 7.8 Kts. (9 MPH)

Max Speed: 8.2 Kts. (9 MPH)

Water Capacity: 36 Gallons

Holding Tank: 10 Gallons

Fuel Capacity: 20 Gallons

Accommodations

Total Cabins: 3

Total Heads: 1

Hull and Deck Information

Hull Material: Fiberglass

Engine Information

Engines: 1

Manufacturer: Volvo Penta

Model: D130

Engine Type: Sail Drive

Fuel Type: Diesel

DETAILED INFORMATION

Overview

Standard Boat w/Selected Factory-Supplied Equipment

- New Light Stained Varnished Interior
- Bulkheads Bonded 360 Degrees to Hull & Deck
- 29HP Volvo Diesel 2030 Saildrive
- Geared Folding Propeller
- Black Mast & Boom
- Sparcraft Double Spreader Tapered Fractional Rig Racing Mast
- SS Rod Rigging, except Backstay
- 2 Lewmar Alloy 2 Speed Self-Tailing #40 Cabintop Winches
- 2 Lewmar Alloy 2 Speed Self-Tailing #48 Sheet Winches
- Cascading Backstay 48:1
- Mainsheet Coarse & Fine Tune Tackles
- Lewmar Offshore, Spinlock & Wichard Deck Hardware
- Removable Cockpit Lockers
- Removable SS Stem Roller
- Composite Fiber Rudder Stock
- Self-aligning Rudder Roller Bearings
- Oversize Double-Spoke 54" Lewmar Destroyer Wheel Powercoated Red
- Compass on Binnacle
- Emergency Tiller
- Sit Down Nav Station w/ Chart Table
- Fully Molded Head Compartment
- Shower with Sump Pump
- AM/FM/CD Stereo
- 2 Salon & 2 Cockpit Speakers
- Telescoping Swim Ladder
- Rigid Sparcraft Boom Vang w/ Double Aft Leads
- Adjustable Genoa Cars with Tackles
- Hot & Cold Pressure Water with Shower
- 79 Gallons of Fresh Water in 2 Tanks
- 12 Volt Electric Refrigeration
- Manual & Electric Bilge Pumps
- Two 12 Volt Batteries
- 110 Volt Shore Power
- 110 Volt Shore Power Cord
- 20 Amp Battery Charger

- 8 Lewmar Opening Ports with Shades
- 4 Lewmar Opening Hatches
- Shades on Two Large Hatches
- 2 Burner Propane Stove with Oven
- Cold Cockpit Shower
- Harken Roller Furling
- Harken Carbofoil Headsail Luff System (not installed)
- Deep Draft Lead Racing Keel
- Spinnaker Gear with Two Halyards
- Carbon Spinnaker Pole

Accommodations

The First 36.7 achieved great popularity in North America primarily because of the dual nature of its Characteristics. More Racer than Cruiser, Stingray is fast around the marks - yet has many of the accommodations reserved for cruising and entertaining aboard. With over 250 boats manufactured in North America and close to 500 worldwide the 36.7 will not disappoint.

One cabin forward, 2 aft cabins, 1 head, L-shaped galley.

Galley

- Headroom: 6' 2" throughout the main cabin and galley
- Laminated work surface with molded wood fiddle also serving as handrail.
- Stainless steel double sink.
- Mixer tap with hot and cold pressurized water.
- Stowage under sink, with baskets.
- Cutlery drawer.
- 12 V refrigeration unit insulated with injected polyurethane foam, with storage baskets.
- Gimballed stainless steel 2-burner stove top with oven and stainless steel safety rail also serving as handrail. (10 lb. Propane canister) (Never Used)
- Stowage lockers for utensils, crockery and food.
- 1 handrail.

Deck

The deck is balsa sandwich construction (glass fibre, balsa, polyester resin) for an enhanced strength/weight ratio and for good thermal and sound insulation.

A roughened non-slip surface increases safety over all areas of movement on deck.

An inner deck molding is sealed to the deck to round off the finish.

Access ports are available to service critical deck hardware.

Hull

The hull is Solid Fiberglass GRP.

A structural inner molding with unidirectional fabric is bonded and laminated to the hull. Its structural role is important as it takes and absorbs the stresses at pressure points (chain plate tie rods, keel, rudder etc.) spreading these and thereby guaranteeing reduced strain on the hull. The surface to the inner hull makes cleaning easier and provides a better finish.

Custom Upgrade: Professionally done, custom finished epoxy bottom; keel faired to OD specs and burnished to a glass-like finish. Race bottom: all through hulls finished flush; centerline knot meter finished flush and saildrive gasket plate. A \$15,000.00 upgrade.

Cockpit

- Spacious cockpit with a variety of stowage, and electronic navigation equipment:
- Teak slatted cockpit seats.
- Two removable cockpit Seats (In Storage)
- Stowage locker aft to starboard.
- Gas locker aft to port.
- Teak slatted helm seat (In Storage)
- Steering wheel console.
- GRP footholds.
- Steering compass on console.
- Self-draining cockpit.

Sail Inventory

- Newer Quantum Class sails used for only 2 weekend regattas
- One-Design Sails: Year/MakerDescription:
- Quantum Main (carbon/kevlar)
- Quantum #1 Genoa (carbon/Kevlar)
- Doyle #3 Jib (carbon/Kevlar)
- Quantum 0.5 oz. Spinnaker
- Doyle 0.75 oz Spinnaker
- Extra Sails:
- Two 0.5 oz. Spinnaker
- Roller Furling #1 Genoa (carbon/Kevlar)

Rigging

- Black Anodized aluminum Sparcraft Mast and boom.
- Rod Rigging
- Harken carbo-foil Double-Grooved Forestay (Currently not Installed)
- Harken Roller Furling (New 2018)

Rig Dimensions

I - 46 ft 5 in

J - 13'0"

P - 45'5"

E - 15'7"

Electrical Supply and management:

- 1 x 70 Amp 12 V engine battery.
- 1 x 70 Amp 12 V service battery.
- Voltmeter for power distributor.
- 12 V - 12 switch electrical panel with breaker.

Navigation lights:

- 1 bi-color bow navigation light.
- 1 white stern light.
- 1 anchor light.

Electronics

- TackTick Race Master Mast Mount Display
- Garmin GPSmap 440 at Nav Station
- Raymarine ST60 Wind
- Raymarine Graphic Display
- Raymarine Tri Data
- RayMarine Compass Display
- ICOM VHF Radio at Nav Station with RAM mic installed at helm.
- Sony AM/FM CD

Engine Mechanical

29 HP Volvo Sail Drive engine.

Engine compartment insulated and sound-proofed with honeycomb foam.

Rotomoulded fuel tank with approx. 75 L capacity and sediment filter.

Batteries (2018)

Safety Equipment

- Open bow pulpit with 3 supports
- Navigation lights fitted to pulpit
- Stainless steel lifelines surround the boat.
- 8 stainless steel stanchions with flush molded stainless steel bases

- Teak toerails surrounding the deck. One-Design **Upgrade**: Toe rails planed and sanded to OD class specifications.
- Two stainless steel handrails bolted
- to the coachroof.

Other Details/Equipment

This boat is also equipped with many extras including:

- 54" Lewmar Destroyer Wheel Powercoated Red
- Sunbrella Lifeline Covers
- Padded Spinnaker Pole Cover
- Boom Mount Spinnaker Bag

Docking/Safety Gear

- Fenders
- Dock Lines
- Horn
- Lifesling
- Boat Hook
- Anchor with Chain/Rode
- Flare Kit
- 4 Life Vests
- 2 Fire Extinguishers

Exclusions

Owner's personal belongings.

Disclaimer

The Company offers the details of this vessel or yacht in good faith but cannot guarantee or warrant the accuracy of this information nor warrant the condition of the vessel. A buyer should instruct his representatives, agents, or his surveyors, to investigate such details as the buyer desires validated. This vessel or yacht is offered subject to prior sale, price change, or withdrawal without notice.

PHOTOS

photo 02



photo 03



photo 04



photo 33



photo 16



photo 18



photo 21



photo 28



photo 31



photo 27



photo 22



photo 30



photo 23



photo 15

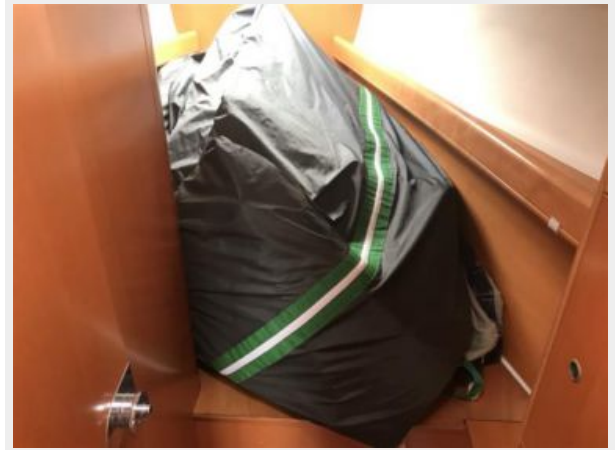


photo 26



photo 05



photo 34

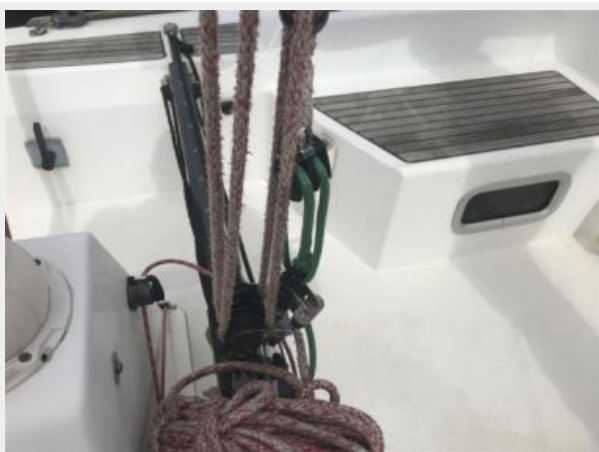


photo 06



photo 10

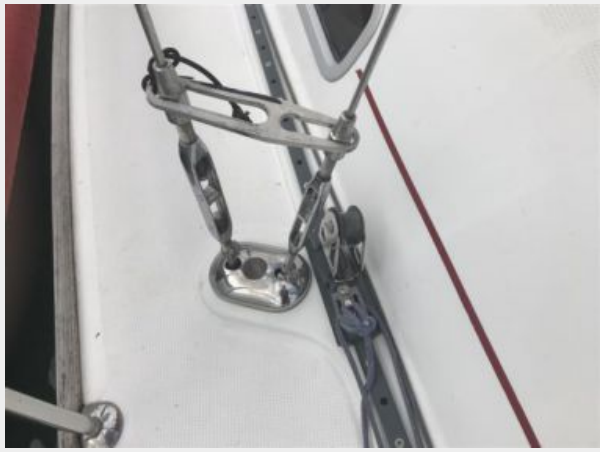


photo 09



photo 07

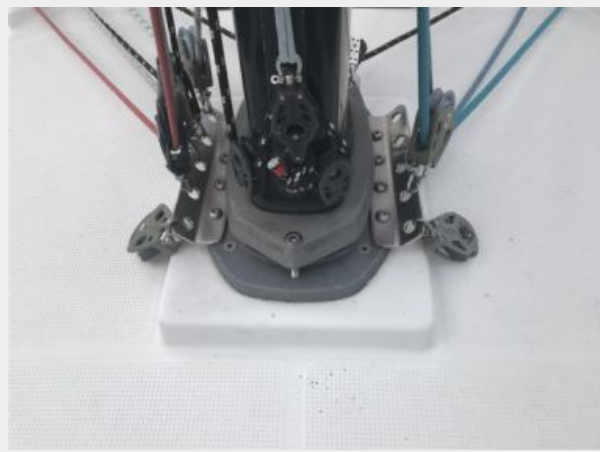


photo 17



photo 12



photo 24



photo 19

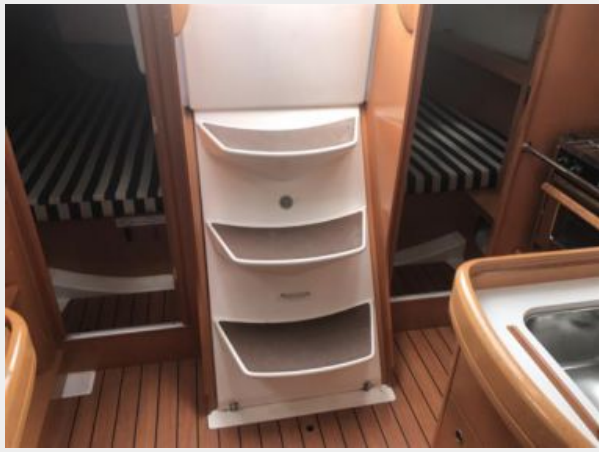


photo 20



photo 25



photo 11



photo 32

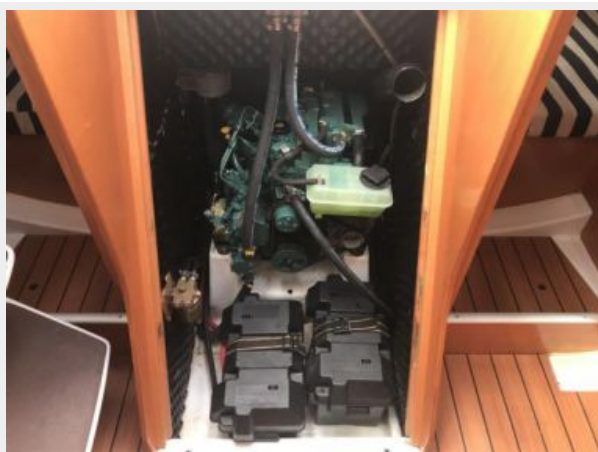


photo 08



photo 14



CONTACTS

Andrey Shestakov, leading yacht broker of the sales department of Shestakov Yacht Sales Inc. Shestakov Yacht Sales Inc., the official representative of the Miami/Fort Lauderdale FL headquarters.

Contact details

Email: andrey@shestakovyachtsales.com

Web: shestakovyachtsales.com/en/

Telephones

USA: +1(954)274-4435

Office hours

Monday – Saturday: **9:00 - 21:00** EDT

Sunday: **closed**

Address



Harbour Towne Marina, 850 NE 3rd St,
STE 213, Dania, FL 33004