

NATALIE J — BENETEAU



Судостроитель: BENETEAU

Год постройки: 2007

Модель: Гоночная яхта

Цена: **ЦЕНА ЯХТЫ ПО ЗАПРОСУ**

Местонахождение: United States

Длина общая: 36' 0" (10.97m)

Ширина: 11' 4" (3.45m)

Крейс. скорость: 7.8 Kts. (9 MPH)

Макс. скорость: 8.2 Kts. (9 MPH)

Купить **Natalie J — BENETEAU** а также выбрать подходящую вам яхту из нашего каталога яхт вам поможет опытный яхтенный брокер Андрей Шестаков. На сегодняшний день компания **Shestakov Yacht Sales Inc.** имеет большое количество яхт в собственном списке продаж, а также тесно сотрудничает со всеми крупными яхтенными производителями по всему миру.

Для того чтобы купить яхту **Natalie J — BENETEAU** а также проконсультироваться по любому вопросу связанному с покупкой, продажей, чартером яхт позвоните по телефону **+7(918)465-66-44**.

ОГЛАВЛЕНИЕ

ОГЛАВЛЕНИЕ	2
ХАРАКТЕРИСТИКИ	4
Обзор	4
Основная информация	4
Размеры	4
Скорость, вместимость и масса	5
Размещение	5
Корпус и палуба	5
Информация о двигателе	5
ПОДРОБНОЕ ОПИСАНИЕ	6
Overview	6
Исключения	11
Отказ от ответственности	11
ФОТОГРАФИИ	13
photo 03	13
photo 02	13
photo 33	13
photo 04	13
photo 16	13
photo 18	13
photo 21	14
photo 28	14
photo 31	14
photo 27	14
photo 22	14
photo 30	14
photo 23	15
photo 15	15

photo 26	15
photo 05	15
photo 34	15
photo 06	15
photo 10	16
photo 09	16
photo 07	16
photo 17	16
photo 12	16
photo 24	16
photo 19	17
photo 20	17
photo 25	17
photo 11	17
photo 32	17
photo 08	17
photo 14	18
КОНТАКТЫ	19
Контактная информация	19
Телефоны	19
Время работы	19
Адрес	19

ХАРАКТЕРИСТИКИ

Обзор

The First 36.7 was named Boat of the Year by Sailing World and one of the 10 Best Boats by SAIL Magazine, - the First 36.7 by Farr Yacht Design is a competitive One Design and mixed fleet racer and is outfitted with some of the finest available equipment. The First 36.7 is the perfect choice for racers who want optimum performance along with the value and comfort of a cruiser.

Natalie J, is a 2007 First 36.7 that has been very well cared for. A fresh-water only boat, the owner has spared no expense in outfitting this boat. The hull, keel and structures have been professionally templated and faired to Farr Yacht Designs drawings. Her interior has blond Alpi Wood with Durasuede covered cushions.

She is equipped with the newer, upgraded pedestal set-up at the helm with a 54" double-spoked wheel, updated Volvo sail-drive engine, and many other features. All rigging has been upgraded to optimized to class standards and all of the racing modifications have been done. Carbon Fiber Spinnaker Pole and a full complement of Quantum Carbon/Kevlar Sails used for only 2 weekend regattas. Natalie J is clearly one of the best equipped First 36.7 on the market today.

Основная информация

Тип судна: Гоночная яхта

Модельный год: 2007

Год постройки: 2007

Страна: United States

Размеры

Длина общая: 36' 0" (10.97m)

Длина по ватерлинии: 30' 3" (9.22m)

Ширина: 11' 4" (3.45m)

Скорость, вместимость и масса

Крейс. скорость: 7.8 Kts. (9 MPH)

Макс. скорость: 8.2 Kts. (9 MPH)

Вместимость воды: 36 Gallons

Вместимость сточного бака: 10 Gallons

Объем топливного бака: 20 Gallons

Размещение

Всего кают: 3

Всего ком. состава: 1

Корпус и палуба

Материал корпуса: Fiberglass

Информация о двигателе

Двигатели: 1

Производитель: Volvo Penta

Модель: D130

Тип двигателя: Sail Drive

Тип топлива: Diesel

ПОДРОБНОЕ ОПИСАНИЕ

Overview

Standard Boat w/Selected Factory-Supplied Equipment

- New Light Stained Varnished Interior
- Bulkheads Bonded 360 Degrees to Hull & Deck
- 29HP Volvo Diesel 2030 Saildrive
- Geared Folding Propeller
- Black Mast & Boom
- Sparcraft Double Spreader Tapered Fractional Rig Racing Mast
- SS Rod Rigging, except Backstay
- 2 Lewmar Alloy 2 Speed Self-Tailing #40 Cabintop Winches
- 2 Lewmar Alloy 2 Speed Self-Tailing #48 Sheet Winches
- Cascading Backstay 48:1
- Mainsheet Coarse & Fine Tune Tackles
- Lewmar Offshore, Spinlock & Wichard Deck Hardware
- Removable Cockpit Lockers
- Removable SS Stem Roller
- Composite Fiber Rudder Stock
- Self-aligning Rudder Roller Bearings
- Oversize Double-Spoke 54" Lewmar Destroyer Wheel Powercoated Red
- Compass on Binnacle
- Emergency Tiller
- Sit Down Nav Station w/ Chart Table
- Fully Molded Head Compartment
- Shower with Sump Pump
- AM/FM/CD Stereo
- 2 Salon & 2 Cockpit Speakers
- Telescoping Swim Ladder
- Rigid Sparcraft Boom Vang w/ Double Aft Leads
- Adjustable Genoa Cars with Tackles
- Hot & Cold Pressure Water with Shower
- 79 Gallons of Fresh Water in 2 Tanks
- 12 Volt Electric Refrigeration
- Manual & Electric Bilge Pumps
- Two 12 Volt Batteries
- 110 Volt Shore Power
- 110 Volt Shore Power Cord
- 20 Amp Battery Charger

- 8 Lewmar Opening Ports with Shades
- 4 Lewmar Opening Hatches
- Shades on Two Large Hatches
- 2 Burner Propane Stove with Oven
- Cold Cockpit Shower
- Harken Roller Furling
- Harken Carbofoil Headsail Luff System (not installed)
- Deep Draft Lead Racing Keel
- Spinnaker Gear with Two Halyards
- Carbon Spinnaker Pole

Accommodations

The First 36.7 achieved great popularity in North America primarily because of the dual nature of its Characteristics. More Racer than Cruiser, Stingray is fast around the marks - yet has many of the accommodations reserved for cruising and entertaining aboard. With over 250 boats manufactured in North America and close to 500 worldwide the 36.7 will not disappoint.

One cabin forward, 2 aft cabins, 1 head, L-shaped galley.

Galley

- Headroom: 6' 2" throughout the main cabin and galley
- Laminated work surface with molded wood fiddle also serving as handrail.
- Stainless steel double sink.
- Mixer tap with hot and cold pressurized water.
- Stowage under sink, with baskets.
- Cutlery drawer.
- 12 V refrigeration unit insulated with injected polyurethane foam, with storage baskets.
- Gimballed stainless steel 2-burner stove top with oven and stainless steel safety rail also serving as handrail. (10 lb. Propane canister) (Never Used)
- Stowage lockers for utensils, crockery and food.
- 1 handrail.

Deck

The deck is balsa sandwich construction (glass fibre, balsa, polyester resin) for an enhanced strength/weight ratio and for good thermal and sound insulation.

A roughened non-slip surface increases safety over all areas of movement on deck.

An inner deck molding is sealed to the deck to round off the finish.

Access ports are available to service critical deck hardware.

Hull

The hull is Solid Fiberglass GRP.

A structural inner molding with unidirectional fabric is bonded and laminated to the hull. Its structural role is important as it takes and absorbs the stresses at pressure points (chain plate tie rods, keel, rudder etc.) spreading these and thereby guaranteeing reduced strain on the hull. The surface to the inner hull makes cleaning easier and provides a better finish.

Custom Upgrade: Professionally done, custom finished epoxy bottom; keel faired to OD specs and burnished to a glass-like finish. Race bottom: all through hulls finished flush; centerline knot meter finished flush and saildrive gasket plate. A \$15,000.00 upgrade.

Cockpit

- Spacious cockpit with a variety of stowage, and electronic navigation equipment:
- Teak slatted cockpit seats.
- Two removable cockpit Seats (In Storage)
- Stowage locker aft to starboard.
- Gas locker aft to port.
- Teak slatted helm seat (In Storage)
- Steering wheel console.
- GRP footholds.
- Steering compass on console.
- Self-draining cockpit.

Sail Inventory

- Newer Quantum Class sails used for only 2 weekend regattas
- One-Design Sails: Year/MakerDescription:
- Quantum Main (carbon/kevlar)
- Quantum #1 Genoa (carbon/Kevlar)
- Doyle #3 Jib (carbon/Kevlar)
- Quantum 0.5 oz. Spinnaker
- Doyle 0.75 oz Spinnaker
- Extra Sails:
- Two 0.5 oz. Spinnaker
- Roller Furling #1 Genoa (carbon/Kevlar)

Rigging

- Black Anodized aluminum Sparcraft Mast and boom.
- Rod Rigging
- Harken carbo-foil Double-Grooved Forestay (Currently not Installed)
- Harken Roller Furling (New 2018)

Rig Dimensions

I - 46 ft 5 in

J - 13'0"

P - 45'5"

E - 15'7"

Electrical Supply and management:

- 1 x 70 Amp 12 V engine battery.
- 1 x 70 Amp 12 V service battery.
- Voltmeter for power distributor.
- 12 V - 12 switch electrical panel with breaker.

Navigation lights:

- 1 bi-color bow navigation light.
- 1 white stern light.
- 1 anchor light.

Electronics

- TackTick Race Master Mast Mount Display
- Garmin GPSmap 440 at Nav Station
- Raymarine ST60 Wind
- Raymarine Graphic Display
- Raymarine Tri Data
- RayMarine Compass Display
- ICOM VHF Radio at Nav Station with RAM mic installed at helm.
- Sony AM/FM CD

Engine Mechanical

29 HP Volvo Sail Drive engine.

Engine compartment insulated and sound-proofed with honeycomb foam.

Rotomoulded fuel tank with approx. 75 L capacity and sediment filter.

Batteries (2018)

Safety Equipment

- Open bow pulpit with 3 supports
- Navigation lights fitted to pulpit
- Stainless steel lifelines surround the boat.
- 8 stainless steel stanchions with flush molded stainless steel bases

- Teak toerails surrounding the deck. One-Design **Upgrade**: Toe rails planed and sanded to OD class specifications.
- Two stainless steel handrails bolted
- to the coachroof.

Other Details/Equipment

This boat is also equipped with many extras including:

- 54" Lewmar Destroyer Wheel Powercoated Red
- Sunbrella Lifeline Covers
- Padded Spinnaker Pole Cover
- Boom Mount Spinnaker Bag

Docking/Safety Gear

- Fenders
- Dock Lines
- Horn
- Lifesling
- Boat Hook
- Anchor with Chain/Rode
- Flare Kit
- 4 Life Vests
- 2 Fire Extinguishers

Исключения

При продаже яхты исключаются личные вещи владельца.

Отказ от ответственности

Компания предоставляет описание судна или яхты добросовестно, но не может гарантировать точность этой информации, а также не ручается за техническое состояние. Покупатель должен проинструктировать своих агентов или оценщиков исследовать представленную информацию более подробно, по собственному желанию. Продажа судна или яхты, изменение цены или снятие с продажи будет происходить без

предварительного уведомления.

ФОТОГРАФИИ

photo 02



photo 03



photo 04



photo 33



photo 16



photo 18



photo 21



photo 28



photo 31



photo 27



photo 22



photo 30



photo 23



photo 15

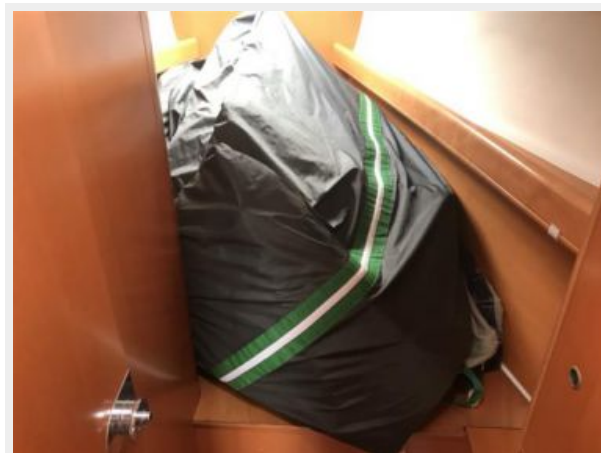


photo 26



photo 05



photo 34

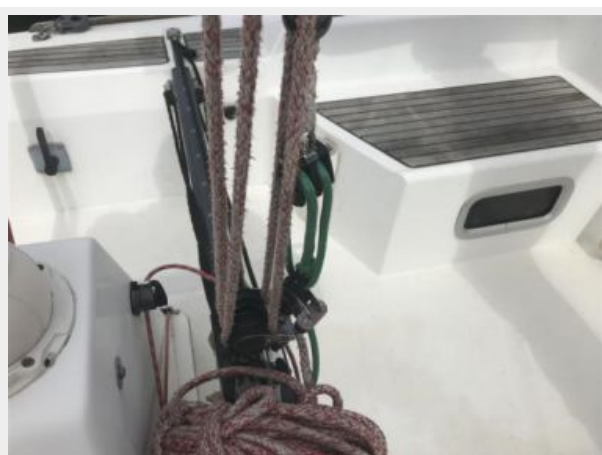


photo 06



photo 10

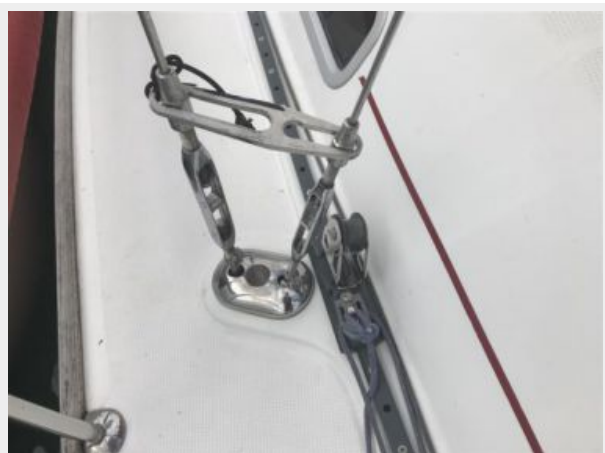


photo 09



photo 07

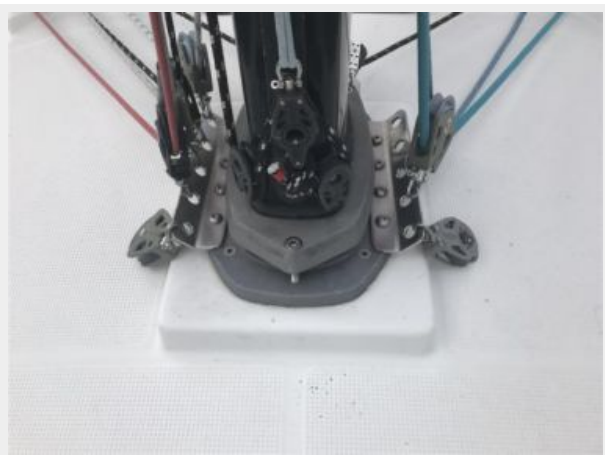


photo 17



photo 12



photo 24



photo 19

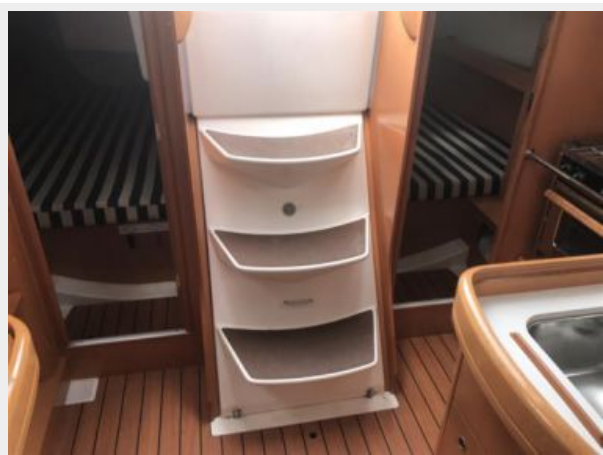


photo 20



photo 25



photo 11



photo 32

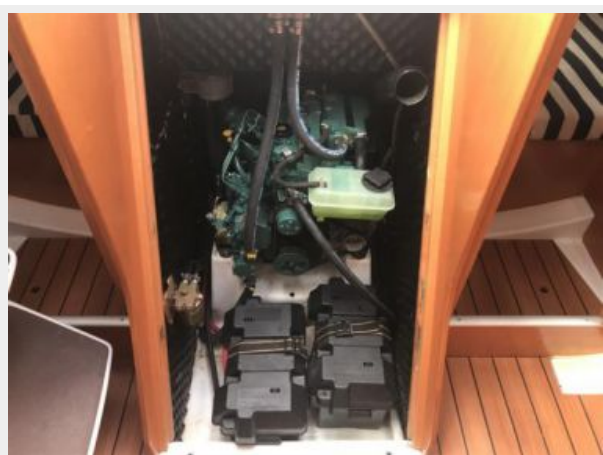


photo 08



photo 14



КОНТАКТЫ

Андрей Шестаков (Andrey Shestakov) – ведущий яхтенный брокер отдела продаж яхт и судов компании Shestakov Yacht Sales Inc. Официальный представитель Shestakov Yacht Sales Inc. для русскоговорящих клиентов в центральном офисе компании в Майами/Форт Лодердейл/Флорида/США.

Контактная информация

Email: andrey@shestakovyachtsales.com

Web: shestakovyachtsales.com

Телефоны

Краснодарский край: **+7(918)465-66-44**

США, Майами, Флорида: **+1(954)274-4435**

Время работы

Понедельник – Суббота: **9:00 - 21:00**
EDT

Воскресенье: **Закрыто**

Адрес



Harbour Towne Marina, 850 NE 3rd St,
STE 213, Dania, FL 33004