

ANGELUS — SUNSEEKER



Builder: SUNSEEKER

Year Built: 2019

Model: Motor Yacht

Price: PRICE ON APPLICATION

Location: France

LOA: 132' 0" (40.23m)

Beam: 26' 7" (8.10m)

Max Draft: 8' 1" (2.46m)

Cruise Speed: 17 Kts. (20 MPH)

Max Speed: 25 Kts. (29 MPH)

Our experienced yacht broker, Andrey Shestakov, will help you choose and buy a yacht that best suits your needs **ANGELUS — SUNSEEKER** from our catalogue. Presently, at Shestakov Yacht Sales Inc., we have a wide variety of yachts available on our sale's list. We also work in close contact with all the big yacht manufacturers from all over the world.

If you would like to buy a yacht **ANGELUS — SUNSEEKER** or would like help answering any questions concerning purchasing, selling or chartering a yacht, please call **+1(954)274-4435**

TABLE OF CONTENTS

TABLE OF CONTENTS	2
SPECIFICATIONS	3
Overview	3
Basic Information	3
Dimensions	3
Speed, Capacities and Weight	4
Accommodations	4
Hull and Deck Information	4
Engine Information	4
DETAILED INFORMATION	5
Overview	5
Technical Details	5
Exclusions	13
Disclaimer	13
PHOTOS	14
CONTACTS	24
Contact details	24
Telephones	24
Office hours	24
Address	24

SPECIFICATIONS

Overview

ANGELUS is the latest Sunseeker 40m on the market & with only 200 original hours, she is in better than new condition with the kinks worked out.

ANGELUS features a two master layout with a private owner's deck where the sky lounge is typically located while the second larger master is located forward on the main deck.

She carries a larger tender in her garage plus 2 full size jet skis.

Considering ANGELUS has over €2m in upgrades & options and an aggressive asking price, she is seriously for sale.

Take advantage of this opportunity to buy a new 2019 Sunseeker 131 with all owner's supplies included and the kinks worked out.

Basic Information

Category: Motor Yacht

Model Year: 2019

Year Built: 2019

Country: France

Dimensions

LOA: 132' 0" (40.23m)

LWL: 102' 4" (31.19m)

Beam: 26' 7" (8.10m)

Max Draft: 8' 1" (2.46m)

MFG Length: 131' 5" (40.06m)

Speed, Capacities and Weight

Cruise Speed: 17 Kts. (20 MPH)

Cruise Speed Range: 1500

Max Speed: 25 Kts. (29 MPH)

Gross Tonnage: 345 Pounds

Water Capacity: 1373.6946704 Gallons

Holding Tank: 94.309422564 Gallons

Fuel Capacity: 7555.3206872 Gallons

Accommodations

Total Cabins: 6

Sleeps: 12

Total Heads: 7

Crew Cabin: 4

Crew Sleeps: 8

Hull and Deck Information

Hull Material: GRP

Hull Configuration: Semi-Displacement

Engine Information

Engines: 2

Manufacturer: MTU

Model: 12V 4000 M93

Engine Type: Inboard

Fuel Type: Diesel

DETAILED INFORMATION

Overview

ANGELUS is the latest Sunseeker 40m on the market & having been delivered in Summer 2019 and with only 250 original hours she is in better than new condition with the kinks worked out.

ANGELUS sleeps up to 14 guests in 6 staterooms and features a two master layout with a private owner's deck where the sky lounge is typically located while the second larger master is located forward on the main deck.

Her main salon has sliding glass doors that open up to allow a great cross breeze. Her salon has a full bar located back aft which services both the interior & exterior of the main deck. Formal dining is located just forward of the salon and has direct access to the chef commercial grade galley.

She carries a larger Williams diesel jet tender in her garage plus 2 full size jet skis. With a touch of the button the garage opens and converts to a beach club when not in filled with toys. There is also a hydraulic swim platform allowing for easy access to the water and ease of launching & retrieval of the tenders and jet skis.

A highlight of ANGELUS is her sundeck that has a full bar, work out equipment and infinity jacuzzi with waterfall surrounded by sundapads. A large hard top provides shade for the multiple sitting areas.

The bow on this next generation 131 Sunseeker has a full sitting area, massive sundaes, and a hydraulic hatch the opens to reveal the rescue tender.

Considering ANGELUS has over €2m in upgrades & options and an aggressive asking price, she is seriously for sale.

Take advantage of this opportunity to buy a new 2019 Sunseeker 131 with all owner's supplies included with immediate deliver

Technical Details

Exterior

- Teak Decking on the Skydeck Teak Decking on the Forepeak
- Medium Tinted film to side windows and sliding doors
- Underwater lights x15
- GRP privacy coaming in the Main Deck Aft Cockpit in lieu of the aft safety rails
- Stainless Steel removable safety rails around perimeter of bathing platform
- Plug in stainless steel removable overhead shower stand with socket on the stern platform.

One on each side of the platform (two in total)

- Six Additional Underwater lights. Lumishore white LED giving a total of 21 light, 8 on each side and 5 on the transom
- Black Fender Socks (10 off)
- Reduce the gap of the teak planks on the bathing platform from 25 mm to 15 mm
- External area ceiling panels to be made from Ply which is lacquered and then over painted
- Illuminated yacht name ANGELUS

Interior

- Exclusive imported marbles and heated floor in all ensuites (€370,000)
- Air Conditioning Marine Air chilled water system to Tropical specification and with quieter running WhisperCool DC fans Air Conditioning for the engine room
- Vimar ByMe Interior Premium Lighting System Package
- Sunseeker Leather Owner Accessory set
- Air Conditioning Marine Air chilled water system to Gulf specification and with quieter running WhisperCool DC fans
- Wenge Wood interior items
- Wood Flooring in Main deck Saloon, Dining area and Main deck Guest Lobby with inset carpets
- domestic water cooler system
- UV air Purifier for AC in Master cabins, 4 lower guest cabins and galley
- Upgrade from standard range of curtain fabrics to designer selected curtain fabrics

Salon

- Main Deck Saloon sliding door on the port side
- Main Deck Saloon sliding door on the starboard side
- Dark Tinted film to side windows and sliding doors in Johnsons IR35 and the windscreen to have IR85 in the Saloon
- Main Deck Saloon stern sliding patio doors. Electric operation.
- Main Deck side pation door electric operation curtains (both sides)
- Main Deck Forward dining area shelving unit to have back lit onyx panels
- Mounting of Dining area Feature light unit
- Main Deck Master Cabin TV surround in Ludovico Mascheroni Nabucco 3405 Leather

Accommodations

- Second Set of 570 thread count Egyptian cotton sheets for all guest cabins
- Electrically operated Black out Blinds for the Master Stateroom Port Aft Guest Stateroom

Starboard Aft Guest Stateroom Port Forward Guest Stateroom and the Starboard Forward Guest Stateroom.

- Comprising of quilted mattress protector fitted bottom sheet flat top sheet housewife and oxford style pillowcases for all berths
- Additional Pullman berth option installed on the inboard bulkhead for the Port Forward Twin Guest Stateroom
- Additional Pullman berth option installed on the inboard bulkhead for the Starboard Forward Twin Guest Stateroom
- Inboard and outboard berths both slid to centre of cabin to create double berth - Ensure that bed linen is ordered for both double and single set up. Infill is supplied for double set up plus track infills to be supplied
- Hand shower with trigger control head fitted next to toilet in all toilet compartments with hidden mixer valve from hot and cold supply.
- Change Upper Deck Saloon into Second Master Cabin
- All Guest Bathrooms to have Underfloor heating
- Fabric upgrade for guest bed bolsters
- Under Floor Electric heating in Day Head
- LED shower heads in the 6 guest bathroom
- Fit 1 off VIMAR IR receiver in each cabin and supply one off remote control to operate any electric
- Electric Roman blinds in the 4 off lower deck guest cabins (1 blind per cabin)
- Stbd Double guest cabin Headboard is to be as detailed in drawing and using Colony Roma Sogi
- Port Double guest cabin Headboard is to be as detailed in drawing and using Dedar Abacus
- Port Twin guest cabin Headboards are to be as detailed in drawing and using Dedar Shimmer
- Stbd Twin guest cabin Headboards are to be as detailed in drawing and using

Main Deck Master

- Main Deck Master cabin Electric Day roller blinds (6 blinds in total)
- Main Deck dining windows electric day roman blinds (2 blinds)
- Main Deck dining windows electric Night roman blinds (2 blinds)
- Main Deck Master Cabin Feature Headboard Main Deck Master cabin Electric night curtains (2 Curtains)

Upper Deck Master

- Curtain and blinds upgraded fabrics and electric blinds

- Aft Patio door manual day curtain in Dedar Anna Bianco
- Electric blackout roller blinds for Upper Deck Master cabin for side windows
- Upper Deck Master Cabin feature Headboard Upper Deck Master cabin Electric Day Roller Blind for Port and Stbd side windows (6 blinds in total)
- Upper Deck Master cabin Electric Night curtains for Port and Stbd side windows (2 curtains)

Upper Deck

- Retractable electric sun awning to cover the upper deck aft cockpit
- Upper Deck Saloon stern sliding patio doors. Electric operation.
- Sink and fridge on Upper Deck cockpit bar unit
- 42" Video Tree TV on flybridge
- Induction Hob on Flybridge bar
- larger BBQ on flybridge bar
- Sail canopies (2 off) with 4 off carbon poles required for Upper Deck Aft Cockpit

Wheel House

- Safe concealed in cabinetry (24.5 lbs. W360mm x H190mm x D410mm) on the Wheelhouse bridge
- Tijssen SMS Paging facility
- Tijssen Swipe card security alarm
- Tijssen CCTV camera system with eight dedicated cameras
- Second helmseat in Wheelhouse
- Satellite Communication system. Sailor 9110 VSAT 103cm (8W BUC 2x MB LNB - Housed in a matching Dome)
- Electronic Chart System upgrades. Transas AIS ARPA and Radar intergration.
- Second Furuno Radar FAR2117-BB High speed X-Band 9GHz 12kW with 4' Open Scanner with Furuno processor RPU-24 and Furuno keyboard RCU-028.
- Furuno ultra sonic wind sensor connected to the Central Navigation Display.
- Five off Halleland Series X 19 1D Maritime multi Displays for Radar Plotter central navigation (Second radar when specified) and Tijssen CCTV display (Sixth display is for the Tijssen Camera system)
- Simrad QS80 autopilot joystick and Trackball for Transas control mounted in the arm rests of the Captains helm seat.
- Wheelhouse sofa Whistler leather upgrade
- Teak flooring in Wheelhouse
- Sail canopy and carbon fiber support poles on Wheel House deck
- Change Wheelhouse Helm seat Besenzoni P242 - to Whistler Leather Portland Auburn

PRT223

Aft Skydeck

- Retractable electric sun awning to cover the aft Skydeck
- Refrigerator. Frigoboat MS 130 stainless steel cabinet for Skydeck bar
- Sky Deck special Hot Tub Sun Pad molding
- Sail canopies (2 off) with 4 off carbon poles required for Sky Deck Aft section

Tender Garage

- Synthetic teak floor covering in tender garage sole in lieu of GRP finish
- U shape seating and table in front of the Sunbather emergency tender garage with cover to match all exterior covers
- Portable air compressor OP20P stored in the engine room with AC 220v power supply sockets in Garage Engine Room and Foredeck
- Tender diesel fueling station with transfer pump from day tank and fuel hose reel in the Garage Space

Tender and Toys

- ONE RXP-X-RS300 AND ONE GTX LTD 300 Jet Skies
- Williams 565 tender with inboard Yanmar (62 Hours)

Machinery

Main Engines 2 x MTU 12V 4000 M93

Speeds Max 25 knots
 Cruise 17 knots

Range 1,500nm at 10 knots

Auxiliary Machinery & Electrical System

Generators Two Kohler 80kW 400/230V 3-phase 50Hz - 80EFOZDJ with sound shields

Electricity AC 220V 50Hz sockets - UK 3 pin

Shore Power	Single 125A plugged flexible cable on electric reeling system
	Single 125A plugged loose flexible 20M cable via fixed inlet
	Connected to shore power converter Atlas 90 kVA-SPA-II series 50Hz
	Input 180-530V single or 3-phase up to 90kVA, output 230/400V 50Hz 3-phase 90kVA

Tank Capacities

Fuel	28,600 litres (7,555 US Gallons)
Water	5,200 litres (1,374 US Gallons)
	Idromar watermakers 180 liters/per hour
Grey/Black Water	1,350 litres (357 US gallons)
Black Water	1,540 liters (383 US gallons)

Ancillary Equipment

Rudder Angle Indicator	Simrad RF45X
Bow Thruster	Hydraulic system 100HP ABT.TRAC 20
Stern Thruster	Hydraulic system 65HP ABT.TRAC 16
Stabilizers	ABT.TRAC 440 digital Fin stabilization system 20X Fin
Fuel Separator	Alfa Laval MIB303 fuel cleaning centrifugal separator 240V 1-phase 50Hz 450 liters per hour
Fire/Bilge Pump	Gianneshi self-priming centrifugal 400V 3 50Hz 7.5kW and secondly Gianneshi self-priming centrifugal pump powered by an independent Diesel engine located in the pump room
Sewage Treatment	ECOMar 32 (3,200 litres per day_ 230V 1-phase 50Hz
Water Closets	Tecma Silent Plus 220 Volt AC macerating toilets
Airconditioning	Marine Air MCG V120 Modular Chiller 4 x 120000BTU Two Marine Air VCD27K (54,000 BTU) self-containing units

Safety & Security Equipment

Fire	Sea-Fire FM-200 H-Series fixed machinery space fire extinguisher system
------	---

Fighting

10 x 6kg Dry Powder fire extinguisher
 6 x 9 litre AFFF Foam fire extinguisher
 1 x 2kg CO2 fire extinguisher
 4 X 5kg CO2 fire extinguisher
 2 x Fireguard fireman outfits
 2 x Drager Panorama breathing apparatus mask
 2 x Drager PA 91 breathing apparatus set
 4 x Drager 6 litre 200 bar steel oxygen cylinders
 2 x Wolf TR 24 AT EX fireman torches
 2 x steel cored fireman safety line
 2 x fireman's axe
 1 x spare AFFF solution
 Fire blanket

Alarms Fireboy-Xintec fire alarm detection system with model 90900 control panel and dedicated smoke/heat detectors in all accommodation areas

Safety McMurdo E5 EPIRB
 McMurdo S4 SART
 Ocean Signal S100 SART
 4 x Hansson Ikaros line throwers including spare rockets & igniters
 6 x Hansson Ikaros rocket flares
 2 x Hansson Ikaros M.O.B smoke and light signals
 22 x SOLAS approved adult automatic lifejacket
 2 x SOLAS approved child lifejacket
 20 x Wessex immersion suit
 20 x Drager Parat C smoke hood
 4 x Zodiac 10 person SOLAS A life raft
 2 x 2.5kg SOLAS lifebuoys
 2 x 4kg SOLAS lifebuoys with MOB light and smoke beacons
 1 x pilot ladder
 2 x Ocean rescue line

Communication Equipment GMDSS Equipped & Certified

Satcom Sailor 6110 Inmarsat C with LRIT
 Cellular System Iridium 955 Satellite phone system with docking station
 VHF Radiotelephones Sailor 622 Class A VHF-DSc

	Simrad RS90 Class D VHF/DSc
	2 x Simrad TC GMDSS VHF Handset
	2 x Icom IC GM1600E and BP234 handheld portable VHF's
MF Radiotelephones	Sailor 6310 MF/HF 150W radiotelephone
Telephone Exchange	Panasonic PABX telephone exchange system KX-TES824

Navigation Equipment

Satellite Compass	Hemisphere GNSS V103
Automatic Pilot	Simrad AP70
Log	Sperry Naviknot 350E with FNFII through hull sensor
Echo Sounder	Furuno FE800 50Hz with 50B-6B transducer
Radar	Furuno radar FAR1518-BB X-Band 9GHz Simrad Halo 4 pulse Compression Radar
Chart Plotter	Transas Navi-Sailor 4000 ECDIS Simrad NSO EVO2 Chart
GPS	Furuno GP170 GPS navigator with GPS antenna
Navtex	Furuno NX700B
Wind Instruments	Furuno ultra sonic wind sensor
Other	Tijssen CCTV camera system with 8 dedicated camera Furuno FA170 Class AID transponder with GPS and VHF antenna

Audio/Visual Entertainment Systems

- Satellite Television System. Seatel 100 TVHD 3 Axis Global including nine Technomate Euro free to air HD decoders
- Aft cockpit waterproof exterior 32" LED HD TV fitted in port side buttress fed from saloon AV
- Extended range 3 or 4G antennas
- Supply and fit Flir M400 25/30Hz PAL / NTSC camera
- Bang and Olufsen partial upgrade to AV system

Domestic Equipment

Sundeck	Icemaker Victrigo Classic and Waeco Coolmatic CR-110
Upper Deck Aft	Waeco CR60 refrigerator
Owner's Suite	HiPro mini-bar
Main Galley	2 x Miele G6460BP single convection oven 1 x Miele M6260TC microwave oven 46 litre 1 x Miele KM6879 induction hob 5 zone - 900mm Custom integrated systemic KE 50-25-4 - 230V 1-phase 50Hz extraction fan Nespresso Krups XN730T coffee machine Icemaker Victrofigo Classic Miele dishwasher PG8056
Main Deck Laundry	Miele washing machine PW6065 PLUS Miele tumble dryer PT7135 C PLUS Miele KWT 6231 UG built in wine cooler
Main Deck Aft	Ice Maker 'Victrofigo Classic'
Crew Mess	Miele refrigerator K9 122UI GB- 137 litres Miele slimline dishwasher G4780 SCVi Miele H600BM combination microwave convention oven
Lower Laundry	Miele washing machine PW6065 PLUS Miele tumble dryer PT135 C PLUS

Exclusions

Owner's personal belongings.

Disclaimer

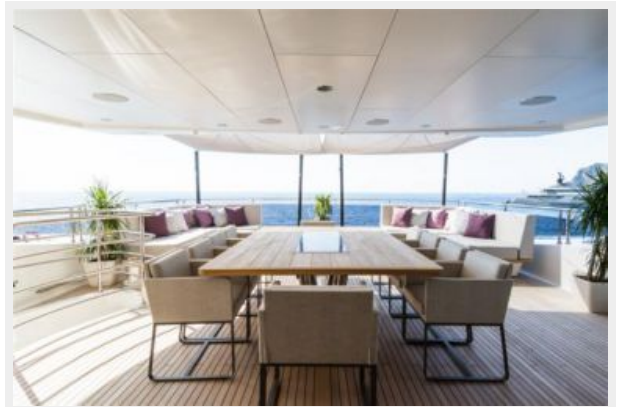
The Company offers the details of this vessel or yacht in good faith but cannot guarantee or warrant the accuracy of this information nor warrant the condition of the vessel. A buyer should instruct his representatives, agents, or his surveyors, to investigate such details as the buyer desires validated. This vessel or yacht is offered subject to prior sale, price change, or withdrawal without notice.

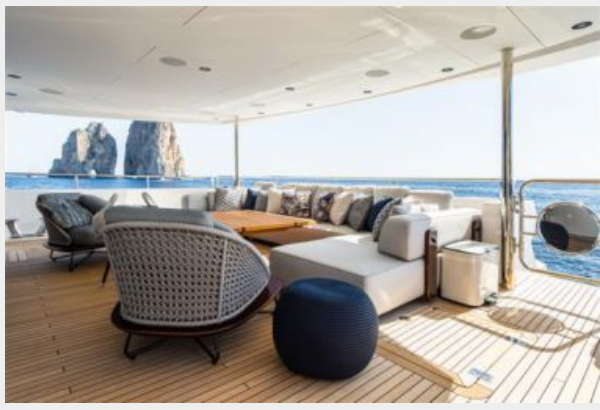
PHOTOS





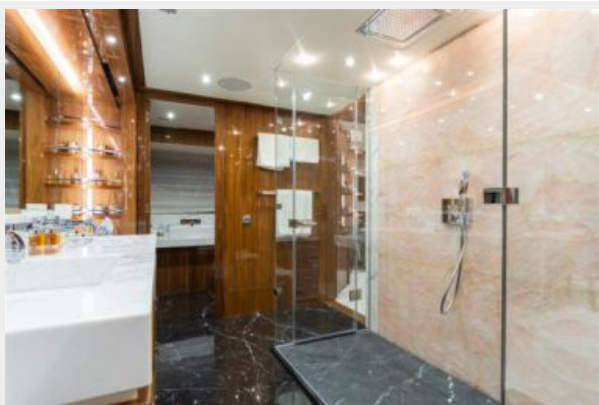


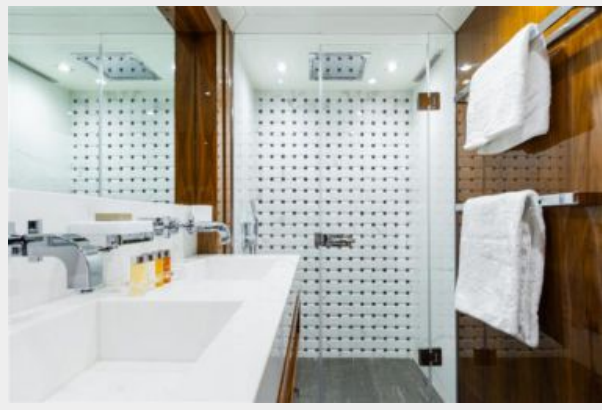


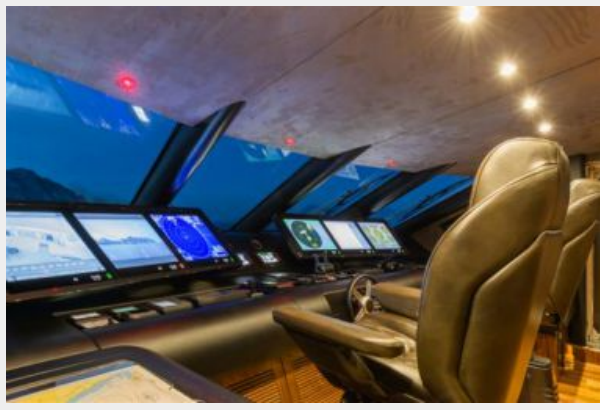












CONTACTS

Andrey Shestakov, leading yacht broker of the sales department of Shestakov Yacht Sales Inc. Shestakov Yacht Sales Inc., the official representative of the Miami/Fort Lauderdale FL headquarters.

Contact details

Email: andrey@shestakovyachtsales.com

Web: shestakovyachtsales.com/en/

Telephones

USA: +1(954)274-4435

Office hours

Monday – Saturday: **9:00 - 21:00** EDT

Sunday: **closed**

Address



Harbour Towne Marina, 850 NE 3rd St,
STE 213, Dania, FL 33004