

BABYDOLL — EVERGLADES



Builder: EVERGLADES

Year Built: 2016

Model: Center Console

Price: PRICE ON APPLICATION

Location: United States

LOA: 43' 0" (13.11m)

Beam: 12' 0" (3.66m)

Min Draft: 2' 4" (0.71m)

Max Draft: 3' 2" (0.97m)

Cruise Speed: 32 Kts. (37 MPH)

Max Speed: 48 Kts. (55 MPH)

Our experienced yacht broker, Andrey Shestakov, will help you choose and buy a yacht that best suits your needs **Babydoll — EVERGLADES** from our catalogue. Presently, at **Shestakov Yacht Sales Inc.**, we have a wide variety of yachts available on our sale's list. We also work in close contact with all the big yacht manufacturers from all over the world.

If you would like to buy a yacht **Babydoll — EVERGLADES** or would like help answering any questions concerning purchasing, selling or chartering a yacht, please call **+1(954)274-4435**

TABLE OF CONTENTS

TABLE OF CONTENTS	2
SPECIFICATIONS	5
Overview	5
Basic Information	5
Dimensions	5
Speed, Capacities and Weight	5
Accommodations	5
Hull and Deck Information	6
Engine Information	6
DETAILED INFORMATION	7
Cabin	7
Deck and Cockpit	7
Fishability	8
Mechanical and Electrical	8
Seating	8
Electronics	9
Upper Helm/Tower	9
Exclusions	9
Disclaimer	9
PHOTOS	11
2	11
3	11
4	11
5	11
6	11
7	11
8	12
9	12

10	12
11	12
12	12
13	12
14	13
15	13
16	13
17	13
18	13
19	13
20	14
21	14
22	14
23	14
24	14
25	14
27	15
26	15
28	15
29	15
30	16
31	16
32	16
33	16
34	16
35	16
36	17
CONTACTS	18
Contact details	18

Telephones	18
Office hours	18
Address	18

SPECIFICATIONS

Overview

Lift Kept, 2016 435 Everglades CC, the only one available with the more reliable and efficient 300HP Yamahas. Extended Warranties on Engines and covered under Everglades 5 year Warranty Program, Dual Station Helm Master, Full Garmin Electronics, FLIR Night Vision, and many more options on this super clean boat!!

Basic Information

Category: Center Console

Model Year: 2016

Year Built: 2016

Country: United States

Dimensions

LOA: 43' 0" (13.11m)

LOD: 42' 8" (13.00m)

Beam: 12' 0" (3.66m)

Min Draft: 2' 4" (0.71m)

Max Draft: 3' 2" (0.97m)

Speed, Capacities and Weight

Cruise Speed: 32 Kts. (37 MPH)

Max Speed: 48 Kts. (55 MPH)

Displacement: 16800 Pounds

Water Capacity: 75 Gallons

Holding Tank: 30 Gallons

Fuel Capacity: 611 Gallons

Accommodations

Total Cabins: 1

Total Berths: 1

Total Heads: 1

Hull and Deck Information

Hull Material: Fiberglass

Hull Configuration: Deep Vee

Hull Color: Black

Engine Information

Engines: 4

Manufacturer: Yamaha

Model: 300

Engine Type: Outboard

Fuel Type: Gas/Petrol

DETAILED INFORMATION

Cabin

- Large Cabin with upgraded Summer Kitchen:
- Frigidaire Microwave
- Isotherm Stainless Refrigerator
- Modern Glass Bowl Sink
- Ample Storage
- Electric Head with Shower
- Water heater
- 20" Flat screen LED TV with DVD
- Queen size bed that converts to a couch
- Faux granite counter tops
- China-bowl head with macerator and holding tank
- Port lights
- Vanity mirror
- Wood grain vanity with solid surface and floor treatments
- Carbon monoxide detector

Deck and Cockpit

- 375ft 5/8 - 8PLAIT 25ft 5/16 chain with swivel and anchor
- Stainless steel plow anchor
- Electric windless
- Hawse pipes with fixed cleats (2)
- Stereo speakers mounted in the deck (4) with (1) subwoofer
- Stainless steel drink holders
- Cockpit coaming bolsters
- Low profile stainless steel bow rails
- Powder-coated toe rails
- Anti-Fatigue helm pad - mocha
- Bilge nets
- Under gunwale leader storage box
- Aft Tackle Center Features an Electric Grill with Fresh Water Sink
- PFD under gunwale storage box (2)
- Mid-ship raw and freshwater spigots
- High/Low electric bow filler table
- Side utility door that opens inboard
- Premier audio package -Fusion 770 control head with Bluetooth and JL M-series speakers, Includes JL amplifier and subwoofer
- Cockpit area - 200sf

Fishability

- Pressurized circulating livewells with lights (2) - 60gal each
- Fish box in floor (fwd.: pump-out) - 225gal
- Fish box/Bait freezer (aft: self-draining) - 45gal
- Stainless steel gunwale flush mounted rod holders bedded and through bolted (13)
- Under gunwale power ports - 30A
- Lockable rod storage
- Command leaning post workstation
- Transom rod holders (6)
- Outrigger quick-cam cleats
- Carbon-fiber outrigger package - 22' poles
- Workstation: Fiberglass molded lid, drawer style tackle boxes with acrylic doors, (4) stainless steel drink holders, (4) leader spool holders, fresh water sink and raw water washdown, (2) cutting boards, built in organizer for tools and knives

Mechanical and Electrical

- Automatic bilge pump: aft (2) - 3700 GPH / fwd. (1) - 2000 GPH
- Sump for gray-water system
- High-water alarm
- LED anchor light
- LED navigation lights
- LED docking lights
- Ritchie® compass
- Remote controlled spotlight
- Dual cylinder trim tabs
- Air horn
- Battery charger
- Batteries
- Freshwater tank - 75gal
- Stainless steel trim tabs with position indicator and auto retract (dual cylinder)
- LED courtesy lighting
- SeaBlaze Quattro LED Underwater Lights
- Generator
- 50' - 30 amp shore power (port and starboard)
- Fresh-water washdown spigot
- Raw-water washdown spigot

Seating

- Folding stern bench seat

- Helm seat with armrest
- Forward lounge seating with storage and cushions
- Folding second row of seating at helm
- Bow seating

Electronics

Garmin Premium Package:

- VHF 315
- Transceiver AIS 800
- Triple Displays GPSMAP® 8616xsv Chart plotter
- GT51M-TH Transducer, Chirp Transducers,
- Radar Fantom 54
- Auto Pilot GHP
- Reactor corepack for Yamaha Helm Master System
- Flir Night Vision

Upper Helm/Tower

Full Upper station:

- With Yamaha Helm Master system
- Sun-top
- (2) drink holders
- folding helm seat bolsters
- stainless steel grab rail
- glove box
- Garmin GHS 11 wired handset
- Garmin 8616 Additional screen
- GHC 20 Marine Auto pilot control

Exclusions

Owner's personal belongings.

Disclaimer

The Company offers the details of this vessel or yacht in good faith but cannot guarantee or warrant the accuracy of this information nor warrant the condition of the vessel. A buyer should instruct his representatives, agents, or his surveyors, to investigate such details as the buyer desires validated. This vessel or yacht is offered subject to prior sale, price change, or withdrawal

without notice.

PHOTOS

2



3



4



5



6



7



8



9



10



11



12



13



14



15



16



17



18



19



20



21



22



23



24



25



26



27



28



29



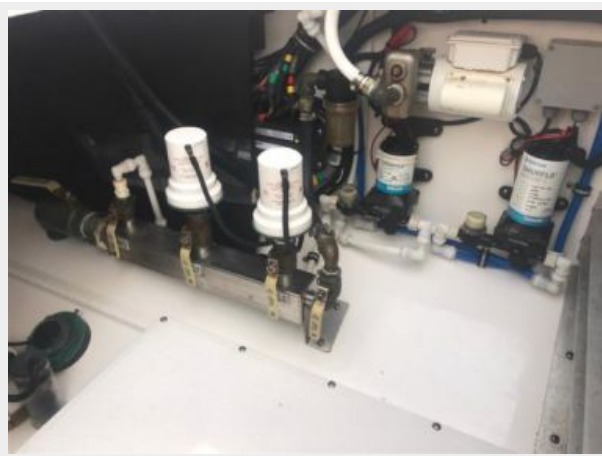
30



31



32



33



34



35



36



CONTACTS

Andrey Shestakov, leading yacht broker of the sales department of Shestakov Yacht Sales Inc. Shestakov Yacht Sales Inc., the official representative of the Miami/Fort Lauderdale FL headquarters.

Contact details

Email: andrey@shestakovyachtsales.com

Web: shestakovyachtsales.com/en/

Telephones

USA: +1(954)274-4435

Office hours

Monday – Saturday: **9:00 - 21:00** EDT

Sunday: **closed**

Address



Harbour Towne Marina, 850 NE 3rd St,
STE 213, Dania, FL 33004