

## CHINGONA — SEA RAY



**Builder:** [SEA RAY](#)

**Year Built:** 2018

**Model:** Cruising Yacht

**Price:** PRICE ON APPLICATION

**Location:** United States

**LOA:** 65' 1" (19.84m)

**Beam:** 17' 2" (5.23m)

**Min Draft:** 5' 1" (1.55m)

Our experienced yacht broker, Andrey Shestakov, will help you choose and buy a yacht that best suits your needs **CHINGONA — SEA RAY** from our catalogue. Presently, at Shestakov Yacht Sales Inc., we have a wide variety of yachts available on our sale's list. We also work in close contact with all the big yacht manufacturers from all over the world.

If you would like to buy a yacht **CHINGONA — SEA RAY** or would like help answering any questions concerning purchasing, selling or chartering a yacht, please call **+1(954)274-4435**

# TABLE OF CONTENTS

TABLE OF CONTENTS	2
SPECIFICATIONS	3
Overview	3
Basic Information	3
Dimensions	4
Speed, Capacities and Weight	4
Accommodations	4
Hull and Deck Information	4
Engine Information	5
DETAILED INFORMATION	6
Sea Ray Options	6
Exclusions	6
Disclaimer	6
PHOTOS	7
Chingona_Crew Quarters2	30
Chingona_Crew Quarters6	30
Chingona_Crew Quarters5	30
Chingona_Crew Quarters7	30
CONTACTS	33
Contact details	33
Telephones	33
Office hours	33
Address	33

---

# SPECIFICATIONS

---

## Overview

---

CHINGONA is a SUPER custom L-650 Sea Ray. The owners from North Texas worked for a year with the Sea Ray design team on the interior. The owners had a look in mind, and "Sea Ray knocked it past the outfield". This boat has every option that was available. If you are looking for a unique Sea Ray "L" class boat this is it.. CHINGONA has been here at our marina since commissioning February 2018. She is professionally maintained and serviced by MarineMax & Gulf Coast Yacht Management. The Sea Ray L650 Fly is intended to be the "best of the best" of what Sea Ray is capable of. She has premium upholstery, woodwork, and hardware that Sea Ray feels is all state-of-the-art that allows her to compete directly against top-tier boats in class. The Sea Ray L650 has premium upholstery, woodwork, and hardware that Sea Ray feels is all state-of-the-art and will allow her to compete directly against top-tier boats in class. Sea Ray hit the target at the top boats in class in terms of styling, quality, performance and market appeal. The L650 serves as a sterling representative of the Sea Ray L-Class ("L" for Luxury), a fresh series of premium yacht designs. The trend lately in virtually every large boat has been to put the galley up and aft. Sea Ray has gone with a more conventional forward location, but has opened up the galley, putting refrigerator and freezer drawers below the counters. By eliminating any galley bulkheads, Sea Ray has kept the whole inside of the main deck unobstructed and open -- just the way more people like it these days. It also lends the galley as a main part of the social zones in this open layout deck. The advantages of four staterooms are obvious for people with large families, or want to entertain multiple couples for an extended weekend. The L650 is the only boat in class that has created a standard day head in the boat's lazarette/Crew quarters. Set-Up for Owner/Operator, with both a bow and a stern thruster and the yacht controller joy stick, the L650 is super easy to dock the optional docking station aft with the joy stick makes backing in a slip or sideways to a dock super easy. The hydraulic swim platform has a 1,200 lb. capacity Not only can this be used for carrying and launching the ship's tender but it can also be used as a private beach wherever the boat happens to be anchored at the time. Both children and adults will love the "teak beach" features when the platform is partially submerged. Handling The L-650 has a superior level of performance and handling. It has a solid feel, but also a marked measure of "sprightly" responsiveness. It handles sea conditions well too, cutting through waves instead of launching over them. Sea Ray equips the L-650 with a pair of SeaKeeper gyro-stabilizers. With a very stable ride the SeaKeeper keeps it that way in all conditions

---

## Basic Information

---

**Category:** Cruising Yacht

**Sub Category:** Express

**Model Year:** 2018

**Year Built:** 2018

**Country:** United States

**Vessel Top:** Enclosed

---

## Dimensions

---

**LOA:** 65' 1" (19.84m)

**Beam:** 17' 2" (5.23m)

**Min Draft:** 5' 1" (1.55m)

---

## Speed, Capacities and Weight

---

**Displacement:** 73500 Pounds

**Gross Tonnage:** 60 Pounds

**Water Capacity:** 280 Gallons

**Holding Tank:** 100 Gallons

**Fuel Capacity:** 1030 Gallons

---

## Accommodations

---

**Total Cabins:** 4

**Total Berths:** 6

**Sleeps:** 8

**Total Heads:** 3

**Captain Cabin:** True

**Crew Cabin:** 1

**Crew Berths:** 2

**Crew Sleeps:** 2

**Crew Heads:** 1

---

## Hull and Deck Information

---

**Hull Material:** Fiberglass

**Deck Material:** Fiberglass

**Hull Configuration:** Deep Vee

**Hull Color:** White

**Hull Finish:** Aluminum

**Hull Designer:** Sea Ray Boats

**Interior Designer:** Mary Vera

---

## Engine Information

---

**Engines:** 3

**Manufacturer:** Caterpillar

**Model:** C18A

**Engine Type:** Inboard

**Fuel Type:** Diesel

---

# DETAILED INFORMATION

---

## Sea Ray Options

---

2018 SEA RAY 650DA SER Y1602F718 Y10 White Hull Black Canvas CAT C18A 1150 MHP Electric Door Helm/Pantograph Master State rm Refrigerator Master State rm - Safe Sea Ray China Place Settings w/Storage Salon Sofa w/ pullout bed Wine Cooler Rear Crew Quarters custom pkg Port Stateroom Bunk Conversion Transformer Shore Pwr ISO Boost KVH HD7 Antenna for True HD Programming Spare HD7 Dome Shell Air Conditioning/Heating Upgrade Audio System/Foredeck Seating Custom Sunshade for Bow Seating Table, Natural Teak No Wax - Bow Seating Table Cockpit- Natural Teak no wax w/cover Teak Flooring - Foredeck Seating Area Teak Flooring - Deck Cat Walks Teak Flooring - Cockpit Teak Flooring - Swim Platform SeaKeeper Gyroscopic Stabilizer and Gen upgrade Hydraulic - I/B Joystick Dock Sys - Bow & Stern Multi Station Docking Cock pt Controls Raymarine GS165 Upgrade - 2 Units Raymarine Network Cameras – Cock pt & Bilge Raymarine P7OR Autopilot Automatic Identification System FLEIR Thermal Imaging Camera Add'l Fuel Capacity to 1150 Gal total Stainless Steel Anchor 1,367.00 Oil Changer Sys - Engines, Trans & Gen

## Exclusions

---

Owner's personal belongings.

## Disclaimer

---

The Company offers the details of this vessel or yacht in good faith but cannot guarantee or warrant the accuracy of this information nor warrant the condition of the vessel. A buyer should instruct his representatives, agents, or his surveyors, to investigate such details as the buyer desires validated. This vessel or yacht is offered subject to prior sale, price change, or withdrawal without notice.

# PHOTOS













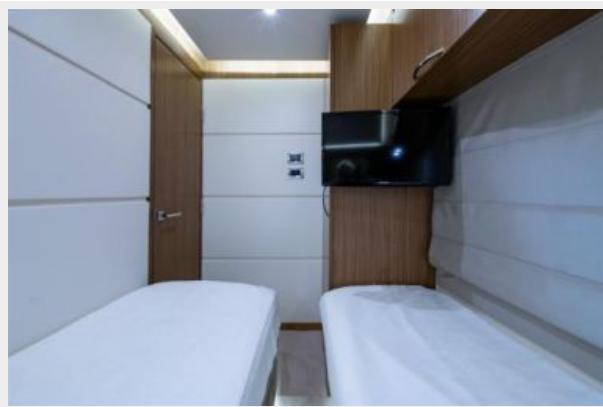








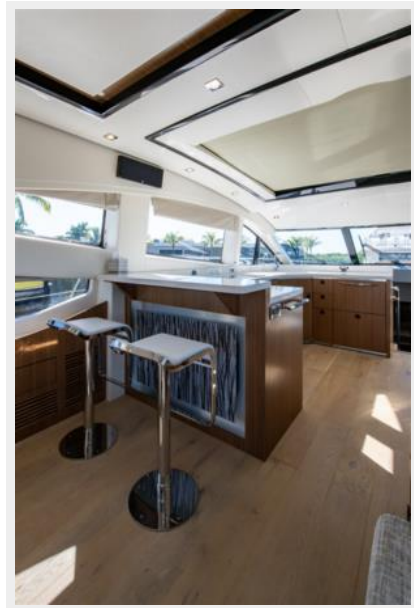


























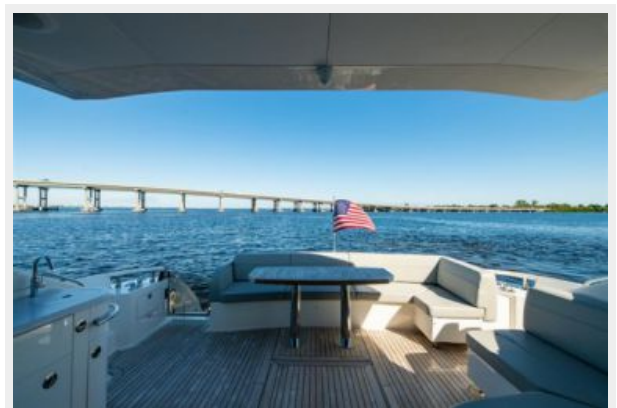


























Chingona\_Crew Quarters2



Chingona\_Crew Quarters6



Chingona\_Crew Quarters5



Chingona\_Crew Quarters7









# CONTACTS

---

Andrey Shestakov, leading yacht broker of the sales department of Shestakov Yacht Sales Inc. Shestakov Yacht Sales Inc., the official representative of the Miami/Fort Lauderdale FL headquarters.

## Contact details

---

Email: [andrey@shestakovyachtsales.com](mailto:andrey@shestakovyachtsales.com)

Web: [shestakovyachtsales.com/en/](http://shestakovyachtsales.com/en/)

## Telephones

---

USA: +1(954)274-4435

## Office hours

---

Monday – Saturday: **9:00 - 21:00** EDT

Sunday: **closed**

## Address

---



Harbour Towne Marina, 850 NE 3rd St,  
STE 213, Dania, FL 33004