

VERSAILLES — VAN DER VALK



Builder: VAN DER VALK

Year Built: 2014

Model: Cruising Yacht

Price: PRICE ON APPLICATION

Location: Montenegro

LOA: 80' 9" (24.60m)

Beam: 20' 7" (6.25m)

Min Draft: 4' 6" (1.35m)

Cruise Speed: 21.5 Kts. (25 MPH)

Max Speed: 26.7 Kts. (31 MPH)

Our experienced yacht broker, Andrey Shestakov, will help you choose and buy a yacht that best suits your needs Versailles — VAN DER VALK from our catalogue. Presently, at Shestakov Yacht Sales Inc., we have a wide variety of yachts available on our sale's list. We also work in close contact with all the big yacht manufacturers from all over the world.

If you would like to buy a yacht Versailles — VAN DER VALK or would like help answering any questions concerning purchasing, selling or chartering a yacht, please call +1(954)274-4435

TABLE OF CONTENTS

TABLE OF CONTENTS	2
SPECIFICATIONS	4
Basic Information	4
Dimensions	4
Speed, Capacities and Weight	4
Accommodations	4
Hull and Deck Information	5
Engine Information	5
PHOTOS	6
3-exterior	6
4-exterior	6
6-Flybridge	6
5-exterior	6
7-Flybridge	6
8-Flybridge helm post	6
9-Main deck entrance	7
10-Main deck cockpit	7
11-Main deck cockpit	7
25-Lower Salon	7
12-Helm post	7
24-Ladder downstairs	7
14-Master cabin	8
15-Master cabin	8
16-Master cabin	8
17-Master cabin head	8
18- VIP cabin №1	8
19-VIP cabin №1	8
20-VIP cabin №1 head	9

21-VIP cabin №2	9
22-VIP cabin №2 head	9
23-Hall	9
27-Lower Salon	9
31-Engine room	9
28-Crew cabin	10
30-Crew head	10
CONTACTS	11
Contact details	11
Telephones	11
Office hours	11
Address	11

SPECIFICATIONS

Basic Information

Category: Cruising Yacht

Model Year: 2014

Year Built: 2014

Country: Montenegro

Vessel Top: Hardtop

Fly Bridge: Yes

Cockpit: Yes

Dimensions

LOA: 80' 9" (24.60m)

LWL: 61' 5" (18.70m)

Beam: 20' 7" (6.25m)

Min Draft: 4' 6" (1.35m)

Speed, Capacities and Weight

Cruise Speed: 21.5 Kts. (25 MPH)

Max Speed: 26.7 Kts. (31 MPH)

Displacement: 143300.4703 Pounds

Water Capacity: 422.6752832 Gallons

Holding Tank: 211.3376416 Gallons

Fuel Capacity: 3302.15065 Gallons

Accommodations

Total Cabins: 4

Total Berths: 4

Sleeps: 7

Total Heads: 4

Crew Cabin: 1

Crew Berths: 2

Crew Sleeps: 2

Crew Heads: 1

Hull and Deck Information

Hull Material: Aluminum

Deck Material: Teak

Hull Configuration: Semi-Displacement

Hull Color: Bronze / Champagne colour

Hull Designer: Wim van der Valk
Continental Yachts

Exterior Designer: Wim van der Valk
Continental Yachts

Interior Designer: Wim van der Valk
Continental Yachts

Engine Information

Engines: 3

Manufacturer: Volvo Penta

Model: D13-800 hp 13l 6 cil.

Engine Type: Inboard

Fuel Type: Diesel

PHOTOS

4-exterior



3-exterior



5-exterior



6-Flybridge



7-Flybridge



8-Flybridge helm post



9-Main deck entrance



10-Main deck cockpit



11-Main deck cockpit



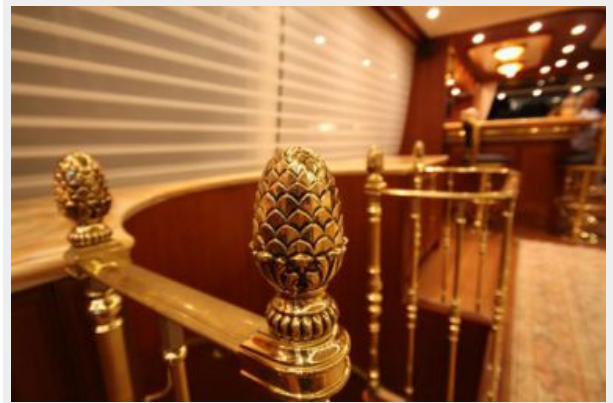
25-Lower Salon



12-Helm post



24-Ledder downstairs



14-Master cabin



15-Master cabin



16-Master cabin



17-Master cabin head



18- VIP cabin №1



19-VIP cabin №1



20-VIP cabin №1 head



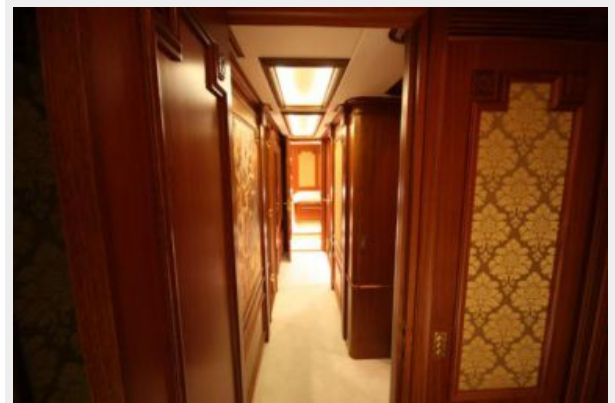
21-VIP cabin №2



22-VIP cabin №2 head



23-Hall



27-Lower Salon



31-Engine room



28-Crew cabin



30-Crew head



CONTACTS

Andrey Shestakov, leading yacht broker of the sales department of Shestakov Yacht Sales Inc. Shestakov Yacht Sales Inc., the official representative of the Miami/Fort Lauderdale FL headquarters.

Contact details

Email: andrey@shestakovyachtsales.com

Web: shestakovyachtsales.com/en/

Telephones

USA: +1(954)274-4435

Office hours

Monday – Saturday: **9:00 - 21:00** EDT

Sunday: **closed**

Address



Harbour Towne Marina, 850 NE 3rd St,
STE 213, Dania, FL 33004