

FOREIGN EXCHANGE III — BAYLINER



Builder: BAYLINER

Year Built: 1997

Model: Motor Yacht

Price: PRICE ON APPLICATION

Location: United States

LOA: 47' 0" (14.33m)

Beam: 14' 11" (4.55m)

Max Draft: 3' 4" (1.02m)

Cruise Speed: 8 Kts. (9 MPH)

Max Speed: 17 Kts. (20 MPH)

Our experienced yacht broker, Andrey Shestakov, will help you choose and buy a yacht that best suits your needs **Foreign Exchange III — BAYLINER** from our catalogue. Presently, at Shestakov Yacht Sales Inc., we have a wide variety of yachts available on our sale's list. We also work in close contact with all the big yacht manufacturers from all over the world.

If you would like to buy a yacht **Foreign Exchange III — BAYLINER** or would like help answering any questions concerning purchasing, selling or chartering a yacht, please call **+1(954)274-4435**

TABLE OF CONTENTS

TABLE OF CONTENTS	2
SPECIFICATIONS	8
Overview	8
Basic Information	8
Dimensions	8
Speed, Capacities and Weight	8
Accommodations	9
Hull and Deck Information	9
Engine Information	9
DETAILED INFORMATION	10
MAIN DESCRIPTION	10
1997 47' BAYLINER VESSEL WALKTHROUGH	10
1997 47' BAYLINER ACCOMMODATIONS	10
1997 47' BAYLINER COCKPIT	10
1997 47' BAYLINER SALON	11
1998 47' BAYLINER GALLEY	11
1997 47' BAYLINER DINING	11
1997 47' BAYLINER MASTER STATEROOM	11
1997 47' BAYLINER GUEST STATEROOM	12
1997 47' BAYLINER MASTER HEAD	12
1997 47' BAYLINER VIP GUEST STATEROOM	12
1997 47' BAYLINER GUEST/DAY HEAD	12
1997 47' BAYLINER LAUNDRY/CENTRAL VACUUM	12
1997 47' BAYLINER PILOTHOUSE	13
1997 47' BAYLINER FLYBRIDGE	13
1997 47' BAYLINER ENTERTAINMENT EQUIPMENT	13
1997 47' BAYLINER ELECTRONICS	13
1997 47' BAYLINER ELECTRICAL SYSTEM	13

1997 47' BAYLINER ENGINE/MECHANICAL SYSTEM	14
1997 47' BAYLINER DECK EQUIPMENT	14
1997 47' BAYLINER TENDER	14
1997 47' BAYLINER EXCLUSIONS	14
1997 47' BAYLINER DISCLAIMER	14
Exclusions	14
Disclaimer	15
PHOTOS	16
102 Stbd Qtr	16
118 Bridge Seating Port	16
115 Bridge-Cockpit Ladder	16
303 Bridge 12v Panel	16
218 Pilothouse Door Port	17
306 Bridge TriData	17
325 Washer Dryer Combo	17
229 Guest Vanity	17
232 Guest Shower	18
121 Bridge 12v Panel	18
243 Master Closet	18
236 Master Berth	18
240 Master Port	19
350 Galley Trash Compactor	19
242 Master Closet	19
124 Bridge Bar_LI	19
244 Master Cabinet	20
245 Master Closet	20
247 Master Head	20
106 Pulpit Looking Aft	20
249 Master Shower	21

302 Bridge Helm Stbd Instruments	21
301 Bridge Helm Port Instruments	21
209 Entertainment	21
207 Galley Counter Aft	22
208 Galley Sink	22
314 PH Chartplotter	22
308 Bridge VHF	22
309 Bridge Frig	23
316 PH Radio ICOM	23
311 EPIRB	23
313 PH Compt Control	23
318 PH TriData	24
215 Helm	24
333 Engine Glendinning	24
119 Bridge Seating Port	24
335 ER Fire Ext	25
336 FW Pump & Accumulator	25
337 Pro Mariner 60A Charger	25
349 Galley Range	25
246 Master Cabinet	26
351 Galley Microwave	26
207a Galley Fwd	26
305 Bridge Chartplotter	26
304 Bridge Autphelm	27
131 Tender	27
307 Bridge Stereo	27
132 Tender Stored	27
310 Bridge Compass	27
214 Helm Seating Aft	27

321 PH Compass	28
323 PH Speaker Selector	28
324 Central Vacuum	28
319 PH Autohelm	28
326 Holding Tank Vacuum Generator	28
327 Engine Port	28
331 Engine Stbd (2)	29
226 Guest Stateroom	29
332 Battery Isolator	29
334 Engine Air Sep	29
338 ProSine Inverter	29
339 Foredeck Anchor Windlass	29
201 Salon Port Fwd	30
231 Guest Shower	30
343 Typ AC Control	30
104 Port Qtr	30
346 Salon Wet Bar	31
347 Galley Frig	31
233 Companionway	31
241 Master Stbd	31
000 HR	32
205 Salon Stbd Aft	32
250 Master Head	32
206 Salon Port Aft	32
125 Bridge VHF & Stereo Cabinet	33
253 Master Vanity	33
251 Master Bath	33
216 Helm Seating Port	33
108 Bow Seat	34

223 Guest Stateroom	34
257 3rd Stateroom Bunks	34
117 Captains Chair	34
330 Engine Stbd	34
126 Pulpit	34
211 Step to Pilothouse	35
105 Port Bow	35
134 Tender Helm	35
116 Bridge Helm	35
113 Cockpit Stbd	36
220 Electrical Distribution Panel	36
221 Bridge Access	36
228 Guest Head	36
112 Cockpit Port	37
329 Engine Room	37
225 Guest Cabinet	37
344 Salon Stereo	37
210 Bar	38
345 Typ Speaker	38
133 Tender Seats	38
317 PH VHF Radio SH	38
315 PH Radar Display	39
320 PH Battery Monitor	39
224 Guest Night Table	39
103 Stern	39
322 PH Stereo	40
204 Salon Stbd Fwd	40
254 3rd Stateroom Bunks	40
135 Tender Motor	40

328 Engine Port	40
CONTACTS	41
Contact details	41
Telephones	41
Office hours	41
Address	41

SPECIFICATIONS

Overview

Foreign Exchange is a 1997 Bayliner 4788 raised pilothouse motor yacht, in turn-key condition. With a three stateroom and two head layout, the Bayliner 4788 is very popular for the Great Loop, coastal cruising, a weekend getaway, or full-time living aboard. There are owners who blog about their Bayliner 4788 adventures, so there is a lot of information available regarding dependability, reliability and livability of this model. Her current owners purchased Foreign Exchange in 2014, and brought her from Canada to brackish water in Jacksonville, FL. Her condition was what sold them on this particular Bayliner 4788, and they have maintained that condition. They found their next boat, so Foreign Exchange is ready for her next owners.

Basic Information

Category: Motor Yacht

Model Year: 1997

Year Built: 1997

Country: United States

Dimensions

LOA: 47' 0" (14.33m)

Beam: 14' 11" (4.55m)

Max Draft: 3' 4" (1.02m)

Clearance: 18' 2" (5.54m)

Speed, Capacities and Weight

Cruise Speed: 8 Kts. (9 MPH)

Max Speed: 17 Kts. (20 MPH)

Displacement: 30000 Pounds

Water Capacity: 200 Gallons

Holding Tank: 48 Gallons

Fuel Capacity: 444 Gallons

Accommodations

Total Cabins: 3

Total Berths: 4

Total Heads: 2

Hull and Deck Information

Hull Material: Fiberglass

Engine Information

Engines: 2

Manufacturer: Cummins

Model: Cummins 6BTA5.9-M2

Engine Type: Inboard

Fuel Type: Diesel

DETAILED INFORMATION

MAIN DESCRIPTION

Foreign Exchange is a 1997 Bayliner 4788 raised pilothouse motor yacht, in turn-key condition. With a three stateroom and two head layout, the Bayliner 4788 is very popular for the Great Loop, coastal cruising, a weekend getaway, or full-time living aboard. There are owners who blog about their Bayliner 4788 adventures, so there is a lot of information available regarding dependability, reliability and livability of this model. Her current owners purchased Foreign Exchange in 2014, and brought her from Canada to brackish water in Jacksonville, FL. Her condition was what sold them on this particular Bayliner 4788, and they have maintained that condition. They found their next boat, so Foreign Exchange is ready for her next owners.

1997 47' BAYLINER VESSEL WALKTHROUGH

Entering the Bayliner 4788 from the fiberglass swim platform, you step into the carpeted cockpit through a starboard transom door. From the cockpit, you can step up to the port or starboard side deck, climb a ladder to the flybridge or walk into the salon via the sliding glass door. Once inside the salon, you will find a chair and side table to port, the galley port forward, L-shaped seating with a high/low folding table starboard aft and entertainment center/wet bar starboard forward. The carpeted centerline companionway, accessed via 4 steps down, leads to the master and guest staterooms, and the 2 heads. Four carpeted stairs starboard lead up from the salon to the raised pilothouse. The carpeted Bayliner 4788 pilothouse features both port and starboard side deck access doors, wood steps with non-skid coverings up to the flybridge with an easy opening Plexiglass door, a centerline Captain's chair at the helm, and an L-shaped seating area with a folding table to port. The engine room is accessed via salon sole hatches or through a removable companionway step.

1997 47' BAYLINER ACCOMMODATIONS

Foreign Exchange offers a master stateroom forward with an island queen size berth and ensuite head, a guest stateroom to port, just aft of the master stateroom, with over/under bunks and a removable partition and door. The third stateroom is a VIP guest stateroom port aft of the master with a queen size berth. The guest head with enclosed shower is starboard across from the VIP guest stateroom.

1997 47' BAYLINER COCKPIT

The roomy cockpit of Foreign Exchange features: a hardtop, transom door to the fiberglass swim platform, snap-in cockpit carpet in three separate bound pieces for ease of removal, molded steps to both side decks, sliding glass door to the salon with a snap-on Navy blue canvas cover,

3 hatches for access to the lazarette, a non-skid deck, a mountable Force 10 gas grill with mounting hardware and propane tank, a mounted brush/rod holder, storage cabinets, and a stainless steel ladder to the flybridge.

1997 47' BAYLINER SALON

The large, bright salon of Foreign Exchange has a neutral colored L-shaped settee with storage under the cushions, and a high/low wood folding table starboard aft, entertainment center/wet bar with a Nutone blender built into the Corian counter and U-Line ice maker starboard forward, a chair, floor lamp and end table to port, neutral carpeted sole, engine room access via hatches in the sole, large opening side windows with coordinating valances, screens and blinds, and a Toshiba television hidden in a cabinet. The single floor layout makes the salon large and inviting, and lets the cook stay part of the conversation while entertaining. The salon has good headroom which adds to the overall large salon.

1998 47' BAYLINER GALLEY

The large galley of Foreign Exchange is situated port forward in the salon, and is equipped with: a Norcold refrigerator/freezer (New in 2017), a Whirlpool microwave oven, a Frigidaire trash compactor, a Princess 3-burner electric cooktop with a wood cutting board surface and oven, double stainless steel sinks, a pull-out Price Pfister spray faucet, neutral Corian countertops, numerous storage cabinets and drawers, and a wood sole.

1997 47' BAYLINER DINING

Interior dining space on Foreign Exchange is at the high/low folding table in the salon.

1997 47' BAYLINER MASTER STATEROOM

The master stateroom on Foreign Exchange is forward 2 steps up from the companionway and features: an island queen size berth, 4 curtained portlights, 2 overhead hatches with built-in sliding covers, 2 reading lights, a lighted hanging locker to port with a drawer beneath, a cabinet to port with 2 shelves, a stereo control to port, 6 under bed storage drawers, a padded headboard, a mirror behind the bed, a cabinet to starboard with 2 shelves, a lighted locker to starboard with 3 shelves and a drawer beneath as well as a shoe cubby with a fold-down door, a control for AC/heat, numerous ceiling lights, a carpeted sole. Access to the ensuite head is to starboard with a latching swinging door. Foreign Exchange is currently configured with the third stateroom open to the master stateroom. This configuration makes the following amenities part of the master stateroom: floor to ceiling double mirrored doors with lighted lockers, one side with 5 drawers and the other side with a wall safe and built-in shelves.

1997 47' BAYLINER GUEST STATEROOM

The guest stateroom is right off the master offering over/under bunks, a carpeted sole, a closable vent, 3 ceiling lights, and 2 curtained portlights. A unique door partition configuration allows the bunks to be separate from the master stateroom, or part of the master stateroom. The upper bunk is a Pullman. The partition and door have never been installed but are included, and still wrapped from the factory.

1997 47' BAYLINER MASTER HEAD

The master head on Foreign Exchange is accessible up one step, with a swinging mirrored door. It features fiberglass sole and lower walls, a glass shower door, a stand-up shower/bath tub with a removable shower head, a molded counter and sink with a single lever faucet, a cabinet door under the sink with 2 storage shelves, a mirrored wall behind the sink with a swinging door and 3 shelves, a portlight with opening blinds, a Vacuflush head, an exhaust fan, 2 ceiling vanity lights, a ceiling shower light, 2 additional ceiling lights, 2 wall hooks, 5 towel bars, and a portlight in the shower/bath tub with a privacy cover.

1997 47' BAYLINER VIP GUEST STATEROOM

The VIP guest stateroom offers a queen size berth, a sliding pocket door to the companionway, 2 reading lights, 5 overhead lights, 2 curtained portlights, a hanging locker, a cork bulletin board, 2 under bed storage drawers, a nightstand with a drawer and cabinet, a padded headboard in front of a mirrored wall, 2 stereo speakers, a closable AC/heat vent, wall hooks, and carpeted sole.

1997 47' BAYLINER GUEST/DAY HEAD

The guest/day head on Foreign Exchange is starboard across from the VIP guest stateroom, up one step, with a swinging mirrored door. It features fiberglass sole and lower walls, a bi-fold shower door, a stand-up shower with a removable shower head, a molded counter and sink with a single lever faucet, 2 cabinet doors under the sink with 2 storage shelves, a mirrored wall behind the sink with 2 sliding doors and a portlight and unique bottle storage rack installed by a previous owner, 2 swinging mirrored cabinet doors with 2 storage shelves, a Vacuflush head, an exhaust fan, 4 ceiling vanity lights, a wall hook and 2 towel bars.

1997 47' BAYLINER LAUNDRY/CENTRAL VACUUM

The Ariston combination washer/dryer (New 2016) is in the companionway to port, across from the built-in central vacuum which is accessible behind the smoked sliding glass door.

1997 47' BAYLINER PILOTHOUSE

The carpeted air conditioned raised pilothouse offers a full helm forward with burled wood accents, a Navy blue leather movable helm seat with folding arms, deck access doors both port and starboard, an L-shaped bench seat with storage aft to port, an overhead storage cabinet, a wood folding table, a storage drawer, electrical panel with smoked glass doors and a fold-up glass and Formica top, steps to the flybridge, and steps starboard aft to the salon. Foreign Exchange has a removable cushion and footboard in front of the port deck access door which gives additional seating when in place. The wrap around windows let in plenty of light and provide unimpeded viewing while underway. The side windows have Navy blue canvas covers which snap-on in the interior of the pilothouse. The windshield, with 3 electric wipers has a Navy blue cover which snaps-on on the exterior of the pilothouse.

1997 47' BAYLINER FLYBRIDGE

The flybridge is perfect for open air cruising and entertaining. There is plenty of room for guests. Foreign Exchange features a Navy blue canvas bimini top attached to the radar arch, non-skid deck, an opening to the ladder to the cockpit, a hatch and internal stairs to the pilothouse, full helm forward with Navy blue canvas cover, Jabsco searchlight, single helm seat, wrap-around seating with storage and removable cushion port aft, bench seat with storage and removable cushion to starboard, and tender storage. A tender can be lifted with the tender crane. The wet bar to aft starboard features a Norcold Model NR751BB refrigerator (New 2018), sink, and storage.

1997 47' BAYLINER ENTERTAINMENT EQUIPMENT

Shakespeare TV antenna (2016) Toshiba TV in the salon cabinet Yamaha DVD Player DVD-E810 Yamaha Stereo RX-E810 Sima Stereo Speaker Selector SSW-L4EX Energy Speakers

1997 47' BAYLINER ELECTRONICS

Pilothouse computer with MapTech software (New 2018) Pilothouse Raytheon R21XX Rastar Scan Radar Pilothouse Standard Horizon Matrix GX300S VHF Pilothouse Raytheon Raydata tridata Pilothouse Danforth magnetic compass Pilothouse ICOM IC-M802 VHF Pilothouse Standard Horizon GPS Chart CP390i Pilothouse Autohelm ST7000 Auto Pilot Glendinning Engine Synchronizer Flybridge Standard Horizon GPS Chart CP390i Flybridge Danforth Magnetic Compass Flybridge Autohelm ST6000 Auto Pilot Flybridge Raytheon 48? Open Array Radar Flybridge Raytheon Raydata Tridata Flybridge Raytheon Ray210 VHF Flybridge JVC Stereo KS-R127

1997 47' BAYLINER ELECTRICAL SYSTEM

Westerbeke BTDG 12.5 kw generator with 1335 hours
Prosine 2.0 2000 watt inverter/charger with remote panel
Pro Mariner 60 amp battery charger
50 Amp power cord with Glendenning retrieval
2 X 30 Amp Shore Cords
3 8D House batteries (New 2019)
Generator battery (New 2019)

1997 47' BAYLINER ENGINE/MECHANICAL SYSTEM

Twin Cummins 6BTA5.9-M2 330 hp main engines with approximately 2900 hours
ZF gearboxes
Hynautics hydraulic steering system
Racor R90P fuel filter
Racor fuel filter for the generator
Fuel manifold
Bennett trim tabs
Marine Air Systems reverse cycle air conditioning/heating system
Seaward 18 gallon water heater
Tankwatch holding tank level monitor system
New black water system hoses in 2016
Vacuflush system vacuum generators rebuilt 2017
Village Marine Water Maker NF450 18.7gph

1997 47' BAYLINER DECK EQUIPMENT

H1100 Muir Cougar anchor windlass with foot controls
250' 3/8" anchor chain
Bruce anchor
Stainless steel rails with lifeline
Stainless steel deck hardware with lifeline
Folding rail mounted fender rack
Pulpit
Wash-down forward and aft
Non-skid deck
Foredeck seating with removable cushion
Foredeck lockers
Fiberglass swim platform
Stainless steel swim ladder
Fresh water hot/cold shower aft
Bottom painted November 2017 - Cleaned by a diver regularly

1997 47' BAYLINER TENDER

Brig 11'10" RIB
Mercury 25 hp 2-stroke outboard
Flybridge tender crane (US Marine)

1997 47' BAYLINER EXCLUSIONS

Sellers' personal belongings
Staging materials provided by broker, including cockpit chairs

1997 47' BAYLINER DISCLAIMER

The Company offers the details of this vessel in good faith but cannot guarantee or warrant the accuracy of this information nor warrant the condition of the vessel. A buyer should instruct his agents, or his surveyors, to investigate such details as the buyer desires validated. This vessel is offered subject to prior sale, price change, or withdrawal without notice.

Exclusions

Owner's personal belongings.

Disclaimer

The Company offers the details of this vessel or yacht in good faith but cannot guarantee or warrant the accuracy of this information nor warrant the condition of the vessel. A buyer should instruct his representatives, agents, or his surveyors, to investigate such details as the buyer desires validated. This vessel or yacht is offered subject to prior sale, price change, or withdrawal without notice.

PHOTOS

102 Stbd Qtr



118 Bridge Seating Port



115 Bridge-Cockpit Ladder



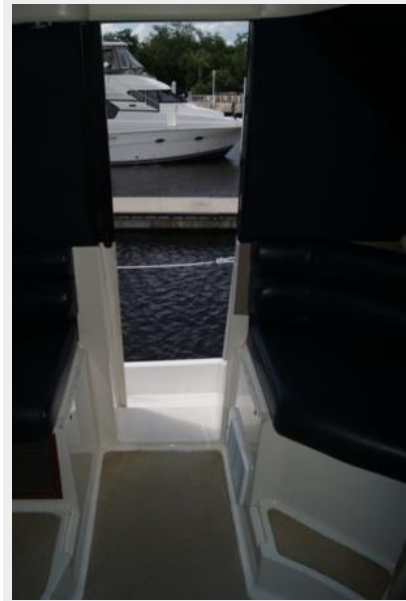
303 Bridge 12v Panel



306 Bridge TriData



218 Pilothouse Door Port



325 Washer Dryer Combo



229 Guest Vanity



232 Guest Shower



121 Bridge 12v Panel



243 Master Closet



236 Master Berth



240 Master Port



350 Galley Trash Compactor



242 Master Closet



124 Bridge Bar_LI



244 Master Cabinet



245 Master Closet



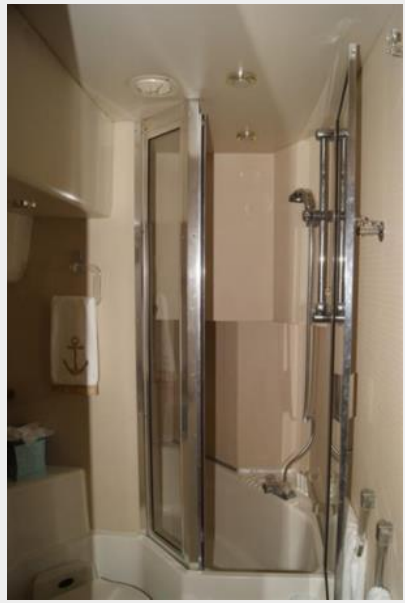
247 Master Head



106 Pulpit Looking Aft



249 Master Shower



302 Bridge Helm Stbd Instruments



301 Bridge Helm Port Instruments



209 Entertainment



208 Galley Sink



207 Galley Counter Aft



308 Bridge VHF



314 PH Chartplotter



309 Bridge Frig



316 PH Radio ICOM



311 EPIRB



313 PH Compt Control



215 Helm



318 PH TriData



119 Bridge Seating Port



333 Engine Glendinning



335 ER Fire Ext



336 FW Pump & Accumulator



337 Pro Mariner 60A Charger



349 Galley Range



351 Galley Microwave



246 Master Cabinet



207a Galley Fwd



305 Bridge Chartplotter



304 Bridge Authelm



131 Tender



307 Bridge Stereo



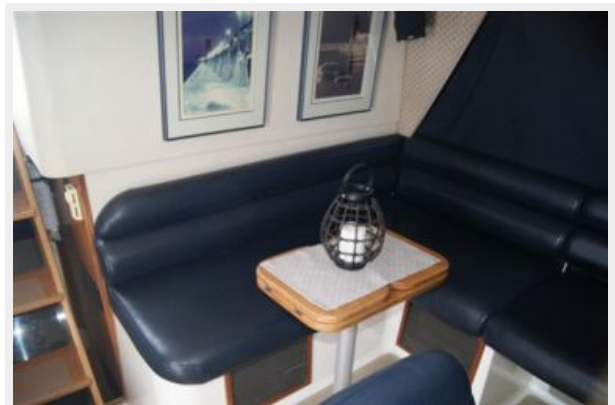
132 Tender Stored



310 Bridge Compass



214 Helm Seating Aft



321 PH Compass



323 PH Speaker Selector



319 PH Autohelm



324 Central Vacuum



326 Holding Tank Vacuum Generator



327 Engine Port



331 Engine Stbd (2)



226 Guest Stateroom



332 Battery Isolator



334 Engine Air Sep



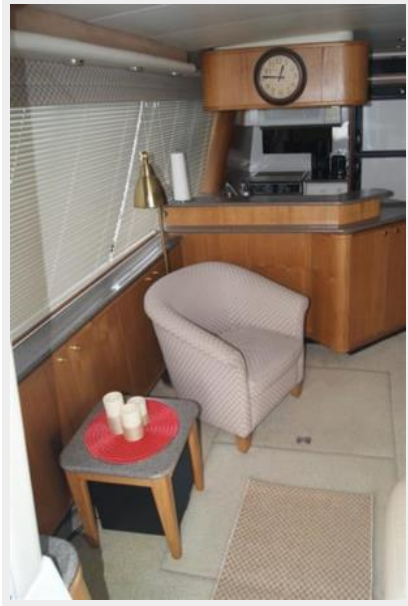
338 ProSine Inverter



339 Foredeck Anchor Windlass



201 Salon Port Fwd



231 Guest Shower



343 Typ AC Control



104 Port Qtr



346 Salon Wet Bar



347 Galley Frig



233 Companionway



241 Master Stbd



000 HR



205 Salon Stbd Aft



250 Master Head



206 Salon Port Aft



125 Bridge VHF & Stereo Cabinet



253 Master Vanity



251 Master Bath



216 Helm Seating Port



108 Bow Seat



223 Guest Stateroom



257 3rd Stateroom Bunks



117 Captains Chair



330 Engine Stbd



126 Pulpit



105 Port Bow



211 Step to Pilothouse



116 Bridge Helm



134 Tender Helm



113 Cockpit Stbd



220 Electrical Distribution Panel



221 Bridge Access



228 Guest Head



329 Engine Room



112 Cockpit Port



225 Guest Cabinet



344 Salon Stereo



345 Typ Speaker



210 Bar



317 PH VHF Radio SH



133 Tender Seats



320 PH Battery Monitor



315 PH Radar Display



224 Guest Night Table



103 Stern



322 PH Stereo



204 Salon Stbd Fwd



254 3rd Stateroom Bunks



135 Tender Motor



328 Engine Port



CONTACTS

Andrey Shestakov, leading yacht broker of the sales department of Shestakov Yacht Sales Inc. Shestakov Yacht Sales Inc., the official representative of the Miami/Fort Lauderdale FL headquarters.

Contact details

Email: andrey@shestakovyachtsales.com

Web: shestakovyachtsales.com/en/

Telephones

USA: +1(954)274-4435

Office hours

Monday – Saturday: **9:00 - 21:00** EDT

Sunday: **closed**

Address



Harbour Towne Marina, 850 NE 3rd St,
STE 213, Dania, FL 33004