

FOREIGN EXCHANGE III — BAYLINER



Судостроитель: BAYLINER

Год постройки: 1997

Модель: Моторная яхта

Цена: **ЦЕНА ЯХТЫ ПО ЗАПРОСУ**

Местонахождение: United States

Длина общая: 47' 0" (14.33m)

Ширина: 14' 11" (4.55m)

Макс. осадка: 3' 4" (1.02m)

Крейс. скорость: 8 Kts. (9 MPH)

Макс. скорость: 17 Kts. (20 MPH)

Купить **Foreign Exchange III — BAYLINER** а также выбрать подходящую вам яхту из нашего каталога яхт вам поможет опытный яхтенный брокер Андрей Шестаков. На сегодняшний день компания **Shestakov Yacht Sales Inc.** имеет большое количество яхт в собственном списке продаж, а также тесно сотрудничает со всеми крупными яхтенными производителями по всему миру.

Для того чтобы купить яхту **Foreign Exchange III — BAYLINER** а также проконсультироваться по любому вопросу связанному с покупкой, продажей, чартером яхт позвоните по телефону **+7(918)465-66-44**.

ОГЛАВЛЕНИЕ

| | |
|---|----|
| ОГЛАВЛЕНИЕ | 2 |
| ХАРАКТЕРИСТИКИ | 8 |
| Обзор | 8 |
| Основная информация | 8 |
| Размеры | 8 |
| Скорость, вместимость и масса | 8 |
| Размещение | 9 |
| Корпус и палуба | 9 |
| Информация о двигателе | 9 |
| ПОДРОБНОЕ ОПИСАНИЕ | 10 |
| MAIN DESCRIPTION | 10 |
| 1997 47' BAYLINER VESSEL WALKTHROUGH | 10 |
| 1997 47' BAYLINER ACCOMMODATIONS | 10 |
| 1997 47' BAYLINER COCKPIT | 10 |
| 1997 47' BAYLINER SALON | 11 |
| 1998 47' BAYLINER GALLEY | 11 |
| 1997 47' BAYLINER DINING | 11 |
| 1997 47' BAYLINER MASTER STATEROOM | 11 |
| 1997 47' BAYLINER GUEST STATEROOM | 12 |
| 1997 47' BAYLINER MASTER HEAD | 12 |
| 1997 47' BAYLINER VIP GUEST STATEROOM | 12 |
| 1997 47' BAYLINER GUEST/DAY HEAD | 12 |
| 1997 47' BAYLINER LAUNDRY/CENTRAL VACUUM | 12 |
| 1997 47' BAYLINER PILOTHOUSE | 13 |
| 1997 47' BAYLINER FLYBRIDGE | 13 |
| 1997 47' BAYLINER ENTERTAINMENT EQUIPMENT | 13 |
| 1997 47' BAYLINER ELECTRONICS | 13 |
| 1997 47' BAYLINER ELECTRICAL SYSTEM | 13 |

| | |
|--|-----------|
| 1997 47' BAYLINER ENGINE/MECHANICAL SYSTEM | 14 |
| 1997 47' BAYLINER DECK EQUIPMENT | 14 |
| 1997 47' BAYLINER TENDER | 14 |
| 1997 47' BAYLINER EXCLUSIONS | 14 |
| 1997 47' BAYLINER DISCLAIMER | 14 |
| Исключения | 14 |
| Отказ от ответственности | 15 |
| ФОТОГРАФИИ | 16 |
| 102 Stbd Qtr | 16 |
| 118 Bridge Seating Port | 16 |
| 115 Bridge-Cockpit Ladder | 16 |
| 303 Bridge 12v Panel | 16 |
| 218 Pilothouse Door Port | 17 |
| 306 Bridge TriData | 17 |
| 325 Washer Dryer Combo | 17 |
| 229 Guest Vanity | 17 |
| 232 Guest Shower | 18 |
| 121 Bridge 12v Panel | 18 |
| 243 Master Closet | 18 |
| 236 Master Berth | 18 |
| 240 Master Port | 19 |
| 350 Galley Trash Compactor | 19 |
| 242 Master Closet | 19 |
| 124 Bridge Bar_LI | 19 |
| 244 Master Cabinet | 20 |
| 245 Master Closet | 20 |
| 247 Master Head | 20 |
| 106 Pulpit Looking Aft | 20 |
| 249 Master Shower | 21 |

| | |
|----------------------------------|----|
| 302 Bridge Helm Stbd Instruments | 21 |
| 301 Bridge Helm Port Instruments | 21 |
| 209 Entertainment | 21 |
| 207 Galley Counter Aft | 22 |
| 208 Galley Sink | 22 |
| 314 PH Chartplotter | 22 |
| 308 Bridge VHF | 22 |
| 309 Bridge Frig | 23 |
| 316 PH Radio ICOM | 23 |
| 311 EPIRB | 23 |
| 313 PH Compt Control | 23 |
| 318 PH TriData | 24 |
| 215 Helm | 24 |
| 333 Engine Glendinning | 24 |
| 119 Bridge Seating Port | 24 |
| 335 ER Fire Ext | 25 |
| 336 FW Pump & Accumulator | 25 |
| 337 Pro Mariner 60A Charger | 25 |
| 349 Galley Range | 25 |
| 246 Master Cabinet | 26 |
| 351 Galley Microwave | 26 |
| 207a Galley Fwd | 26 |
| 305 Bridge Chartplotter | 26 |
| 304 Bridge Autphelm | 27 |
| 131 Tender | 27 |
| 307 Bridge Stereo | 27 |
| 132 Tender Stored | 27 |
| 310 Bridge Compass | 27 |
| 214 Helm Seating Aft | 27 |

| | |
|-----------------------------------|----|
| 321 PH Compass | 28 |
| 323 PH Speaker Selector | 28 |
| 324 Central Vacuum | 28 |
| 319 PH Autohelm | 28 |
| 326 Holding Tank Vacuum Generator | 28 |
| 327 Engine Port | 28 |
| 331 Engine Stbd (2) | 29 |
| 226 Guest Stateroom | 29 |
| 332 Battery Isolator | 29 |
| 334 Engine Air Sep | 29 |
| 338 ProSine Inverter | 29 |
| 339 Foredeck Anchor Windlass | 29 |
| 201 Salon Port Fwd | 30 |
| 231 Guest Shower | 30 |
| 343 Typ AC Control | 30 |
| 104 Port Qtr | 30 |
| 346 Salon Wet Bar | 31 |
| 347 Galley Frig | 31 |
| 233 Companionway | 31 |
| 241 Master Stbd | 31 |
| 000 HR | 32 |
| 205 Salon Stbd Aft | 32 |
| 250 Master Head | 32 |
| 206 Salon Port Aft | 32 |
| 125 Bridge VHF & Stereo Cabinet | 33 |
| 253 Master Vanity | 33 |
| 251 Master Bath | 33 |
| 216 Helm Seating Port | 33 |
| 108 Bow Seat | 34 |

| | |
|-----------------------------------|----|
| 223 Guest Stateroom | 34 |
| 257 3rd Stateroom Bunks | 34 |
| 117 Captains Chair | 34 |
| 330 Engine Stbd | 34 |
| 126 Pulpit | 34 |
| 211 Step to Pilothouse | 35 |
| 105 Port Bow | 35 |
| 134 Tender Helm | 35 |
| 116 Bridge Helm | 35 |
| 113 Cockpit Stbd | 36 |
| 220 Electrical Distribution Panel | 36 |
| 221 Bridge Access | 36 |
| 228 Guest Head | 36 |
| 112 Cockpit Port | 37 |
| 329 Engine Room | 37 |
| 225 Guest Cabinet | 37 |
| 344 Salon Stereo | 37 |
| 210 Bar | 38 |
| 345 Typ Speaker | 38 |
| 133 Tender Seats | 38 |
| 317 PH VHF Radio SH | 38 |
| 315 PH Radar Display | 39 |
| 320 PH Battery Monitor | 39 |
| 224 Guest Night Table | 39 |
| 103 Stern | 39 |
| 322 PH Stereo | 40 |
| 204 Salon Stbd Fwd | 40 |
| 254 3rd Stateroom Bunks | 40 |
| 135 Tender Motor | 40 |

| | |
|-----------------------|----|
| 328 Engine Port | 40 |
| КОНТАКТЫ | 41 |
| Контактная информация | 41 |
| Телефоны | 41 |
| Время работы | 41 |
| Адрес | 41 |

ХАРАКТЕРИСТИКИ

Обзор

Foreign Exchange is a 1997 Bayliner 4788 raised pilothouse motor yacht, in turn-key condition. With a three stateroom and two head layout, the Bayliner 4788 is very popular for the Great Loop, coastal cruising, a weekend getaway, or full-time living aboard. There are owners who blog about their Bayliner 4788 adventures, so there is a lot of information available regarding dependability, reliability and livability of this model. Her current owners purchased Foreign Exchange in 2014, and brought her from Canada to brackish water in Jacksonville, FL. Her condition was what sold them on this particular Bayliner 4788, and they have maintained that condition. They found their next boat, so Foreign Exchange is ready for her next owners.

Основная информация

Тип судна: Моторная яхта

Модельный год: 1997

Год постройки: 1997

Страна: United States

Размеры

Длина общая: 47' 0" (14.33m)

Ширина: 14' 11" (4.55m)

Макс. осадка: 3' 4" (1.02m)

Трапы: 18' 2" (5.54m)

Скорость, вместимость и масса

Крейс. скорость: 8 Kts. (9 MPH)

Макс. скорость: 17 Kts. (20 MPH)

Водоизмещение: 30000 Pounds

Вместимость воды: 200 Gallons

Вместимость сточного бака: 48 Gallons

Объем топливного бака: 444 Gallons

Размещение

Всего кают: 3

Всего коек: 4

Всего ком. состава: 2

Корпус и палуба

Материал корпуса: Fiberglass

Информация о двигателе

Двигатели: 2

Производитель: Cummins

Модель: Cummins 6BTA5.9-M2

Тип двигателя: Inboard

Тип топлива: Diesel

ПОДРОБНОЕ ОПИСАНИЕ

MAIN DESCRIPTION

Foreign Exchange is a 1997 Bayliner 4788 raised pilothouse motor yacht, in turn-key condition. With a three stateroom and two head layout, the Bayliner 4788 is very popular for the Great Loop, coastal cruising, a weekend getaway, or full-time living aboard. There are owners who blog about their Bayliner 4788 adventures, so there is a lot of information available regarding dependability, reliability and livability of this model. Her current owners purchased Foreign Exchange in 2014, and brought her from Canada to brackish water in Jacksonville, FL. Her condition was what sold them on this particular Bayliner 4788, and they have maintained that condition. They found their next boat, so Foreign Exchange is ready for her next owners.

1997 47' BAYLINER VESSEL WALKTHROUGH

Entering the Bayliner 4788 from the fiberglass swim platform, you step into the carpeted cockpit through a starboard transom door. From the cockpit, you can step up to the port or starboard side deck, climb a ladder to the flybridge or walk into the salon via the sliding glass door. Once inside the salon, you will find a chair and side table to port, the galley port forward, L-shaped seating with a high/low folding table starboard aft and entertainment center/wet bar starboard forward. The carpeted centerline companionway, accessed via 4 steps down, leads to the master and guest staterooms, and the 2 heads. Four carpeted stairs starboard lead up from the salon to the raised pilothouse. The carpeted Bayliner 4788 pilothouse features both port and starboard side deck access doors, wood steps with non-skid coverings up to the flybridge with an easy opening Plexiglass door, a centerline Captain's chair at the helm, and an L-shaped seating area with a folding table to port. The engine room is accessed via salon sole hatches or through a removable companionway step.

1997 47' BAYLINER ACCOMMODATIONS

Foreign Exchange offers a master stateroom forward with an island queen size berth and ensuite head, a guest stateroom to port, just aft of the master stateroom, with over/under bunks and a removable partition and door. The third stateroom is a VIP guest stateroom port aft of the master with a queen size berth. The guest head with enclosed shower is starboard across from the VIP guest stateroom.

1997 47' BAYLINER COCKPIT

The roomy cockpit of Foreign Exchange features: a hardtop, transom door to the fiberglass swim platform, snap-in cockpit carpet in three separate bound pieces for ease of removal, molded steps to both side decks, sliding glass door to the salon with a snap-on Navy blue canvas cover,

3 hatches for access to the lazarette, a non-skid deck, a mountable Force 10 gas grill with mounting hardware and propane tank, a mounted brush/rod holder, storage cabinets, and a stainless steel ladder to the flybridge.

1997 47' BAYLINER SALON

The large, bright salon of Foreign Exchange has a neutral colored L-shaped settee with storage under the cushions, and a high/low wood folding table starboard aft, entertainment center/wet bar with a Nutone blender built into the Corian counter and U-Line ice maker starboard forward, a chair, floor lamp and end table to port, neutral carpeted sole, engine room access via hatches in the sole, large opening side windows with coordinating valances, screens and blinds, and a Toshiba television hidden in a cabinet. The single floor layout makes the salon large and inviting, and lets the cook stay part of the conversation while entertaining. The salon has good headroom which adds to the overall large salon.

1998 47' BAYLINER GALLEY

The large galley of Foreign Exchange is situated port forward in the salon, and is equipped with: a Norcold refrigerator/freezer (New in 2017), a Whirlpool microwave oven, a Frigidaire trash compactor, a Princess 3-burner electric cooktop with a wood cutting board surface and oven, double stainless steel sinks, a pull-out Price Pfister spray faucet, neutral Corian countertops, numerous storage cabinets and drawers, and a wood sole.

1997 47' BAYLINER DINING

Interior dining space on Foreign Exchange is at the high/low folding table in the salon.

1997 47' BAYLINER MASTER STATEROOM

The master stateroom on Foreign Exchange is forward 2 steps up from the companionway and features: an island queen size berth, 4 curtained portlights, 2 overhead hatches with built-in sliding covers, 2 reading lights, a lighted hanging locker to port with a drawer beneath, a cabinet to port with 2 shelves, a stereo control to port, 6 under bed storage drawers, a padded headboard, a mirror behind the bed, a cabinet to starboard with 2 shelves, a lighted locker to starboard with 3 shelves and a drawer beneath as well as a shoe cubby with a fold-down door, a control for AC/heat, numerous ceiling lights, a carpeted sole. Access to the ensuite head is to starboard with a latching swinging door. Foreign Exchange is currently configured with the third stateroom open to the master stateroom. This configuration makes the following amenities part of the master stateroom: floor to ceiling double mirrored doors with lighted lockers, one side with 5 drawers and the other side with a wall safe and built-in shelves.

1997 47' BAYLINER GUEST STATEROOM

The guest stateroom is right off the master offering over/under bunks, a carpeted sole, a closable vent, 3 ceiling lights, and 2 curtained porthlights. A unique door partition configuration allows the bunks to be separate from the master stateroom, or part of the master stateroom. The upper bunk is a Pullman. The partition and door have never been installed but are included, and still wrapped from the factory.

1997 47' BAYLINER MASTER HEAD

The master head on Foreign Exchange is accessible up one step, with a swinging mirrored door. It features fiberglass sole and lower walls, a glass shower door, a stand-up shower/bath tub with a removable shower head, a molded counter and sink with a single lever faucet, a cabinet door under the sink with 2 storage shelves, a mirrored wall behind the sink with a swinging door and 3 shelves, a porthlight with opening blinds, a Vacuflush head, an exhaust fan, 2 ceiling vanity lights, a ceiling shower light, 2 additional ceiling lights, 2 wall hooks, 5 towel bars, and a porthlight in the shower/bath tub with a privacy cover.

1997 47' BAYLINER VIP GUEST STATEROOM

The VIP guest stateroom offers a queen size berth, a sliding pocket door to the companionway, 2 reading lights, 5 overhead lights, 2 curtained porthlights, a hanging locker, a cork bulletin board, 2 under bed storage drawers, a nightstand with a drawer and cabinet, a padded headboard in front of a mirrored wall, 2 stereo speakers, a closable AC/heat vent, wall hooks, and carpeted sole.

1997 47' BAYLINER GUEST/DAY HEAD

The guest/day head on Foreign Exchange is starboard across from the VIP guest stateroom, up one step, with a swinging mirrored door. It features fiberglass sole and lower walls, a bi-fold shower door, a stand-up shower with a removable shower head, a molded counter and sink with a single lever faucet, 2 cabinet doors under the sink with 2 storage shelves, a mirrored wall behind the sink with 2 sliding doors and a porthlight and unique bottle storage rack installed by a previous owner, 2 swinging mirrored cabinet doors with 2 storage shelves, a Vacuflush head, an exhaust fan, 4 ceiling vanity lights, a wall hook and 2 towel bars.

1997 47' BAYLINER LAUNDRY/CENTRAL VACUUM

The Ariston combination washer/dryer (New 2016) is in the companionway to port, across from the built-in central vacuum which is accessible behind the smoked sliding glass door.

1997 47' BAYLINER PILOTHOUSE

The carpeted air conditioned raised pilothouse offers a full helm forward with burled wood accents, a Navy blue leather movable helm seat with folding arms, deck access doors both port and starboard, an L-shaped bench seat with storage aft to port, an overhead storage cabinet, a wood folding table, a storage drawer, electrical panel with smoked glass doors and a fold-up glass and Formica top, steps to the flybridge, and steps starboard aft to the salon. Foreign Exchange has a removable cushion and footboard in front of the port deck access door which gives additional seating when in place. The wrap around windows let in plenty of light and provide unimpeded viewing while underway. The side windows have Navy blue canvas covers which snap-on in the interior of the pilothouse. The windshield, with 3 electric wipers has a Navy blue cover which snaps-on on the exterior of the pilothouse.

1997 47' BAYLINER FLYBRIDGE

The flybridge is perfect for open air cruising and entertaining. There is plenty of room for guests. Foreign Exchange features a Navy blue canvas bimini top attached to the radar arch, non-skid deck, an opening to the ladder to the cockpit, a hatch and internal stairs to the pilothouse, full helm forward with Navy blue canvas cover, Jabsco searchlight, single helm seat, wrap-around seating with storage and removable cushion port aft, bench seat with storage and removable cushion to starboard, and tender storage. A tender can be lifted with the tender crane. The wet bar to aft starboard features a Norcold Model NR751BB refrigerator (New 2018), sink, and storage.

1997 47' BAYLINER ENTERTAINMENT EQUIPMENT

Shakespeare TV antenna (2016) Toshiba TV in the salon cabinet Yamaha DVD Player DVD-E810 Yamaha Stereo RX-E810 Sima Stereo Speaker Selector SSW-L4EX Energy Speakers

1997 47' BAYLINER ELECTRONICS

Pilothouse computer with MapTech software (New 2018) Pilothouse Raytheon R21XX Rastar Scan Radar Pilothouse Standard Horizon Matrix GX300S VHF Pilothouse Raytheon Raydata tridata Pilothouse Danforth magnetic compass Pilothouse ICOM IC-M802 VHF Pilothouse Standard Horizon GPS Chart CP390i Pilothouse Autohelm ST7000 Auto Pilot Glendinning Engine Synchronizer Flybridge Standard Horizon GPS Chart CP390i Flybridge Danforth Magnetic Compass Flybridge Autohelm ST6000 Auto Pilot Flybridge Raytheon 48? Open Array Radar Flybridge Raytheon Raydata Tridata Flybridge Raytheon Ray210 VHF Flybridge JVC Stereo KS-R127

1997 47' BAYLINER ELECTRICAL SYSTEM

Westerbeke BTDG 12.5 kw generator with 1335 hours
Prosine 2.0 2000 watt inverter/charger with remote panel
Pro Mariner 60 amp battery charger
50 Amp power cord with Glendenning retrieval
2 X 30 Amp Shore Cords
3 8D House batteries (New 2019)
Generator battery (New 2019)

1997 47' BAYLINER ENGINE/MECHANICAL SYSTEM

Twin Cummins 6BTA5.9-M2 330 hp main engines with approximately 2900 hours
ZF gearboxes
Hynautics hydraulic steering system
Racor R90P fuel filter
Racor fuel filter for the generator
Fuel manifold
Bennett trim tabs
Marine Air Systems reverse cycle air conditioning/heating system
Seaward 18 gallon water heater
Tankwatch holding tank level monitor system
New black water system hoses in 2016
Vacuflush system vacuum generators rebuilt 2017
Village Marine Water Maker NF450 18.7gph

1997 47' BAYLINER DECK EQUIPMENT

H1100 Muir Cougar anchor windlass with foot controls
250' 3/8" anchor chain
Bruce anchor
Stainless steel rails with lifeline
Stainless steel deck hardware with lifeline
Folding rail mounted fender rack
Pulpit
Wash-down forward and aft
Non-skid deck
Foredeck seating with removable cushion
Foredeck lockers
Fiberglass swim platform
Stainless steel swim ladder
Fresh water hot/cold shower aft
Bottom painted November 2017 - Cleaned by a diver regularly

1997 47' BAYLINER TENDER

Brig 11'10" RIB
Mercury 25 hp 2-stroke outboard
Flybridge tender crane (US Marine)

1997 47' BAYLINER EXCLUSIONS

Sellers' personal belongings
Staging materials provided by broker, including cockpit chairs

1997 47' BAYLINER DISCLAIMER

The Company offers the details of this vessel in good faith but cannot guarantee or warrant the accuracy of this information nor warrant the condition of the vessel. A buyer should instruct his agents, or his surveyors, to investigate such details as the buyer desires validated. This vessel is offered subject to prior sale, price change, or withdrawal without notice.

Исключения

При продаже яхты исключаются личные вещи владельца.

Отказ от ответственности

Компания предоставляет описание судна или яхты добросовестно, но не может гарантировать точность этой информации, а также не ручается за техническое состояние. Покупатель должен проинструктировать своих агентов или оценщиков исследовать представленную информацию более подробно, по собственному желанию. Продажа судна или яхты, изменение цены или снятие с продажи будет происходить без предварительного уведомления.

ФОТОГРАФИИ

102 Stbd Qtr



118 Bridge Seating Port



115 Bridge-Cockpit Ladder



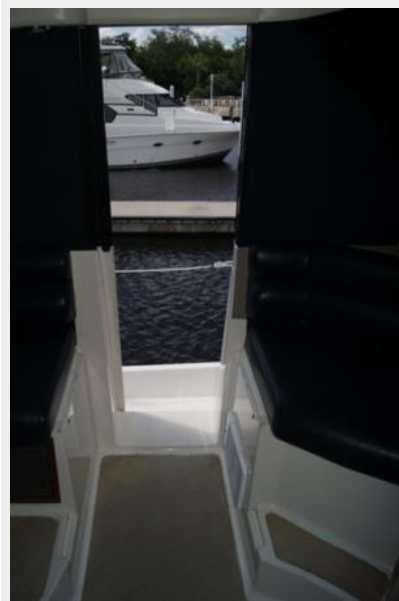
303 Bridge 12v Panel



306 Bridge TriData



218 Pilothouse Door Port



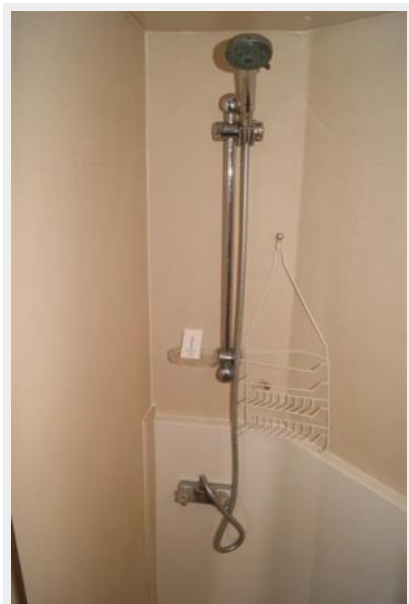
325 Washer Dryer Combo



229 Guest Vanity



232 Guest Shower



121 Bridge 12v Panel



243 Master Closet



236 Master Berth



240 Master Port



350 Galley Trash Compactor



242 Master Closet



124 Bridge Bar_LI



244 Master Cabinet



245 Master Closet



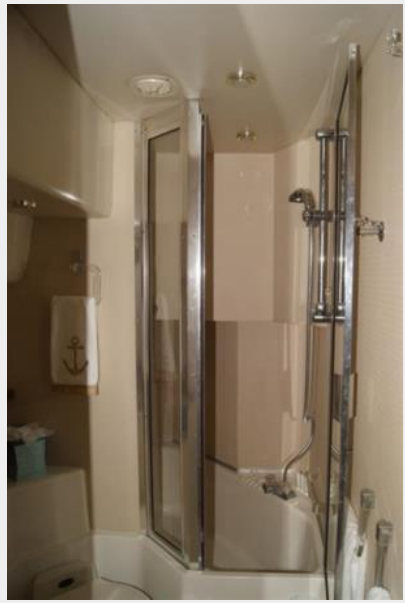
247 Master Head



106 Pulpit Looking Aft



249 Master Shower



302 Bridge Helm Stbd Instruments



301 Bridge Helm Port Instruments



209 Entertainment



208 Galley Sink



207 Galley Counter Aft



308 Bridge VHF



314 PH Chartplotter



309 Bridge Frig



316 PH Radio ICOM



311 EPIRB



313 PH Compt Control



215 Helm



318 PH TriData



333 Engine Glendinning



119 Bridge Seating Port



335 ER Fire Ext



336 FW Pump & Accumulator



337 Pro Mariner 60A Charger



349 Galley Range



351 Galley Microwave



246 Master Cabinet



207a Galley Fwd



305 Bridge Chartplotter



304 Bridge Autphelm



131 Tender



307 Bridge Stereo



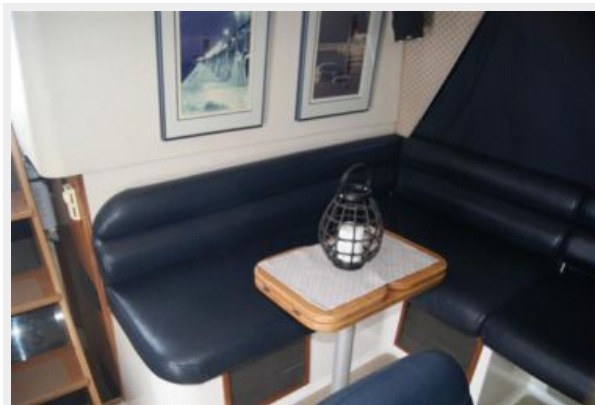
132 Tender Stored



310 Bridge Compass



214 Helm Seating Aft



321 PH Compass



323 PH Speaker Selector



324 Central Vacuum



319 PH Autohelm



326 Holding Tank Vacuum Generator



327 Engine Port



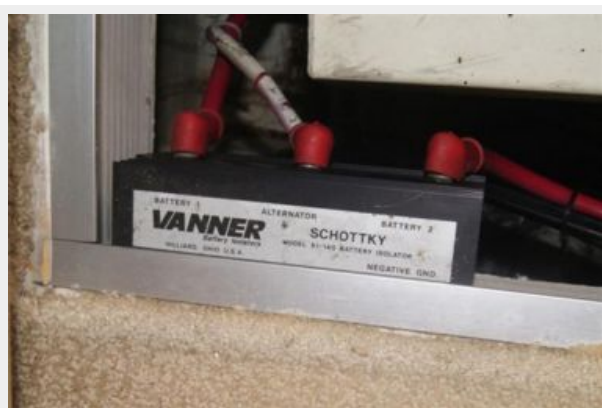
331 Engine Stbd (2)



226 Guest Stateroom



332 Battery Isolator



334 Engine Air Sep



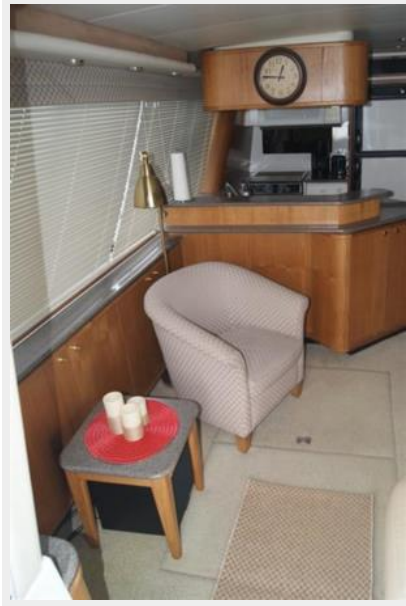
338 ProSine Inverter



339 Foredeck Anchor Windlass



201 Salon Port Fwd



231 Guest Shower



343 Typ AC Control



104 Port Qtr



346 Salon Wet Bar



347 Galley Frig



233 Companionway



241 Master Stbd



000 HR



205 Salon Stbd Aft



250 Master Head



206 Salon Port Aft



125 Bridge VHF & Stereo Cabinet



253 Master Vanity



251 Master Bath



216 Helm Seating Port



108 Bow Seat



223 Guest Stateroom



257 3rd Stateroom Bunks



117 Captains Chair



330 Engine Stbd



126 Pulpit



105 Port Bow



211 Step to Pilothouse



116 Bridge Helm



134 Tender Helm



113 Cockpit Stbd



220 Electrical Distribution Panel



221 Bridge Access



228 Guest Head



329 Engine Room



112 Cockpit Port



225 Guest Cabinet



344 Salon Stereo



345 Typ Speaker



210 Bar



317 PH VHF Radio SH



133 Tender Seats



320 PH Battery Monitor



315 PH Radar Display



224 Guest Night Table



103 Stern



322 PH Stereo



204 Salon Stbd Fwd



254 3rd Stateroom Bunks



135 Tender Motor



328 Engine Port



КОНТАКТЫ

Андрей Шестаков (Andrey Shestakov) – ведущий яхтенный брокер отдела продаж яхт и судов компании Shestakov Yacht Sales Inc. Официальный представитель Shestakov Yacht Sales Inc. для русскоговорящих клиентов в центральном офисе компании в Майами/Форт Лодердейл/Флорида/США.

Контактная информация

Email: andrey@shestakovyachtsales.com

Web: shestakovyachtsales.com

Телефоны

Краснодарский край: **+7(918)465-66-44**

США, Майами, Флорида: **+1(954)274-4435**

Время работы

Понедельник – Суббота: **9:00 - 21:00**
EDT

Воскресенье: **Закрето**

Адрес



Harbour Towne Marina, 850 NE 3rd St,
STE 213, Dania, FL 33004