

GATHERING PARADISE — DUTCHCRAFT



Builder: [DUTCHCRAFT](#)

Year Built: 2018

Model: Cruising Yacht

Price: PRICE ON APPLICATION

Location: United States

LOA: 56' (17.07mm)

Beam: 16.58

Max Draft: 3' 8" (1.12mm)

Cruise Speed: 28 Knots Kts. (32 MPH)

Max Speed: 32 Knots Kts. (37 MPH)

Our experienced yacht broker, Andrey Shestakov, will help you choose and buy a yacht that best suits your needs **Gathering Paradise — DUTCHCRAFT** from **our catalogue**. Presently, at **Shestakov Yacht Sales Inc.**, we have a wide variety of yachts available on **our sale's list**. We also work in close contact with all the big **yacht manufacturers** from all over the world.

If you would like to buy a yacht **Gathering Paradise — DUTCHCRAFT** or would like help answering any questions concerning purchasing, selling or chartering a yacht, please call **+1(954)274-4435**

TABLE OF CONTENTS

TABLE OF CONTENTS	2
SPECIFICATIONS	3
Overview	3
Basic Information	3
Dimensions	3
Speed, Capacities and Weight	3
Accommodations	4
Hull and Deck Information	4
Engine Information	4
PHOTOS	5
CONTACTS	14
Contact details	14
Telephones	14
Office hours	14
Address	14

SPECIFICATIONS

Overview

*****PRELIMINARY LISTING, MORE DETAILS AND PHOTOS TO FOLLOW***** The 2019 Dutchcraft carries a CE A rating for twelve people onboard. It also carries a B rating for up to 36 people onboard: **Category A -- Ocean** - This is the category with the toughest standards and covers vessels 40' and over designed to be self-sufficient for extended voyages. It is defined as the "category of boats considered suitable for seas of up to 23 feet (7 meters) significant wave height and winds of Beaufort Force 9 (41-47 knots) or less, but excluding abnormal conditions such as hurricanes."

Category B -- Offshore - These boats are designed to go offshore with the ability to handle winds up to gale force 8 of 40 knots, and seas up to 13 feet (3.96 meters). Dutch craft are purposely overbuilt boats that require minimum maintenance and provide the best and safest boating experience for all conditions! There are many commercial features which we have incorporated into our boats to bring them to this level.

Basic Information

Category: Cruising Yacht

Model Year: 2019

Year Built: 2018

Country: United States

Dimensions

LOA: 56' (17.07mm)

LWL: 50' (15.24mm)

Beam: 16.58

Max Draft: 3' 8" (1.12mm)

Speed, Capacities and Weight

Cruise Speed: 28 Knots Kts. (32 MPH) **Max Speed:** 32 Knots Kts. (37 MPH)

Water Capacity: 225 Gallons

Holding Tank: 74 Gal Gallons

Fuel Capacity: 793 Gal Gallons

Accommodations

Total Cabins: 4

Total Berths: 3

Sleeps: 8

Total Heads: 3

Hull and Deck Information

Hull Material: Fiberglass

Exterior Designer: DutchCraft

Interior Designer: DutchCraft

Engine Information

Engines: 2

Manufacturer: Volvo Penta

Engine Type: Inboard

Fuel Type: Diesel

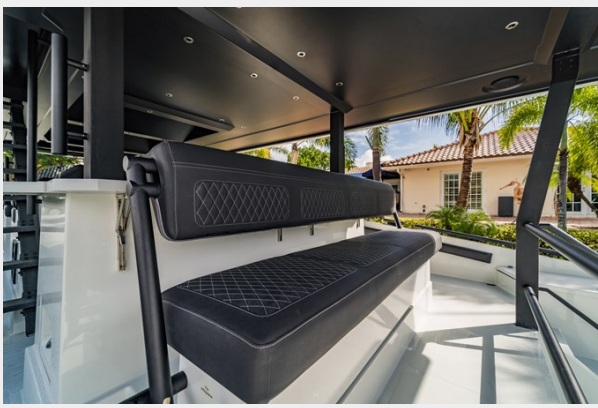
PHOTOS



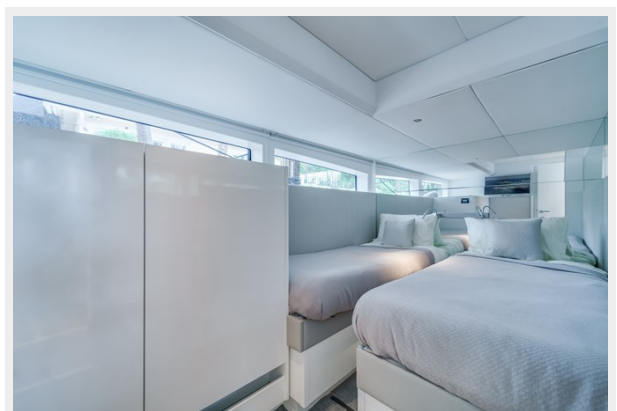
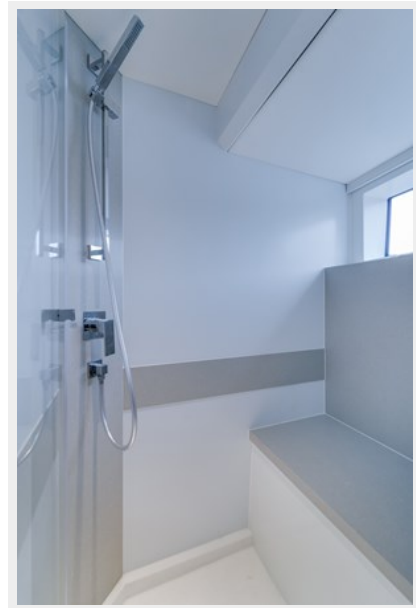
















CONTACTS

Andrey Shestakov, leading yacht broker of the sales department of Shestakov Yacht Sales Inc. Shestakov Yacht Sales Inc., the official representative of the Miami/Fort Lauderdale FL headquarters.

Contact details

Email: **andrey@shestakovyachtsales.com**

Web: shestakovyachtsales.com/en/

Telephones

USA: **+1(954)274-4435**

Office hours

Monday – Saturday: **9:00 - 21:00** EDT

Sunday: **closed**

Address



Harbour Towne Marina, 850 NE 3rd St, STE 213, Dania, FL 33004