

STORM WARNING — J BOATS



Builder: J BOATS

Year Built: 1997

Model: Cruising/Racing Sailboat

Price: PRICE ON APPLICATION

Location: United States

LOA: 40' 0" (12.19m)

Beam: 12' 0" (3.66m)

Max Draft: 7' 0" (2.13m)

Our experienced yacht broker, Andrey Shestakov, will help you choose and buy a yacht that best suits your needs **Storm Warning — J BOATS** from our catalogue. Presently, at Shestakov Yacht Sales Inc., we have a wide variety of yachts available on our sale's list. We also work in close contact with all the big yacht manufacturers from all over the world.

If you would like to buy a yacht **Storm Warning — J BOATS** or would like help answering any questions concerning purchasing, selling or chartering a yacht, please call **+1(954)274-4435**

TABLE OF CONTENTS

TABLE OF CONTENTS	2
SPECIFICATIONS	5
Overview	5
Basic Information	6
Dimensions	6
Speed, Capacities and Weight	7
Accommodations	7
Hull and Deck Information	7
Engine Information	7
DETAILED INFORMATION	8
Overview	8
Exclusions	10
Disclaimer	10
PHOTOS	11
5	11
8	11
2	11
7	11
3 (2)	12
3	12
1	12
32.jpg	12
57.jpg	13
42.jpg	13
33.jpg	13
49.jpg	13
48.jpg	13
30.jpg	13

24.jpg	14
51.jpg	14
27.jpg	14
39.jpg	14
28.jpg	14
31.jpg	14
20.jpg	15
47.jpg	15
25.jpg	15
38.jpg	15
46a.jpg	15
22.jpg	15
36.jpg	16
46.jpg	16
54a.jpg	16
50.jpg	16
41.jpg	17
55.jpg	17
13a.jpg	17
14.jpg	17
29.jpg	17
39a.jpg	17
34.jpg	18
56.jpg	18
43.jpg	18
37.jpg	18
17.jpg	18
45.jpg	18
54.jpg	19

39b.jpg	19
10	19
13.jpg	19
19.jpg	19
18.jpg	19
44.jpg	20
40.jpg	20
53.jpg	20
15.jpg	20
11 (2)	20
23.jpg	20
35.jpg	21
12.jpg	21
15 (2).jpg	21
21.jpg	21
52.jpg	21
58.jpg	21
CONTACTS	22
Contact details	22
Telephones	22
Office hours	22
Address	22

SPECIFICATIONS

Overview

Storm Warning is a very well-kept J/120 that shows pride of ownership. She has a long, successful racing history. Originally sold new by RCR in 1997 and then sold to the current owners in 2015. Always sailed on freshwater Lake Erie.

She has an exquisite vinyl wrap (no waxing the topsides!) showing a thunderstorm & then fading to blue skies. If it doesn't suit you, the wrap can be removed to the original white gelcoat with blue double boot stripe beneath.

She has a faired bottom and standing rigging is pulled every fall for winter land storage. She has a custom-made canvas cover with access door to cockpit.

She features all these recent NEW equipment and upgrades:

Saloon/Galley/V-berth/Quarter-berth

- NEW MarineLam teak & black laminate sole - 2015 - \$7045
- NEW FRP headliner saloon, v-berth, head, quarter-berth - 2015
- NEW Lewmar trim rings/screens on hatches - 2015
- NEW Jabsco head - 2018
- NEW GFCI at nav station - 2016
- NEW 110vac/USB charging receptacles added to saloon - 2017
- NEW combination 110vac/USB charging receptacle added to v-berth - 2016
- NEW dual USB charging receptacle @ nav station - 2016
- NEW 20-amp 12vdc receptacles added at nav station and galley - 2016/2017
- NEW LED day/night vision under-cabinet galley strip lights - 2016
- NEW LED day/night head light - 2016
- NEW LED day/night vision lighting at nav station - 2016
- NEW LED day/night vision overhead saloon lighting - 2018
- NEW Microwave oven - 2016

Deck and Rigging

- NEW Jib sheets - 2018
- NEW Spin sheets - 2018
- NEW Main halyard - 2018
- NEW Spin halyard - 2019
- NEW Jib halyards - 2016, 2018
- NEW Outhaul control line (run to cockpit) - 2016
- NEW Lewmar winch drums (6) and pawls & springs replaced on primary, mainsheet, and cabin top winches - 2016. Cleaned & serviced every 2 years - last 2019
- NEW (2) Lewmar One-Touch winch handles - 2016

- NEW Lewmar DC-2 line clutches - 2016
- NEW Additional Lewmar DC-2 line clutches installed - 2016
- NEW Ball-bearing deck organizers - 2016
- NEW UPSIZED stainless/ball-bearing mast base turning blocks for halyards and boom control lines - 2016
- NEW UPSIZED stainless/ball-bearing spin sheet blocks - 2016
- NEW Stainless/ball-bearing snatch block - 2016
- NEW Spinlock 63M crossover sheaves professionally installed; backed up w/ G-10 block reinforcing w/ captive nuts (Spinlocks can be removed for service w/o disturbing the headliner) - 2016

Other

- NEW SmartPlug shore power system installed - 2017
- NEW SmartPlug / extension cord adapter - 2017
- NEW 50-ft SmartPlug shore power cord - 2019
- NEW 100-ft, 10-ga heavy-duty travel shore power cord - 2017
- Deck penetrations for all traveler, winch, jib car track, line clutch bolts and electronics cables were professionally epoxy potted and butyl sealed - 2016
- Stainless steel backing plates installed on all line clutches - 2016
- NEW stainless safety grab handles professionally installed at companionway; backed up w/ G-10 block reinforcing – 2016
- NEW HDPE sink topper for additional counter space - 2016
- NEW gel batteries (2) - 2019
- NEW Master Volt automatic battery charger - 2019
- Halyard line storage bags fitted to companionway opening – 2016
- Large plastic bags to protect mattresses in both cabins as well as fitted mattress pads

Basic Information

Category: Cruising/Racing Sailboat

Model Year: 1997

Year Built: 1997

Country: United States

Dimensions

LOA: 40' 0" (12.19m)

LWL: 35' 0" (10.67m)

Beam: 12' 0" (3.66m)

Max Draft: 7' 0" (2.13m)

Speed, Capacities and Weight

Displacement: 13900 Pounds

Water Capacity: 80 Gallons

Holding Tank: 12 Gallons

Fuel Capacity: 27 Gallons

Accommodations

Total Cabins: 1

Total Heads: 1

Hull and Deck Information

Hull Material: Fiberglass

Engine Information

Engines: 1

Manufacturer: Yanmar

Model: JHE2

Engine Type: Inboard

Fuel Type: Diesel

DETAILED INFORMATION

Overview

Galley

- Ice Box with refrigeration
- 110V and engine driven water heater
- Microwave – installed 2016
- Pressure water- hot and cold
- 2 LPG tanks.
- 110vac and engine-heated water heater
- 2-Burner LPG range
- 110vac Microwave
- Pressure water
- Varnished cockpit table with storage bag & support
- Sunshades on ports
- Drop leaf table with cover

Deluxe Trim Group

- Cabinets & bookshelves over settees (4)
- Drawers in nav station (3)
- Full length shelves over berths in forward & aft cabins
- Bookshelf & reading light over seat in rear cabin
- Teak siding in main cabin

Electronics

- B & G autopilot 10/01, below deck steering
- 3 Fluxgate KVH compasses
- B&G depth sounder in cockpit
- B&G true & apparent wind
- Standard VHF
- Garmin GPS with map
- Speed and distance logs
- Sony 10 CD changer
- Cockpit speakers

Electrical system

- 12v DC / 110v AC (SmartPlug) w/ 50' shore cord and 100' travel cord
- GFCI protected
- 2 gel batteries (2)
- automatic shore power battery charger

Deck Equipment

Hauled for bottom paint every spring. The keel and hull were faired and painted with Micron 33. Blister-free hull.

- Winter storage cover (mast removed) to waterline
- 2 Fortress anchors -both with chain & road
- Removable bow roller
- Bow pulpit and rails
- Removable (socketed) stanchions with lifelines
- Dodger for deliveries or cruising
- USCG safety package
- Fiberglass decks
- Complete fenders and lines
- Life jackets (3)
- Navigation lights
- Interior cushions stored indoors (blue)
- USCG compliant horseshoe
- Lifesling (new 2017)
- Racing boots for deck cleats
- Port & starboard entrance gates
- Cockpit sunshade
- Custom Helm & binnacle cover
- Cockpit Cushions

Sails Inventory for Primary sails are all recent North Sails.

- 2018 A3
- 2018 #2 XI SPORT ARAMID
- 2018 A2
- 2017 3DI 760 MAIN
- 2017 3DI #3
- 2017 3DI AP #1
- 2017 A1.5
- 2016 DOYLE CODE 0.
- Various delivery sails

Rigging

- Hydraulic Backstay adjuster
- Hall rigid quick vang

- Rod rigging
- Harkin roller furling
- Carbon mast stepped on keel
- Carbon retractable bow sprit
- 6 Self-tailing Harken winches
- Haylards main new in 2018, spin 2018, jib 2016 & 2018
- Sheets – complete jib, main, and spin sheets (new 2019)
- Hardware bags for companion way
- Spinnaker Sock

Mechanical Equipment

- Automatic and manual bilge pumps
- Cockpit controls
- Engine alarm
- Emergency engine stop
- Fresh water cooling system
- Fuel filters
- Emergency fuel shutoff valve
- Manual head with holding tank
- Manual wheel steering
- Martec 2-blade folding propeller

Additional:

- Cockpit Cushions
- Dock Lines & Fenders
- Safety Gear
- Custom Steel Fixed Cradle
- Life raft Winslow 10 man MAC
- Two Anchors with Rode

Exclusions

Owner's personal belongings.

Disclaimer

The Company offers the details of this vessel or yacht in good faith but cannot guarantee or warrant the accuracy of this information nor warrant the condition of the vessel. A buyer should instruct his representatives, agents, or his surveyors, to investigate such details as the buyer desires validated. This vessel or yacht is offered subject to prior sale, price change, or withdrawal without notice.

PHOTOS

5



8



7



2



3 (2)



3



1



32.jpg



57.jpg



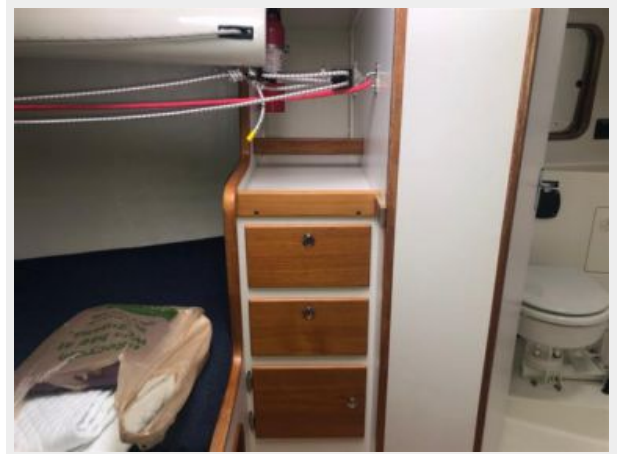
42.jpg



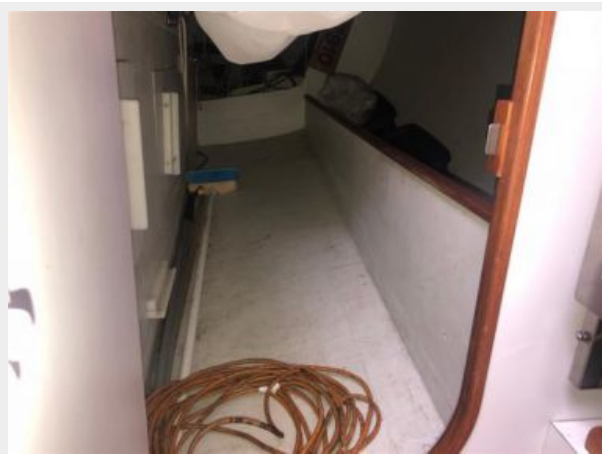
33.jpg



49.jpg



48.jpg



30.jpg



24.jpg



51.jpg



27.jpg



39.jpg



28.jpg



31.jpg



20.jpg



47.jpg



25.jpg



38.jpg



46a.jpg



22.jpg



36.jpg



46.jpg



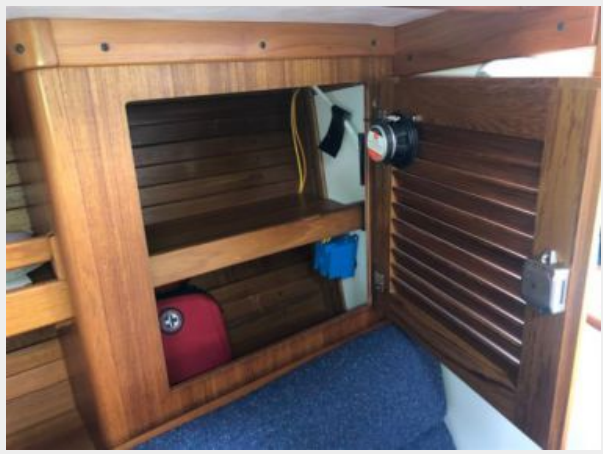
50.jpg



54a.jpg



55.jpg



41.jpg



13a.jpg



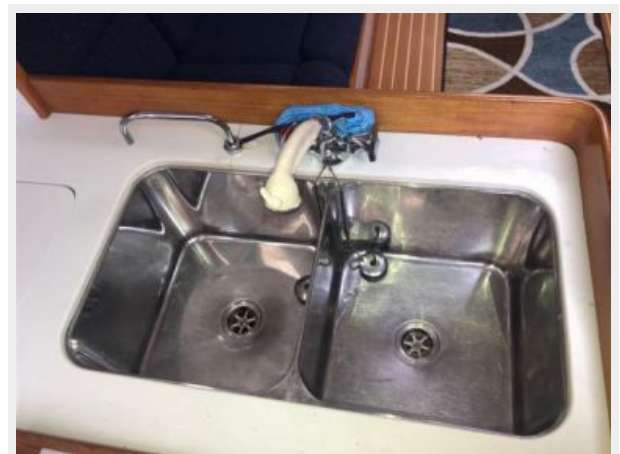
14.jpg



29.jpg



39a.jpg



34.jpg



56.jpg



43.jpg



37.jpg



17.jpg



45.jpg



39b.jpg



54.jpg



10



13.jpg



19.jpg



18.jpg



44.jpg



40.jpg



53.jpg



15.jpg



11 (2)



23.jpg



35.jpg



12.jpg



15 (2).jpg



21.jpg



52.jpg



58.jpg



CONTACTS

Andrey Shestakov, leading yacht broker of the sales department of Shestakov Yacht Sales Inc. Shestakov Yacht Sales Inc., the official representative of the Miami/Fort Lauderdale FL headquarters.

Contact details

Email: andrey@shestakovyachtsales.com

Web: shestakovyachtsales.com/en/

Telephones

USA: +1(954)274-4435

Office hours

Monday – Saturday: **9:00 - 21:00** EDT

Sunday: **closed**

Address



Harbour Towne Marina, 850 NE 3rd St,
STE 213, Dania, FL 33004