

JOLLY MON — C & C YACHTS



Builder: C & C Yachts

Year Built: 1988

Model: Cruising Sailboat

Price: PRICE ON APPLICATION

Location: United States

LOA: 35' 0" (10.67m)

Beam: 11' 2" (3.40m)

Max Draft: 6' 4" (1.93m)

Our experienced yacht broker, Andrey Shestakov, will help you choose and buy a yacht that best suits your needs **Jolly Mon — C & C Yachts** from our catalogue. Presently, at Shestakov Yacht Sales Inc., we have a wide variety of yachts available on our sale's list. We also work in close contact with all the big yacht manufacturers from all over the world.

If you would like to buy a yacht **Jolly Mon — C & C Yachts** or would like help answering any questions concerning purchasing, selling or chartering a yacht, please call **+1(954)274-4435**

TABLE OF CONTENTS

TABLE OF CONTENTS	2
SPECIFICATIONS	6
Overview	6
Basic Information	6
Dimensions	6
Speed, Capacities and Weight	6
Accommodations	6
Hull and Deck Information	7
Engine Information	7
DETAILED INFORMATION	8
Overview	8
Exclusions	10
Disclaimer	10
PHOTOS	11
10	11
6	11
12	11
15	11
14	12
13	12
19	12
5	12
17	13
21	13
18	13
16	13
20	13
22	13

26.jpg	14
31a.jpg	14
41.jpg	14
40.jpg	14
39.jpg	14
30.jpg	14
35.jpg	15
30a.jpg	15
29.jpg	15
31.jpg	15
36.jpg	15
23.jpg	15
38a.jpg	16
37.jpg	16
34a.jpg	16
32.jpg	16
34.jpg	16
38.jpg	16
1.jpg	17
29a.jpg	17
28.jpg	17
27.jpg	17
24.jpg	17
25.jpg	17
33.jpg	18
17.jpg	18
16.jpg	18
21.jpg	18
29.jpg	18

31.jpg	18
26.jpg	19
3.jpg	19
15.jpg	19
9.jpg	19
25.jpg	20
18.jpg	20
2b.jpg	20
3b.jpg	20
22.jpg	21
14.jpg	21
23.jpg	21
1.jpg	21
2.jpg	22
6.jpg	22
12.jpg	22
27.jpg	22
13.jpg	23
8.jpg	23
10.jpg	23
28.jpg	23
5.jpg	23
19.jpg	23
11.jpg	24
20.jpg	24
30.jpg	24
7.jpg	24
4.jpg	24
7a.jpg	24

CONTACTS	25
-----	-----
Contact details	25
-----	-----
Telephones	25
-----	-----
Office hours	25
-----	-----
Address	25
-----	-----

SPECIFICATIONS

Overview

The LAST C&C 35 MK III ever built. Always on freshwater between Lake Ontario and Lake Erie, with current owner having it the last 20 years. Upgrades include custom opening ports in the cabintop, 8 in total, instead of fixed ports. New teak and holly cabin sole that glistens! A new refrigerator added in October 2019. A lot of extra gear included, everything goes!

*October 2019 Survey Available to Serious Prospects.

Basic Information

Category: Cruising Sailboat

Model Year: 1988

Year Built: 1988

Country: United States

Dimensions

LOA: 35' 0" (10.67m)

LWL: 28' 0" (8.53m)

Beam: 11' 2" (3.40m)

Max Draft: 6' 4" (1.93m)

Speed, Capacities and Weight

Displacement: 12150 Pounds

Water Capacity: 42 Gallons

Holding Tank: 23 Gallons

Fuel Capacity: 20 Gallons

Accommodations

Total Cabins: 2

Total Berths: 3

Total Heads: 1

Hull and Deck Information

Hull Material: Fiberglass

Engine Information

Engines: 1

Manufacturer: Yanmar

Model: 3GM30F

Engine Type: Inboard

Fuel Type: Diesel

DETAILED INFORMATION

Overview

Electronics

- Raymarine Tacktick Solar Instruments mounted in cockpit and at helm
- Speed, Depth, Log, Wind

Rigging

- Stainless steel rod rigging
- Navtech Hydraulic Backstay adjuster
- Adjustable Baby Stay
- All Lines lead to cockpit with clutches
- Harken Roller Furling w/Split Drum
- (2) Barient #28A self-tailing primary winches mounted forward
- (2) Barient #27 STA self-tailing secondary winches mounted aft
- (2) Barient #21 STA Halyard Winches on coachroof
- Winch Handles
- Custom Mainsheet Traveler System on Coachroof
- Mainsail Harken track/cars
- Hall Model B-18 Quick Vang
- Complete Spinnaker Gear

Sails

- Quantum Mainsail
- Haarstick 150% Genoa (2)
- Haarstick 155% Furling Genoa
- Haarstick 140% Genoa
- Haarstick #3 Jib
- Haarstick Spinnaker .75 oz.
- Quantum Spinnaker .6 oz.

Electrical/Mechanical

- Electric bilge pump

- Battery charger
- Marine head
- Hot & Cold Water
- Electric bilge pump
- 12 volt DC electrical system
- 3 Batteries (2 House and 1 Start)
- Circuit breaker distribution panels AC and DC
- 110V shore power with dockside electrical cable
- Running lights
- Navigation lights
- Interior cabin lights
- Stereo system with two cabin speakers & two cockpit speakers with subwoofers

Accommodations

- Sleeps six
- Opening hatches in V berth, head, main salon
- Opening ports in quarter berth, head and above hanging locker
- Custom opening ports installed (8 of them in total) in the salon
- NEW teak and holly cabin sole with 6 coats of epifanes glossy clear varnish
- Teak Salon Table
- Marine head
- Integral sink with drain to seacock
- Hot & cold pressure water to sink
- Shower head
- Screens for overhead hatches
- Teak Sidewalls in V berth and quarter berth
- Extra Teak Book Racks

Galley

- L Shaped Galley to port
- 3 burner propane stove with oven
- Double stainless steel sink with hot and cold pressure water
- **NEW** Refrigeration in Large Insulated Ice Box
- Plenty of storage space

Additional

- Cockpit Cushions

- Safety Gear
- Teak Cockpit folding table with recent varnish
- Teak Drink holder with recent varnish
- Fenders
- Docklines
- Diesel Cans
- Miscellaneous parts & spares
- Navigation Charts
- Bosuns Chair
- Flagstaff

Exclusions

Owner's personal belongings.

Disclaimer

The Company offers the details of this vessel or yacht in good faith but cannot guarantee or warrant the accuracy of this information nor warrant the condition of the vessel. A buyer should instruct his representatives, agents, or his surveyors, to investigate such details as the buyer desires validated. This vessel or yacht is offered subject to prior sale, price change, or withdrawal without notice.

PHOTOS

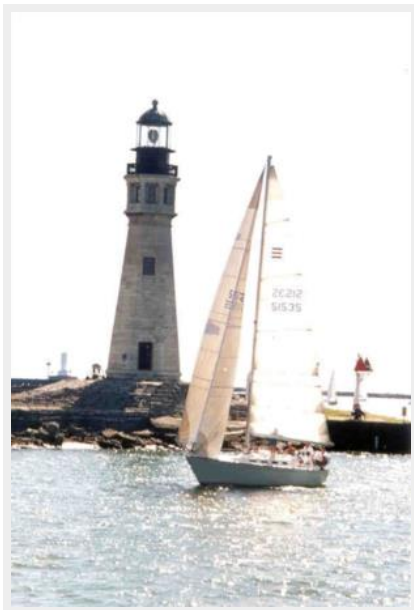
6



10



12



15



14



13



19



5



17



21



16



18



20



22



26.jpg



31a.jpg



41.jpg



40.jpg



39.jpg



30.jpg



35.jpg



30a.jpg



29.jpg



31.jpg



36.jpg



23.jpg



38a.jpg



37.jpg



34a.jpg



32.jpg



34.jpg



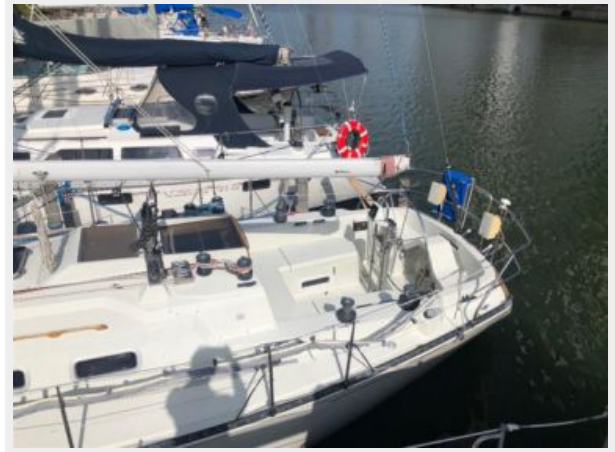
38.jpg



1.jpg



29a.jpg



28.jpg



27.jpg



24.jpg



25.jpg



33.jpg



17.jpg



16.jpg



21.jpg



29.jpg



31.jpg



26.jpg



3.jpg



15.jpg



9.jpg



18.jpg



25.jpg



2b.jpg



3b.jpg



22.jpg



14.jpg



23.jpg



1.jpg



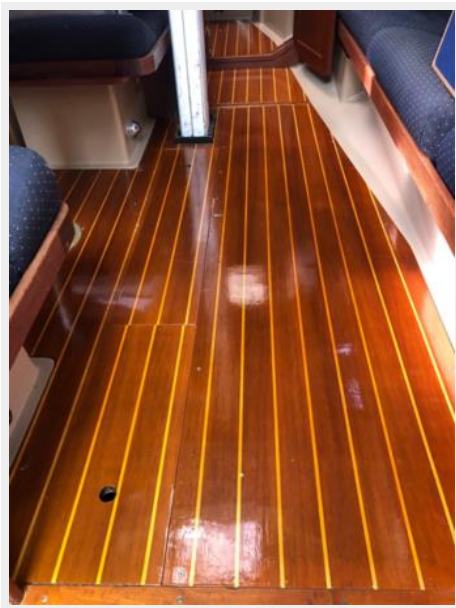
6.jpg



2.jpg



12.jpg



27.jpg



13.jpg



8.jpg



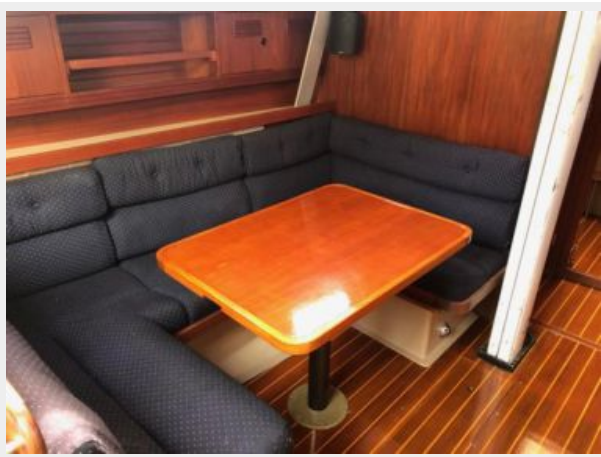
10.jpg



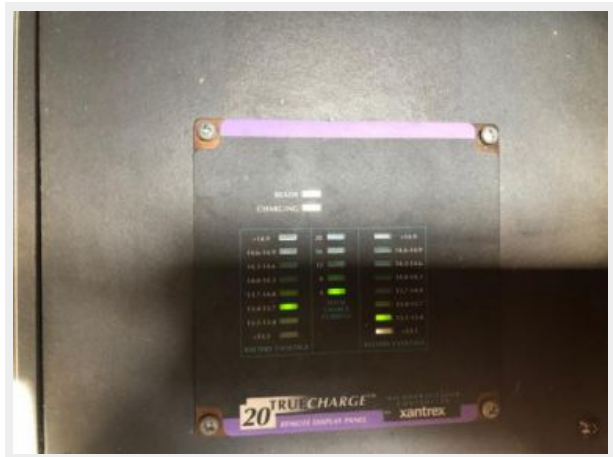
28.jpg



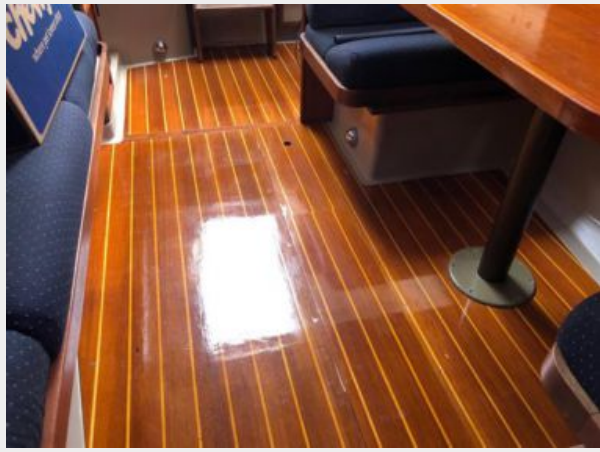
5.jpg



19.jpg



11.jpg



20.jpg



30.jpg



7.jpg



4.jpg



7a.jpg



CONTACTS

Andrey Shestakov, leading yacht broker of the sales department of Shestakov Yacht Sales Inc. Shestakov Yacht Sales Inc., the official representative of the Miami/Fort Lauderdale FL headquarters.

Contact details

Email: andrey@shestakovyachtsales.com

Web: shestakovyachtsales.com/en/

Telephones

USA: +1(954)274-4435

Office hours

Monday – Saturday: **9:00 - 21:00** EDT

Sunday: **closed**

Address



Harbour Towne Marina, 850 NE 3rd St,
STE 213, Dania, FL 33004