

## CHASING DAYLIGHT — WESTPORT



**Судостроитель:** WESTPORT

**Год постройки:** 2005

**Модель:** Моторная яхта

**Цена:** **ЦЕНА ЯХТЫ ПО ЗАПРОСУ**

**Местонахождение:** United States

**Длина общая:** 130' 0" (39.62m)

**Ширина:** 26' 0" (7.92m)

**Мин. осадка:** 6' 6" (1.98m)

**Крейс. скорость:** 23 Kts. (26 MPH)

**Макс. скорость:** 26 Kts. (30 MPH)

Купить **CHASING DAYLIGHT — WESTPORT** а также выбрать подходящую вам яхту из нашего каталога яхт вам поможет опытный яхтенный брокер Андрей Шестаков. На сегодняшний день компания **Shestakov Yacht Sales Inc.** имеет большое количество яхт в собственном списке продаж, а также тесно сотрудничает со всеми крупными яхтенными производителями по всему миру.

Для того чтобы купить яхту **CHASING DAYLIGHT — WESTPORT** а также проконсультироваться по любому вопросу связанному с покупкой, продажей, чартером яхт позвоните по телефону **+7(918)465-66-44**.

# ОГЛАВЛЕНИЕ

ОГЛАВЛЕНИЕ	2
ХАРАКТЕРИСТИКИ	5
Обзор	5
Основная информация	5
Размеры	5
Скорость, вместимость и масса	6
Размещение	6
Корпус и палуба	6
Информация о двигателе	6
ПОДРОБНОЕ ОПИСАНИЕ	7
Accommodations	7
Main Salon and Dining Area	7
Day Head	7
Galley Equipment	8
Pilothouse Equipment	8
Master Stateroom, On-Deck	8
(2) VIP King Staterooms, Port & Stbd	9
Twin Guest Staterooms, Port & Stbd	10
Crew Quarters	10
Skylounge	11
Electronics, Navigation & Communication Equipment	11
Flybridge Equipment	12
Deck Equipment	12
Aft Deck Equipment	13
Recent Updates & Modifications	13
Construction & Exterior	14
Safety Equipment	15
Engineer's Cabin & Control Room	15

Electrical System	16
Engine Room & Mechanical Equipment	16
Comments	17
Exclusions	17
Исключения	17
Отказ от ответственности	17
<b>ФОТОГРАФИИ</b>	<b>19</b>
Main Salon and Dining	19
Dining Area	19
Dining Area	20
Day Head	20
Galley	20
On-Deck Master Stateroom	21
Master His and Her Bath	21
Master His and Her Bath	21
VIP King Guest Stateroom	21
VIP Guest Bath	22
VIP King Guest Stateroom	22
VIP Guest Bath	22
Twin Guest Stateroom	22
Twin Guest Bath	22
Twin Guest Stateroom	23
Guest Bath	23
Pilothouse	23
Pilothouse Settee	23
Skyounge and Office Area	24
Skyounge	24
Skyounge Day Head	24
Upper Aft Deck	24

---

Upper Aft Deck and Tenders	25
Forward Bow	25
Aft Deck	25
Aft Deck	25
Aft Deck Dining	26
Stern	26
Flybridge	26
Flybridge	27
КОНТАКТЫ	28
Контактная информация	28
Телефоны	28
Время работы	28
Адрес	28

# ХАРАКТЕРИСТИКИ

## Обзор

This Westport 130 Tri-Deck Motoryacht 'Chasing Daylight' was built in 2005 by Westport Yachts and last refitted in 2019. Her luxurious interior is designed by Pacific Custom Interiors and her exterior styling is by Gregory Marshall. Chasing Daylight's interior layout accommodates up to ten guests in five staterooms, including a on-deck master stateroom, (2) Kings and (2) twin staterooms. She also capable of carrying up to 7 crew onboard to ensure a relaxed luxury yacht experience. Timeless styling, beautiful furnishings and sumptuous seating feature throughout to create an elegant and comfortable atmosphere. Built with GRP hull and GRP superstructure. She features an ultra-modern stabilization system to reduce roll motion effect and ensure the ultimate comfort throughout your charter vacation. With a cruising speed of 20 knots, a maximum speed of 26 knots and a range of 800nm from her 9900 gallon fuel tanks, she is the perfect combination of performance and luxury.

## Основная информация

<b>Тип судна:</b> Моторная яхта	<b>Подкатегория:</b> Tri-Deck
<b>Модельный год:</b> 2005	<b>Год постройки:</b> 2005
<b>Год обновления:</b> 2019	<b>Страна:</b> United States
<b>Верх:</b> Hardtop	<b>Открытая палуба мостика:</b> Да

## Размеры

<b>Длина общая:</b> 130' 0" (39.62m)	<b>Длина палубы:</b> 130' 0" (39.62m)
<b>Ширина:</b> 26' 0" (7.92m)	<b>Мин. осадка:</b> 6' 6" (1.98m)
<b>Длина привального бруса:</b> 130' 0" (39.62m)	

## Скорость, вместимость и масса

---

**Крейс. скорость:** 23 Kts. (26 MPH)

**Макс. скорость:** 26 Kts. (30 MPH)

**Вместимость воды:** 1620 Gallons

**Вместимость сточного бака:** 1360 Gallons

**Объем топливного бака:** 9900 Gallons

## Размещение

---

**Всего кают:** 5

## Корпус и палуба

---

**Материал корпуса:** Fiberglass

## Информация о двигателе

---

**Двигатели:** 2

**Производитель:** DDC/MTU

**Модель:** 12V-4000

**Тип топлива:** Diesel

---

# ПОДРОБНОЕ ОПИСАНИЕ

---

## Accommodations

---

CHASING DAYLIGHT is an exceptional (5) stateroom Tri-Deck Motoryacht with owner's suite on main deck forward, two VIP Queen staterooms and two twin's on lower deck, each with private bath. There are separate Crew Quarters including an engineer cabin aft. She features a home theater with a 63" TV and an office area in the skylounge. Built by Westport in 2005 as part of their 130 series, she was designed by Bill Garden and Greg Marshall. Her Pacific Custom Interiors features cherry wood joinery throughout with burle accents throughout. Powered by twin MTU 12V-4000 DDC engines, allowing top speeds of 26-plus knots. Many extensive upgrades include installation of a custom hardtop, new aluminum mast supporting the new Sea Tel VSat 4006, underwater lights, all electric blinds, interior refit, modified galley, entertainment system with large HDTV's, Kaleidscape movies and music with AMX controllers, large hot tub on bow, Asea automatic seamless power transfer system plus much more.

## Main Salon and Dining Area

---

- Custom upholstered sofa
- Cocktail table
- (2) Upholstered club chairs
- (2) Upholstered occasional chairs w/ottoman
- (3) End tables & decorative table lamps
- Samsung 50" HDTV folds down from overhead
- Audio Design surround sound system w/ SpeakerCraft speakers
- Kaleidscape system w/ On-Demand movies & music
- AMX Touch screen control system
- Hunter Douglas electric pleated shades
- Bar w/beverage refrigerator & icemaker
- Built-in buffets, port & stbd, w/ storage below
- Cherry dining table w/ (10) dining chairs
- U-Line wine cooler in custom cherry cabinet
- Stereo volume controls & speakers
- Service Bar to stbd aft w/refrigerator & icemaker
- Custom wallcoverings
- Custom new carpeting throughout (10/19)
- Glass sliding doors to aft deck

## Day Head

---

- Marble vanity top w/bullnose edge

- Marble flooring
- Mirrored overhead
- Black Kohler Caxton sink w/ polished gold finish & onyx accent
- Headhunter Royal Flush Hydro Vac Toilet

## Galley Equipment

---

- Galley modified w/ custom stew pantry area & new appliances ('19)
- Cherry cabinetry throughout
- New White Ice granite countertops ('19)
- Sub-Zero refrigerator drawers
- Sub-Zero freezer drawers
- Sub-Zero side-by-side stainless refrigerator/freezer
- Wolf induction 5-burner cooktop
- Miele dual ovens
- Miele griddle
- Miele dishwasher
- Falmac hood extraction fan
- Sharp carousel microwave/convection oven
- Insta hot water dispenser
- Insinkerator garbage disposal
- Broan trash compactor
- Samsung 15" LCD TV
- New Amtico 'wood' flooring

## Pilothouse Equipment

---

- (2) Crown Classic helm chairs
- Wooden Destroyer 24" ship's wheel
- Engine controls w/ synchronizer
- DDC/MTU engine instrumentation
- Leather upholstered helm station
- Chart drawers
- Raised leather settee
- Mardrona Burl veneer table
- Desk w/ bookcase & chair
- iPod input controlled by Skylounge AMX & Denon DVD

## Master Stateroom, On-Deck

---

- Custom king berth w/upholstered headboard



- Bronze mirror on bulkhead
- Full length mirror on wardrobe door (inside door)
- Walk-in cedar-lined closet
- Hunter Douglas Silhouettes blinds w/fixed valances
- Soffit w/ cherry trim for lighting
- (2) Built-in nightstands
- Built-in dressers
- Built-in desk w/ chair & bookcase above
- (2) Occasional chairs, to stbd
- Fujitsu 63" TV w/ Speaker Craft speakers
- AMX Touch screen control system
- Digital wall safe in closetHis & Her Bath:
- (2) Headhunter Royal Flush Hydro Vac toilets
- Jacuzzi whirlpool tub
- Marble shower w/ glass enclosure, Grohe fixtures & Jado Oriental handles
- (2) Kohler Vintage sinks w/ Jado Oriental fixtures
- Fixed mirror above sinks
- (2) Sconce lights
- Vanity to port w/ bench & lighted mirror
- Marble vanity tops, port & stbd
- Linen storage, port & stbd
- Mirrored medicine cabinets, port & stbd
- Marble flooring

## (2) VIP King Staterooms, Port & Stbd

---

- King berths w/upholstered headboard & drawer storage under below
- (2) Built-in nightstands w/ decorative lamps
- Shoji screen blinds
- Portlights w/ screen
- Entertainment center w/cherry doors, Samsung 26" TV, Kaleidscape w/ Speaker Craft speakers
- Mini AMX Touch Screen Control
- Upholstered ottomanVIP Guest Baths:
- Headhunter Royal Flush Hydro Vac toilets
- Frameless shower w/ tempered glass doors & Grohe fixtures
- Marble top vanity w/ Kohler Vintage sinks w/ Jado Oriental fixtures w/ silver nickel/gold finish
- Marble top vanity
- Wall mirror above vanity
- Linen locker

- Portlights w/ blinds
- Custom wallcovering
- Marble tile flooring

---

## Twin Guest Staterooms, Port & Stbd

---

- Custom twin berth w/ upholstered headboard
- Cherry w/ custom inlaid Madrona Burl
- Custom recess for lighting
- Framed mirrors on bulkhead above headboards
- Clear full-length mirror on wardrobe door, inside door
- Shoji screens
- (3) Built-in nightstands
- Built-in entertainment center w/ Samsung 26" LCD TV, Kaleidscape w/ SpeakerCraft speakers
- New Mini AMX Touch Screen Control

### Guest Baths:

- Headhunter Royal Flush Hydro Vac toilets
- Shower w/ frameless tempered glass doors & Grohe fixtures
- Kohler Vintage sinks w/ Jado Oriental fixtures
- Marble countertops with simple bullnose edge
- Mirrored medicine cabinets

---

## Crew Quarters

---

- Captains cabin w/ custom full size berth with pillow top mattresses and storage below captain's berth
- 110V AC recessed room lights, 24V DC reading lights
- Wardrobe lined with aromatic cedar, automatic light, stainless closet rod & cedar shelf with keeper
- Clear dressing mirror inside wardrobe door
- Dresser
- Desk with stool
- Bookcase
- Safe
- 32" Sony LCD- KDL- 32W600D
- Kaleidscape
- New Mini AMX Touch Screen Control
- Crew Quarters w/ twin berths w/ innerspring pillow top mattresses & dresser drawers
- 110V AC recessed room lights, 24V DC reading lights
- Wardrobe lined with aromatic cedar, automatic light, stainless closet rod & cedar shelf with

keeper

- Clear dressing mirror inside wardrobe door
- Speed Queen Professional Washer and Dryer
- Crew head w/Headhunter Royal Flush Hydro Vac
- Fiberglass shower with Grohe fixtures, sealed shower light
- Kohler Bolero with Grohe Europlus II fixtures
- Wall mirror & medicine cabinet w/ mirror above vanity
- 110V AC recessed room lights and vanity lighting
- Crew lounge w/ upholstered Settee
- Built-in Sub-zero refrigerator/freezer
- Stainless steel microwave
- Stainless steel sink
- Cherry cabinets w/solid surface tops
- Stacked washer & dryer
- Sony 32" with Denon Stereo
- Kaleidscape w/ Mini AMX Touch Screen Control

## Skylounge

---

- Custom upholstered sectional sofa
- Modifications to create office area w/desk
- Mini Theater w/ Fujitsu 62" TV
- Kaleidescape w/ SpeakerCraft speakers
- AMX Touch Screen Control
- Glass sliding doors to upper aft deck
- 2 ArmchairsDay Head:
  - Headhunter Royal Flush Hydro Vac Toilet
  - Mirrored overhead
  - Marble vanity top w/ simple bullnose edge & matching marble tile flooring
  - Black Kohler Caxton under mount sink, Elegant faucet with polished gold finish and onyx accent color
  - Art Niche, starboard aft corner

## Electronics, Navigation & Communication Equipment

---

- (2) Furuno FAR-2115 Radars w/ 20" LCD monitor
- Simrad AP50 Autopilot
- Simrad RGC85 Gyro Compass w/interface box
- GPIRB NA-S1520
- SART NA-SART
- Furuno FCV-1200L video /depth sounder w/ 15" monitor

- (2) Furuno GP33 GPS
- KVH TracPhone F33 Sat Phone w/phone switch
- Sea Tel 4004 Sat TV system w/MS-8
- Sea Tel V-Sat 4006
- Tellular CDMA digital cellular black box
- Transas Navisailor 2400 electronic chart w/ 20" LCD monitor
- Separate electronic chart system w/Nobeltec
- (2) Icom M602 VHF's
- Icom M127 VHF
- Icom M802 SSB
- Hailer horn integrated w/VHF
- B&G Hydra 2000
- Axis Camera System w/recorder
- Furuno Navtex NX-500
- Furuno Felcom Immarsat
- Wireless internet

---

## Flybridge Equipment

---

- Custom hardtop w/ new welded aluminum mast w/ electronics, anchor light, deck lighting & air horn
- Wet Bar w/sink, hot & cold water, icemaker, refrigerator, BBQ-Fire Gas Magic Grill
- Kahlenberg Air Horn
- (2) SpeakerCraft speakers controlled from Skylounge AMX
- Custom Venturi windshield in black aluminum frame
- Sunpad with cushions
- Molded-in bench seating
- Settee with (2) tables

---

## Deck Equipment

---

- Deluxe Marquipt 24" 9-step boarding stair w/brackets at port & stbd gates
- Swim ladder on transom
- Sunbrella snap-on covers for bridge settee, tables, seating, helm seats, shore boats, bow seat & aft deck seating
- New Sunbrella cushions for aft deck settee, bow sun pad, boat deck lounge settee and observation deck settee
- Wheel puller built to pull vessel's propellers
- (6) Underwater lights
- Passerelle rebuilt w/ Besenzoni 2-section rotating hydraulic, w/ handrail and wireless control for Med-style mooring ('19)
- Molded-in settee w/ cushions, cover & locker space under

- Sutherland Teak round 40" table
- Forward Portuguese Settee w/ (2) molded seats w/cushions
- Chocks for tender & (3) Jet Skis
- Tender lifting bridle
- Nautical Structures davit
- (2) Wing stations outside pilothouse, port & starboard w/ electronic engine controls w/ synchronizer, engines starts & stops, jog lever, bow thruster control rudder angle indicator
- Teak decks over composite except tender are which is nonskid over composite
- Both anchor windless serviced (10/19)
- Bow sun lounge w/ cushions, covers & enclosed storage locker underneath
- Volume control & speakers from Salon AMX
- Custom hot tub forward (6 to 8 person)
- Bow sunlounge w/ cushions, covers & storage below
- Volume control & speakers
- Anchor windlass serviced (10/19)

---

## Aft Deck Equipment

---

- Aft Deck Bar w/ sink, Whirlpool refrigerator & icemaker & storage
- Built-in bench seating w/cushions
- Teak bench/table
- Westcoast Teak round dining table w/polished stainless steel pedestal by Crown and (8) teak dining chairs w/cushions
- (3) Teak bar chairs w/ cushions
- (3) Teak lounge chairs & ottomans w/cushions
- (2) Teak side tables
- All furniture by Sutherland Teak
- Overhead recessed lighting
- Spiral teak stairs to upper deck
- Stairwell down to control room
- Stereo speakers & volume controlled by salon AMX
- Dual stairways w/handrails to swim platform, port & stbd
- Teak swim platform
- Watertight access door to engine room

---

## Recent Updates & Modifications

---

Exterior:

- Hauled w/ new bottom paint and Prop speed (7/19)
- Major overhaul davit ('18)
- New cushions, pillows, covers throughout ('18)

- Fore deck and swim platform teak replaced ('17)
- Custom hatch on swim platform for extra storage ('16)
- Custom (10) person round dining table ('15)
- Custom hinge system for access to storage under VIP cabins ('19)
- Main Engine had QL3 overhaul @ 6500 hrs (10/19)
- Complete overhaul and rewrap main engine exhaust (10/19)
- Hydraulic overhaul on Naiad Zero Speed stabilizers w/new pumps & motors
- Generators recently in frame overhauled
- Passarelle complete rebuild (10/19)
- Chillers replaced ('15)
- Rudders dropped & serviced (7/19)
- Shafts pulled & serviced ('18)
- Bow thruster pulled & serviced, resealed ('18)
- Stabilizer fins pulled & serviced ('19)
- Main Engines repainted ('19)
- New Generator insulation & covers painted ('17)
- New Engine room floor boards ('17)
- Baur Dive compressor ('16)
- Navigational:
  - Nobletech Pro 2018 w/ custom Nav PC ('19)
  - Kerio data monitoring system (10/19)
  - Seatel TRVO HD Sat TV ('18)
  - New LED Navigational screens on bridge ('16)
  - Seatel 4009 MKIII VSAT ('16)
  - Seatel TRVO HD Sat TV ('18)
  - Axis HD cameras (10/19)
  - Raytheon Gyro ('16)
  - New Pepwave Cell antenna (10/19)
  - New Vessel Management System ('16)
  - New FLIR Night vision ('18)
  - Interior:
    - New carpeting in salon & master (10/19)
    - Complete galley refit including new stew pantry (10/19)
    - New soft goods throughout ('17)
    - Majelite overhead panels ('16)
    - All appliances in galley replaced ('16)
    - Crew quarters new wallpaper & carpeting ('18)
    - New teak deck in lazarette ('17)

## Construction & Exterior

- Rubrails, 1 ¼" half oval rub strip
- Freeman hatches hinged cast aluminum square bow deck hatch to chain locker with gas spring lift
- Hull Bottom: (2) layers of anti-blister epoxy & (2) coats of Micron 66 black bottom

paint

- Dupont Imron exterior paint
- Windows, Frameless, bonded with Ultra Glaze, ¼” Solar Gray tempered glass
- Stainless Rails located at transom stairs port & starboard, boat deck, stern, Flybridge, forward main deck, house sides, and boat deck lounge; Railings 1 ½” mirror polished stainless; and boat deck rails have mid-rails
- Exterior decks: Teak main deck; Teak boat deck with non-skid tender area; Flybridge non skid deck
- Exterior deck Settees: Molded fiberglass with cushions and covers
- Thru-Hulls: All thru-hull fittings below waterline are bronze with bronze valves and bonding; main engine is fiberglass and bronze butterfly
- Bulwarks: Fiberglass with polyurethane finish
- Caprail: Fiberglass with polyurethane finish
- Insulation: Hull is cored with PVC foam, which serves as insulation; House is also cored with various materials to provide insulation; Overhead surfaces have 3M Thinsulate insulation installed for both thermal and acoustic properties; Engine Room has fiberglass and lead foam materials with perforated, white powder-coated aluminum liner on ceiling, forward and aft bulkhead
- Port Lights: Freeman oval, opening with screens

## Safety Equipment

---

- (18) Coast Guard approved adult life preservers with water lights, and (6) Coast Guard approved child life preservers with water lights
- (2) 24” diameter ring buoys secured on exterior of vessel
- Flare kit
- (2) 20 MPH SeaSafe
- Ship’s bell per Coast Guard regulations, installed on bow railing over anchor windlass
- Fire extinguishers, (3) 10lb, (7) 5lb, & (9) 2.5lb dry powder
- GPIRB, Northern Airborne Technology NA-S1520
- SART NA-SART
- Medical kit ('19)

## Engineer's Cabin & Control Room

---

- Engineer’s cabin w/ custom-size berth, dresser, head w/ vanity, head & shower located aft of engine room
- Air conditioned
- Traulsen refrigerator/freezer
- Panasonic TV/DVD combo
- Sony AM/FM/CD/iPod Player
- SpeakerCraft speakers

- Workbench w/ 4" vise
- Storage cabinets
- Tool box

---

## Electrical System

---

- (2) Northern Lights 65KW Generators w/ hydro-elastic mounts & secondary Barry control mounts, sound shields, water lift mufflers, exhaust water separator, and water temperature, oil pressure and hour meters installed in distribution panel, upgrade to electronic governors (both generators have remote start/stop in Pilothouse)
- PTO takeoff on both gens
- Atlas shore power management
- Asea shore power convertors
- Atlas alarm panel
- AGM batteries
- Battery chargers
- (2) 100 amp 3-Phase shore cords
- Isolation transformers

---

## Engine Room & Mechanical Equipment

---

- Two MTU/DDC 12V-4000 main engines, 2735 HP
- (3) Station controls, integrated station selection
- MTU QL3 Half-life rebuild service on both engines (10/19)
- MTU trend monitoring system for main engines
- 220V 3HP Air compressor w/inline water separator
- Naiad Zero speed "at-rest" stabilization w/ extra large fins
- 16" Wesmar bow thruster, 50 HP dual prop hydraulic w/ 3-station controls, PTO from both generators
- DeAngleo Marine Exhaust risers replaced ('19)
- Aqua Air 4-ton A/C system w/ (4) chillers
- Racor fuel filters 540GPH for each main engine
- SeaPro fuel filter 2005-MK for each generator
- Fuel transfer pump w/ flow meter and timer
- Fire Suppression FM200 engine room fire suppression system w/ manual/automatic controls
- Lube Oil Change System: 78-gallon lube oil tank w/ deck fill
- Rudders, 10 square foot cast urethane foil-shape rudders with 4" Aquamet 22 HS stocks
- Tides Dripless rudder seals packing boxes
- Michigan 5-bladed Propellers with custom wheels new
- Aquamet shafts 22-HS 4 1/2"
- Jastrom digital steering commercial grade power steering



- Bilge Pumps: 13 remote-mounted, 24V electric bilge pumps with manual/automatic switches and VIC alarms on all pumps, except lower engine room pump
- Emergency Bilge Pump fixed bilge pumps system includes (2) electric pumps and priming system
- (2) Sea Recovery SRC 1800 3600 GPD, upgraded high pressure pumps
- (2) Aqua Pure water filters
- (2) 220V Fresh water AC Pumps & 24V DC backup pressure pump w/ pressure tank
- Hot water heater, 120 gallon tank w/ circulating pump
- Hot & Cold Water Shower in Swim Platform area
- Freshwater wash down with quick disconnects
- (3) Grey water transfer boxes fitted w/ screen, supply & discharge lines for all showers and sinks
- Headhunter MSD black water treatment system upgraded pumps
- Delta T Demisters

## Comments

---

Chasing Daylight is a turn-key 130' Westport has been meticulously maintained with no expense spared. She has just completed a QL3 on the main engines extensive refit including a full galley refit with the original settee layout converted to a Stewardess Pantry with a sink, refrigerators, bar and storage along with new granite and appliances. Chasing Daylight can accommodate ten guests in (5) cabins, which includes a spacious on-deck master. Additionally, her (4) crew cabins allow for up to (7) crew members. She is also equipped with Zero Speed Naiad stabilization and continuously updated electronics and systems in the pilothouse.

## Exclusions

---

- All Owner's personal items
- Williams Jet Tender
- (3) Yamaha Waverunners
- Fishing and Diving Equipment
- Name 'Chasing Daylight' Reserved
- 

## Исключения

---

При продаже яхты исключаются личные вещи владельца.

## Отказ от ответственности

---

Компания предоставляет описание судна или яхты добросовестно, но не может гарантировать точность этой информации, а также не ручается за техническое состояние. Покупатель должен проинструктировать своих агентов или оценщиков исследовать представленную информацию более подробно, по собственному желанию. Продажа судна или яхты, изменение цены или снятие с продажи будет происходить без предварительного уведомления.

# ФОТОГРАФИИ



**Main Salon and Dining**



**Dining Area**



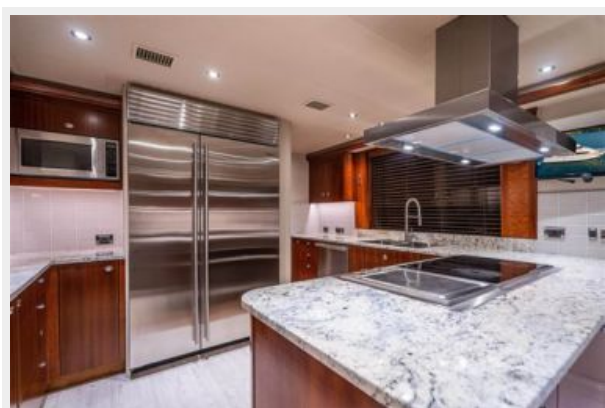
### Dining Area



### Day Head



### Galley



### On-Deck Master Stateroom



### Master His and Her Bath



### Master His and Her Bath

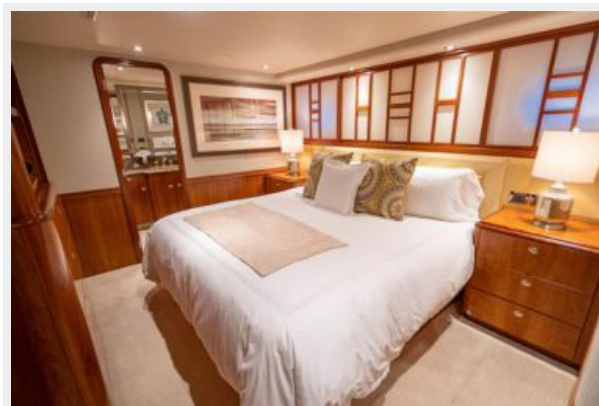
### VIP King Guest Stateroom



**VIP Guest Bath**



**VIP King Guest Stateroom**



**VIP Guest Bath**



**Twin Guest Stateroom**



**Twin Guest Bath**



### Twin Guest Stateroom



### Guest Bath



### Pilothouse



### Pilothouse Settee



### Skylounge and Office Area



### Skylounge



### Skylounge Day Head



### Upper Aft Deck





### Upper Aft Deck and Tenders



### Forward Bow



### Aft Deck



### Aft Deck



### Aft Deck Dining



### Stern



### Flybridge



## Flybridge



# КОНТАКТЫ

---

Андрей Шестаков (Andrey Shestakov) – ведущий яхтенный брокер отдела продаж яхт и судов компании Shestakov Yacht Sales Inc. Официальный представитель Shestakov Yacht Sales Inc. для русскоговорящих клиентов в центральном офисе компании в Майами/Форт Лодердейл/Флорида/США.

## Контактная информация

---

Email: [andrey@shestakovyachtsales.com](mailto:andrey@shestakovyachtsales.com)

Web: [shestakovyachtsales.com](http://shestakovyachtsales.com)

## Телефоны

---

Краснодарский край: **+7(918)465-66-44**

США, Майами, Флорида: **+1(954)274-4435**

## Время работы

---

Понедельник – Суббота: **9:00 - 21:00**  
EDT

Воскресенье: **Закрито**

## Адрес

---



Harbour Towne Marina, 850 NE 3rd St,  
STE 213, Dania, FL 33004